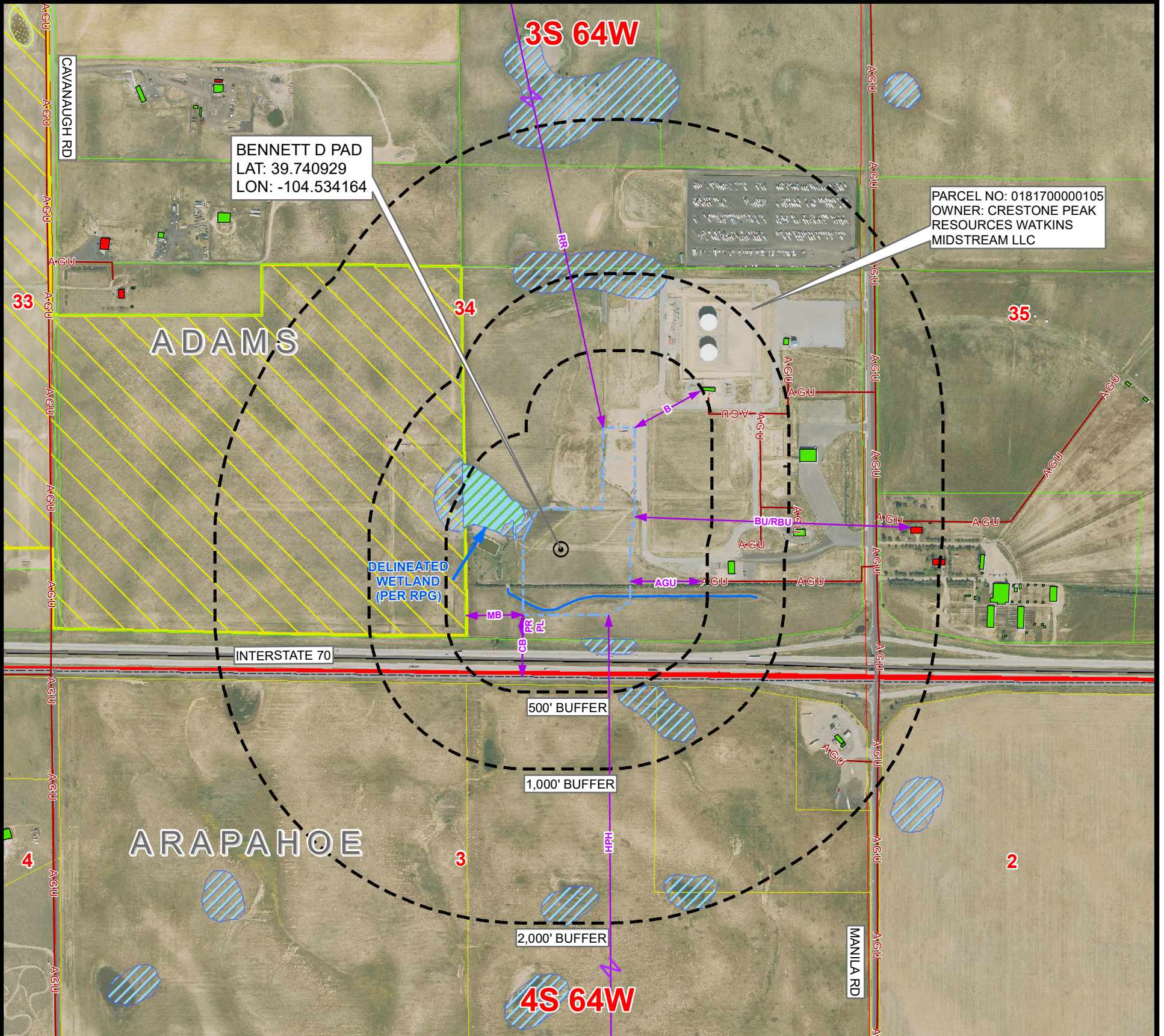


CULTURAL FEATURES MAP BENNETT D PAD

SECTION 34, TOWNSHIP 3 SOUTH, RANGE 64 WEST, 6TH P.M., ADAMS COUNTY, COLORADO



# OF CULTURAL FEATURES WITHIN	0-500 FEET	501-1,000 FEET	1,001-2,000 FEET
BUILDING UNIT (RESIDENTIAL & NON-RESIDENTIAL)	0	0	2
RESIDENTIAL BUILDING UNIT	0	0	2
HIGH OCCUPANCY BUILDING UNIT	0	0	0
SCHOOL PROPERTY	0	0	0
SCHOOL FACILITY	0	0	0
DESIGNATED OUTSIDE ACTIVITY AREA	0	0	0

	MEASURED FROM THE NEAREST	EDGE OF WORKING PAD
B	BUILDING	±486' NE
BU	BUILDING UNIT	±1791' E
RBU	RESIDENTIAL BUILDING UNIT	±1791' E
HOBU	HIGH OCCUPANCY BUILDING UNIT	5280'+
DOAA	DESIGNATED OUTSIDE ACTIVITY AREA	5280'+
PR	PUBLIC ROAD	±229' S
AGU	ABOVE GROUND UTILITY	±461' E
RR	RAILROAD	±4578' N
PL	PROPERTY LINE	±150' S
S	SCHOOL FACILITY	5280'+
CC	CHILD CARE CENTER	5280'+
DIC	DISPROPORTIONATELY IMPACTED COMMUNITY BOUNDARY	5280'+
MB	MUNICIPALITY BOUNDARY	±371' W
CB	COUNTY BOUNDARY	±403' S
SW	SURFACE WATER	±0'
PWS	PUBLIC WATER SYSTEM SUPPLY WELL	2640'+
HPH	HIGH PRIORITY HABITAT	±3565' S
RHSD	RBU, HOBU, OR SCHOOL FACILITY WITHIN A DI COMMUNITY	5280'+

NOTE: THIS MAP IS A COMPILATION OF PUBLICLY AVAILABLE DATA. THE ACCURACY AND COMPLETENESS OF SAID DATA HAS NOT BEEN VERIFIED BY 609 CONSULTING, LLC. EXISTING CONDITIONS MAY DIFFER FROM WHAT IS SHOWN.

Legend

	PROPOSED REFERENCE POINT		PUBLIC ROAD		RIPARIAN CORRIDOR
	PROPOSED WORKING PAD SURFACE		RAILROAD		DELINEATED WETLANDS
	BUFFER		DITCH/CANAL/DRAINAGE		RIVERINE CORRIDOR
	BUILDING		DISPROPORTIONATELY IMPACTED COMMUNITY		FRESHWATER EMERGENT WETLAND
	NON-RESIDENTIAL BUILDING UNIT		ADAMS COUNTY PARCEL BOUNDARY		FRESHWATER FORESTED/SHRUB WETLAND
	RESIDENTIAL BUILDING UNIT		ARAPAHOE COUNTY PARCEL BOUNDARY		OTHER WETLAND
	HEALTH FACILITY		AURORA JURISDICTIONAL BOUNDARY		LAKE
	SCHOOL FACILITY		RULE 411.b 2640' BUFFER		FRESHWATER POND
	CHILD CARE FACILITY		100-YEAR FLOODWAY (EFFECTIVE)		
	ABOVE GROUND UTILITY		100-YEAR FLOODPLAIN (EFFECTIVE)		
			COUNTY BOUNDARY		

Prepared For:

CRESTONE PEAK RESOURCES, LLC
555 17TH STREET, SUITE 3700
DENVER, CO 80202

LOVELAND OFFICE
6706 North Franklin Avenue
Loveland, Colorado 80538
Phone 970-776-4331

SHERIDAN OFFICE
1095 Saberton Avenue
Sheridan, Wyoming 82801
Phone 307-674-0609

Drawn by: CPS Date: 17 Oct 2024
Revised: Date:

NAD83 CO-Nft
Scale: 1" = 750ft