

Legend

 Site Location

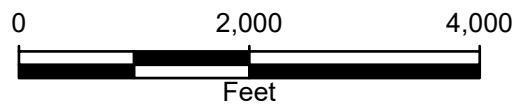
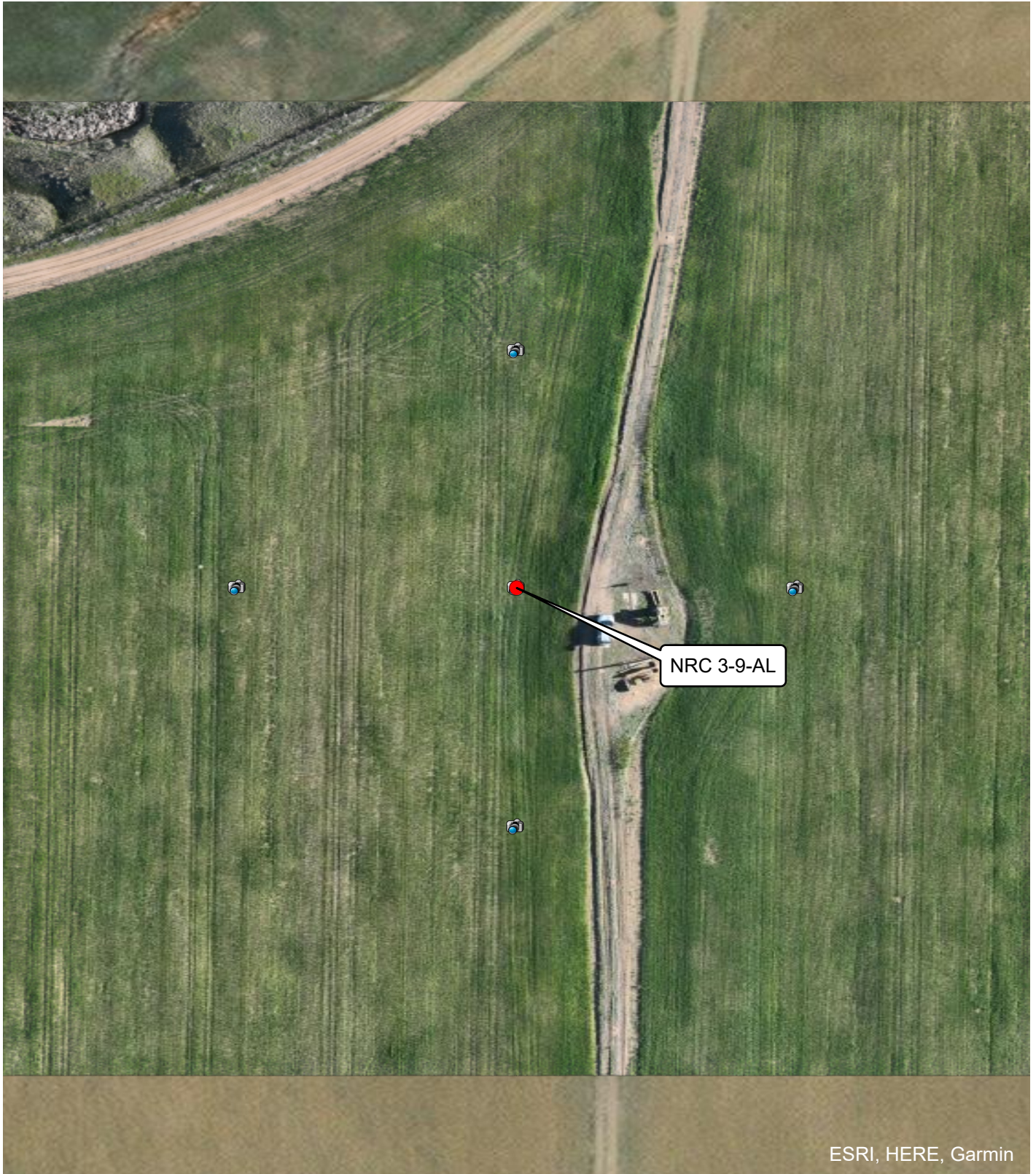




FIGURE 1
SITE LOCATION MAP
NRC 3-9-AL
NENW SEC 9-T1N-R67W
WELD, COLORADO





Legend

-  Plugged and Abandoned Well
-  Cardinal Direction Photo Locations
- Cardinal Direction Photos Taken 150' from Well

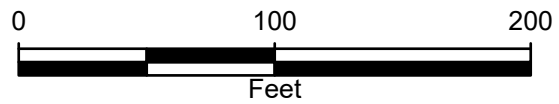


FIGURE 2
SITE MAP
NRC 3-9-AL
NENW SEC 9-T1N-R67W
WELD, COLORADO



FIGURE 3: PHOTOGRAPHIC LOG



Photograph 1: View facing north as required in Energy and Carbon Management Commission (ECMC) Rule 1004.
Photo Taken from GPS 40.070530, -104.898203



Photograph 2: View facing east as required in Energy and Carbon Management Commission (ECMC) Rule 1004.
Photo Taken from GPS 40.070881, -104.898611

FIGURE 3: PHOTOGRAPHIC LOG



Photograph 3: View facing south as required in Energy and Carbon Management Commission (ECMC) Rule 1004.
Photo Taken from GPS 40.071228, -104.898201



Photograph 4: View facing west as required in Energy and Carbon Management Commission (ECMC) Rule 1004.
Photo Taken from GPS 40.070880, -104.897792



Attachments: Historic Imagery



Imagery Date: February 2, 2008



Imagery Date: May 4, 2011

Site Name: Badding 15-35
Imagery Source: Google Earth



Attachments: Historic Imagery



Imagery Date: March 2, 2025

Site Name: Badding 15-35
Imagery Source: Google Earth

Page 2 of 2

