



Jilson 1 Wellhead  
© 20-May-25 17:19:23

Jilson 1 Wellhead excavation

- Inadequate fencing - Orange construction fencing has been installed around portions of the open excavations; However, fencing has been installed too close to unstable sidewalls and is sagging/falling into the open excavation.
- Proximity to occupied structures - <1,300' NNW, <1,000' NW & SW

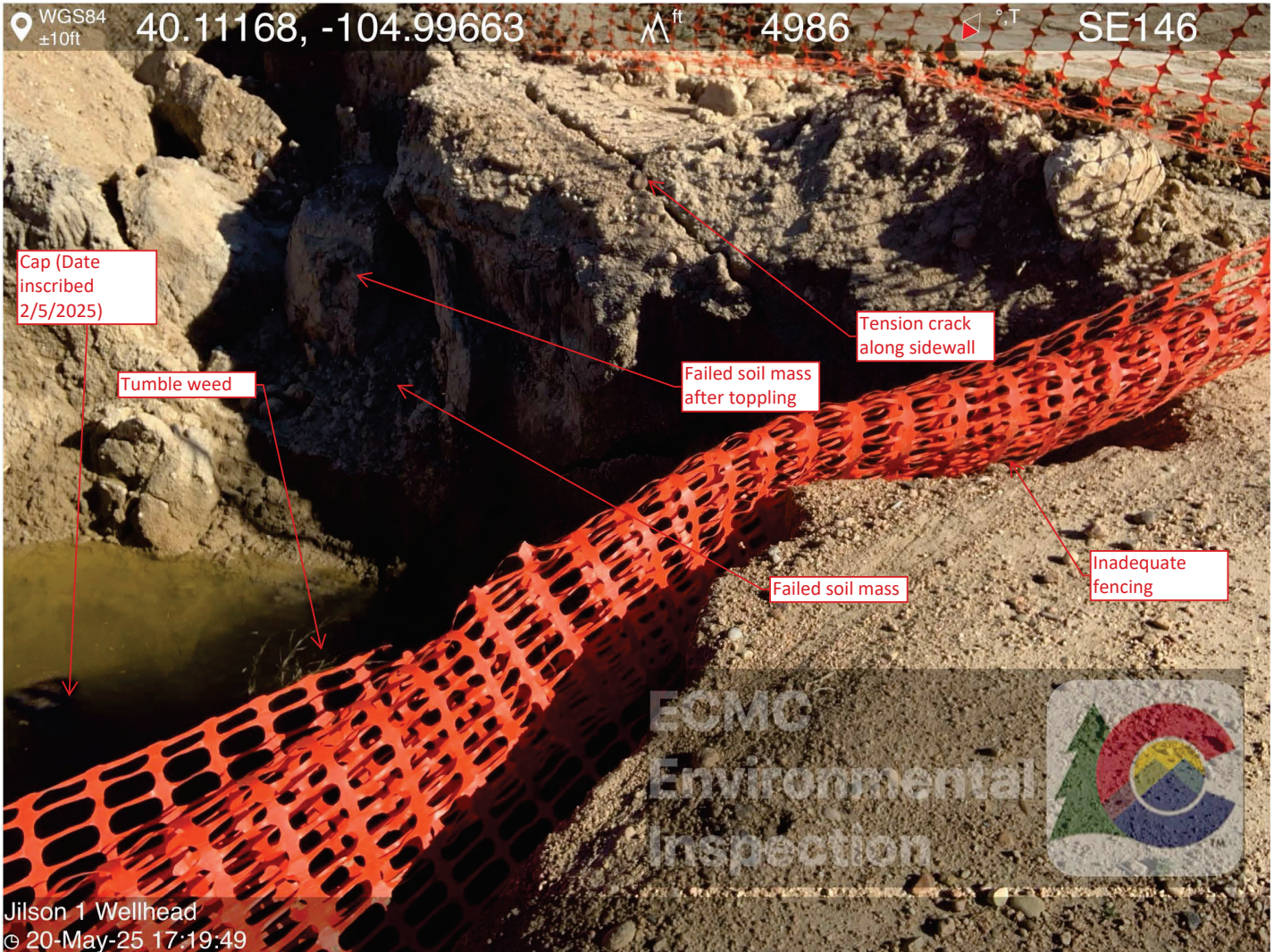




#### Jilson 1 Wellhead excavation - Sidewall collapse

- Excavation sidewalls have not been sloped or benched, are unstable, and have partially collapsed (failed soil mass observed in base of excavation adjacent to sidewall) and are showing signs of additional collapse (tension cracks/fissures, toppling/sloughing/sliding).
- Inadequate fencing - Orange construction fencing has been installed around portions of the open excavations; However, fencing has been installed too close to unstable sidewalls and is sagging/falling into the open excavation.
- Weeds have started to grow along portions of the excavation fencing.
- Proximity to occupied structures (Multiple Residences <1,100' S)





Jilson 1 Wellhead  
© 20-May-25 17:19:49

Jilson 1 Wellhead excavation - Sidewall collapse. Shallow groundwater (~5' bgs)

- Excavation sidewalls have not been sloped or benched, are unstable, and have partially collapsed (failed soil mass observed in base of excavation adjacent to sidewall) and are showing signs of additional collapse (tension cracks/fissures, toppling/sloughing/sliding).
- Inadequate fencing - Orange construction fencing has been installed around portions of the open excavations; However, fencing has been installed too close to unstable sidewalls and is sagging/falling into the open excavation.
- Weeds observed within the base of the open excavation (tumbleweed).



WGS84  
±10ft

40.11168, -104.99664

ft

4979

°T

E101



Jilson 1 Wellhead  
© 20-May-25 17:19:51

Jilson 1 Wellhead excavation - Shallow groundwater (~5' BGS). Date on cap: 2/5/2025

-Excavation sidewalls have not been sloped or benched

-Inadequate fencing - Orange construction fencing has been installed around portions of the open excavations; However, fencing has been installed too close to unstable sidewalls and is sagging/falling into the open excavation.

-Weeds observed within the open excavation







WGS84  
±34ft

40.11179, -104.99635

ft

4983

W261



Jilson 1 Wellhead

© 20-May-25 17:17:54

Flowline Excavation - Flowline exposed in open excavation





Jilson 1 Wellhead  
© 20-May-25 17:18:42

Jilson 1 Wellhead & Flowline excavation -

- Excavation sidewalls have not been sloped or benched, are unstable, and have partially collapsed (failed soil mass observed in base of excavation adjacent to sidewall) and are showing signs of additional collapse (tension cracks/fissures, toppling/sloughing/sliding).
- Inadequate fencing - Orange construction fencing has been installed around portions of the open excavations; However, fencing has been installed too close to unstable sidewalls and is sagging/falling into the open excavation and is discontinuous.
- Weeds have started to grow along portions of the excavation fencing.





Jilson 1 Wellhead

© 20-May-25 17:20:53

- Unused equipment (disconnected portion of flowline) stored on location.
- Proximity to occupied structures (~1,200' NE, ~1,000' ENE)



WGS84  
±27ft

40.11198, -104.99625

ft

4980

°T

N6



Jilson 1 Wellhead  
© 20-May-25 17:22:20

Excavation/construction activities north of Jillson 1 Wellhead



WGS84  
±40ft

40.11199, -104.99624

ft

4980

°T

NE41



Jilson 1 Wellhead  
© 20-May-25 17:22:17

Excavation north of Jillson 1 Wellhead looking NE - Shallow groundwater infiltrating base of excavation  
-Proximity to occupied structures (~1,200' NE)