



CDH Consulting, LLC
Thornton, Colorado
720.431.7468
www.CDHConsult.com

Facility Closure Investigation and Environmental Summary

SATER CC 18-14

ECMC Remediation Project #31584

Weld County, Colorado

Attachments:

Field Form

Figure 1 – Site Location Map

Figure 2 – Soil Sample and Field Screening Locations Map

Figure 3 – Supplemental Source Mass Removal Map

Table 1 – Field Data Summary Table

Table 2 – Summary of Volatile Organic Soil Chemistry Data

Table 3 – Summary of Polycyclic Aromatic Hydrocarbon Soil Chemistry Data

Table 4 – Summary of Soil Suitability for Reclamation

Table 5 – Summary of Metals in Soil Chemistry Data

Photographic Log



CDH Consulting, LLC
Thornton, Colorado
720.431.7468
www.CDHConsult.com

FIELD FORM

SITE NAME / REM: SATER CC 18-14 REM #31584								DATE: 4/16/25	WEATHER: 50s and cloudy	
TYPE OF WORK: Tank battery decommissioning								CLIENT: Noble Energy Inc.		
LAT/LONG: 40.304978, -104.483186								PERSONNEL: JW		
ESTIMATED DEPTH TO GROUNDWATER: No groundwater encountered								OTHER OBSERVATIONS: None		
SOIL SAMPLING								FACILITY INFRASTRUCTURE		
Date	Soil Sample ID	Soil Type	PID (ppm)	Staining (Y/N)	Odor (Y/N)	Time	Sent to lab on Ice? (Y/N)	EQUIPMENT		Quantity
								Above Ground Storage Tank (AST)		3
4/16/2025	AST01@0-6"	SP	2.1	N	N	9:10	Y	Buried or Partially Buried Vessel		2
4/16/2025	AST02@0-6"	SP	0.1	N	N	9:15	Y	Separator		2
4/16/2025	AST03@0-6"	SP	0.3	N	N	10:10	Y	Emission Control Device (ECD)		2
4/16/2025	PWV01@5'	SW	101.6	N	Y	11:30	Y	Dump Line		1
4/16/2025	PWV01-N@3'	SW	0.4	N	N	-	NA	Wellhead		-
4/16/2025	PWV01-E@3'	SW	0.8	N	N	-	NA	Flowline		-
4/16/2025	PWV01-S@3'	SW	9.4	N	N	11:35	Y	Third Party Equipment:		1 Meter House
4/16/2025	PWV01-W@3'	SW	1.2	N	N	-	NA	Other:		-
4/16/2025	PWV02@5'	SW	20.2	N	N	11:20	Y	Soil Loads Removed		
4/16/2025	PWV02-N@3'	SW	19.8	N	N	11:25	Y	IMPACTED SOIL IDENTIFIED? Yes		
4/16/2025	PWV02-E@3'	SW	0.3	N	N	-	NA	ESTIMATED VOLUME OF IMPACTS: 20x20x5' (PWV)		
4/16/2025	PWV02-S@3'	SW	10.6	N	N	-	NA	Date	Number	CY
4/16/2025	PWV02-W@3'	SW	1.2	N	N	-	NA			
4/16/2025	SEP01-DL@5'	SW	68.0	N	N	12:10	Y			
4/16/2025	SEP02-DL@5'	SW	15.2	N	N	12:15	Y			
4/16/2025	ECD01@0-6"	SP	0.5	N	N	-	NA	Total Removed		
4/16/2025	ECD02@0-6"	SP	0.2	N	N	-	NA	Disposal Facility:		
4/16/2025	FL01-R-S@4'	SW	0.2	N	N	12:20	Y	Groundwater Recovery		
4/21/2025	BKG01@0-6"	SP	3.0	N	N	10:30	Y	DATE GW ENCOUNTERED:	DEPTH:	
4/21/2025	BKG01@3'	SW	3.1	N	N	10:32	Y	GROUNDWATER IN CONTACT WITH IMPACTED SOIL?		
4/21/2025	BKG01@5'	SW	3.2	N	N	10:35	Y	LNAPL OR SHEEN OBSERVED ON GW?		
4/21/2025	BKG02@0-6"	SP	1.4	N	N	10:37	Y			
4/21/2025	BKG02@3'	SW	5.2	N	N	10:40	Y			
4/21/2025	BKG02@5'	SW	6.9	N	N	10:45	Y			
4/21/2025	BKG03@0-6"	SP	3.8	N	N	10:50	Y			
4/21/2025	BKG03@3'	SW	4.7	N	N	10:55	Y			
4/21/2025	BKG03@5'	SW	6.8	N	N	11:00	Y			
GROUNDWATER SAMPLING								Date	BBLs	
Date/Time	Groundwater Sample ID	Depth Collected	Turbid?	Sheen?	Odor?	Photo?	Sent to lab on Ice? (Y/N)	Total Removed		
								Disposal Facility:		





CDH Consulting, LLC
Thornton, Colorado
720.431.7468
www.CDHConsult.com

FIGURES

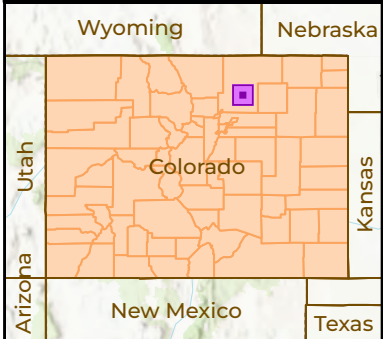
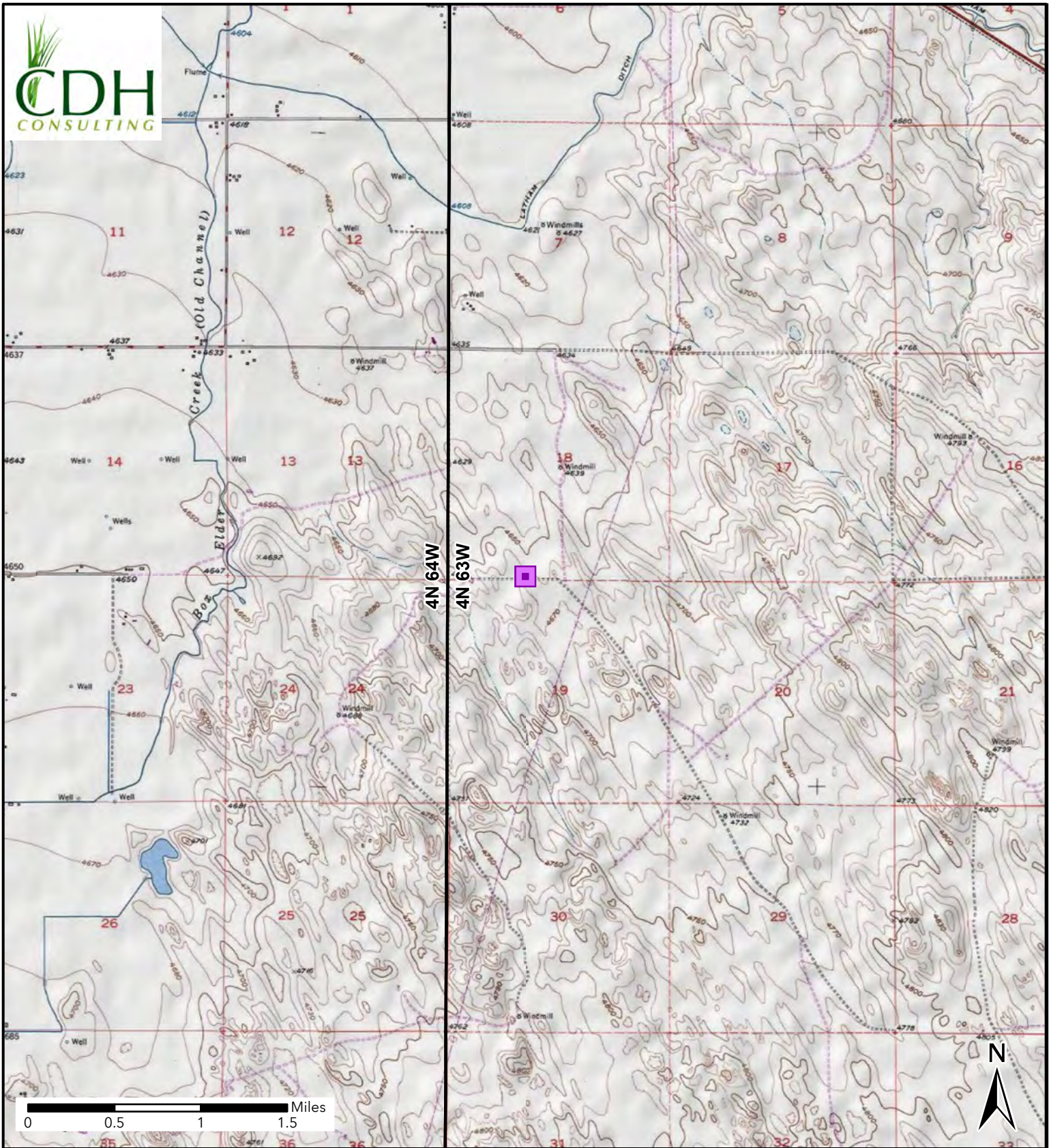
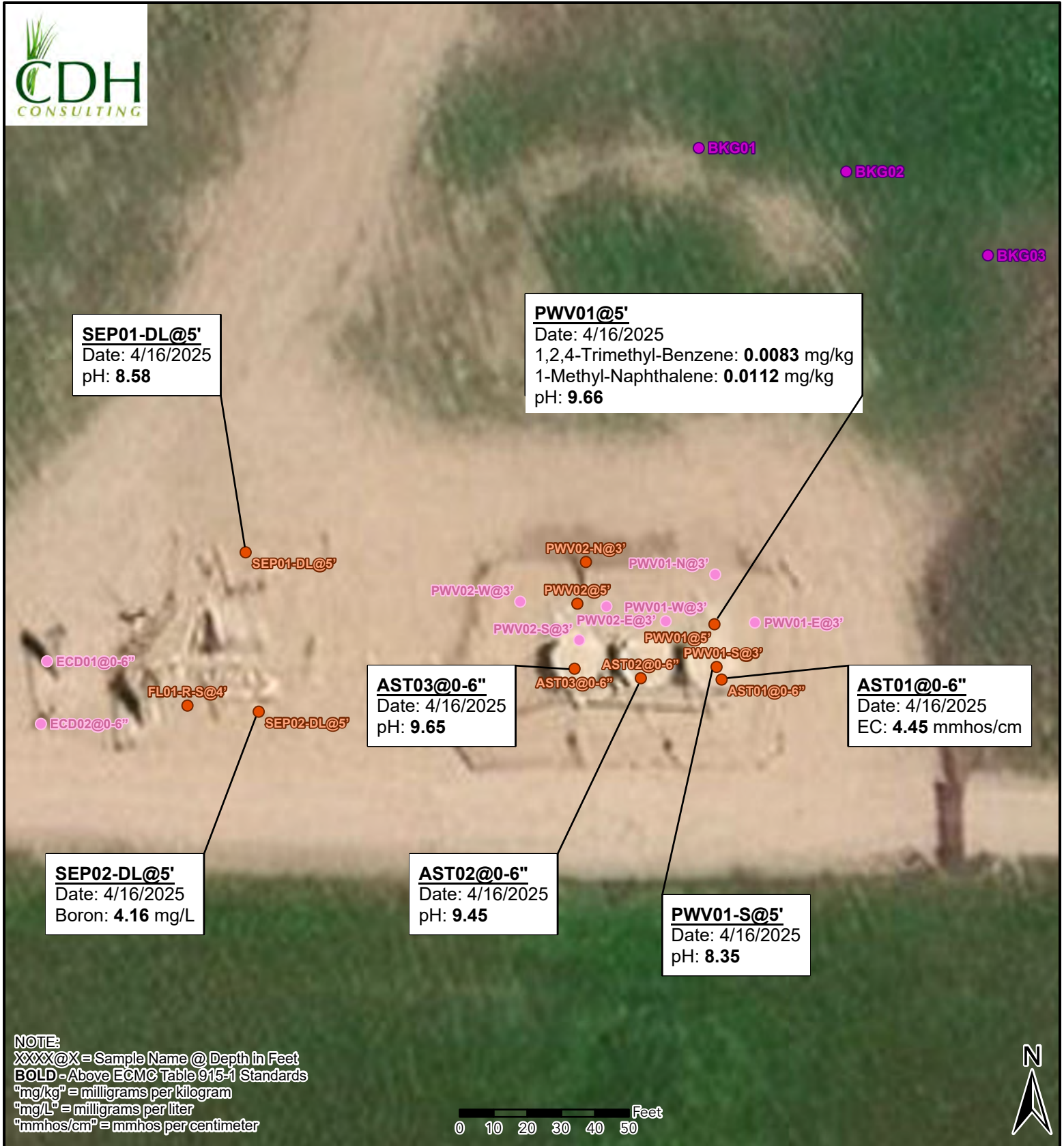


Figure 1
Site Location
SATER CC 18-14
SESW-SEC 18-T4N-R63W
Weld County, Colorado
Noble Energy Inc.

 Site Location



NOTE:
 XXXX@X = Sample Name @ Depth in Feet
BOLD - Above ECMC Table 915-1 Standards
 "mg/kg" = milligrams per kilogram
 "mg/L" = milligrams per liter
 "mmhos/cm" = mmhos per centimeter



Figure 2
Soil Sample Location Map
 SATER CC 18-14
 SESW-SEC 18-T4N-R63W
 Weld County, Colorado
 Noble Energy Inc.

- Site Location
- Soil Sample
- Background Sample
- Screening Point

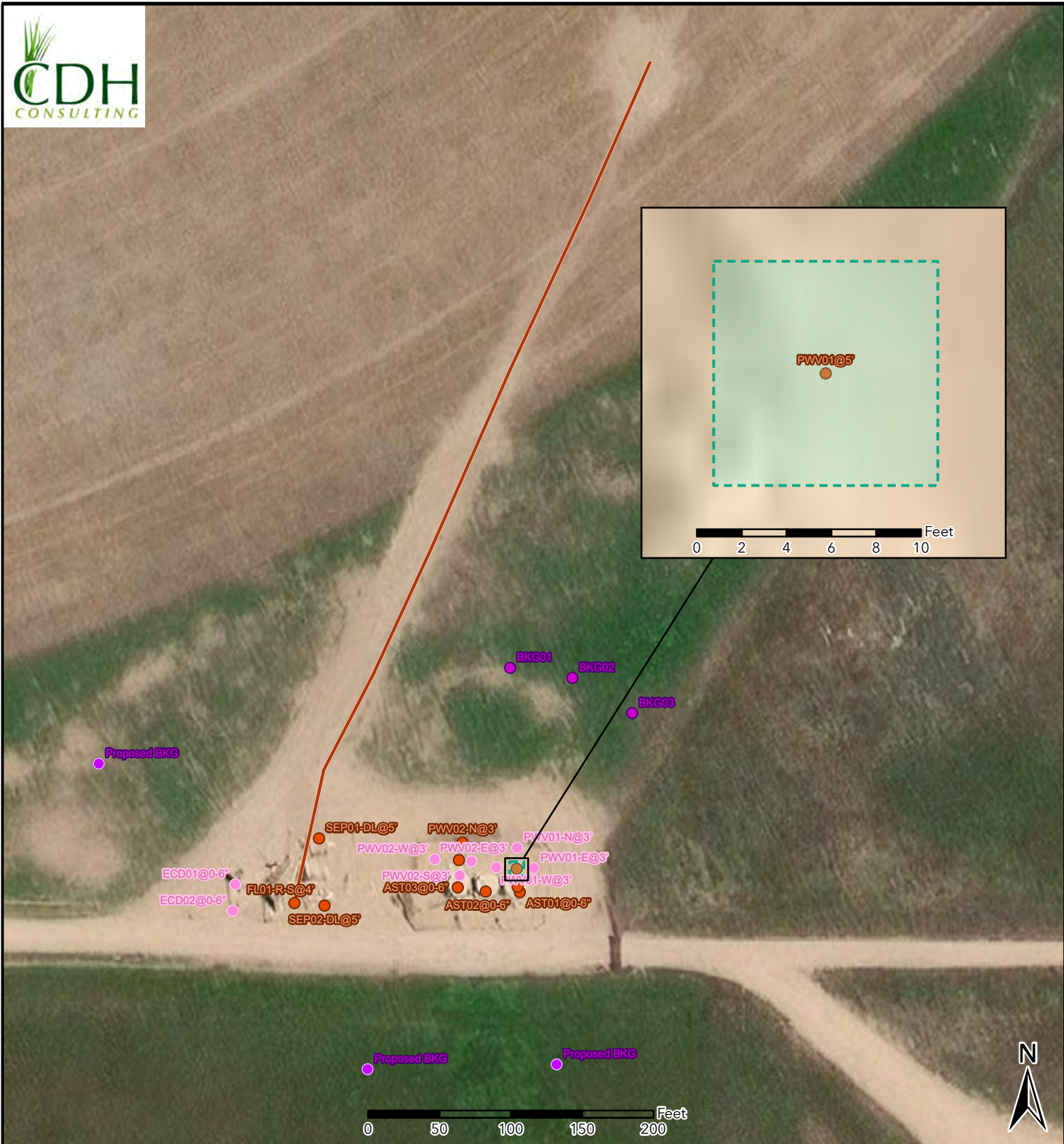


Figure 3 Supplemental Source Mass Removal Map

SATER CC 18-14
SESW-SEC 18-T4N-R63W
Weld County, Colorado
Noble Energy Inc.

- Soil Sample
- Background Sample
- Screening Point
- Proposed Background Sample
- Flowline Removed
- 10'x10' Proposed Excavation



CDH Consulting, LLC
Thornton, Colorado
720.431.7468
www.CDHConsult.com

TABLES

TABLE 1
FIELD DATA SUMMARY TABLE
NOBLE 100322
SATER CC 18-14, WELD COUNTY, COLORADO
REM # 31584

Sample ID	Sample Date	Depth (ft)	GPS Data Latitude/Longitude		PDOP Value	VOC Concentration (ppm)
AST01@0-6"	4/16/2025	0-0.5	40.304984	-104.482771	1.000000	2.1
AST02@0-6"	4/16/2025	0-0.5	40.304985	-104.482836	1.100000	0.1
AST03@0-6"	4/16/2025	0-0.5	40.304991	-104.482890	1.200000	0.3
PWV01@5'	4/16/2025	5	40.305018	-104.482777	1.000000	101.6
PWV01-N@3'	4/16/2025	3	40.305049	-104.482776	1.100000	0.4
PWV01-E@3'	4/16/2025	3	40.305019	-104.482744	1.100000	0.8
PWV01-S@3'	4/16/2025	3	40.304992	-104.482775	2.300000	9.4
PWV01-W@3'	4/16/2025	3	40.305020	-104.482816	1.000000	1.2
PWV02@5'	4/16/2025	5	40.305031	-104.482888	1.000000	20.2
PWV02-N@3'	4/16/2025	3	40.305057	-104.482881	1.000000	19.8
PWV02-E@3'	4/16/2025	3	40.305029	-104.482864	1.900000	0.3
PWV02-S@3'	4/16/2025	3	40.305008	-104.482886	1.000000	10.6
PWV02-W@3'	4/16/2025	3	40.305032	-104.482934	1.800000	1.2
SEP01-DL@5'	4/16/2025	5	40.305062	-104.483156	1.000000	68.0
SEP02-DL@5'	4/16/2025	5	40.304964	-104.483146	1.100000	15.2
ECD01@0-6"	4/16/2025	0-0.5	40.304995	-104.483317	0.900000	NM
ECD02@0-6"	4/16/2025	0-0.5	40.304957	-104.483322	0.900000	NM
FL01-R-S@4'	4/16/2025	4	40.304968	-104.483203	1.100000	0.2
BKG01@0-6"	4/21/2025	0-0.5	40.305312	-104.482790	1.500000	3.0
BKG01@3'	4/21/2025	3	40.305312	-104.482790	1.500000	3.1
BKG01@5'	4/21/2025	5	40.305312	-104.482790	1.500000	3.2
BKG02@0-6"	4/21/2025	0-0.5	40.305297	-104.482670	1.300000	1.4
BKG02@3'	4/21/2025	3	40.305297	-104.482670	1.300000	5.2
BKG02@5'	4/21/2025	5	40.305297	-104.482670	1.300000	6.9
BKG03@0-6"	4/21/2025	0-0.5	40.305246	-104.482555	1.500000	3.8
BKG03@3'	4/21/2025	3	40.305246	-104.482555	1.500000	4.7
BKG03@5'	4/21/2025	5	40.305246	-104.482555	1.500000	6.8

1. Global Positioning System (GPS) data is provided in decimal degrees using North American Datum (NAD) 83 UTM Zone 13 North.
 2. Volatile organic compound (VOC) concentrations are measured in the field using a photoionization detector (PID).
- PDOP = Position Dilution of Precision
ppm = Parts per million
ft = Feet
NM = Not measured

TABLE 2
SUMMARY OF VOLATILE ORGANIC SOIL CHEMISTRY DATA
NOBLE 100322
SATER CC 18-14, WELD COUNTY, COLORADO
REM # 31584

Sample ID	Sample Date	Depth (ft)	Benzene (mg/kg)	Toluene (mg/kg)	Ethyl-Benzene (mg/kg)	Xylenes (mg/kg)	1,2,4-Trimethyl-Benzene (mg/kg)	1,3,5-Trimethyl-Benzene (mg/kg)	Naphthalene (mg/kg)	TPH (mg/kg)	TPH GRO (mg/kg)	TPH DRO (mg/kg)	TPH ORO (mg/kg)
ECMC Table 915-1 Limits (Residential SSL)			1.2	490	5.8	58	30	27	2	500	500**		
ECMC Table 915-1 Limits (Protection of Groundwater SSL)			0.0026	0.69	0.78	9.9	0.0081	0.0087	0.0038	500	500**		
AST01@0-6"	4/16/2025	0-0.5	<0.0020	<0.0050	<0.0050	<0.010	<0.0050	<0.0050	<0.0038	<100.50	<0.50	<50	<50
AST02@0-6"	4/16/2025	0-0.5	<0.0020	<0.0050	<0.0050	<0.010	<0.0050	<0.0050	<0.0038	<100.50	<0.50	<50	<50
AST03@0-6"	4/16/2025	0-0.5	<0.0020	<0.0050	<0.0050	<0.010	<0.0050	<0.0050	<0.0038	<100.50	<0.50	<50	<50
PWV01@5'	4/16/2025	5	<0.0020	0.0088	<0.0050	0.012	0.0083	<0.0050	<0.0038	<100.50	<0.50	<50	<50
PWV01-S@3'	4/16/2025	3	<0.0020	<0.0050	<0.0050	<0.010	<0.0050	<0.0050	<0.0038	<100.50	<0.50	<50	<50
PWV02@5'	4/16/2025	5	<0.0020	<0.0050	<0.0050	<0.010	<0.0050	<0.0050	<0.0038	<100.50	<0.50	<50	<50
PWV02-N@3'	4/16/2025	3	<0.0020	<0.0050	<0.0050	<0.010	<0.0050	<0.0050	<0.0038	<100.50	<0.50	<50	<50
SEP01-DL@5'	4/16/2025	5	<0.00200	0.0079	<0.0050	0.013	0.0074	<0.050	<0.0038	<100.50	<0.50	<50	<50
SEP02-DL@5'	4/16/2025	5	<0.0020	<0.0050	<0.0050	<0.010	<0.0050	<0.0050	<0.0038	<100.50	<0.50	<50	<50
FL01-R-S@4'	4/16/2025	4	<0.0020	<0.0050	<0.0050	<0.010	<0.0050	<0.0050	<0.0038	<100.50	<0.50	<50	<50

1. Bold values exceed the ECMC Table 915-1 limit(s)
 2. Red & blue highlighted soil analytical values indicate an exceedance of the referenced soil screening level (SSL)
 3. * Indicates laboratory minimum detection limit in excess of SSL
 4. ** Summation of GRO+DRO+ORO must be less than 500 mg/kg
- (<) = Analytical result is less than the indicated laboratory reporting limit.
TPH-GRO = Total petroleum hydrocarbons - gasoline range organics
TPH-DRO = Total petroleum hydrocarbons - diesel range organics
TPH-ORO = Total petroleum hydrocarbons - oil range organics
mg/kg = Milligrams per kilogram
ft = Feet

TABLE 3
SUMMARY OF POLYCYCLIC AROMATIC HYDROCARBON SOIL CHEMISTRY DATA
NOBLE 100322
SATER CC 18-14, WELD COUNTY, COLORADO
REM # 31584

Sample ID	Sample Date	Depth (ft)	Acenaphthene (mg/kg)	Anthracene (mg/kg)	Benzo (a) Anthracene (mg/kg)	Benzo (a) Pyrene (mg/kg)	Benzo (b) Fluoranthene (mg/kg)	Benzo (k) Fluoranthene (mg/kg)	Chrysene (mg/kg)	Dibenzo (a,h) Anthracene (mg/kg)	Fluoranthene (mg/kg)	Fluorene (mg/kg)	Indeno (1,2,3-cd) Pyrene (mg/kg)	Pyrene (mg/kg)	1-Methyl - Naphthalene (mg/kg)	2-Methyl - Naphthalene (mg/kg)
ECMC Table 915-1 Limits (Residential SSL)			360	1800	1.1	0.11	1.1	11	110	0.11	240	240	1.1	180	18	24
ECMC Table 915-1 Limits (Protection of Groundwater SSL)			0.55	5.8	0.011	0.24	0.3	2.9	9	0.096	8.9	0.54	0.98	1.3	0.006	0.019
AST01@0-6"	4/16/2025	0-0.5	<0.00500	<0.00500	<0.00500	<0.00500	<0.00500	<0.00500	<0.00500	<0.00500	<0.00500	<0.00500	<0.00500	<0.00500	<0.00500	<0.00500
AST02@0-6"	4/16/2025	0-0.5	<0.00500	<0.00500	<0.00500	<0.00500	<0.00500	<0.00500	<0.00500	<0.00500	<0.00500	<0.00500	<0.00500	<0.00500	<0.00500	<0.00500
AST03@0-6"	4/16/2025	0-0.5	<0.00500	<0.00500	<0.00500	<0.00500	<0.00500	<0.00500	<0.00500	<0.00500	<0.00500	<0.00500	<0.00500	<0.00500	<0.00500	<0.00500
PWV01@5'	4/16/2025	5	<0.00500	<0.00500	<0.00500	<0.00500	<0.00500	<0.00500	<0.00500	<0.00500	<0.00500	0.00912	<0.00500	<0.00500	0.0112	0.0156
PWV01-S@3'	4/16/2025	3	<0.00500	<0.00500	<0.00500	<0.00500	<0.00500	<0.00500	<0.00500	<0.00500	<0.00500	<0.00500	<0.00500	<0.00500	<0.00500	<0.00500
PWV02@5'	4/16/2025	5	<0.00500	<0.00500	<0.00500	<0.00500	<0.00500	<0.00500	<0.00500	<0.00500	<0.00500	<0.00500	<0.00500	<0.00500	<0.00500	<0.00500
PWV02-N@3'	4/16/2025	3	<0.00500	<0.00500	<0.00500	<0.00500	<0.00500	<0.00500	<0.00500	<0.00500	<0.00500	<0.00500	<0.00500	<0.00500	<0.00500	<0.00500
SEP01-DL@5'	4/16/2025	5	<0.00500	<0.00500	<0.00500	<0.00500	<0.00500	<0.00500	<0.00500	<0.00500	<0.00500	<0.00500	<0.00500	<0.00500	<0.00500	<0.00500
SEP02-DL@5'	4/16/2025	5	<0.00500	<0.00500	<0.00500	<0.00500	<0.00500	<0.00500	<0.00500	<0.00500	<0.00500	<0.00500	<0.00500	<0.00500	<0.00500	<0.00500
FL01-R-S@4'	4/16/2025	4	<0.00500	<0.00500	<0.00500	<0.00500	<0.00500	<0.00500	<0.00500	<0.00500	<0.00500	<0.00500	<0.00500	<0.00500	<0.00500	<0.00500

1. Bold values exceed the ECMC Table 915-1 limit(s)
 2. Red & blue highlighted soil analytical values indicate an exceedance of the referenced soil screening level (SSL)
 3. * Indicates laboratory minimum detection limit in excess of SSL
 4. ** Summation of GRO+DRO+ORO must be less than 500 mg/kg
- (<) = Analytical result is less than the indicated laboratory reporting limit.
TPH-GRO = Total petroleum hydrocarbons - gasoline range organics
TPH-DRO = Total petroleum hydrocarbons - diesel range organics
TPH-ORO = Total petroleum hydrocarbons - oil range organics
mg/kg = Milligrams per kilogram
ft = Feet
AP = Analysis pending
NA = Not analyzed

TABLE 4
SUMMARY OF SOIL SUITABILITY FOR RECLAMATION
NOBLE 100322
SATER CC 18-14, WELD COUNTY, COLORADO
REM # 31584

Sample ID	Sample Date	Depth (ft)	pH (Standard Units)	EC (mmhos/cm)	SAR (Standard Units)	Boron (mg/L)
ECMC Table 915-1 Soil Suitability Limits			6 - 8.3	<4	<6	2
AST01@0-6"	4/16/2025	0-0.5	7.61	4.45	0.185	<2.00
AST02@0-6"	4/16/2025	0-0.5	9.45	0.315	0.538	<2.00
AST03@0-6"	4/16/2025	0-0.5	9.65	0.400	1.37	<2.00
PWV01@5'	4/16/2025	5	9.66	0.226	0.109	<2.00
PWV01-S@3'	4/16/2025	3	8.35	0.139	0.00432	<2.00
PWV02@5'	4/16/2025	5	7.87	0.284	0.0886	<2.00
PWV02-N@3'	4/16/2025	3	7.46	0.128	0.0516	<2.00
SEP01-DL@5'	4/16/2025	5	8.58	0.345	0.883	<2.00
SEP02-DL@5'	4/16/2025	5	7.40	0.461	3.30	4.16
FLO1-R-S@4'	4/16/2025	4	8.06	0.271	0.0366	<2.00
BKG01@0-6"	4/21/2025	0-0.5	7.87	0.311	0.145	0.364
BKG01@3'	4/21/2025	3	8.28	0.157	0.243	0.119
BKG01@5'	4/21/2025	5	8.29	0.176	0.222	0.0952
BKG02@0-6"	4/21/2025	0-0.5	7.61	0.498	0.174	0.610
BKG02@3'	4/21/2025	3	8.34	0.137	0.176	0.0800
BKG02@5'	4/21/2025	5	8.28	0.149	0.208	0.0918
BKG03@0-6"	4/21/2025	0-0.5	7.66	0.62	0.272	0.722
BKG03@3'	4/21/2025	3	7.85	0.213	0.121	0.119
BKG03@5'	4/21/2025	5	8.01	0.195	0.142	0.103
Maximum Background Concentration			8.34	0.620	0.272	0.722

1. **Bold** faced values exceed the ECMC Table 915-1 limit(s), but are within background concentrations.

2. **Bold** faced values exceed the ECMC Table 915-1 limit(s) and native background concentrations.

3. **Brown highlighted** soil analytical values indicate a regulatory exceedance.

NA = Not analyzed

TABLE 5
SUMMARY OF METALS IN SOIL CHEMISTRY DATA
NOBLE 100322
SATER CC 18-14, WELD COUNTY, COLORADO
REM # 31584

Sample ID	Sample Date	Depth (ft)	Arsenic (mg/kg)	Barium (mg/kg)	Cadmium (mg/kg)	Chromium (VI) (mg/kg)	Copper (mg/kg)	Lead (mg/kg)	Nickel (mg/kg)	Selenium (mg/kg)	Silver (mg/kg)	Zinc (mg/kg)
ECMC Table 915-1 Limits (Residential SSL)			0.68	15000	71	0.3	3100	400	1500	390	390	23000
ECMC Table 915-1 Limits (Protection of Groundwater SSL)			0.29	82	0.38	0.00067	46	14	26	0.26	0.8	370
AST01@0-6"	4/16/2025	0-0.5	0.851	37.3	<0.200	<0.30 *	2.21	2.49	1.38	<0.260	<0.0200	4.90
AST02@0-6"	4/16/2025	0-0.5	0.831	32.4	<0.200	<0.30 *	2.05	2.10	1.32	<0.260	<0.0200	4.18
AST03@0-6"	4/16/2025	0-0.5	0.542	48.0	<0.200	<0.30 *	1.59	3.30	1.23	<0.260	0.0223	4.52
PWV01@5'	4/16/2025	5	0.725	42.8	<0.200	<0.30 *	1.34	3.39	1.31	<0.260	<0.0200	4.89
PWV01-S@3'	4/16/2025	3	0.643	42.2	<0.200	<0.30 *	1.18	3.47	1.20	<0.260	<0.0200	4.89
PWV02@5'	4/16/2025	5	0.718	39.5	<0.200	<0.30 *	1.41	3.47	1.24	<0.260	<0.0200	4.86
PWV02-N@3'	4/16/2025	3	0.698	40.9	<0.200	<0.30 *	1.82	3.48	1.17	<0.260	<0.0200	4.32
SEP01-DL@5'	4/16/2025	5	0.527	120	<0.200	<0.30 *	1.53	3.59	1.21	<0.260	<0.0200	4.63
SEP02-DL@5'	4/16/2025	5	0.618	35.7	<0.200	<0.30 *	1.11	3.29	1.08	<0.260	<0.0200	4.42
FL01-R-S@4'	4/16/2025	4	0.565	36.2	<0.200	<0.30 *	1.22	3.81	1.05	<0.260	<0.0200	4.60
BKG01@0-6"	4/21/2025	0-0.5	1.22	38.0	0.0981	<1.00*	3.97	3.97	2.91	0.270	0.102	20.0
BKG01@3'	4/21/2025	3	1.91	65.6	<1.00	<1.00*	3.99	3.58	4.55	0.382	<0.500	17.8
BKG01@5'	4/21/2025	5	1.78	57.5	0.0932	<1.00*	3.63	3.27	4.11	0.329	<0.500	19.0
BKG02@0-6"	4/21/2025	0-0.5	1.35	41.2	0.150	<1.00*	5.36	4.47	3.21	0.279	<0.500	30.0
BKG02@3'	4/21/2025	3	1.86	72.1	0.102	<1.00*	3.62	3.22	4.15	0.315	<0.500	15.7
BKG02@5'	4/21/2025	5	1.55	58.5	<1.00	<1.00*	3.20	2.82	3.37	0.273	<0.500	13.3
BKG03@0-6"	4/21/2025	0-0.5	1.64	67.6	0.165	<1.00*	7.63	4.19	3.69	0.309	<0.500	35.4
BKG03@3'	4/21/2025	3	16.9	213	<1.00	<1.00*	3.63	2.14	6.82	0.280	<0.500	11.9
BKG03@5'	4/21/2025	5	11.6	178	0.119	<1.00*	3.57	2.50	5.95	0.273	<0.500	13.9
1.25x Maximum Background Concentration			21.1	266	0.206	NA	9.54	5.59	8.53	0.478	0.128	44.3

- Bold** faced values exceed the ECMC Table 915-1 limit(s), but are within 1.25x background concentrations.
- Red** faced values exceed the ECMC Table 915-1 limit(s) and native background concentrations.
- Red & blue highlighted soil analytical values indicate an exceedance of the referenced soil screening level (SSL).
- Non-detect background results accounted for in the highest background concentration by using the reporting limit.

ECMC = Energy & Carbon Management Commission

(<) = Analytical result is less than the indicated laboratory reporting limit.

mg/kg = Milligrams per kilogram

ft = Feet

* Indicates laboratory minimum detection limit in excess of SSL

NA = Not analyzed



CDH Consulting, LLC
Thornton, Colorado
720.431.7468
www.CDHConsult.com

PHOTOGRAPHIC LOG

Photographic Log

SATER CC 18-14 Tank Battery – REM 31584

Noble Energy Inc.

4/16/2025 and 4/21/2025



Photo 1: View of PWV01, facing northeast

Photographic Log

SATER CC 18-14 Tank Battery – REM 31584

Noble Energy Inc.

4/16/2025 and 4/21/2025



Photo 2: View of PWV02, facing northeast

Photographic Log

SATER CC 18-14 Tank Battery – REM 31584

Noble Energy Inc.

4/16/2025 and 4/21/2025



Photo 3: View of AST01, facing northwest

Photographic Log

SATER CC 18-14 Tank Battery – REM 31584

Noble Energy Inc.

4/16/2025 and 4/21/2025



Photo 4: View of AST02, facing northwest

Photographic Log

SATER CC 18-14 Tank Battery – REM 31584

Noble Energy Inc.

4/16/2025 and 4/21/2025



Photo 5: View of AST03, facing northwest

Photographic Log

SATER CC 18-14 Tank Battery – REM 31584

Noble Energy Inc.

4/16/2025 and 4/21/2025



Photo 6: View of SEP01-DL, facing southeast

Photographic Log
SATER CC 18-14 Tank Battery – REM 31584
Noble Energy Inc.
4/16/2025 and 4/21/2025



Photo 7: View of SEP02-DL, facing north

Photographic Log

SATER CC 18-14 Tank Battery – REM 31584

Noble Energy Inc.

4/16/2025 and 4/21/2025

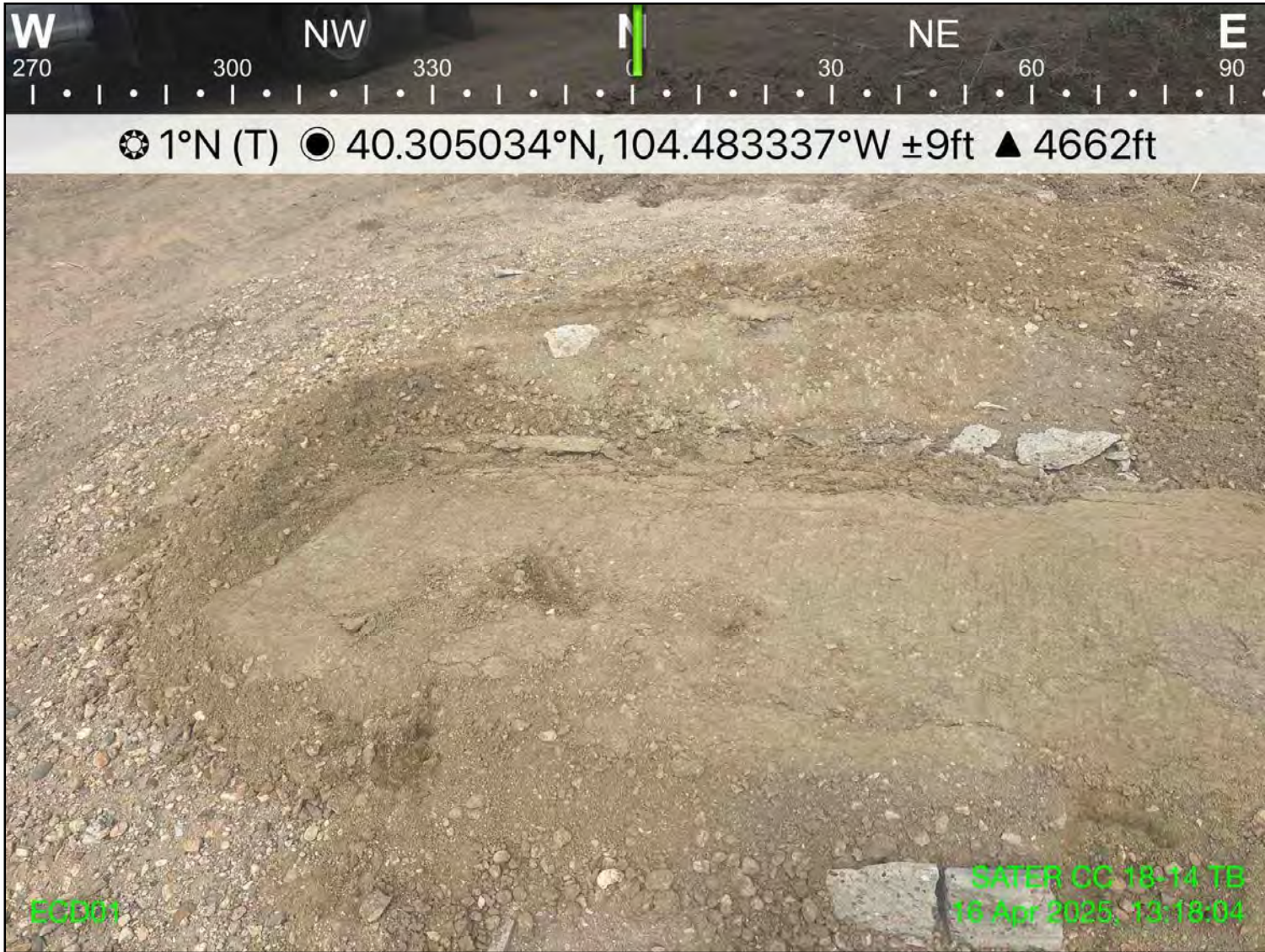


Photo 8: View of ECD01, facing north

Photographic Log

SATER CC 18-14 Tank Battery – REM 31584

Noble Energy Inc.

4/16/2025 and 4/21/2025



Photo 9: View of ECD02, facing south

Photographic Log

SATER CC 18-14 Tank Battery – REM 31584

Noble Energy Inc.

4/16/2025 and 4/21/2025



Photo 10: View of BKG01, facing northeast

Photographic Log

SATER CC 18-14 Tank Battery – REM 31584

Noble Energy Inc.

4/16/2025 and 4/21/2025



Photo 11: View of BKG02, facing east

Photographic Log

SATER CC 18-14 Tank Battery – REM 31584

Noble Energy Inc.

4/16/2025 and 4/21/2025



Photo 12: View of BKG03, facing southeast