

EXCAVATION REPORT
BRUNTZ G16-23 FLOWLINE
ECMC SPILL TRACKING # 487465
ECMC REMEDIATION # 32833

Prepared for:

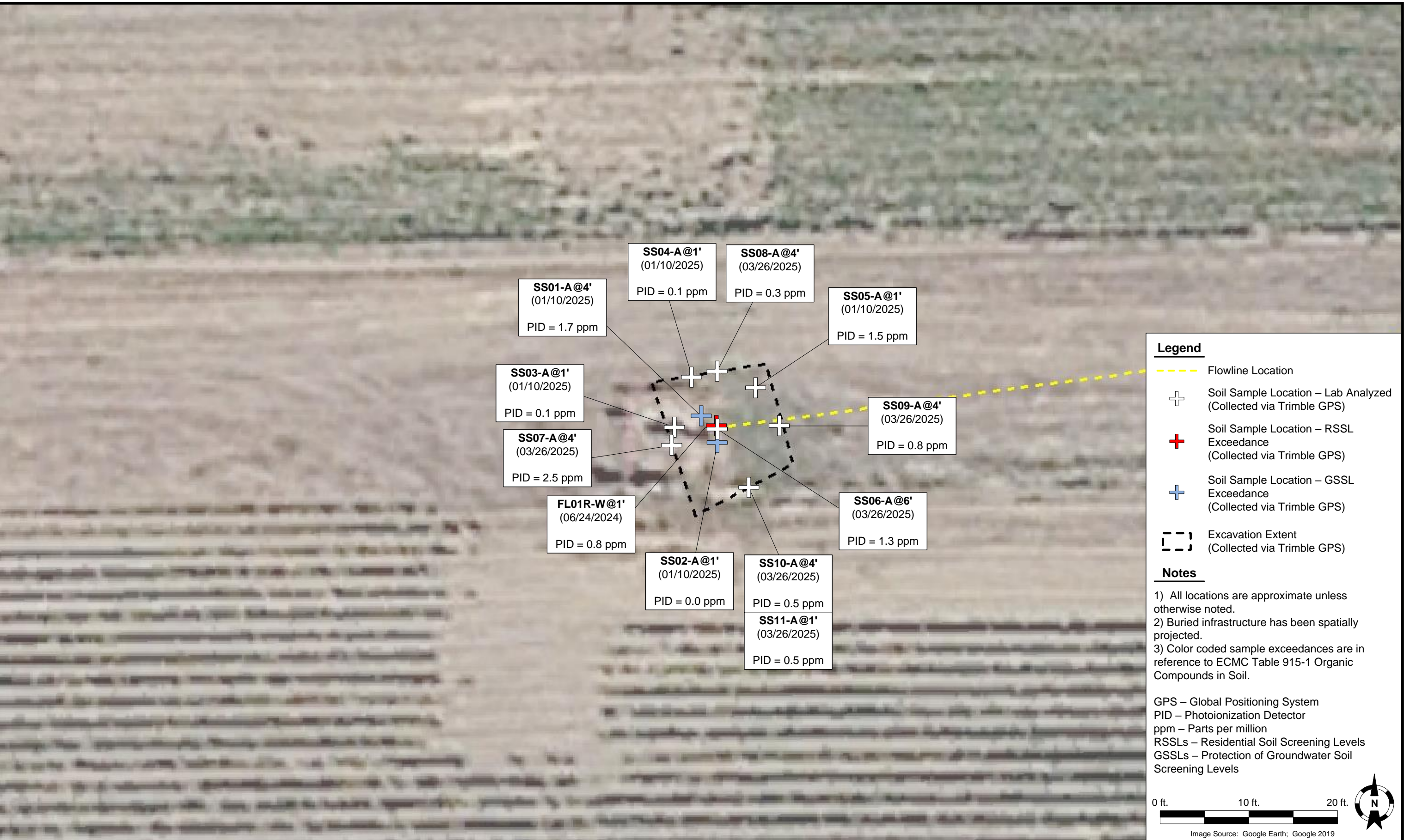


1099 18th Street
Suite 1500
Denver, CO 80202

Prepared by:



4725 Independence Street
Wheat Ridge, CO 80033



DATE: June 26, 2025

DESIGNED BY: J. Whritenour

DRAWN BY: L. Reed



Noble Energy, Inc. – 100322 – DJ Basin
Bruntz G16-23 Flowline
 NESE, Section 16, Township 4 North, Range 65 West
 Weld County, Colorado

SOIL SAMPLE LOCATION MAP (FLR01-W)

FIGURE 1



DATE: June 23, 2025

DESIGNED BY: J. Whritenour

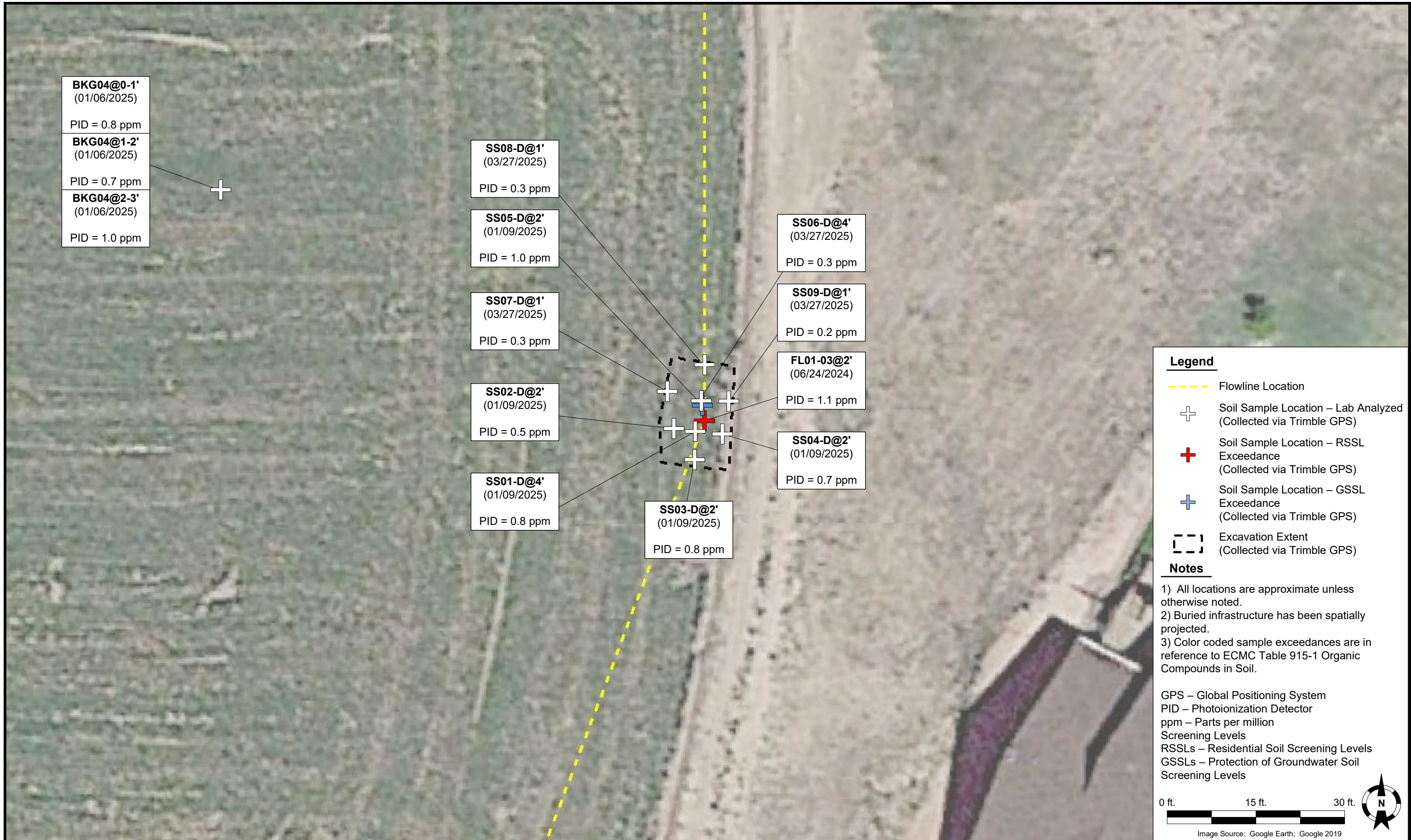
DRAWN BY: L. Reed



Noble Energy, Inc. – 100322 – DJ Basin
Bruntz G16-23 Flowline
 NESE, Section 16, Township 4 North, Range 65 West
 Weld County, Colorado

SOIL SAMPLE
 LOCATION MAP
 (FL01-01)

FIGURE
 2



Legend

- Flowline Location
- + Soil Sample Location – Lab Analyzed (Collected via Trimble GPS)
- + Soil Sample Location – RSSL Exceedance (Collected via Trimble GPS)
- + Soil Sample Location – GSSL Exceedance (Collected via Trimble GPS)
- - - Excavation Extent (Collected via Trimble GPS)

Notes

- 1) All locations are approximate unless otherwise noted.
- 2) Buried infrastructure has been spatially projected.
- 3) Color coded sample exceedances are in reference to ECMC Table 915-1 Organic Compounds in Soil.

GPS – Global Positioning System
 PID – Photoionization Detector
 ppm – Parts per million
 Screening Levels
 RSSLs – Residential Soil Screening Levels
 GSSLs – Protection of Groundwater Soil Screening Levels

0 ft. 15 ft. 30 ft.

Image Source: Google Earth; Google 2019

DATE:	June 23, 2025
DESIGNED BY:	JW
DRAWN BY:	J. Woffinden



Noble Energy, Inc. – 100322 – DJ Basin
Bruntz G16-23 Flowline
 NESE, Section 16, Township 4 North, Range 65 West
 Weld County, Colorado

SOIL SAMPLE
 LOCATION MAP
 (FL01-03)

FIGURE
 3



Legend

- Groundwater Sample Location (Collected via Trimble GPS)
- Flowline Location
- Soil Sample Location – Lab Analyzed (Collected via Trimble GPS)
- Soil Sample Location – RSSL Exceedance (Collected via Trimble GPS)
- Soil Sample Location – GSSL Exceedance (Collected via Trimble GPS)
- Excavation Extent (Collected via Trimble GPS)

Notes

- 1) All locations are approximate unless otherwise noted.
- 2) Buried infrastructure has been spatially projected.
- 3) Color coded sample exceedances are in reference to ECMC Table 915-1 Organic Compounds in Soil.

GPS – Global Positioning System
 PID – Photoionization Detector
 ppm – Parts per million
 RSSLs – Residential Soil Screening Levels
 GSSLs – Protection of Groundwater Soil Screening Levels

0 ft. 10 ft. 20 ft.

Image Source: Google Earth; Google 2019

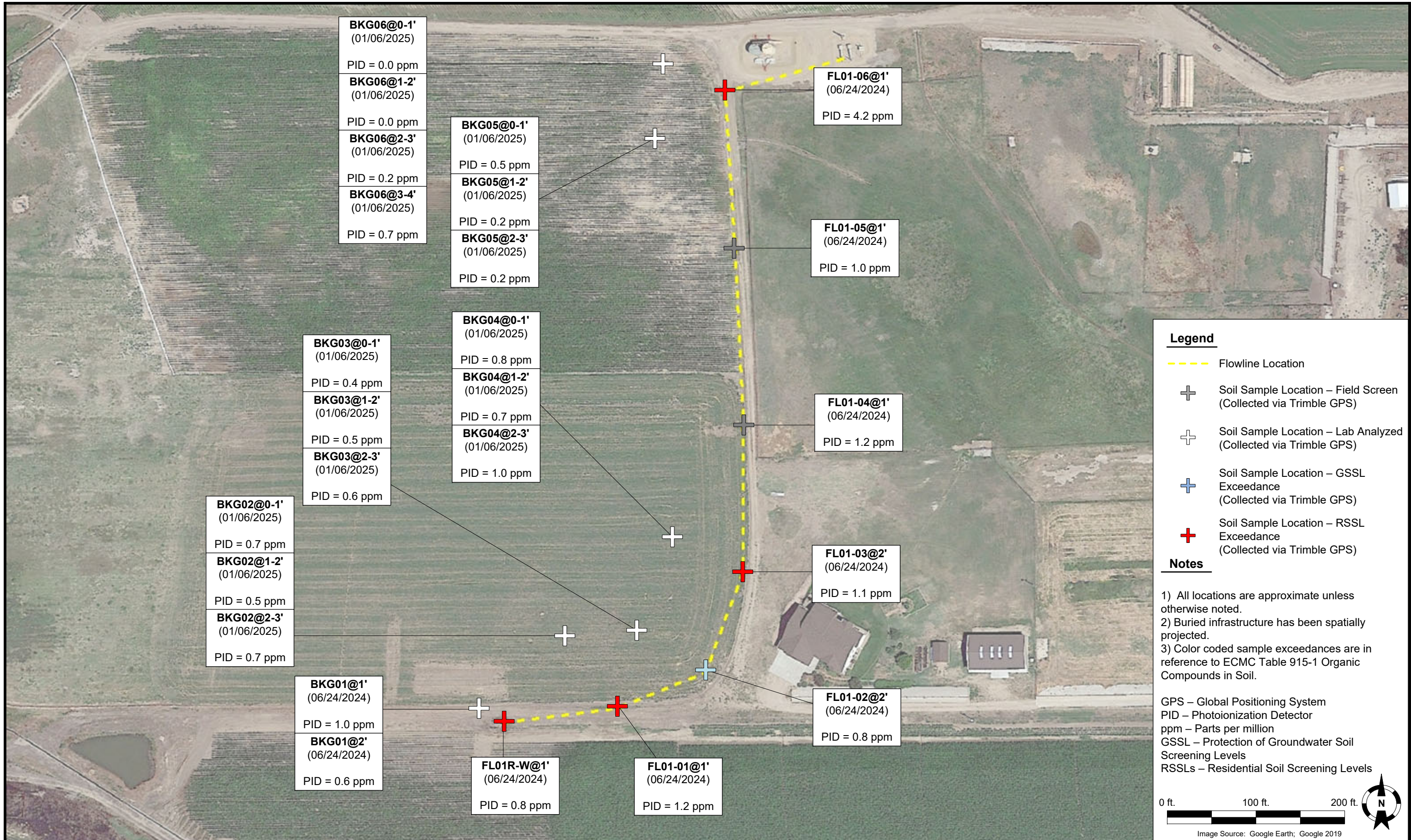
DATE:	June 23, 2025
DESIGNED BY:	JW
DRAWN BY:	J. Woffinden



Noble Energy, Inc. – 100322 – DJ Basin
Bruntz G16-23 Flowline
 NESE, Section 16, Township 4 North, Range 65 West
 Weld County, Colorado

SOIL SAMPLE
 LOCATION MAP
 (FL01-06)

FIGURE
 4



Legend

- Flowline Location
- + Soil Sample Location – Field Screen (Collected via Trimble GPS)
- + Soil Sample Location – Lab Analyzed (Collected via Trimble GPS)
- + Soil Sample Location – GSSL Exceedance (Collected via Trimble GPS)
- + Soil Sample Location – RSSL Exceedance (Collected via Trimble GPS)

Notes

- 1) All locations are approximate unless otherwise noted.
- 2) Buried infrastructure has been spatially projected.
- 3) Color coded sample exceedances are in reference to ECMC Table 915-1 Organic Compounds in Soil.

GPS – Global Positioning System
 PID – Photoionization Detector
 ppm – Parts per million
 GSSL – Protection of Groundwater Soil Screening Levels
 RSSLs – Residential Soil Screening Levels

0 ft. 100 ft. 200 ft.

Image Source: Google Earth; Google 2019

DATE: 01/09/2025

DESIGNED BY: JW

DRAWN BY: LR



Noble Energy, Inc. – 100322 – DJ Basin
Bruntz G16-23 Flowline
 NESE, Section 16, Township 4 North, Range 65 West
 Weld County, Colorado

SOIL SAMPLE LOCATION MAP (FLOWLINE)

FIGURE 5

TABLE 1
FIELD DATA SUMMARY TABLE
NOBLE ENERGY, INC. - 100322
BRUNTZ G16-23 FLOWLINE , WELD COUNTY, COLORADO
REM #32833

Sample ID	Sample Date	Depth (ft. bgs)	GPS Data ⁽¹⁾		PDOP Value	VOC Concentration ⁽²⁾ (ppm)
			Latitude	Longitude		
FL01R-W@1'	6/24/2024	1	40.308760	-104.663704	0.8	0.8
SS01-A@4'	1/10/2025	4	40.308764	-104.663712	1.3	1.7
SS02-A@1'	1/10/2025	1	40.308755	-104.663705	0.8	0.0
SS03-A@1'	1/10/2025	1	40.308760	-104.663722	0.8	0.1
SS04-A@1'	1/10/2025	1	40.308776	-104.663715	0.8	0.1
SS05-A@1'	1/10/2025	1	40.308772	-104.663688	0.8	1.5
SS06-A@6'	3/26/2025	6	40.308759	-104.663704	0.8	1.3
SS07-A@4'	3/26/2025	4	40.308754	-104.663723	0.9	2.5
SS08-A@4'	3/26/2025	4	40.308778	-104.663704	0.9	0.3
SS09-A@4'	3/26/2025	4	40.308760	-104.663678	1.0	0.8
SS10-A@4'	3/26/2025	4	40.308740	-104.663691	1.0	0.5
SS11-A@1'	3/26/2025	1	40.308740	-104.663691	1.0	0.5
FL01-01@1'	6/24/2024	1	40.308804	-104.663245	0.8	1.2
SS01-B@4'	1/10/2025	4	40.308804	-104.663243	0.9	1.0
SS02-B@1'	1/10/2025	1	40.308816	-104.663242	0.8	1.3
SS03-B@1'	1/10/2025	1	40.308804	-104.663225	0.8	1.2
SS04-B@1'	1/10/2025	1	40.308791	-104.663245	0.8	2.5
SS05-B@1'	1/10/2025	1	40.308804	-104.663269	0.8	1.8
SS06-B@4'	3/26/2025	4	40.308805	-104.663270	1.1	0.6
SS07-B@1'	3/26/2025	1	40.308801	-104.663292	1.1	0.0
FL01-02@2'	6/24/2024	2	40.308914	-104.662884	0.8	0.8
SS01-C@4'	1/10/2025	4	40.308909	-104.662888	0.8	0.3
SS02-C@2'	1/10/2025	2	40.308911	-104.662907	0.8	0.8
SS03-C@2'	1/10/2025	2	40.308928	-104.662888	0.9	1.0
SS04-C@2'	1/10/2025	2	40.308908	-104.662871	0.8	1.0
SS05-C@2'	1/10/2025	2	40.308895	-104.662895	1.0	0.8
FL01-03@2'	6/24/2024	2	40.309221	-104.662733	0.9	1.1
SS01-D@4'	1/9/2025	4	40.309216	-104.662738	1.0	0.8
SS02-D@2'	1/9/2025	2	40.309218	-104.662751	0.9	0.5
SS03-D@2'	1/9/2025	2	40.309203	-104.662738	0.9	0.8
SS04-D@2'	1/9/2025	2	40.309215	-104.662721	0.8	0.8
SS05-D@2'	1/9/2025	2	40.309228	-104.662733	0.8	1.0
SS06-D@4'	03/27/2025	4	40.309230	-104.662734	0.9	0.3
SS07-D@1'	3/27/2025	1	40.309235	-104.662755	0.8	0.3
SS08-D@1'	3/27/2025	1	40.309247	-104.662733	0.8	0.3
SS09-D@1'	3/27/2025	1	40.309230	-104.662718	0.8	0.2
FL01-06@1'	6/24/2024	1	40.310710	-104.662799	0.8	4.2
SS01-E@3'	1/9/2025	3	40.310715	-104.662791	0.9	0.6
SS02-E@1'	1/9/2025	1	40.310713	-104.662812	0.9	0.8
SS03-E@1'	1/9/2025	1	40.310698	-104.662793	1.0	0.4
SS04-E@1'	1/9/2025	1	40.310712	-104.662771	1.0	0.7
SS05-E@1'	1/9/2025	1	40.310728	-104.662794	0.9	0.4
GW01	3/27/2025	4	40.310697	-104.662779	0.8	NC
BKG01@1'	6/24/2024	1	40.308801	-104.663803	0.9	1.0
BKG01@3'	6/24/2024	2	40.308801	-104.663803	0.9	0.6
BG02@0-1	1/6/2025	0-1	40.309024	-104.663457	1.0	0.7
BG02@1-2	1/7/2025	1-2	40.309024	-104.663457	1.0	0.5

TABLE 1
FIELD DATA SUMMARY TABLE
NOBLE ENERGY, INC. - 100322
BRUNTZ G16-23 FLOWLINE , WELD COUNTY, COLORADO
REM #32833

Sample ID	Sample Date	Depth (ft. bgs)	GPS Data ⁽¹⁾		PDOP Value	VOC Concentration ⁽²⁾ (ppm)
			Latitude/Longitude			
BG02@2-3	1/8/2025	2-3	40.309024	-104.663457	1.0	0.7
BG03@0-1	1/9/2025	0-1	40.309042	-104.663163	1.0	0.4
BG03@1-2	1/10/2025	1-2	40.309042	-104.663163	1.0	0.5
BG03@2-3	1/11/2025	2-3	40.309042	-104.663163	1.0	0.6
BG04@0-1	1/12/2025	0-1	40.309329	-104.663025	1.0	0.8
BG04@1-2	1/13/2025	1-2	40.309329	-104.663025	1.0	0.7
BG04@2-3	1/14/2025	2-3	40.309329	-104.663025	1.0	1.0
BG05@0-1	1/15/2025	0-1	40.310563	-104.663082	1.0	0.5
BG05@1-2	1/16/2025	1-2	40.310563	-104.663082	1.0	0.2
BG05@2-3	1/17/2025	2-3	40.310563	-104.663082	1.0	0.2
BG06@0-1	1/18/2025	0-1	40.310791	-104.663051	0.9	0.0
BG06@1-2	1/19/2025	1-2	40.310791	-104.663051	0.9	0.0
BG06@2-3	1/20/2025	2-3	40.310791	-104.663051	0.9	0.2
BG06@3-4	1/21/2025	3-4	40.310791	-104.663051	0.9	0.7

Notes:

1. Global Positioning System (GPS) data is provided in decimal degrees using North American Datum (NAD) 83 UTM Zone 13 North.

2. Volatile organic compound (VOC) concentrations are measured in the field using a photoionization detector (PID).

PDOP = Position Dilution of Precision

ppm = Parts per million

ft. = Feet

bgs = Below ground surface

NC = Not collected

TABLE 2
SUMMARY OF VOLATILE ORGANIC SOIL CHEMISTRY DATA
NOBLE ENERGY, INC. - 100322
BRUNTZ G16-23 FLOWLINE, WELD COUNTY, COLORADO
REM #32833

Sample ID	Sample Date	Depth (ft. bgs)	Benzene (mg/kg)	Toluene (mg/kg)	Ethyl-Benzene (mg/kg)	Xylenes (mg/kg)	1,2,4-Trimethyl-Benzene (mg/kg)	1,3,5-Trimethyl-Benzene (mg/kg)	Naphthalene (mg/kg)	TPH (mg/kg)	TPH GRO (mg/kg)	TPH DRO (mg/kg)	TPH ORO (mg/kg)
ECMC Table 915-1 Limits (Residential SSL)			1.2	490	5.8	58	30	27	2	500	500**		
ECMC Table 915-1 Limits (Protection of Groundwater SSL)			0.0026	0.69	0.78	9.9	0.0081	0.0087	0.0038	500	500**		
FL01R-W@1'	6/24/2024	1	<0.0020	<0.0050	<0.0050	<0.010	<0.0050	<0.0050	<0.0038	<50	<0.50	<50	<50
SS01-A@4'	1/10/2025	4	<0.0020	<0.0050	<0.0050	<0.010	<0.0050	<0.0050	<0.0038	<50	<0.50	<50	<50
SS02-A@1'	1/10/2025	1	<0.0020	<0.0050	<0.0050	<0.010	<0.0050	<0.0050	<0.0038	<50	<0.50	<50	<50
SS03-A@1'	1/10/2025	1	<0.0020	<0.0050	<0.0050	<0.010	<0.0050	<0.0050	<0.0038	<50	<0.50	<50	<50
SS04-A@1'	1/10/2025	1	<0.0020	<0.0050	<0.0050	<0.010	<0.0050	<0.0050	<0.0038	<50	<0.50	<50	<50
SS05-A@1'	1/10/2025	1	<0.0020	<0.0050	<0.0050	<0.010	<0.0050	<0.0050	<0.0038	<50	<0.50	<50	<50
SS06-A@6'	3/26/2025	6	<0.0020	<0.0050	<0.0050	<0.010	<0.0050	<0.0050	<0.0038	<50	<0.50	<50	<50
SS07-A@4'	3/26/2025	4	<0.0020	<0.0050	<0.0050	<0.010	<0.0050	<0.0050	<0.0038	<50	<0.50	<50	<50
SS08-A@4'	3/26/2025	4	<0.0020	<0.0050	<0.0050	<0.010	<0.0050	<0.0050	<0.0038	<50	<0.50	<50	<50
SS09-A@4'	3/26/2025	4	<0.0020	<0.0050	<0.0050	<0.010	<0.0050	<0.0050	<0.0038	<50	<0.50	<50	<50
SS10-A@4'	3/26/2025	4	<0.0020	<0.0050	<0.0050	<0.010	<0.0050	<0.0050	<0.0038	<50	<0.50	<50	<50
SS11-A@1'	3/26/2025	1	<0.0020	<0.0050	<0.0050	<0.010	<0.0050	<0.0050	<0.0038	<50	<0.50	<50	<50
FL01-01@1'	6/24/2024	1	<0.0020	<0.0050	<0.0050	<0.010	<0.0050	<0.0050	<0.0038	<50	<0.50	<50	<50
SS01-B@4'	1/10/2025	4	<0.0020	<0.0050	<0.0050	<0.010	<0.0050	<0.0050	<0.0038	<50	<0.50	<50	<50
SS02-B@1'	1/10/2025	1	<0.0020	<0.0050	<0.0050	<0.010	<0.0050	<0.0050	<0.0038	<50	<0.50	<50	<50
SS03-B@1'	1/10/2025	1	<0.0020	<0.0050	<0.0050	<0.010	<0.0050	<0.0050	<0.0038	<50	<0.50	<50	<50
SS04-B@1'	1/10/2025	1	<0.0020	<0.0050	<0.0050	<0.010	<0.0050	<0.0050	<0.0038	<50	<0.50	<50	<50
SS05-B@1'	1/10/2025	1	<0.0020	<0.0050	<0.0050	<0.010	<0.0050	<0.0050	<0.0038	<50	<0.50	<50	<50
SS06-B@4'	3/26/2025	4	<0.0020	<0.0050	<0.0050	<0.010	<0.0050	<0.0050	<0.0038	<50	<0.50	<50	<50
SS07-B@1'	3/26/2025	1	<0.0020	<0.0050	<0.0050	<0.010	<0.0050	<0.0050	<0.0038	<50	<0.50	<50	<50
FL01-02@2'	6/24/2024	2	<0.0020	<0.0050	<0.0050	<0.010	<0.0050	<0.0050	<0.0038	<50	<0.50	<50	<50
SS01-C@4'	1/10/2025	4	<0.0020	<0.0050	<0.0050	<0.010	<0.0050	<0.0050	<0.0038	<50	<0.50	<50	<50
SS02-C@2'	1/10/2025	2	<0.0020	<0.0050	<0.0050	<0.010	<0.0050	<0.0050	<0.0038	<50	<0.50	<50	<50
SS03-C@2'	1/10/2025	2	<0.0020	<0.0050	<0.0050	<0.010	<0.0050	<0.0050	<0.0038	<50	<0.50	<50	<50
SS04-C@2'	1/10/2025	2	<0.0020	<0.0050	<0.0050	<0.010	<0.0050	<0.0050	<0.0038	<50	<0.50	<50	<50
SS05-C@2'	1/10/2025	2	<0.0020	<0.0050	<0.0050	<0.010	<0.0050	<0.0050	<0.0038	<50	<0.50	<50	<50
FL01-03@2'	6/24/2024	2	<0.0020	<0.0050	<0.0050	<0.010	<0.0050	<0.0050	0.012	<50	<0.50	<50	<50
SS01-D@4'	1/10/2025	4	<0.0020	<0.0050	<0.0050	<0.010	<0.0050	<0.0050	<0.0038	<50	<0.50	<50	<50
SS02-D@2'	1/10/2025	2	<0.0020	<0.0050	<0.0050	<0.010	<0.0050	<0.0050	<0.0038	<50	<0.50	<50	<50
SS03-D@2'	1/10/2025	2	<0.0020	<0.0050	<0.0050	<0.010	<0.0050	<0.0050	<0.0038	<50	<0.50	<50	<50
SS04-D@2'	1/10/2025	2	<0.0020	<0.0050	<0.0050	<0.010	<0.0050	<0.0050	<0.0038	<50	<0.50	<50	<50
SS05-D@2'	1/10/2025	2	<0.0020	<0.0050	<0.0050	<0.010	<0.0050	<0.0050	<0.0038	<50	<0.50	<50	<50
SS06-D@4'	3/27/2025	4'	<0.0020	<0.0050	<0.0050	<0.010	<0.0050	<0.0050	<0.0038	<50	<0.50	<50	<50
SS07-D@1'	3/27/2025	1'	<0.0020	<0.0050	<0.0050	<0.010	<0.0050	<0.0050	<0.0038	<50	<0.50	<50	<50

TABLE 2
SUMMARY OF VOLATILE ORGANIC SOIL CHEMISTRY DATA
NOBLE ENERGY, INC. - 100322
BRUNTZ G16-23 FLOWLINE, WELD COUNTY, COLORADO
REM #32833

Sample ID	Sample Date	Depth (ft. bgs)	Benzene (mg/kg)	Toluene (mg/kg)	Ethyl-Benzene (mg/kg)	Xylenes (mg/kg)	1,2,4-Trimethyl-Benzene (mg/kg)	1,3,5-Trimethyl-Benzene (mg/kg)	Naphthalene (mg/kg)	TPH (mg/kg)	TPH GRO (mg/kg)	TPH DRO (mg/kg)	TPH ORO (mg/kg)
ECMC Table 915-1 Limits (Residential SSL)			1.2	490	5.8	58	30	27	2	500	500**		
ECMC Table 915-1 Limits (Protection of Groundwater SSL)			0.0026	0.69	0.78	9.9	0.0081	0.0087	0.0038	500	500**		
SS08-D@1'	3/27/2025	1'	<0.0020	<0.0050	<0.0050	<0.010	<0.0050	<0.0050	<0.0038	<50	<0.50	<50	<50
SS09-D@1'	3/27/2025	1'	<0.0020	<0.0050	<0.0050	<0.010	<0.0050	<0.0050	<0.0038	<50	<0.50	<50	<50
FL01-06@1'	6/24/2024	1	<0.0020	0.0058	<0.0050	0.012	<0.0050	<0.0050	3.3	190	<0.50	190	<50
SS01-E@3'	1/10/2025	3	<0.0020	<0.0050	<0.0050	<0.010	<0.0050	<0.0050	<0.0038	<50	<0.50	<50	<50
SS02-E@1'	1/10/2025	1	<0.0020	<0.0050	<0.0050	<0.010	<0.0050	<0.0050	<0.0038	<50	<0.50	<50	<50
SS03-E@1'	1/10/2025	1	<0.0020	<0.0050	<0.0050	<0.010	<0.0050	<0.0050	<0.0038	<50	<0.50	<50	<50
SS04-E@1'	1/10/2025	1	<0.0020	<0.0050	<0.0050	<0.010	<0.0050	<0.0050	<0.0038	<50	<0.50	<50	<50
SS05-E@1'	1/10/2025	1	<0.0020	<0.0050	<0.0050	<0.010	<0.0050	<0.0050	<0.0038	<50	<0.50	<50	<50

Notes:

ECMC = Energy & Carbon Management Commission

(<) = Analytical result is less than the indicated laboratory reporting limit.

TPH-GRO = Total petroleum hydrocarbons - gasoline range organics

TPH-DRO = Total petroleum hydrocarbons - diesel range organics

TPH-ORO = Total petroleum hydrocarbons - oil range organics

mg/kg = Milligrams per kilogram

ft. = Feet

bgs = Below ground surface

 = Material excavated and transported off site for disposal.

Bold values exceed the ECMC Table 915-1 limit(s).

Pink & blue highlighted soil analytical values indicate an exceedance of the referenced soil screening level (SSL).

** Summation of GRO+DRO+ORO must be less than 500 mg/kg.

TABLE 3
SUMMARY OF POLYCYCLIC AROMATIC HYDROCARBON SOIL CHEMISTRY DATA
NOBLE ENERGY, INC. - 100322
BRUNTZ G16-23 FLOWLINE, WELD COUNTY, COLORADO
REM #32833

Sample ID	Sample Date	Depth (ft. bgs)	Acenaphthene (mg/kg)	Anthracene (mg/kg)	Benzo (a) Anthracene (mg/kg)	Benzo (a) Pyrene (mg/kg)	Benzo (b) Fluoranthene (mg/kg)	Benzo (k) Fluoranthene (mg/kg)	Chrysene (mg/kg)	Dibenzo (a,h) Anthracene (mg/kg)	Fluoranthene (mg/kg)	Fluorene (mg/kg)	Indeno (1,2,3-cd) Pyrene (mg/kg)	Pyrene (mg/kg)	1-Methyl - Naphthalene (mg/kg)	2-Methyl- Naphthalene (mg/kg)
ECMC Table 915-1 Limits (Residential SSL)			360	1,800	1.1	0.11	1.1	11	110	0.11	240	240	1.1	180	18	24
ECMC Table 915-1 Limits (Protection of Groundwater SSL)			0.55	5.8	0.011	0.24	0.3	2.9	9	0.096	8.9	0.54	0.98	1.3	0.006	0.019
SS05-E@1'	1/9/2025	1	0.0340	0.119	0.237	0.173	0.286	0.107	0.238	0.0369	0.372	0.0554	0.105	0.375	<0.00500	<0.00500

Notes:

ECMC = Colorado Energy & Carbon Management Commission

(<) = Analytical result is less than the indicated laboratory reporting limit.

ft. = Feet

bgs = Below ground surface

mg/kg = Milligrams per kilogram

= Material excavated and transported off site for disposal.

Bold values exceed the ECMC Table 915-1 limit(s).

Pink & blue highlighted soil analytical values indicate an exceedance of the referenced soil screening level (SSL).

TABLE 4
SUMMARY OF SOIL SUITABILITY FOR RECLAMATION
NOBLE ENERGY, INC. - 100322
BRUNTZ G16-23 FLOWLINE, WELD COUNTY, COLORADO
REM #32833

Sample ID	Sample Date	Depth (ft. bgs)	pH (Standard Units)	EC (mmhos/cm)	SAR (Standard Units)	Boron (mg/L)
ECMC Table 915-1 Soil Suitability Limits			6 - 8.3	<4	<6	2
FL01R-W@1'	6/24/2024	1	8.39	0.414	0.600	<2.00
SS01-A@4'	1/10/2025	4	8.03	0.491	1.33	<2.00
SS02-A@1'	1/10/2025	1	8.49	0.388	0.675	<2.00
SS03-A@1'	1/10/2025	1	8.13	0.486	0.719	<2.00
SS04-A@1'	1/10/2025	1	7.79	0.285	0.406	<2.00
SS05-A@1'	1/10/2025	1	8.21	0.291	1.27	<2.00
SS06-A@6'	3/26/2025	6	8.03	0.609	1.62	<2.00
SS07-A@4'	3/26/2025	4	8.85	0.848	1.84	<2.00
SS08-A@4'	3/26/2025	4	7.35	0.366	0.332	<2.00
SS09-A@4'	3/26/2025	4	8.31	0.394	1.94	<2.00
SS10-A@4'	3/26/2025	4	8.14	0.354	0.360	<2.00
SS11-A@1'	3/26/2025	1	7.57	0.985	0.485	<2.00
FL01-01@1'	6/24/2024	1	7.31	0.363	1.02	<2.00
SS01-B@4'	1/10/2025	4	8.29	0.400	2.41	<2.00
SS02-B@1'	1/10/2025	1	7.55	0.166	0.625	<2.00
SS03-B@1'	1/10/2025	1	7.04	0.245	0.716	<2.00
SS04-B@1'	1/10/2025	1	7.39	0.603	1.94	<2.00
SS05-B@1'	1/10/2025	1	7.83	0.473	2.18	<2.00
SS06-B@4'	3/26/2025	4	8.30	0.491	1.99	<2.00
SS07-B@1'	3/26/2025	1	6.99	0.876	2.39	<2.00
FL01-02@2'	6/24/2024	2	7.69	0.586	4.03	<2.00
SS01-C@4'	1/10/2025	4	8.02	0.374	2.20	<2.00
SS02-C@2'	1/10/2025	2	7.27	0.233	0.656	<2.00
SS03-C@2'	1/10/2025	2	7.08	0.381	1.11	<2.00
SS04-C@2'	1/10/2025	2	7.47	0.321	0.884	<2.00
SS05-C@2'	1/10/2025	2	7.75	0.480	2.00	<2.00
FL01-03@2'	6/24/2024	2	7.77	1.60	5.32	<2.00
SS01-D@4'	1/9/2025	4	7.85	2.20	6.13	<2.00
SS02-D@2'	1/9/2025	2	7.70	5.02	9.56	<2.00
SS03-D@2'	1/9/2025	2	7.70	0.856	3.04	<2.00
SS04-D@2'	1/9/2025	2	7.89	2.65	6.99	<2.00
SS05-D@2'	1/9/2025	2	7.63	2.50	4.22	<2.00
SS06-D@4'	3/27/2025	4	8.36	0.569	2.46	<2.00
SS07-D@1'	3/27/2025	1	7.21	0.509	1.40	<2.00
SS08-D@1'	3/27/2025	1	7.86	0.317	0.513	<2.00
SS09-D@1'	3/27/2025	1	6.57	1.60	2.99	<2.00
FL01-06@1'	6/24/2024	1	8.57	6.20	23.8	<2.00

TABLE 4
SUMMARY OF SOIL SUITABILITY FOR RECLAMATION
NOBLE ENERGY, INC. - 100322
BRUNTZ G16-23 FLOWLINE, WELD COUNTY, COLORADO
REM #32833

Sample ID	Sample Date	Depth (ft. bgs)	pH (Standard Units)	EC (mmhos/cm)	SAR (Standard Units)	Boron (mg/L)
ECMC Table 915-1 Soil Suitability Limits			6 - 8.3	<4	<6	2
SS01-E@3'	1/9/2025	3	8.46	2.18	11.0	<2.00
SS02-E@1'	1/9/2025	1	8.52	6.87	17.7	<2.00
SS03-E@1'	1/9/2025	1	8.43	1.95	5.99	<2.00
SS04-E@1'	1/9/2025	1	8.24	1.56	8.68	<2.00
SS05-E@1'	1/9/2025	1	8.39	3.10	13.7	<2.00
BKG01@1'	6/24/2024	1	7.60	0.542	1.88	<2.00
BKG01@2'	6/24/2024	2	8.25	0.462	1.38	<2.00
BG02@0-1'	1/6/2025	0-1	7.14	0.204	0.252	<2.00
BG02@1-2'	1/6/2025	1-2	7.34	0.113	0.310	<2.00
BG02@2-3'	1/6/2025	2-3	7.22	0.229	0.248	<2.00
BG03@0-1'	1/6/2025	0-1	7.04	0.270	0.247	<2.00
BG03@1-2'	1/6/2025	1-2	7.44	0.153	0.205	<2.00
BG03@2-3'	1/6/2025	2-3	7.31	0.115	0.260	<2.00
BG04@0-1'	1/6/2025	0-1	6.92	0.212	0.254	<2.00
BG04@1-2'	1/6/2025	1-2	8.50	0.261	0.498	<2.00
BG04@2-3'	1/6/2025	2-3	8.07	0.169	0.389	<2.00
BG05@0-1'	1/6/2025	0-1	8.78	1.89	8.75	<2.00
BG05@1-2'	1/6/2025	1-2	8.91	0.582	1.73	<2.00
BG05@2-3'	1/6/2025	2-3	8.40	0.666	6.32	<2.00
BG06@0-1'	1/6/2025	0-1	9.32	1.87	2.75	<2.00
BG06@1-2'	1/6/2025	1-2	9.15	1.24	2.46	<2.00
BG06@2-3'	1/6/2025	2-3	9.47	0.484	1.57	<2.00
BG06@3-4'	1/6/2025	3-4	8.54	0.572	6.25	<2.00
Maximum Background Concentration			9.47	1.89	8.75	-

Notes:

ECMC = Colorado Energy & Carbon Management Commission

EC = Electrical conductivity

SAR = Sodium adsorption ratio

mmhos/cm = millimhos per centimeter

mg/L = milligram per liter

(<) = Analytical result is less than the indicated laboratory reporting limit.

ft. = Feet

bgs = Below ground surface

 = Material excavated and transported off site for disposal.

Bold faced values exceed the ECMC Table 915-1 limit(s), but are within background concentrations.

Bold faced values exceed the ECMC Table 915-1 limit(s) and native background concentrations.

Brown highlighted soil analytical values indicate a regulatory exceedance.

TABLE 5
SUMMARY OF METALS IN SOIL CHEMISTRY DATA
NOBLE ENERGY, INC. - 100322
BRUNTZ G16-23 FLOWLINE, WELD COUNTY, COLORADO
REM #32833

Sample ID	Sample Date	Depth (ft. bgs)	Arsenic (mg/kg)	Barium (mg/kg)	Cadmium (mg/kg)	Chromium (VI) ^[1] (mg/kg)	Copper (mg/kg)	Lead (mg/kg)	Nickel (mg/kg)	Selenium (mg/kg)	Silver (mg/kg)	Zinc (mg/kg)
ECMC Table 915-1 Limits (Residential SSL)			0.68	15,000	71	0.3	3,100	400	1,500	390	390	23,000
ECMC Table 915-1 Limits (Protection of Groundwater SSL)			0.29	82	0.38	0.00067	46	14	26	0.26	0.8	370
FL01R-W@1'	6/24/2024	1	0.699	59.3	0.240	<0.30	2.98	8.92	1.60	0.332	0.0567	8.74
SS01-A@4'	1/10/2025	4	4.01	88.6	0.206	<0.30	13.8	10.6	6.24	<0.260	0.0389	40.0
SS02-A@1'	1/10/2025	1	2.48	51.0	0.251	<0.30	10.2	8.67	4.00	<0.260	0.0454	29.7
SS03-A@1'	1/10/2025	1	2.85	63.1	<0.200	<0.30	8.11	7.66	5.29	<0.260	0.0478	28.6
SS04-A@1'	1/10/2025	1	3.04	64.0	<0.200	<0.30	7.93	7.82	4.74	<0.260	0.0450	28.8
SS05-A@1'	1/10/2025	1	2.76	64.1	<0.200	<0.30	6.95	6.54	4.73	<0.260	0.0300	25.7
SS06-A@6'	3/26/2025	6	2.45	71.3	<0.200	<0.30	6.30	5.39	5.90	<0.260	0.0338	22.5
SS07-A@4'	3/26/2025	4	2.78	69.1	<0.200	<0.30	9.78	7.93	6.40	<0.260	0.0453	27.6
SS08-A@4'	3/26/2025	4	2.94	65.7	<0.200	<0.30	5.56	5.22	6.99	<0.260	0.0445	22.4
SS09-A@4'	3/26/2025	4	1.56	110	<0.200	<0.30	3.49	10.0	3.80	<0.260	0.0384	12.2
SS10-A@4'	3/26/2025	4	0.937	51.8	<0.200	<0.30	3.08	8.73	1.58	<0.260	0.0705	9.26
SS11-A@1'	3/26/2025	1	0.844	56.4	0.213	<0.30	3.25	9.88	1.55	<0.260	0.085	10.2
FL01-01@1'	6/24/2024	1	0.776	50.7	0.219	<0.30	2.10	8.35	1.43	0.266	0.0724	7.87
SS01-B@4'	1/10/2025	4	2.07	58.3	<0.200	<0.30	5.63	5.35	4.02	<0.260	0.0256	22.4
SS02-B@1'	1/10/2025	1	2.76	32.8	0.309	<0.30	7.32	10.8	3.44	<0.260	0.110	31.0
SS03-B@1'	1/10/2025	1	2.10	36.8	0.216	<0.30	7.00	9.35	2.93	<0.260	0.0908	24.4
SS04-B@1'	1/10/2025	1	2.16	38.7	0.236	<0.30	7.43	10.0	2.96	<0.260	0.0801	25.4
SS05-B@1'	1/10/2025	1	2.58	50.0	0.200	<0.30	7.07	7.82	4.17	<0.260	0.0586	26.2
SS06-B@4'	3/26/2025	4	0.466	60.7	<0.200	<0.30	1.14	3.70	1.27	<0.260	0.0209	4.86
SS07-B@1'	3/26/2025	1	0.864	45.5	0.258	<0.30	3.00	10.9	1.35	<0.260	0.115	10.0
FL01-02@2'	6/24/2024	2	0.655	51.6	0.396	<0.30	2.77	12.5	1.35	<0.260	0.143	10.8
SS01-C@4'	1/10/2025	4	1.55	40.7	<0.200	<0.30	4.77	5.63	3.24	<0.260	0.0454	19.7
SS02-C@2'	1/10/2025	2	2.82	88.6	0.215	<0.30	9.41	8.05	5.14	<0.260	0.0456	38.0
SS03-C@2'	1/10/2025	2	2.44	57.2	0.227	<0.30	8.32	8.97	4.23	<0.260	0.0759	30.7
SS04-C@2'	1/10/2025	2	3.66	103	0.227	<0.30	9.38	8.72	5.52	<0.260	0.0482	38.4
SS05-C@2'	1/10/2025	2	1.97	48.6	0.234	<0.30	7.81	9.27	3.75	<0.260	0.0892	29.8
FL01-03@2'	6/24/2024	2	0.717	76.2	0.270	<0.30	2.21	8.65	1.86	<0.260	0.0992	8.49
SS01-D@4'	1/9/2025	4	2.15	51.6	<0.200	<0.30	4.82	6.48	4.08	<0.260	0.112	18.8
SS02-D@2'	1/9/2025	2	3.62	77.8	<0.200	<0.30	5.20	7.01	6.41	<0.260	0.118	20.6
SS03-D@2'	1/9/2025	2	2.20	53.4	0.215	<0.30	5.76	7.53	4.12	<0.260	0.127	21.2
SS04-D@2'	1/9/2025	2	2.75	66.3	<0.200	<0.30	4.40	6.02	5.23	<0.260	0.106	18.4
SS05-D@2'	1/9/2025	2	2.37	57.8	0.264	<0.30	6.82	9.56	4.33	<0.260	0.165	25.5

TABLE 5
SUMMARY OF METALS IN SOIL CHEMISTRY DATA
NOBLE ENERGY, INC. - 100322
BRUNTZ G16-23 FLOWLINE, WELD COUNTY, COLORADO
REM #32833

Sample ID	Sample Date	Depth (ft. bgs)	Arsenic (mg/kg)	Barium (mg/kg)	Cadmium (mg/kg)	Chromium (VI) ^[1] (mg/kg)	Copper (mg/kg)	Lead (mg/kg)	Nickel (mg/kg)	Selenium (mg/kg)	Silver (mg/kg)	Zinc (mg/kg)
ECMC Table 915-1 Limits (Residential SSL)			0.68	15,000	71	0.3	3,100	400	1,500	390	390	23,000
ECMC Table 915-1 Limits (Protection of Groundwater SSL)			0.29	82	0.38	0.00067	46	14	26	0.26	0.8	370
SS06-D@4'	03/27/2025	4	2.2	99.4	<0.200	<0.30	4.47	6.36	3.58	<0.260	0.0346	16.0
SS07-D@1'	03/27/2025	1	2.16	49.2	0.285	<0.30	6.22	9.28	3.33	<0.260	0.0867	21.0
SS08-D@1'	03/27/2025	1	1.95	46.1	0.224	<0.30	5.16	7.47	3.41	<0.260	0.0616	19.3
SS09-D@1'	03/27/2025	1	3.48	74.6	0.319	<0.30	6.84	9.59	5.04	<0.260	0.0936	22.5
FL01-06@1'	6/24/2024	1	0.692	68.1	0.296	<0.30	27.0	9.22	1.65	0.261	0.0703	13.3
SS01-E@3'	1/9/2025	3	1.76	55.0	0.216	<0.30	18.7	6.50	3.77	<0.260	0.106	20.8
SS02-E@1'	1/9/2025	1	2.07	47.7	0.210	<0.30	23.2	7.01	3.68	<0.260	0.106	21.9
SS03-E@1'	1/9/2025	1	1.71	47.0	<0.200	<0.30	4.58	5.64	3.22	<0.260	0.0846	15.7
SS04-E@1'	1/9/2025	1	1.49	46.7	<0.200	<0.30	15.9	5.29	3.39	<0.260	0.0894	17.3
SS05-E@1'	1/9/2025	1	1.94	68.5	<0.200	<0.30	14.0	6.11	3.89	<0.260	0.0997	19.2
BKG01@1'	6/24/2024	1	0.775	76.5	0.266	<0.30	2.29	9.20	1.76	<0.260	0.0807	8.78
BKG01@2'	6/24/2024	2	0.858	108	0.223	<0.30	1.96	6.97	2.35	0.313	0.0808	7.65
BG02@0-1'	1/6/2025	0-1	2.38	49.4	0.287	<0.30	5.60	9.88	4.10	<0.260	0.0917	21.9
BG02@1-2'	1/6/2025	1-2	0.994	31.4	<0.200	<0.30	2.31	2.89	2.54	<0.260	<0.0200	9.41
BG02@2-3'	1/6/2025	2-3	0.971	38.9	<0.200	<0.30	2.21	3.26	2.60	<0.260	0.0230	9.90
BG03@0-1'	1/6/2025	0-1	1.82	41.8	0.325	<0.30	5.51	9.09	3.48	<0.260	0.0991	22.2
BG03@1-2'	1/6/2025	1-2	2.08	74.9	0.209	<0.30	4.38	6.55	4.42	<0.260	0.0488	19.4
BG03@2-3'	1/6/2025	2-3	1.19	42.9	<0.200	<0.30	3.03	4.30	2.88	<0.260	0.0222	14.1
BG04@0-1'	1/6/2025	0-1	3.12	90.7	0.225	<0.30	4.54	7.76	5.07	<0.260	0.0495	21.0
BG04@1-2'	1/6/2025	1-2	1.32	47.7	<0.200	<0.30	2.92	4.32	3.52	<0.260	0.0277	12.1
BG04@2-3'	1/6/2025	2-3	3.55	68.4	0.215	<0.30	3.92	5.71	5.54	<0.260	0.0393	15.5
BG05@0-1'	1/6/2025	0-1	3.28	46.9	0.264	<0.30	6.03	9.02	3.29	<0.260	0.0557	19.6
BG05@1-2'	1/6/2025	1-2	2.31	59.7	<0.200	<0.30	4.24	6.84	4.48	<0.260	0.0284	17.8
BG05@2-3'	1/6/2025	2-3	1.89	44.6	<0.200	<0.30	3.63	5.68	4.45	<0.260	0.0283	15.9
BG06@0-1'	1/6/2025	0-1	2.66	50.4	0.227	<0.30	5.61	6.72	3.34	<0.260	0.0426	16.9
BG06@1-2'	1/6/2025	1-2	1.98	76.3	<0.200	<0.30	5.21	7.24	4.90	<0.260	0.0278	20.1
BG06@2-3'	1/6/2025	2-3	3.29	107	0.264	<0.30	5.64	9.38	6.73	<0.260	0.0509	24.6
BG06@3-4'	1/6/2025	3-4	5.51	145	0.380	<0.30	5.19	8.38	7.11	<0.260	0.0531	25.5
Maximum Background Concentration X 1.25			6.89	181	0.475	-	-	-	-	0.391	-	-

TABLE 5
SUMMARY OF METALS IN SOIL CHEMISTRY DATA
NOBLE ENERGY, INC. - 100322
BRUNTZ G16-23 FLOWLINE, WELD COUNTY, COLORADO
REM #32833

Sample ID	Sample Date	Depth (ft. bgs)	Arsenic (mg/kg)	Barium (mg/kg)	Cadmium (mg/kg)	Chromium (VI) ^[1] (mg/kg)	Copper (mg/kg)	Lead (mg/kg)	Nickel (mg/kg)	Selenium (mg/kg)	Silver (mg/kg)	Zinc (mg/kg)
ECMC Table 915-1 Limits (Residential SSL)			0.68	15,000	71	0.3	3,100	400	1,500	390	390	23,000
ECMC Table 915-1 Limits (Protection of Groundwater SSL)			0.29	82	0.38	0.00067	46	14	26	0.26	0.8	370

Notes:

1. Compound falls within ECMC Table 915-1 Footnote 9.

ECMC = Energy & Carbon Management Commission

(<) = Analytical result is less than the indicated laboratory reporting limit.

mg/kg = Milligrams per kilogram

ft. = Feet

bgs = Below ground surface

 = Material excavated and transported off site for disposal.

Bold faced values exceed the ECMC Table 915-1 limit(s), but are within 1.25x background concentrations.

Bold faced values exceed the ECMC Table 915-1 limit(s) and native background concentrations.

Red & blue highlighted soil analytical values indicate an exceedance of the referenced soil screening level (SSL).

TABLE 6
SUMMARY OF GROUNDWATER ORGANIC CHEMISTRY DATA
NOBLE ENERGY, INC. - 100322
BRUNTZ G16-23 FLOWLINE , WELD COUNTY, COLORADO
REM # 32833

Sample ID	Sample Date	Benzene (µg/L)	Toluene (µg/L)	Ethyl-Benzene (µg/L)	Xylenes (µg/L)	Naphthalene (µg/L)	1,2,4- Trimethyl- Benzene (µg/L)	1,3,5- Trimethyl- Benzene (µg/L)	Depth to Groundwater Below Ground Surface (ft)
ECMC Table 915-1 Limits		5.0	560	700	1,400	140	67	67	
GW01	03/27/2025	<1.0	<1.0	<1.0	<2.0	<1.0	<1.0	<1.0	~4

Notes:

1. **Bold** values exceed the ECMC limit(s)
2. Blue highlighted groundwater analytical values indicate a regulatory exceedance

NA = Not Analyzed

ECMC = Energy & Carbon Management Commission

(<) = Analytical result is less than the indicated laboratory reporting limit.

µg/L = micrograms per liter

ft. = Feet

TABLE 7
SUMMARY OF INORGANIC GROUNDWATER CHEMISTRY DATA
NOBLE ENERGY, INC. - 100322
BRUNTZ G16-23 FLOWLINE , WELD COUNTY, COLORADO
REM # 32833

Sample ID	Sample Date	Total Dissolved Solids (mg/L)	Chloride Ion (mg/L)	Sulfate Ion (mg/L)
ECMC Table 915-1 Limits		<1.25 x local background	250 or <1.25 x local background	250 or <1.25 x local background
GW01	03/27/2025	1,420	241	364

Notes:

1. **Bold** values exceed the ECMC limit(s)
 2. Blue highlighted groundwater analytical values indicate a regulatory exceedance
- ECMC = Energy & Carbon Management Commission
mg/L = Milligrams per liter



CLIENT: Noble		SITE NAME: Bruntz G16-23 Flowline					DATE: 3/26/2025	REM. PROJECT #:	WEATHER: Sunny 60	
SITE DIRECTIONS: E CR 44 N CR 43, 0.4N, 0.2 E into site							JOB#:			
LEGALS AND LAT/LONG:							TASMAN PERSONNEL: JM			
SOIL TYPES: Poorly Graded Sand - SP							SURFACE GRADIENT: North			
SOIL SAMPLING							FACILITY INFRASTRUCTURE			
Date/Time	Soil Sample ID	PID (ppm)	Visual	Olfactory	Photo?	Grab or Lab Sample?	EQUIPMENT		Quantity	
							Above Ground Storage Tank (AST)			
03-26-2025 12:29	SS06-A@6'	1.3	No Staining	No Odor	Yes	Lab	Buried or Partially Buried Vessel			
03-26-2025 12:31	SS07-A@4'	2.5	No Staining	No Odor	Yes	Lab	Separator			
03-26-2025 12:33	SS08-A@4'	0.3	No Staining	No Odor	Yes	Lab	Emission Control Device (ECD)			
03-26-2025 12:35	SS09-A@4'	0.8	No Staining	No Odor	Yes	Lab	Dump Line			
03-26-2025 12:37	SS10-A@4'	0.5	No Staining	No Odor	Yes	Lab	Wellhead			
03-26-2025 12:39	SS11-A@1'	0.5	No Staining	No Odor	Yes	Lab	Flowline			
03-26-2025 14:27	SS06-B@4'	0.6	No Staining	No Odor	Yes	Lab	Other:			
03-26-2025 14:29	SS07-B@1'	0.0	No Staining	No Odor	Yes	Lab	Soil Loads Removed			
03-27-2025 10:00	SS06-D@4'	0.3	No Staining	No Odor	Yes	Lab	IMPACTED SOIL IDENTIFIED?			
03-27-2025 10:02	SS07-D@1'	0.3	No Staining	No Odor	Yes	Lab	ESTIMATED VOLUME OF IMPACTS:			
03-27-2025 10:04	SS08-D@1'	0.3	No Staining	No Odor	Yes	Lab	Date	Number	CY	
03-27-2025 10:06	SS09-D@1'	0.2	No Staining	No Odor	Yes	Lab	3/26/2025	5	50	
							3/27/2025	6	60	
							Total Removed		11 110	
							Disposal Facility: WM - Ault			
							Groundwater Recovery			
							DATE GW ENCOUNTERED:		DEPTH:	
							GROUNDWATER IN CONTACT WITH IMPACTED SOIL?			
							LNAPL OR SHEEN OBSERVED ON GW?			
GROUNDWATER SAMPLING							Date	BBLs		
Date/Time	Groundwater Sample ID	Depth Collected	Turbid?	Sheen?	Odor?	Photo?				
3/27/2025 12:05	GW01	4	Medium Turbid	None	None	Yes				
							Total Removed		0	
							Disposal Facility:			



Photographic Log

					
Equipment ID: SS06-A@6'		Equipment Type:	Equipment ID: SS07-A@4'		Equipment Type:
Material:	Volume:	Contents:	Material:	Volume:	Contents:
Notes/Conditions:			Notes/Conditions:		



Photographic Log



Equipment ID: SS08-A@4'		Equipment Type:	
Material:	Volume:	Contents:	
Notes/Conditions:			

Equipment ID: SS09-A@4'		Equipment Type:	
Material:	Volume:	Contents:	
Notes/Conditions: OPERATOR PUSH DIRT OVER SIDE WALL SAMPLE			



Photographic Log



Equipment ID: SS10-A@4' AND SS11-A@1'			Equipment Type:		
Material:	Volume:	Contents:			
Notes/Conditions:					
Equipment ID: SS06-B@4' AND SS07-B@1'			Equipment Type:		
Material:	Volume:	Contents:			
Notes/Conditions:					



Photographic Log



Equipment ID: Excavation E		Equipment Type:	
Material:	Volume:	Contents:	
Notes/Conditions:			

Equipment ID: Excavation E		Equipment Type:	
Material:	Volume:	Contents:	
Notes/Conditions:			