



Company ANADARKO PETROLEUM CORP
Well GRANER 1-23A
Field WATTENBERG
County WELD **State** CO
Location: API #: 05-123-21501
 SEC 23 TWP 2N RGE 6TW
 NE/NE
 PERM
Other Services
 Elevation 4910'
 Log Measured From KB 12' Above Perm. Datum
 Drilling Measured From KB
 K.B. 4922'
 D.F. 4921'
 G.L. 4910'

Date of Service	APR 3RD, 2025			
Run Number	ONE			
Depth Driller or P8TD	8063'			
Depth Logger	4500'			
Bottom Log Interval	4496'			
Top Log Interval	SURFACE			
Open Hole Size	7.875"			
Type Fluid	WATER			
Fluid Level	SURFACE			
Fluid Density	8.3#			
Max. Recorded Temperature	133° F			
Max. Wellhead Pressure	ZERO			
Wellhead Connection	5K FLANGE			
Estimated Cement Top	SEE LOG			
Unit Number	5074			
Wireline Size	9/32"			
Location	PLATTEVILLE, CO			
Recorded By	GREG JACKSON			
Witnessed By	VICTOR IDELFONSO			
	Size	WFt	Top	Bottom
Tubing Record				
Surface Casing	8-5/8	24#	SURFACE	664'
Production Casing	4-1/2	11.6#	SURFACE	8047'
Liner Record				

<<< Fold Here >>>

All interpretations are opinions based on inferences from electrical or other measurements and Pioneer Wireline Services, LLC cannot and does not guarantee the accuracy or correctness of any interpretation, and Pioneer Wireline Services, LLC will not be liable or responsible for any loss, costs, damages, or expenses incurred or sustained by anyone resulting from any interpretation made by any of our officers, agents or employees.

Comments

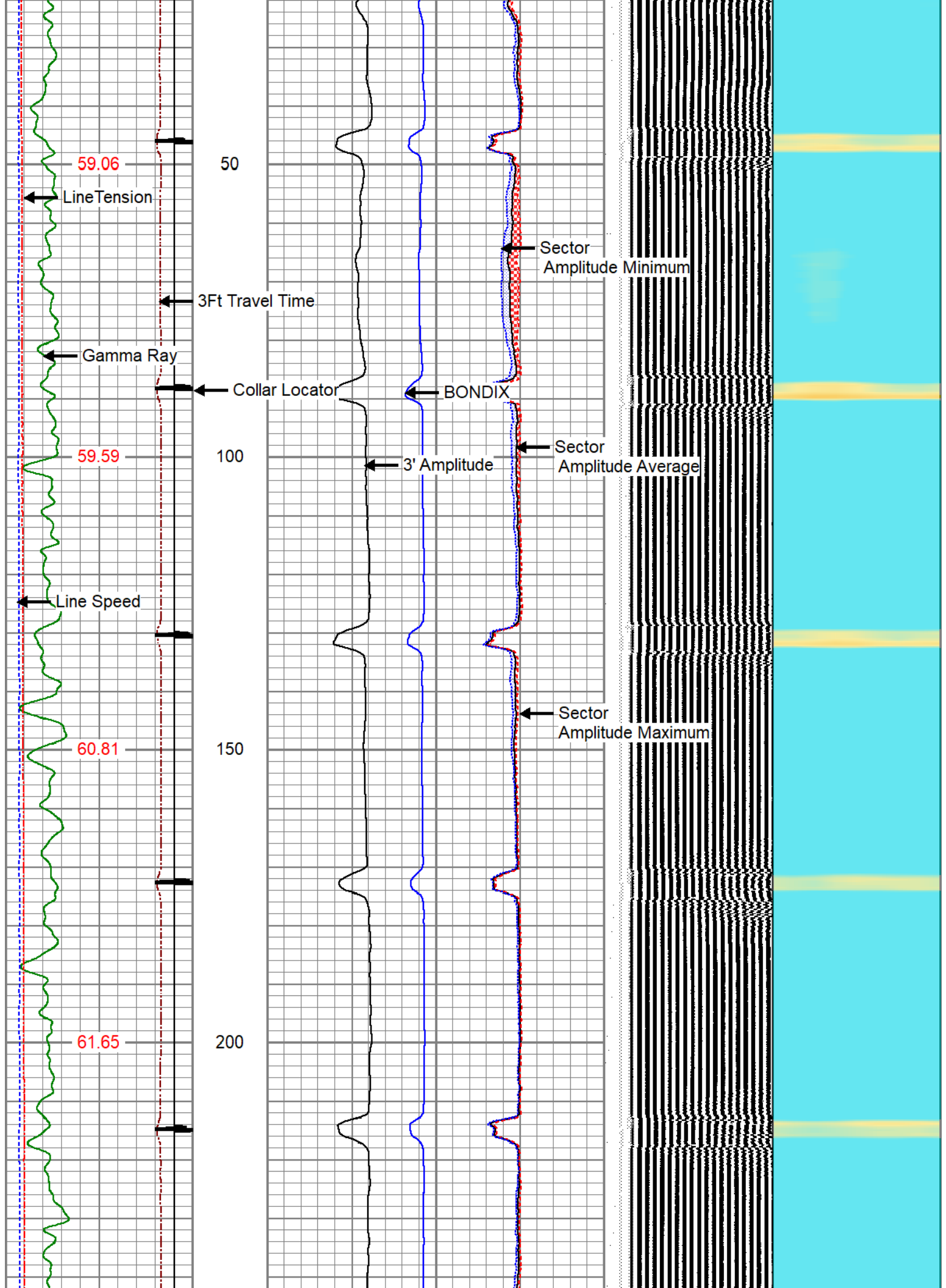
N/A DENOTES NOT AVAILABLE OR NON-APPLICABLE.
 LOG CORRELATED TO REPORTED DV TOOL DEPTH OF 5025'

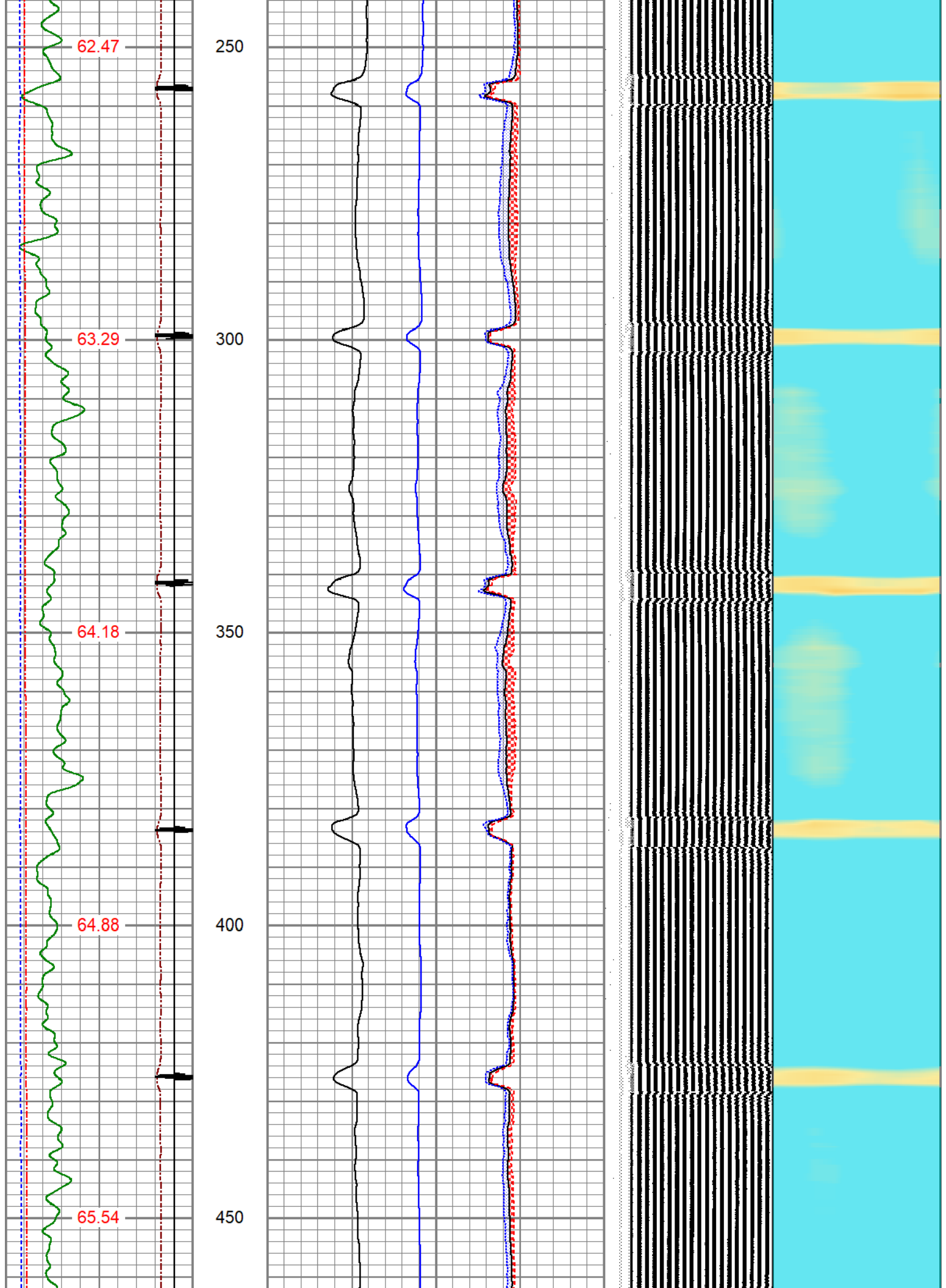
THANK YOU FOR USING PIONEER ENERGY SERVICES!

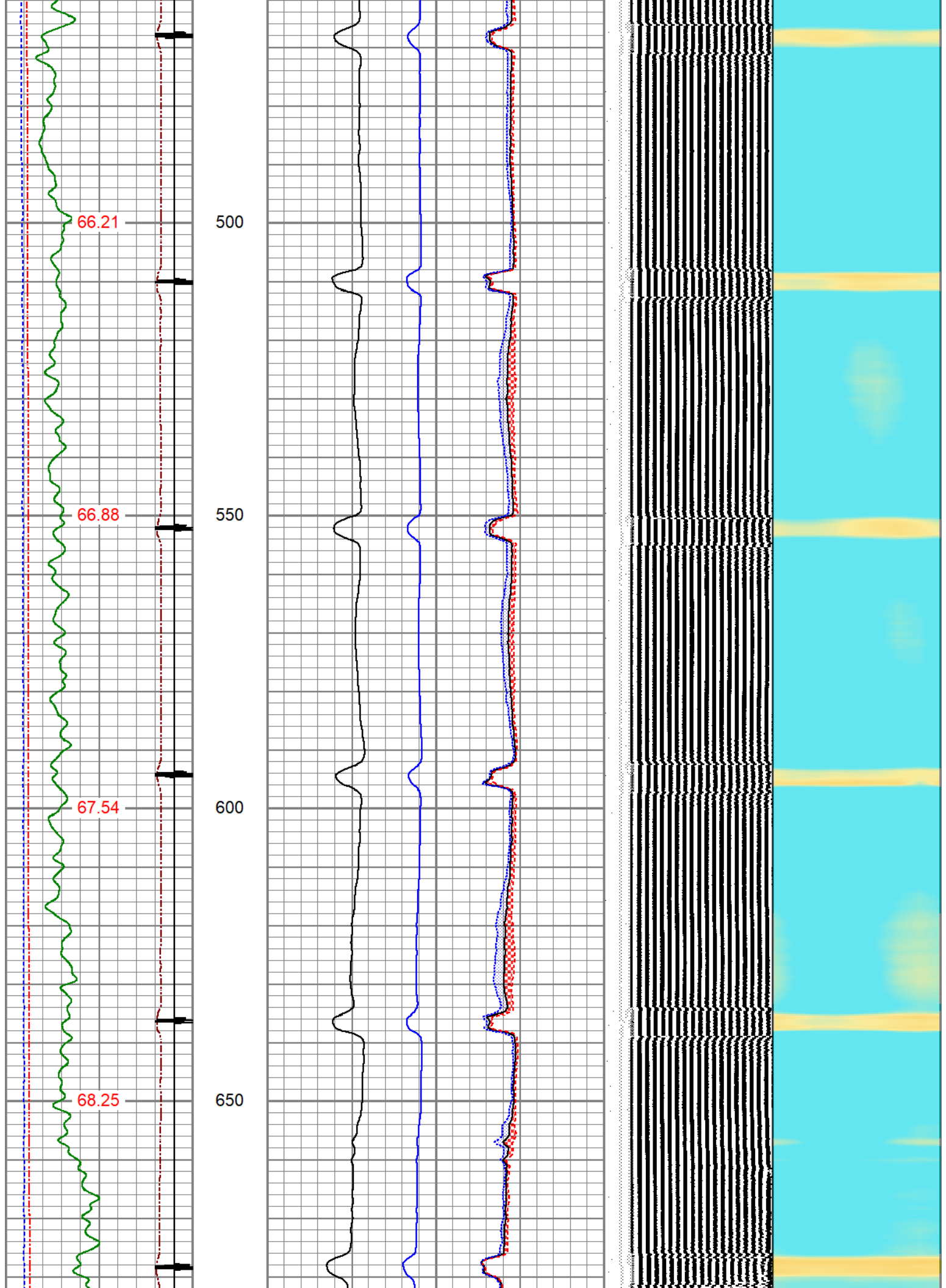
Your Pioneer Energy Services Crew Engineer: G. JACKSON Operator: M. LLAMAS Operator: B. MATCHETT Operator:	Tool Data - Services BOND GAMMA RAY/CCL	Serial Number
---	--	----------------------

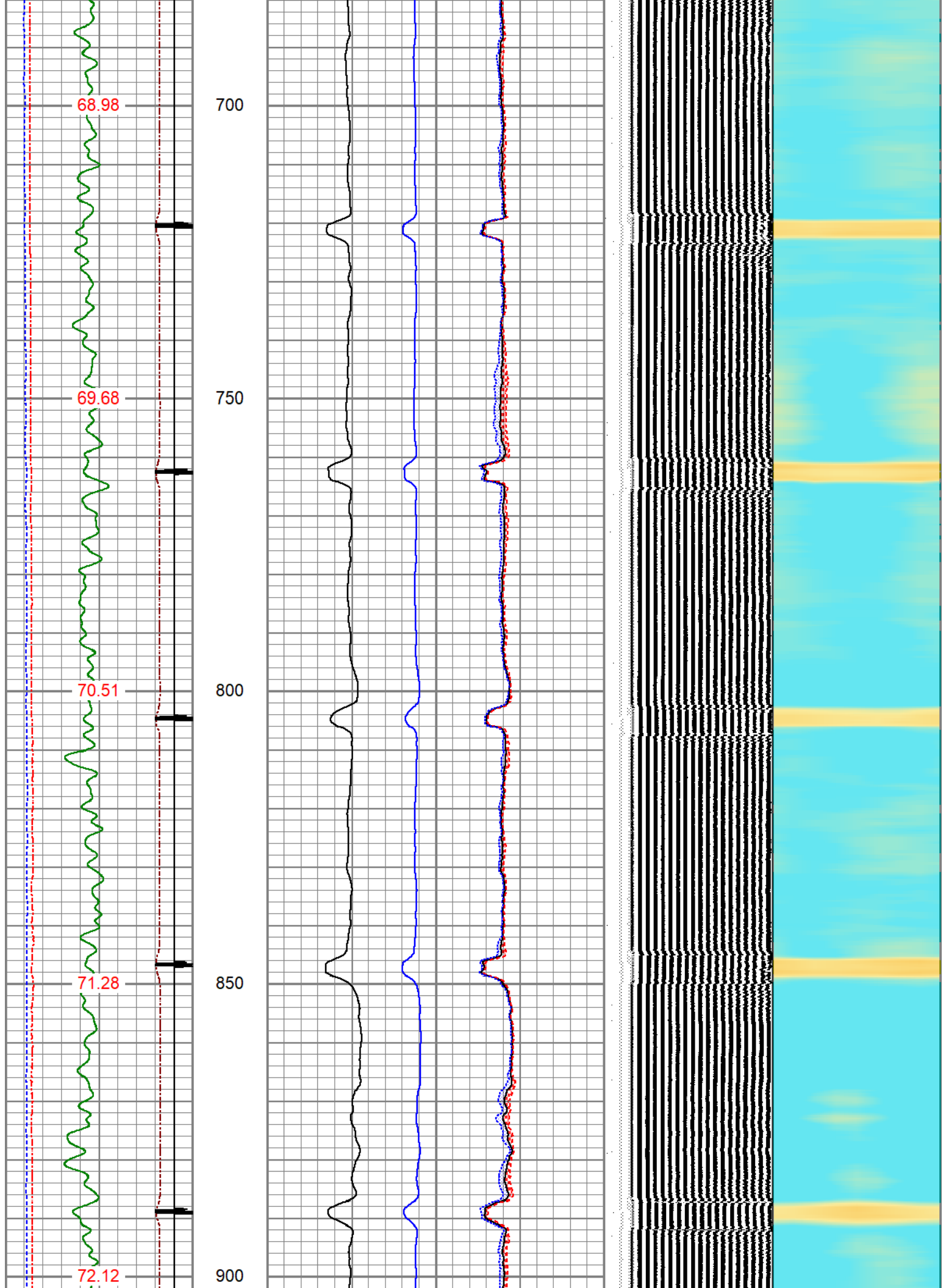
Sensor	Offset (ft)	Schematic	Description	Length (ft)	O.D. (in)	Weight (lb)
			Cable Head-Titan_144 1 7/16" Titan Cable Head	1.03	1.44	2.00
			Centralizer-275 Probe 2 3/4" Probe Adjustable Spring Centralizer	2.88	2.75	15.00
WVFS8	12.09		PROBE-RBT-DIGITAL-RBL-DC (FW1304-34) Probe 2 3/4" Radii Bond-Corrosion Package	8.75	2.75	100.00
WVFS7	12.09					
WVFS6	12.09					
WVFS5	12.09					
WVFS4	12.09					
WVFS3	12.09					
WVFS2	12.09					
WVFS1	12.09					
WVFCAL	12.09					
WV3FT	12.09					
WV5FT	11.09					
HEADVOLT	7.90					
			Centralizer-275 Probe 2 3/4" Probe Adjustable Spring Centralizer	2.88	2.75	15.00
CCL	4.20					
GCT_TEMP	3.41					
GR	2.83		PROBE-GR/CCL-DIGITAL-275 Probe GCT (140181) Probe 2 3/4" Gamma Ray/Temp/CCL	4.69	2.75	60.00
			Bullnose-PROBE Probe Go Pin Pressure Cap	0.33	1.38	1.00

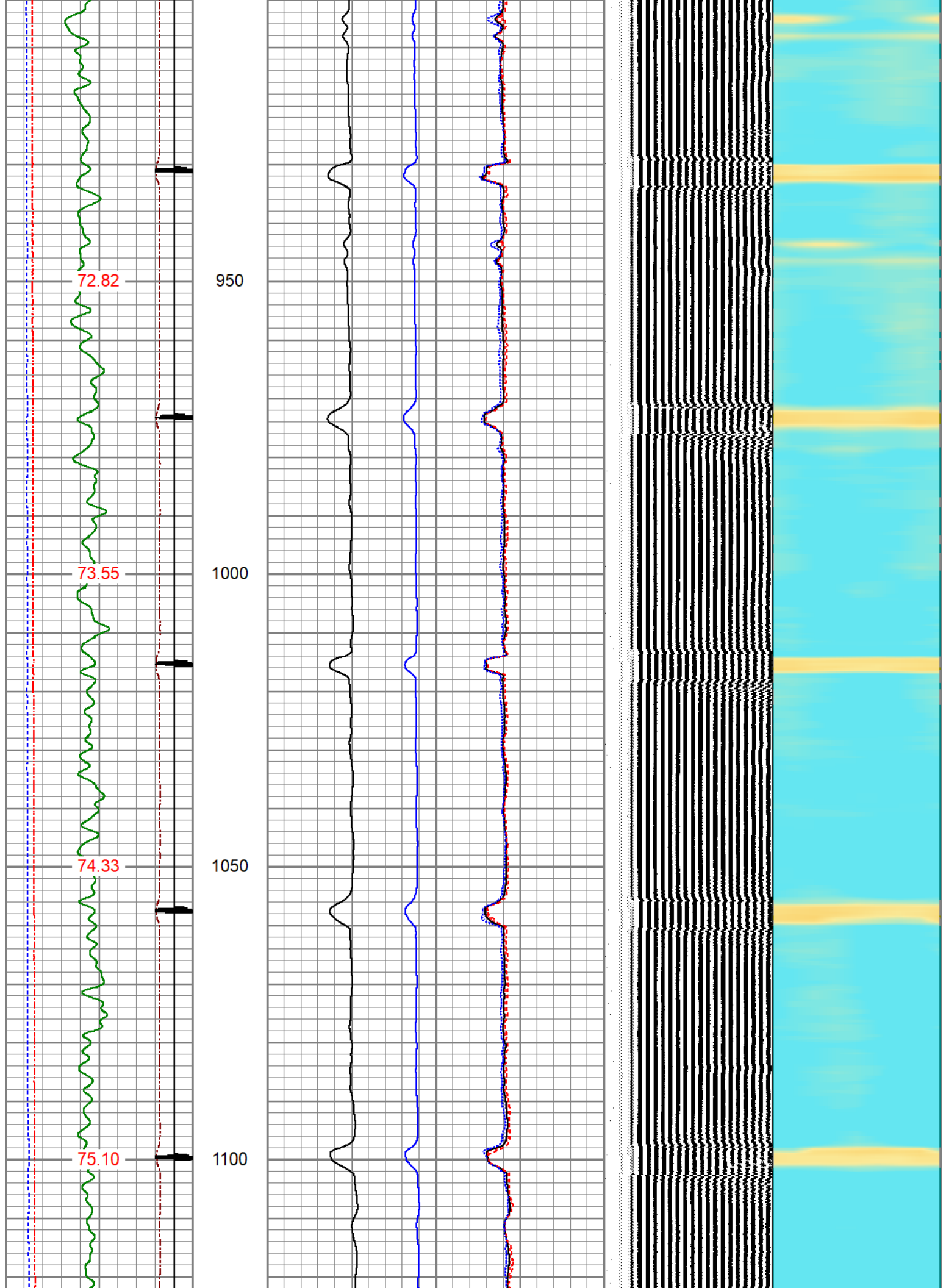
Dataset: oxy_graner 1-23a_rcbl_4500ft - 0ft_0psi_4-3-25.db: field/well/run1/pass3
 Total length: 20.56 ft
 Total weight: 193.00 lb
 O.D.: 2.75 in

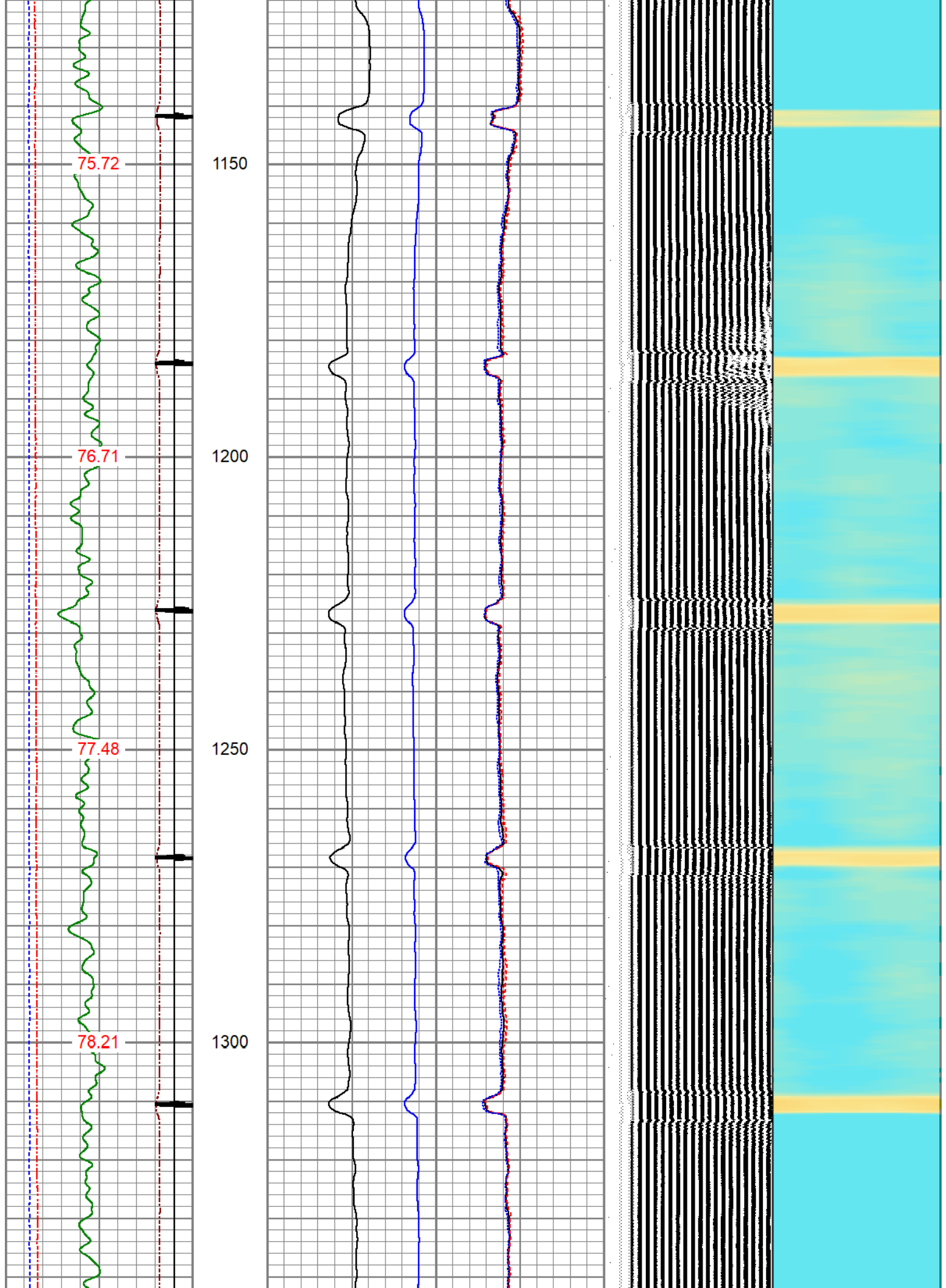


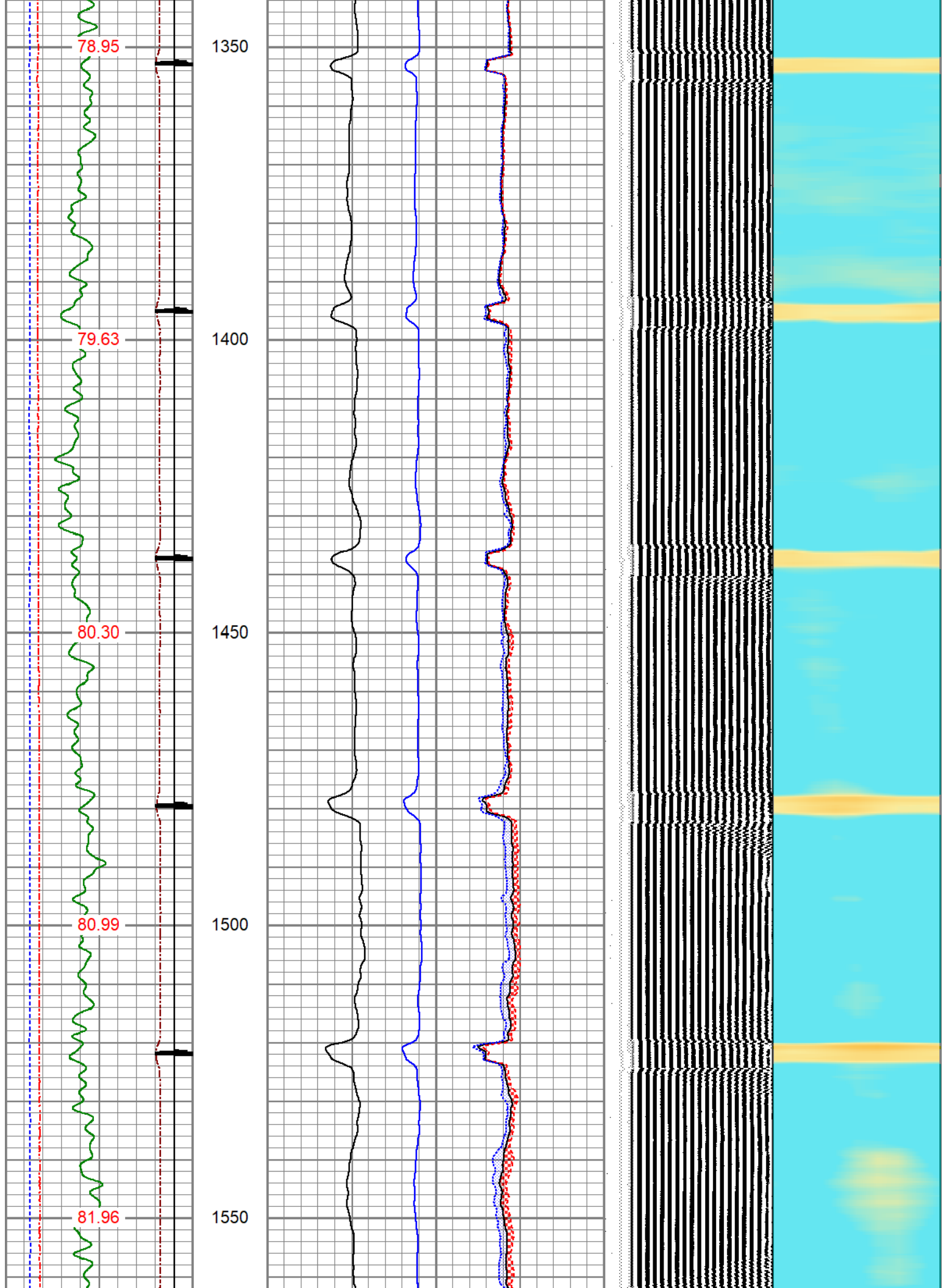


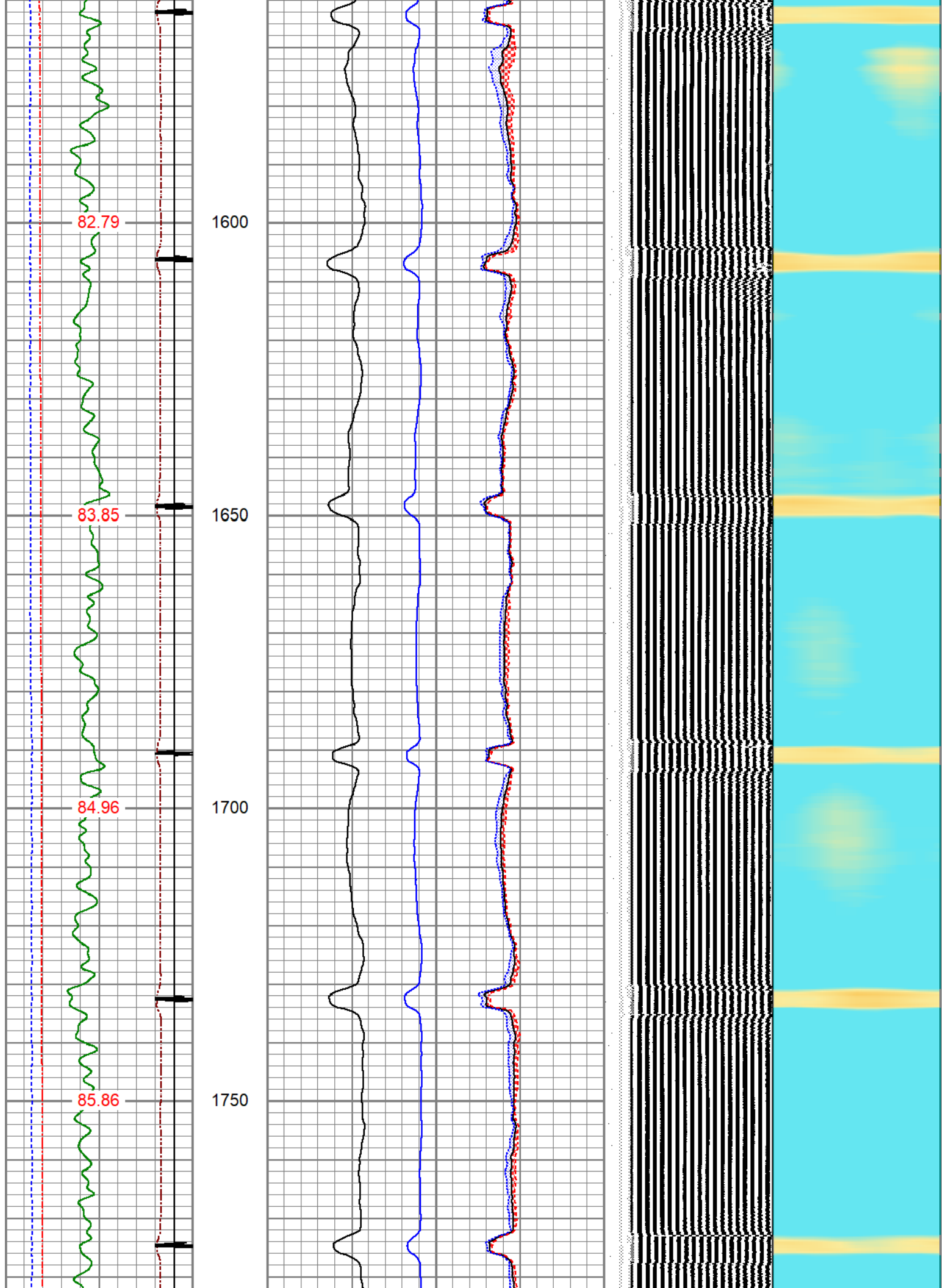


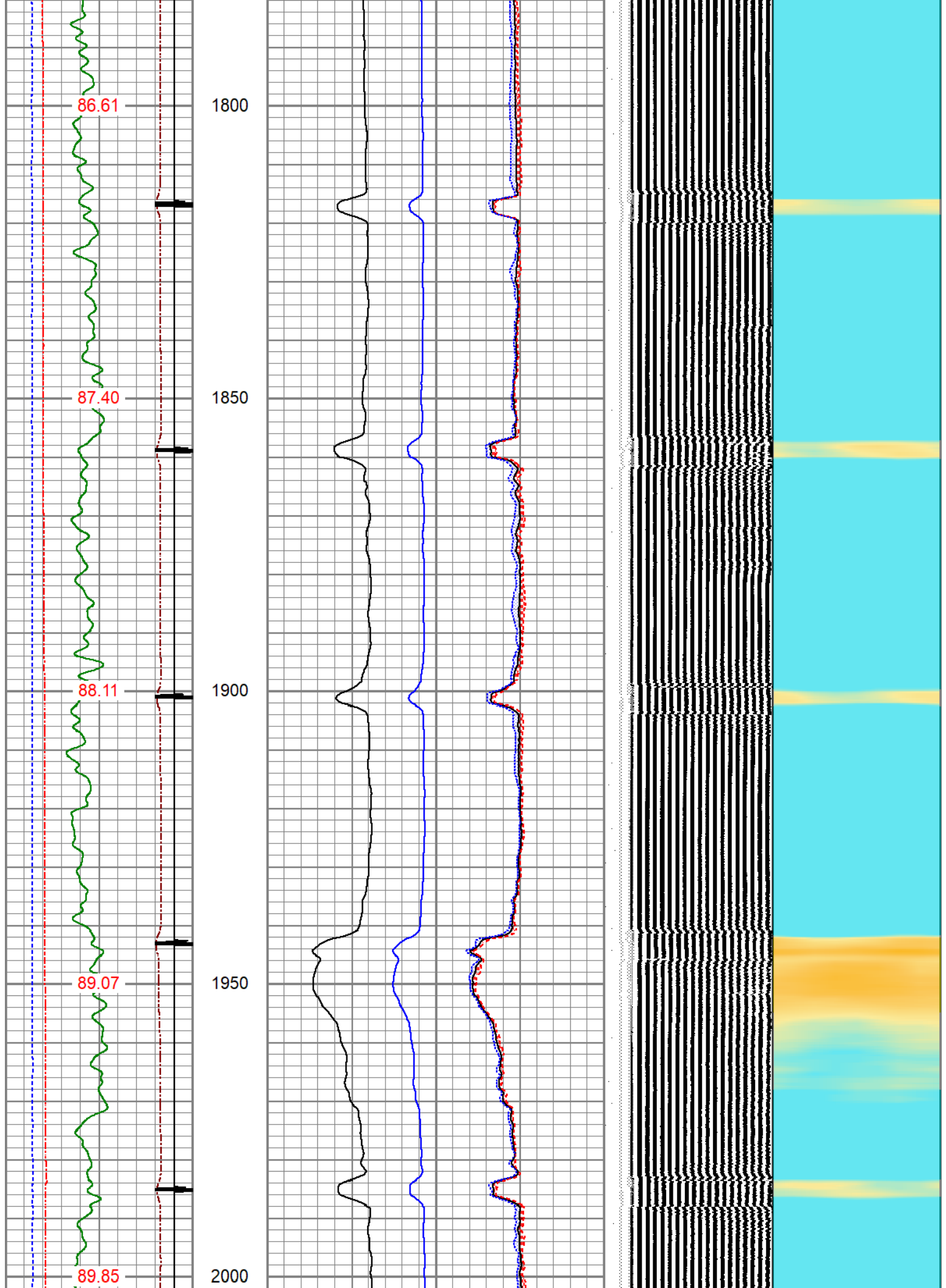


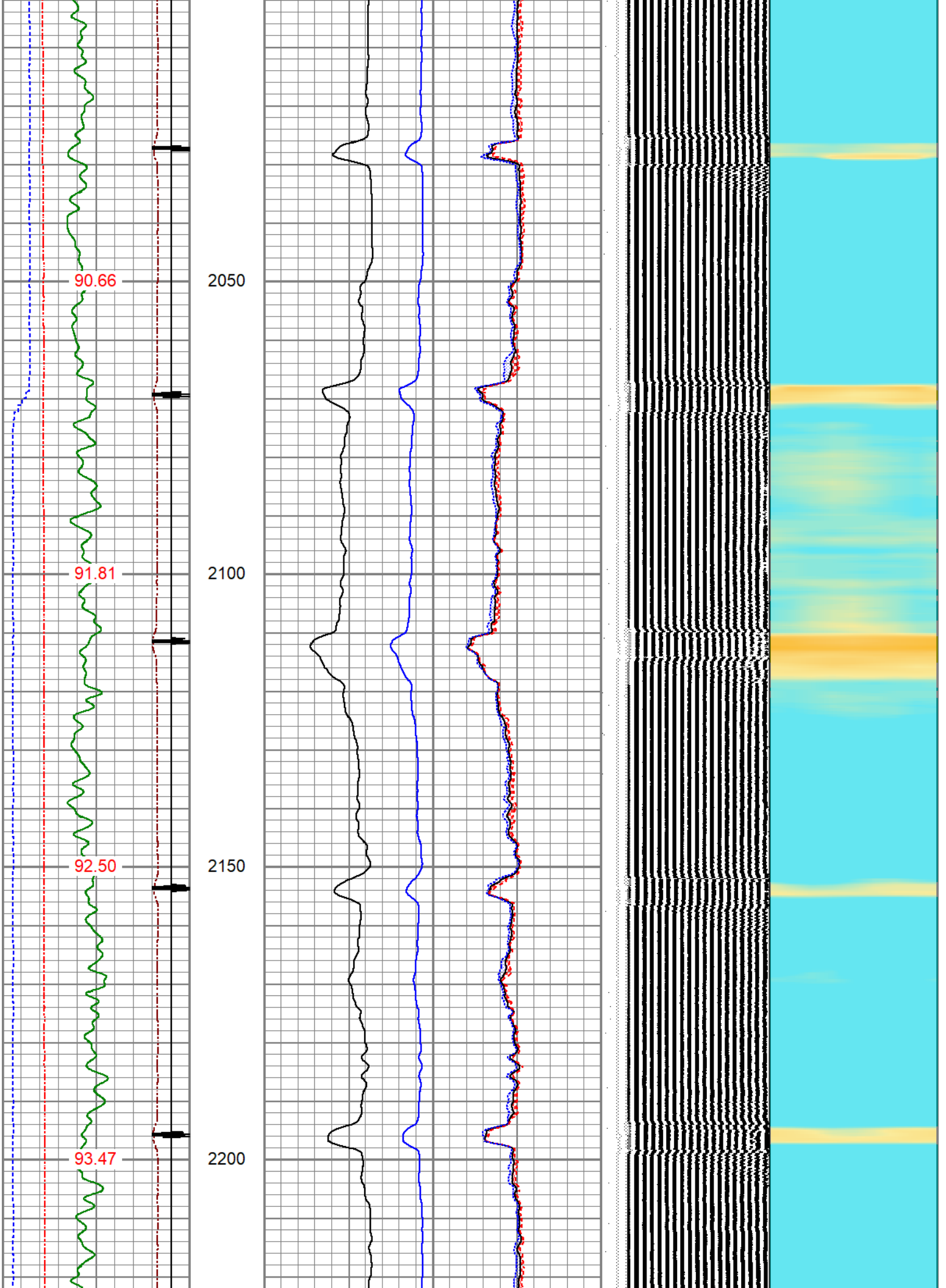


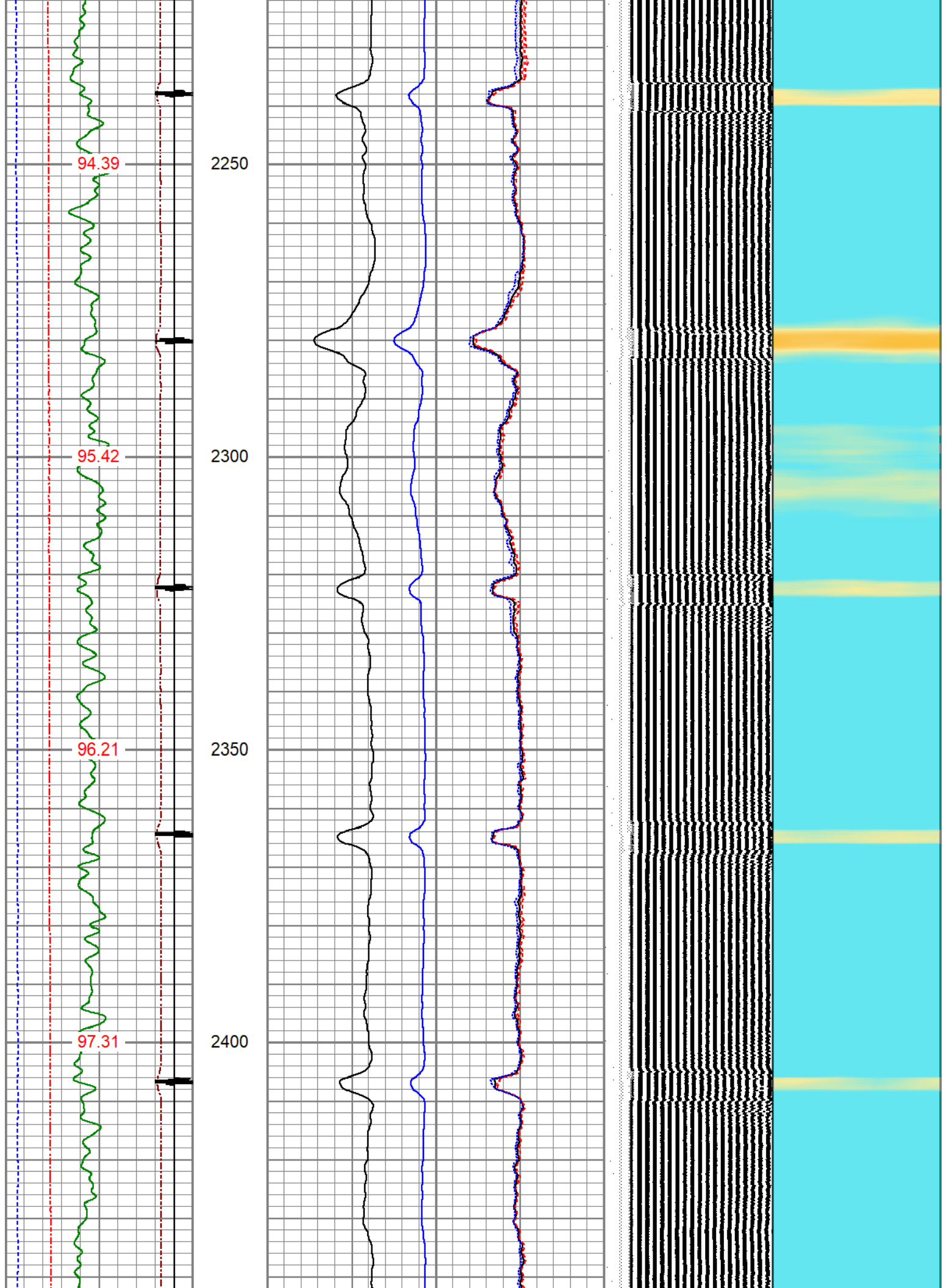


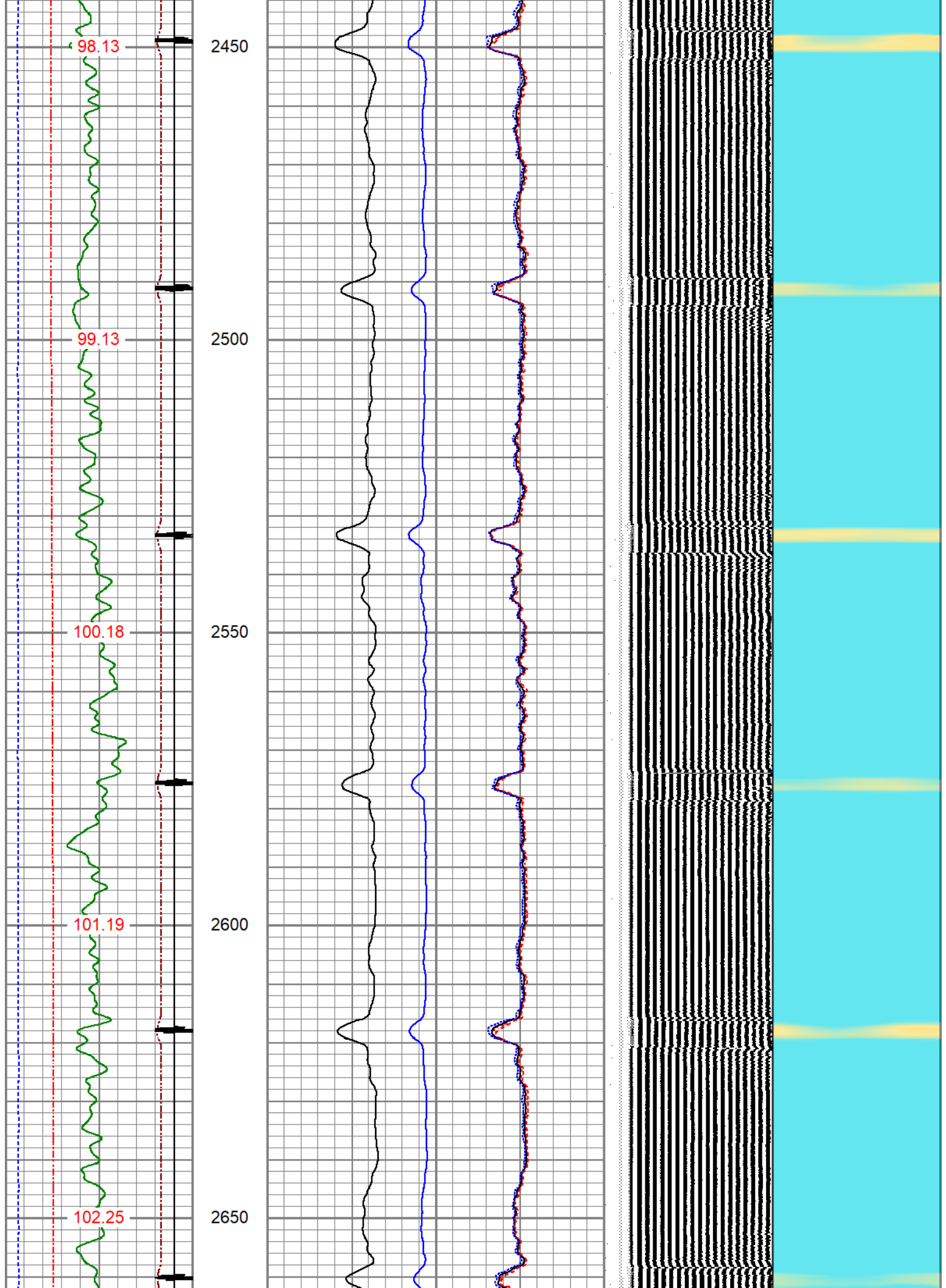


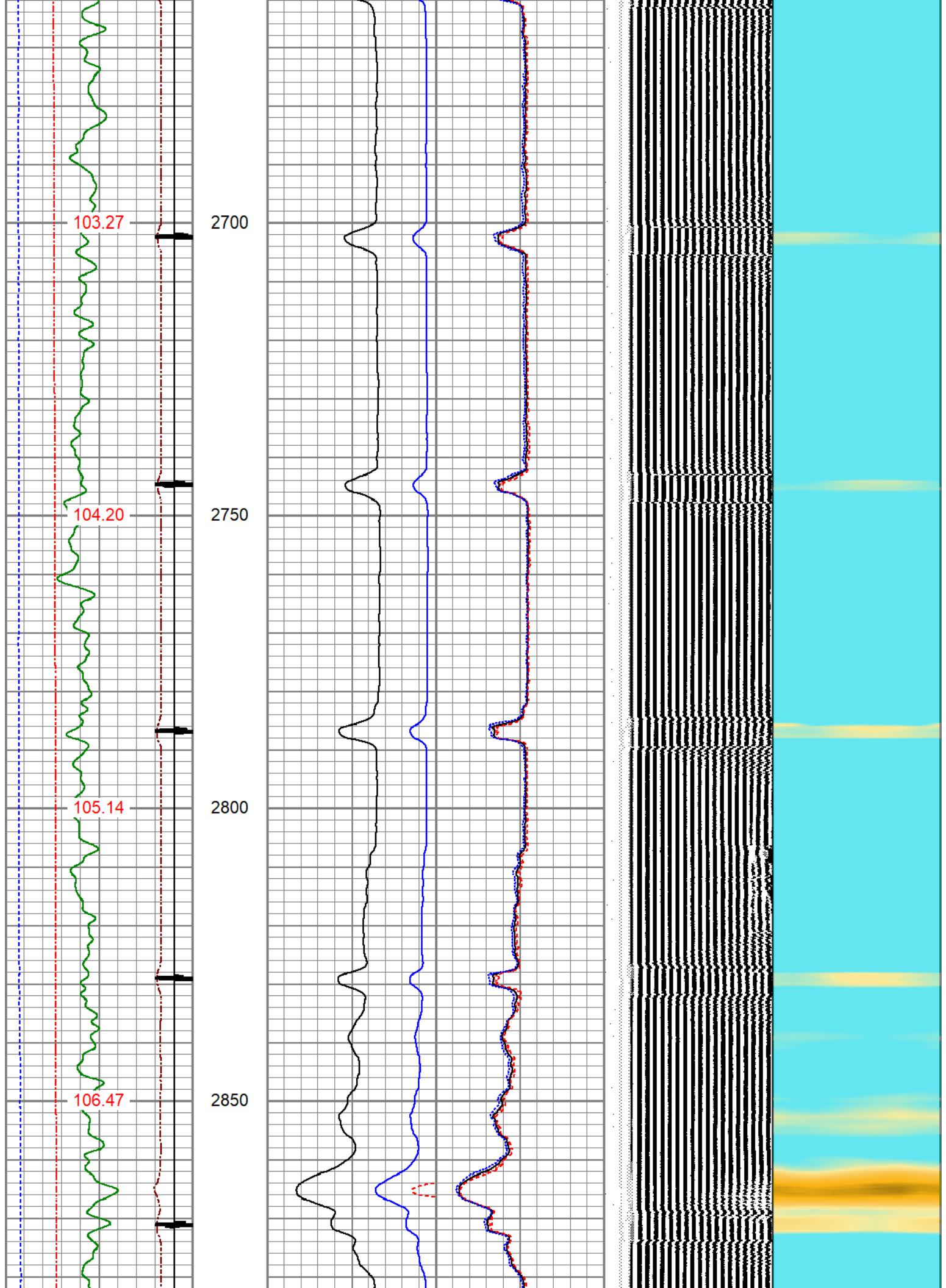


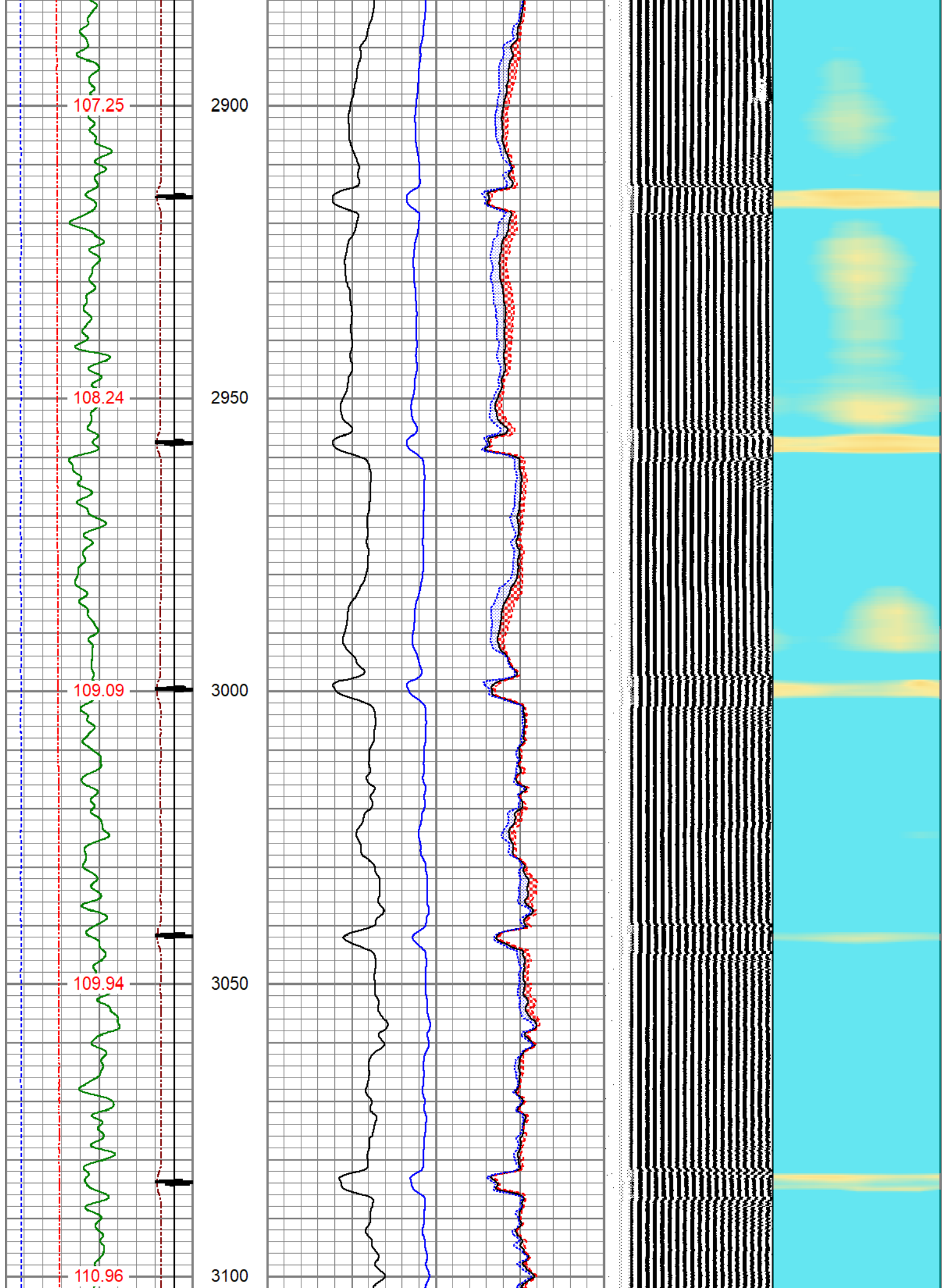


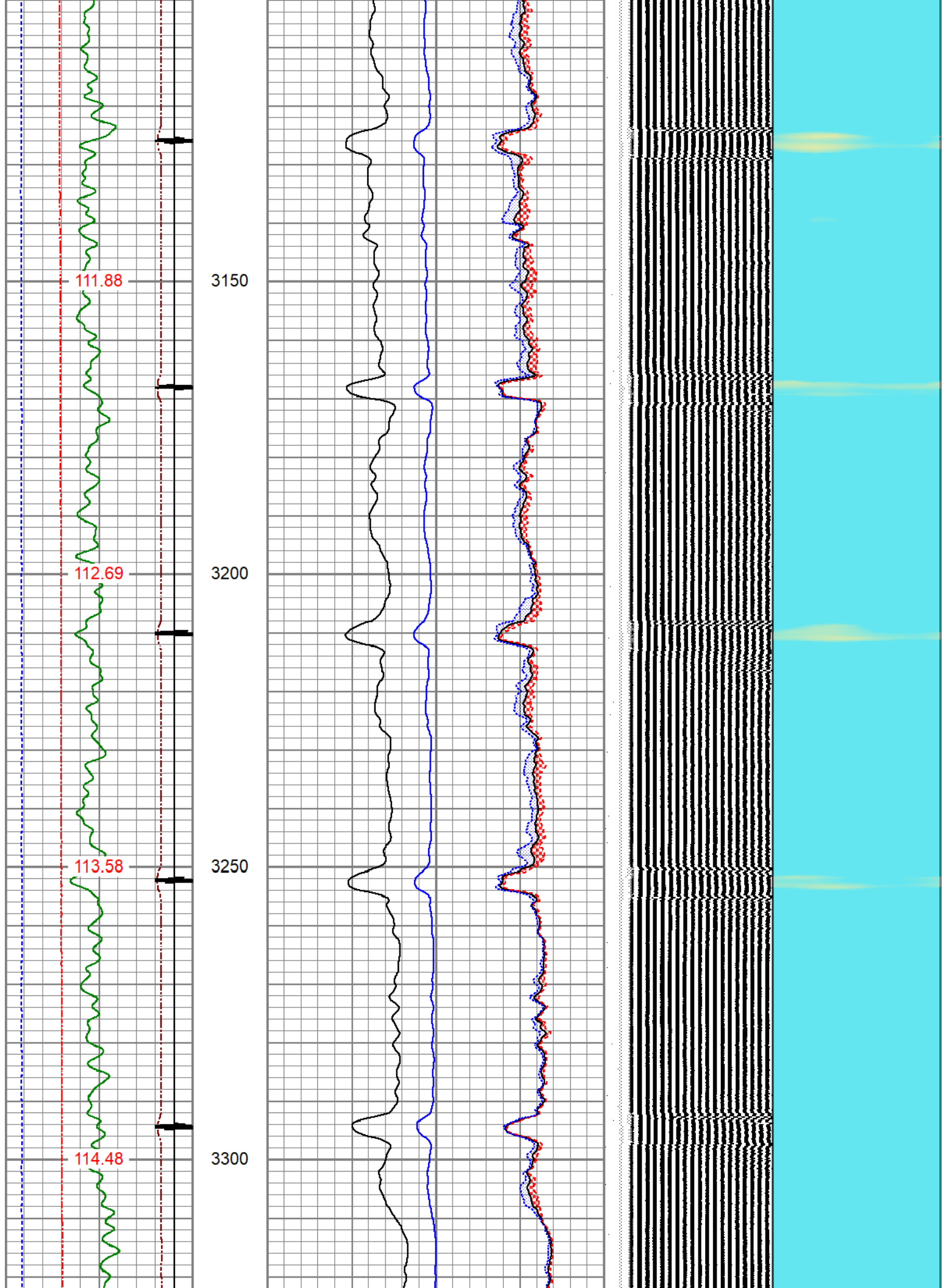


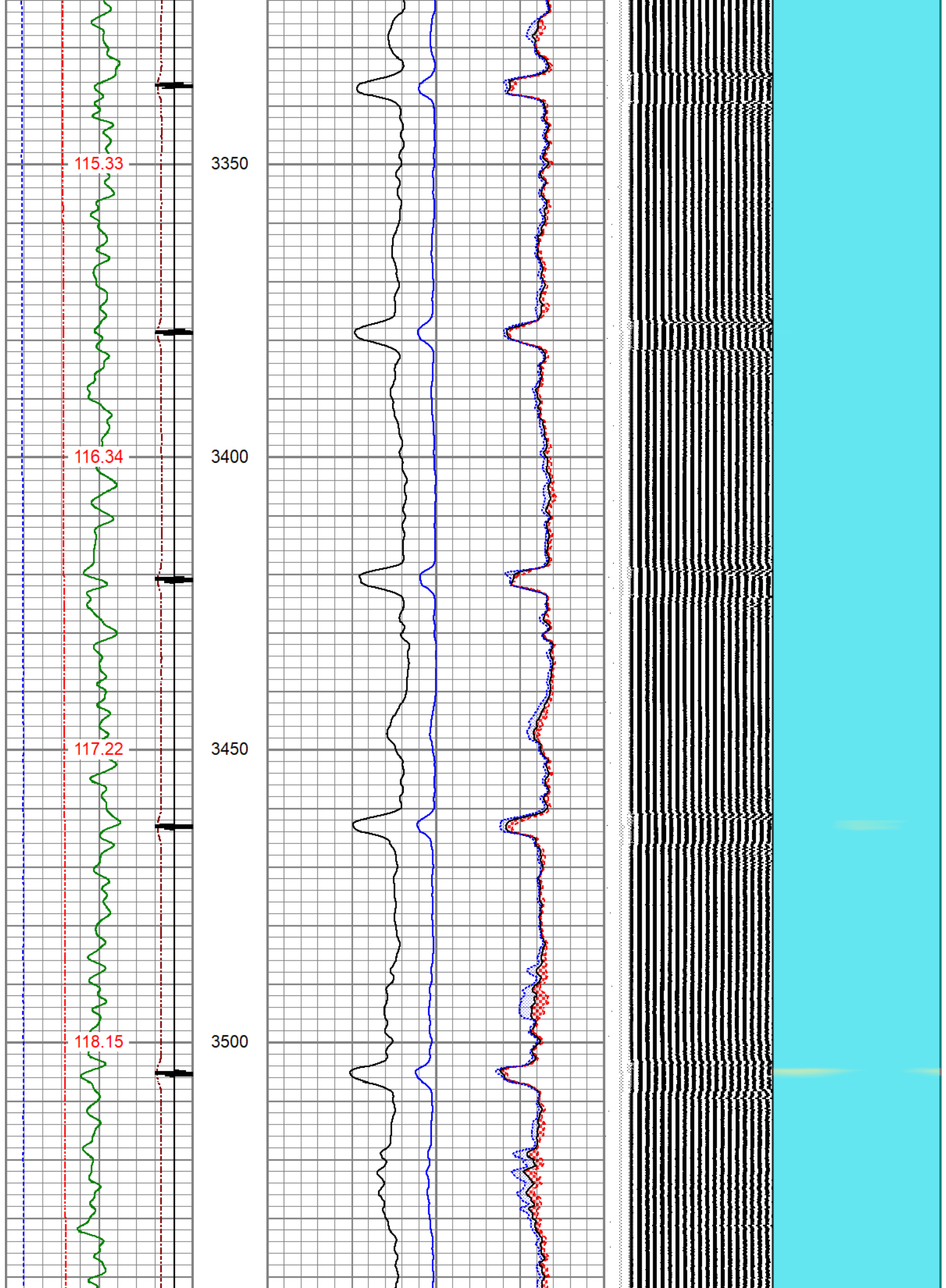


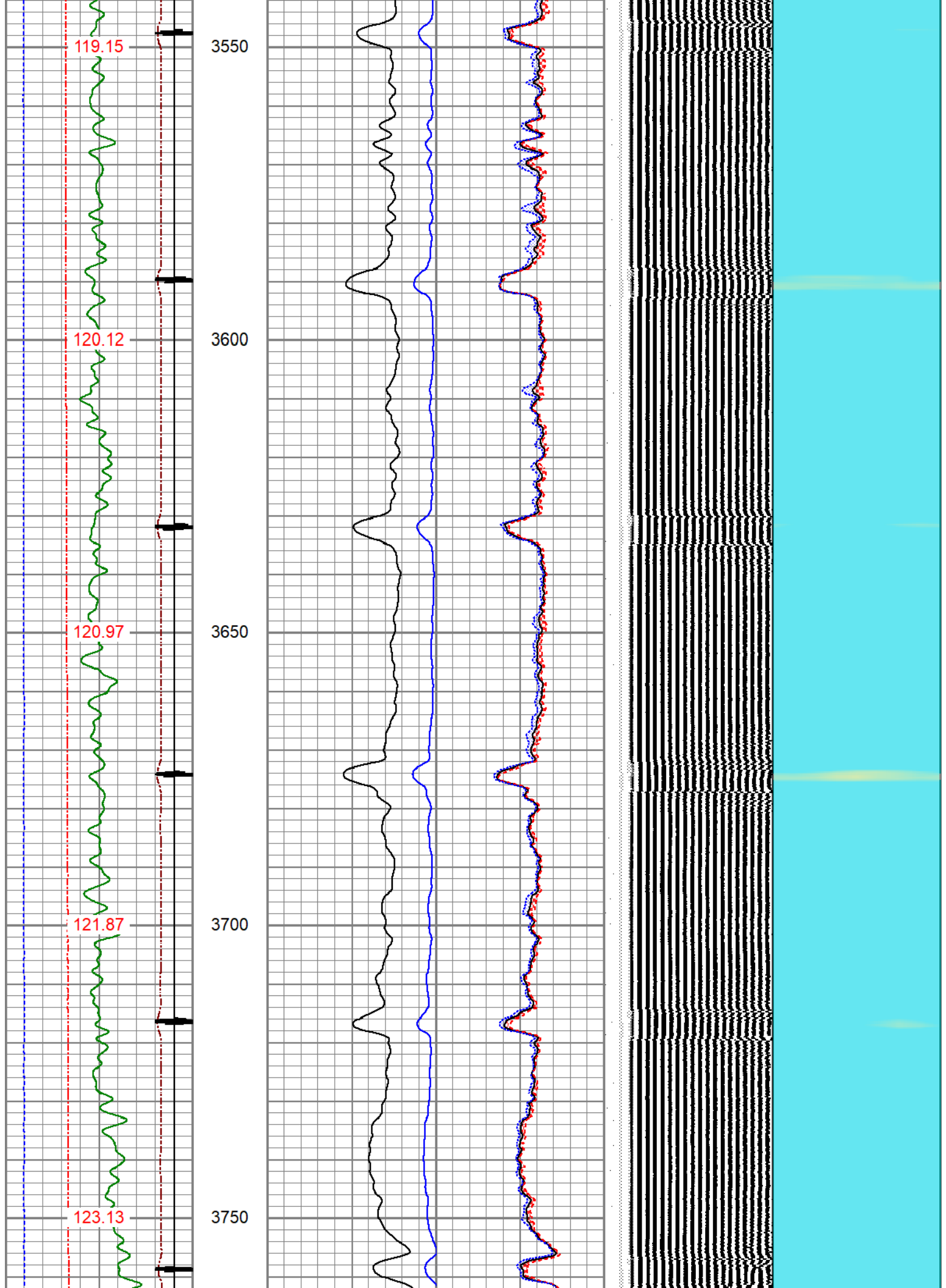


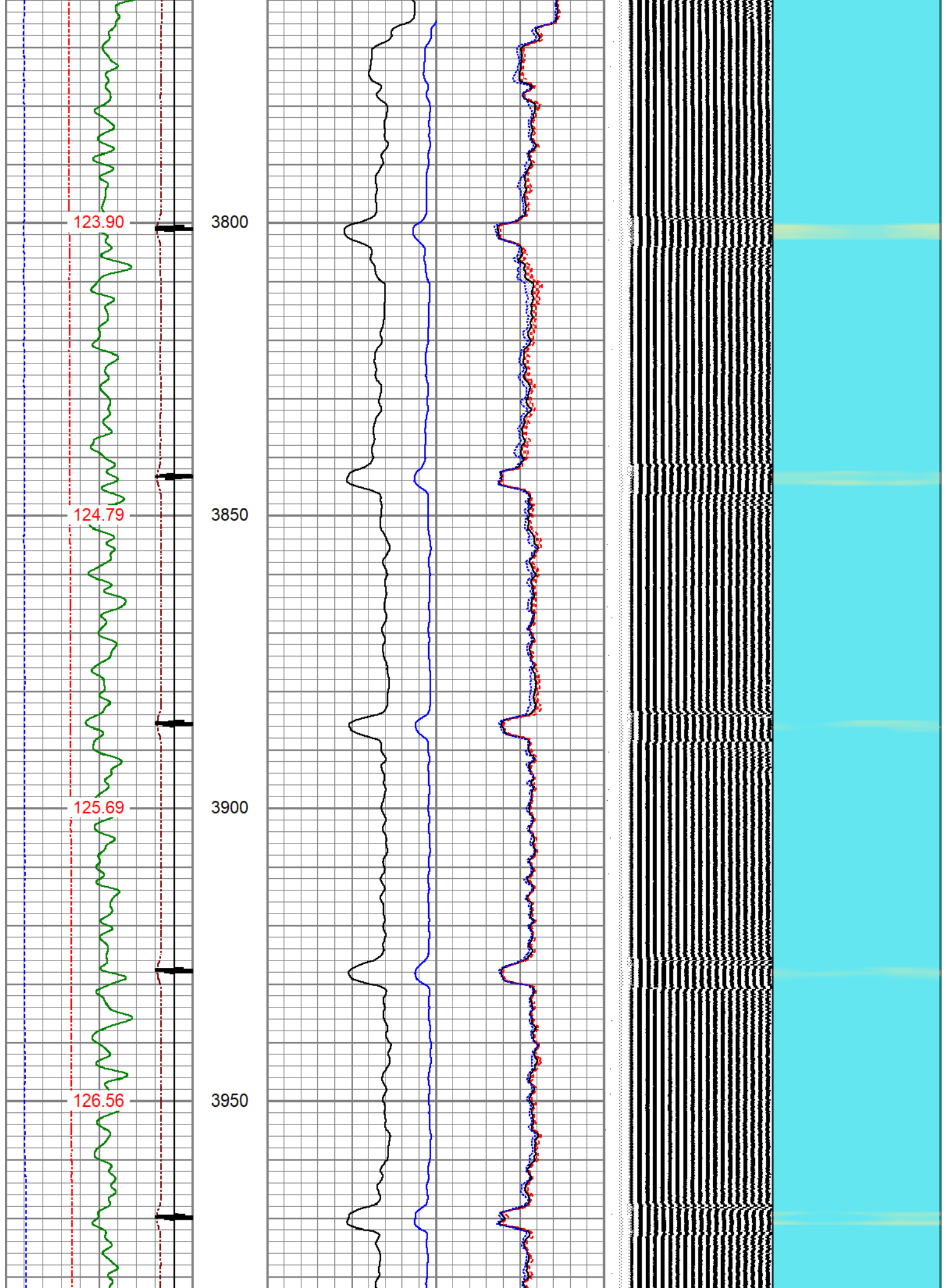


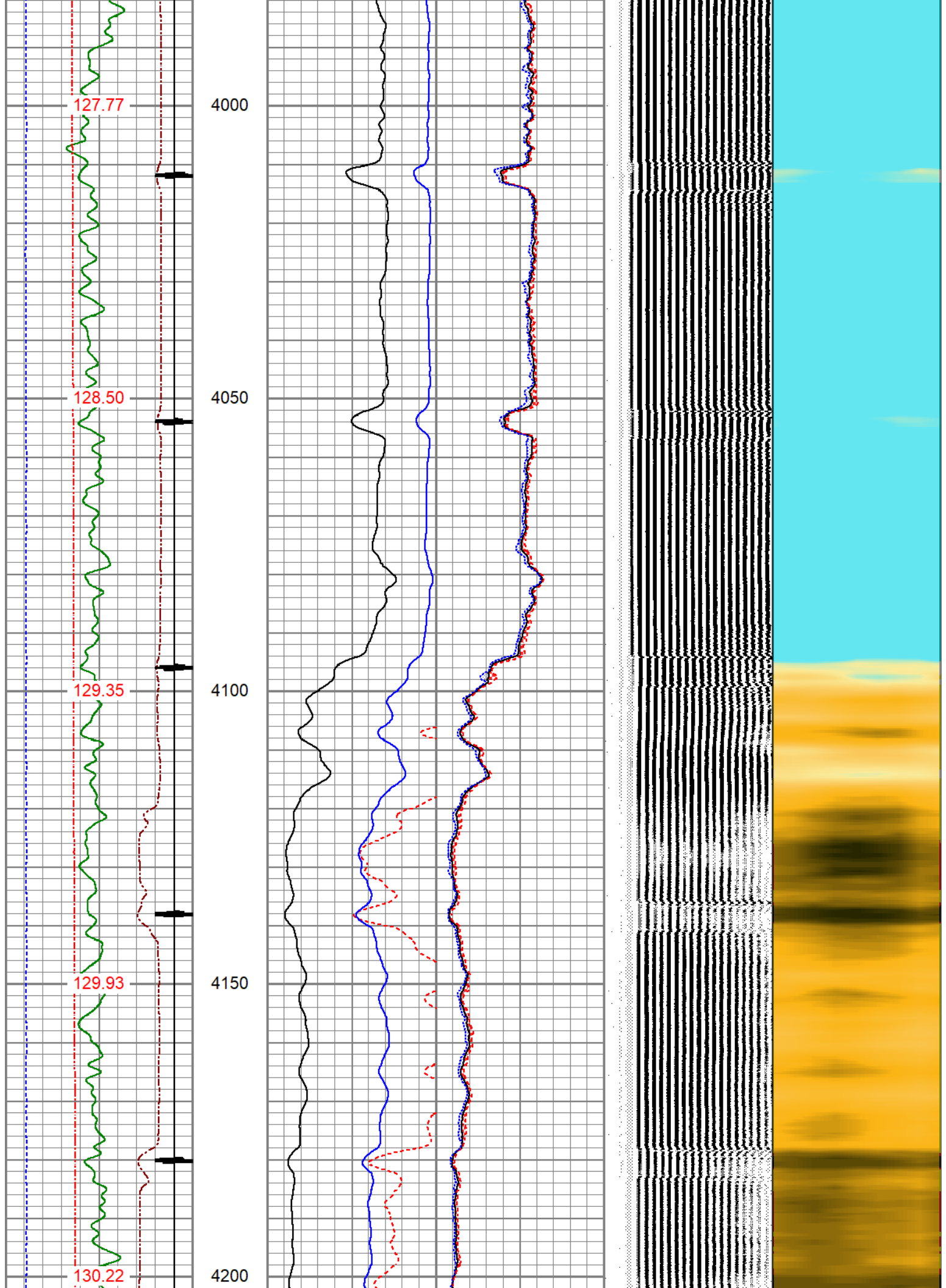


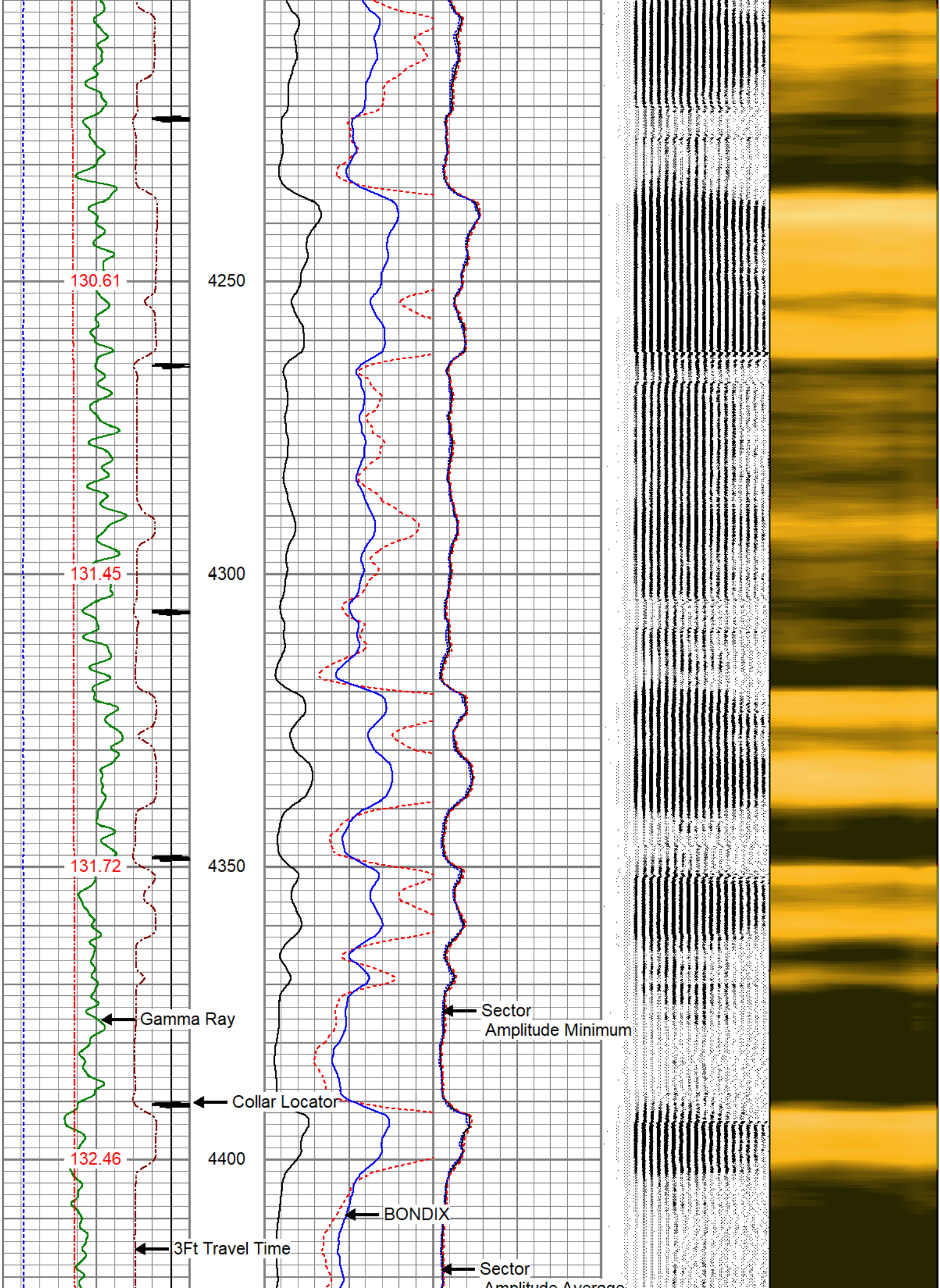


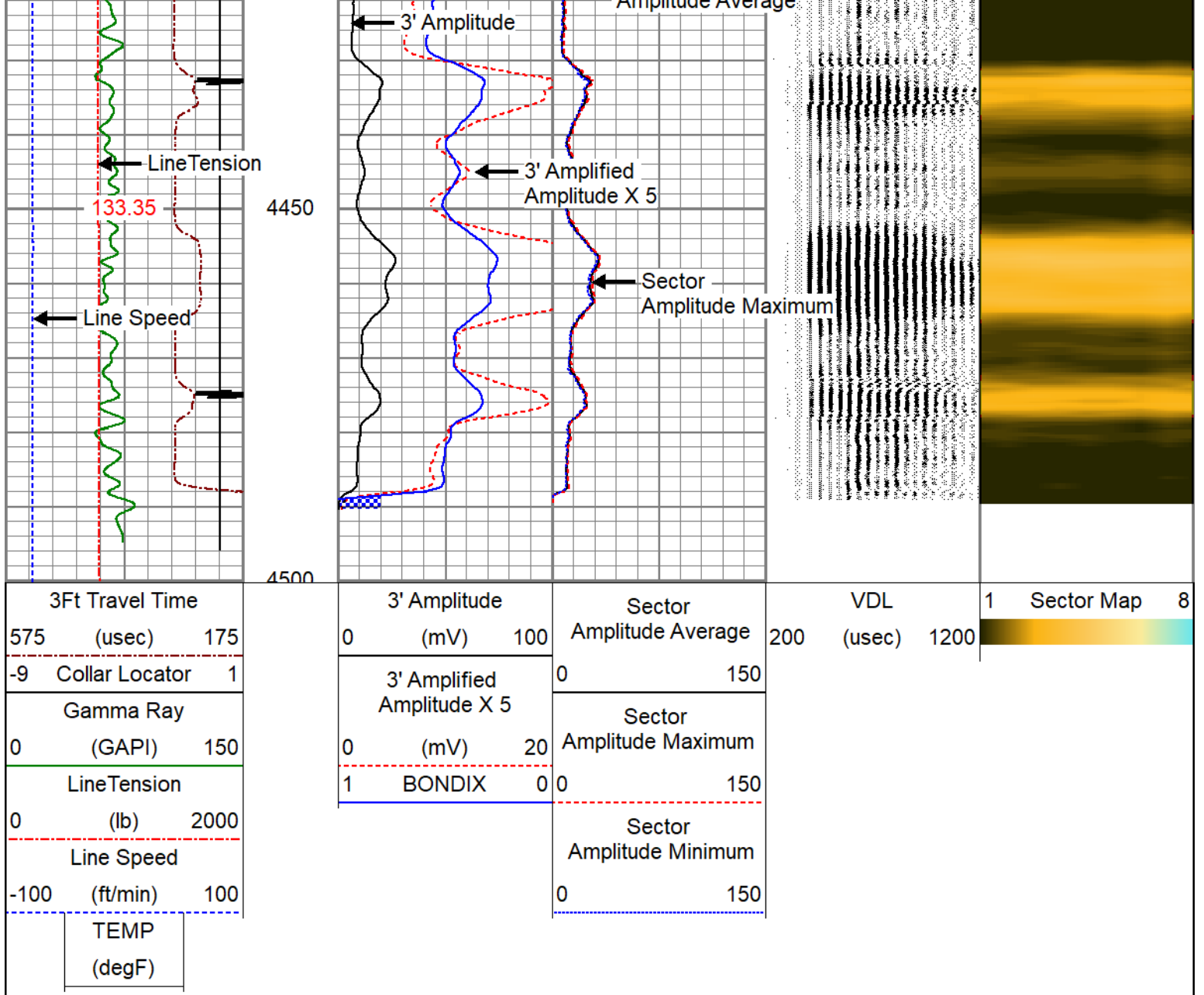










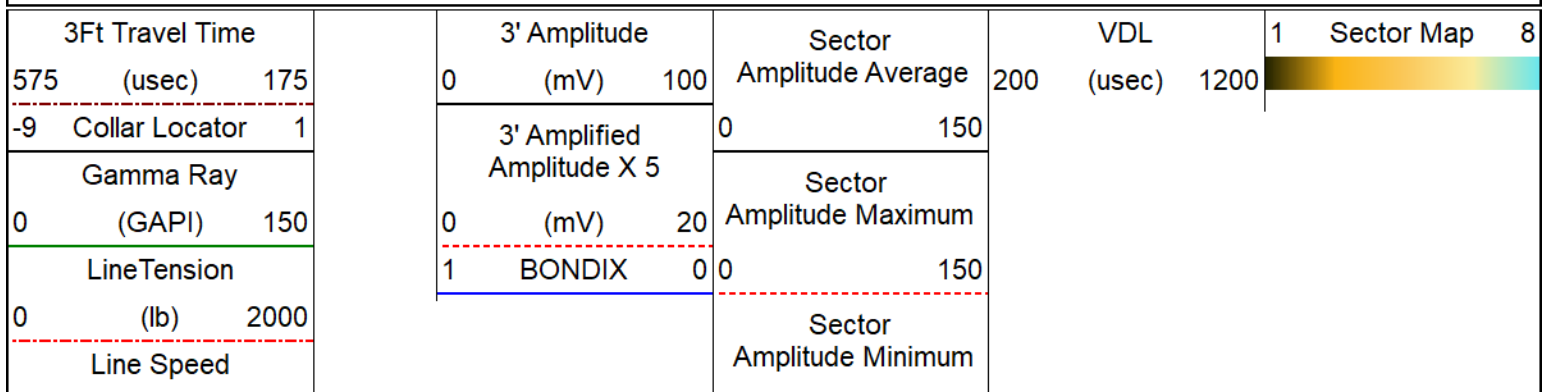


AXIS ENERGY SERVICES

REPEAT SECTION

ZERO PSI APPLIED AT SURFACE

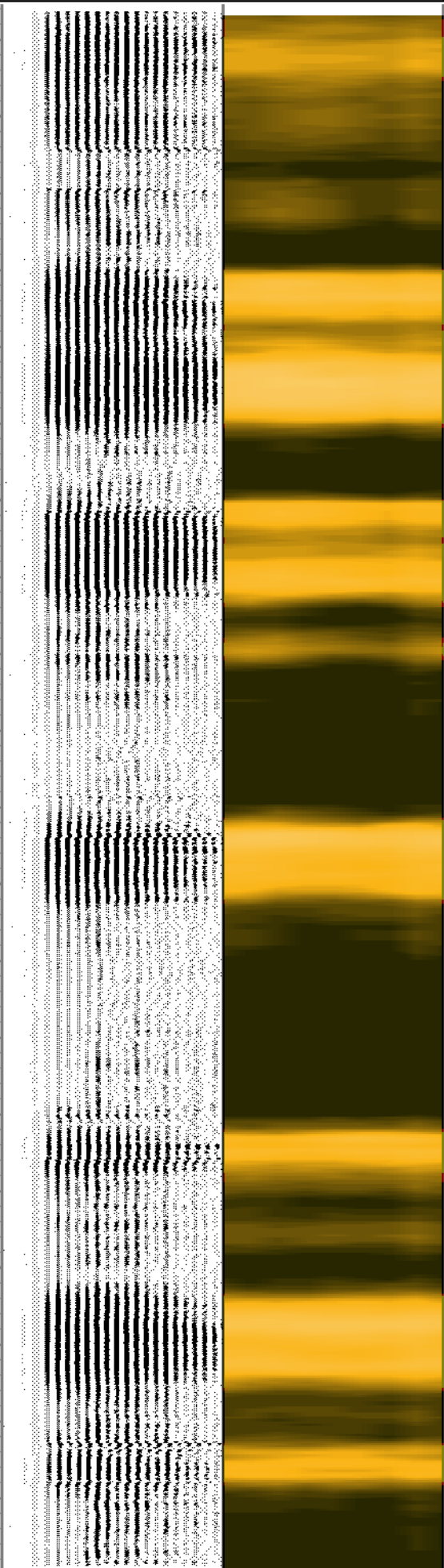
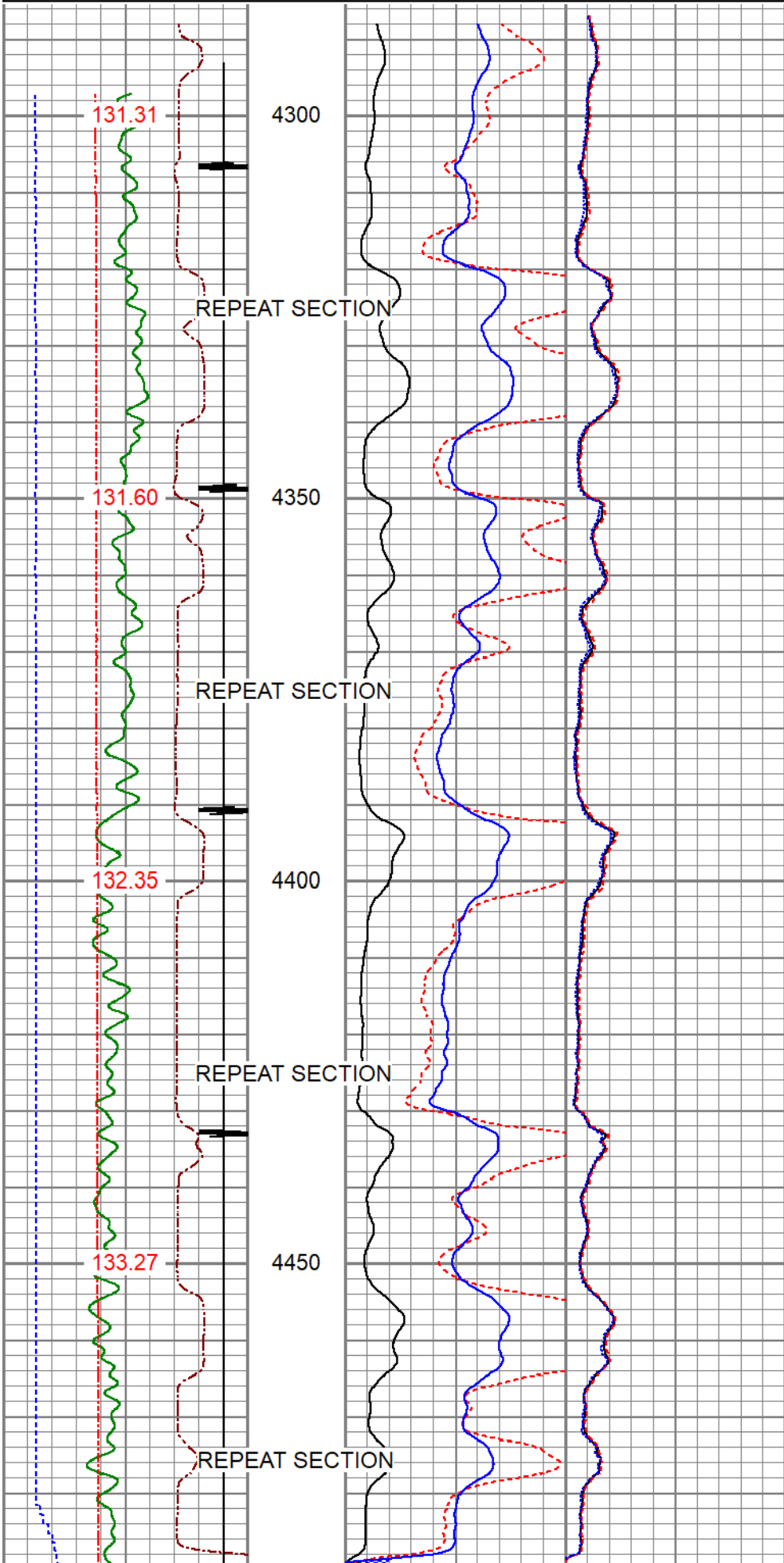
Database File oxy_graner 1-23a_rcbl_4500ft - 0ft_0psi_4-3-25.db
 Dataset Pathname pass2
 Presentation Format pinr_scbl
 Dataset Creation Thu Apr 03 12:20:18 2025
 Charted by Depth in Feet scaled 1:240



-100 (ft/min) 100

0 150

TEMP
(degF)



3Ft Travel Time			3' Amplitude			Sector			VDL			1 Sector Map 8	
575	(usec)	175	0	(mV)	100	Amplitude Average			200	(usec)	1200		
-9 Collar Locator 1			3' Amplified Amplitude X 5			Sector Amplitude Maximum							
0	(GAPI)	150	0	(mV)	20	Sector Amplitude Minimum							
LineTension			1 BONDIX 0			Sector Amplitude Minimum							
0	(lb)	2000				Sector Amplitude Minimum							
Line Speed						Sector Amplitude Minimum							
-100	(ft/min)	100				Sector Amplitude Minimum							
TEMP						Sector Amplitude Minimum							
(degF)						Sector Amplitude Minimum							

Calibration Report

Database File oxy_graner 1-23a_rcbl_4500ft - 0ft_0psi_4-3-25.db
Dataset Pathname pass3
Dataset Creation Thu Apr 03 12:24:24 2025

Gamma Ray Calibration Report

Serial Number: 140181
Tool Model: 275 Probe GCT
Performed: Tue Apr 11 10:14:32 2023

Calibrator Value: 1.0 GAPI

Background Reading: 0.0 cps
Calibrator Reading: 1.0 cps

Sensitivity: 0.5500 GAPI/cps

Segmented Cement Bond Log Calibration Report

Serial Number: FW1304-34
Tool Model: RBL-DC

Calibration Casing Diameter: 4.500 in
Calibration Depth: 3454.152 ft

Master Calibration, performed Thu Apr 03 12:06:56 2025:

	Raw (v)		Calibrated (mv)		Results	
	Zero	Cal	Zero	Cal	Gain	Offset
3'	0.009	1.429	0.800	81.196	56.615	0.287
CAL	1.580	1.519				
5'	0.030	1.583	0.800	81.196	51.793	-0.775
SUM						
S1	0.004	1.460	0.000	100.000	68.678	-0.242
S2	0.015	1.534	0.000	100.000	65.855	-0.998
S3	0.015	1.492	0.000	100.000	67.729	-1.028
S4	0.015	1.529	0.000	100.000	66.031	-0.962
S5	0.014	1.506	0.000	100.000	67.028	-0.931
S6	0.014	1.457	0.000	100.000	69.299	-0.999
S7	0.015	1.378	0.000	100.000	73.373	-1.093

S8 0.015 1.436 0.000 100.000 70.374 -1.089

Air Zero Calibration, performed Thu Apr 03 11:25:23 2025:

	Raw (v)	Calibrated (v)	Results
	Zero	Zero	Offset
3'	0.000	0.000	0.000
5'	0.000	0.000	0.000
SUM			
S1	0.000	0.000	0.000
S2	0.000	0.000	0.000
S3	0.000	0.000	0.000
S4	0.000	0.000	0.000
S5	0.000	0.000	0.000
S6	0.000	0.000	0.000
S7	0.000	0.000	0.000
S8	0.000	0.000	0.000



Company ANADARKO PETROLEUM CORP
Well GRANER 1-23A
Field WATTENBERG
County WELD
State CO