



Laramie Energy, LLC
BCU FED 0993-14-07W (Stg 1)
05-077-10610

SUMMARY - FRACTURING ZONE 1 TO 1

Start Time: 5/16/25 5:16 PM
End Time: 5/16/25 9:30 PM

AFE#: 0
County: 0
Formation: Cameo

SO Number: 250206U.F4.S1
Program #: 250206U.F4-1
District: Grand Junction
State: Colorado

TREATMENT

Volume						Pressures		Slurry Rate		Exposure
Clean [Bbl]	Clean [gal]	Slurry [Bbl]	Slurry [gal]	Wireline [Bbl]	Pad [Bbl]	Max [psi]	Average [psi]	Max [bbl/min]	Average [bbl/min]	Time [hh:mm:ss]
15,999.7	671,988	15,999.7	671,988	0.0	15,999.7	7,395	6,278	70.7	66.6	4:00:20

TECHNICAL

Treatment					Shut in Pressure					
Opening [psi]	Annulus [psi]	Load Hole [Bbl]	Break [psi]	Rate Break [bbl/min]	ISIP [psi]	1 Min [psi]	5 Min [psi]	10 Min [psi]	15 Min [psi]	Frac Gradient [psi/ft]
256	0	0	4,577	6	3,363	0	0	0	0	0.86

Flush Volumes			Flush Pressures		Perforations				Miscellaneous	
Flush [Bbl]	Flush [gal]	Over/UnderFlus [Bbl]	Max [psi]	Average [psi]	Displacement [Bbl]	Top Perf [ft]	Bottom Perf [ft]	TVD [ft]	Aux psi	Aux psi
0.0	0	-121.1	0	0	121.1	7,791	8,013	7,791		

MATERIALS

Note: Percent variance is reported as 0% if variance is within 1 gallon

Chemicals				Proppants					
Chemical Name	Digital [gal]	Physical [gal]	Variance [%]	Type	Pumped [lb]	Designed [lb]	Variance [%]	Minimum Conc. [ppg]	Maximum Conc. [ppg]
CalVisc™ HB 6870, High Viscosity Friction Reducer	144.5	145.0	0.0%						
Fincide GQ 12 A, Biocide	163.9	164.0	0.0%						
				Total Proppant	0	0			

FLUIDS

Base Fluid(s)		
Fluid Type	Amount [Bbl]	Amount [gal]
Fresh Water	15,999.7	671,988
Total Fluid	15,999.7	671,988
	Amount [Bbl]	Amount [gal]
Total Clean Frac	15,999.7	671,988.2
Total Clean Wireline	-	-
Total Clean Fluid	15,999.7	671,988.2

Fluid System(s)		
Type	Amount [Bbl]	Amount [gal]
CWS-600	15,999.7	671,988
CalVisc™	0.0	0
Total Fluid	15,999.7	671,988

Stage Description		
Type	Amount [Bbl]	Amount [gal]
Pad	15,999.7	671,988
Total Fluid	15,999.7	671,988



Laramie Energy, LLC
BCU FED 0993-14-07W (Stg 2)
05-077-10610

SUMMARY - FRACTURING ZONE 2 TO 2

Start Time: 5/17/25 9:53 AM
End Time: 5/17/25 1:19 PM

AFE#: 0
County: 0
Formation: Cameo

SO Number: 250206U.F4.S1
Program #: 250206U.F4-1
District: Grand Junction
State: Colorado

TREATMENT

Volume						Pressures		Slurry Rate		Exposure
Clean [Bbl]	Clean [gal]	Slurry [Bbl]	Slurry [gal]	Wireline [Bbl]	Pad [Bbl]	Max [psi]	Average [psi]	Max [bbl/min]	Average [bbl/min]	Time [hh:mm:ss]
15,998.5	671,939	15,998.5	671,939	0.0	15,998.5	7,236	6,465	80.6	78.3	3:24:16

TECHNICAL

Treatment					Shut in Pressure					
Opening [psi]	Annulus [psi]	Load Hole [Bbl]	Break [psi]	Rate Break [bbl/min]	ISIP [psi]	1 Min [psi]	5 Min [psi]	10 Min [psi]	15 Min [psi]	Frac Gradient [psi/ft]
2,184	0	0	2,992	8	2,922	2,590	0	0	0	0.82

Flush Volumes			Flush Pressures		Perforations				Miscellaneous	
Flush [Bbl]	Flush [gal]	Over/UnderFlus [Bbl]	Max [psi]	Average [psi]	Displacement [Bbl]	Top Perf [ft]	Bottom Perf [ft]	TVD [ft]	Aux psi	Aux psi
0.0	0	-117.1	0	0	117.1	7,533	7,752	7,533		

MATERIALS

Note: Percent variance is reported as 0% if variance is within 1 gallon

Chemicals				Proppants					
Chemical Name	Digital [gal]	Physical [gal]	Variance [%]	Type	Pumped [lb]	Designed [lb]	Variance [%]	Minimum Conc. [ppg]	Maximum Conc. [ppg]
CalVisc™ HB 6870, High Viscosity Friction Reducer	163.3	163.0	0.0%						
Fincide GQ 12 A, Biocide	167.7	168.0	0.0%						
				Total Proppant	0	0			

FLUIDS

Base Fluid(s)		
Fluid Type	Amount [Bbl]	Amount [gal]
Fresh Water	15,998.5	671,939
Total Fluid	15,998.5	671,939
	Amount [Bbl]	Amount [gal]
Total Clean Frac	15,998.5	671,938.6
Total Clean Wireline	-	-
Total Clean Fluid	15,998.5	671,938.6

Fluid System(s)		
Type	Amount [Bbl]	Amount [gal]
CWS-600	15,998.5	671,939
CalVisc™	0.0	0
Total Fluid	15,998.5	671,939

Stage Description		
Type	Amount [Bbl]	Amount [gal]
Pad	15,998.5	671,939
Total Fluid	15,998.5	671,939



Laramie Energy, LLC
BCU FED 0993-14-07W (Stg 3)
05-077-10610

SUMMARY - FRACTURING ZONE 3 TO 3

Start Time: 5/18/25 1:50 AM
End Time: 5/18/25 5:16 AM

AFE#: 0
County: 0
Formation: Cameo

SO Number: 250206U.F4.S1
Program #: 250206U.F4-1
District: Grand Junction
State: Colorado

TREATMENT

Volume						Pressures		Slurry Rate		Exposure
Clean [Bbl]	Clean [gal]	Slurry [Bbl]	Slurry [gal]	Wireline [Bbl]	Pad [Bbl]	Max [psi]	Average [psi]	Max [bbl/min]	Average [bbl/min]	Time [hh:mm:ss]
16,000.3	672,014	16,000.3	672,014	0.0	16,000.3	6,398	5,666	80.9	78.5	3:23:51

TECHNICAL

Treatment					Shut in Pressure					
Opening [psi]	Annulus [psi]	Load Hole [Bbl]	Break [psi]	Rate Break [bbl/min]	ISIP [psi]	1 Min [psi]	5 Min [psi]	10 Min [psi]	15 Min [psi]	Frac Gradient [psi/ft]
0	0	0	0	1,652	2,660	0	0	0	0	0.80

Flush Volumes			Flush Pressures		Perforations				Miscellaneous	
Flush [Bbl]	Flush [gal]	Over/UnderFlus [Bbl]	Max [psi]	Average [psi]	Displacement [Bbl]	Top Perf [ft]	Bottom Perf [ft]	TVD [ft]	Aux psi	Aux psi
0.0	0	-113.1	0	0	113.1	7,275	7,521	7,275		

MATERIALS

Note: Percent variance is reported as 0% if variance is within 1 gallon

Chemicals				Proppants					
Chemical Name	Digital [gal]	Physical [gal]	Variance [%]	Type	Pumped [lb]	Designed [lb]	Variance [%]	Minimum Conc. [ppg]	Maximum Conc. [ppg]
CalVisc™ HB 6870, High Viscosity Friction Reducer	177.9	178.0	0.0%						
Fincide GQ 12 A, Biocide	162.0	162.0	0.0%						
				Total Proppant	0	0			

FLUIDS

Base Fluid(s)		
Fluid Type	Amount [Bbl]	Amount [gal]
Fresh Water	16,000.3	672,014
Total Fluid	16,000.3	672,014
	Amount [Bbl]	Amount [gal]
Total Clean Frac	16,000.3	672,013.8
Total Clean Wireline	-	-
Total Clean Fluid	16,000.3	672,013.8

Fluid System(s)		
Type	Amount [Bbl]	Amount [gal]
CWS-600	16,000.3	672,014
CalVisc™	0.0	0
Total Fluid	16,000.3	672,014

Stage Description		
Type	Amount [Bbl]	Amount [gal]
Pad	16,000.3	672,014
Total Fluid	16,000.3	672,014



Laramie Energy, LLC
BCU FED 0993-14-07W (Stg 4)
05-077-10610

SUMMARY - FRACTURING ZONE 4 TO 4

Start Time: 5/18/25 5:43 PM
End Time: 5/18/25 9:10 PM

AFE#: 0
County: 0
Formation: Cameo

SO Number: 250206U.F4.S1
Program #: 250206U.F4-1
District: Grand Junction
State: Colorado

TREATMENT

Volume						Pressures		Slurry Rate		Exposure
Clean [Bbl]	Clean [gal]	Slurry [Bbl]	Slurry [gal]	Wireline [Bbl]	Pad [Bbl]	Max [psi]	Average [psi]	Max [bbl/min]	Average [bbl/min]	Time [hh:mm:ss]
11,000.1	462,005	11,000.1	462,005	0.0	11,000.1	5,923	5,661	80.6	78.1	2:20:48

TECHNICAL

Treatment					Shut in Pressure					
Opening [psi]	Annulus [psi]	Load Hole [Bbl]	Break [psi]	Rate Break [bbl/min]	ISIP [psi]	1 Min [psi]	5 Min [psi]	10 Min [psi]	15 Min [psi]	Frac Gradient [psi/ft]
0	0	0	1,621	7	2,245	0	0	0	0	0.76

Flush Volumes			Flush Pressures		Perforations				Miscellaneous	
Flush [Bbl]	Flush [gal]	Over/UnderFlus [Bbl]	Max [psi]	Average [psi]	Displacement [Bbl]	Top Perf [ft]	Bottom Perf [ft]	TVD [ft]	Aux psi	Aux psi
0.0	0	-108.1	0	0	108.1	6,954	7,252	6,954		

MATERIALS

Note: Percent variance is reported as 0% if variance is within 1 gallon

Chemicals				Proppants					
Chemical Name	Digital [gal]	Physical [gal]	Variance [%]	Type	Pumped [lb]	Designed [lb]	Variance [%]	Minimum Conc. [ppg]	Maximum Conc. [ppg]
CalVisc™ HB 6870, High Viscosity Friction Reducer	173.8	174.0	0.0%						
Fincide GQ 12 A, Biocide	166.1	166.0	0.0%						
				Total Proppant	0	0			

FLUIDS

Base Fluid(s)		
Fluid Type	Amount [Bbl]	Amount [gal]
Fresh Water	11,000.1	462,005
Total Fluid	11,000.1	462,005
	Amount [Bbl]	Amount [gal]
Total Clean Frac	11,000.1	462,004.9
Total Clean Wireline	-	-
Total Clean Fluid	11,000.1	462,004.9

Fluid System(s)		
Type	Amount [Bbl]	Amount [gal]
CWS-600	11,000.1	462,005
CalVisc™	0.0	0
Total Fluid	11,000.1	462,005

Stage Description		
Type	Amount [Bbl]	Amount [gal]
Pad	11,000.1	462,005
Total Fluid	11,000.1	462,005



Laramie Energy, LLC
BCU FED 0993-14-07W (Stg 5)
05-077-10610

SUMMARY - FRACTURING ZONE 5 TO 5

Start Time: 5/19/25 8:29 AM
End Time: 5/19/25 12:58 PM

AFE#: 0
County: 0
Formation: Cameo

SO Number: 250206U.F4.S1
Program #: 250206U.F4-1
District: Grand Junction
State: Colorado

TREATMENT

Volume						Pressures		Slurry Rate		Exposure
Clean [Bbl]	Clean [gal]	Slurry [Bbl]	Slurry [gal]	Wireline [Bbl]	Pad [Bbl]	Max [psi]	Average [psi]	Max [bbl/min]	Average [bbl/min]	Time [hh:mm:ss]
16,000.2	672,008	16,000.2	672,008	0.0	16,000.2	5,312	4,884	80.7	80.2	3:19:26

TECHNICAL

Treatment					Shut in Pressure					
Opening [psi]	Annulus [psi]	Load Hole [Bbl]	Break [psi]	Rate Break [bbl/min]	ISIP [psi]	1 Min [psi]	5 Min [psi]	10 Min [psi]	15 Min [psi]	Frac Gradient [psi/ft]
1,253	0	0	1,871	8	2,143	1,875	0	0	0	0.75

Flush Volumes			Flush Pressures		Perforations				Miscellaneous	
Flush [Bbl]	Flush [gal]	Over/UnderFlus [Bbl]	Max [psi]	Average [psi]	Displacement [Bbl]	Top Perf [ft]	Bottom Perf [ft]	TVD [ft]	Aux psi	Aux psi
0.0	0	-103.7	0	0	103.7	6,672	6,921	6,672		

MATERIALS

Note: Percent variance is reported as 0% if variance is within 1 gallon

Chemicals				Proppants					
Chemical Name	Digital [gal]	Physical [gal]	Variance [%]	Type	Pumped [lb]	Designed [lb]	Variance [%]	Minimum Conc. [ppg]	Maximum Conc. [ppg]
CalVisc™ HB 6870, High Viscosity Friction Reducer									
Fincide GQ 12 A, Biocide									
Total Proppant					0	0			

FLUIDS

Base Fluid(s)		
Fluid Type	Amount [Bbl]	Amount [gal]
Fresh Water	16,000.2	672,008
Total Fluid	16,000.2	672,008
	Amount [Bbl]	Amount [gal]
Total Clean Frac	16,000.2	672,008.4
Total Clean Wireline	-	-
Total Clean Fluid	16,000.2	672,008.4

Fluid System(s)		
Type	Amount [Bbl]	Amount [gal]
CWS-600	16,000.2	672,008
CalVisc™	0.0	0
Total Fluid	16,000.2	672,008

Stage Description		
Type	Amount [Bbl]	Amount [gal]
Pad	16,000.2	672,008
Total Fluid	16,000.2	672,008



Laramie Energy, LLC
BCU FED 0993-14-07W (Stg 6)
05-077-10610

SUMMARY - FRACTURING ZONE 6 TO 6

Start Time: 5/20/25 1:25 AM
End Time: 5/20/25 4:40 AM

AFE#: 0
County: 0
Formation: Cameo

SO Number: 250206U.F4.S1
Program #: 250206U.F4-1
District: Grand Junction
State: Colorado

TREATMENT

Volume						Pressures		Slurry Rate		Exposure
Clean [Bbl]	Clean [gal]	Slurry [Bbl]	Slurry [gal]	Wireline [Bbl]	Pad [Bbl]	Max [psi]	Average [psi]	Max [bbl/min]	Average [bbl/min]	Time [hh:mm:ss]
15,000.6	630,027	15,000.6	630,027	0.0	15,000.6	6,799	4,801	80.7	78.1	3:11:58

TECHNICAL

Treatment					Shut in Pressure					
Opening [psi]	Annulus [psi]	Load Hole [Bbl]	Break [psi]	Rate Break [bbl/min]	ISIP [psi]	1 Min [psi]	5 Min [psi]	10 Min [psi]	15 Min [psi]	Frac Gradient [psi/ft]
1,087	0	0	1,377	6	2,103	0	0	0	0	0.76

Flush Volumes			Flush Pressures		Perforations				Miscellaneous	
Flush [Bbl]	Flush [gal]	Over/UnderFlus [Bbl]	Max [psi]	Average [psi]	Displacement [Bbl]	Top Perf [ft]	Bottom Perf [ft]	TVD [ft]	Aux psi	Aux psi
0.0	0	-99.8	0	0	99.8	6,422	6,633	6,422		

MATERIALS

Note: Percent variance is reported as 0% if variance is within 1 gallon

Chemicals				Proppants					
Chemical Name	Digital [gal]	Physical [gal]	Variance [%]	Type	Pumped [lb]	Designed [lb]	Variance [%]	Minimum Conc. [ppg]	Maximum Conc. [ppg]
CalVisc™ HB 6870, High Viscosity Friction Reducer	164.6	165.0	0.0%						
Fincide GQ 12 A, Biocide	163.4	163.0	0.0%						
				Total Proppant	0	0			

FLUIDS

Base Fluid(s)		
Fluid Type	Amount [Bbl]	Amount [gal]
Fresh Water	15,000.6	630,027
Total Fluid	15,000.6	630,027
	Amount [Bbl]	Amount [gal]
Total Clean Frac	15,000.6	630,027.0
Total Clean Wireline	-	-
Total Clean Fluid	15,000.6	630,027.0

Fluid System(s)		
Type	Amount [Bbl]	Amount [gal]
CWS-600	15,000.6	630,027
CalVisc™	0.0	0
Total Fluid	15,000.6	630,027

Stage Description		
Type	Amount [Bbl]	Amount [gal]
Pad	15,000.6	630,027
Total Fluid	15,000.6	630,027



Laramie Energy, LLC
BCU FED 0993-14-07W (Stg 7)
05-077-10610

SUMMARY - FRACTURING ZONE 7 TO 7

Start Time: 5/20/25 3:44 PM
End Time: 5/20/25 6:56 PM

AFE#: 0
County: 0
Formation: Cameo

SO Number: 250206U.F4.S1
Program #: 250206U.F4-1
District: Grand Junction
State: Colorado

TREATMENT

Volume						Pressures		Slurry Rate		Exposure
Clean [Bbl]	Clean [gal]	Slurry [Bbl]	Slurry [gal]	Wireline [Bbl]	Pad [Bbl]	Max [psi]	Average [psi]	Max [bbl/min]	Average [bbl/min]	Time [hh:mm:ss]
15,001.2	630,051	15,001.2	630,051	0.0	15,001.2	5,261	4,712	82.7	78.5	3:11:04

TECHNICAL

Treatment					Shut in Pressure					
Opening [psi]	Annulus [psi]	Load Hole [Bbl]	Break [psi]	Rate Break [bbl/min]	ISIP [psi]	1 Min [psi]	5 Min [psi]	10 Min [psi]	15 Min [psi]	Frac Gradient [psi/ft]
971	0	0	1,259	4	2,069	0	0	0	0	0.77

Flush Volumes			Flush Pressures		Perforations				Miscellaneous	
Flush [Bbl]	Flush [gal]	Over/UnderFlus [Bbl]	Max [psi]	Average [psi]	Displacement [Bbl]	Top Perf [ft]	Bottom Perf [ft]	TVD [ft]	Aux psi	Aux psi
0.0	0	-96.1	0	0	96.1	6,186	6,356	6,186		

MATERIALS

Note: Percent variance is reported as 0% if variance is within 1 gallon

Chemicals				Proppants					
Chemical Name	Digital [gal]	Physical [gal]	Variance [%]	Type	Pumped [lb]	Designed [lb]	Variance [%]	Minimum Conc. [ppg]	Maximum Conc. [ppg]
CalVisc™ HB 6870, High Viscosity Friction Reducer	131.0	131.0	0.0%						
Fincide GQ 12 A, Biocide	154.4	154.0	0.0%						
				Total Proppant	0	0			

FLUIDS

Base Fluid(s)		
Fluid Type	Amount [Bbl]	Amount [gal]
Fresh Water	15,001.2	630,051
Total Fluid	15,001.2	630,051
	Amount [Bbl]	Amount [gal]
Total Clean Frac	15,001.2	630,051.4
Total Clean Wireline	-	-
Total Clean Fluid	15,001.2	630,051.4

Fluid System(s)		
Type	Amount [Bbl]	Amount [gal]
CWS-600	15,001.2	630,051
CalVisc™	0.0	0
Total Fluid	15,001.2	630,051

Stage Description		
Type	Amount [Bbl]	Amount [gal]
Pad	15,001.2	630,051
Total Fluid	15,001.2	630,051

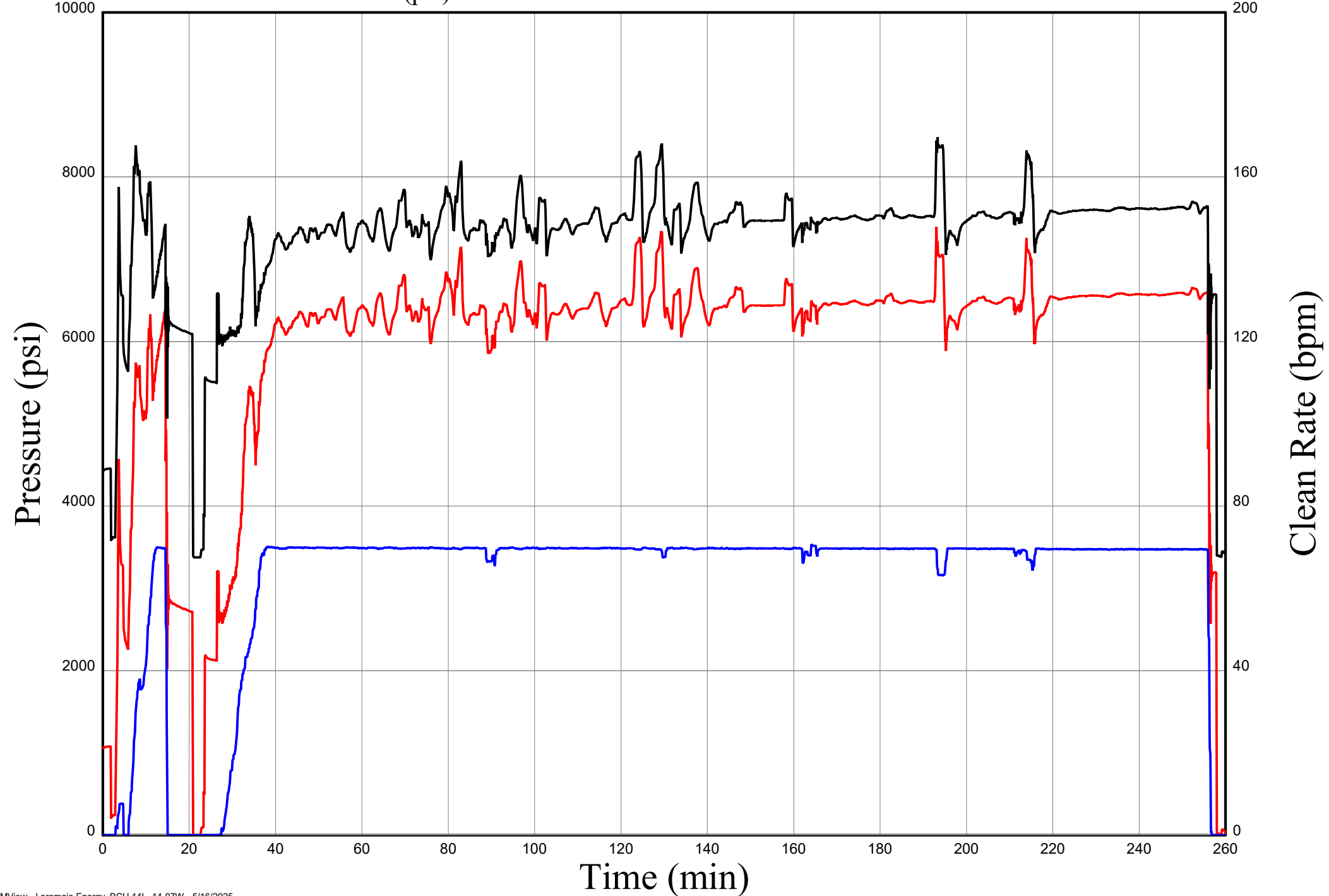
Surface and Treatment Plot, Laramie Energy BCU 14L, 14-07W, Stage 1

— Treating Pressure (psi)

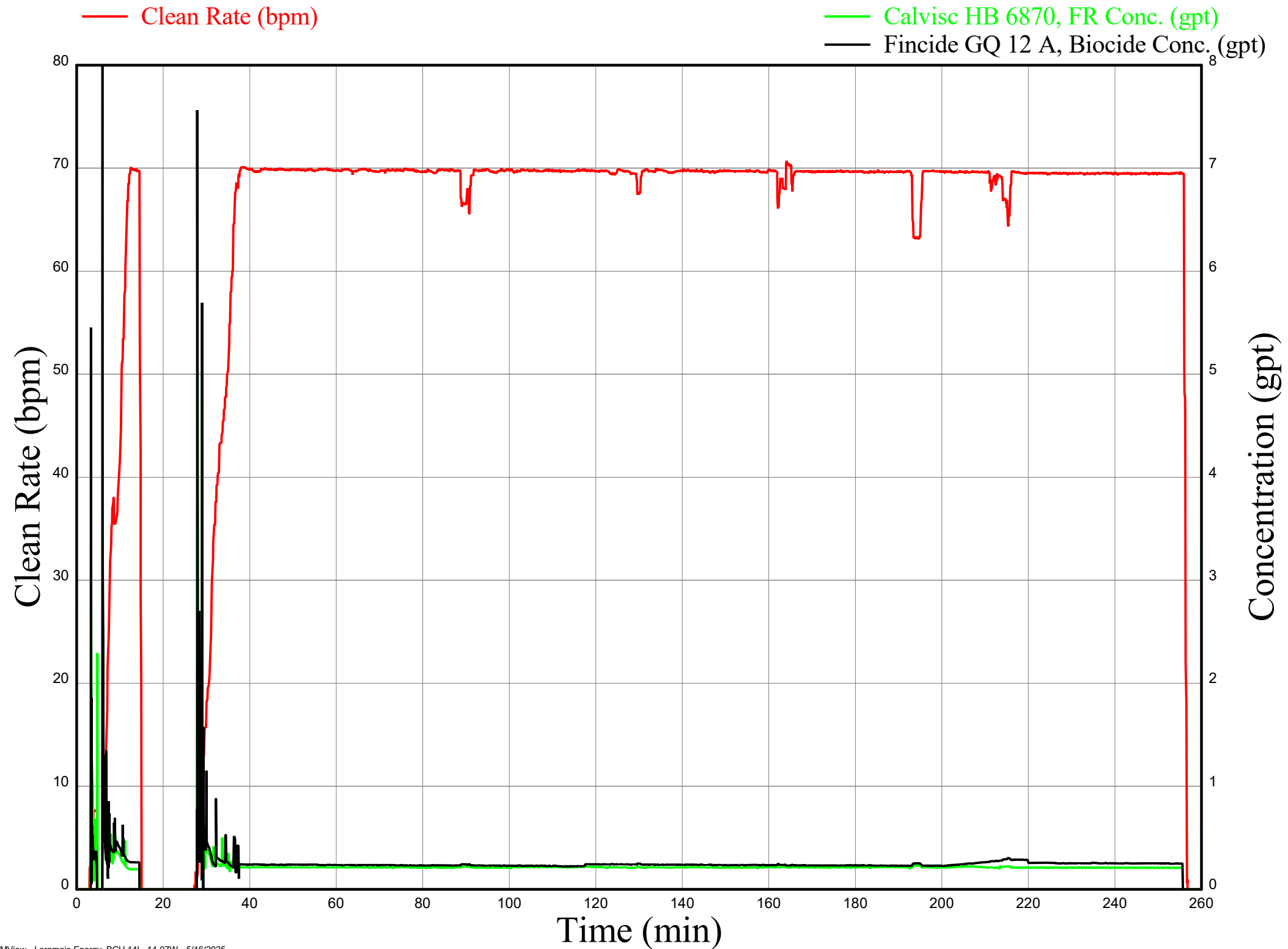
— Backside Pressure (psi)

— Bottom Hole Pressure (psi)

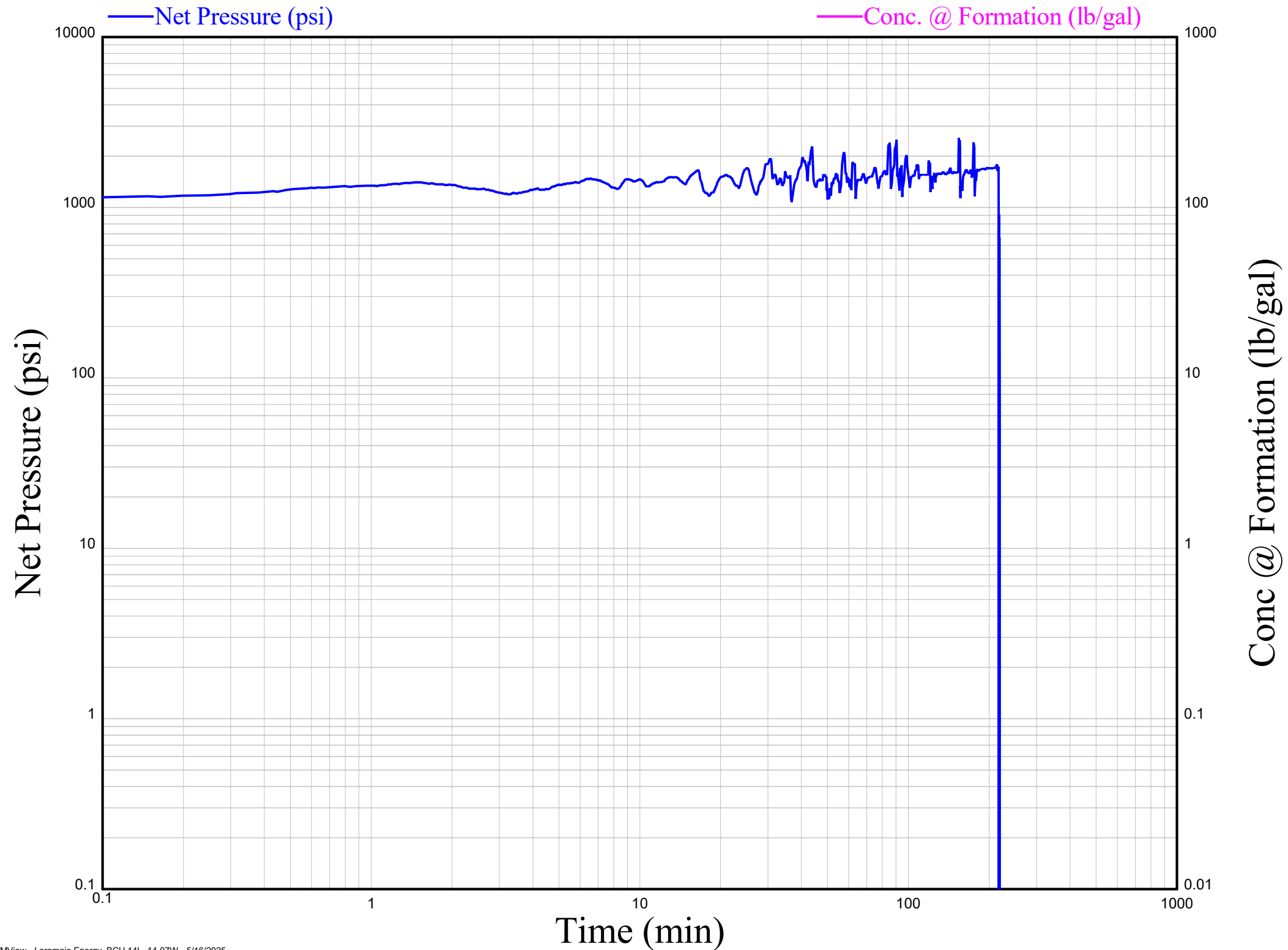
— Clean Rate (bpm)



Chemical Plot, Laramie Energy BCU 14L, 14-07W, Stage 1



NBHP Plot, Laramie Energy BCU 14L, 14-07W, Stage 1



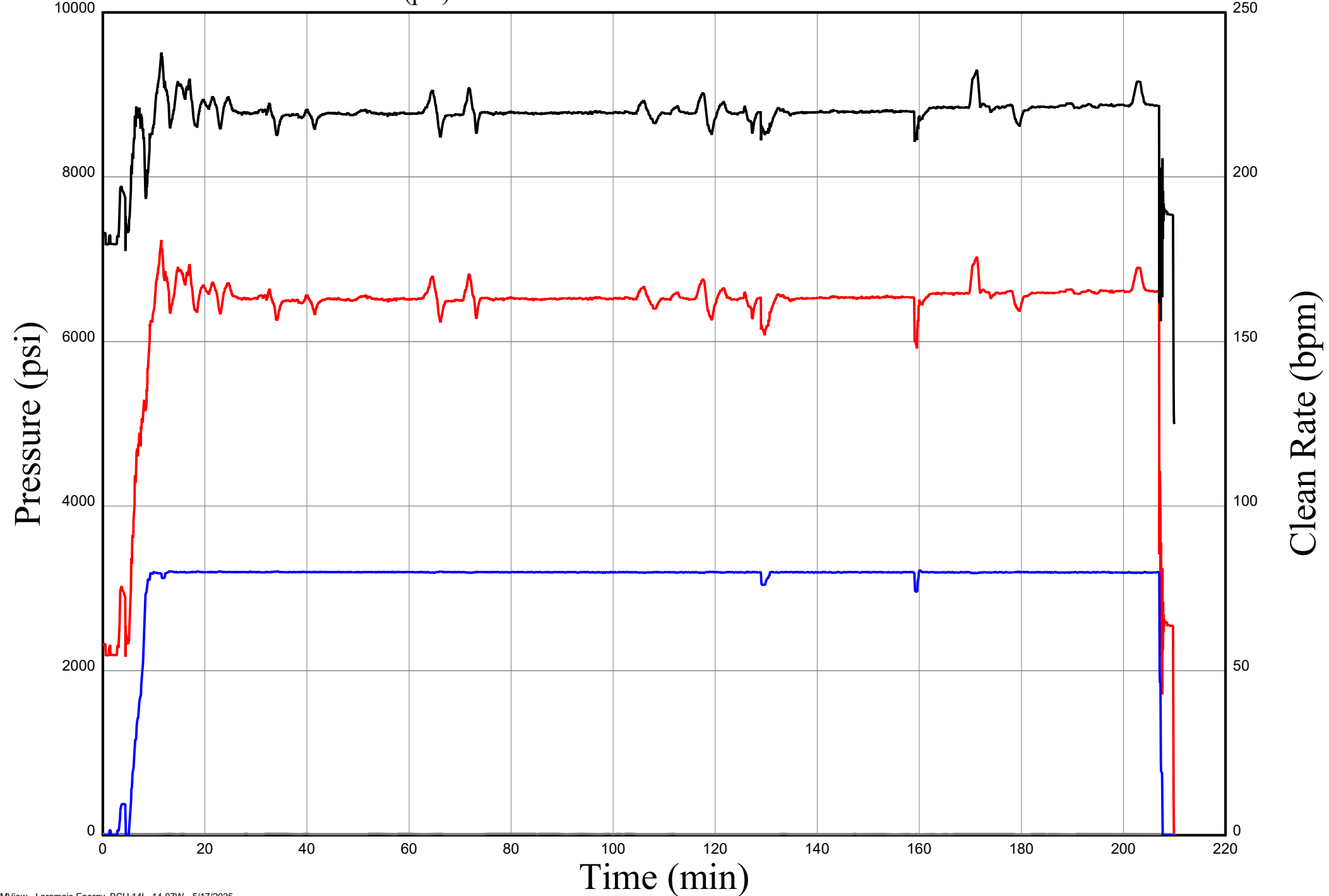
Surface and Treatment Plot, Laramie Energy BCU 14L, 14-07W, Stage 2

— Treating Pressure (psi)

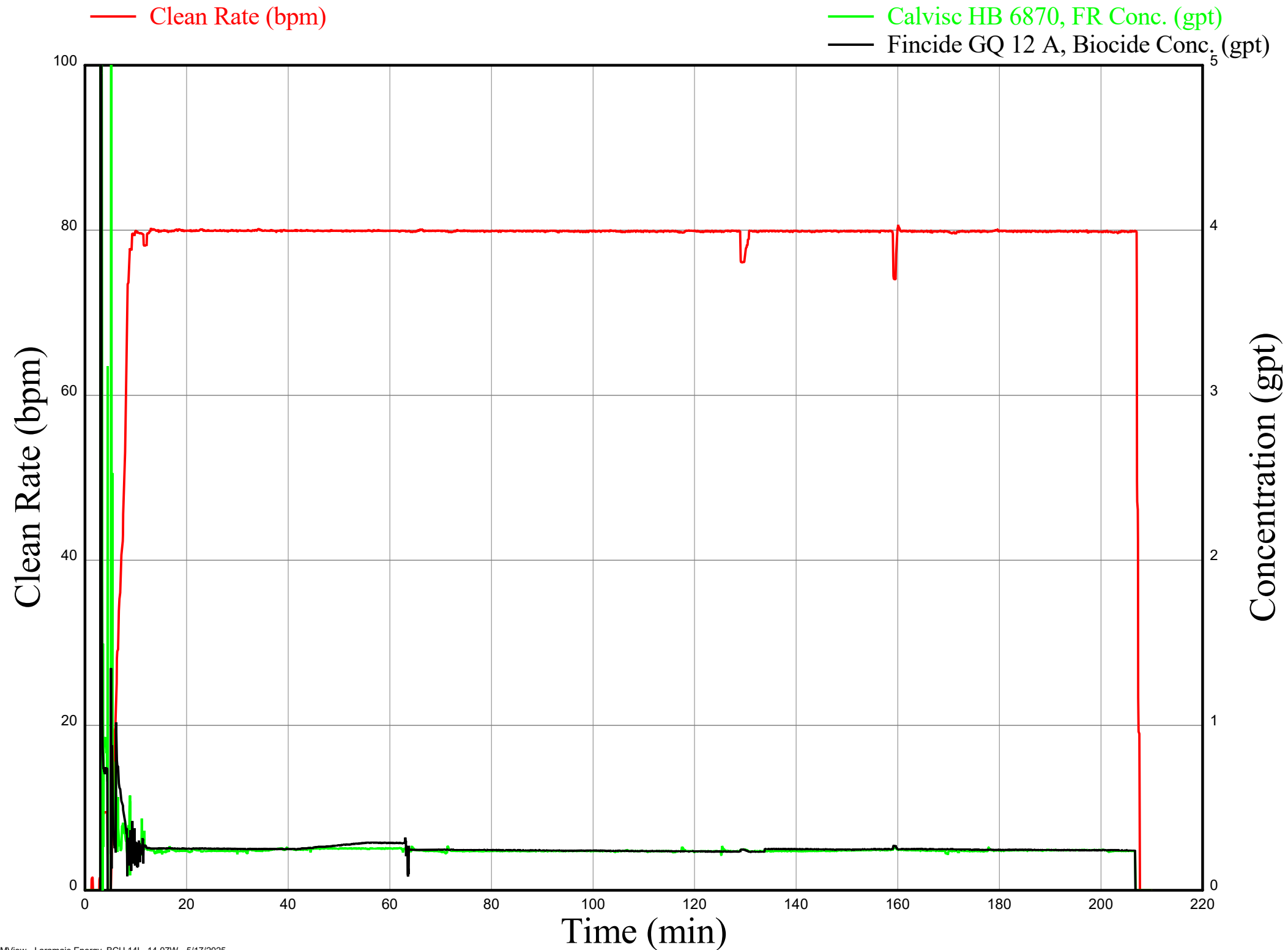
— Clean Rate (bpm)

— Backside Pressure (psi)

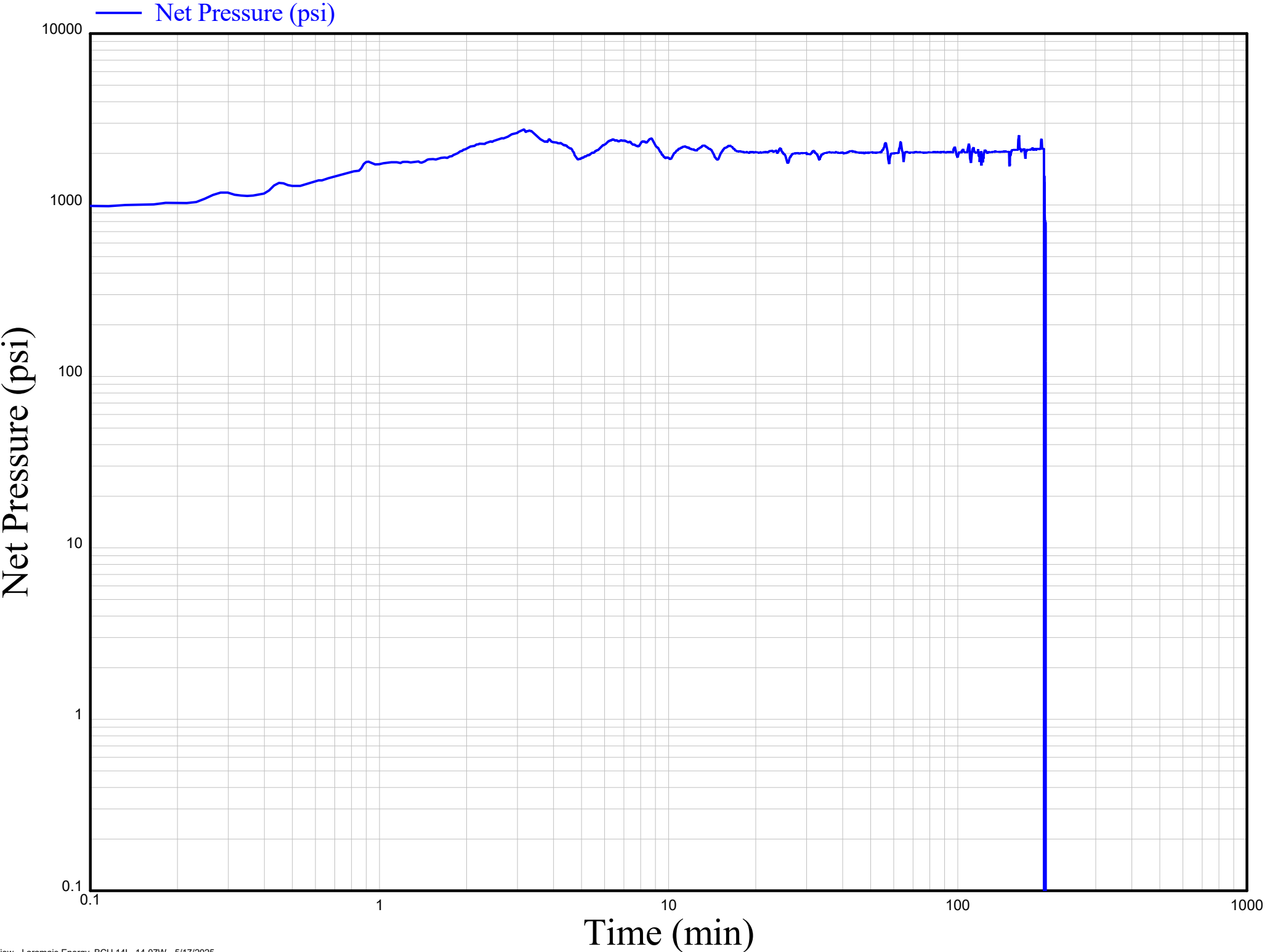
— Bottom Hole Pressure (psi)



Chemical Plot, Laramie Energy BCU 14L, 14-07W, Stage 2



NBHP Plot, Laramie Energy BCU 14L, 14-07W, Stage 2



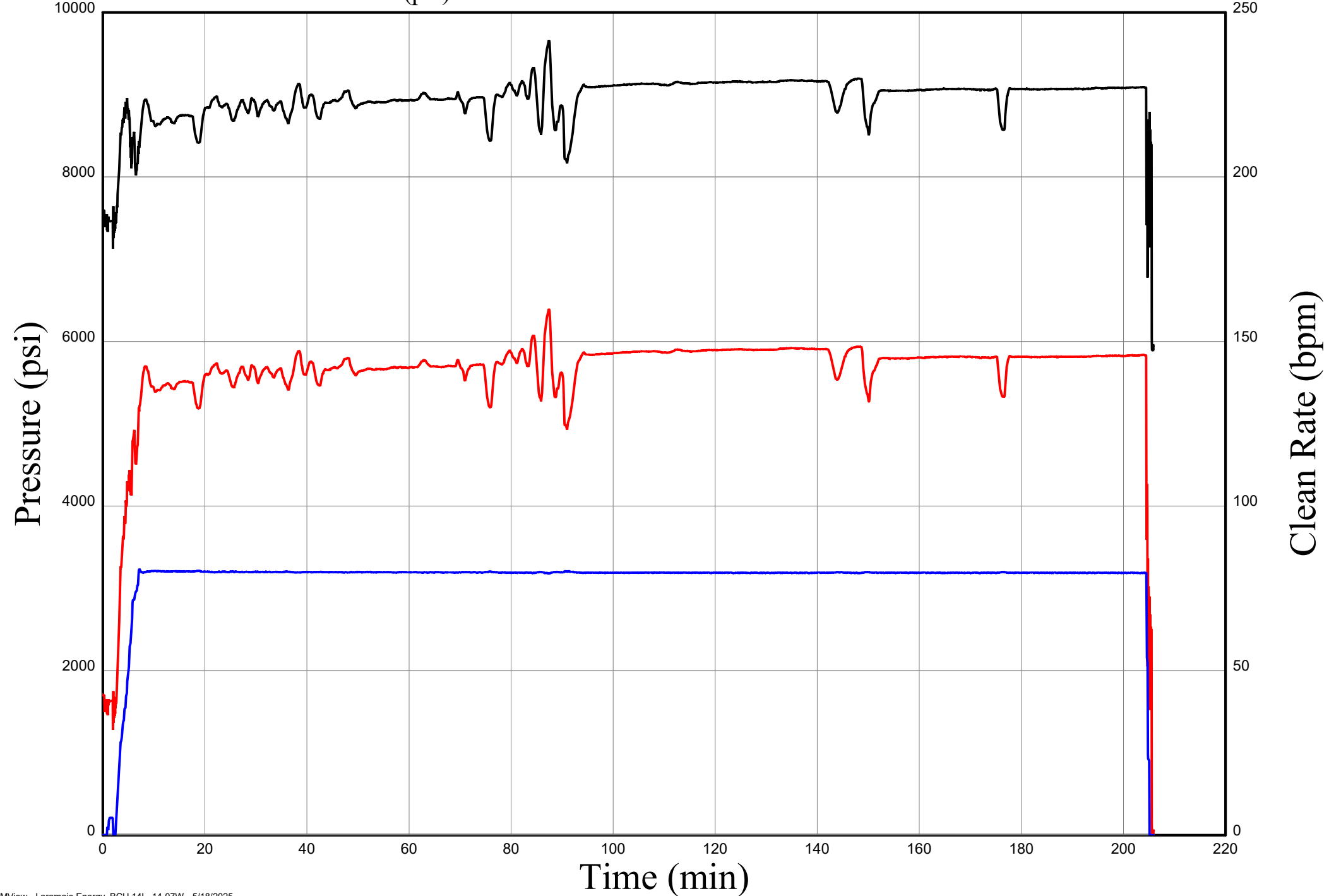
Surface and Treatment Plot, Laramie Energy BCU 14L, 14-07W, Stage 3

— Treating Pressure (psi)

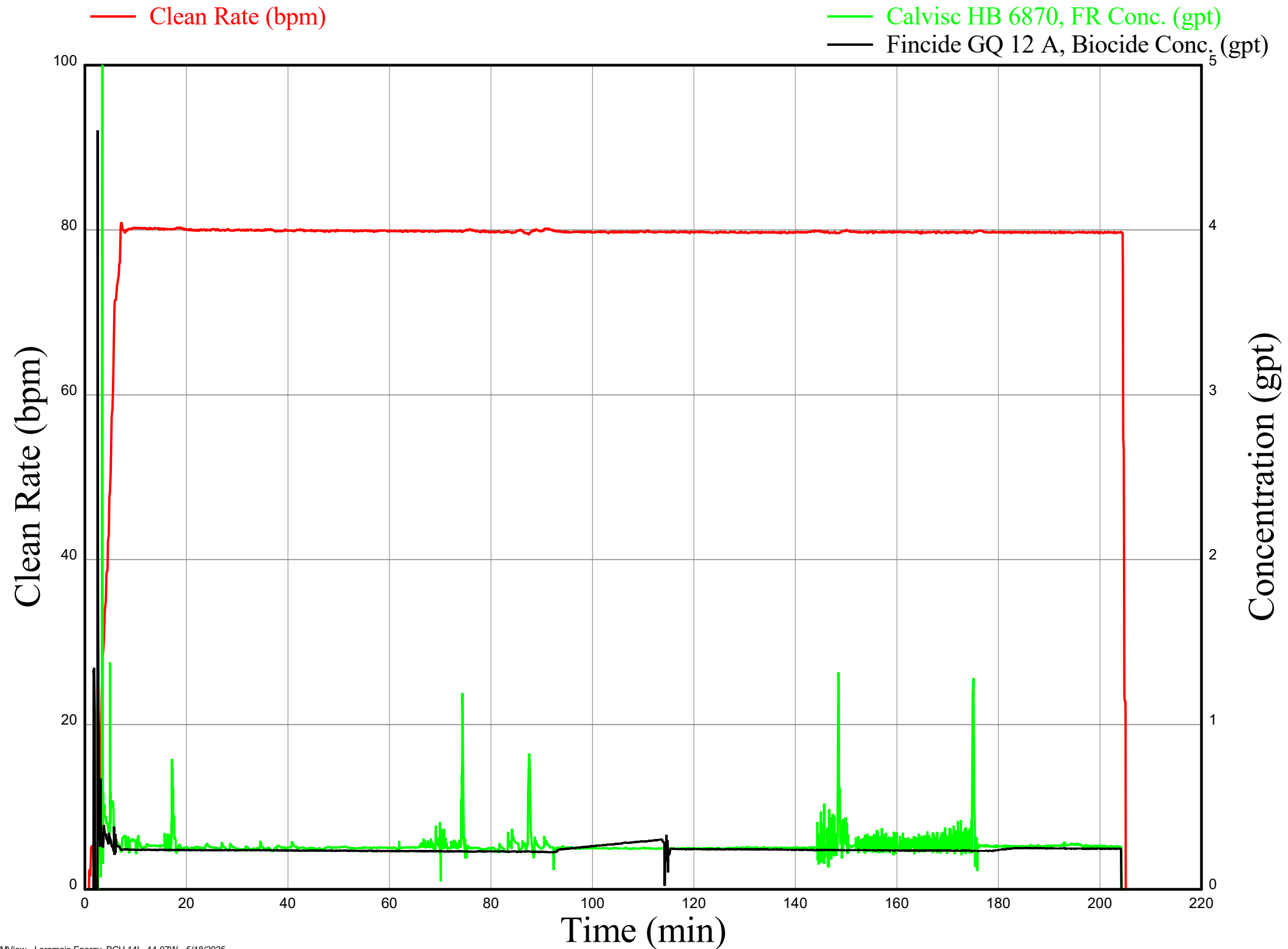
— Clean Rate (bpm)

— Backside Pressure (psi)

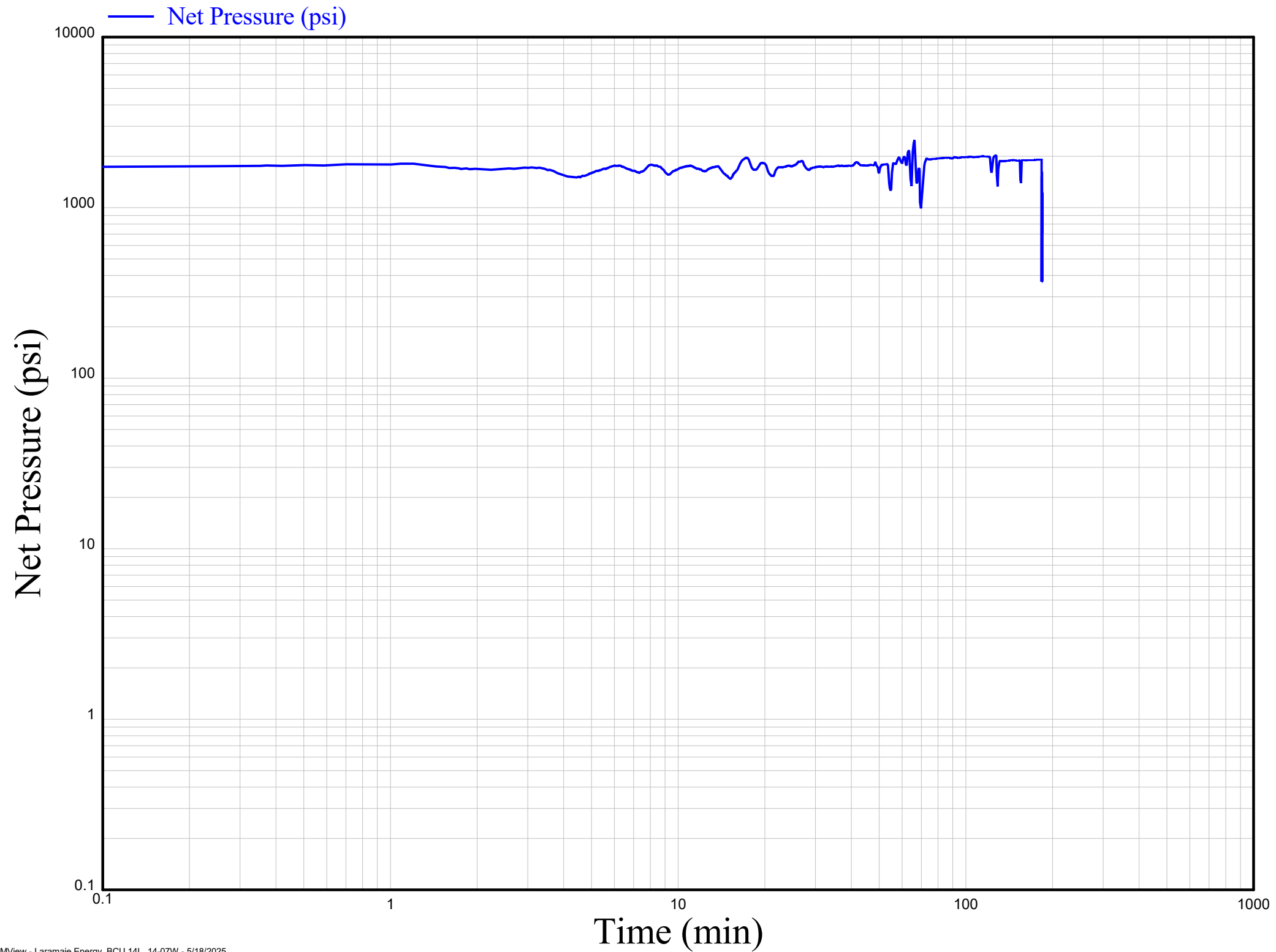
— Bottom Hole Pressure (psi)



Chemical Plot, Laramie Energy BCU 14L, 14-07W, Stage 3



NBHP Plot, Laramie Energy BCU 14L, 14-07W, Stage 3



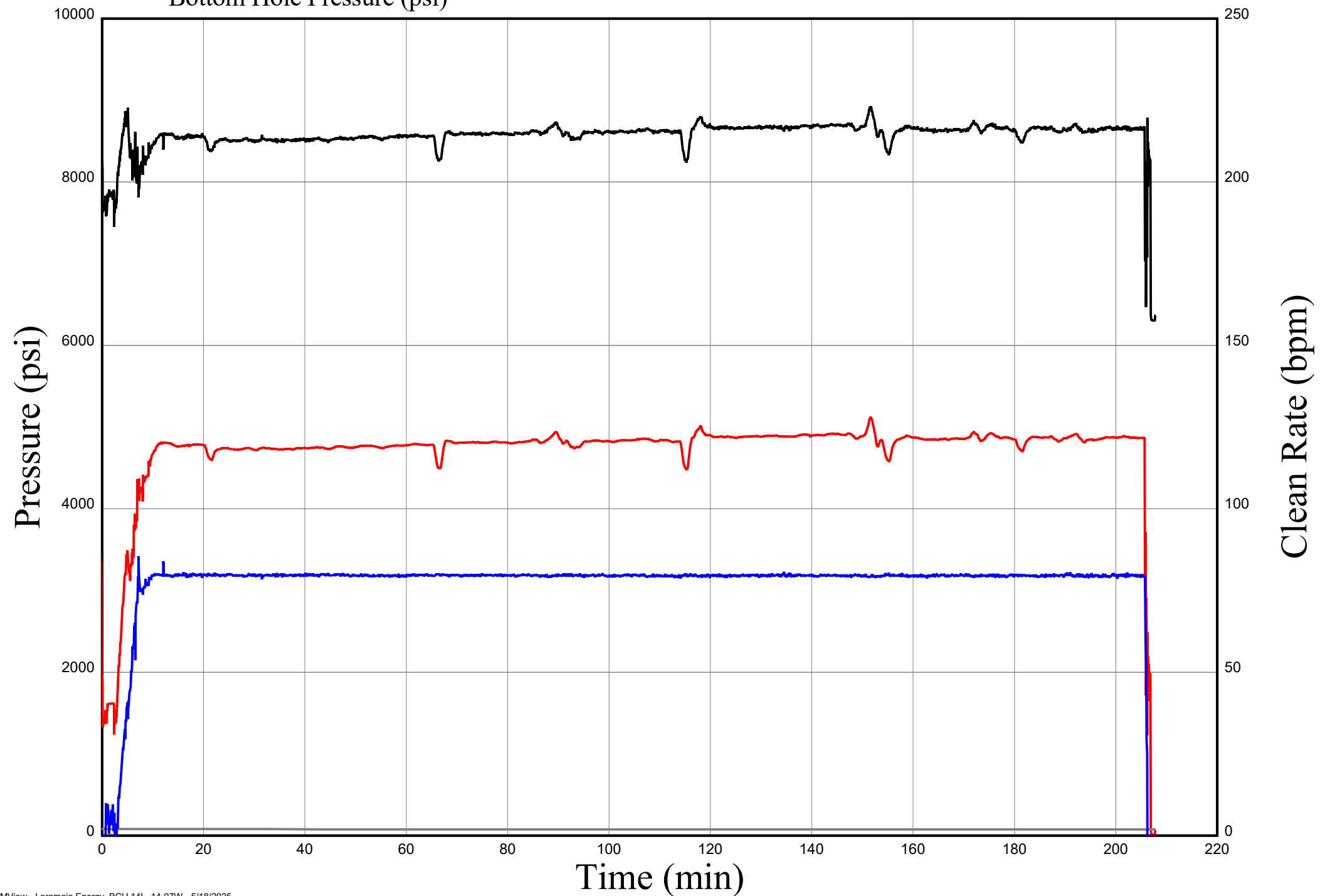
Surface and Treatment Plot, Laramie Energy BCU 14L, 14-07W, Stage 4

— Treating Pressure (psi)

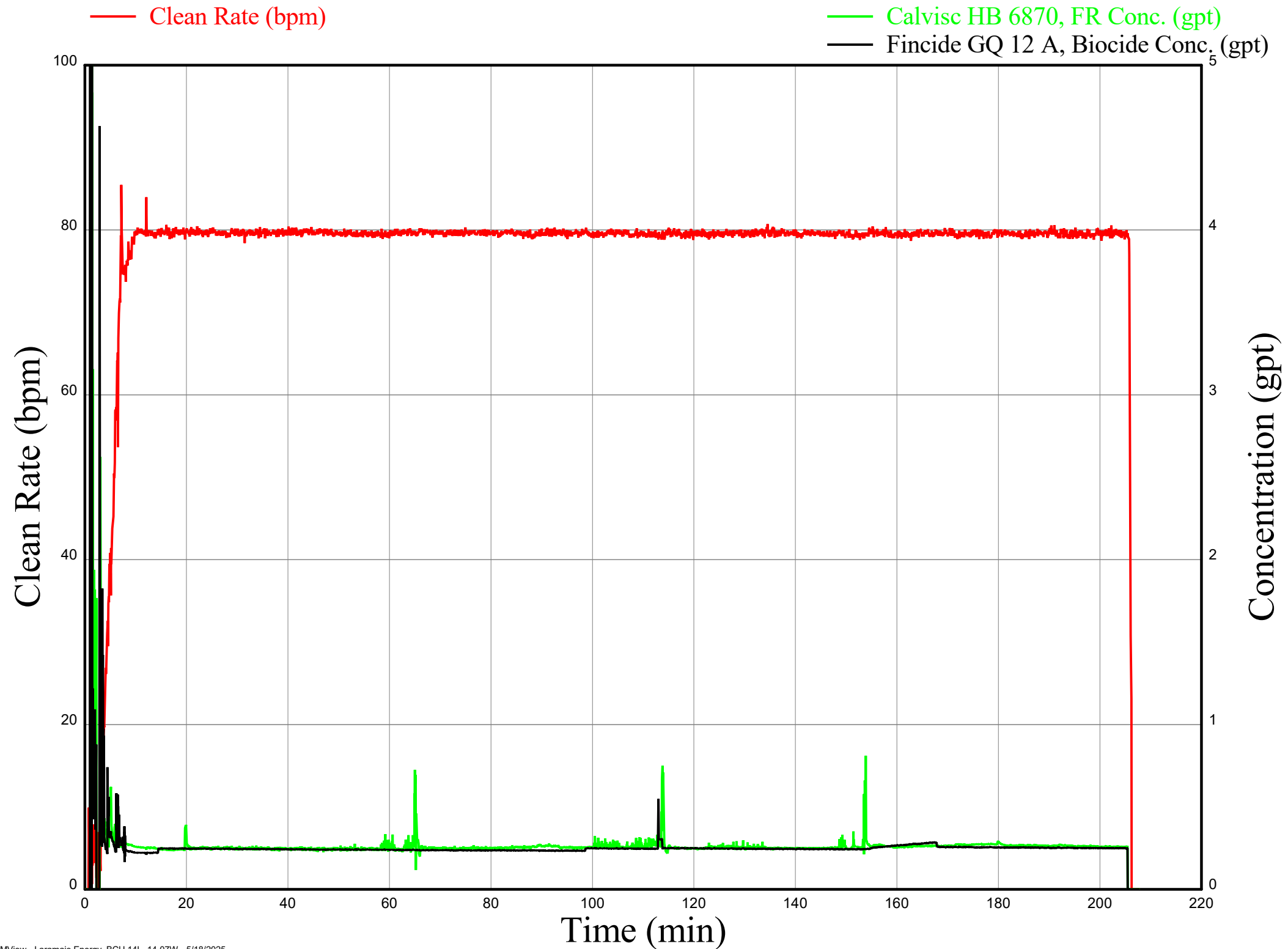
— Clean Rate (bpm)

— Backside Pressure (psi)

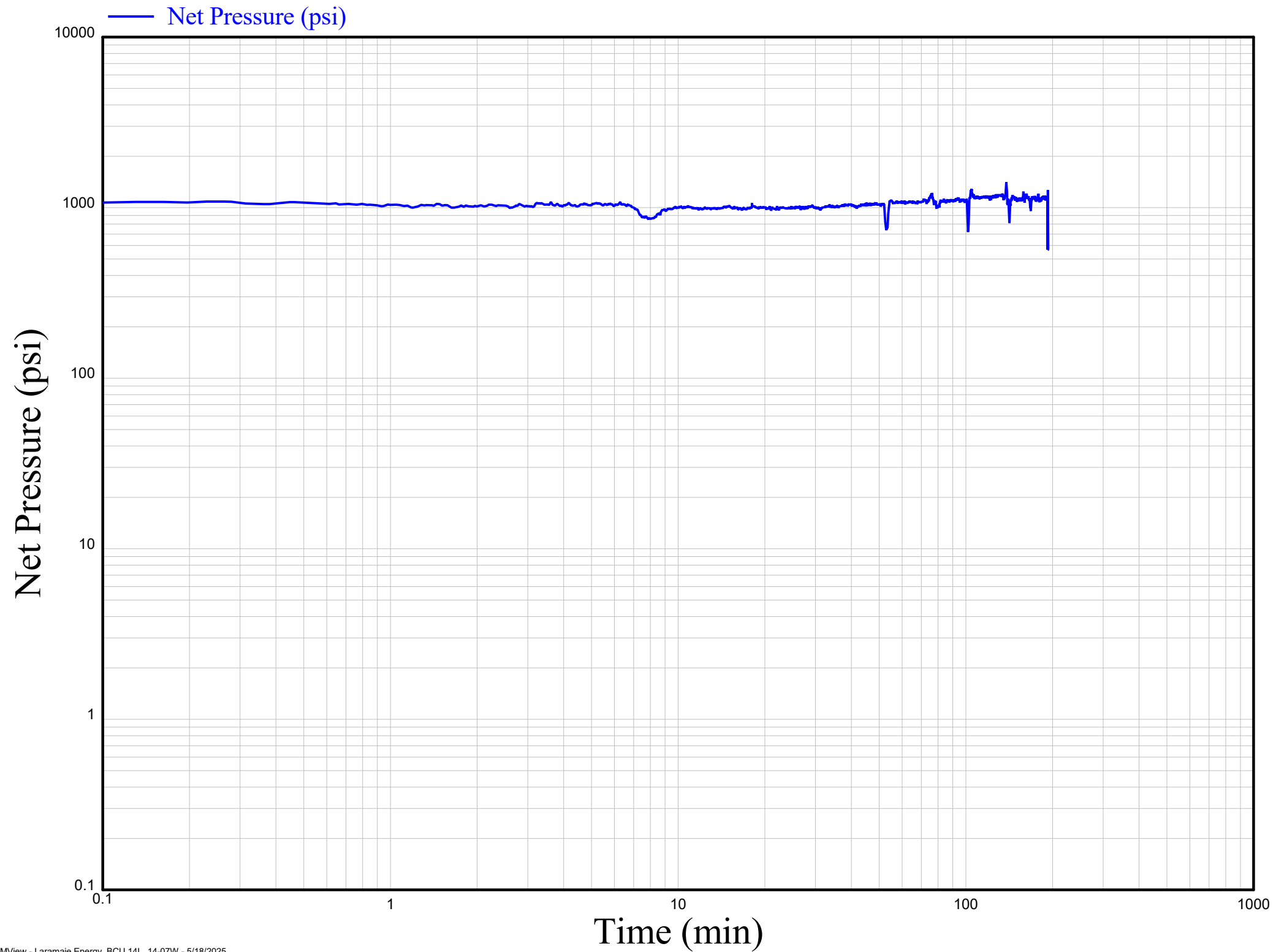
— Bottom Hole Pressure (psi)



Chemical Plot, Laramie Energy BCU 14L, 14-07W, Stage 4



NBHP Plot, Laramie Energy BCU 14L, 14-07W, Stage 4



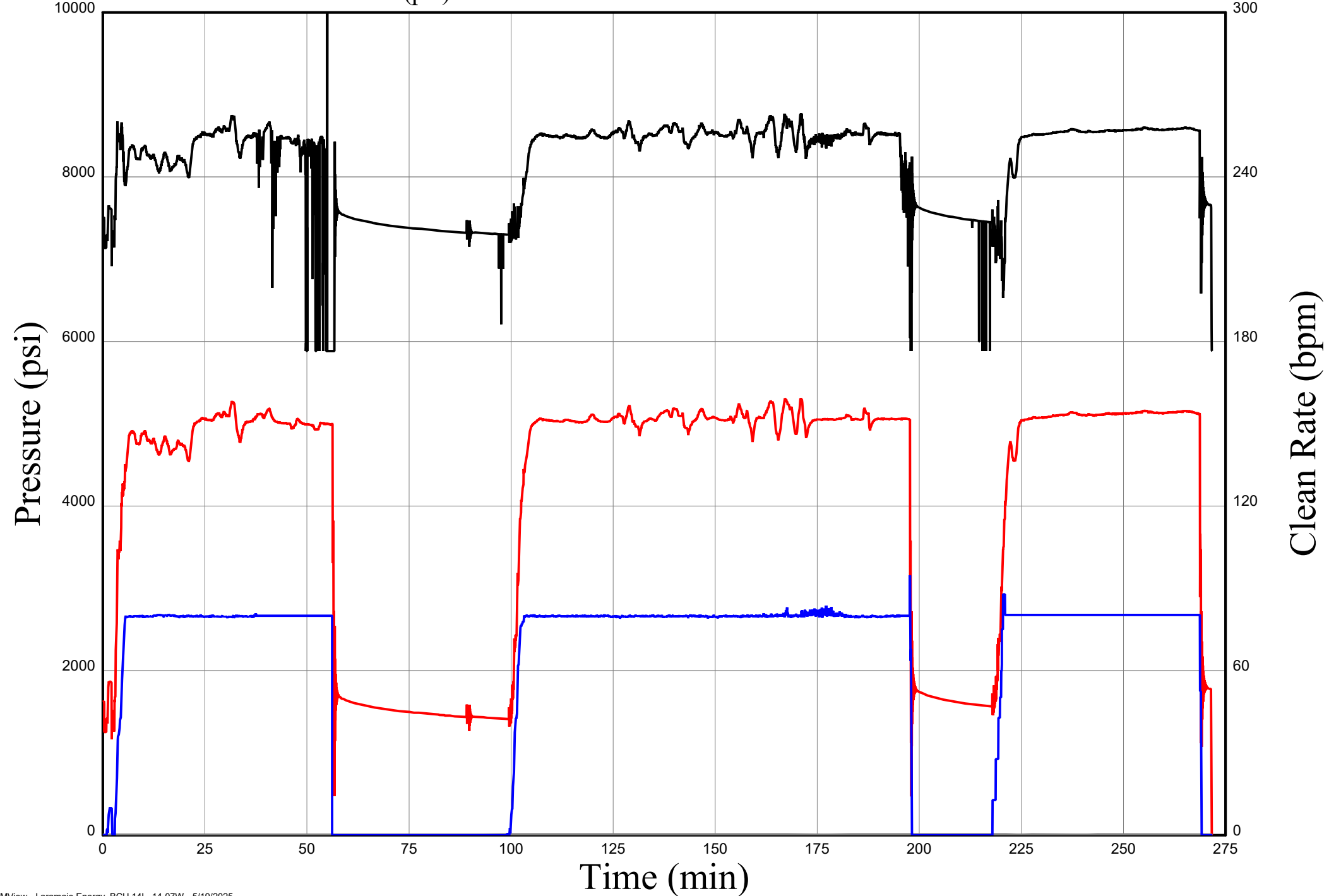
Surface and Treatment Plot, Laramie Energy BCU 14L, 14-07W, Stage 5

— Treating Pressure (psi)

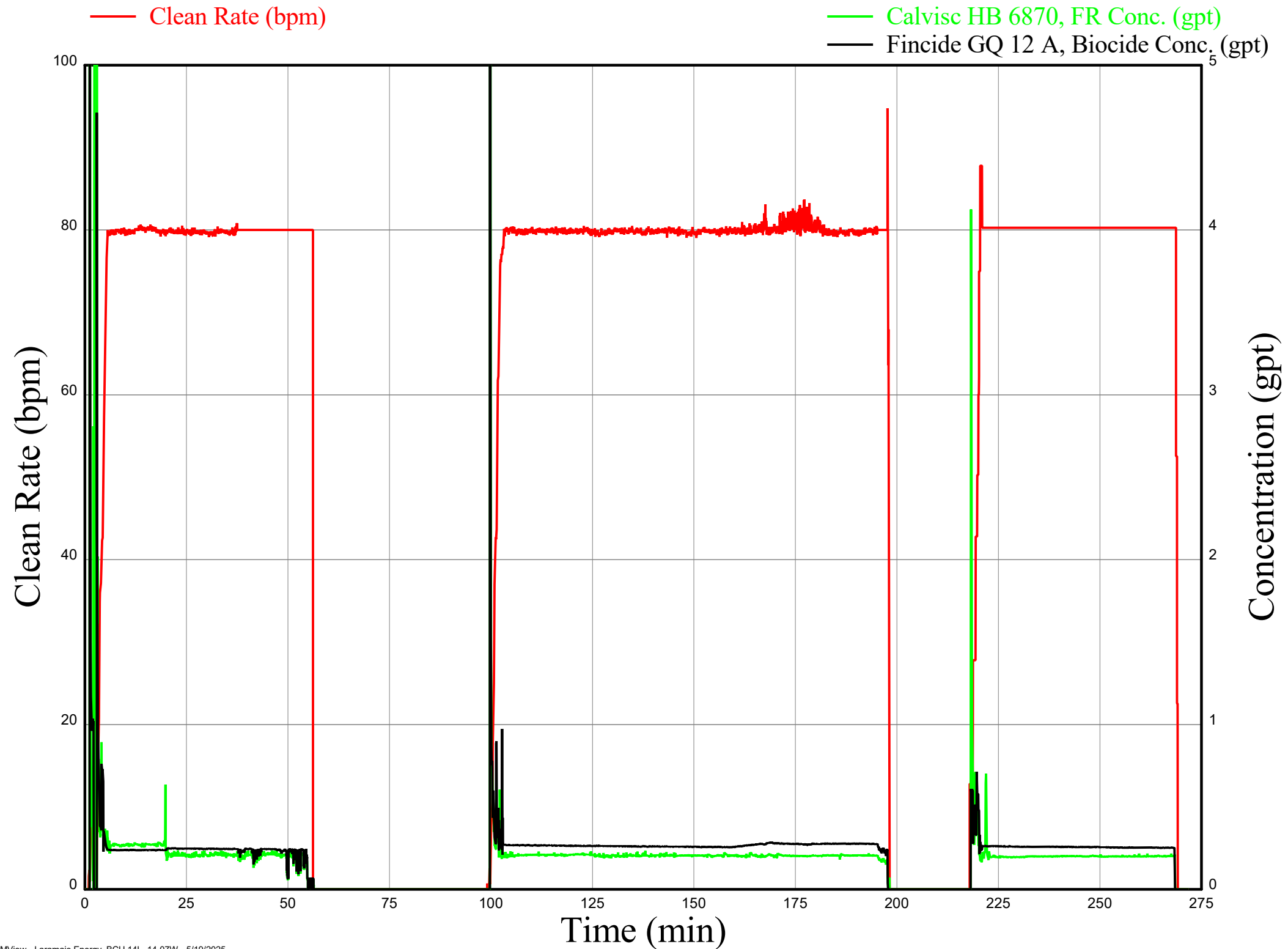
— Clean Rate (bpm)

— Backside Pressure (psi)

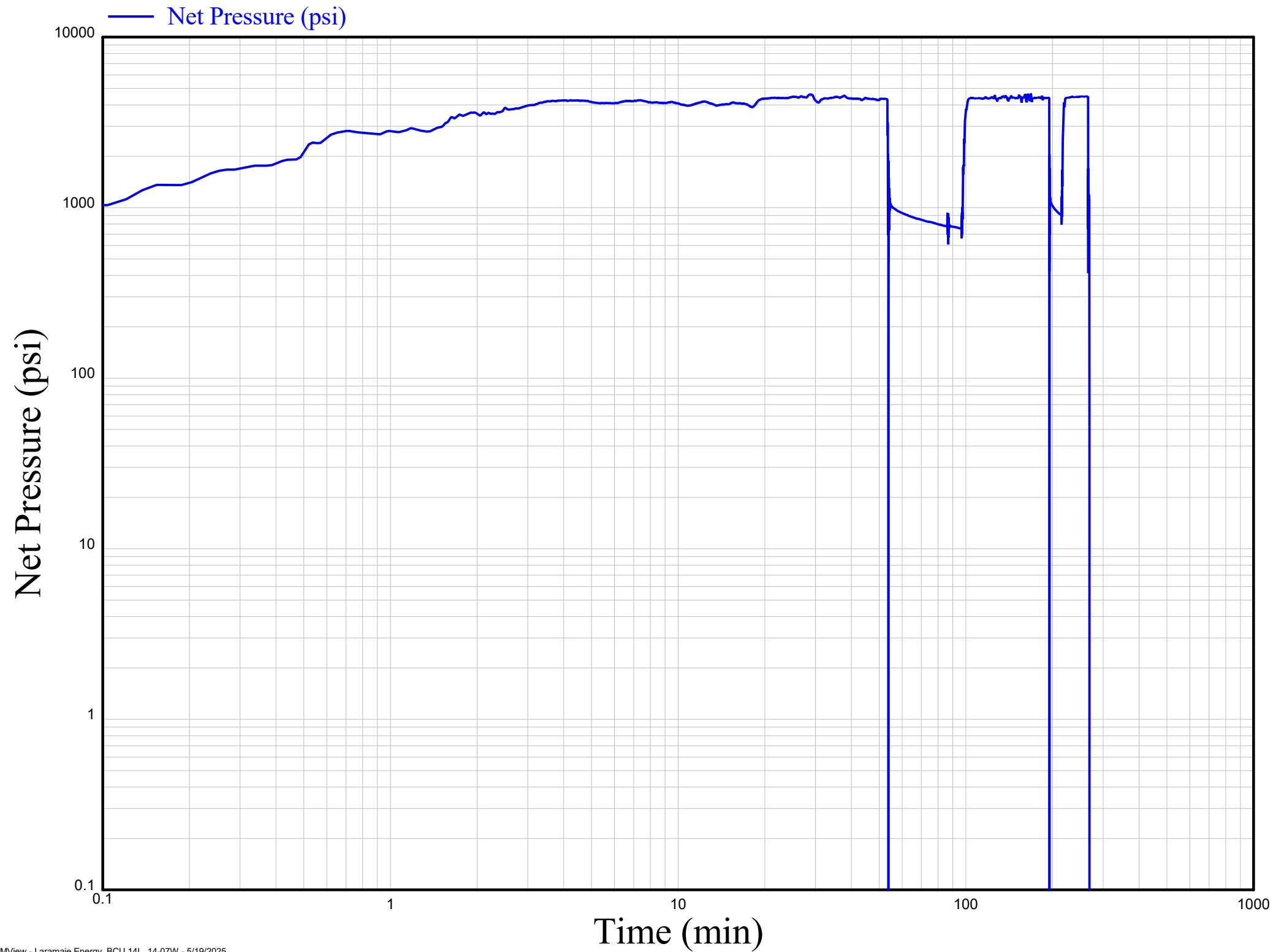
— Bottom Hole Pressure (psi)



Chemical Plot, Laramie Energy BCU 14L, 14-07W, Stage 5



NBHP Plot, Laramie Energy BCU 14L, 14-07W, Stage 5



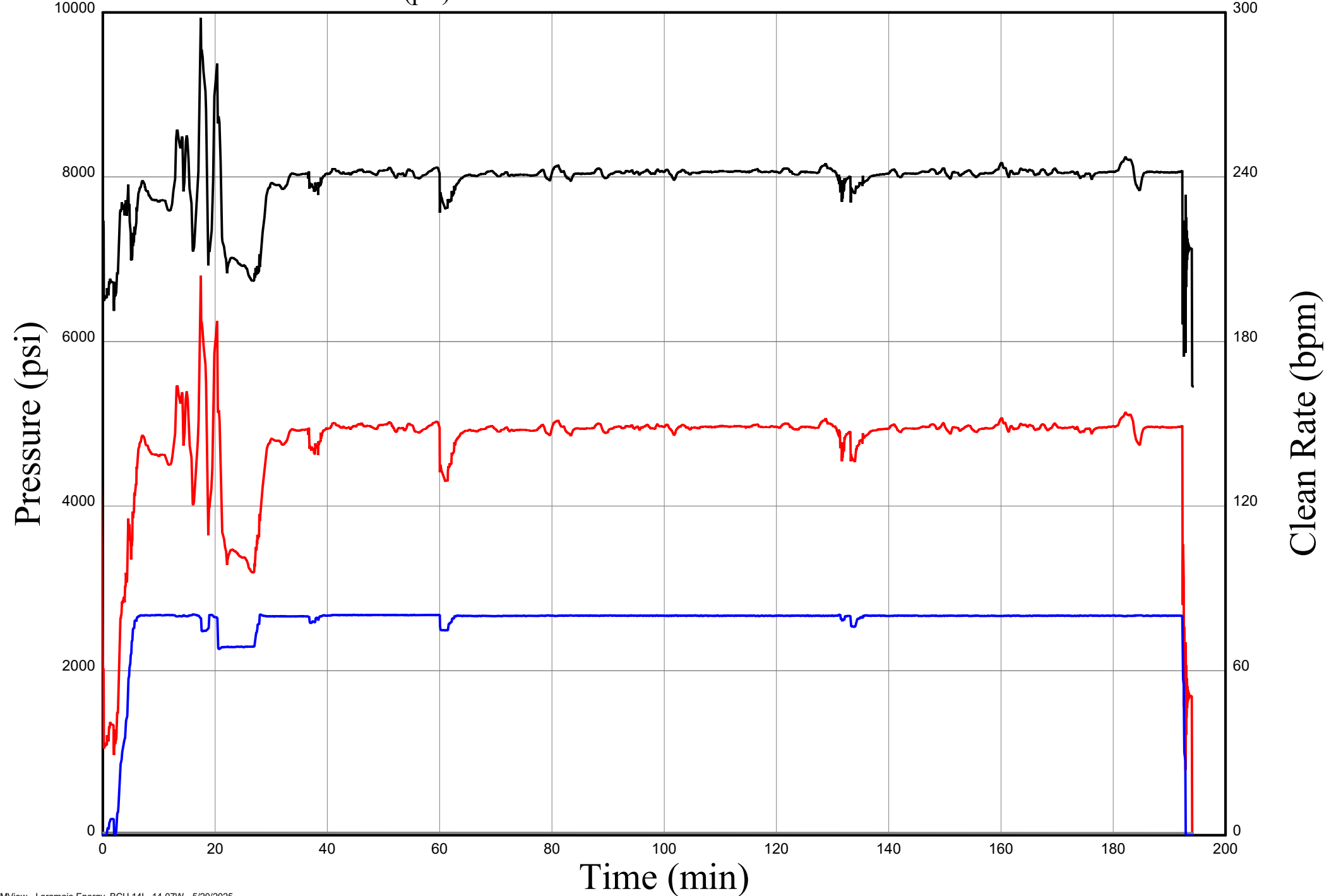
Surface and Treatment Plot, Laramie Energy BCU 14L, 14-07W, Stage 6

— Treating Pressure (psi)

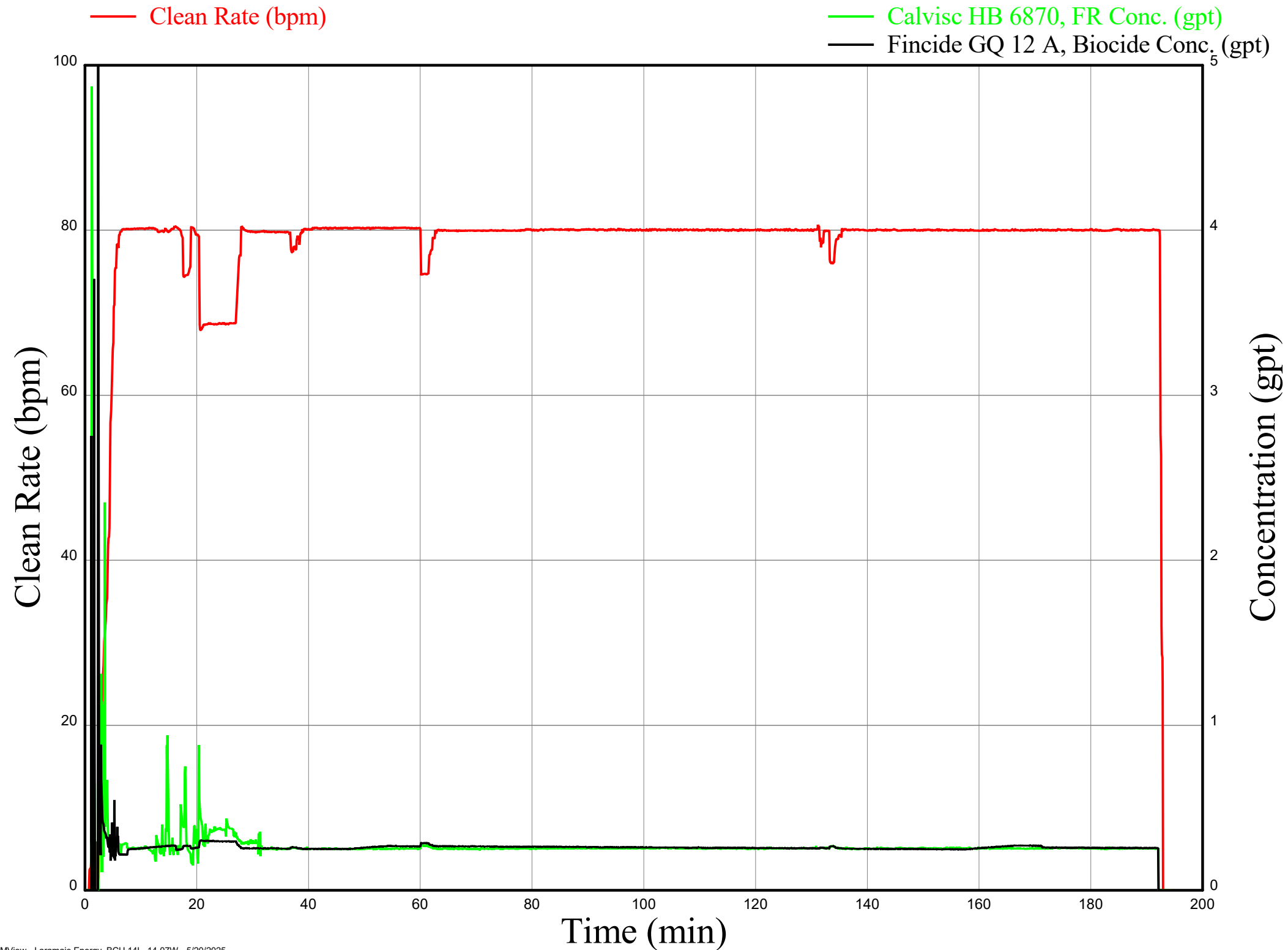
— Clean Rate (bpm)

— Backside Pressure (psi)

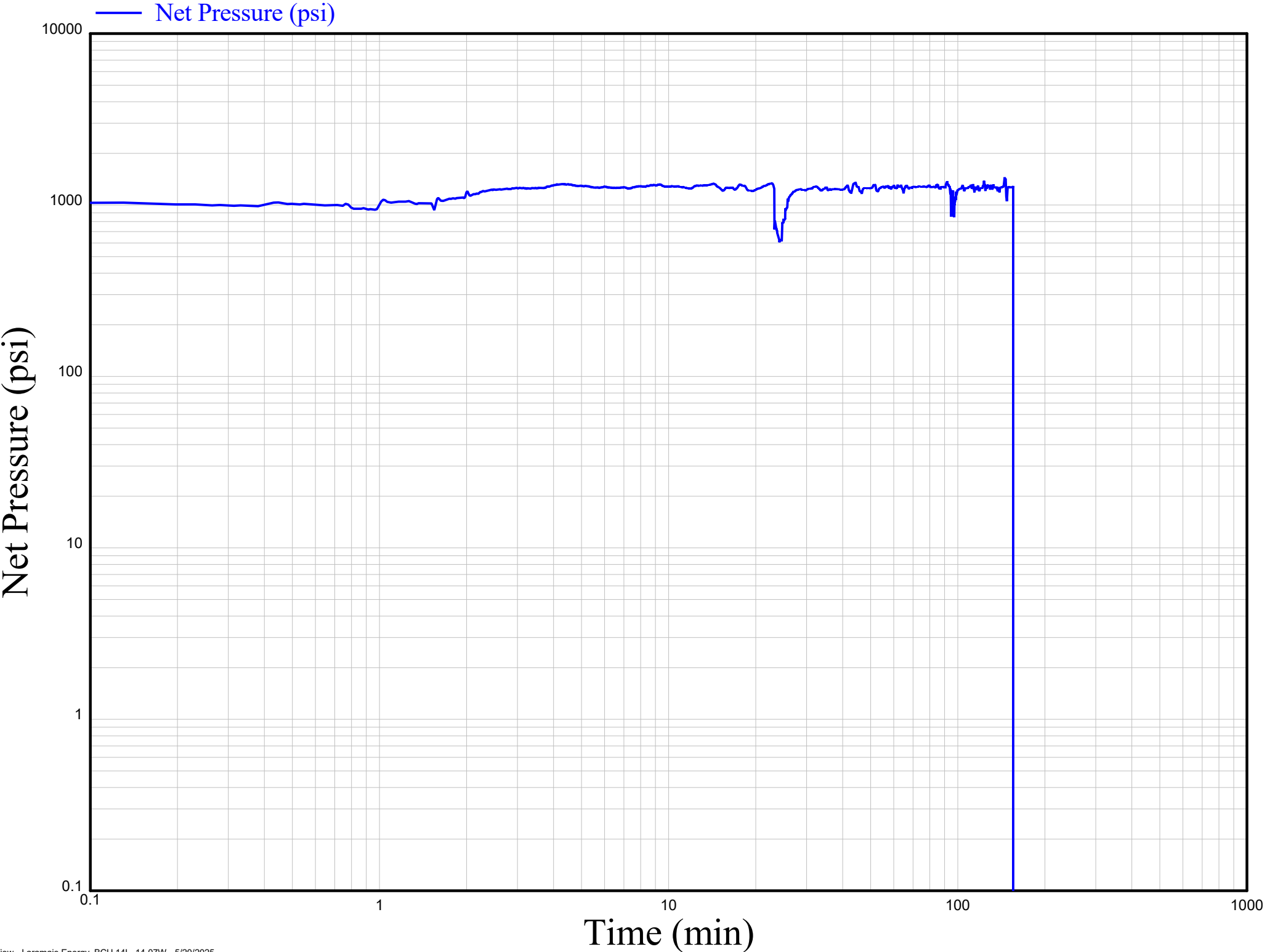
— Bottom Hole Pressure (psi)



Chemical Plot, Laramie Energy BCU 14L, 14-07W, Stage 6



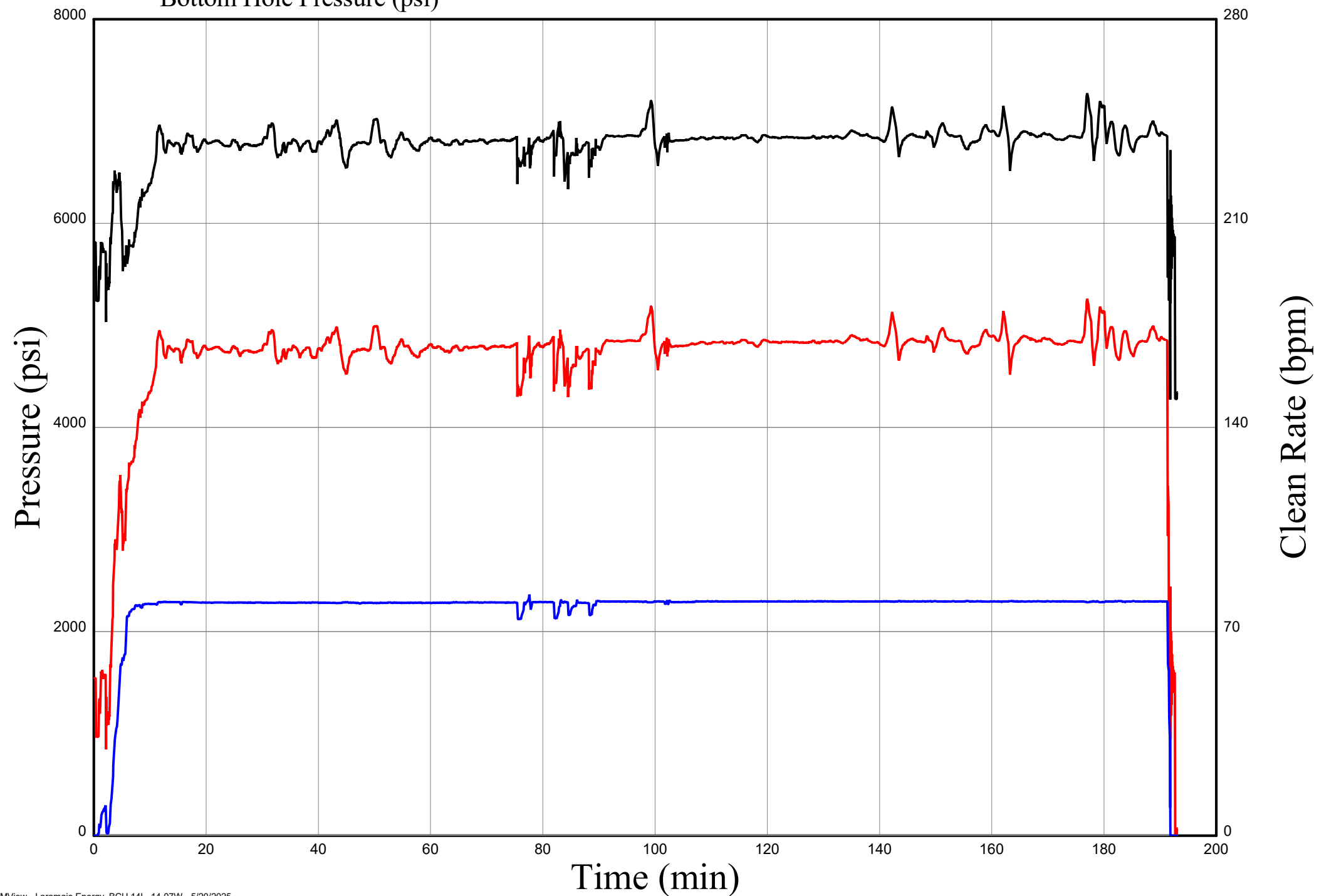
NBHP Plot, Laramie Energy BCU 14L, 14-07W, Stage 6



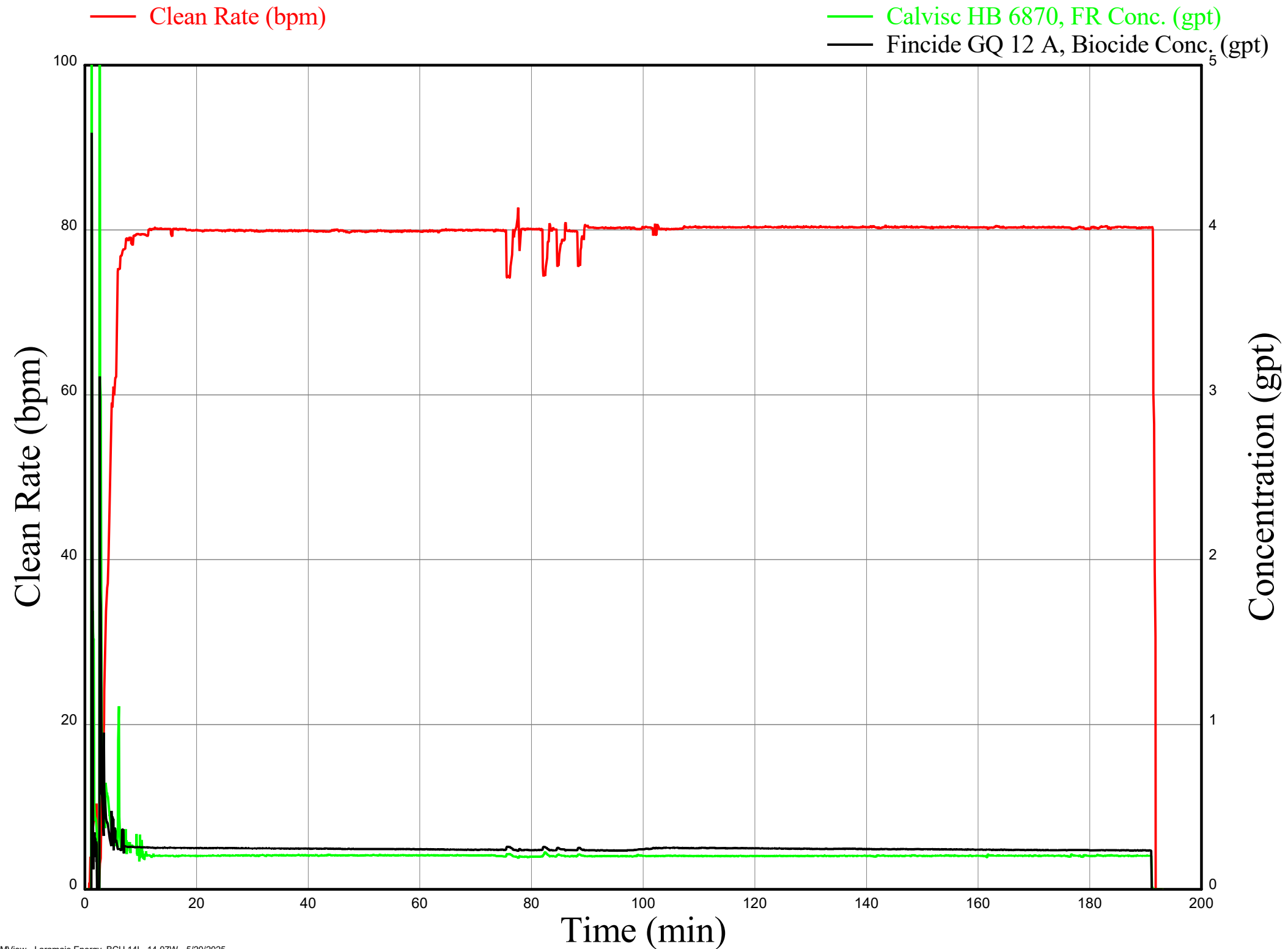
Surface and Treatment Plot, Laramie Energy BCU 14L, 14-07W, Stage 7

— Treating Pressure (psi)
— Backside Pressure (psi)
— Bottom Hole Pressure (psi)

— Clean Rate (bpm)



Chemical Plot, Laramie Energy BCU 14L, 14-07W, Stage 7



NBHP Plot, Laramie Energy BCU 14L, 14-07W, Stage 7

