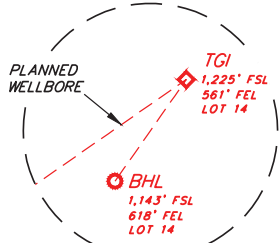


**LEGEND:**

- = SURFACE HOLE LOCATION (SHL).
- ◆ = TOP OF GAS INTERVAL (TGI).
- = BOTTOM HOLE LOCATION (BHL).
- ☆ = FEDERAL LEASE CROSSING (FLC).
- ▲ = SECTION CORNER LOCATED (NAD 83).

**NOTE:**  
Distances referenced on plat to section lines are perpendicular.

**Detail "A"**  
No Scale



**NOTE:**  
THE PLANNED TOP OF GAS INTERVAL FOR THIS WELL BEARS N55°10'32"E 3067.05' FROM THE PLANNED SURFACE HOLE LOCATION.

THE PLANNED BOTTOM HOLE LOCATION FOR THIS WELL BEARS S35°00'59"W 100.01' FROM THE PLANNED TOP OF GAS INTERVAL AND N55°50'23"E 2973.37' FROM THE PLANNED SURFACE HOLE LOCATION.

DRILL PATH HAS BEEN PROVIDED BY QB ENERGY.

PDOP = 1.4

UNGRADED GROUND ELEVATION = 6515.1

<b>NAD 83 (SURFACE HOLE LOCATION)</b>
LATITUDE = 39°56'28.24" (39.941179°)
LONGITUDE = -108°16'09.27" (-108.269241°)
<b>NAD 27 (SURFACE HOLE LOCATION)</b>
LATITUDE = 39°56'28.35" (39.941207°)
LONGITUDE = -108°16'06.96" (-108.268599°)
<b>UTM, NAD 27 (ZONE 12)</b>
N: 14516357.47' E: 2406075.44'
<b>NAD 83 (FEDERAL LEASE CROSSING 1)</b>
LATITUDE = 39°56'30.48" (39.941801°)
LONGITUDE = -108°16'05.09" (-108.268080°)
<b>NAD 27 (FEDERAL LEASE CROSSING 1)</b>
LATITUDE = 39°56'30.58" (39.941829°)
LONGITUDE = -108°16'02.78" (-108.267438°)
<b>UTM, NAD 27 (ZONE 12)</b>
N: 14516593.97' E: 2406393.92'
<b>NAD 83 (FEDERAL LEASE CROSSING 2)</b>
LATITUDE = 39°56'33.48" (39.942633°)
LONGITUDE = -108°15'59.50" (-108.266527°)
<b>NAD 27 (FEDERAL LEASE CROSSING 2)</b>
LATITUDE = 39°56'33.58" (39.942661°)
LONGITUDE = -108°15'57.19" (-108.265885°)
<b>UTM, NAD 27 (ZONE 12)</b>
N: 14516910.29' E: 2406819.99'
<b>NAD 83 (TOP OF GAS INTERVAL)</b>
LATITUDE = 39°56'45.55" (39.945986°)
LONGITUDE = -108°15'36.96" (-108.260265°)
<b>NAD 27 (TOP OF GAS INTERVAL)</b>
LATITUDE = 39°56'45.65" (39.946015°)
LONGITUDE = -108°15'34.65" (-108.259624°)
<b>UTM, NAD 27 (ZONE 12)</b>
N: 14518185.63' E: 2408537.83'
<b>NAD 83 (BOTTOM HOLE LOCATION)</b>
LATITUDE = 39°56'44.74" (39.945762°)
LONGITUDE = -108°15'37.69" (-108.260470°)
<b>NAD 27 (BOTTOM HOLE LOCATION)</b>
LATITUDE = 39°56'44.84" (39.945790°)
LONGITUDE = -108°15'35.38" (-108.259828°)
<b>UTM, NAD 27 (ZONE 12)</b>
N: 14518102.00' E: 2408483.00'

1939 Brass Cap, 1.6" High, Mound of Stones, T-Post  
Lot: 39.935312°  
Long: -108.277825°

1939 Brass Cap, 0.4" High, Mound of Stones  
Lot: 39.927978°  
Long: -108.277756°

1939 Brass Cap, 0.5" High, Mound of Stones  
Lot: 39.957276°  
Long: -108.268052°

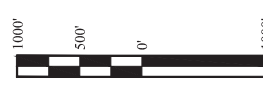
1939 Brass Cap, 0.3" High, T-Post  
Lot: 39.957335°  
Long: -108.277930°

1939 Brass Cap, 1.0" High, T-Post  
Lot: 39.949998°  
Long: -108.277906°

1938 Brass Cap, 1.0" High, T-Post  
Lot: 39.949945°  
Long: -108.258233°

1938 Brass Cap, 0.8" High, Mound of Stones, T-Post  
Lot: 39.957251°  
Long: -108.258228°

1938 Brass Cap, 1.0" High, T-Post  
Lot: 39.928059°  
Long: -108.258141°



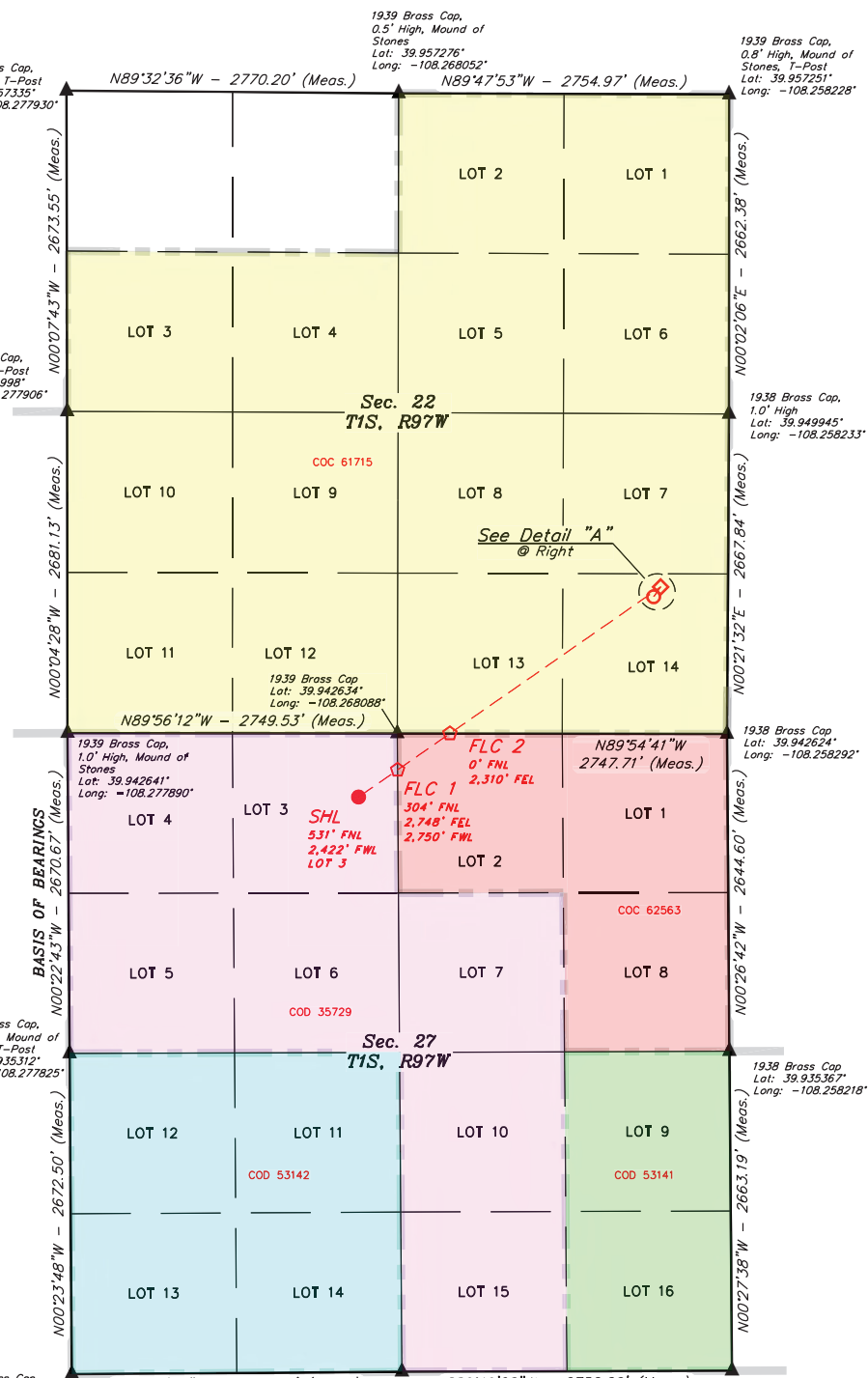
<b>NAD 83 (SURFACE HOLE LOCATION)</b>	LATITUDE = 39°56'28.24" (39.941179°)	LONGITUDE = -108°16'09.27" (-108.269241°)
<b>NAD 27 (SURFACE HOLE LOCATION)</b>	LATITUDE = 39°56'28.35" (39.941207°)	LONGITUDE = -108°16'06.96" (-108.268599°)
<b>UTM, NAD 27 (ZONE 12)</b>	N: 14516357.47' E: 2406075.44'	
<b>NAD 83 (FEDERAL LEASE CROSSING 1)</b>	LATITUDE = 39°56'30.48" (39.941801°)	LONGITUDE = -108°16'05.09" (-108.268080°)
<b>NAD 27 (FEDERAL LEASE CROSSING 1)</b>	LATITUDE = 39°56'30.58" (39.941829°)	LONGITUDE = -108°16'02.78" (-108.267438°)
<b>UTM, NAD 27 (ZONE 12)</b>	N: 14516593.97' E: 2406393.92'	
<b>NAD 83 (FEDERAL LEASE CROSSING 2)</b>	LATITUDE = 39°56'33.48" (39.942633°)	LONGITUDE = -108°15'59.50" (-108.266527°)
<b>NAD 27 (FEDERAL LEASE CROSSING 2)</b>	LATITUDE = 39°56'33.58" (39.942661°)	LONGITUDE = -108°15'57.19" (-108.265885°)
<b>UTM, NAD 27 (ZONE 12)</b>	N: 14516910.29' E: 2406819.99'	
<b>NAD 83 (TOP OF GAS INTERVAL)</b>	LATITUDE = 39°56'45.55" (39.945986°)	LONGITUDE = -108°15'36.96" (-108.260265°)
<b>NAD 27 (TOP OF GAS INTERVAL)</b>	LATITUDE = 39°56'45.65" (39.946015°)	LONGITUDE = -108°15'34.65" (-108.259624°)
<b>UTM, NAD 27 (ZONE 12)</b>	N: 14518185.63' E: 2408537.83'	
<b>NAD 83 (BOTTOM HOLE LOCATION)</b>	LATITUDE = 39°56'44.74" (39.945762°)	LONGITUDE = -108°15'37.69" (-108.260470°)
<b>NAD 27 (BOTTOM HOLE LOCATION)</b>	LATITUDE = 39°56'44.84" (39.945790°)	LONGITUDE = -108°15'35.38" (-108.259828°)
<b>UTM, NAD 27 (ZONE 12)</b>	N: 14518102.00' E: 2408483.00'	

**BASIS OF BEARINGS**  
BEARINGS ARE A BASED ASSUMPTION THAT THE WEST LINE OF THE NORTHWEST 1/4 OF SECTION 27 BEARS N00°22'43"W. MONUMENTS DESCRIBED HEREON.

**BASIS OF ELEVATION**  
BENCH MARK (MR 25) LOCATED IN THE NE 1/4 OF SECTION 25, T2S, R99W, 6th P.M., TAKEN FROM THE YANKEE GULCH QUADRANGLE, COLORADO, RIO BLANCO, 7.5 MINUTE SERIES (TOPOGRAPHIC MAP) PUBLISHED BY THE UNITED STATES DEPARTMENT OF THE INTERIOR, GEOLOGICAL SURVEY. SAID ELEVATION IS MARKED AS BEING 6971 FEET.



**UELS, LLC**  
Corporate Office \* 85 South 200 East  
Vernal, UT 84078 \* (435) 789-1017



**CERTIFICATION**  
THIS IS TO CERTIFY THAT THE ABOVE PLAT WAS PREPARED FROM THE NOTES OF ACTUAL SURVEYS MADE BY ME OR UNDER MY SUPERVISION AND THAT THE SAME ARE TRUE AND CORRECT TO THE BEST OF MY KNOWLEDGE AND BELIEF.

*Handwritten Signature*  
REGISTERED PROFESSIONAL SURVEYOR  
STATE OF COLORADO  
No. 20-25

REV: 6 06-20-25 D.P. (UPDATE WELLBORE)

**QB ENERGY**  
RNPB B27 FED 25B-22 197  
LOT 3, SECTION 27, T1S, R97W, 6th P.M.  
RIO BLANCO COUNTY, COLORADO

SURVEYED BY	BART HUNTING, J.L.	09-12-22	SCALE
DRAWN BY	T.L.L.	11-08-22	1" = 1000'

**WELL LOCATION PLAT**