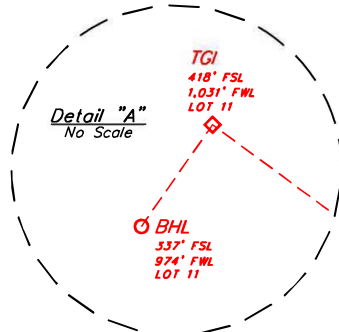


LEGEND:

- = SURFACE HOLE LOCATION (SHL).
- ◇ = TOP OF GAS INTERVAL (TGI).
- = BOTTOM HOLE LOCATION (BHL).
- ⬠ = FEDERAL LEASE CROSSING (FLC).
- ▲ = SECTION CORNER LOCATED (NAD 83).

NOTE:
Distances referenced on plat to section lines are perpendicular.



NOTE:
THE PLANNED TOP OF GAS INTERVAL FOR THIS WELL BEARS N54°04'21"W 1760.77' FROM THE PLANNED SURFACE HOLE LOCATION.

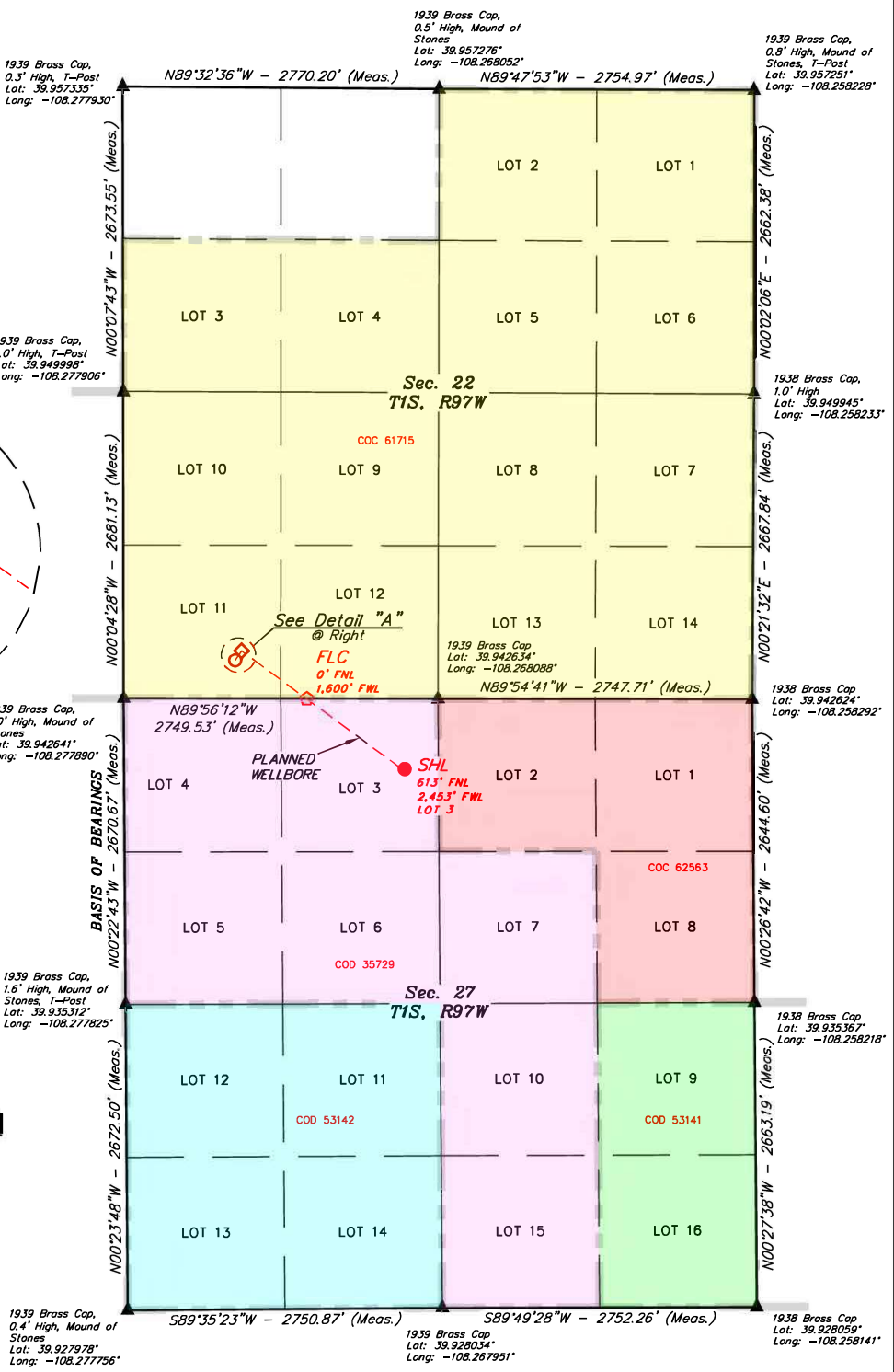
THE PLANNED BOTTOM HOLE LOCATION FOR THIS WELL BEARS S35°00'58"W 100.01' FROM THE PLANNED TOP OF GAS INTERVAL AND N57°19'33"W 1762.02' FROM THE PLANNED SURFACE HOLE LOCATION.

DRILL PATH HAS BEEN PROVIDED BY QB ENERGY.

PDOP = 1.4

UNGRADED GROUND ELEVATION = 6524.5'

NAD 83 (SURFACE HOLE LOCATION)
LATITUDE = 39°56'27.43" (39.940953°)
LONGITUDE = -108°16'08.87" (-108.269131°)
NAD 27 (SURFACE HOLE LOCATION)
LATITUDE = 39°56'27.53" (39.940981°)
LONGITUDE = -108°16'06.56" (-108.268489°)
UTM, NAD 27 (ZONE 12)
N: 14516276.00' E: 2406108.69'
NAD 83 (FEDERAL LEASE CROSSING)
LATITUDE = 39°56'33.49" (39.942637°)
LONGITUDE = -108°16'19.87" (-108.272187°)
NAD 27 (FEDERAL LEASE CROSSING)
LATITUDE = 39°56'33.59" (39.942665°)
LONGITUDE = -108°16'17.56" (-108.271544°)
UTM, NAD 27 (ZONE 12)
N: 14516863.30' E: 2405233.35'
NAD 83 (TOP OF GAS INTERVAL)
LATITUDE = 39°56'37.63" (39.943787°)
LONGITUDE = -108°16'27.18" (-108.274215°)
NAD 27 (TOP OF GAS INTERVAL)
LATITUDE = 39°56'37.73" (39.943815°)
LONGITUDE = -108°16'24.86" (-108.273573°)
UTM, NAD 27 (ZONE 12)
N: 14517264.63' E: 2404651.83'
NAD 83 (BOTTOM HOLE LOCATION)
LATITUDE = 39°56'36.82" (39.943562°)
LONGITUDE = -108°16'27.91" (-108.274420°)
NAD 27 (BOTTOM HOLE LOCATION)
LATITUDE = 39°56'36.92" (39.943590°)
LONGITUDE = -108°16'25.60" (-108.273778°)
UTM, NAD 27 (ZONE 12)
N: 14517181.00' E: 2404597.00'



BASIS OF BEARINGS
BEARINGS ARE A BASED ASSUMPTION THAT THE WEST LINE OF THE NORTHWEST 1/4 OF SECTION 27 BEARS N00°22'43"W. MONUMENTS DESCRIBED HEREON.

BASIS OF ELEVATION
BENCH MARK (MR 25) LOCATED IN THE NE 1/4 OF SECTION 25, T2S, R99W, 6th P.M., TAKEN FROM THE YANKEE GULCH QUADRANGLE, COLORADO, RIO BLANCO, 7.5 MINUTE SERIES (TOPOGRAPHIC MAP) PUBLISHED BY THE UNITED STATES DEPARTMENT OF THE INTERIOR, GEOLOGICAL SURVEY. SAID ELEVATION IS MARKED AS BEING 6971 FEET.



UELS, LLC
Corporate Office * 85 South 200 East
Vernal, UT 84078 * (435) 789-1017



CERTIFICATE OF ACCURACY

THIS IS TO CERTIFY THAT THE ABOVE PLAT WAS PREPARED FROM FIELD NOTES OF ACTUAL SURVEYS MADE BY ME UNDER MY SUPERVISION AND THAT THE SAME ARE TRUE AND CORRECT TO THE BEST OF MY KNOWLEDGE AND BELIEF.

Handwritten Signature

REGISTERED PROFESSIONAL SURVEYOR
REGISTRATION NO. 100784 AND SURV. NO. 100784
STATE OF COLORADO 06-20-25

REV: 6 06-20-25 D.P. (UPDATE WELLBORE)

QB ENERGY

RNPB B27 FED 11A-22 197
LOT 3, SECTION 27, T1S, R97W, 6th P.M.
RIO BLANCO COUNTY, COLORADO

SURVEYED BY	BART HUNTING, J.L.	09-12-22	SCALE
DRAWN BY	T.L.L.	11-08-22	1" = 1000'

WELL LOCATION PLAT