



Sampling Photographic Log

Citation McCormick (31-3) #1H

12/19/2024 13:35
+38.863256,-102.873278

McCormick (31-3) #1H



Blocks and wood debris
removed from site.

Description:

Current site condition
(Northwest view)

6/23/25, 1:12 PM
+38.863562,-102.873726
297° NW
Cheyenne County
McCormick (31-3) 1H



Description:

Recontour bare spot ~200 ft. north of former wellhead

Erosion control Berm construction

6/23/25, 1:21 PM
+38.862487,-102.874938
225° SW
Cheyenne County
McCormick (31-3) 1H



Description:

Entrance road on site
Repaired with soil
In area of road
Erosion

6/25/25, 12:33 PM
+38.863273,-102.873491
315° NW
Cheyenne County
McCormick (31-3) 1H.

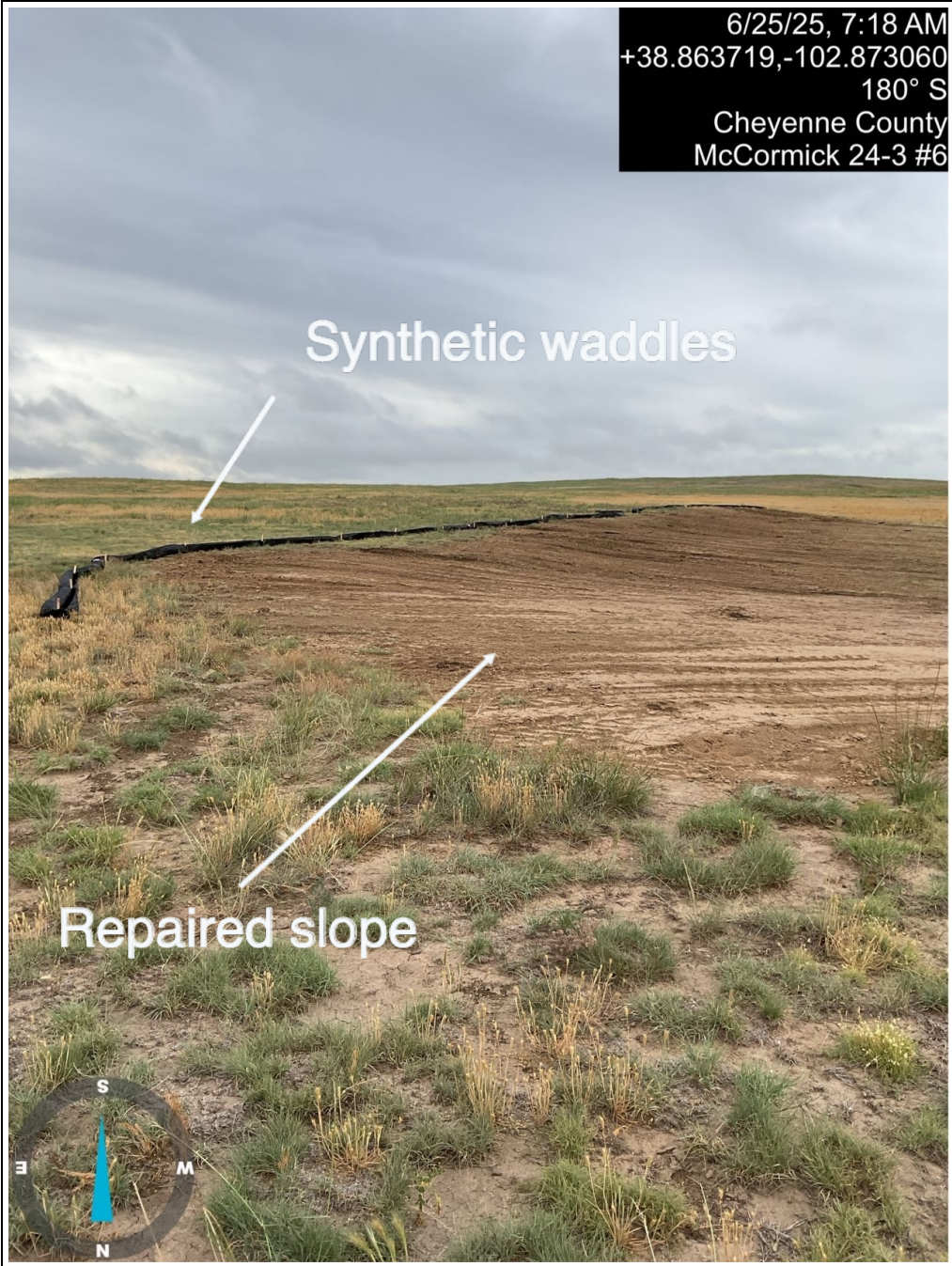
Soil spread over areas with sparse vegetation



Description:

Soil spread out
over bare location
of former wellhead

6/25/25, 7:18 AM
+38.863719,-102.873060
180° S
Cheyenne County
McCormick 24-3 #6



Synthetic waddles

Repaired slope

Description:

Cut in slope repaired
With soil and synthetic
Waddles in place
For erosion
Control

6/25/25, 7:19 AM
+38.863065,-102.873054
352° N
Cheyenne County
McCormick 24-3 #6



Description:

Cut in slope repaired
Waddles in place

6/25/25, 7:58 AM
+38.862453,-102.874961
225° SW
Cheyenne County
McCormick 24-3 #6



Description:

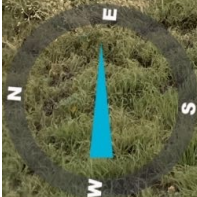
Road gulley
Repaired

6/25/25, 7:56 AM
+38.863445,-102.874006
85° E
Cheyenne County
McCormick 24-3 #6

Repaired cut slope



Description:



6/26/25, 2:45 PM
+38.863353,-102.873314
246° SW
Cheyenne County



Description:
Soil spread over
former pumpjack
area



6/26/25, 2:45 PM
+38.863726,-102.873626
242° SW
Cheyenne County

Description:

Soil spread over bare
area N of pumpjack
and erosion control
berm