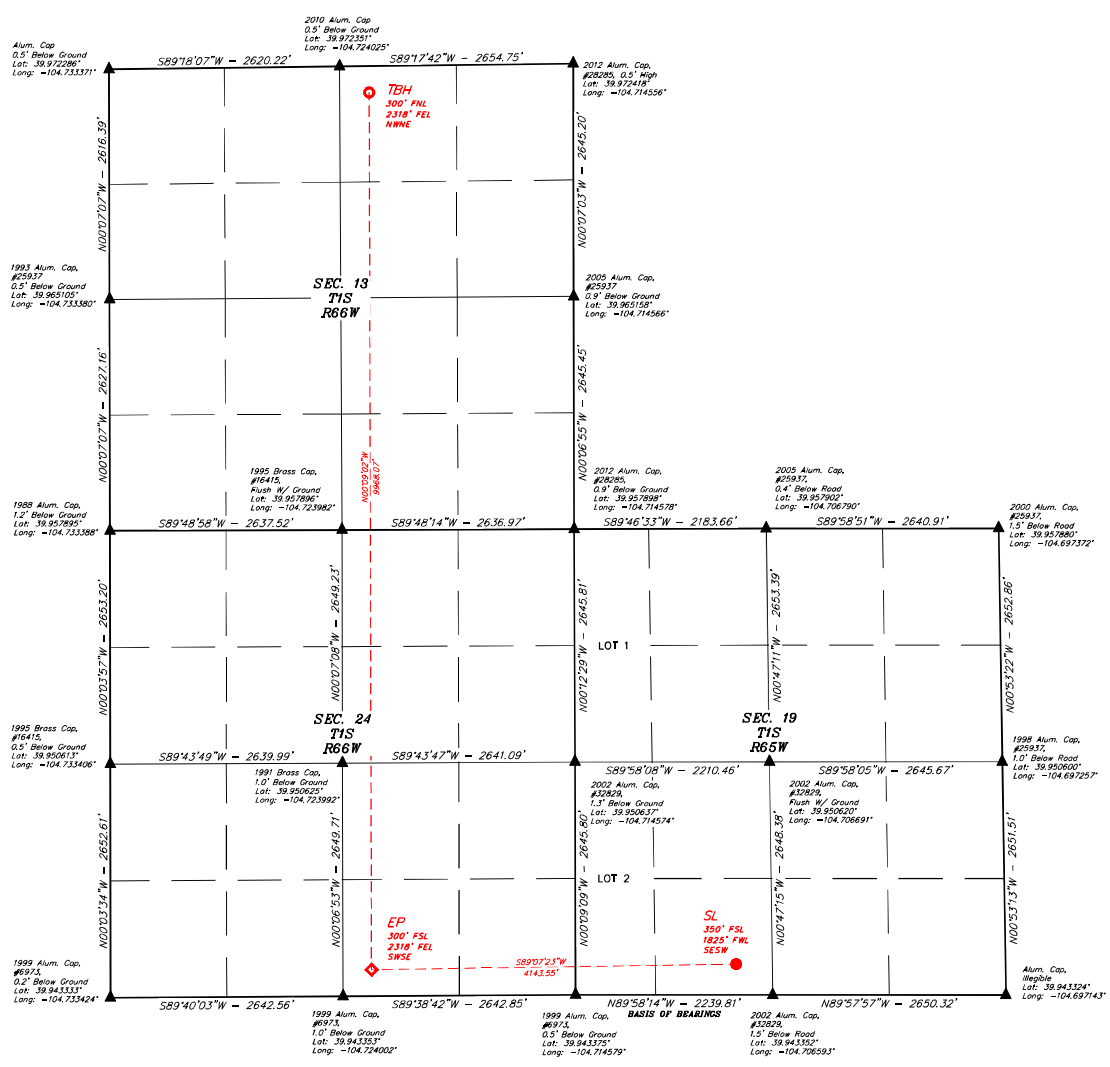


- LEGEND:**
- SURFACE LOCATION (SL)
 - ENTRY POINT (EP)
 - TARGET BOTTOM HOLE (TBH)
 - ▲ SECTION CORNERS LOCATED (NAD 83)

NOTE:
Distances referenced on plat to section lines are perpendicular.



EXISTING GROUND ELEVATION = 5142.8'		
NAD 83 (SURFACE LOCATION)	NAD 83 (ENTRY POINT)	NAD 83 (TARGET BOTTOM HOLE)
LATITUDE = 39°26'39.54" (39.444179°)	LATITUDE = 39°26'39.00" (39.444179°)	LATITUDE = 39°26'33.33" (39.441536°)
LONGITUDE = -104°42'29.06" (-104.708071°)	LONGITUDE = -104°43'22.24" (-104.722844°)	LONGITUDE = -104°43'22.18" (-104.722829°)
STATE PLANE NAD 83 (CO. NORTH)	STATE PLANE NAD 83 (CO. NORTH)	STATE PLANE NAD 83 (CO. NORTH)
N: 1232552.50' E: 3232009.90'	N: 1232567.75' E: 3231789.44'	N: 1232632.82' E: 3231515.85'

BASIS OF ELEVATION
OPUS SOLUTION GENERATED NAVD 88

UELS, LLC
Corporate Office * 85 South 200 East
Vernal, UT 84078 * (435) 789-1017



CERTIFICATE OF REGISTRATION
THIS IS TO CERTIFY THAT THE ABOVE NOTED SURVEY WAS MADE AND THE NOTES OF ACTUAL SURVEYS MADE AND THAT THE SAME ARE TRUE AND CORRECT TO THE BEST OF MY KNOWLEDGE AND BELIEF.
GREG WEIMER
REGISTERED LAND SURVEYOR
NO. 28268
STATE OF COLORADO

POCO OPERATING
CONNER 24-13-1CDH
SE 1/4 SW 1/4, SECTION 19, T1S, R65W, 6th P.M.
ADAMS COUNTY, COLORADO

SURVEYED BY	GREG WEIMER, O.R.	06-15-22	SCALE
DRAWN BY	T.L.E.	04-09-23	1" = 1000'

WELL LOCATION PLAT