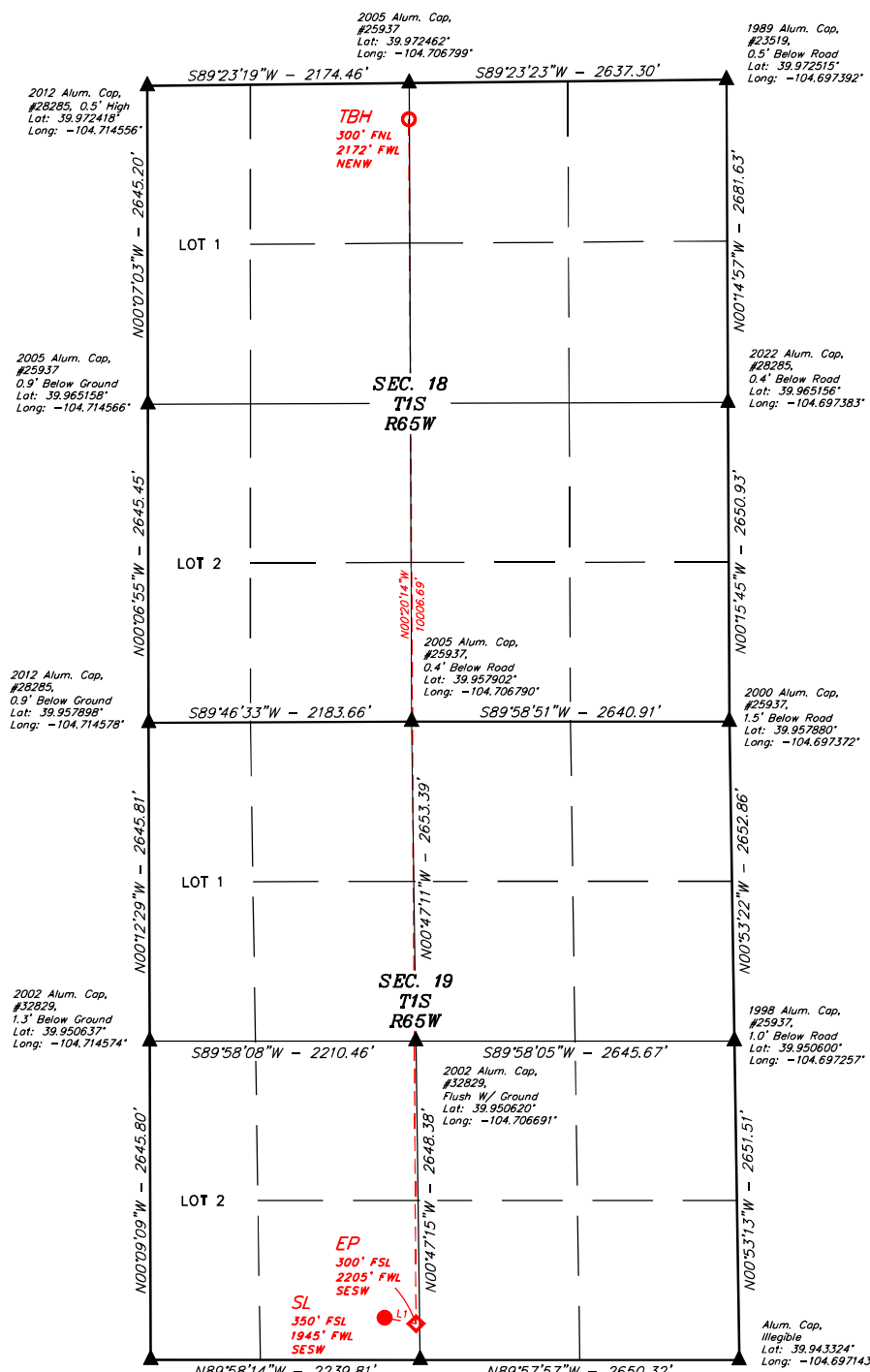


LEGEND:

- = SURFACE LOCATION (SL).
- ◆ = ENTRY POINT (EP).
- = TARGET BOTTOM HOLE (TBH).
- ▲ = SECTION CORNERS LOCATED. (NAD 83)

NOTE:
Distances referenced on plat to section lines are perpendicular.



LINE TABLE		
LINE	DIRECTION	LENGTH
L1	S79°05'39"E	264.95'

PDOP = 1.4



EXISTING GROUND ELEVATION = 5142.6'		
NAD 83 (SURFACE LOCATION)	NAD 83 (ENTRY POINT)	NAD 83 (TARGET BOTTOM HOLE)
LATITUDE = 39°56'39.54" (39.944316°)	LATITUDE = 39°56'39.03" (39.944176°)	LATITUDE = 39°58'17.90" (39.971639°)
LONGITUDE = -104°42'27.51" (-104.707643°)	LONGITUDE = -104°42'24.18" (-104.706716°)	LONGITUDE = -104°42'24.51" (-104.706809°)
STATE PLANE NAD 83 (CO. NORTH)	STATE PLANE NAD 83 (CO. NORTH)	STATE PLANE NAD 83 (CO. NORTH)
N: 1223555.20' E: 3222159.95'	N: 1223506.56' E: 3222420.32'	N: 1223509.91' E: 3222304.83'

CERTIFICATE OF REGISTRATION
THIS IS TO CERTIFY THAT THE ABOVE IS A TRUE AND CORRECT COPY OF THE ORIGINAL SURVEY NOTES OF ACTUAL SURVEYS MADE BY ME OR UNDER MY SUPERVISION AND THAT THE SAME ARE TRUE AND CORRECT TO THE BEST OF MY KNOWLEDGE AND BELIEF.

REG. SURVEYOR LAND SURVEYOR
REGISTRATION NO. 28285
STATE OF COLORADO
25

BASIS OF ELEVATION
OPUS SOLUTION GENERATED NAVD 88



UELS, LLC
Corporate Office * 85 South 200 East
Vernal, UT 84078 * (435) 789-1017



POCO OPERATING
CONNER 19-18-4NBH
SE 1/4 SW 1/4, SECTION 19, T1S, R65W, 6th P.M.
ADAMS COUNTY, COLORADO

SURVEYED BY	GREG WEIMER, O.R.	06-15-22	SCALE
DRAWN BY	T.L.L.	04-09-25	1" = 1000'

WELL LOCATION PLAT