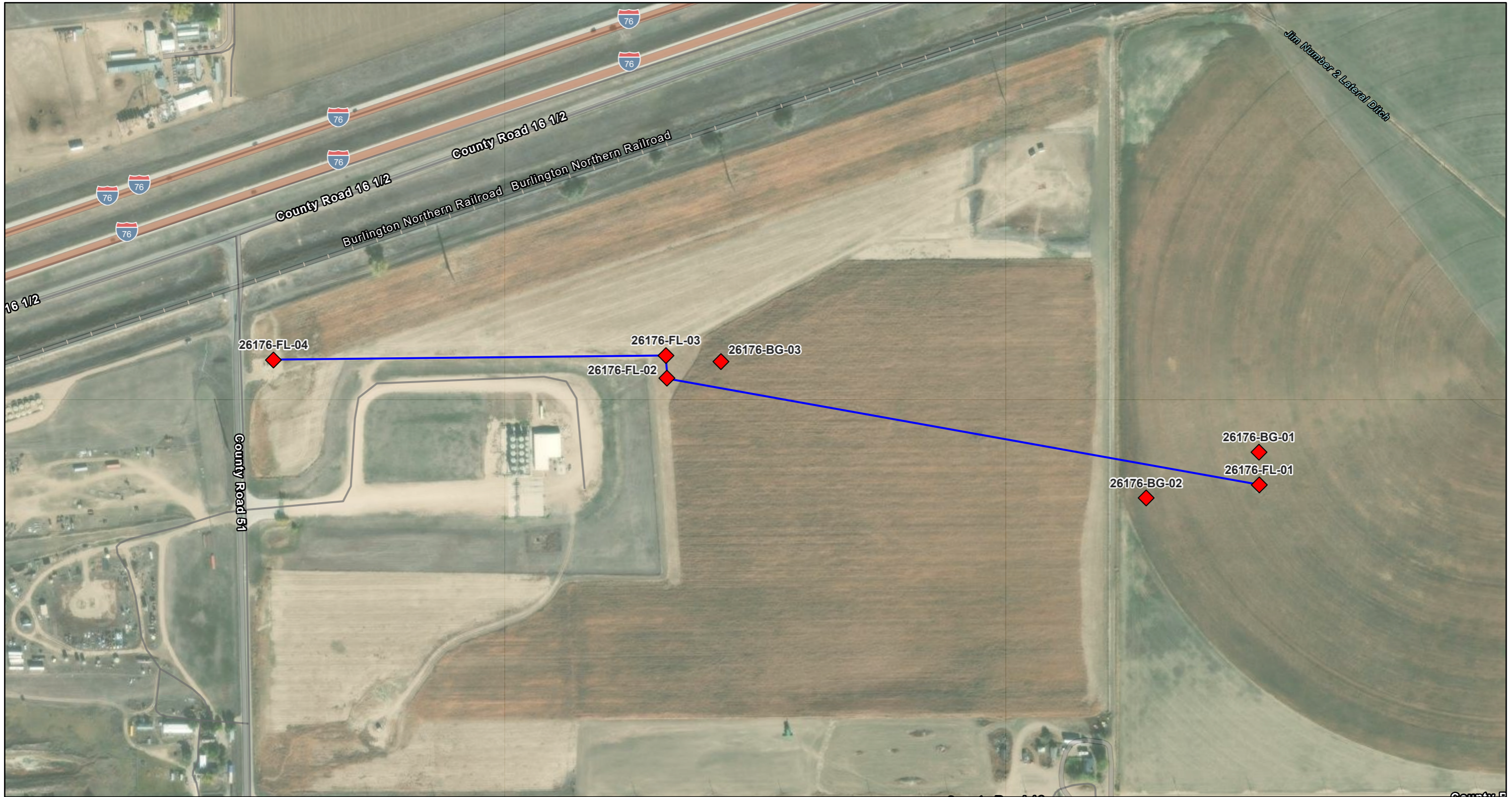


Rem 26176 Proposed Flowline Soil Sample Map



6/26/2025, 2:51:42 PM

Sample Location (Editable)

◆ Proposed Location

Production Line (Editable)

— Preliminary (QA/QC'd From Site Map)

Access Roads (Editable)

— Unknown Status

World Imagery

Low Resolution 15m Imagery

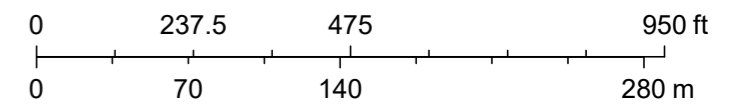
High Resolution 60cm Imagery

High Resolution 30cm Imagery

Citations

1.2m Resolution Metadata

1:3,486



Sources: Esri, TomTom, Garmin, FAO, NOAA, USGS, © OpenStreetMap contributors, and the GIS User Community, Maxar