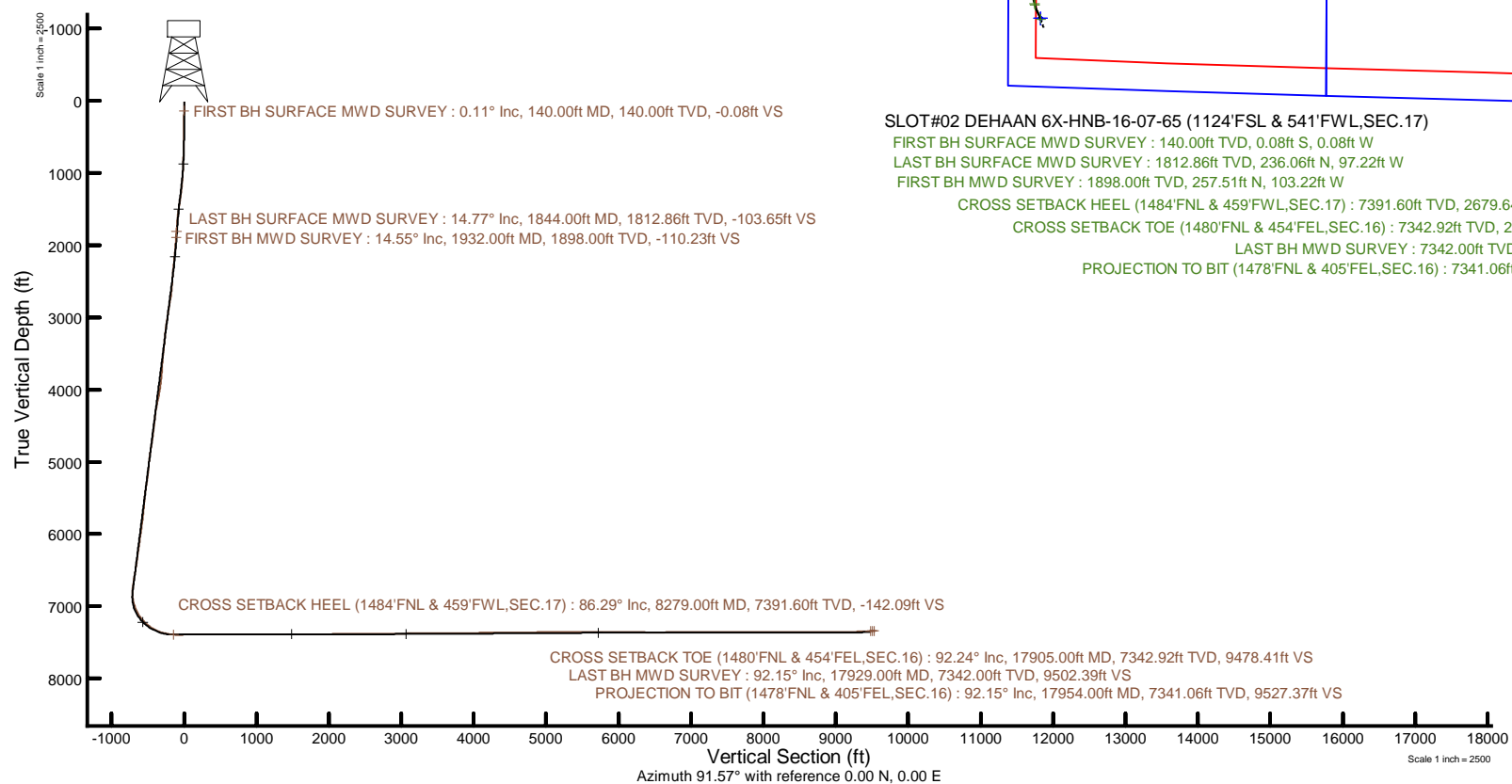
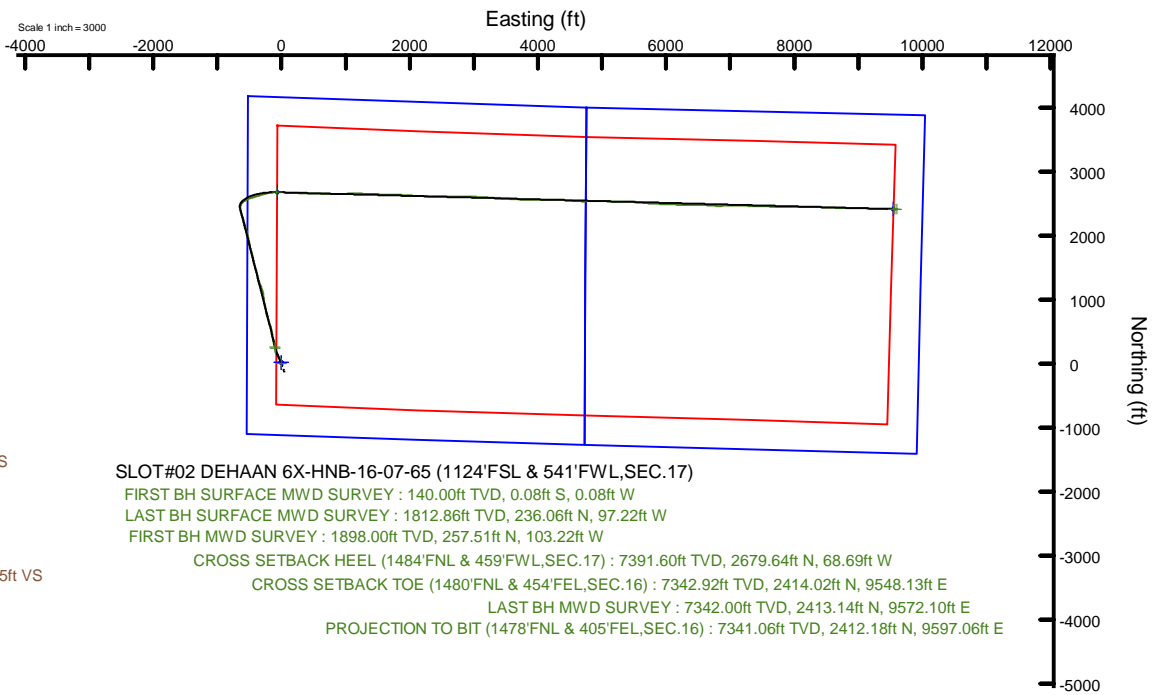


# BAYSWATER E&P, LLC



Location: COLORADO Slot: SLOT#02 DEHAAN 6X-HNB-16-07-65 (1124'FSL & 541'FWL,SEC.17)  
 Field: WELD COUNTY (NAD83/TRUE NORTH) Well: DEHAAN 6X-HNB-16-07-65  
 Facility: SEC.17-T07N-R65W Wellbore: DEHAAN 6X-HNB-16-07-65 PWB

Plot reference wellpath is DEHAAN 6X-HNB-16-07-65 PWP Rev-A.0	Grid System: NAD83 / Lambert Colorado SP, Northern Zone (501), US feet
True vertical depths are referenced to Ensign 153 (23) (RKB)	North Reference: True north
Reference wellpath measured depths are referenced to Ensign 153 (23) (RKB)	Scale: True distance
Ensign 153 (23) (RKB) to Mean Sea Level: 4929 feet	Coordinates are in feet referenced to Slot
Mean Sea Level to Ground level (At Slot: SLOT#02 DEHAAN 6X-HNB-16-07-65 (1124'FSL & 541'FWL,SEC.17)): -4906 feet	Depths are in feet
Offset wellpath MDs are referenced to each path's default MD datum	Created by: painsetr on 2023-03-31; Database: Bayswater



**SLOT#02 DEHAAN 6X-HNB-16-07-65 (1124'FSL & 541'FWL,SEC.17)**  
 FIRST BH SURFACE MWD SURVEY : 140.00ft TVD, 0.08ft S, 0.08ft W  
 LAST BH SURFACE MWD SURVEY : 1812.86ft TVD, 236.06ft N, 97.22ft W  
 FIRST BH MWD SURVEY : 1898.00ft TVD, 257.51ft N, 103.22ft W  
 CROSS SETBACK HEEL (1484'FNL & 459'FWL,SEC.17) : 7391.60ft TVD, 2679.64ft N, 68.69ft W  
 CROSS SETBACK TOE (1480'FNL & 454'FEL,SEC.16) : 7342.92ft TVD, 2414.02ft N, 9548.13ft E  
 LAST BH MWD SURVEY : 7342.00ft TVD, 2413.14ft N, 9572.10ft E  
 PROJECTION TO BIT (1478'FNL & 405'FEL,SEC.16) : 7341.06ft TVD, 2412.18ft N, 9597.06ft E

FIRST BH SURFACE MWD SURVEY : 0.11° Inc, 140.00ft MD, 140.00ft TVD, -0.08ft VS

LAST BH SURFACE MWD SURVEY : 14.77° Inc, 1844.00ft MD, 1812.86ft TVD, -103.65ft VS

FIRST BH MWD SURVEY : 14.55° Inc, 1932.00ft MD, 1898.00ft TVD, -110.23ft VS

CROSS SETBACK HEEL (1484'FNL & 459'FWL,SEC.17) : 86.29° Inc, 8279.00ft MD, 7391.60ft TVD, -142.09ft VS

CROSS SETBACK TOE (1480'FNL & 454'FEL,SEC.16) : 92.24° Inc, 17905.00ft MD, 7342.92ft TVD, 9478.41ft VS

LAST BH MWD SURVEY : 92.15° Inc, 17929.00ft MD, 7342.00ft TVD, 9502.39ft VS

PROJECTION TO BIT (1478'FNL & 405'FEL,SEC.16) : 92.15° Inc, 17954.00ft MD, 7341.06ft TVD, 9527.37ft VS

REFERENCE WELLPATH IDENTIFICATION			
Operator	BAYSWATER E&P, LLC	Well	DEHAAN 6X-HNB-16-07-65
Field	WELD COUNTY (NAD83/TRUE NORTH)	API	0512349463
Facility	SEC.17-T07N-R65W	Wellbore	DEHAAN 6X-HNB-16-07-65 AWB
Slot	SLOT#02 DEHAAN 6X-HNB-16-07-65 (1124'FSL & 541'FWL,SEC.17)		

REPORT SETUP INFORMATION			
Projection System	NAD83 / Lambert Colorado SP, Northern Zone (501), US feet	Software System	WellArchitect® 6.0
North Reference	True	User	Painsetr
Scale	0.999972	Report Generated	3/31/2023 at 10:33:05 AM
Convergence at slot	0.52° East	Database	Bayswater

WELLPATH LOCATION						
	Local coordinates		Grid coordinates		Geographic coordinates	
	North[ft]	East[ft]	Easting[US ft]	Northing[US ft]	Latitude	Longitude
Slot Location	-14.62	4.04	3223761.02	1451809.60	40.5708269°	-104.6945385°
Facility Reference Pt			3223756.85	1451824.18	40.5708670°	-104.6945530°
Field Reference Pt			3174587.00	1430859.71	40.5144139°	-104.8720750°

WELLPATH DATUM			
Calculation method	Minimum curvature	Ensign 153 (23') (RKB) to Facility Vertical Datum	4929.00ft
Horizontal Reference Pt	Slot	Ensign 153 (23') (RKB) to Mean Sea Level	4929.00ft
Vertical Reference Pt	Ensign 153 (23') (RKB)	Ensign 153 (23') (RKB) to Ground Level at Slot (SLOT#02 DEHAAN 6X-HNB-16-07-65 (1124'FSL & 541'FWL,SEC.17))	23.00ft
MD Reference Pt	Ensign 153 (23') (RKB)	Section Origin	N 0.00, E 0.00 ft
Field Vertical Reference	Mean Sea Level	Section Azimuth	91.57°

REFERENCE WELLPATH IDENTIFICATION				
Operator	BAYSWATER E&P, LLC		Well	DEHAAN 6X-HNB-16-07-65
Field	WELD COUNTY (NAD83/TRUE NORTH)		API	0512349463
Facility	SEC.17-T07N-R65W		Wellbore	DEHAAN 6X-HNB-16-07-65 AWB
Slot	SLOT#02 DEHAAN 6X-HNB-16-07-65 (1124'FSL & 541'FWL,SEC.17)			

WELLPATH DATA (206 stations) † = interpolated, ‡ = extrapolated station												
MD [ft]	Inclination [°]	Azimuth [°]	TVD [ft]	Vert Sect [ft]	North [ft]	East [ft]	Grid East [US ft]	Grid North [US ft]	Latitude	Longitude	DLS ["/100ft]	Comments
0.00†	0.000	224.460	0.00	0.00	0.00	0.00	3223761.02	1451809.59	40.5708269	-104.6945385	0.00	
23.00	0.000	224.460	23.00	0.00	0.00	0.00	3223761.02	1451809.59	40.5708269	-104.6945385	0.00	
140.00	0.110	224.460	140.00	-0.08	-0.08	-0.08	3223760.94	1451809.51	40.5708266	-104.6945388	0.09	FIRST BH SURFACE MWD SURVEY
231.00	0.150	260.750	231.00	-0.25	-0.16	-0.26	3223760.76	1451809.43	40.5708264	-104.6945394	0.10	
322.00	0.790	253.610	322.00	-0.97	-0.36	-0.98	3223760.04	1451809.23	40.5708259	-104.6945420	0.70	
412.00	0.580	261.640	411.99	-2.01	-0.60	-2.02	3223759.00	1451808.98	40.5708252	-104.6945458	0.26	
501.00	1.480	309.030	500.98	-3.36	0.06	-3.36	3223757.66	1451809.62	40.5708270	-104.6945506	1.31	
591.00	2.460	335.870	590.92	-5.12	2.55	-5.05	3223755.94	1451812.10	40.5708339	-104.6945567	1.47	
680.00	2.220	346.890	679.85	-6.39	5.98	-6.23	3223754.74	1451815.51	40.5708433	-104.6945609	0.57	
770.00	3.150	324.110	769.75	-8.33	9.68	-8.07	3223752.86	1451819.20	40.5708534	-104.6945675	1.55	
859.00	5.400	344.910	858.50	-11.02	15.70	-10.59	3223750.28	1451825.20	40.5708700	-104.6945766	3.03	
949.00	8.200	340.460	947.86	-14.55	25.84	-13.84	3223746.94	1451835.31	40.5708978	-104.6945883	3.16	
1038.00	10.500	341.970	1035.67	-19.55	39.54	-18.48	3223742.18	1451848.96	40.5709354	-104.6946050	2.60	
1127.00	13.200	342.920	1122.77	-25.53	56.96	-23.97	3223736.53	1451866.34	40.5709832	-104.6946248	3.04	
1217.00	16.090	338.660	1209.84	-33.67	78.41	-31.53	3223728.78	1451887.71	40.5710421	-104.6946520	3.42	
1307.00	16.240	337.380	1296.28	-43.68	101.64	-40.91	3223719.19	1451910.86	40.5711059	-104.6946857	0.43	
1397.00	16.360	331.350	1382.67	-55.22	124.38	-51.83	3223708.06	1451933.50	40.5711683	-104.6947250	1.88	
1486.00	15.840	328.830	1468.18	-68.10	145.78	-64.13	3223695.57	1451954.78	40.5712270	-104.6947693	0.98	
1576.00	16.300	334.110	1554.67	-80.56	167.65	-76.00	3223683.50	1451976.54	40.5712870	-104.6948120	1.70	
1664.00	15.640	341.200	1639.28	-90.39	189.99	-85.21	3223674.08	1451998.80	40.5713484	-104.6948452	2.34	
1754.00	15.500	347.650	1725.98	-97.50	213.23	-91.70	3223667.39	1452021.97	40.5714121	-104.6948685	1.93	
1844.00	14.770	345.120	1812.86	-103.65	236.06	-97.22	3223661.67	1452044.76	40.5714748	-104.6948884	1.09	LAST BH SURFACE MWD SURVEY
1932.00	14.550	343.610	1898.00	-110.23	257.51	-103.22	3223655.47	1452066.15	40.5715337	-104.6949100	0.50	FIRST BH MWD SURVEY
1977.00	14.750	346.060	1941.53	-113.51	268.49	-106.19	3223652.40	1452077.10	40.5715638	-104.6949207	1.45	
2066.00	16.980	345.230	2027.14	-120.19	292.06	-112.23	3223646.14	1452100.61	40.5716285	-104.6949425	2.52	
2156.00	19.980	347.290	2112.49	-127.68	319.77	-118.97	3223639.15	1452128.26	40.5717046	-104.6949667	3.41	
2245.00	21.040	346.300	2195.85	-135.64	350.12	-126.10	3223631.75	1452158.55	40.5717879	-104.6949924	1.25	
2335.00	21.150	347.190	2279.81	-143.93	381.65	-133.52	3223624.04	1452190.01	40.5718744	-104.6950191	0.38	
2424.00	22.050	348.040	2362.56	-151.83	413.65	-140.55	3223616.72	1452221.94	40.5719623	-104.6950444	1.07	
2513.00	22.980	352.090	2444.78	-158.60	447.21	-146.40	3223610.57	1452255.44	40.5720544	-104.6950654	2.03	

REFERENCE WELLPATH IDENTIFICATION				
Operator	BAYSWATER E&P, LLC		Well	DEHAAN 6X-HNB-16-07-65
Field	WELD COUNTY (NAD83/TRUE NORTH)		API	0512349463
Facility	SEC.17-T07N-R65W		Wellbore	DEHAAN 6X-HNB-16-07-65 AWB
Slot	SLOT#02 DEHAAN 6X-HNB-16-07-65 (1124'FSL & 541'FWL,SEC.17)			

WELLPATH DATA (206 stations)												
MD [ft]	Inclination [°]	Azimuth [°]	TVD [ft]	Vert Sect [ft]	North [ft]	East [ft]	Grid East [US ft]	Grid North [US ft]	Latitude	Longitude	DLS [°/100ft]	Comments
2603.00	25.090	353.320	2526.98	-164.23	483.57	-151.04	3223605.60	1452291.75	40.5721542	-104.6950821	2.41	
2692.00	25.070	349.380	2607.59	-170.92	520.84	-156.71	3223599.59	1452328.98	40.5722565	-104.6951026	1.88	
2782.00	25.280	345.180	2689.05	-180.37	558.16	-165.14	3223590.82	1452366.22	40.5723589	-104.6951329	2.00	
2872.00	25.360	339.660	2770.42	-192.98	594.82	-176.75	3223578.87	1452402.77	40.5724595	-104.6951747	2.62	
2962.00	25.060	342.400	2851.85	-206.44	631.06	-189.22	3223566.08	1452438.89	40.5725590	-104.6952196	1.34	
3051.00	25.460	344.130	2932.34	-218.36	667.43	-200.15	3223554.82	1452475.16	40.5726588	-104.6952589	0.94	
3140.00	25.320	341.910	3012.74	-230.50	703.92	-211.29	3223543.35	1452511.55	40.5727590	-104.6952990	1.08	
3229.00	25.230	342.180	3093.22	-243.20	740.07	-223.00	3223531.31	1452547.59	40.5728582	-104.6953412	0.16	
3319.00	24.970	346.260	3174.73	-254.58	776.79	-233.39	3223520.59	1452584.21	40.5729590	-104.6953786	1.94	
3409.00	25.340	350.390	3256.20	-263.33	814.23	-241.11	3223512.53	1452621.58	40.5730618	-104.6954064	1.99	
3497.00	25.430	350.910	3335.70	-270.48	851.46	-247.24	3223506.06	1452658.74	40.5731640	-104.6954285	0.27	
3587.00	25.280	347.370	3417.04	-278.77	889.29	-254.50	3223498.46	1452696.51	40.5732678	-104.6954546	1.69	
3676.00	24.760	348.080	3497.69	-287.78	926.07	-262.50	3223490.12	1452733.21	40.5733688	-104.6954834	0.67	
3766.00	25.070	352.330	3579.32	-295.24	963.41	-268.94	3223483.35	1452770.49	40.5734712	-104.6955066	2.02	
3855.00	25.020	352.840	3659.95	-301.12	1000.77	-273.80	3223478.14	1452807.81	40.5735738	-104.6955241	0.25	
3945.00	25.040	353.020	3741.50	-306.84	1038.56	-278.49	3223473.11	1452845.55	40.5736775	-104.6955409	0.09	
4034.00	25.110	352.070	3822.11	-312.76	1075.96	-283.38	3223467.88	1452882.90	40.5737802	-104.6955586	0.46	
4124.00	25.500	346.580	3903.48	-320.92	1113.72	-290.52	3223460.41	1452920.60	40.5738838	-104.6955842	2.64	
4214.00	25.410	340.920	3984.76	-332.74	1150.82	-301.33	3223449.26	1452957.60	40.5739857	-104.6956231	2.70	
4303.00	25.300	340.960	4065.19	-346.17	1186.84	-313.77	3223436.49	1452993.50	40.5740845	-104.6956679	0.13	
4392.00	25.450	335.080	4145.61	-361.40	1222.17	-328.04	3223421.91	1453028.70	40.5741815	-104.6957193	2.84	
4482.00	25.390	335.700	4226.90	-378.44	1257.29	-344.12	3223405.50	1453063.67	40.5742779	-104.6957772	0.30	
4571.00	25.210	342.970	4307.38	-392.82	1292.81	-357.53	3223391.77	1453099.07	40.5743754	-104.6958255	3.49	
4661.00	25.210	348.930	4388.82	-403.13	1329.96	-366.82	3223382.14	1453136.12	40.5744773	-104.6958589	2.82	
4750.00	25.450	348.110	4469.27	-411.72	1367.27	-374.40	3223374.22	1453173.37	40.5745798	-104.6958862	0.48	
4840.00	25.130	346.790	4550.64	-421.10	1404.80	-382.76	3223365.53	1453210.82	40.5746828	-104.6959163	0.72	
4929.00	25.100	346.320	4631.23	-430.89	1441.54	-391.54	3223356.41	1453247.47	40.5747836	-104.6959479	0.23	
5018.00	25.420	343.320	4711.72	-441.83	1478.18	-401.49	3223346.13	1453284.02	40.5748842	-104.6959837	1.48	
5108.00	25.390	341.430	4793.02	-454.53	1514.97	-413.18	3223334.11	1453320.71	40.5749852	-104.6960258	0.90	
5197.00	25.210	343.130	4873.48	-467.09	1551.20	-424.75	3223322.21	1453356.82	40.5750846	-104.6960675	0.84	

REFERENCE WELLPATH IDENTIFICATION				
Operator	BAYSWATER E&P, LLC		Well	DEHAAN 6X-HNB-16-07-65
Field	WELD COUNTY (NAD83/TRUE NORTH)		API	0512349463
Facility	SEC.17-T07N-R65W		Wellbore	DEHAAN 6X-HNB-16-07-65 AWB
Slot	SLOT#02 DEHAAN 6X-HNB-16-07-65 (1124'FSL & 541'FWL,SEC.17)			

WELLPATH DATA (206 stations)												
MD [ft]	Inclination [°]	Azimuth [°]	TVD [ft]	Vert Sect [ft]	North [ft]	East [ft]	Grid East [US ft]	Grid North [US ft]	Latitude	Longitude	DLS [°/100ft]	Comments
5287.00	25.260	347.470	4954.90	-477.83	1588.29	-434.48	3223312.14	1453393.82	40.5751864	-104.6961025	2.06	
5377.00	25.330	349.340	5036.27	-486.59	1625.95	-442.21	3223304.07	1453431.42	40.5752898	-104.6961303	0.89	
5467.00	25.220	347.850	5117.66	-495.22	1663.62	-449.81	3223296.13	1453469.01	40.5753932	-104.6961577	0.72	
5556.00	25.490	347.250	5198.09	-504.45	1700.84	-458.02	3223287.58	1453506.15	40.5754953	-104.6961872	0.42	
5646.00	25.550	343.010	5279.31	-515.42	1738.29	-467.97	3223277.29	1453543.51	40.5755981	-104.6962230	2.03	
5735.00	24.920	344.060	5359.82	-527.17	1774.67	-478.73	3223266.21	1453579.79	40.5756980	-104.6962618	0.87	
5824.00	23.770	346.940	5440.91	-537.34	1810.18	-487.93	3223256.68	1453615.21	40.5757955	-104.6962949	1.86	
5914.00	23.940	349.430	5523.22	-545.76	1845.80	-495.38	3223248.91	1453650.76	40.5758932	-104.6963217	1.13	
6003.00	25.120	349.720	5604.19	-553.44	1882.14	-502.06	3223241.90	1453687.04	40.5759930	-104.6963458	1.33	
6092.00	24.860	350.170	5684.85	-561.02	1919.16	-508.63	3223234.99	1453724.00	40.5760946	-104.6963694	0.36	
6181.00	25.620	347.790	5765.36	-569.30	1956.40	-515.89	3223227.39	1453761.17	40.5761968	-104.6963956	1.42	
6271.00	25.250	346.280	5846.64	-579.00	1994.07	-524.56	3223218.38	1453798.75	40.5763002	-104.6964268	0.83	
6360.00	25.410	345.100	5927.08	-589.42	2030.96	-533.97	3223208.64	1453835.56	40.5764015	-104.6964607	0.60	
6450.00	24.830	343.680	6008.57	-600.70	2067.76	-544.25	3223198.03	1453872.26	40.5765025	-104.6964977	0.93	
6538.00	25.360	342.850	6088.26	-612.42	2103.50	-555.00	3223186.95	1453907.90	40.5766006	-104.6965364	0.72	
6629.00	24.240	344.850	6170.87	-624.05	2140.15	-565.63	3223175.99	1453944.46	40.5767012	-104.6965746	1.54	
6719.00	25.320	343.750	6252.58	-635.25	2176.46	-575.84	3223165.45	1453980.67	40.5768008	-104.6966114	1.30	
6809.00	25.210	343.730	6333.97	-647.02	2213.34	-586.59	3223154.36	1454017.45	40.5769020	-104.6966501	0.12	
6898.00	25.150	343.420	6414.51	-658.71	2249.66	-597.30	3223143.32	1454053.67	40.5770017	-104.6966887	0.16	
6987.00	25.430	342.440	6494.99	-670.87	2286.00	-608.46	3223131.83	1454089.91	40.5771015	-104.6967288	0.57	
7077.00	25.490	340.920	6576.25	-684.03	2322.73	-620.62	3223119.34	1454126.52	40.5772023	-104.6967726	0.73	
7166.00	24.810	342.890	6656.81	-696.76	2358.67	-632.38	3223107.26	1454162.36	40.5773010	-104.6968149	1.21	
7256.00	23.840	348.160	6738.83	-707.03	2394.53	-641.67	3223097.65	1454198.12	40.5773994	-104.6968484	2.64	
7345.00	24.990	357.980	6819.90	-712.38	2430.93	-646.02	3223092.96	1454234.49	40.5774993	-104.6968641	4.73	
7434.00	26.280	23.400	6900.38	-706.21	2467.92	-638.84	3223099.81	1454271.54	40.5776008	-104.6968382	12.36	
7523.00	27.250	35.540	6979.91	-687.49	2502.61	-619.15	3223119.18	1454306.40	40.5776960	-104.6967673	6.23	
7612.00	30.940	51.680	7057.78	-658.49	2533.43	-589.30	3223148.75	1454337.49	40.5777806	-104.6966599	9.71	
7702.00	37.440	62.220	7132.26	-616.81	2560.58	-546.86	3223190.93	1454365.03	40.5778552	-104.6965071	9.75	
7791.00	44.650	72.380	7199.41	-563.57	2582.71	-492.99	3223244.60	1454387.64	40.5779159	-104.6963132	11.02	
7880.00	52.980	75.010	7257.97	-499.86	2601.40	-428.75	3223308.67	1454406.92	40.5779672	-104.6960819	9.62	

REFERENCE WELLPATH IDENTIFICATION				
Operator	BAYSWATER E&P, LLC		Well	DEHAAN 6X-HNB-16-07-65
Field	WELD COUNTY (NAD83/TRUE NORTH)		API	0512349463
Facility	SEC.17-T07N-R65W		Wellbore	DEHAAN 6X-HNB-16-07-65 AWB
Slot	SLOT#02 DEHAAN 6X-HNB-16-07-65 (1124'FSL & 541'FWL,SEC.17)			

WELLPATH DATA (206 stations) † = interpolated, ‡ = extrapolated station												
MD [ft]	Inclination [°]	Azimuth [°]	TVD [ft]	Vert Sect [ft]	North [ft]	East [ft]	Grid East [US ft]	Grid North [US ft]	Latitude	Longitude	DLS [°/100ft]	Comments
7970.00	61.410	70.860	7306.70	-428.31	2623.70	-356.56	3223380.65	1454429.87	40.5780284	-104.6958220	10.13	
8059.00	68.310	73.970	7344.50	-352.24	2647.96	-279.79	3223457.19	1454454.83	40.5780950	-104.6955457	8.37	
8148.00	76.430	80.170	7371.45	-270.21	2666.81	-197.22	3223539.59	1454474.43	40.5781468	-104.6952484	11.28	
8237.00	82.710	85.550	7387.57	-183.76	2677.64	-110.44	3223626.26	1454486.04	40.5781765	-104.6949360	9.22	
8279.00†	86.289	88.967	7391.60	-142.09	2679.64	-68.69	3223667.99	1454488.42	40.5781820	-104.6947858	11.76	CROSS SETBACK HEEL (1484'FNL & 459'FWL,SEC.17)
8326.00	90.310	92.760	7392.99	-95.13	2678.93	-21.74	3223714.95	1454488.13	40.5781800	-104.6946167	11.76	
8415.00	90.280	92.820	7392.53	-6.15	2674.59	67.15	3223803.87	1454484.61	40.5781681	-104.6942967	0.08	
8505.00	90.370	92.940	7392.02	83.83	2670.07	157.04	3223893.79	1454480.90	40.5781557	-104.6939731	0.17	
8594.00	90.250	92.660	7391.54	172.80	2665.72	245.93	3223982.72	1454477.36	40.5781438	-104.6936531	0.34	
8683.00	90.250	91.840	7391.15	261.80	2662.23	334.86	3224071.68	1454474.68	40.5781342	-104.6933330	0.92	
8772.00	90.280	92.010	7390.74	350.79	2659.24	423.81	3224160.64	1454472.50	40.5781260	-104.6930128	0.19	
8861.00	90.180	91.660	7390.38	439.79	2656.39	512.76	3224249.62	1454470.46	40.5781182	-104.6926926	0.41	
8951.00	90.220	90.610	7390.07	529.79	2654.61	602.74	3224339.61	1454469.49	40.5781133	-104.6923687	1.17	
9040.00	90.310	90.780	7389.66	618.78	2653.53	691.74	3224428.60	1454469.22	40.5781103	-104.6920483	0.22	
9130.00	90.310	91.050	7389.17	708.77	2652.09	781.72	3224518.60	1454468.60	40.5781063	-104.6917244	0.30	
9219.00	90.430	89.690	7388.59	797.74	2651.52	870.72	3224607.59	1454468.83	40.5781047	-104.6914040	1.53	
9308.00	90.180	88.720	7388.12	886.67	2652.75	959.71	3224696.56	1454470.88	40.5781081	-104.6910836	1.13	
9398.00	90.250	87.570	7387.78	976.50	2655.66	1049.66	3224786.48	1454474.61	40.5781161	-104.6907598	1.28	
9487.00	90.220	89.460	7387.42	1065.37	2657.97	1138.62	3224875.42	1454477.72	40.5781224	-104.6904396	2.12	
9576.00	90.060	92.270	7387.20	1154.36	2656.63	1227.60	3224964.40	1454477.18	40.5781187	-104.6901192	3.16	
9666.00	90.340	93.890	7386.89	1244.32	2651.79	1317.47	3225054.31	1454473.17	40.5781055	-104.6897957	1.83	
9755.00	90.090	91.940	7386.55	1333.29	2647.27	1406.35	3225143.22	1454469.45	40.5780930	-104.6894758	2.21	
9845.00	90.370	90.970	7386.19	1423.29	2644.98	1496.32	3225233.21	1454467.98	40.5780867	-104.6891519	1.12	
9933.00	90.250	89.710	7385.72	1511.27	2644.46	1584.31	3225321.20	1454468.26	40.5780853	-104.6888351	1.44	
10023.00	90.060	90.880	7385.47	1601.24	2644.00	1674.31	3225411.20	1454468.61	40.5780840	-104.6885112	1.32	
10112.00	90.250	92.810	7385.23	1690.24	2641.13	1763.26	3225500.16	1454466.55	40.5780761	-104.6881909	2.18	
10201.00	90.090	93.010	7384.97	1779.21	2636.61	1852.15	3225589.08	1454462.84	40.5780637	-104.6878710	0.29	
10291.00	90.250	94.110	7384.70	1869.16	2631.02	1941.97	3225678.95	1454458.07	40.5780483	-104.6875476	1.24	
10380.00	90.060	92.830	7384.46	1958.10	2625.64	2030.80	3225767.83	1454453.49	40.5780335	-104.6872278	1.45	
10470.00	90.280	91.840	7384.19	2048.10	2621.97	2120.73	3225857.78	1454450.64	40.5780234	-104.6869041	1.13	

REFERENCE WELLPATH IDENTIFICATION			
Operator	BAYSWATER E&P, LLC	Well	DEHAAN 6X-HNB-16-07-65
Field	WELD COUNTY (NAD83/TRUE NORTH)	API	0512349463
Facility	SEC.17-T07N-R65W	Wellbore	DEHAAN 6X-HNB-16-07-65 AWB
Slot	SLOT#02 DEHAAN 6X-HNB-16-07-65 (1124'FSL & 541'FWL,SEC.17)		

WELLPATH DATA (206 stations)												
MD [ft]	Inclination [°]	Azimuth [°]	TVD [ft]	Vert Sect [ft]	North [ft]	East [ft]	Grid East [US ft]	Grid North [US ft]	Latitude	Longitude	DLS [°/100ft]	Comments
10560.00	89.940	92.960	7384.02	2138.08	2618.20	2210.65	3225947.73	1454447.69	40.5780131	-104.6865804	1.30	
10650.00	90.150	92.110	7383.95	2228.07	2614.22	2300.56	3226037.67	1454444.53	40.5780021	-104.6862567	0.97	
10739.00	90.030	90.540	7383.81	2317.07	2612.16	2389.53	3226126.65	1454443.28	40.5779965	-104.6859365	1.77	
10828.00	90.030	91.750	7383.76	2406.06	2610.38	2478.51	3226215.65	1454442.31	40.5779915	-104.6856161	1.36	
10918.00	89.780	91.350	7383.91	2496.06	2607.95	2568.48	3226305.63	1454440.69	40.5779848	-104.6852923	0.52	
11007.00	90.830	89.770	7383.44	2585.04	2607.08	2657.47	3226394.62	1454440.63	40.5779824	-104.6849719	2.13	
11096.00	91.200	89.060	7381.86	2673.97	2607.99	2746.45	3226483.59	1454442.34	40.5779849	-104.6846516	0.90	
11185.00	91.320	90.070	7379.90	2762.89	2608.66	2835.43	3226572.55	1454443.83	40.5779867	-104.6843313	1.14	
11275.00	90.520	90.670	7378.46	2852.86	2608.08	2925.41	3226662.53	1454444.06	40.5779851	-104.6840074	1.11	
11364.00	90.650	92.100	7377.55	2941.85	2605.93	3014.38	3226751.51	1454442.72	40.5779792	-104.6836871	1.61	
11453.00	90.830	92.560	7376.40	3030.83	2602.31	3103.30	3226840.46	1454439.91	40.5779692	-104.6833670	0.55	
11542.00	90.460	93.920	7375.40	3119.79	2597.28	3192.15	3226929.35	1454435.69	40.5779554	-104.6830471	1.58	
11631.00	90.370	93.730	7374.75	3208.72	2591.35	3280.95	3227018.19	1454430.56	40.5779390	-104.6827275	0.24	
11720.00	90.490	92.140	7374.09	3297.68	2586.79	3369.82	3227107.11	1454426.81	40.5779265	-104.6824075	1.79	
11810.00	90.460	93.830	7373.34	3387.65	2582.10	3459.70	3227197.01	1454422.94	40.5779136	-104.6820840	1.88	
11900.00	90.620	94.700	7372.49	3477.55	2575.41	3549.44	3227286.82	1454417.06	40.5778952	-104.6817609	0.98	
11988.00	91.080	93.210	7371.19	3565.46	2569.34	3637.22	3227374.64	1454411.79	40.5778785	-104.6814450	1.77	
12078.00	90.310	93.320	7370.09	3655.41	2564.22	3727.07	3227464.53	1454407.48	40.5778644	-104.6811215	0.86	
12167.00	90.400	92.030	7369.54	3744.39	2560.06	3815.97	3227553.46	1454404.14	40.5778530	-104.6808015	1.45	
12256.00	90.310	92.330	7368.99	3833.38	2556.68	3904.90	3227642.42	1454401.56	40.5778436	-104.6804814	0.35	
12345.00	90.310	90.060	7368.51	3922.38	2554.82	3993.87	3227731.40	1454400.51	40.5778385	-104.6801611	2.55	
12434.00	90.430	86.960	7367.94	4011.24	2557.14	4082.83	3227820.33	1454403.63	40.5778448	-104.6798408	3.49	
12524.00	90.580	88.070	7367.14	4101.01	2561.04	4172.74	3227910.20	1454408.35	40.5778555	-104.6795172	1.24	
12614.00	90.280	90.770	7366.47	4190.93	2561.95	4262.72	3228000.17	1454410.08	40.5778579	-104.6791932	3.02	
12703.00	90.000	93.800	7366.25	4279.91	2558.40	4351.64	3228089.11	1454407.34	40.5778482	-104.6788731	3.42	
12792.00	90.460	93.280	7365.89	4368.86	2552.91	4440.47	3228177.99	1454402.65	40.5778330	-104.6785534	0.78	
12881.00	91.020	95.710	7364.74	4457.73	2545.93	4529.18	3228266.76	1454396.48	40.5778138	-104.6782340	2.80	
12971.00	90.620	94.860	7363.45	4547.53	2537.64	4618.79	3228356.43	1454389.01	40.5777910	-104.6779114	1.04	
13060.00	90.830	89.800	7362.33	4636.49	2534.03	4707.68	3228445.35	1454386.20	40.5777811	-104.6775915	5.69	
13150.00	90.830	87.510	7361.02	4726.35	2536.14	4797.64	3228535.28	1454389.13	40.5777868	-104.6772676	2.54	

REFERENCE WELLPATH IDENTIFICATION			
Operator	BAYSWATER E&P, LLC	Well	DEHAAN 6X-HNB-16-07-65
Field	WELD COUNTY (NAD83/TRUE NORTH)	API	0512349463
Facility	SEC.17-T07N-R65W	Wellbore	DEHAAN 6X-HNB-16-07-65 AWB
Slot	SLOT#02 DEHAAN 6X-HNB-16-07-65 (1124'FSL & 541'FWL,SEC.17)		

WELLPATH DATA (206 stations)												
MD [ft]	Inclination [°]	Azimuth [°]	TVD [ft]	Vert Sect [ft]	North [ft]	East [ft]	Grid East [US ft]	Grid North [US ft]	Latitude	Longitude	DLS [°/100ft]	Comments
13239.00	90.710	88.540	7359.83	4815.17	2539.21	4886.58	3228624.19	1454393.00	40.5777952	-104.6769474	1.17	
13329.00	90.710	91.140	7358.71	4905.12	2539.46	4976.56	3228714.16	1454394.07	40.5777958	-104.6766235	2.89	
13418.00	90.860	93.470	7357.49	4994.10	2535.88	5065.48	3228803.10	1454391.30	40.5777860	-104.6763034	2.62	
13508.00	90.860	92.580	7356.14	5084.06	2531.13	5155.34	3228893.00	1454387.37	40.5777729	-104.6759799	0.99	
13598.00	90.680	91.710	7354.93	5174.04	2527.76	5245.27	3228982.96	1454384.82	40.5777636	-104.6756562	0.99	
13688.00	86.950	86.500	7356.79	5263.89	2529.16	5335.19	3229072.86	1454387.04	40.5777674	-104.6753325	7.12	
13777.00	90.580	90.630	7358.71	5352.72	2531.39	5424.11	3229161.75	1454390.07	40.5777734	-104.6750124	6.18	
13867.00	89.750	95.110	7358.45	5442.67	2526.88	5513.97	3229251.65	1454386.38	40.5777610	-104.6746889	5.06	
13955.00	90.220	96.460	7358.48	5530.43	2518.01	5601.52	3229339.27	1454378.31	40.5777366	-104.6743738	1.62	
14045.00	90.400	96.110	7357.99	5620.12	2508.16	5690.98	3229428.81	1454369.27	40.5777095	-104.6740517	0.44	
14135.00	90.490	94.840	7357.29	5709.91	2499.57	5780.56	3229518.47	1454361.50	40.5776859	-104.6737293	1.41	
14224.00	90.460	91.070	7356.55	5798.87	2494.99	5869.43	3229607.37	1454357.72	40.5776732	-104.6734094	4.24	
14314.00	89.940	90.450	7356.24	5888.85	2493.79	5959.42	3229697.36	1454357.34	40.5776699	-104.6730854	0.90	
14403.00	89.970	91.830	7356.31	5977.85	2492.02	6048.40	3229786.35	1454356.38	40.5776650	-104.6727651	1.55	
14492.00	89.540	94.800	7356.69	6066.80	2486.88	6137.24	3229875.23	1454352.04	40.5776508	-104.6724453	3.37	
14581.00	89.570	92.700	7357.38	6155.73	2481.06	6226.04	3229964.08	1454347.03	40.5776347	-104.6721256	2.36	
14671.00	89.420	89.520	7358.17	6245.71	2479.31	6316.01	3230054.06	1454346.10	40.5776299	-104.6718017	3.54	
14760.00	89.570	89.580	7358.96	6334.65	2480.01	6405.00	3230143.04	1454347.61	40.5776318	-104.6714814	0.18	
14849.00	89.450	90.550	7359.72	6423.61	2479.91	6494.00	3230232.03	1454348.31	40.5776314	-104.6711610	1.10	
14938.00	90.250	92.230	7359.95	6512.61	2477.75	6582.97	3230321.01	1454346.96	40.5776254	-104.6708407	2.09	
15027.00	90.340	95.280	7359.49	6601.53	2471.92	6671.76	3230409.86	1454341.94	40.5776094	-104.6705211	3.43	
15116.00	90.520	93.130	7358.83	6690.43	2465.40	6760.52	3230498.66	1454336.22	40.5775914	-104.6702016	2.42	
15205.00	90.000	88.880	7358.42	6779.41	2463.84	6849.48	3230587.64	1454335.47	40.5775870	-104.6698813	4.81	
15294.00	90.030	88.230	7358.40	6868.28	2466.08	6938.45	3230676.58	1454338.52	40.5775931	-104.6695611	0.73	
15383.00	89.910	89.080	7358.44	6957.17	2468.17	7027.43	3230765.53	1454341.42	40.5775988	-104.6692408	0.96	
15472.00	90.180	90.380	7358.38	7046.12	2468.59	7116.42	3230854.52	1454342.65	40.5775999	-104.6689204	1.49	
15562.00	90.150	92.050	7358.12	7136.11	2466.68	7206.40	3230944.50	1454341.56	40.5775946	-104.6685965	1.86	
15651.00	90.090	91.200	7357.93	7225.11	2464.16	7295.36	3231033.48	1454339.84	40.5775876	-104.6682762	0.96	
15741.00	89.630	92.200	7358.15	7315.11	2461.49	7385.32	3231123.46	1454337.99	40.5775802	-104.6679524	1.22	
15830.00	89.540	91.610	7358.79	7404.11	2458.53	7474.27	3231212.43	1454335.84	40.5775720	-104.6676322	0.67	

REFERENCE WELLPATH IDENTIFICATION				
Operator	BAYSWATER E&P, LLC		Well	DEHAAN 6X-HNB-16-07-65
Field	WELD COUNTY (NAD83/TRUE NORTH)		API	0512349463
Facility	SEC.17-T07N-R65W		Wellbore	DEHAAN 6X-HNB-16-07-65 AWB
Slot	SLOT#02 DEHAAN 6X-HNB-16-07-65 (1124'FSL & 541'FWL,SEC.17)			

WELLPATH DATA (206 stations) † = interpolated, ‡ = extrapolated station												
MD [ft]	Inclination [°]	Azimuth [°]	TVD [ft]	Vert Sect [ft]	North [ft]	East [ft]	Grid East [US ft]	Grid North [US ft]	Latitude	Longitude	DLS [°/100ft]	Comments
15920.00	90.000	91.500	7359.16	7494.10	2456.09	7564.24	3231302.41	1454334.21	40.5775652	-104.6673083	0.53	
16009.00	90.000	92.250	7359.16	7583.10	2453.18	7653.19	3231391.38	1454332.11	40.5775571	-104.6669881	0.84	
16099.00	90.220	90.850	7358.98	7673.10	2450.74	7743.15	3231481.36	1454330.49	40.5775504	-104.6666643	1.57	
16189.00	90.310	89.800	7358.57	7763.08	2450.23	7833.15	3231571.36	1454330.80	40.5775489	-104.6663403	1.17	
16278.00	90.520	89.040	7357.92	7852.01	2451.13	7922.14	3231660.33	1454332.51	40.5775513	-104.6660199	0.89	
16367.00	90.220	90.750	7357.35	7940.97	2451.30	8011.14	3231749.32	1454333.48	40.5775516	-104.6656996	1.95	
16456.00	90.310	91.120	7356.94	8029.96	2449.84	8100.12	3231838.32	1454332.84	40.5775476	-104.6653792	0.43	
16546.00	90.280	91.590	7356.47	8119.96	2447.71	8190.10	3231928.30	1454331.53	40.5775417	-104.6650553	0.52	
16635.00	90.250	90.440	7356.06	8208.95	2446.14	8279.08	3232017.29	1454330.76	40.5775372	-104.6647350	1.29	
16725.00	90.340	90.610	7355.60	8298.94	2445.31	8369.07	3232107.29	1454330.75	40.5775349	-104.6644110	0.21	
16814.00	90.280	91.780	7355.12	8387.93	2443.46	8458.05	3232196.28	1454329.70	40.5775297	-104.6640907	1.32	
16904.00	90.090	92.680	7354.82	8477.92	2439.96	8547.98	3232286.23	1454327.02	40.5775200	-104.6637670	1.02	
16993.00	90.090	93.910	7354.68	8566.88	2434.84	8636.83	3232375.12	1454322.71	40.5775059	-104.6634472	1.38	
17082.00	90.280	93.720	7354.40	8655.81	2428.92	8725.64	3232463.97	1454317.60	40.5774896	-104.6631275	0.30	
17171.00	90.400	90.250	7353.87	8744.80	2425.84	8814.57	3232552.93	1454315.32	40.5774810	-104.6628074	3.90	
17261.00	90.340	88.340	7353.29	8834.72	2426.94	8904.55	3232642.90	1454317.25	40.5774840	-104.6624834	2.12	
17350.00	89.940	90.020	7353.07	8923.64	2428.22	8993.54	3232731.87	1454319.33	40.5774874	-104.6621631	1.94	
17440.00	90.150	92.370	7353.00	9013.63	2426.34	9083.52	3232821.85	1454318.27	40.5774821	-104.6618392	2.62	
17529.00	89.910	92.550	7352.95	9102.62	2422.52	9172.43	3232910.80	1454315.26	40.5774716	-104.6615191	0.34	
17618.00	90.220	91.500	7352.85	9191.61	2419.38	9261.38	3232999.76	1454312.92	40.5774628	-104.6611989	1.23	
17707.00	92.220	90.760	7350.96	9280.59	2417.62	9350.33	3233088.73	1454311.97	40.5774579	-104.6608787	2.40	
17797.00	92.400	90.650	7347.33	9370.50	2416.51	9440.25	3233178.65	1454311.68	40.5774548	-104.6605550	0.23	
17886.00	92.310	91.770	7343.67	9459.42	2414.64	9529.16	3233267.57	1454310.61	40.5774495	-104.6602350	1.26	
17905.00†	92.239	91.964	7342.92	9478.41	2414.02	9548.13	3233286.55	1454310.17	40.5774478	-104.6601667	1.09	CROSS SETBACK TOE (1480'FNL & 454'FEL,SEC.16)
17929.00	92.150	92.210	7342.00	9502.39	2413.14	9572.10	3233310.52	1454309.51	40.5774454	-104.6600804	1.09	LAST BH MWD SURVEY
17954.00‡	92.150	92.210	7341.06	9527.37	2412.18	9597.06	3233335.49	1454308.77	40.5774427	-104.6599905	0.00	PROJECTION TO BIT (1478'FNL & 405'FEL,SEC.16)

REFERENCE WELLPATH IDENTIFICATION			
Operator	BAYSWATER E&P, LLC	Well	DEHAAN 6X-HNB-16-07-65
Field	WELD COUNTY (NAD83/TRUE NORTH)	API	0512349463
Facility	SEC.17-T07N-R65W	Wellbore	DEHAAN 6X-HNB-16-07-65 AWB
Slot	SLOT#02 DEHAAN 6X-HNB-16-07-65 (1124'FSL & 541'FWL,SEC.17)		

TARGETS								
Name	TVD [ft]	North [ft]	East [ft]	Grid East [US ft]	Grid North [US ft]	Latitude	Longitude	Shape
SEC.16-T07N-R65W	0.00	14.62	-4.04	3223756.85	1451824.18	40.5708670	-104.6945530	polygon
	2D Polygon: dimensions not calculated							
SEC.16/17-T07N-R65W (SB 460')	0.00	14.62	-4.04	3223756.85	1451824.18	40.5708670	-104.6945530	polygon
	2D Polygon: dimensions not calculated							
SEC.17-T07N-R65W	0.00	14.62	-4.04	3223756.85	1451824.18	40.5708670	-104.6945530	polygon
	2D Polygon: dimensions not calculated							
DEHAAN 6X-HNB-16-07-65 BHL REV-1 (1480'FNL 460'FEL,SEC.16)	7359.00	2414.08	9542.48	3233280.90	1454310.18	40.5774480	-104.6601870	point
DEHAAN 6X-HNB-16-07-65 LP REV-1 (1486'FNL 460'FWL,SEC.17)	7392.00	2677.46	-67.37	3223669.33	1454486.25	40.5781760	-104.6947810	point

WELLPATH COMPOSITION - Ref Wellbore: DEHAAN 6X-HNB-16-07-65 AWB Ref Wellpath: DEHAAN 6X-HNB-16-07-65 AWP					
Start MD [ft]	End MD [ft]	Positional Uncertainty Model	Log Name/Comment	Wellbore	Survey Date
23.00	1844.00	OWSG MWD rev2 + IFR1 + Multi-Station Correction	OWSG MWD rev2 + IFR1 + MS 13-1/2" <140 - 1844>	DEHAAN 6X-HNB-16-07-65 AWB	1/6/2023
1844.00	17954.00	OWSG MWD rev2 + IFR1 + Multi-Station Correction	OWSG MWD rev2 + IFR1 + MS 8-1/2" <1932 - 17929>	DEHAAN 6X-HNB-16-07-65 AWB	1/6/2023

REFERENCE WELLPATH IDENTIFICATION			
Operator	BAYSWATER E&P, LLC	Well	DEHAAN 6X-HNB-16-07-65
Field	WELD COUNTY (NAD83/TRUE NORTH)	API	0512349463
Facility	SEC.17-T07N-R65W	Wellbore	DEHAAN 6X-HNB-16-07-65 AWB
Slot	SLOT#02 DEHAAN 6X-HNB-16-07-65 (1124'FSL & 541'FWL,SEC.17)		

WELLPATH COMMENTS				
MD [ft]	Inclination [°]	Azimuth [°]	TVD [ft]	Comment
140.00	0.110	224.460	140.00	FIRST BH SURFACE MWD SURVEY
1844.00	14.770	345.120	1812.86	LAST BH SURFACE MWD SURVEY
1932.00	14.550	343.610	1898.00	FIRST BH MWD SURVEY
8279.00	86.289	88.967	7391.60	CROSS SETBACK HEEL (1484'FNL & 459'FWL,SEC.17)
17905.00	92.239	91.964	7342.92	CROSS SETBACK TOE (1480'FNL & 454'FEL,SEC.16)
17929.00	92.150	92.210	7342.00	LAST BH MWD SURVEY
17954.00	92.150	92.210	7341.06	PROJECTION TO BIT (1478'FNL & 405'FEL,SEC.16)