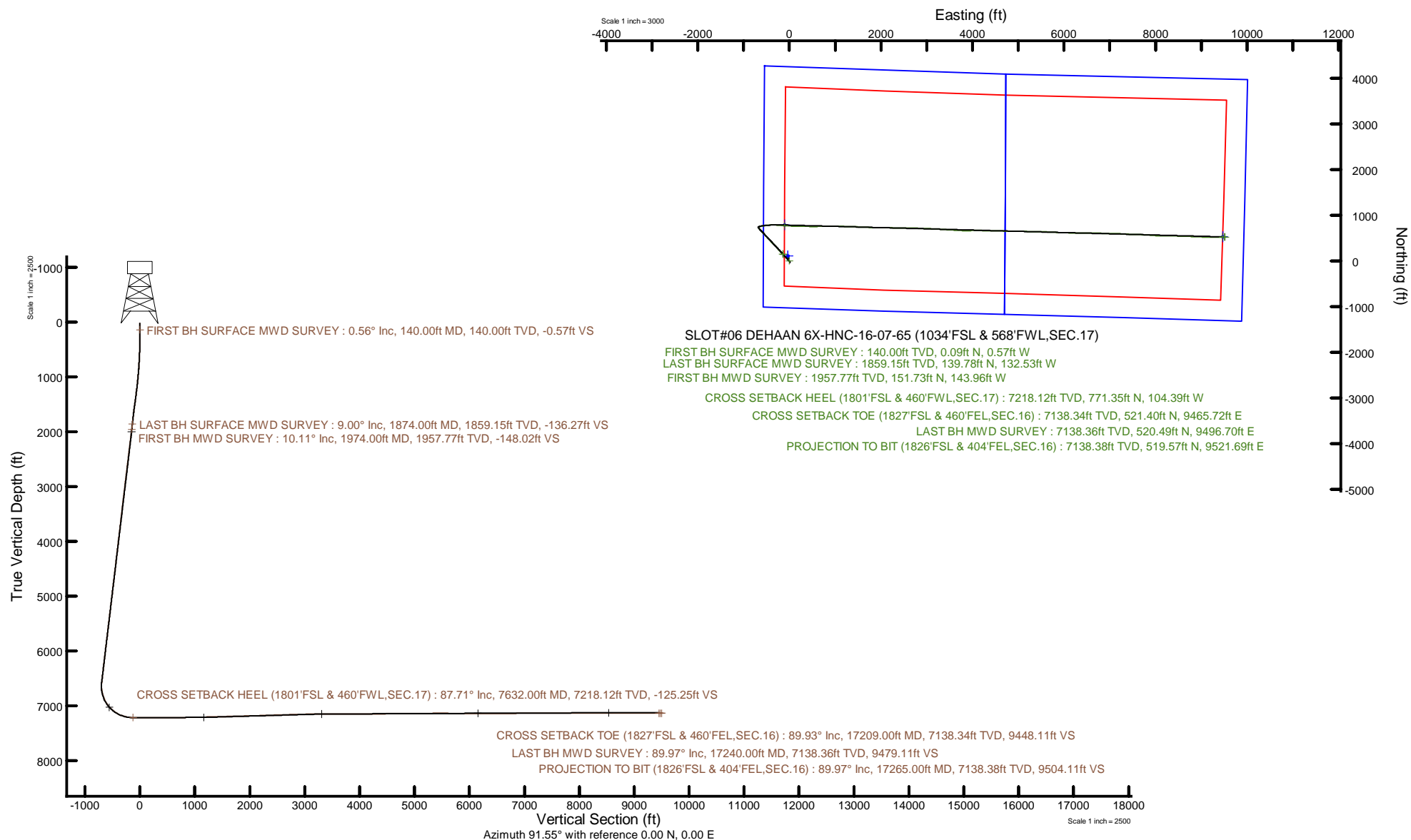


BAYSWATER E&P, LLC

Location: COLORADO Slot: SLOT#06 DEHAAN 6X-HNC-16-07-65 (1034'FSL & 568'FWL,SEC.17)
Field: WELD COUNTY (NAD83/TRUE NORTH) Well: DEHAAN 6X-HNC-16-07-65
Facility: SEC.17-T07N-R65W Wellbore: DEHAAN 6X-HNC-16-07-65 PWB



Plot reference wellpath is DEHAAN 6X-HNC-16-07-65 PWP Rev-B.0	Grid System: NAD83 / Lambert Colorado SP, Northern Zone (501), US feet
True vertical depths are referenced to Ensign 153 (23) (RKB)	North Reference: True north
Reference wellpath measured depths are referenced to Ensign 153 (23) (RKB)	Scale: True distance
Ensign 153 (23) (RKB) to Mean Sea Level: 4929 feet	Coordinates are in feet referenced to Slot
Mean Sea Level to Ground level (At Slot: SLOT#06 DEHAAN 6X-HNC-16-07-65 (1034'FSL & 568'FWL,SEC.17)): -4906 feet	Depths are in feet
Offset wellpath MDs are referenced to each path's default MD datum	Created by: painsetr on 2023-03-31; Database: Bayswater



Actual Wellpath Report

DEHAAN 6X-HNC-16-07-65 AWP

Page 1 of 10

REFERENCE WELLPATH IDENTIFICATION			
Operator	BAYSWATER E&P, LLC	Well	DEHAAN 6X-HNC-16-07-65
Field	WELD COUNTY (NAD83/TRUE NORTH)	API	0512349460
Facility	SEC.17-T07N-R65W	Wellbore	DEHAAN 6X-HNC-16-07-65 AWB
Slot	SLOT#06 DEHAAN 6X-HNC-16-07-65 (1034'FSL & 568'FWL,SEC.17)		

REPORT SETUP INFORMATION			
Projection System	NAD83 / Lambert Colorado SP, Northern Zone (501), US feet	Software System	WellArchitect® 6.0
North Reference	True	User	Painsetr
Scale	0.999972	Report Generated	3/31/2023 at 10:53:52 AM
Convergence at slot	0.52° East	Database	Bayswater

WELLPATH LOCATION						
	Local coordinates		Grid coordinates		Geographic coordinates	
	North[ft]	East[ft]	Easting[US ft]	Northing[US ft]	Latitude	Longitude
Slot Location	-105.98	30.58	3223788.39	1451718.49	40.5705761°	-104.6944429°
Facility Reference Pt			3223756.85	1451824.18	40.5708670°	-104.6945530°
Field Reference Pt			3174587.00	1430859.71	40.5144139°	-104.8720750°

WELLPATH DATUM			
Calculation method	Minimum curvature	Ensign 153 (23') (RKB) to Facility Vertical Datum	4929.00ft
Horizontal Reference Pt	Slot	Ensign 153 (23') (RKB) to Mean Sea Level	4929.00ft
Vertical Reference Pt	Ensign 153 (23') (RKB)	Ensign 153 (23') (RKB) to Ground Level at Slot (SLOT#06 DEHAAN 6X-HNC-16-07-65 (1034'FSL & 568'FWL,SEC.17))	23.00ft
MD Reference Pt	Ensign 153 (23') (RKB)	Section Origin	N 0.00, E 0.00 ft
Field Vertical Reference	Mean Sea Level	Section Azimuth	91.55°

REFERENCE WELLPATH IDENTIFICATION

Operator	BAYSWATER E&P, LLC	Well	DEHAAN 6X-HNC-16-07-65
Field	WELD COUNTY (NAD83/TRUE NORTH)	API	0512349460
Facility	SEC.17-T07N-R65W	Wellbore	DEHAAN 6X-HNC-16-07-65 AWB
Slot	SLOT#06 DEHAAN 6X-HNC-16-07-65 (1034'FSL & 568'FWL,SEC.17)		

WELLPATH DATA (198 stations) † = interpolated, ‡ = extrapolated station

MD [ft]	Inclination [°]	Azimuth [°]	TVD [ft]	Vert Sect [ft]	North [ft]	East [ft]	Grid East [US ft]	Grid North [US ft]	Latitude	Longitude	DLS [°/100ft]	Comments
0.00†	0.000	278.820	0.00	0.00	0.00	0.00	3223788.39	1451718.49	40.5705761	-104.6944429	0.00	
23.00	0.000	278.820	23.00	0.00	0.00	0.00	3223788.39	1451718.49	40.5705761	-104.6944429	0.00	
140.00	0.560	278.820	140.00	-0.57	0.09	-0.57	3223787.83	1451718.57	40.5705763	-104.6944450	0.48	FIRST BH SURFACE MWD SURVEY
231.00	0.470	284.470	230.99	-1.37	0.25	-1.37	3223787.02	1451718.72	40.5705768	-104.6944478	0.11	
322.00	0.830	274.790	321.99	-2.39	0.40	-2.38	3223786.00	1451718.86	40.5705772	-104.6944515	0.41	
412.00	0.800	271.640	411.98	-3.67	0.47	-3.66	3223784.73	1451718.92	40.5705774	-104.6944561	0.06	
502.00	0.690	261.220	501.97	-4.83	0.41	-4.83	3223783.56	1451718.85	40.5705772	-104.6944603	0.19	
592.00	2.270	304.510	591.94	-6.86	1.33	-6.83	3223781.55	1451719.76	40.5705798	-104.6944675	2.03	
681.00	4.400	318.970	680.79	-10.65	4.91	-10.52	3223777.82	1451723.30	40.5705896	-104.6944808	2.55	
771.00	5.170	315.200	770.47	-15.92	10.39	-15.65	3223772.65	1451728.73	40.5706046	-104.6944992	0.92	
860.00	5.880	312.360	859.06	-22.28	16.31	-21.84	3223766.40	1451734.59	40.5706209	-104.6945215	0.85	
949.00	7.470	319.450	947.45	-29.61	23.77	-28.97	3223759.21	1451741.99	40.5706414	-104.6945472	2.01	
1039.00	8.860	321.960	1036.54	-37.95	33.68	-37.05	3223751.04	1451751.82	40.5706685	-104.6945763	1.59	
1129.00	9.080	319.810	1125.44	-47.09	44.56	-45.90	3223742.09	1451762.63	40.5706984	-104.6946081	0.45	
1218.00	8.980	316.370	1213.34	-56.69	54.95	-55.23	3223732.67	1451772.93	40.5707269	-104.6946417	0.62	
1307.00	10.130	316.910	1301.10	-67.12	65.70	-65.37	3223722.43	1451783.58	40.5707564	-104.6946782	1.30	
1396.00	10.290	315.090	1388.69	-78.38	77.04	-76.32	3223711.37	1451794.83	40.5707876	-104.6947177	0.40	
1485.00	9.930	313.080	1476.31	-89.89	87.91	-87.54	3223700.06	1451805.60	40.5708174	-104.6947580	0.57	
1575.00	11.030	314.370	1564.81	-102.02	99.24	-99.36	3223688.13	1451816.81	40.5708485	-104.6948006	1.25	
1664.00	10.770	318.910	1652.20	-113.90	111.46	-110.92	3223676.47	1451828.93	40.5708820	-104.6948422	1.01	
1753.00	9.720	324.290	1739.78	-124.08	123.83	-120.77	3223666.51	1451841.20	40.5709160	-104.6948776	1.59	
1843.00	9.320	323.630	1828.55	-133.16	135.86	-129.52	3223657.64	1451853.16	40.5709490	-104.6949091	0.46	
1874.00	9.000	321.290	1859.15	-136.27	139.78	-132.53	3223654.60	1451857.05	40.5709598	-104.6949200	1.58	LAST BH SURFACE MWD SURVEY
1974.00	10.110	311.820	1957.77	-148.02	151.73	-143.96	3223643.06	1451868.90	40.5709926	-104.6949611	1.92	FIRST BH MWD SURVEY
2063.00	9.840	315.910	2045.42	-159.42	162.40	-155.07	3223631.85	1451879.47	40.5710219	-104.6950011	0.85	
2153.00	9.580	315.320	2134.13	-170.33	173.25	-165.69	3223621.14	1451890.22	40.5710517	-104.6950393	0.31	
2243.00	9.420	316.840	2222.90	-180.92	183.95	-175.99	3223610.74	1451900.82	40.5710810	-104.6950764	0.33	
2332.00	9.670	317.170	2310.67	-191.27	194.74	-186.06	3223600.58	1451911.53	40.5711106	-104.6951126	0.29	
2422.00	9.850	318.570	2399.36	-201.80	206.06	-196.29	3223590.24	1451922.75	40.5711417	-104.6951495	0.33	
2511.00	9.700	317.270	2487.07	-212.23	217.28	-206.42	3223580.02	1451933.87	40.5711725	-104.6951859	0.30	

REFERENCE WELLPATH IDENTIFICATION

Operator	BAYSWATER E&P, LLC	Well	DEHAAN 6X-HNC-16-07-65
Field	WELD COUNTY (NAD83/TRUE NORTH)	API	0512349460
Facility	SEC.17-T07N-R65W	Wellbore	DEHAAN 6X-HNC-16-07-65 AWB
Slot	SLOT#06 DEHAAN 6X-HNC-16-07-65 (1034'FSL & 568'FWL,SEC.17)		

WELLPATH DATA (198 stations)

MD [ft]	Inclination [°]	Azimuth [°]	TVD [ft]	Vert Sect [ft]	North [ft]	East [ft]	Grid East [US ft]	Grid North [US ft]	Latitude	Longitude	DLS [°/100ft]	Comments
2601.00	9.860	317.030	2575.76	-222.93	228.48	-216.81	3223569.52	1451944.98	40.5712033	-104.6952233	0.18	
2690.00	9.520	316.020	2663.49	-233.52	239.35	-227.12	3223559.12	1451955.76	40.5712331	-104.6952604	0.43	
2779.00	10.030	317.480	2751.20	-244.17	250.36	-237.47	3223548.67	1451966.67	40.5712633	-104.6952977	0.64	
2869.00	9.990	317.880	2839.83	-255.01	261.93	-248.00	3223538.03	1451978.14	40.5712951	-104.6953356	0.09	
2958.00	9.720	317.310	2927.52	-265.58	273.18	-258.27	3223527.66	1451989.30	40.5713259	-104.6953726	0.32	
3047.00	9.430	316.710	3015.28	-275.96	284.01	-268.36	3223517.47	1452000.04	40.5713557	-104.6954089	0.34	
3136.00	9.590	316.990	3103.06	-286.31	294.74	-278.42	3223507.31	1452010.67	40.5713851	-104.6954451	0.19	
3226.00	9.360	317.950	3191.83	-296.61	305.65	-288.44	3223497.20	1452021.50	40.5714151	-104.6954812	0.31	
3316.00	9.570	315.810	3280.60	-307.02	316.45	-298.55	3223486.98	1452032.20	40.5714447	-104.6955176	0.46	
3405.00	9.790	314.670	3368.34	-317.84	327.08	-309.09	3223476.35	1452042.73	40.5714739	-104.6955555	0.33	
3495.00	9.330	318.360	3457.09	-328.42	337.91	-319.38	3223465.96	1452053.47	40.5715036	-104.6955925	0.85	
3584.00	9.180	317.660	3544.93	-338.28	348.55	-328.96	3223456.29	1452064.02	40.5715328	-104.6956270	0.21	
3673.00	9.340	316.590	3632.77	-348.31	359.04	-338.70	3223446.45	1452074.42	40.5715616	-104.6956621	0.26	
3762.00	9.510	318.120	3720.57	-358.47	369.76	-348.57	3223436.49	1452085.05	40.5715910	-104.6956976	0.34	
3852.00	9.510	317.840	3809.33	-368.71	380.81	-358.53	3223426.43	1452096.01	40.5716214	-104.6957334	0.05	
3941.00	9.340	317.170	3897.13	-378.85	391.55	-368.37	3223416.49	1452106.67	40.5716508	-104.6957689	0.23	
4030.00	9.470	313.670	3984.93	-389.33	401.91	-378.58	3223406.19	1452116.92	40.5716793	-104.6958056	0.66	
4119.00	9.550	318.330	4072.71	-399.82	412.48	-388.78	3223395.89	1452127.40	40.5717083	-104.6958424	0.87	
4208.00	9.260	316.130	4160.52	-409.97	423.15	-398.65	3223385.92	1452137.99	40.5717376	-104.6958779	0.52	
4297.00	9.750	315.300	4248.29	-420.52	433.67	-408.92	3223375.57	1452148.41	40.5717665	-104.6959148	0.57	
4386.00	9.440	317.460	4336.05	-431.04	444.41	-419.15	3223365.23	1452159.05	40.5717959	-104.6959517	0.53	
4476.00	9.170	317.770	4424.86	-441.14	455.16	-428.96	3223355.33	1452169.71	40.5718254	-104.6959870	0.31	
4564.00	9.350	317.430	4511.72	-450.97	465.61	-438.51	3223345.68	1452180.08	40.5718541	-104.6960214	0.21	
4653.00	9.380	316.470	4599.53	-461.14	476.20	-448.40	3223335.70	1452190.57	40.5718832	-104.6960569	0.18	
4742.00	9.350	313.940	4687.34	-471.61	486.47	-458.60	3223325.41	1452200.76	40.5719114	-104.6960937	0.46	
4832.00	9.570	317.120	4776.12	-482.25	497.03	-468.95	3223314.96	1452211.22	40.5719403	-104.6961309	0.63	
4921.00	9.790	316.640	4863.85	-492.77	507.95	-479.18	3223304.63	1452222.05	40.5719703	-104.6961678	0.26	
5010.00	9.560	317.020	4951.59	-503.30	518.86	-489.41	3223294.30	1452232.86	40.5720003	-104.6962046	0.27	
5099.00	9.750	316.330	5039.33	-513.83	529.71	-499.66	3223283.96	1452243.62	40.5720301	-104.6962415	0.25	
5189.00	9.740	317.160	5128.03	-524.56	540.81	-510.10	3223273.42	1452254.62	40.5720605	-104.6962790	0.16	

REFERENCE WELLPATH IDENTIFICATION

Operator	BAYSWATER E&P, LLC	Well	DEHAAN 6X-HNC-16-07-65
Field	WELD COUNTY (NAD83/TRUE NORTH)	API	0512349460
Facility	SEC.17-T07N-R65W	Wellbore	DEHAAN 6X-HNC-16-07-65 AWB
Slot	SLOT#06 DEHAAN 6X-HNC-16-07-65 (1034'FSL & 568'FWL, SEC.17)		

WELLPATH DATA (198 stations) † = interpolated, ‡ = extrapolated station

MD [ft]	Inclination [°]	Azimuth [°]	TVD [ft]	Vert Sect [ft]	North [ft]	East [ft]	Grid East [US ft]	Grid North [US ft]	Latitude	Longitude	DLS [°/100ft]	Comments
5279.00	9.770	318.290	5216.73	-535.12	552.09	-520.35	3223263.06	1452265.81	40.5720915	-104.6963160	0.22	
5368.00	9.370	316.770	5304.49	-545.40	563.01	-530.34	3223252.98	1452276.64	40.5721214	-104.6963519	0.53	
5457.00	9.460	316.460	5392.29	-555.69	573.59	-540.34	3223242.88	1452287.13	40.5721505	-104.6963879	0.12	
5546.00	9.670	317.220	5480.05	-566.09	584.38	-550.46	3223232.67	1452297.82	40.5721801	-104.6964243	0.28	
5635.00	9.760	318.260	5567.78	-576.49	595.49	-560.55	3223222.47	1452308.84	40.5722106	-104.6964607	0.22	
5725.00	9.760	318.290	5656.47	-586.95	606.88	-570.71	3223212.21	1452320.14	40.5722419	-104.6964972	0.01	
5815.00	9.810	316.900	5745.17	-597.56	618.17	-581.02	3223201.79	1452331.34	40.5722729	-104.6965344	0.27	
5904.00	9.650	318.810	5832.89	-607.95	629.32	-591.12	3223191.60	1452342.39	40.5723035	-104.6965707	0.40	
5993.00	9.570	317.390	5920.64	-618.17	640.38	-601.04	3223181.58	1452353.36	40.5723338	-104.6966064	0.28	
6081.00	9.620	317.670	6007.41	-628.37	651.20	-610.94	3223171.58	1452364.09	40.5723635	-104.6966421	0.08	
6171.00	9.920	317.350	6096.10	-638.98	662.46	-621.26	3223161.16	1452375.26	40.5723944	-104.6966792	0.34	
6261.00	9.820	317.760	6184.77	-649.70	673.85	-631.67	3223150.65	1452386.54	40.5724257	-104.6967167	0.14	
6350.00	9.900	317.570	6272.45	-660.27	685.11	-641.93	3223140.28	1452397.72	40.5724566	-104.6967536	0.10	
6440.00	9.660	317.480	6361.15	-670.89	696.39	-652.26	3223129.86	1452408.90	40.5724875	-104.6967908	0.27	
6529.00	9.650	316.960	6448.88	-681.32	707.34	-662.39	3223119.62	1452419.76	40.5725176	-104.6968273	0.10	
6619.00	9.680	318.130	6537.61	-691.82	718.49	-672.59	3223109.32	1452430.82	40.5725482	-104.6968640	0.22	
6708.00	6.850	349.270	6625.72	-698.09	729.28	-678.58	3223103.24	1452441.55	40.5725778	-104.6968855	5.84	
6797.00	8.860	49.410	6714.01	-694.14	738.97	-674.36	3223107.37	1452451.28	40.5726044	-104.6968703	9.04	
6887.00	17.440	75.380	6801.64	-676.00	746.91	-655.99	3223125.66	1452459.38	40.5726262	-104.6968042	11.35	
6977.00	25.280	76.680	6885.39	-644.42	754.75	-624.19	3223157.39	1452467.52	40.5726477	-104.6968898	8.73	
7067.00	33.000	77.750	6963.94	-601.98	764.40	-581.48	3223200.01	1452477.54	40.5726742	-104.6965360	8.60	
7156.00	43.030	81.960	7033.98	-548.36	773.81	-527.58	3223253.82	1452487.45	40.5727001	-104.6963420	11.63	
7246.00	50.830	83.970	7095.40	-483.39	781.78	-462.38	3223318.95	1452496.01	40.5727219	-104.6961073	8.82	
7335.00	61.480	87.680	7144.91	-409.96	787.01	-388.77	3223392.50	1452501.90	40.5727363	-104.6958423	12.45	
7424.00	70.250	93.540	7181.29	-328.87	786.00	-307.68	3223473.59	1452501.64	40.5727335	-104.6955505	11.54	
7513.00	78.720	94.090	7205.08	-243.26	780.29	-222.19	3223559.13	1452496.70	40.5727179	-104.6952427	9.54	
7603.00	86.490	94.650	7216.65	-154.18	773.49	-133.27	3223648.10	1452490.71	40.5726992	-104.6949226	8.66	
7632.00†	87.705	93.844	7218.12	-125.25	771.35	-104.39	3223677.00	1452488.83	40.5726933	-104.6948187	5.03	CROSS SETBACK HEEL (1801'FSL & 460'FWL, SEC.17)
7692.00	90.220	92.180	7219.21	-65.29	768.20	-44.49	3223736.93	1452486.22	40.5726847	-104.6946031	5.03	
7782.00	90.310	94.740	7218.79	24.65	762.77	45.34	3223826.80	1452481.61	40.5726698	-104.6942797	2.85	

REFERENCE WELLPATH IDENTIFICATION

Operator	BAYSWATER E&P, LLC	Well	DEHAAN 6X-HNC-16-07-65
Field	WELD COUNTY (NAD83/TRUE NORTH)	API	0512349460
Facility	SEC.17-T07N-R65W	Wellbore	DEHAAN 6X-HNC-16-07-65 AWB
Slot	SLOT#06 DEHAAN 6X-HNC-16-07-65 (1034'FSL & 568'FWL,SEC.17)		

WELLPATH DATA (198 stations)

MD [ft]	Inclination [°]	Azimuth [°]	TVD [ft]	Vert Sect [ft]	North [ft]	East [ft]	Grid East [US ft]	Grid North [US ft]	Latitude	Longitude	DLS [°/100ft]	Comments
7872.00	90.090	92.590	7218.47	114.58	757.01	135.15	3223916.66	1452476.67	40.5726540	-104.6939564	2.40	
7961.00	90.120	90.590	7218.31	203.58	754.54	224.11	3224005.63	1452475.01	40.5726472	-104.6936362	2.25	
8051.00	90.120	89.640	7218.12	293.55	754.36	314.11	3224095.63	1452475.65	40.5726467	-104.6933123	1.06	
8141.00	90.150	90.710	7217.91	383.52	754.09	404.11	3224185.62	1452476.19	40.5726459	-104.6929883	1.19	
8230.00	90.250	90.110	7217.60	472.50	753.45	493.10	3224274.62	1452476.36	40.5726442	-104.6926679	0.68	
8320.00	90.090	89.930	7217.33	562.47	753.42	583.10	3224364.61	1452477.15	40.5726441	-104.6923440	0.27	
8409.00	90.180	86.560	7217.12	651.31	756.14	672.05	3224453.52	1452480.68	40.5726516	-104.6920238	3.79	
8499.00	90.120	88.010	7216.89	741.06	760.41	761.95	3224543.38	1452485.76	40.5726633	-104.6917002	1.61	
8588.00	91.600	91.510	7215.55	829.99	760.78	850.92	3224632.34	1452486.94	40.5726643	-104.6913800	4.27	
8677.00	91.170	91.710	7213.40	918.96	758.28	939.86	3224721.29	1452485.25	40.5726574	-104.6910598	0.53	
8767.00	91.260	90.670	7211.49	1008.94	756.41	1029.82	3224811.26	1452484.20	40.5726523	-104.6907360	1.16	
8856.00	91.230	91.010	7209.56	1097.91	755.11	1118.79	3224900.24	1452483.70	40.5726487	-104.6904158	0.38	
8945.00	91.350	91.280	7207.55	1186.88	753.33	1207.74	3224989.21	1452482.73	40.5726438	-104.6900955	0.33	
9034.00	91.350	92.100	7205.46	1275.86	750.71	1296.68	3225078.16	1452480.92	40.5726366	-104.6897754	0.92	
9123.00	91.350	91.850	7203.36	1364.83	747.64	1385.60	3225167.10	1452478.66	40.5726281	-104.6894553	0.28	
9214.00	91.390	92.270	7201.19	1455.80	744.37	1476.52	3225258.04	1452476.21	40.5726191	-104.6891281	0.46	
9304.00	91.320	92.820	7199.06	1545.76	740.37	1566.40	3225347.96	1452473.04	40.5726082	-104.6888045	0.62	
9393.00	91.390	92.420	7196.95	1634.72	736.31	1655.29	3225436.87	1452469.78	40.5725970	-104.6884846	0.46	
9482.00	91.350	91.290	7194.82	1723.69	733.43	1744.21	3225525.82	1452467.70	40.5725891	-104.6881645	1.27	
9571.00	91.570	90.130	7192.56	1812.65	732.32	1833.17	3225614.78	1452467.41	40.5725860	-104.6878442	1.33	
9661.00	91.750	90.740	7189.95	1902.60	731.64	1923.13	3225704.74	1452467.54	40.5725841	-104.6875204	0.71	
9750.00	91.660	91.620	7187.30	1991.56	729.81	2012.07	3225793.69	1452466.52	40.5725791	-104.6872003	0.99	
9840.00	91.750	91.320	7184.62	2081.52	727.50	2102.01	3225883.64	1452465.03	40.5725727	-104.6868766	0.35	
9929.00	91.690	91.560	7181.95	2170.48	725.27	2190.94	3225972.58	1452463.60	40.5725666	-104.6865565	0.28	
10018.00	91.790	91.250	7179.25	2259.43	723.08	2279.87	3226061.53	1452462.23	40.5725606	-104.6862363	0.37	
10108.00	91.750	90.840	7176.47	2349.39	721.44	2369.81	3226151.48	1452461.41	40.5725560	-104.6859126	0.46	
10198.00	91.880	91.120	7173.62	2439.34	719.91	2459.75	3226241.43	1452460.68	40.5725518	-104.6855888	0.34	
10287.00	91.750	91.170	7170.80	2528.29	718.13	2548.69	3226330.38	1452459.71	40.5725469	-104.6852687	0.16	
10376.00	91.600	90.630	7168.20	2617.25	716.73	2637.64	3226419.33	1452459.13	40.5725430	-104.6849485	0.63	
10466.00	91.660	90.900	7165.64	2707.20	715.53	2727.60	3226509.29	1452458.74	40.5725397	-104.6846247	0.31	

REFERENCE WELLPATH IDENTIFICATION

Operator	BAYSWATER E&P, LLC	Well	DEHAAN 6X-HNC-16-07-65
Field	WELD COUNTY (NAD83/TRUE NORTH)	API	0512349460
Facility	SEC.17-T07N-R65W	Wellbore	DEHAAN 6X-HNC-16-07-65 AWB
Slot	SLOT#06 DEHAAN 6X-HNC-16-07-65 (1034'FSL & 568'FWL,SEC.17)		

WELLPATH DATA (198 stations)

MD [ft]	Inclination [°]	Azimuth [°]	TVD [ft]	Vert Sect [ft]	North [ft]	East [ft]	Grid East [US ft]	Grid North [US ft]	Latitude	Longitude	DLS [°/100ft]	Comments
10555.00	91.720	91.480	7163.01	2796.16	713.68	2816.54	3226598.25	1452457.70	40.5725346	-104.6843046	0.65	
10645.00	91.600	91.850	7160.41	2886.12	711.07	2906.46	3226688.19	1452455.91	40.5725274	-104.6839809	0.43	
10735.00	91.660	92.280	7157.85	2976.08	707.83	2996.37	3226778.12	1452453.48	40.5725185	-104.6836572	0.48	
10824.00	91.540	92.160	7155.36	3065.04	704.38	3085.27	3226867.04	1452450.84	40.5725090	-104.6833372	0.19	
10913.00	91.510	92.400	7152.99	3154.00	700.84	3174.16	3226955.96	1452448.11	40.5724992	-104.6830173	0.27	
11003.00	91.570	93.960	7150.57	3243.93	695.85	3263.99	3227045.83	1452443.94	40.5724855	-104.6826939	1.73	
11092.00	89.660	93.930	7149.62	3332.85	689.73	3352.77	3227134.66	1452438.62	40.5724687	-104.6823744	2.15	
11181.00	88.860	93.790	7150.77	3421.76	683.74	3441.56	3227223.50	1452433.44	40.5724522	-104.6820547	0.91	
11271.00	88.950	93.570	7152.49	3511.69	677.96	3531.36	3227313.34	1452428.48	40.5724363	-104.6817315	0.26	
11360.00	90.310	93.860	7153.06	3600.62	672.19	3620.17	3227402.20	1452423.52	40.5724204	-104.6814118	1.56	
11449.00	90.370	93.230	7152.54	3689.56	666.69	3708.99	3227491.07	1452418.82	40.5724053	-104.6810921	0.71	
11539.00	90.150	92.190	7152.13	3779.54	662.44	3798.89	3227581.00	1452415.38	40.5723936	-104.6807685	1.18	
11627.00	90.250	88.840	7151.82	3867.52	661.65	3886.87	3227668.98	1452415.39	40.5723914	-104.6804518	3.81	
11717.00	90.150	88.240	7151.51	3957.39	663.94	3976.84	3227758.92	1452418.50	40.5723976	-104.6801280	0.68	
11806.00	90.150	89.480	7151.27	4046.29	665.71	4065.82	3227847.88	1452421.08	40.5724024	-104.6798077	1.39	
11895.00	90.250	90.980	7150.96	4135.26	665.35	4154.82	3227936.87	1452421.53	40.5724014	-104.6794873	1.69	
11984.00	90.000	92.950	7150.77	4224.26	662.30	4243.76	3228025.84	1452419.29	40.5723930	-104.6791672	2.23	
12074.00	90.710	90.860	7150.21	4314.25	659.31	4333.71	3228115.80	1452417.12	40.5723847	-104.6788434	2.45	
12163.00	90.580	90.670	7149.21	4403.23	658.12	4422.69	3228204.79	1452416.74	40.5723814	-104.6785231	0.26	
12253.00	90.650	90.850	7148.24	4493.22	656.93	4512.68	3228294.78	1452416.36	40.5723781	-104.6781992	0.21	
12342.00	90.580	91.240	7147.29	4582.21	655.30	4601.66	3228383.77	1452415.54	40.5723736	-104.6778789	0.45	
12431.00	90.680	91.510	7146.31	4671.20	653.17	4690.63	3228472.75	1452414.22	40.5723677	-104.6775586	0.32	
12520.00	90.520	92.450	7145.38	4760.20	650.09	4779.57	3228561.72	1452411.95	40.5723592	-104.6772385	1.07	
12610.00	90.580	91.560	7144.51	4850.19	646.95	4869.51	3228651.68	1452409.62	40.5723505	-104.6769148	0.99	
12699.00	90.460	89.740	7143.70	4939.17	645.94	4958.50	3228740.67	1452409.42	40.5723477	-104.6765944	2.05	
12789.00	90.490	89.660	7142.96	5029.12	646.41	5048.49	3228830.65	1452410.71	40.5723490	-104.6762705	0.09	
12878.00	90.460	91.450	7142.22	5118.10	645.54	5137.48	3228919.64	1452410.65	40.5723465	-104.6759502	2.01	
12967.00	90.680	92.330	7141.34	5207.09	642.61	5226.43	3229008.61	1452408.53	40.5723384	-104.6756300	1.02	
13056.00	90.490	91.220	7140.43	5296.09	639.85	5315.38	3229097.58	1452406.58	40.5723308	-104.6753098	1.27	
13146.00	90.580	90.670	7139.59	5386.08	638.37	5405.36	3229187.57	1452405.91	40.5723267	-104.6749859	0.62	

REFERENCE WELLPATH IDENTIFICATION

Operator	BAYSWATER E&P, LLC	Well	DEHAAN 6X-HNC-16-07-65
Field	WELD COUNTY (NAD83/TRUE NORTH)	API	0512349460
Facility	SEC.17-T07N-R65W	Wellbore	DEHAAN 6X-HNC-16-07-65 AWB
Slot	SLOT#06 DEHAAN 6X-HNC-16-07-65 (1034'FSL & 568'FWL,SEC.17)		

WELLPATH DATA (198 stations)

MD [ft]	Inclination [°]	Azimuth [°]	TVD [ft]	Vert Sect [ft]	North [ft]	East [ft]	Grid East [US ft]	Grid North [US ft]	Latitude	Longitude	DLS [°/100ft]	Comments
13236.00	89.630	90.740	7139.42	5476.06	637.26	5495.35	3229277.57	1452405.62	40.5723236	-104.6746620	1.06	
13326.00	89.690	91.890	7139.96	5566.06	635.20	5585.33	3229367.55	1452404.37	40.5723179	-104.6743381	1.28	
13416.00	89.570	93.160	7140.54	5656.04	631.23	5675.24	3229457.49	1452401.23	40.5723069	-104.6740145	1.42	
13505.00	89.540	92.670	7141.23	5745.02	626.71	5764.12	3229546.41	1452397.51	40.5722945	-104.6736946	0.55	
13595.00	89.750	92.410	7141.79	5835.00	622.72	5854.03	3229636.35	1452394.34	40.5722834	-104.6733709	0.37	
13684.00	89.690	91.970	7142.22	5923.99	619.32	5942.96	3229725.31	1452391.74	40.5722741	-104.6730508	0.50	
13774.00	89.570	92.180	7142.80	6013.99	616.06	6032.90	3229815.27	1452389.30	40.5722650	-104.6727271	0.27	
13864.00	90.400	92.000	7142.82	6103.98	612.78	6122.84	3229905.23	1452386.84	40.5722560	-104.6724033	0.94	
13954.00	90.090	91.920	7142.44	6193.98	609.70	6212.79	3229995.20	1452384.58	40.5722475	-104.6720796	0.36	
14042.00	90.150	91.410	7142.26	6281.98	607.14	6300.75	3230083.18	1452382.82	40.5722404	-104.6717629	0.58	
14132.00	90.310	90.480	7141.89	6371.97	605.66	6390.73	3230173.17	1452382.15	40.5722362	-104.6714390	1.05	
14222.00	90.180	90.200	7141.51	6461.95	605.12	6480.73	3230263.17	1452382.44	40.5722347	-104.6711151	0.34	
14312.00	90.250	90.640	7141.17	6551.93	604.46	6570.73	3230353.16	1452382.59	40.5722328	-104.6707911	0.50	
14402.00	90.310	88.510	7140.73	6641.87	605.13	6660.72	3230443.14	1452384.08	40.5722346	-104.6704672	2.37	
14490.00	90.150	91.420	7140.38	6729.83	605.18	6748.71	3230531.13	1452384.93	40.5722347	-104.6701505	3.31	
14580.00	90.030	91.150	7140.24	6819.83	603.17	6838.69	3230621.11	1452383.73	40.5722291	-104.6698266	0.33	
14668.00	90.620	90.980	7139.74	6907.82	601.53	6926.67	3230709.11	1452382.89	40.5722245	-104.6695099	0.70	
14758.00	90.520	90.130	7138.84	6997.80	600.66	7016.66	3230799.10	1452382.84	40.5722221	-104.6691860	0.95	
14847.00	90.580	91.380	7137.99	7086.79	599.49	7105.65	3230888.09	1452382.48	40.5722188	-104.6688657	1.41	
14936.00	90.000	93.090	7137.54	7175.78	596.01	7194.57	3230977.04	1452379.81	40.5722092	-104.6685456	2.03	
15025.00	89.880	93.950	7137.63	7264.73	590.55	7283.41	3231065.92	1452375.16	40.5721941	-104.6682258	0.98	
15114.00	89.940	92.990	7137.77	7353.67	585.16	7372.24	3231154.79	1452370.58	40.5721792	-104.6679060	1.08	
15203.00	90.000	91.700	7137.82	7442.66	581.52	7461.17	3231243.75	1452367.74	40.5721692	-104.6675860	1.45	
15292.00	89.910	92.000	7137.89	7531.66	578.65	7550.12	3231332.72	1452365.68	40.5721612	-104.6672658	0.35	
15381.00	90.030	92.130	7137.93	7620.66	575.44	7639.06	3231421.68	1452363.28	40.5721523	-104.6669456	0.20	
15470.00	90.060	92.620	7137.86	7709.65	571.75	7727.98	3231510.63	1452360.40	40.5721421	-104.6666255	0.55	
15559.00	89.910	93.550	7137.89	7798.62	566.96	7816.85	3231599.54	1452356.42	40.5721289	-104.6663057	1.06	
15648.00	89.940	94.530	7138.00	7887.53	560.69	7905.63	3231688.37	1452350.95	40.5721116	-104.6659861	1.10	
15737.00	90.000	94.060	7138.05	7976.43	554.03	7994.38	3231777.17	1452345.10	40.5720933	-104.6656666	0.53	
15826.00	89.970	92.430	7138.07	8065.39	548.99	8083.24	3231866.07	1452340.87	40.5720793	-104.6653468	1.83	

REFERENCE WELLPATH IDENTIFICATION

Operator	BAYSWATER E&P, LLC	Well	DEHAAN 6X-HNC-16-07-65
Field	WELD COUNTY (NAD83/TRUE NORTH)	API	0512349460
Facility	SEC.17-T07N-R65W	Wellbore	DEHAAN 6X-HNC-16-07-65 AWB
Slot	SLOT#06 DEHAAN 6X-HNC-16-07-65 (1034'FSL & 568'FWL,SEC.17)		

WELLPATH DATA (198 stations) † = interpolated, ‡ = extrapolated station

MD [ft]	Inclination [°]	Azimuth [°]	TVD [ft]	Vert Sect [ft]	North [ft]	East [ft]	Grid East [US ft]	Grid North [US ft]	Latitude	Longitude	DLS [°/100ft]	Comments
15915.00	89.880	90.840	7138.19	8154.39	546.45	8172.20	3231955.04	1452339.13	40.5720723	-104.6650266	1.79	
16004.00	89.850	90.280	7138.40	8243.37	545.58	8261.19	3232044.04	1452339.07	40.5720698	-104.6647063	0.63	
16094.00	90.000	90.160	7138.52	8333.35	545.24	8351.19	3232134.04	1452339.55	40.5720688	-104.6643823	0.21	
16183.00	89.910	91.100	7138.59	8422.33	544.26	8440.18	3232223.03	1452339.37	40.5720660	-104.6640620	1.06	
16273.00	90.150	91.340	7138.54	8512.33	542.34	8530.16	3232313.02	1452338.28	40.5720607	-104.6637381	0.38	
16362.00	89.850	91.670	7138.54	8601.33	540.00	8619.13	3232402.01	1452336.75	40.5720542	-104.6634178	0.50	
16452.00	89.850	92.710	7138.78	8691.33	536.56	8709.07	3232491.97	1452334.13	40.5720447	-104.6630941	1.16	
16541.00	89.880	92.810	7138.99	8780.31	532.28	8797.96	3232580.90	1452330.65	40.5720328	-104.6627741	0.12	
16630.00	90.090	92.130	7139.01	8869.29	528.44	8886.88	3232669.84	1452327.62	40.5720222	-104.6624541	0.80	
16719.00	90.250	92.170	7138.75	8958.29	525.10	8975.82	3232758.80	1452325.09	40.5720129	-104.6621340	0.19	
16809.00	90.120	91.890	7138.45	9048.28	521.92	9065.76	3232848.77	1452322.72	40.5720041	-104.6618102	0.34	
16899.00	90.120	90.330	7138.27	9138.28	520.17	9155.74	3232938.76	1452321.79	40.5719992	-104.6614863	1.73	
16988.00	90.000	90.140	7138.17	9227.25	519.81	9244.74	3233027.75	1452322.24	40.5719981	-104.6611660	0.25	
17077.00	90.000	88.510	7138.17	9316.18	520.86	9333.73	3233116.73	1452324.09	40.5720009	-104.6608456	1.83	
17166.00	89.880	90.120	7138.27	9405.11	521.92	9422.72	3233205.70	1452325.96	40.5720037	-104.6605253	1.81	
17209.00†	89.932	91.271	7138.34	9448.11	521.40	9465.72	3233248.70	1452325.83	40.5720023	-104.6603705	2.68	CROSS SETBACK TOE (1827'FSL & 460'FEL,SEC.16)
17240.00	89.970	92.100	7138.36	9479.11	520.49	9496.70	3233279.69	1452325.20	40.5719997	-104.6602590	2.68	LAST BH MWD SURVEY
17265.00‡	89.970	92.100	7138.38	9504.11	519.57	9521.69	3233304.68	1452324.51	40.5719972	-104.6601691	0.00	PROJECTION TO BIT (1826'FSL & 404'FEL,SEC.16)

REFERENCE WELLPATH IDENTIFICATION

Operator	BAYSWATER E&P, LLC	Well	DEHAAN 6X-HNC-16-07-65
Field	WELD COUNTY (NAD83/TRUE NORTH)	API	0512349460
Facility	SEC.17-T07N-R65W	Wellbore	DEHAAN 6X-HNC-16-07-65 AWB
Slot	SLOT#06 DEHAAN 6X-HNC-16-07-65 (1034'FSL & 568'FWL,SEC.17)		

TARGETS

Name	TVD [ft]	North [ft]	East [ft]	Grid East [US ft]	Grid North [US ft]	Latitude	Longitude	Shape
SEC.16-T07N-R65W	0.00	105.98	-30.58	3223756.85	1451824.18	40.5708670	-104.6945530	polygon
	2D Polygon: dimensions not calculated							
SEC.16/17-T07N-R65W (SB 460')	0.00	105.98	-30.58	3223756.85	1451824.18	40.5708670	-104.6945530	polygon
	2D Polygon: dimensions not calculated							
SEC.17-T07N-R65W	0.00	105.98	-30.58	3223756.85	1451824.18	40.5708670	-104.6945530	polygon
	2D Polygon: dimensions not calculated							
DEHAAN 6X-HNC-16-07-65 BHL REV-1 (1832'FSL & 460'FEL,SEC.16)	7119.00	526.77	9466.42	3233249.35	1452331.21	40.5720170	-104.6603680	point
DEHAAN 6X-HNC-16-07-65 BHL REV-2 (1832'FSL & 460'FEL,SEC.16)	7129.00	526.77	9466.42	3233249.35	1452331.21	40.5720170	-104.6603680	point
DEHAAN 6X-HNC-16-07-65 LP REV-1 (1816'FSL & 460'FWL,SEC.17)	7219.00	786.17	-104.20	3223677.06	1452503.65	40.5727340	-104.6948180	point

WELLPATH COMPOSITION - Ref Wellbore: DEHAAN 6X-HNC-16-07-65 AWB Ref Wellpath: DEHAAN 6X-HNC-16-07-65 AWP

Start MD [ft]	End MD [ft]	Positional Uncertainty Model	Log Name/Comment	Wellbore	Survey Date
23.00	1874.00	OWSG MWD rev2 + IFR1 + Multi-Station Correction	OWSG MWD rev2 + IFR1 + MS 13-1/2" <140 - 1874>	DEHAAN 6X-HNC-16-07-65 AWB	1/3/2023
1874.00	17265.00	OWSG MWD rev2 + IFR1 + Multi-Station Correction	OWSG MWD rev2 + IFR1 + MS 8-1/2" <1974 - 17240>	DEHAAN 6X-HNC-16-07-65 AWB	1/6/2023

REFERENCE WELLPATH IDENTIFICATION			
Operator	BAYSWATER E&P, LLC	Well	DEHAAN 6X-HNC-16-07-65
Field	WELD COUNTY (NAD83/TRUE NORTH)	API	0512349460
Facility	SEC.17-T07N-R65W	Wellbore	DEHAAN 6X-HNC-16-07-65 AWB
Slot	SLOT#06 DEHAAN 6X-HNC-16-07-65 (1034'FSL & 568'FWL,SEC.17)		

WELLPATH COMMENTS				
MD [ft]	Inclination [°]	Azimuth [°]	TVD [ft]	Comment
140.00	0.560	278.820	140.00	FIRST BH SURFACE MWD SURVEY
1874.00	9.000	321.290	1859.15	LAST BH SURFACE MWD SURVEY
1974.00	10.110	311.820	1957.77	FIRST BH MWD SURVEY
7632.00	87.705	93.844	7218.12	CROSS SETBACK HEEL (1801'FSL & 460'FWL,SEC.17)
17209.00	89.932	91.271	7138.34	CROSS SETBACK TOE (1827'FSL & 460'FEL,SEC.16)
17240.00	89.970	92.100	7138.36	LAST BH MWD SURVEY
17265.00	89.970	92.100	7138.38	PROJECTION TO BIT (1826'FSL & 404'FEL,SEC.16)