



Bayswater Exploration & Production LLC LONG STRING POST JOB REPORT

**DEHAAN #7X-HNC-16-07-65 05-123-49457
S:17 T:7N R:65W Weld CO**

CallSheet #: 85742
Proposal #: 66881



LONG STRING Post Job Report

Attention: Trevor Smith | (720) 335-9045 | trevor.smith@iptenergyservices.com
Bayswater Exploration & Production LLC
730 17TH STREET | DENVER, CO 80202

Dear Trevor Smith,

Thank you for the opportunity to provide cementing services on this well. American Cementing strives to achieve complete customer satisfaction. If you have any questions regarding the services or data provided, please contact American Cementing at any time.

Sincerely,

Aimee Sankovich

Field Engineer I | (307) 689-0323 | aimee.sankovich@americancementing.com

Field Office 1716 E Allison Rd, Cheyenne, WY 82007
Phone: (307) 414-0049

Job Details & Summary

Geometry

Type	Function	OD (in)	ID (in)	Weight (lb/ft)	Top (ft)	Bottom (ft)	Excess (%)
Casing	Outer	9.625	8.921	36	0	1911	0
Open Hole	Outer		8.5		1911	17228	5
Casing	Inner	5.5	4.778	20	0	17228	0

Equipment / People

Unit Type	Unit
Cement Trailer Float	CTF-003
Field Storage Silo	FSS-448
Field Storage Silo	FSS-461
Field Storage Silo	FSS-436
Cement Trailer Float	CTF-566
Cement Pump Float	CPF-184
Light Duty Vehicles	LDV-013

Timing

Event	Date/Time
Call Out	2/12/2023 08:00
Depart Facility	2/12/2023 11:00
On Location	2/12/2023 12:30
Rig Up Iron	2/12/2023 13:00
Job Started	2/12/2023 15:58
Job Completed	2/12/2023 19:37
Rig Down Iron	2/12/2023 20:00
Depart Location	2/12/2023 22:00

General Job Information

Metrics	Value
Well Fluid Density	10.1 lb/gal
Well Fluid Type	OBM
Rig Circulation Vol	1440 bbls
Rig Circulation Time	3 hours
Calculated Displacement	382 bbls
Actual Displacement	382 bbls
Total Spacer to Surface	80 bbls
Total CMT to Surface	17 bbls

Job Details

Metrics	Value
Flare Prior to Job	No
Flare Prior to Job	0 units
Flare During Job	No
Flare During Job	0 units
Flare at End of Job	No
Flare at End of Job	0 units
Well Full Prior to Job	Yes
Well Fluid Density Into Well	10.1 lb/gal
Well Fluid Density Out of Well	10.1 lb/gal

Job Details (cont.)

Metrics	Value
BHCT	225 °F
BHST	225 °F

Water Analysis

Metrics	Value	Recommended
Water Source	Upright Rig Tank	
Temperature	60 °F	50-80 °F
pH Level	7	5.5-8.5
Chlorides	0 mg/L	0-3000 mg/L
Total Alkalinity	140	0-1000
Total Hardness	250 mg/L	0-500 mg/L
Carbonates	40 mg/L	0-100 mg/L
Sulfates	<200 mg/L	0-1500 mg/L
Potassium	0 mg/L	0-3000 mg/L
Iron	0 mg/L	0-300 mg/L

Circulation

Lost Circulation Experienced
No

Job Execution Information

Fluid	Product	Function	Density (lb/gal)	Yield (ft ³ /sk)	Water Rq. (gal/sk)	Water Rq. (gal/bbl)	Volume (sks)	Volume (bbl)	Designed Top (ft)
1	EZ Spacer II	Spacer	12.00					40.00	0
2	EZ Spacer II	Spacer	11.50					20.00	0
3	EZ Spacer II	Spacer	11.00					20.00	0
4	Lead	Lead	13.20	1.79	9.27		930.00	296.96	0
5	Tail	Tail	13.50	1.50	7.57		1700.00	455.29	6693
6	Retarded Water + Chems	Displacement	8.37			41.43		10.00	16762
7	Water + Chems	DisplacementFinal	8.37			41.53		372.00	0

Job Fluid Details

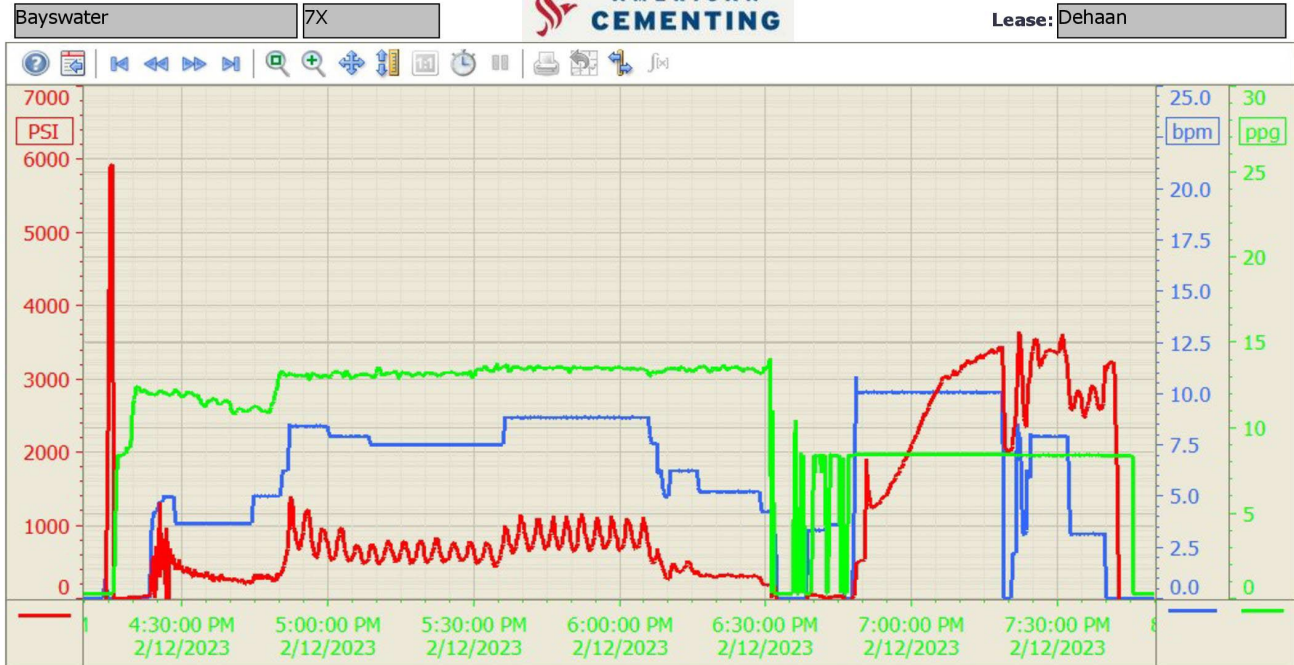
Fluid	Type	Fluid	Product	Function	Conc.	Uom
1	Spacer	EZ Spacer II	WEIGHTING ADDITIVE, W-11	Heavyweight	242.31	lb/bbl
1	Spacer	EZ Spacer II	GW-86	Viscosifier	1.20	lb/bbl
1	Spacer	EZ Spacer II	R-31	Retarder	0.50	lb/bbl
1	Spacer	EZ Spacer II	R-7C	Retarder	2.00	lb/bbl
1	Spacer	EZ Spacer II	Surfactant, S-801c	Surfactant	1.00	gal/bbl
2	Spacer	EZ Spacer II	WEIGHTING ADDITIVE, W-11	Heavyweight	242.31	lb/bbl
2	Spacer	EZ Spacer II	GW-86	Viscosifier	1.20	lb/bbl
2	Spacer	EZ Spacer II	R-31	Retarder	0.50	lb/bbl
2	Spacer	EZ Spacer II	R-7C	Retarder	2.00	lb/bbl
2	Spacer	EZ Spacer II	Surfactant, S-801c	Surfactant	1.00	gal/bbl
3	Spacer	EZ Spacer II	WEIGHTING ADDITIVE, W-11	Heavyweight	242.31	lb/bbl
3	Spacer	EZ Spacer II	GW-86	Viscosifier	1.20	lb/bbl
3	Spacer	EZ Spacer II	R-31	Retarder	0.50	lb/bbl
3	Spacer	EZ Spacer II	R-7C	Retarder	2.00	lb/bbl
3	Spacer	EZ Spacer II	Surfactant, S-801c	Surfactant	1.00	gal/bbl
4	Lead	Lead	ASTM TYPE IL	Cement	70.00	%
4	Lead	Lead	FLY ASH (ROCKIES)	Extender	30.00	%
4	Lead	Lead	BENTONITE	Viscosifier	2.00	%BWOB
4	Lead	Lead	EC-2	BondEnhancer	3.00	%BWOB
4	Lead	Lead	FL-24	FluidLoss	0.20	%BWOB
4	Lead	Lead	FL-66	FluidLoss	0.30	%BWOB
4	Lead	Lead	FP-24	Defoamer	0.30	%BWOB
4	Lead	Lead	GW-86	Viscosifier	0.10	%BWOB
4	Lead	Lead	SR-20	Retarder	0.20	%BWOB
4	Lead	Lead	XCem-1008	Extender	7.00	lb/sk
5	Tail	Tail	CLASS G	Cement	50.00	%
5	Tail	Tail	FLY ASH (ROCKIES)	Extender	50.00	%
5	Tail	Tail	BENTONITE	Viscosifier	4.00	%BWOB
5	Tail	Tail	FL-24	FluidLoss	0.20	%BWOB
5	Tail	Tail	FP-24	Defoamer	0.30	%BWOB
5	Tail	Tail	GW-86	Viscosifier	0.10	%BWOB
5	Tail	Tail	SR-20	Retarder	0.12	%BWOB
5	Tail	Tail	STATIC FREE	Other	0.01	lb/sk
6	Displacement	Retarded Water + Chems	BIOCIDE,BIOC11139W	Biocide	0.01	gal/bbl
6	Displacement	Retarded Water + Chems	CI-27	Other	0.21	gal/bbl
6	Displacement	Retarded Water + Chems	OXYGEN SCAVENGER, OS-30	Other	0.17	gal/bbl
6	Displacement	Retarded Water + Chems	ResCare CS-2	ClayProtection	0.08	gal/bbl
6	Displacement	Retarded Water + Chems	SR-61L	Retarder	0.10	gal/bbl
7	DisplacementFinal	Water + Chems	BIOCIDE,BIOC11139W	Biocide	0.01	gal/bbl
7	DisplacementFinal	Water + Chems	CI-27	Other	0.21	gal/bbl
7	DisplacementFinal	Water + Chems	OXYGEN SCAVENGER, OS-30	Other	0.17	gal/bbl
7	DisplacementFinal	Water + Chems	ResCare CS-2	ClayProtection	0.08	gal/bbl

Job Logs

Line	Event	Date (MM/DD/YY)	Time (HH:MM)	Density (lb/gal)	Pump Rate (bpm)	Pump Volume (bbls)	Pipe Pressure (psi)	Comment
1	Callout	2/12/2023	08:00					Crew called out requested on location for 1430
2	Depart For Location	2/12/2023	11:00					Crew departed for location
3	Arrive On Location	2/12/2023	12:30					Crew arrived on location
4	Safety Meeting	2/12/2023	12:45					Safety meeting
5	Rig Up Iron	2/12/2023	13:00					Spotted and rigged up all equipment
6	Waiting	2/12/2023	14:30					Waiting on rig to finish circulating well
7	Safety Meeting	2/12/2023	15:30					Safety meeting
8	Fill Lines	2/12/2023	15:59	8.34	3	5	400	Fill lines with 5 bbls water
9	Pressure Test Lines	2/12/2023	16:00					Pressure test lines to 6000 psi
10	Pump Spacer	2/12/2023	16:17		6	80	500	Pump 40 bbls spacer @ 12 ppg, 20 @ 11.5 ppg, 20 @ 11 ppg
11	Pump Lead Cement	2/12/2023	16:44	13.2	8	296	900	Pump 296 bbls lead cement @ 13.2 ppg (930 sks, 1.79 Y, 9.27 gal/sk)
12	Pump Tail Cement	2/12/2023	17:34	13.5	8	454	1000	Pump 454 bbls tail cement @ 13.5 ppg (1700 sks, 1.50 Y, 7.57 gal/sk)
13	Shutdown	2/12/2023	18:28					Shutdown
14	Clean Pumps and Lines	2/12/2023	18:30					Wash pumps and lines to pit
15	Drop Top Plug	2/12/2023	18:41					Drop top plug
16	Pump Displacement	2/12/2023	18:42	8.34	10	360	3600	Pump 382 bbls displacement
17	Spacer Back to Surface	2/12/2023	19:13					Spacer back to surface, 80 bbls back
18	Slow Pump Rate	2/12/2023	19:27	8.34	3	22	2700	Slow pump rate to 3 bpm
19	Cement Back to Surface	2/12/2023	19:30					Cement back to surface, 17 bbls back
20	Land Plug	2/12/2023	19:34					Land plug at 2800 psi, took to 3300 psi
21	Check Floats	2/12/2023	19:37					Check floats, floats holding 4.5 bbls back
22	Safety Meeting	2/12/2023	19:45					Safety meeting
23	Rig Down Iron	2/12/2023	20:00					Rigged down all equipment
24	Depart Location	2/12/2023	22:00					Crew departed location

Pump Diagrams

Summary Trend



2/12/2023 8:10:10 PM