



Bayswater Exploration & Production LLC

SURFACE POST JOB REPORT

DEHAAN #7X-HNC-16-07-65 05-123-49457
S:17 T:7N R:65W Weld CO

CallSheet #: 85281
Proposal #: 65902



SURFACE Post Job Report

Attention: Trevor Smith | (720) 335-9045 | trevor.smith@iptenergyservices.com
Bayswater Exploration & Production LLC
730 17TH STREET | DENVER, CO 80202

Dear Trevor Smith,

Thank you for the opportunity to provide cementing services on this well. American Cementing strives to achieve complete customer satisfaction. If you have any questions regarding the services or data provided, please contact American Cementing at any time.

Sincerely,

Aimee Sankovich

Field Engineer I | (307) 689-0323 | aimee.sankovich@americancementing.com

Field Office 1716 E Allison Rd, Cheyenne, WY 82007
Phone: (307) 414-0049

Job Details & Summary

Geometry

Type	Function	OD (in)	ID (in)	Weight (lb/ft)	Top (ft)	Bottom (ft)	Excess (%)
Open Hole	Outer		13.5		0	1860	25
Casing	Inner	9.625	8.921	36	0	1860	0

Equipment / People

Unit Type	Unit
Field Storage Silo	FSS-448
Cement Trailer Float	CTF-001
Light Duty Vehicles	LDV-049
Cement Pump Float	CPF-011

Timing

Event	Date/Time
ERTS	
Call Out	1/1/2023 03:30
Depart Facility	1/1/2023 07:00
On Location	1/1/2023 08:15
Rig Up Iron	1/1/2023 08:30
Job Started	1/1/2023 13:56
Job Completed	1/1/2023 15:03
Rig Down Iron	1/1/2023 15:30
Depart Location	1/1/2023 16:30

General Job Information

Metrics	Value
Well Fluid Density	8.6 lb/gal
Well Fluid Type	WBM
Rig Circulation Vol	300 bbls
Rig Circulation Time	0.5 hours
Calculated Displacement	144.5 bbls
Actual Displacement	144 bbls
Total Spacer to Surface	20 bbls
Total CMT to Surface	34 bbls
Well Topped Out	No
Top Out Volume	0 bbls

Casing Equipment

Type	Description	Qty
CENTRALIZER,9-5/8"NON-WELD	Centralizers	22

Job Details

Metrics	Value
Flare Prior to Job	NO
Flare Prior to Job	0 units
Flare During Job	NO
Flare During Job	0 units
Flare at End of Job	NO
Flare at End of Job	0 units
Well Full Prior to Job	YES
Well Fluid Density Into Well	8.6 lb/gal
Well Fluid Density Out of Well	8.6 lb/gal

Job Details (cont.)

Metrics	Value
BHCT	86 °F
BHST	110 °F

Water Analysis

Metrics	Value	Recommended
Water Source	Upright Rig Tank	
Temperature	52 °F	50-80 °F
pH Level	7	5.5-8.5
Chlorides	0 mg/L	0-3000 mg/L
Total Alkalinity	140	0-1000
Total Hardness	250 mg/L	0-500 mg/L
Carbonates	40 mg/L	0-100 mg/L
Sulfates	<200 mg/L	0-1500 mg/L
Potassium	0 mg/L	0-3000 mg/L
Iron	0 mg/L	0-300 mg/L

Circulation

Lost Circulation Experienced

NO

Job Execution Information

Fluid	Product	Function	Density (lb/gal)	Yield (ft ³ /sk)	Water Rq. (gal/sk)	Water Rq. (gal/bbl)	Volume (sks)	Volume (bbl)	Designed Top (ft)
1	Fresh Water	Flush	8.34			42.00		20.00	0
2	ACem S100.3.1C	Lead	12.00	2.50	14.57		333.00	148.02	0
3	ACem S100.3.1C	Tail	12.50	2.18	12.25		149.00	57.81	1360
4	D822	DisplacementFinal	8.34			42.00		139.00	0

Job Fluid Details

Fluid	Type	Fluid	Product	Function	Conc.	Uom
2	Lead	ACem S100.3.1C	ASTM TYPE IL	Cement	100.00	%
2	Lead	ACem S100.3.1C	A-10	Accelerator	5.00	%BWOB
2	Lead	ACem S100.3.1C	A-2	Accelerator	3.00	lb/sk
2	Lead	ACem S100.3.1C	A-7P	Accelerator	2.00	lb/sk
2	Lead	ACem S100.3.1C	FP-24	Defoamer	0.30	%BWOB
2	Lead	ACem S100.3.1C	IntegraSeal POLI	LostCirculation	0.13	lb/sk
3	Tail	ACem S100.3.1C	ASTM TYPE IL	Cement	100.00	%
3	Tail	ACem S100.3.1C	A-10	Accelerator	5.00	%BWOB
3	Tail	ACem S100.3.1C	A-2	Accelerator	2.00	lb/sk
3	Tail	ACem S100.3.1C	A-7P	Accelerator	2.00	lb/sk
3	Tail	ACem S100.3.1C	FP-24	Defoamer	0.30	%BWOB
3	Tail	ACem S100.3.1C	IntegraSeal POLI	LostCirculation	0.13	lb/sk

Job Logs

Line	Event	Date (MM/DD/YY)	Time (HH:MM)	Density (lb/gal)	Pump Rate (bpm)	Pump Volume (bbls)	Pipe Pressure (psi)	Comment
1	Call Out	1/1/2023	03:30					Rig dispatched for location. Requested on location at 14:00
2	Depart For Location	1/1/2023	07:00					Departed for location.
3	Arrive On Location	1/1/2023	08:15					Crew arrived on location.
4	Safety Meeting	1/1/2023	08:20					Pre rig up safety meeting.
5	Spot Units	1/1/2023	08:25					Spotted units.
6	Rig Up Iron	1/1/2023	08:30					Rigged up all equipment and iron.
7	Waiting	1/1/2023	09:30					Waiting on rig to finish running casing and circulate the well.
8	Safety Meeting	1/1/2023	13:45					Pre job safety meeting with rig and cement crews.
9	Fill Lines	1/1/2023	13:56	8.34	4.8	5	100	Filled lines with 5 BBLS of fresh water.
10	Pressure Test Lines	1/1/2023	13:59				3150	Pressure tested lines to 3150 PSI.
11	Pump Spacer	1/1/2023	14:02	8.34	4.4	20	125	Pumped 20 BBLS of dyed water spacer. Verified returns were good.
12	Pump Lead Cement	1/1/2023	14:08	12	8	148	600	Pumped 148 BBLS of 12 PPG Lead cement, (333 SKS, 2.50Y, 14.57 GPS, 116 BBLS of mix water). Visually verified returns were good and density was accurate with mud scale.
13	Pump Tail Cement	1/1/2023	14:22	12.5	7.2	58	450	Pumped 58 BBLS of 12.5 PPG Tail Cement, (149 SKS, 2.18 Y, 12.25 GPS. Visually verified returns were good and density was accurate with mudscale.
14	Shut Down	1/1/2023	14:35					Shut Down
15	Wash Pumps And Lines	1/1/2023	14:37					Rinsed mixing system.
16	Drop Bottom Plug	1/1/2023	14:38					Dropped Plug.
17	Pump Displacement	1/1/2023	14:40	8.34	8	135	600	Began displacement by washing up on top of the plug. Pumped 145 BBLS of fresh water. Visually verified returns were good. Slowed rate at 100 away to 5.3 BPM due to foam issues causing the fisher pump to not be able to keep up with returns. Pressure was 380.
18	Spacer To Surface	1/1/2023	14:50	8.34	8		709	20 BBLS of spacer returned to surface.
19	Cement To Surface	1/1/2023	14:53	8.34	5.3		380	34 BBLS of cement returned to surface.
20	Slow Rate	1/1/2023	14:59	8.34	3.2	9	460	Slowed rate to 2.8 BPM at 135 BBLS away
21	Land Plug	1/1/2023	15:02					Plug landed at 145 BBLS away. Took from 463 PSI to 1025 PSI. Total water used for the job was 350 BBLS.
22	Check Floats	1/1/2023	15:03					Floats holding, .5 BBLS back.
23	Safety Meeting	1/1/2023	15:10					Pre rig down safety meeting.
24	Rig Down Iron	1/1/2023	15:30					Rigged down all iron and equipment.
25	Depart From Location	1/1/2023	16:30					Departed from location.

Pump Diagrams

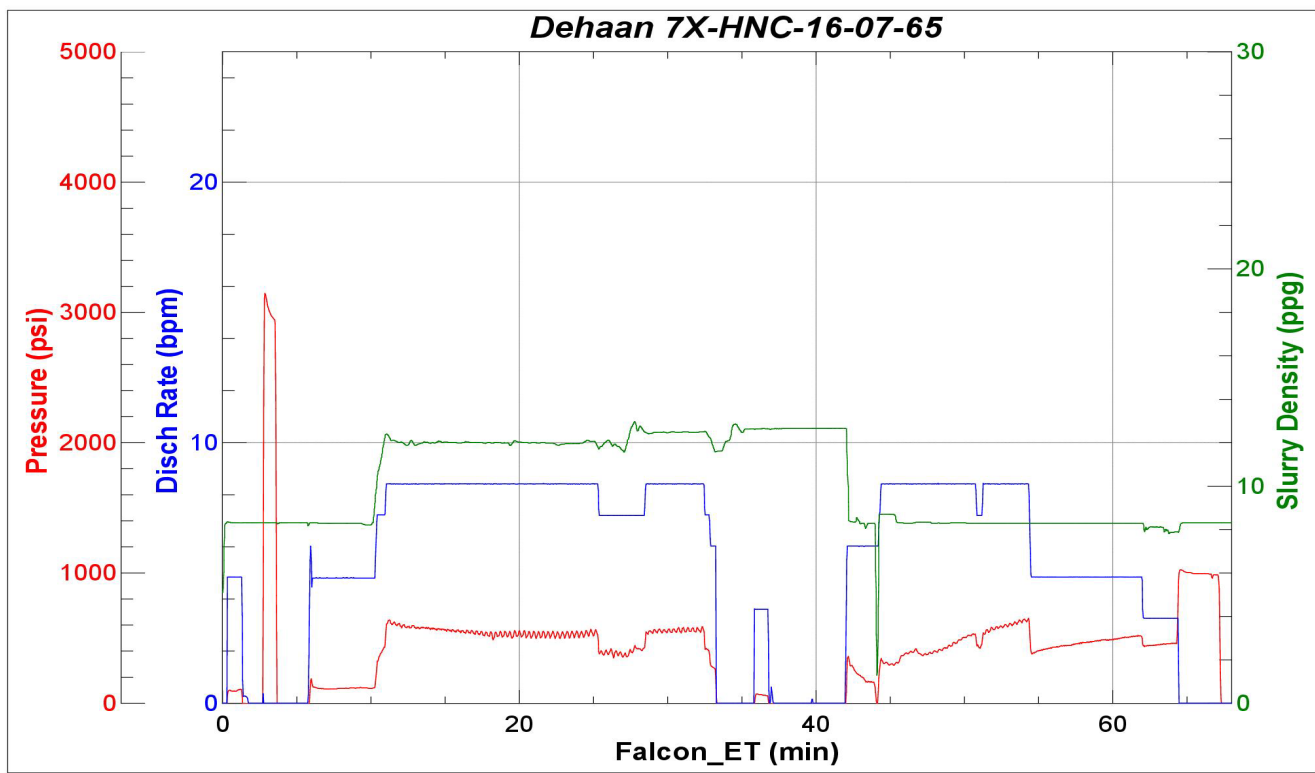


JobMaster Program Version 5.01C1

Job Number: 85281

Customer: Bayswater

Well Name: Dehaan 7X-HNC-16-07-65



American Cementing

Job Start: Sunday, January 01, 2023