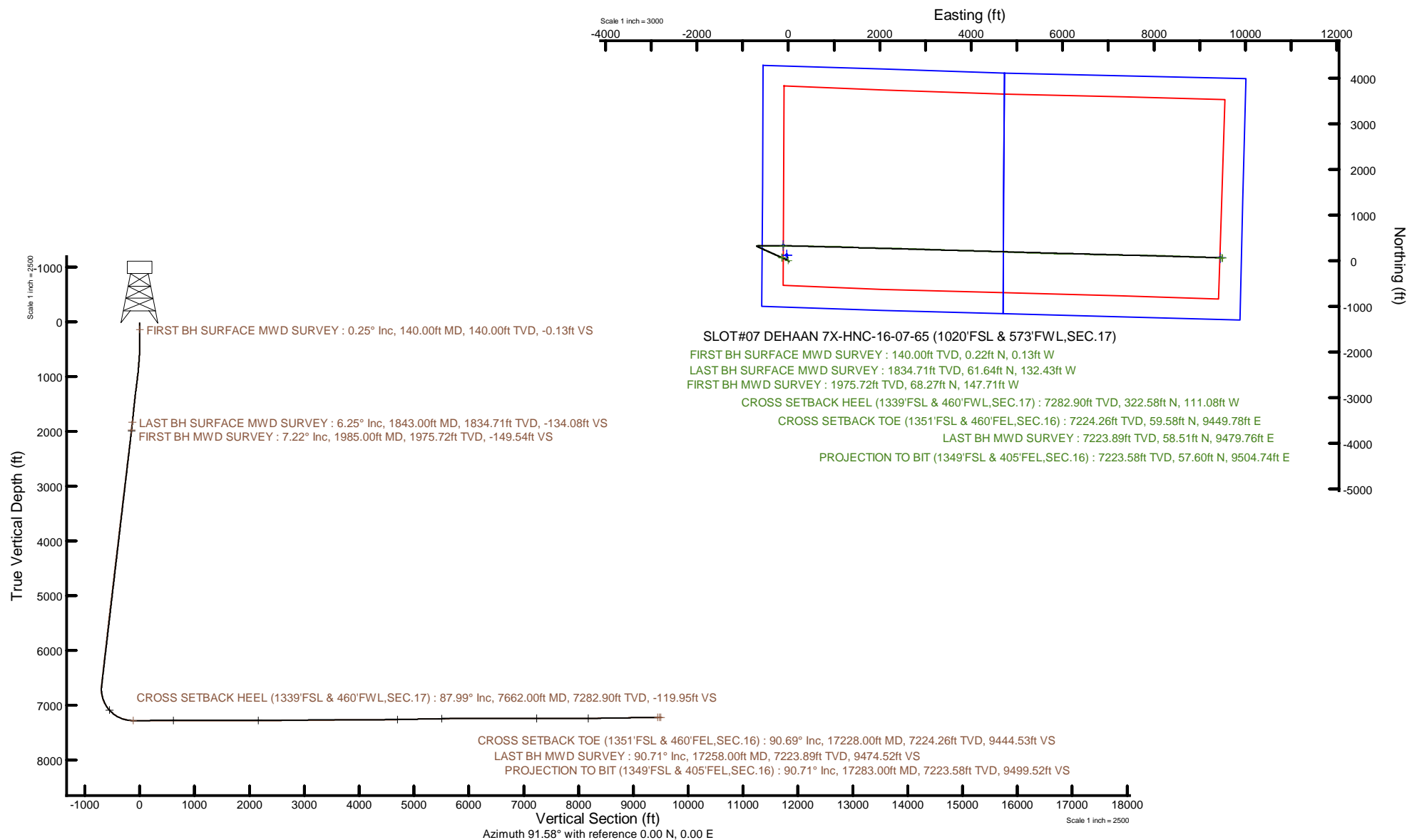


Location:	COLORADO	Slot:	SLOT#07 DEHAAN 7X-HNC-16-07-65 (1020FSL & 573FWL, SEC.17)
Field:	WELD COUNTY (NAD83/TRUE NORTH)	Well:	DEHAAN 7X-HNC-16-07-65
Facility:	SEC.17-T07N-R65W	Wellbore:	DEHAAN 7X-HNC-16-07-65 PWB



Plot reference welpath is DEHAAN 7X+HNC-16-07-65 PWP Rev-B.0	Grid System: NAD83 / Lambert Colorado SP, Northern Zone (501), US feet
True vertical depths are referenced to Ensign 153 (23) (RKB)	North Reference: True north
Reference welpath measured depths are referenced to Ensign 153 (23) (RKB)	Scale: True distance
Ensign 153 (23) (RKB) to Mean Sea Level: 4929 feet	Coordinates are in feet referenced to Sdot
Mean Sea Level to Ground level (At Sdot: SLO7K07 DEHAAN 7X+HNC-16-07-65 (1020FSL & 573FWL SEC.17)): -4906 feet	Depths are in feet
Offset welpath MDs are referenced to each path's default MD datum	Created by: painrset on 2023-03-31; Database: Baywater



# Actual Wellpath Report

DEHAAN 7X-HNC-16-07-65 AWP

Page 1 of 10

REFERENCE WELLPATH IDENTIFICATION			
Operator	BAYSWATER E&P, LLC	Well	DEHAAN 7X-HNC-16-07-65
Field	WELD COUNTY (NAD83/TRUE NORTH)	API	0512349457
Facility	SEC.17-T07N-R65W	Wellbore	DEHAAN 7X-HNC-16-07-65 AWB
Slot	SLOT#07 DEHAAN 7X-HNC-16-07-65 (1020'FSL & 573'FWL,SEC.17)		

REPORT SETUP INFORMATION			
Projection System	NAD83 / Lambert Colorado SP, Northern Zone (501), US feet	Software System	WellArchitect® 6.0
North Reference	True	User	Painsetr
Scale	0.999972	Report Generated	3/31/2023 at 10:57:48 AM
Convergence at slot	0.52° East	Database	Bayswater

WELLPATH LOCATION						
	Local coordinates		Grid coordinates		Geographic coordinates	
	North[ft]	East[ft]	Easting[US ft]	Northing[US ft]	Latitude	Longitude
Slot Location	-120.09	35.04	3223792.98	1451704.42	40.5705374°	-104.6944269°
Facility Reference Pt			3223756.85	1451824.18	40.5708670°	-104.6945530°
Field Reference Pt			3174587.00	1430859.71	40.5144139°	-104.8720750°

WELLPATH DATUM			
Calculation method	Minimum curvature	Ensign 153 (23') (RKB) to Facility Vertical Datum	4929.00ft
Horizontal Reference Pt	Slot	Ensign 153 (23') (RKB) to Mean Sea Level	4929.00ft
Vertical Reference Pt	Ensign 153 (23') (RKB)	Ensign 153 (23') (RKB) to Ground Level at Slot (SLOT#07 DEHAAN 7X-HNC-16-07-65 (1020'FSL & 573'FWL,SEC.17))	23.00ft
MD Reference Pt	Ensign 153 (23') (RKB)	Section Origin	N 0.00, E 0.00 ft
Field Vertical Reference	Mean Sea Level	Section Azimuth	91.58°

### REFERENCE WELLPATH IDENTIFICATION

Operator	BAYSWATER E&P, LLC	Well	DEHAAN 7X-HNC-16-07-65
Field	WELD COUNTY (NAD83/TRUE NORTH)	API	0512349457
Facility	SEC.17-T07N-R65W	Wellbore	DEHAAN 7X-HNC-16-07-65 AWB
Slot	SLOT#07 DEHAAN 7X-HNC-16-07-65 (1020'FSL & 573'FWL,SEC.17)		

### WELLPATH DATA (197 stations) † = interpolated, ‡ = extrapolated station

MD [ft]	Inclination [°]	Azimuth [°]	TVD [ft]	Vert Sect [ft]	North [ft]	East [ft]	Grid East [US ft]	Grid North [US ft]	Latitude	Longitude	DLS [°/100ft]	Comments
0.00†	0.000	330.180	0.00	0.00	0.00	0.00	3223792.97	1451704.42	40.5705374	-104.6944269	0.00	
23.00	0.000	330.180	23.00	0.00	0.00	0.00	3223792.97	1451704.42	40.5705374	-104.6944269	0.00	
140.00	0.250	330.180	140.00	-0.13	0.22	-0.13	3223792.85	1451704.64	40.5705380	-104.6944273	0.21	FIRST BH SURFACE MWD SURVEY
231.00	0.470	338.640	231.00	-0.38	0.74	-0.36	3223792.61	1451705.16	40.5705394	-104.6944282	0.25	
322.00	0.220	56.250	322.00	-0.38	1.19	-0.35	3223792.61	1451705.60	40.5705406	-104.6944282	0.52	
412.00	0.300	40.160	412.00	-0.10	1.46	-0.06	3223792.90	1451705.88	40.5705414	-104.6944271	0.12	
501.00	1.580	312.170	500.98	-0.88	2.46	-0.82	3223792.14	1451706.88	40.5705441	-104.6944298	1.80	
592.00	3.930	293.870	591.87	-4.72	4.57	-4.60	3223788.34	1451708.95	40.5705499	-104.6944434	2.73	
681.00	4.070	296.830	680.66	-10.40	7.23	-10.21	3223782.70	1451711.55	40.5705572	-104.6944636	0.28	
771.00	4.680	291.150	770.39	-16.75	9.99	-16.48	3223776.41	1451714.26	40.5705648	-104.6944862	0.83	
860.00	5.020	285.310	859.08	-23.95	12.33	-23.62	3223769.24	1451716.54	40.5705712	-104.6945119	0.67	
949.00	7.280	296.320	947.56	-32.86	15.86	-32.43	3223760.40	1451719.98	40.5705809	-104.6945436	2.85	
1039.00	8.010	303.530	1036.76	-43.36	21.85	-42.77	3223750.01	1451725.88	40.5705974	-104.6945808	1.34	
1129.00	7.560	293.290	1125.94	-54.18	27.66	-53.44	3223739.29	1451731.59	40.5706133	-104.6946192	1.62	
1218.00	7.640	290.030	1214.16	-65.23	32.00	-64.37	3223728.32	1451735.83	40.5706252	-104.6946586	0.49	
1307.00	7.350	288.920	1302.40	-76.28	35.87	-75.32	3223717.34	1451739.60	40.5706358	-104.6946980	0.36	
1396.00	7.350	296.200	1390.67	-86.89	40.23	-85.81	3223706.80	1451743.87	40.5706478	-104.6947358	1.05	
1485.00	6.720	296.140	1479.00	-96.80	45.04	-95.59	3223696.98	1451748.59	40.5706610	-104.6947710	0.71	
1575.00	6.780	295.060	1568.37	-106.46	49.61	-105.13	3223687.40	1451753.07	40.5706736	-104.6948053	0.16	
1664.00	6.180	292.930	1656.80	-115.74	53.70	-114.30	3223678.19	1451757.08	40.5706848	-104.6948383	0.73	
1753.00	6.480	294.360	1745.26	-124.84	57.64	-123.29	3223669.17	1451760.93	40.5706956	-104.6948707	0.38	
1843.00	6.250	292.840	1834.71	-134.08	61.64	-132.43	3223659.99	1451764.85	40.5707066	-104.6949036	0.32	LAST BH SURFACE MWD SURVEY
1985.00	7.220	294.020	1975.72	-149.54	68.27	-147.71	3223644.66	1451771.34	40.5707248	-104.6949586	0.69	FIRST BH MWD SURVEY
2063.00	7.300	294.190	2053.10	-158.64	72.29	-156.70	3223635.62	1451775.28	40.5707358	-104.6949909	0.11	
2152.00	7.270	293.950	2141.38	-169.07	76.90	-167.01	3223625.28	1451779.79	40.5707485	-104.6950280	0.05	
2242.00	7.340	294.310	2230.65	-179.64	81.58	-177.45	3223614.79	1451784.38	40.5707613	-104.6950656	0.09	
2331.00	7.360	294.380	2318.92	-190.14	86.27	-187.83	3223604.38	1451788.98	40.5707742	-104.6951030	0.02	
2421.00	7.400	293.800	2408.17	-200.82	90.99	-198.38	3223593.78	1451793.60	40.5707871	-104.6951409	0.09	
2511.00	7.330	294.310	2497.43	-211.48	95.69	-208.91	3223583.21	1451798.20	40.5708000	-104.6951789	0.11	
2600.00	7.360	294.140	2585.70	-221.98	100.36	-219.29	3223572.79	1451802.78	40.5708128	-104.6952162	0.04	

### REFERENCE WELLPATH IDENTIFICATION

Operator	BAYSWATER E&P, LLC	Well	DEHAAN 7X-HNC-16-07-65
Field	WELD COUNTY (NAD83/TRUE NORTH)	API	0512349457
Facility	SEC.17-T07N-R65W	Wellbore	DEHAAN 7X-HNC-16-07-65 AWB
Slot	SLOT#07 DEHAAN 7X-HNC-16-07-65 (1020'FSL & 573'FWL,SEC.17)		

### WELLPATH DATA (197 stations)

MD [ft]	Inclination [°]	Azimuth [°]	TVD [ft]	Vert Sect [ft]	North [ft]	East [ft]	Grid East [US ft]	Grid North [US ft]	Latitude	Longitude	DLS [°/100ft]	Comments
2690.00	7.390	294.240	2674.96	-232.64	105.09	-229.83	3223562.21	1451807.42	40.5708258	-104.6952542	0.04	
2779.00	7.370	293.890	2763.22	-243.21	109.75	-240.27	3223551.73	1451811.98	40.5708386	-104.6952917	0.06	
2869.00	7.400	293.860	2852.47	-253.91	114.44	-250.85	3223541.11	1451816.57	40.5708515	-104.6953298	0.03	
2958.00	7.510	293.580	2940.72	-264.61	119.08	-261.42	3223530.49	1451821.12	40.5708642	-104.6953679	0.13	
3047.00	7.520	294.540	3028.96	-275.36	123.83	-272.05	3223519.82	1451825.77	40.5708773	-104.6954061	0.14	
3137.00	7.450	293.940	3118.19	-286.18	128.64	-282.74	3223509.09	1451830.48	40.5708905	-104.6954446	0.12	
3227.00	7.490	294.290	3207.42	-296.99	133.42	-293.42	3223498.37	1451835.16	40.5709036	-104.6954830	0.07	
3316.00	7.410	293.970	3295.67	-307.65	138.14	-303.95	3223487.79	1451839.79	40.5709165	-104.6955209	0.10	
3405.00	7.490	293.730	3383.92	-318.33	142.80	-314.50	3223477.20	1451844.36	40.5709294	-104.6955589	0.10	
3495.00	7.470	294.510	3473.16	-329.15	147.59	-325.19	3223466.46	1451849.05	40.5709425	-104.6955974	0.11	
3584.00	7.190	294.340	3561.43	-339.61	152.29	-335.53	3223456.08	1451853.65	40.5709554	-104.6956346	0.32	
3674.00	7.350	293.890	3650.71	-350.13	156.94	-345.93	3223445.65	1451858.21	40.5709682	-104.6956721	0.19	
3764.00	7.320	293.750	3739.97	-360.77	161.58	-356.44	3223435.09	1451862.75	40.5709809	-104.6957099	0.04	
3854.00	6.670	292.000	3829.30	-370.98	165.85	-366.53	3223424.96	1451866.93	40.5709926	-104.6957462	0.76	
3943.00	6.160	291.590	3917.74	-380.31	169.54	-375.77	3223415.70	1451870.53	40.5710027	-104.6957795	0.58	
4033.00	7.540	293.250	4007.10	-390.33	173.65	-385.68	3223405.74	1451874.55	40.5710140	-104.6958151	1.55	
4123.00	7.580	295.590	4096.31	-401.24	178.54	-396.46	3223394.92	1451879.35	40.5710274	-104.6958539	0.34	
4212.00	7.690	294.630	4184.53	-412.08	183.56	-407.17	3223384.17	1451884.27	40.5710412	-104.6958925	0.19	
4301.00	7.350	294.150	4272.76	-422.82	188.37	-417.78	3223373.52	1451888.98	40.5710544	-104.6959307	0.39	
4390.00	7.470	294.520	4361.02	-433.40	193.10	-428.23	3223363.02	1451893.62	40.5710674	-104.6959683	0.15	
4478.00	7.620	293.430	4448.25	-444.09	197.80	-438.79	3223352.42	1451898.21	40.5710803	-104.6960063	0.24	
4567.00	7.400	294.540	4536.49	-454.84	202.52	-449.42	3223341.75	1451902.84	40.5710933	-104.6960446	0.30	
4656.00	7.140	292.310	4624.78	-465.29	207.00	-459.75	3223331.38	1451907.23	40.5711056	-104.6960818	0.43	
4746.00	6.620	293.620	4714.13	-475.33	211.20	-469.68	3223321.41	1451911.34	40.5711171	-104.6961175	0.60	
4835.00	7.470	295.010	4802.45	-485.40	215.71	-479.62	3223311.43	1451915.75	40.5711294	-104.6961533	0.97	
4925.00	7.370	294.210	4891.70	-496.09	220.55	-490.19	3223300.82	1451920.50	40.5711427	-104.6961913	0.16	
5015.00	7.560	294.720	4980.94	-506.87	225.39	-500.83	3223290.13	1451925.24	40.5711560	-104.6962296	0.22	
5104.00	7.460	294.520	5069.17	-517.57	230.24	-511.41	3223279.51	1451929.99	40.5711693	-104.6962677	0.12	
5194.00	7.370	294.400	5158.42	-528.27	235.04	-521.98	3223268.90	1451934.71	40.5711825	-104.6963058	0.10	
5283.00	7.610	294.990	5246.66	-538.94	239.89	-532.52	3223258.32	1451939.46	40.5711958	-104.6963437	0.28	

### REFERENCE WELLPATH IDENTIFICATION

Operator	BAYSWATER E&P, LLC	Well	DEHAAN 7X-HNC-16-07-65
Field	WELD COUNTY (NAD83/TRUE NORTH)	API	0512349457
Facility	SEC.17-T07N-R65W	Wellbore	DEHAAN 7X-HNC-16-07-65 AWB
Slot	SLOT#07 DEHAAN 7X-HNC-16-07-65 (1020'FSL & 573'FWL,SEC.17)		

### WELLPATH DATA (197 stations) † = interpolated, ‡ = extrapolated station

MD [ft]	Inclination [°]	Azimuth [°]	TVD [ft]	Vert Sect [ft]	North [ft]	East [ft]	Grid East [US ft]	Grid North [US ft]	Latitude	Longitude	DLS ["/100ft]	Comments
5372.00	6.880	294.180	5334.95	-549.27	244.57	-542.72	3223248.07	1451944.04	40.5712087	-104.6963804	0.83	
5462.00	6.510	294.920	5424.34	-558.93	248.92	-552.27	3223238.49	1451948.31	40.5712206	-104.6964148	0.42	
5552.00	7.420	295.080	5513.67	-568.95	253.54	-562.16	3223228.55	1451952.83	40.5712333	-104.6964504	1.01	
5641.00	7.370	294.910	5601.93	-579.46	258.38	-572.54	3223218.13	1451957.58	40.5712466	-104.6964878	0.06	
5730.00	7.370	294.960	5690.20	-589.94	263.19	-582.89	3223207.73	1451962.30	40.5712598	-104.6965250	0.01	
5820.00	6.520	296.500	5779.54	-599.87	267.91	-592.70	3223197.88	1451966.92	40.5712727	-104.6965603	0.97	
5909.00	6.210	295.790	5867.99	-608.85	272.25	-601.56	3223188.99	1451971.19	40.5712847	-104.6965922	0.36	
5999.00	6.880	294.950	5957.40	-618.23	276.65	-610.83	3223179.68	1451975.50	40.5712967	-104.6966256	0.75	
6089.00	7.420	294.720	6046.70	-628.53	281.35	-620.99	3223169.47	1451980.11	40.5713096	-104.6966622	0.60	
6178.00	7.320	294.560	6134.96	-639.03	286.11	-631.37	3223159.05	1451984.77	40.5713227	-104.6966995	0.11	
6267.00	6.420	295.040	6223.32	-648.82	290.57	-641.03	3223149.35	1451989.15	40.5713349	-104.6967343	1.01	
6356.00	6.940	295.160	6311.72	-658.31	294.97	-650.41	3223139.93	1451993.46	40.5713470	-104.6967680	0.58	
6446.00	7.240	294.700	6401.03	-668.51	299.65	-660.48	3223129.82	1451998.04	40.5713598	-104.6968043	0.34	
6535.00	7.340	294.590	6489.31	-678.90	304.36	-670.75	3223119.51	1452002.66	40.5713728	-104.6968413	0.11	
6625.00	7.320	295.180	6578.58	-689.45	309.19	-681.16	3223109.05	1452007.40	40.5713860	-104.6968788	0.09	
6714.00	5.510	309.200	6667.02	-698.03	314.30	-689.61	3223100.56	1452012.43	40.5714001	-104.6969091	2.68	
6803.00	5.590	44.410	6755.76	-698.47	320.11	-689.89	3223100.23	1452018.24	40.5714160	-104.6969101	9.20	
6892.00	14.040	87.130	6843.47	-684.72	323.76	-676.03	3223114.05	1452022.01	40.5714260	-104.6968603	11.93	
6981.00	23.410	90.360	6927.66	-656.21	324.19	-647.50	3223142.57	1452022.70	40.5714272	-104.6967576	10.59	
7070.00	32.280	92.240	7006.28	-614.69	323.14	-605.99	3223184.09	1452022.04	40.5714243	-104.6966082	10.01	
7160.00	41.200	89.650	7078.33	-560.92	322.38	-552.23	3223237.86	1452021.76	40.5714223	-104.6964146	10.06	
7249.00	48.560	92.010	7141.36	-498.18	321.39	-489.49	3223300.60	1452021.34	40.5714195	-104.6961888	8.48	
7338.00	57.520	93.100	7194.82	-427.15	318.19	-418.52	3223371.60	1452018.78	40.5714107	-104.6959333	10.11	
7427.00	67.010	89.090	7236.20	-348.49	316.80	-339.87	3223450.25	1452018.11	40.5714069	-104.6956502	11.38	
7517.00	76.170	88.480	7264.60	-263.29	318.62	-254.58	3223535.51	1452020.71	40.5714119	-104.6953433	10.20	
7606.00	84.730	88.060	7279.35	-175.75	321.27	-166.94	3223623.13	1452024.15	40.5714192	-104.6950278	9.63	
7662.00†	87.989	89.257	7282.90	-119.95	322.58	-111.08	3223678.98	1452025.97	40.5714228	-104.6948267	6.20	CROSS SETBACK HEEL (1339'FSL & 460'FWL,SEC.17)
7695.00	89.910	89.960	7283.51	-86.97	322.81	-78.08	3223711.96	1452026.49	40.5714234	-104.6947080	6.20	
7784.00	89.880	90.940	7283.67	2.01	322.11	10.91	3223800.96	1452026.60	40.5714215	-104.6943876	1.10	
7874.00	90.000	90.980	7283.77	92.00	320.60	100.90	3223890.95	1452025.91	40.5714174	-104.6940637	0.14	

### REFERENCE WELLPATH IDENTIFICATION

Operator	BAYSWATER E&P, LLC	Well	DEHAAN 7X-HNC-16-07-65
Field	WELD COUNTY (NAD83/TRUE NORTH)	API	0512349457
Facility	SEC.17-T07N-R65W	Wellbore	DEHAAN 7X-HNC-16-07-65 AWB
Slot	SLOT#07 DEHAAN 7X-HNC-16-07-65 (1020'FSL & 573'FWL,SEC.17)		

### WELLPATH DATA (197 stations)

MD [ft]	Inclination [°]	Azimuth [°]	TVD [ft]	Vert Sect [ft]	North [ft]	East [ft]	Grid East [US ft]	Grid North [US ft]	Latitude	Longitude	DLS [°/100ft]	Comments
7963.00	90.000	90.910	7283.77	181.00	319.13	189.89	3223979.95	1452025.25	40.5714133	-104.6937434	0.08	
8053.00	89.910	90.730	7283.84	270.99	317.84	279.88	3224069.95	1452024.78	40.5714098	-104.6934195	0.22	
8143.00	89.970	90.880	7283.93	360.98	316.58	369.87	3224159.94	1452024.34	40.5714063	-104.6930955	0.18	
8232.00	89.910	90.870	7284.02	449.98	315.22	458.86	3224248.94	1452023.79	40.5714026	-104.6927752	0.07	
8321.00	89.970	90.810	7284.12	538.97	313.92	547.85	3224337.93	1452023.29	40.5713990	-104.6924549	0.10	
8411.00	89.940	91.200	7284.19	628.96	312.34	637.83	3224427.93	1452022.53	40.5713947	-104.6921310	0.43	
8501.00	90.000	91.470	7284.24	718.96	310.24	727.81	3224517.92	1452021.25	40.5713889	-104.6918071	0.31	
8591.00	89.910	90.970	7284.31	808.96	308.32	817.79	3224607.91	1452020.15	40.5713836	-104.6914832	0.56	
8680.00	89.910	90.890	7284.45	897.95	306.88	906.78	3224696.90	1452019.51	40.5713797	-104.6911629	0.09	
8769.00	89.820	90.360	7284.66	986.94	305.91	995.77	3224785.90	1452019.35	40.5713770	-104.6908426	0.60	
8858.00	90.030	90.740	7284.77	1075.93	305.05	1084.77	3224874.89	1452019.31	40.5713746	-104.6905222	0.49	
8947.00	90.030	93.600	7284.73	1164.91	301.68	1173.69	3224963.85	1452016.74	40.5713654	-104.6902021	3.21	
9037.00	89.910	91.520	7284.77	1254.89	297.66	1263.60	3225053.78	1452013.54	40.5713543	-104.6898785	2.31	
9126.00	89.940	90.640	7284.89	1343.89	295.99	1352.58	3225142.77	1452012.67	40.5713497	-104.6895582	0.99	
9216.00	89.970	94.150	7284.96	1433.87	292.23	1442.49	3225232.71	1452009.73	40.5713394	-104.6892346	3.90	
9305.00	91.110	96.090	7284.12	1522.69	284.29	1531.13	3225321.41	1452002.59	40.5713176	-104.6889156	2.53	
9394.00	89.820	92.320	7283.40	1611.57	277.76	1619.86	3225410.20	1451996.88	40.5712996	-104.6885961	4.48	
9484.00	89.880	89.810	7283.63	1701.56	276.09	1709.84	3225500.19	1451996.02	40.5712950	-104.6882723	2.79	
9573.00	90.030	90.740	7283.70	1790.54	275.66	1798.84	3225589.18	1451996.40	40.5712938	-104.6879519	1.06	
9662.00	90.000	90.740	7283.68	1879.53	274.51	1887.83	3225678.18	1451996.06	40.5712907	-104.6876316	0.03	
9752.00	90.000	90.900	7283.68	1969.52	273.22	1977.82	3225768.18	1451995.59	40.5712871	-104.6873077	0.18	
9842.00	89.850	90.780	7283.80	2059.51	271.90	2067.81	3225858.17	1451995.09	40.5712835	-104.6869838	0.21	
9931.00	89.880	91.040	7284.01	2148.51	270.49	2156.80	3225947.17	1451994.48	40.5712796	-104.6866634	0.29	
10020.00	90.280	90.900	7283.88	2237.50	268.98	2245.79	3226036.16	1451993.79	40.5712754	-104.6863431	0.48	
10109.00	90.310	90.820	7283.43	2326.49	267.65	2334.78	3226125.16	1451993.26	40.5712717	-104.6860228	0.10	
10199.00	90.370	91.900	7282.89	2416.49	265.51	2424.75	3226215.14	1451991.94	40.5712658	-104.6856990	1.20	
10288.00	90.370	91.740	7282.32	2505.49	262.69	2513.70	3226304.11	1451989.92	40.5712581	-104.6853788	0.18	
10378.00	90.220	91.870	7281.85	2595.48	259.85	2603.66	3226394.09	1451987.90	40.5712503	-104.6850550	0.22	
10467.00	90.430	91.680	7281.35	2684.48	257.09	2692.61	3226483.06	1451985.96	40.5712427	-104.6847348	0.32	
10557.00	91.880	91.910	7279.54	2774.46	254.28	2782.55	3226573.02	1451983.95	40.5712349	-104.6844111	1.63	

### REFERENCE WELLPATH IDENTIFICATION

Operator	BAYSWATER E&P, LLC	Well	DEHAAN 7X-HNC-16-07-65
Field	WELD COUNTY (NAD83/TRUE NORTH)	API	0512349457
Facility	SEC.17-T07N-R65W	Wellbore	DEHAAN 7X-HNC-16-07-65 AWB
Slot	SLOT#07 DEHAAN 7X-HNC-16-07-65 (1020'FSL & 573'FWL,SEC.17)		

### WELLPATH DATA (197 stations)

MD [ft]	Inclination [°]	Azimuth [°]	TVD [ft]	Vert Sect [ft]	North [ft]	East [ft]	Grid East [US ft]	Grid North [US ft]	Latitude	Longitude	DLS [°/100ft]	Comments
10646.00	90.340	91.980	7277.81	2863.44	251.26	2871.48	3226661.97	1451981.74	40.5712266	-104.6840910	1.73	
10735.00	90.520	92.030	7277.14	2952.43	248.14	2960.42	3226750.93	1451979.44	40.5712180	-104.6837708	0.21	
10825.00	90.430	91.930	7276.40	3042.43	245.03	3050.36	3226840.90	1451977.14	40.5712094	-104.6834471	0.15	
10914.00	90.310	91.900	7275.82	3131.43	242.06	3139.31	3226929.86	1451974.98	40.5712012	-104.6831269	0.14	
11003.00	90.340	91.810	7275.32	3220.42	239.18	3228.26	3227018.84	1451972.91	40.5711933	-104.6828067	0.11	
11092.00	90.310	91.640	7274.81	3309.42	236.50	3317.22	3227107.81	1451971.04	40.5711859	-104.6824865	0.19	
11182.00	90.280	91.800	7274.35	3399.42	233.80	3407.18	3227197.79	1451969.15	40.5711785	-104.6821627	0.18	
11271.00	90.280	91.800	7273.91	3488.42	231.00	3496.13	3227286.76	1451967.16	40.5711708	-104.6818425	0.00	
11360.00	90.340	91.800	7273.43	3577.42	228.21	3585.09	3227375.74	1451965.18	40.5711631	-104.6815223	0.07	
11450.00	90.370	91.730	7272.88	3667.41	225.43	3675.04	3227465.71	1451963.22	40.5711554	-104.6811985	0.08	
11539.00	90.280	91.870	7272.37	3756.41	222.64	3764.00	3227554.69	1451961.24	40.5711477	-104.6808783	0.19	
11629.00	90.370	91.800	7271.86	3846.41	219.76	3853.95	3227644.66	1451959.17	40.5711398	-104.6805545	0.13	
11717.00	90.220	91.770	7271.41	3934.41	217.02	3941.91	3227732.63	1451957.23	40.5711322	-104.6802379	0.17	
11807.00	90.180	91.850	7271.09	4024.41	214.17	4031.86	3227822.61	1451955.20	40.5711243	-104.6799142	0.10	
11896.00	90.250	92.020	7270.76	4113.40	211.17	4120.81	3227911.58	1451953.01	40.5711161	-104.6795940	0.21	
11986.00	90.340	91.870	7270.30	4203.40	208.11	4210.76	3228001.54	1451950.77	40.5711076	-104.6792702	0.19	
12075.00	90.280	91.440	7269.81	4292.40	205.54	4299.72	3228090.52	1451949.01	40.5711005	-104.6789500	0.49	
12164.00	90.400	91.650	7269.29	4381.40	203.14	4388.69	3228179.50	1451947.42	40.5710939	-104.6786298	0.27	
12253.00	90.280	91.870	7268.76	4470.40	200.41	4477.64	3228268.48	1451945.49	40.5710864	-104.6783096	0.28	
12343.00	90.990	91.810	7267.76	4560.39	197.52	4567.59	3228358.45	1451943.42	40.5710784	-104.6779858	0.79	
12433.00	91.110	91.860	7266.11	4650.37	194.64	4657.53	3228448.40	1451941.35	40.5710704	-104.6776621	0.14	
12521.00	91.320	92.240	7264.24	4738.35	191.49	4745.45	3228536.35	1451939.01	40.5710617	-104.6773456	0.49	
12611.00	91.110	92.020	7262.34	4828.33	188.15	4835.37	3228626.29	1451936.48	40.5710525	-104.6770219	0.34	
12700.00	91.350	92.910	7260.43	4917.29	184.32	4924.27	3228715.22	1451933.46	40.5710420	-104.6767020	1.04	
12790.00	91.350	92.170	7258.31	5007.26	180.33	5014.15	3228805.13	1451930.29	40.5710310	-104.6763784	0.82	
12880.00	91.080	91.780	7256.40	5097.23	177.23	5104.08	3228895.08	1451928.01	40.5710224	-104.6760547	0.53	
12969.00	91.050	91.920	7254.74	5186.22	174.36	5193.02	3228984.04	1451925.94	40.5710145	-104.6757346	0.16	
13059.00	90.980	92.730	7253.15	5276.19	170.71	5282.93	3229073.98	1451923.11	40.5710044	-104.6754110	0.90	
13149.00	91.140	91.700	7251.48	5366.17	167.23	5372.84	3229163.92	1451920.45	40.5709948	-104.6750873	1.16	
13238.00	91.200	90.810	7249.67	5455.15	165.28	5461.80	3229252.89	1451919.31	40.5709894	-104.6747671	1.00	

### REFERENCE WELLPATH IDENTIFICATION

Operator	BAYSWATER E&P, LLC	Well	DEHAAN 7X-HNC-16-07-65
Field	WELD COUNTY (NAD83/TRUE NORTH)	API	0512349457
Facility	SEC.17-T07N-R65W	Wellbore	DEHAAN 7X-HNC-16-07-65 AWB
Slot	SLOT#07 DEHAAN 7X-HNC-16-07-65 (1020'FSL & 573'FWL,SEC.17)		

### WELLPATH DATA (197 stations)

MD [ft]	Inclination [°]	Azimuth [°]	TVD [ft]	Vert Sect [ft]	North [ft]	East [ft]	Grid East [US ft]	Grid North [US ft]	Latitude	Longitude	DLS [°/100ft]	Comments
13328.00	90.030	93.430	7248.70	5545.13	161.95	5551.73	3229342.84	1451916.79	40.5709802	-104.6744434	3.19	
13418.00	90.090	90.910	7248.61	5635.12	158.55	5641.65	3229432.79	1451914.20	40.5709708	-104.6741197	2.80	
13507.00	90.250	92.020	7248.34	5724.12	156.27	5730.62	3229521.77	1451912.74	40.5709645	-104.6737995	1.26	
13597.00	90.520	91.940	7247.74	5814.11	153.16	5820.57	3229611.74	1451910.44	40.5709559	-104.6734757	0.31	
13686.00	89.970	91.310	7247.36	5903.11	150.64	5909.53	3229700.72	1451908.73	40.5709489	-104.6731555	0.94	
13775.00	90.000	89.100	7247.38	5992.08	150.32	5998.52	3229789.71	1451909.22	40.5709480	-104.6728352	2.48	
13864.00	90.030	91.560	7247.36	6081.05	149.81	6087.52	3229878.70	1451909.52	40.5709465	-104.6725149	2.76	
13954.00	90.030	88.040	7247.31	6171.00	150.12	6177.50	3229968.67	1451910.65	40.5709473	-104.6721910	3.91	
14044.00	90.060	90.520	7247.24	6260.92	151.25	6267.49	3230058.64	1451912.60	40.5709504	-104.6718671	2.76	
14133.00	90.400	92.640	7246.88	6349.91	148.80	6356.45	3230147.62	1451910.95	40.5709436	-104.6715468	2.41	
14223.00	90.430	92.580	7246.23	6439.89	144.70	6446.35	3230237.55	1451907.67	40.5709322	-104.6712232	0.07	
14312.00	90.060	93.120	7245.85	6528.87	140.27	6535.24	3230326.48	1451904.05	40.5709200	-104.6709033	0.74	
14402.00	90.000	92.780	7245.80	6618.84	135.64	6625.12	3230416.39	1451900.24	40.5709073	-104.6705798	0.38	
14491.00	90.030	90.920	7245.78	6707.84	132.77	6714.07	3230505.36	1451898.17	40.5708993	-104.6702596	2.09	
14580.00	90.120	91.430	7245.66	6796.84	130.94	6803.05	3230594.35	1451897.15	40.5708942	-104.6699393	0.58	
14669.00	90.220	90.960	7245.40	6885.83	129.09	6892.03	3230683.34	1451896.11	40.5708891	-104.6696190	0.54	
14758.00	90.000	90.910	7245.23	6974.83	127.64	6981.02	3230772.34	1451895.46	40.5708850	-104.6692987	0.25	
14846.00	90.180	90.880	7245.09	7062.82	126.26	7069.01	3230860.33	1451894.89	40.5708812	-104.6689820	0.21	
14936.00	90.120	91.020	7244.85	7152.82	124.77	7159.00	3230950.33	1451894.21	40.5708770	-104.6686581	0.17	
15025.00	90.060	90.680	7244.71	7241.81	123.45	7247.99	3231039.33	1451893.70	40.5708733	-104.6683378	0.39	
15114.00	90.060	90.840	7244.62	7330.80	122.27	7336.98	3231128.32	1451893.33	40.5708700	-104.6680175	0.18	
15203.00	90.120	90.850	7244.48	7419.79	120.96	7425.97	3231217.32	1451892.83	40.5708663	-104.6676971	0.07	
15292.00	90.090	91.010	7244.32	7508.79	119.51	7514.96	3231306.31	1451892.19	40.5708623	-104.6673768	0.18	
15382.00	90.030	91.140	7244.22	7598.78	117.82	7604.94	3231396.31	1451891.32	40.5708576	-104.6670529	0.16	
15472.00	90.090	90.920	7244.13	7688.78	116.21	7694.93	3231486.30	1451890.52	40.5708531	-104.6667290	0.25	
15561.00	90.150	90.850	7243.94	7777.77	114.83	7783.91	3231575.29	1451889.95	40.5708492	-104.6664087	0.10	
15650.00	90.180	91.180	7243.69	7866.77	113.25	7872.90	3231664.29	1451889.18	40.5708448	-104.6660884	0.37	
15740.00	90.180	91.090	7243.40	7956.76	111.47	7962.88	3231754.28	1451888.22	40.5708398	-104.6657645	0.10	
15830.00	90.000	90.880	7243.26	8046.76	109.92	8052.87	3231844.27	1451887.49	40.5708355	-104.6654406	0.31	
15919.00	90.060	91.870	7243.22	8135.76	107.79	8141.84	3231933.26	1451886.16	40.5708296	-104.6651204	1.11	



REFERENCE WELLPATH IDENTIFICATION			
Operator	BAYSWATER E&P, LLC	Well	DEHAAN 7X-HNC-16-07-65
Field	WELD COUNTY (NAD83/TRUE NORTH)	API	0512349457
Facility	SEC.17-T07N-R65W	Wellbore	DEHAAN 7X-HNC-16-07-65 AWP
Slot	SLOT#07 DEHAAN 7X-HNC-16-07-65 (1020'FSL & 573'FWL,SEC.17)		

WELLPATH DATA (197 stations) † = interpolated, ‡ = extrapolated station												
MD [ft]	Inclination [°]	Azimuth [°]	TVD [ft]	Vert Sect [ft]	North [ft]	East [ft]	Grid East [US ft]	Grid North [US ft]	Latitude	Longitude	DLS [°/100ft]	Comments
16008.00	91.080	92.080	7242.33	8224.75	104.72	8230.78	3232022.22	1451883.90	40.5708211	-104.6648002	1.17	
16097.00	91.020	91.820	7240.70	8313.73	101.69	8319.72	3232111.18	1451881.68	40.5708127	-104.6644801	0.30	
16186.00	90.980	91.740	7239.15	8402.72	98.93	8408.66	3232200.14	1451879.73	40.5708050	-104.6641600	0.10	
16275.00	90.980	91.890	7237.62	8491.70	96.11	8497.60	3232289.10	1451877.72	40.5707972	-104.6638398	0.17	
16364.00	90.950	91.810	7236.12	8580.69	93.24	8586.54	3232378.06	1451875.65	40.5707892	-104.6635197	0.10	
16454.00	90.770	92.010	7234.77	8670.68	90.24	8676.48	3232468.02	1451873.47	40.5707809	-104.6631960	0.30	
16543.00	90.710	91.980	7233.62	8759.67	87.14	8765.42	3232556.98	1451871.18	40.5707723	-104.6628758	0.08	
16632.00	90.710	91.920	7232.52	8848.66	84.11	8854.36	3232645.95	1451868.96	40.5707639	-104.6625557	0.07	
16722.00	90.620	91.970	7231.48	8938.65	81.06	8944.31	3232735.91	1451866.72	40.5707554	-104.6622319	0.11	
16811.00	91.050	92.580	7230.18	9027.64	77.53	9033.23	3232824.86	1451864.00	40.5707456	-104.6619119	0.84	
16901.00	90.710	91.840	7228.80	9117.62	74.06	9123.15	3232914.80	1451861.35	40.5707360	-104.6615882	0.90	
16990.00	91.050	93.640	7227.43	9206.59	69.80	9212.03	3233003.72	1451857.90	40.5707243	-104.6612683	2.06	
17079.00	90.740	92.500	7226.04	9295.54	65.04	9300.89	3233092.62	1451853.94	40.5707111	-104.6609484	1.33	
17169.00	90.650	91.890	7224.95	9385.53	61.59	9390.82	3233182.57	1451851.31	40.5707015	-104.6606247	0.69	
17228.00†	90.690	92.016	7224.26	9444.53	59.58	9449.78	3233241.54	1451849.84	40.5706959	-104.6604125	0.22	CROSS SETBACK TOE (1351'FSL & 460'FEL,SEC.16)
17258.00	90.710	92.080	7223.89	9474.52	58.51	9479.76	3233271.53	1451849.04	40.5706930	-104.6603046	0.22	LAST BH MWD SURVEY
17283.00‡	90.710	92.080	7223.58	9499.52	57.60	9504.74	3233296.52	1451848.36	40.5706905	-104.6602147	0.00	PROJECTION TO BIT (1349'FSL & 405'FEL,SEC.16)

### REFERENCE WELLPATH IDENTIFICATION

Operator	BAYSWATER E&P, LLC	Well	DEHAAN 7X-HNC-16-07-65
Field	WELD COUNTY (NAD83/TRUE NORTH)	API	0512349457
Facility	SEC.17-T07N-R65W	Wellbore	DEHAAN 7X-HNC-16-07-65 AWB
Slot	SLOT#07 DEHAAN 7X-HNC-16-07-65 (1020'FSL & 573'FWL,SEC.17)		

### TARGETS

Name	TVD [ft]	North [ft]	East [ft]	Grid East [US ft]	Grid North [US ft]	Latitude	Longitude	Shape
SEC.16-T07N-R65W	0.00	120.09	-35.04	3223756.85	1451824.18	40.5708670	-104.6945530	polygon
	2D Polygon: dimensions not calculated							
SEC.16/17-T07N-R65W (SB 460')	0.00	120.09	-35.04	3223756.85	1451824.18	40.5708670	-104.6945530	polygon
	2D Polygon: dimensions not calculated							
SEC.17-T07N-R65W	0.00	120.09	-35.04	3223756.85	1451824.18	40.5708670	-104.6945530	polygon
	2D Polygon: dimensions not calculated							
DEHAAN 7X-HNC-16-07-65 BHL REV-1 (1356'FSL & 460'FEL,SEC.16)	7224.00	65.06	9449.92	3233241.64	1451855.32	40.5707110	-104.6604120	point
DEHAAN 7X-HNC-16-07-65 LP REV-1 (1345'FSL & 460'FWL,SEC.17)	7284.00	329.21	-111.16	3223678.83	1452032.59	40.5714410	-104.6948270	point

### WELLPATH COMPOSITION - Ref Wellbore: DEHAAN 7X-HNC-16-07-65 AWB Ref Wellpath: DEHAAN 7X-HNC-16-07-65 AWP

Start MD [ft]	End MD [ft]	Positional Uncertainty Model	Log Name/Comment	Wellbore	Survey Date
23.00	1843.00	OWSG MWD rev2 + IFR1 + Multi-Station Correction	OWSG MWD rev2 + IFR1 + MS 13-1/2" <140 - 1843>	DEHAAN 7X-HNC-16-07-65 AWB	1/3/2023
1843.00	17283.00	OWSG MWD rev2 + IFR1 + Multi-Station Correction	OWSG MWD rev2 + IFR1 + MS 8-1/2" <1985 - 17258>	DEHAAN 7X-HNC-16-07-65 AWB	1/6/2023

REFERENCE WELLPATH IDENTIFICATION			
Operator	BAYSWATER E&P, LLC	Well	DEHAAN 7X-HNC-16-07-65
Field	WELD COUNTY (NAD83/TRUE NORTH)	API	0512349457
Facility	SEC.17-T07N-R65W	Wellbore	DEHAAN 7X-HNC-16-07-65 AWB
Slot	SLOT#07 DEHAAN 7X-HNC-16-07-65 (1020'FSL & 573'FWL,SEC.17)		

WELLPATH COMMENTS				
MD [ft]	Inclination [°]	Azimuth [°]	TVD [ft]	Comment
140.00	0.250	330.180	140.00	FIRST BH SURFACE MWD SURVEY
1843.00	6.250	292.840	1834.71	LAST BH SURFACE MWD SURVEY
1985.00	7.220	294.020	1975.72	FIRST BH MWD SURVEY
7662.00	87.989	89.257	7282.90	CROSS SETBACK HEEL (1339'FSL & 460'FWL,SEC.17)
17228.00	90.690	92.016	7224.26	CROSS SETBACK TOE (1351'FSL & 460'FEL,SEC.16)
17258.00	90.710	92.080	7223.89	LAST BH MWD SURVEY
17283.00	90.710	92.080	7223.58	PROJECTION TO BIT (1349'FSL & 405'FEL,SEC.16)