

TABLE 1
FIELD DATA SUMMARY TABLE
NOBLE 100322
WELLS RANCH AE20, WELD COUNTY, COLORADO
REM # 26241

Sample ID	Sample Date	Depth (ft)	Benzene (mg/kg)	Toluene (mg/kg)	Ethyl-Benzene (mg/kg)	Xylenes (mg/kg)	1,2,4-Trimethyl-Benzene (mg/kg)	1,3,5-Trimethyl-Benzene (mg/kg)	Naphthalene (mg/kg)	TPH (mg/kg)	TPH GRO (mg/kg)	TPH DRO (mg/kg)	TPH ORO (mg/kg)
ECMC Table 915-1 Limits (Residential SSL)			1.2	490	5.8	58	30	27	2	500	500**		
ECMC Table 915-1 Limits (Protection of Groundwater SSL)			0.0026	0.69	0.78	9.9	0.0081	0.0087	0.0038	500	500**		
TP-N 3 Ft	4/7/2022	3	<0.002	<0.002	<0.002	<0.002	<0.002	<0.002	<0.00067	<500	<0.200	<25.0	<100
TP-S 5 Ft	4/7/2022	5	<0.002	<0.002	<0.002	<0.002	<0.002	<0.002	<0.00067	<500	<0.200	<25.0	<100
TP-Mid 4 Ft	4/7/2022	4	<0.002	<0.002	<0.002	<0.002	<0.002	<0.002	<0.00067	<500	<0.200	<25.0	<100
TP-E 2 Ft	4/7/2022	2	<0.002	<0.002	<0.002	<0.002	<0.002	<0.002	<0.00067	<500	<0.200	<25.0	<100
BKG-1 1 Ft	4/7/2022	1	<0.002	<0.002	<0.002	<0.002	<0.002	<0.002	<0.00067	<500	<0.200	<25.0	<100
N. Ex. N Wall 3 Ft	4/13/2022	3	<0.002	<0.005	<0.005	<0.010	<0.005	<0.005	<0.0038	<500	0.66	430	<50
N. Ex. E Wall 2 Ft	4/13/2022	2	<0.002	0.0068	<0.005	0.021	0.021	<0.005	0.012	<500	1.6	74	<50
N. Ex. Mid 2 Ft	4/13/2022	2	<0.002	<0.005	<0.005	<0.010	<0.005	<0.005	<0.0038	<500	0.92	<50	<50
N. Ex. W Wall 3 Ft	4/13/2022	3	<0.002	<0.005	<0.005	<0.010	<0.005	<0.005	<0.0038	<500	<0.50	<50	<50
E Pit N Wall 5 Ft	4/13/2022	5	0.016	0.3	0.27	1.3	0.57	0.14	0.19	2279	29	2100	150
E Pit S Wall 5 Ft	4/13/2022	5	0.0097	0.0073	<0.005	<0.010	<0.005	<0.005	<0.0038	<500	3.8	<50	<50
E Pit E Wall 5 Ft	4/13/2022	5	0.0078	0.019	0.0084	0.036	0.021	0.0053	0.0065	<500	2.3	<50	<50
E Pit W Wall 5 Ft	4/13/2022	5	0.023	0.083	0.021	0.082	0.031	0.0075	0.0066	<500	2.4	<50	<50
E Pit Floor 7 Ft	4/13/2022	7	<0.002	0.019	0.0077	0.029	0.012	<0.005	<0.0038	<500	1.4	<50	<50
W Pit N Wall 5 Ft	4/13/2022	5	0.085	0.087	0.014	0.06	0.017	<0.005	0.0045	<500	1.6	<50	<50
W Pit S Wall 5 Ft	4/13/2022	5	0.55	0.34	0.023	0.087	0.011	<0.005	0.0059	<500	2.2	<50	<50
W Pit E Wall 5 Ft	4/13/2022	5	0.24	0.22	0.024	0.093	0.021	0.005	0.0062	<500	2.3	<50	<50
W Pit W Wall 5 Ft	4/13/2022	5	1.6	7	2.2	8.3	3.3	0.81	0.78	<500	320	<50	<50
W Pit Floor 7 Ft	4/13/2022	7	0.0066	<0.005	<0.005	<0.010	<0.005	<0.005	<0.0038	<500	0.57	<50	<50
E PIT-N WALL 6FT	04/21/2022	6	<0.0020	<0.0050	<0.0050	<0.010	<0.0050	<0.0050	<0.0038	<500	<0.50	<50	<50
METER-FLOOR 3FT	04/21/2022	3	<0.0020	<0.0050	<0.0050	<0.010	<0.0050	<0.0050	<0.0038	<500	<0.50	<50	<50
METER-W WALL 2FT	04/21/2022	2	<0.0020	<0.0050	<0.0050	<0.010	<0.0050	<0.0050	<0.0038	<500	<0.50	<50	<50
W PIT-W WALL 6FT	04/21/2022	6	<0.0020	<0.0050	<0.0050	<0.010	<0.0050	<0.0050	<0.0038	<500	<0.50	<50	<50

1. Bold values exceed the ECMC Table 915-1 limit(s)
 2. Red & blue highlighted soil analytical values indicate an exceedance of the referenced soil screening level (SSL)
 3. * Indicates laboratory minimum detection limit in excess of SSL
 4. ** Summation of GRO+DRO+ORO must be less than 500 mg/kg
- NA - Not analyzed

= Material excavated and transported off site for disposal.

TABLE 2
FIELD DATA SUMMARY TABLE
NOBLE 100322
WELLS RANCH AE20, WELD COUNTY, COLORADO
REM # 26241

Sample ID	Sample Date	Depth (ft)	Acenaphthene (mg/kg)	Anthracene (mg/kg)	Benzo (a) Anthracene (mg/kg)	Benzo (a) Pyrene (mg/kg)	Benzo (b) Fluoranthene (mg/kg)	Benzo (k) Fluoranthene (mg/kg)	Chrysene (mg/kg)	Dibenzo (a,h) Anthracene (mg/kg)	Fluoranthene (mg/kg)	Fluorene (mg/kg)	Indeno (1,2,3-cd) Pyrene (mg/kg)	Pyrene (mg/kg)	1-Methyl - Naphthalene (mg/kg)	2-Methyl- Naphthalene (mg/kg)
ECMC Table 915-1 Limits (Residential SSL)			360	1800	1.1	0.11	1.1	11	110	0.11	240	240	1.1	180	18	24
ECMC Table 915-1 Limits (Protection of Groundwater SSL)			0.55	5.8	0.011	0.24	0.3	2.9	9	0.096	8.9	0.54	0.98	1.3	0.006	0.019
TP-N 3 Ft	4/7/2022	3	<0.00067	<0.00067	<0.00067	<0.00067	<0.00067	<0.00067	<0.00067	<0.00067	<0.00067	<0.00067	<0.00067	<0.00067	<0.00067	<0.00067
TP-S 5 Ft	4/7/2022	5	<0.00067	<0.00067	<0.00067	<0.00067	<0.00067	<0.00067	<0.00067	<0.00067	<0.00067	<0.00067	<0.00067	<0.00067	<0.00067	<0.00067
TP-Mid 4 Ft	4/7/2022	4	<0.00067	<0.00067	<0.00067	<0.00067	<0.00067	<0.00067	<0.00067	<0.00067	<0.00067	<0.00067	<0.00067	<0.00067	<0.00067	<0.00067
TP-E 2 Ft	4/7/2022	2	<0.00067	<0.00067	<0.00067	<0.00067	<0.00067	<0.00067	<0.00067	<0.00067	<0.00067	<0.00067	<0.00067	<0.00067	<0.00067	<0.00067
BKG-1 1 Ft	4/7/2022	1	<0.00067	<0.00067	<0.00067	<0.00067	<0.00067	<0.00067	<0.00067	<0.00067	<0.00067	<0.00067	<0.00067	<0.00067	<0.00067	<0.00067
N. EX. NWALL 2FT	4/13/2022	2	<0.00500	<0.00500	<0.00500	<0.00500	<0.00500	<0.00500	0.0444	<0.00500	0.00875	0.124	<0.00500	0.0233	0.418	0.304
N. EX. EWALL 2FT	4/13/2022	2	0.00879	0.097	0.0166	<0.00500	<0.00500	<0.00500	0.0153	<0.00500	<0.00500	0.0482	<0.00500	0.00768	0.255	0.245
N. EX. MID 2FT	4/13/2022	2	<0.00500	0.00566	<0.00500	<0.00500	<0.00500	<0.00500	<0.00500	<0.00500	<0.00500	<0.00500	<0.00500	<0.00500	<0.00500	<0.00500
N. EX. WWALL 3FT	4/13/2022	3	<0.00500	<0.00500	<0.00500	<0.00500	<0.00500	<0.00500	<0.00500	<0.00500	<0.00500	<0.00500	<0.00500	<0.00500	<0.00500	<0.00500
E PIT NWALL 5FT	4/13/2022	5	<0.00500	<0.00500	<0.00500	<0.00500	<0.00500	<0.00500	<0.00500	<0.00500	<0.00500	<0.00500	<0.00500	<0.00500	<0.00500	<0.00500
E PIT SWALL 5FT	4/13/2022	5	<0.00500	<0.00500	<0.00500	<0.00500	<0.00500	<0.00500	0.052	<0.00500	<0.00500	0.136	<0.00500	0.0415	1.74	1.67
E PIT EWALL 5FT	4/13/2022	5	<0.00500	<0.00500	<0.00500	<0.00500	<0.00500	<0.00500	<0.00500	<0.00500	<0.00500	<0.00500	<0.00500	<0.00500	<0.00500	<0.00500
E PIT WWALL 5FT	4/13/2022	5	<0.00500	<0.00500	<0.00500	<0.00500	<0.00500	<0.00500	<0.00500	<0.00500	<0.00500	<0.00500	<0.00500	<0.00500	0.00741	0.00723
E PIT FLOOR 7FT	4/13/2022	7	<0.00500	<0.00500	<0.00500	<0.00500	<0.00500	<0.00500	<0.00500	<0.00500	<0.00500	<0.00500	<0.00500	<0.00500	<0.00500	<0.00500
WPIT NWALL 5FT	4/13/2022	5	<0.00500	<0.00500	<0.00500	<0.00500	<0.00500	<0.00500	<0.00500	<0.00500	<0.00500	<0.00500	<0.00500	<0.00500	<0.00500	<0.00500
WPIT SWALL 5FT	4/13/2022	5	<0.00500	<0.00500	<0.00500	<0.00500	<0.00500	<0.00500	<0.00500	<0.00500	<0.00500	<0.00500	<0.00500	<0.00500	<0.00500	<0.00500
WPIT EWALL 5FT	4/13/2022	5	<0.00500	<0.00500	<0.00500	<0.00500	<0.00500	<0.00500	<0.00500	<0.00500	<0.00500	<0.00500	<0.00500	<0.00500	<0.00500	<0.00500
WPIT WWALL 5FT	4/13/2022	5	<0.00500	<0.00500	<0.00500	<0.00500	<0.00500	<0.00500	0.0334	<0.00500	<0.00500	0.109	<0.00500	0.0213	0.708	0.712
WPIT FLOOR 7FT	4/13/2022	7	<0.00500	<0.00500	<0.00500	<0.00500	<0.00500	<0.00500	<0.00500	<0.00500	<0.00500	<0.00500	<0.00500	<0.00500	<0.00500	<0.00500
E PIT-N WALL 6FT	04/21/2022	6	<0.00500	<0.00500	<0.00500	<0.00500	<0.00500	<0.00500	<0.00500	<0.00500	<0.00500	<0.00500	<0.00500	<0.00500	<0.00500	<0.00500
METER-FLOOR 3FT	04/21/2022	3	<0.00500	<0.00500	<0.00500	<0.00500	<0.00500	<0.00500	<0.00500	<0.00500	<0.00500	<0.00500	<0.00500	<0.00500	<0.00500	<0.00500
METER-W WALL 2FT	04/21/2022	2	<0.00500	<0.00500	<0.00500	<0.00500	<0.00500	<0.00500	<0.00500	<0.00500	<0.00500	<0.00500	<0.00500	<0.00500	<0.00500	<0.00500
W PIT-W WALL 6FT	04/21/2022	6	<0.00500	<0.00500	<0.00500	<0.00500	<0.00500	<0.00500	<0.00500	<0.00500	<0.00500	<0.00500	<0.00500	<0.00500	<0.00500	<0.00500

1. Bold values exceed the ECMC Table 915-1 limit(s)
 2. Red & blue highlighted soil analytical values indicate an exceedance of the referenced soil screening level (SSL)
 3. * Indicates laboratory minimum detection limit in excess of SSL
- NA - Not analyzed

= Material excavated and transported off site for disposal.

TABLE 3
FIELD DATA SUMMARY TABLE
NOBLE 100322
WELLS RANCH AE20, WELD COUNTY, COLORADO
REM # 26241

Sample ID	Sample Date	Depth (ft)	pH (Standard Units)	EC (mmhos/cm)	SAR (Standard Units)	Boron (mg/L)
ECMC Table 915-1 Soil Suitability Limits			6 - 8.3	<4	<6	2
TP-N 3 Ft	4/7/2022	3	8.08	0.274	0.669	0.178
TP-S 5 Ft	4/7/2022	5	7.65	0.783	2.44	0.357
TP-Mid 4 Ft	4/7/2022	4	8.07	0.368	0.818	0.236
TP-E 2 Ft	4/7/2022	2	8.02	0.452	0.231	0.100
BKG-1 1 Ft	4/7/2022	1	8.26	0.336	1.11	0.535
N. Ex. N Wall 3 Ft	4/13/2022	3	7.64	0.383	0.475	0.059
N. Ex. E Wall 2 Ft	4/13/2022	2	7.71	1.54	1.12	0.109
N. Ex. Mid 2 Ft	4/13/2022	2	7.95	0.230	0.240	0.0913
N. Ex. W Wall 3 Ft	4/13/2022	3	7.95	0.196	0.176	0.072
E Pit N Wall 5 Ft	4/13/2022	5	7.82	1.16	1.95	0.149
E Pit S Wall 5 Ft	4/13/2022	5	8.08	0.355	1.42	0.158
E Pit E Wall 5 Ft	4/13/2022	5	7.92	0.590	1.95	0.155
E Pit W Wall 5 Ft	4/13/2022	5	7.99	0.460	1.83	0.150
E Pit Floor 7 Ft	4/13/2022	7	7.60	0.783	1.76	0.161
W Pit N Wall 5 Ft	4/13/2022	5	7.69	4.13	21.5	1.60
W Pit S Wall 5 Ft	4/13/2022	5	7.79	5.78	48.8	1.27
W Pit E Wall 5 Ft	4/13/2022	5	7.89	2.41	3.54	0.148
W Pit W Wall 5 Ft	4/13/2022	5	7.70	7.35	10.6	0.466
W Pit Floor 7 Ft	4/13/2022	7	7.79	0.868	1.94	0.179
E PIT-N WALL 6FT	04/21/2022	6	8.77	0.211	0.0711	0.215
METER-FLOOR 3FT	04/21/2022	3	8.67	0.175	0.0292	0.200
METER-W WALL 2FT	04/21/2022	2	8.53	0.177	0.0201	0.171

Sample ID	Sample Date	Depth (ft)	pH (Standard Units)	EC (mmhos/cm)	SAR (Standard Units)	Boron (mg/L)
ECMC Table 915-1 Soil Suitability Limits			6 - 8.3	<4	<6	2
W PIT-W WALL 6FT	04/21/2022	6	8.61	0.354	0.0626	0.235
BKG E-N 6FT	03/01/2023	6	8.09	NA	NA	NA
BKG E-S 6FT	03/01/2023	6	7.89	NA	NA	NA
BKG N 6FT	03/01/2023	6	8.52	NA	NA	NA
BKG S 6FT	03/01/2023	6	6.21	NA	NA	NA
BKG W 6FT	03/01/2023	6	7.96	NA	NA	NA
BKG-A 3FT	08/08/2024	3	8.81	0.162	0.083	NA
BKG-A 5FT	08/08/2024	5	8.45	0.498	1.19	NA
BKG-A 7FT	08/08/2024	7	8.02	3.11	3.76	NA
BKG-B 3FT	08/08/2024	3	7.33	1.64	1.97	NA
BKG-B 5FT	08/08/2024	5	7.69	1.31	0.551	NA
BKG-B 6FT	08/08/2024	6	8.28	0.620	0.293	NA
BKG-B 7FT	08/08/2024	7	7.41	0.969	2.75	NA
BKG-C 3FT	08/08/2024	3	7.34	0.102	0.0214	NA
BKG-C 5FT	08/08/2024	5	6.02	0.300	0.0372	NA
BKG-C 6FT	08/08/2024	6	6.73	0.428	0.301	NA
BKG-C 7FT	08/08/2024	7	8.12	0.600	0.196	NA
BKG-D 3FT	08/08/2024	3	8.16	0.122	0.104	NA
BKG-D 5FT	08/08/2024	5	8.35	0.190	0.264	NA
BKG-D 6FT	08/08/2024	6	9.20	0.113	0.290	NA
BKG-D 7FT	08/08/2024	7	8.71	0.191	0.419	NA
BKG-E 3FT	08/08/2024	3	8.35	0.654	0.729	NA
BKG-E 5FT	08/08/2024	5	8.85	0.265	0.568	NA
BKG-E 6FT	08/08/2024	6	8.78	0.300	0.532	NA

Sample ID	Sample Date	Depth (ft)	pH (Standard Units)	EC (mmhos/cm)	SAR (Standard Units)	Boron (mg/L)
ECMC Table 915-1 Soil Suitability Limits			6 - 8.3	<4	<6	2
BKG-E 7FT	08/08/2024	7	8.86	0.283	0.771	NA
Maximum Background Concentration			9.20	3.11	3.76	NA

1. Bold faced values exceed the ECMC Table 915-1 limit(s)

2. Blue highlighted soil analytical values indicate a regulatory exceedance

NA - Not analyzed

= Material excavated and transported off site for disposal.

TABLE 4
FIELD DATA SUMMARY TABLE
NOBLE 100322
WELLS RANCH AE20, WELD COUNTY, COLORADO
REM # 26241

Sample ID	Sample Date	Depth (ft)	Arsenic (mg/kg)	Barium (mg/kg)	Cadmium (mg/kg)	Chromium (VI) (mg/kg)	Copper (mg/kg)	Lead (mg/kg)	Nickel (mg/kg)	Selenium (mg/kg)	Silver (mg/kg)	Zinc (mg/kg)
ECMC Table 915-1 Limits (Residential SSL)			0.68	15000	71	0.3	3100	400	1500	390	390	23000
ECMC Table 915-1 Limits (Protection of Groundwater SSL)			0.29	82	0.38	0.00067	46	14	26	0.26	0.8	370
TP-N 3 Ft	4/7/2022	3	2.23	63.8	0.122	<0.250	5.43	6.11	6.42	0.2	0.0211	27.3
TP-S 5 Ft	4/7/2022	5	3.12	62.1	0.0992	<0.244	6.33	8.95	6.64	0.232	0.0255	31.1
TP-Mid 4 Ft	4/7/2022	4	2.09	53.9	0.108	<0.247	5.61	5.39	5.95	0.233	0.021	26.6
TP-E 2 Ft	4/7/2022	2	3.93	56.6	0.114	<0.245	5.59	6.58	7.78	0.275	0.0177	27.6
BKG-1 1 Ft	4/7/2022	1	2.15	87.4	0.079	<0.244	4.06	4.78	5.04	0.322	0.0136	20.3
N. EX. NWALL 2FT	4/13/2022	2	2.26	69.8	<0.205	<0.30	3.31	3.03	4.27	0.486	<0.0205	17.0
N. EX. EWALL 2FT	4/13/2022	2	4.61	87.8	<0.226	<0.30	8.50	8.18	9.62	0.788	0.0295	53.8
N. EX. MID 2FT	4/13/2022	2	3.57	95.7	<0.229	<0.30	5.85	6.87	7.94	0.647	<0.0229	34.5
N. EX. WWALL 3FT	4/13/2022	3	3.56	82.9	<0.227	<0.30	5.78	6.41	7.81	0.701	<0.0227	36.7
E PIT NWALL 5FT	4/13/2022	5	4.45	90.7	<0.241	<0.30	6.51	9.88	7.83	0.728	0.0308	38.8
E PIT SWALL 5FT	4/13/2022	5	5.85	109	<0.232	<0.30	6.77	7.68	7.15	0.773	0.0303	32.6
E PIT EWALL 5FT	4/13/2022	5	4.09	82.3	<0.242	<0.30	7.15	7.12	8.35	0.812	0.0276	38.4
E PIT WWALL 5FT	4/13/2022	5	4.13	173	<0.262	<0.30	5.53	7.03	8.34	0.761	0.0297	35.5
E PIT FLOOR 7FT	4/13/2022	7	13.7	93.7	<0.255	<0.30	19.3	23.6	9.94	0.885	0.0800	11.7
WPIT NWALL 5FT	4/13/2022	5	6.43	109	<0.235	<0.30	7.35	9.55	12.2	0.963	0.0644	43.7
WPIT SWALL 5FT	4/13/2022	5	5.44	85.9	<0.246	<0.30	8.22	7.95	8.87	0.909	0.0371	44.1
WPIT EWALL 5FT	4/13/2022	5	7.88	77.3	<0.239	<0.30	8.37	9.10	7.55	0.799	0.0364	42.0
WPIT WWALL 5FT	4/13/2022	5	5.19	108	<0.231	<0.30	5.53	7.55	8.86	0.762	0.0293	35.4
WPIT FLOOR 7FT	4/13/2022	7	31.0	39.0	<0.252	<0.30	18.3	13.0	6.59	0.657	0.0809	27.7
E PIT-N WALL 6FT	04/21/2022	6	4.81	70.4	0.389	<0.30	9.73	9.14	11.0	1.09	0.0396	55.8
METER-FLOOR 3FT	04/21/2022	3	3.91	73.1	<0.229	<0.30	6.25	7.00	7.07	0.698	0.0307	36.5
METER-W WALL 2FT	04/21/2022	2	3.48	176	<0.229	<0.30	4.82	5.71	6.64	0.599	0.0350	24.7
W PIT-W WALL 6FT	04/21/2022	6	5.01	101	<0.238	<0.30	7.12	7.75	9.46	0.735	0.0378	37.8

Sample ID	Sample Date	Depth (ft)	Arsenic (mg/kg)	Barium (mg/kg)	Cadmium (mg/kg)	Chromium (VI) (mg/kg)	Copper (mg/kg)	Lead (mg/kg)	Nickel (mg/kg)	Selenium (mg/kg)	Silver (mg/kg)	Zinc (mg/kg)
ECMC Table 915-1 Limits (Residential SSL)			0.68	15000	71	0.3	3100	400	1500	390	390	23000
ECMC Table 915-1 Limits (Protection of Groundwater SSL)			0.29	82	0.38	0.00067	46	14	26	0.26	0.8	370
BKG E-N 6FT	03/01/2023	6	1.41	85.8	0.123	<0.30	3.23	3.64	2.43	<0.260	0.0140	12.6
BKG E-S 6FT	03/01/2023	6	1.55	344	0.137	<0.30	4.21	3.38	2.94	<0.260	0.0177	14.4
BKG N 6FT	03/01/2023	6	2.87	61.8	0.129	<0.30	2.54	4.14	3.02	<0.260	0.0134	10.3
BKG S 6FT	03/01/2023	6	1.64	22.5	0.110	<0.30	3.93	5.51	2.28	<0.260	0.0214	15.5
BKG W 6FT	03/01/2023	6	1.45	78.4	0.129	<0.30	3.88	4.78	2.55	<0.260	0.0158	15.6
125% Maximum Background Concentration			3.59	430	0.17125	<0.30	5.2625	6.8875	3.775	0.40	0.0268	19.5

1. Bold values exceed the ECMC Table 915-1 limit(s)

2. Red & blue highlighted soil analytical values indicate an exceedance of the referenced soil screening level (SSL)

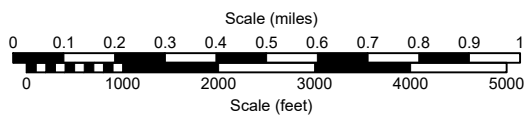
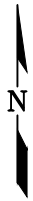
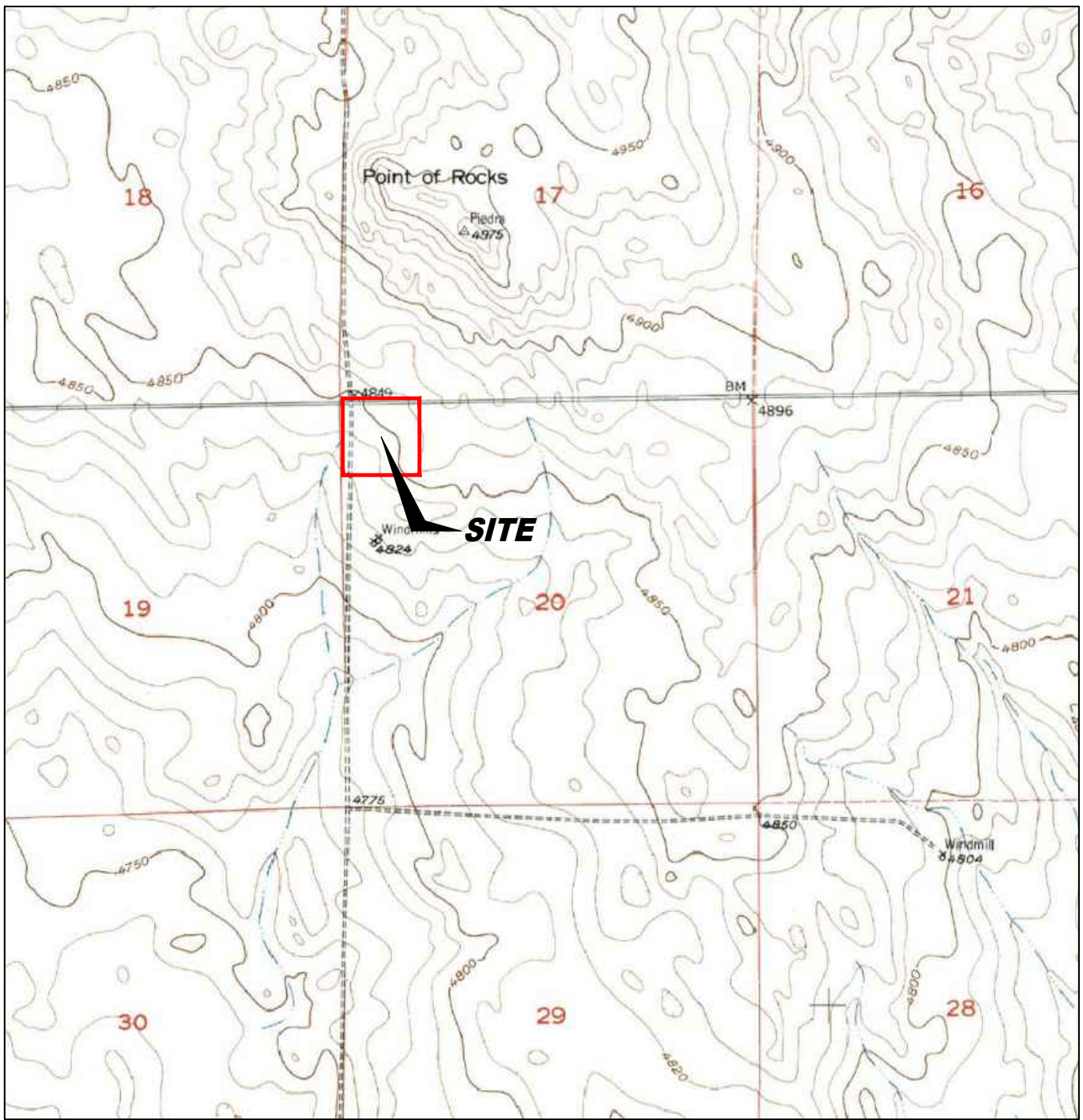
* Indicates laboratory minimum detection limit in excess of SSL

NA - Not analyzed

= Material excavated and transported off site for disposal.


TABLE 5
SUMMARY OF ARSENIC (As) CONCENTRATION IN EXCAVATED SOILS CALCULATION (BASED ON REPORTED SPILL VOLUME)
NOBLE MIDSTREAM
WELLS RANCH AE20 (FLOW LINE), WELD COUNTY, COLORADO
FREMONT PROJECT NO. C022-037

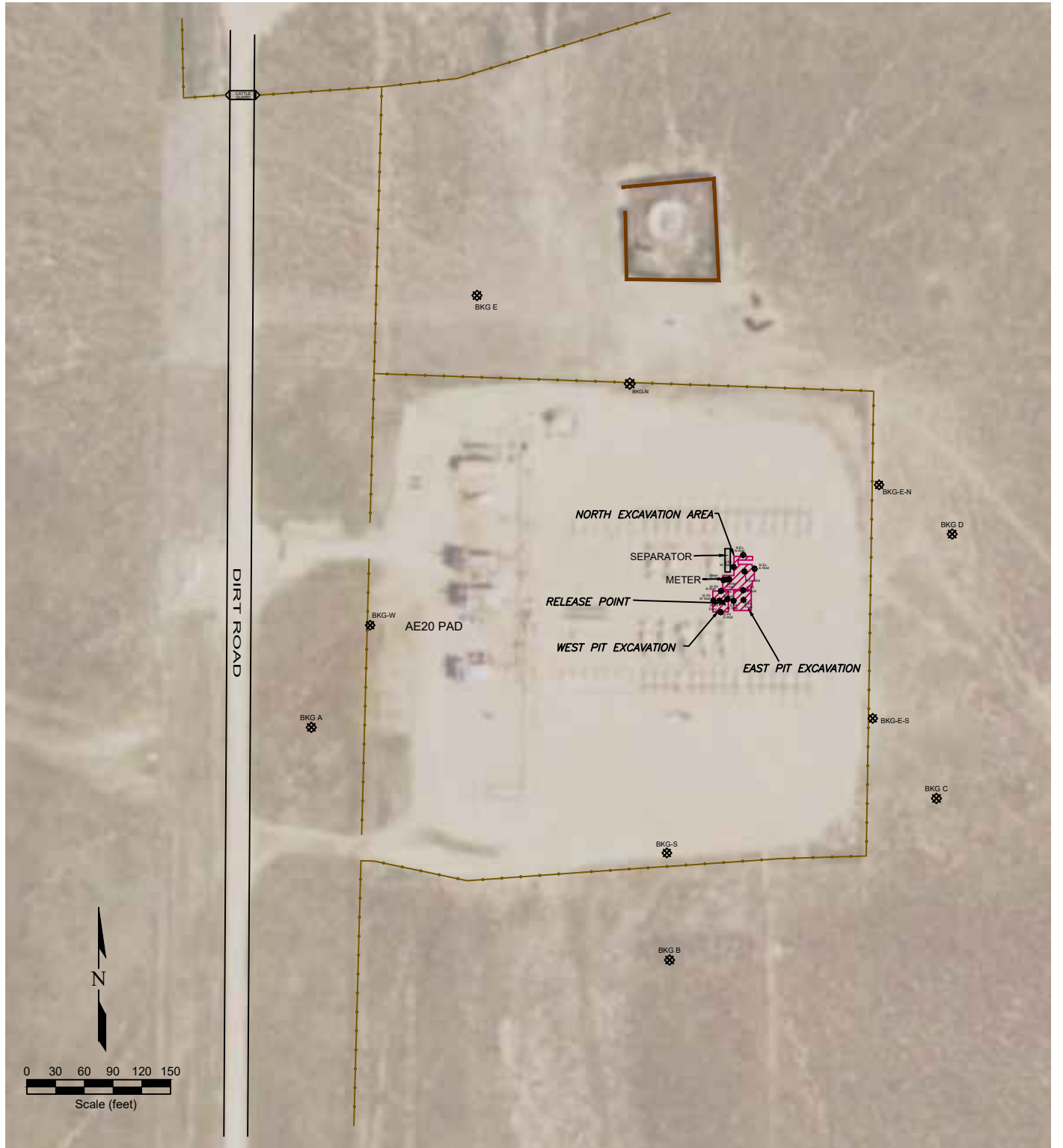
Produced H2O Release Volume (bbl)	Produced H2O Volume (L)	As Concentration (ug/L)	As Mass (mg)	Soil Excavated (T)	Soil Excavated (kg)	As Concentration (mg/kg)
27	27bbl x 159L/bbl 4293	11.98	11.98ug/L x 24,009L/100 51.43014	749	749T x 907kg/T 679343	51.43mg / 679343kg 0.0000757057



USGS 7.5 MINUTE SERIES (TOPOGRAPHIC)

Figure 1
SITE LOCATION MAP
NOBLE ENERGY, INC.
WELLS RANCH AE20 FLOW LINE
 SWNW Sec. 20 T6N, R62W, 6th PM
 Weld County, Colorado
 40.473371°, -104.354575°

Project No. C022-037	Prepared by	Drawn by TA	
Date 8/28/24	Reviewed by EB	Filename 22037T	



LEGEND

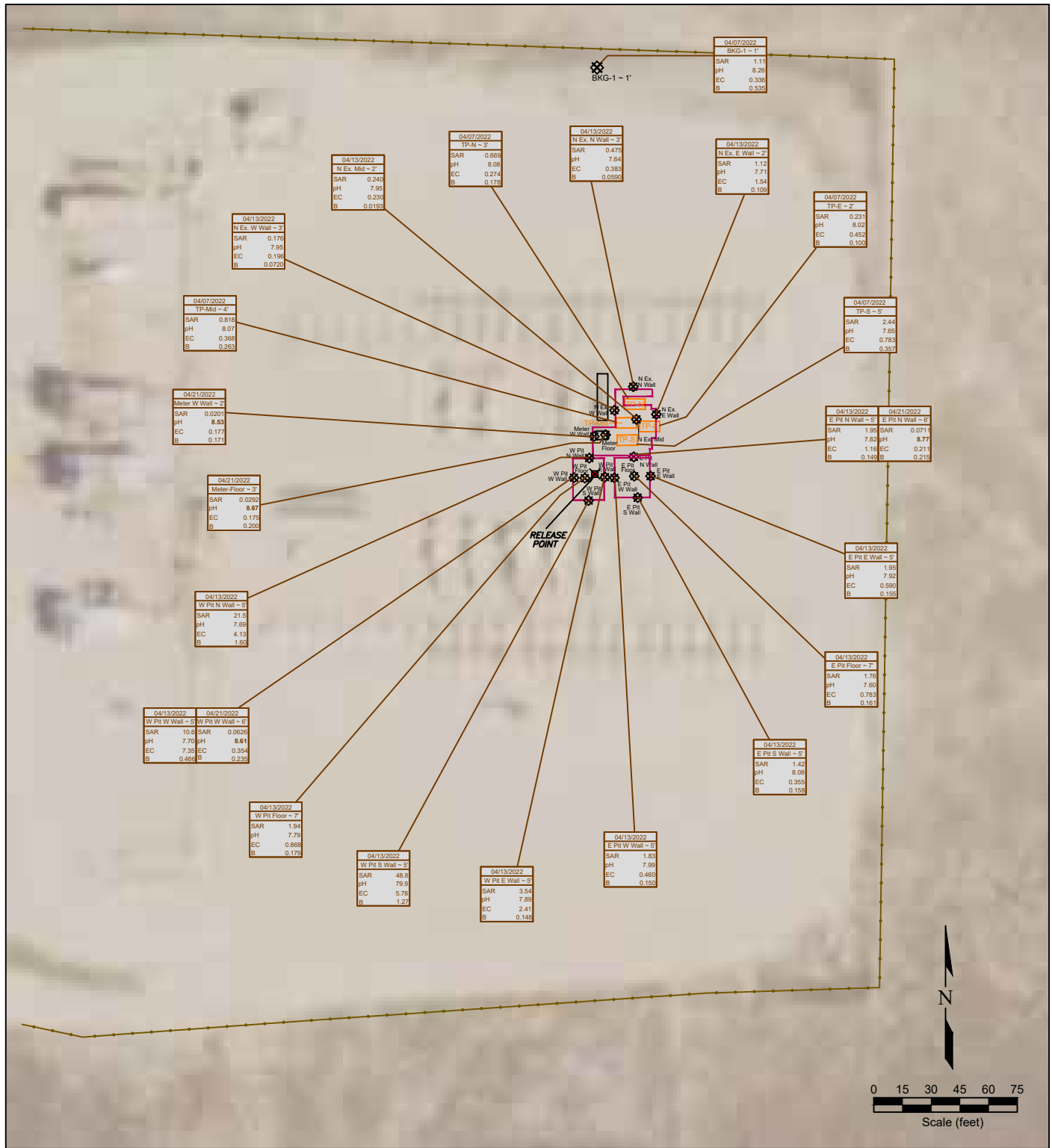
- RELEASE POINT
- SOIL SAMPLE LOCATION
- EXCAVATED AREAS
- EXTENT OF EXCAVATION
- CONTAINMENT WALL
- FENCE LINE

**Figure 2
SITE MAP**

NOBLE ENERGY, INC.
WELLS RANCH AE20 FLOW LINE
 SWNW Sec. 20 T6N, R62W, 6th PM
 Weld County, Colorado
 40.473371°, -104.354575°

Project No. C022-037	Prepared by	Drawn by TA
Date 8/28/24	Reviewed by EB	Filename 22037Q1





LEGEND

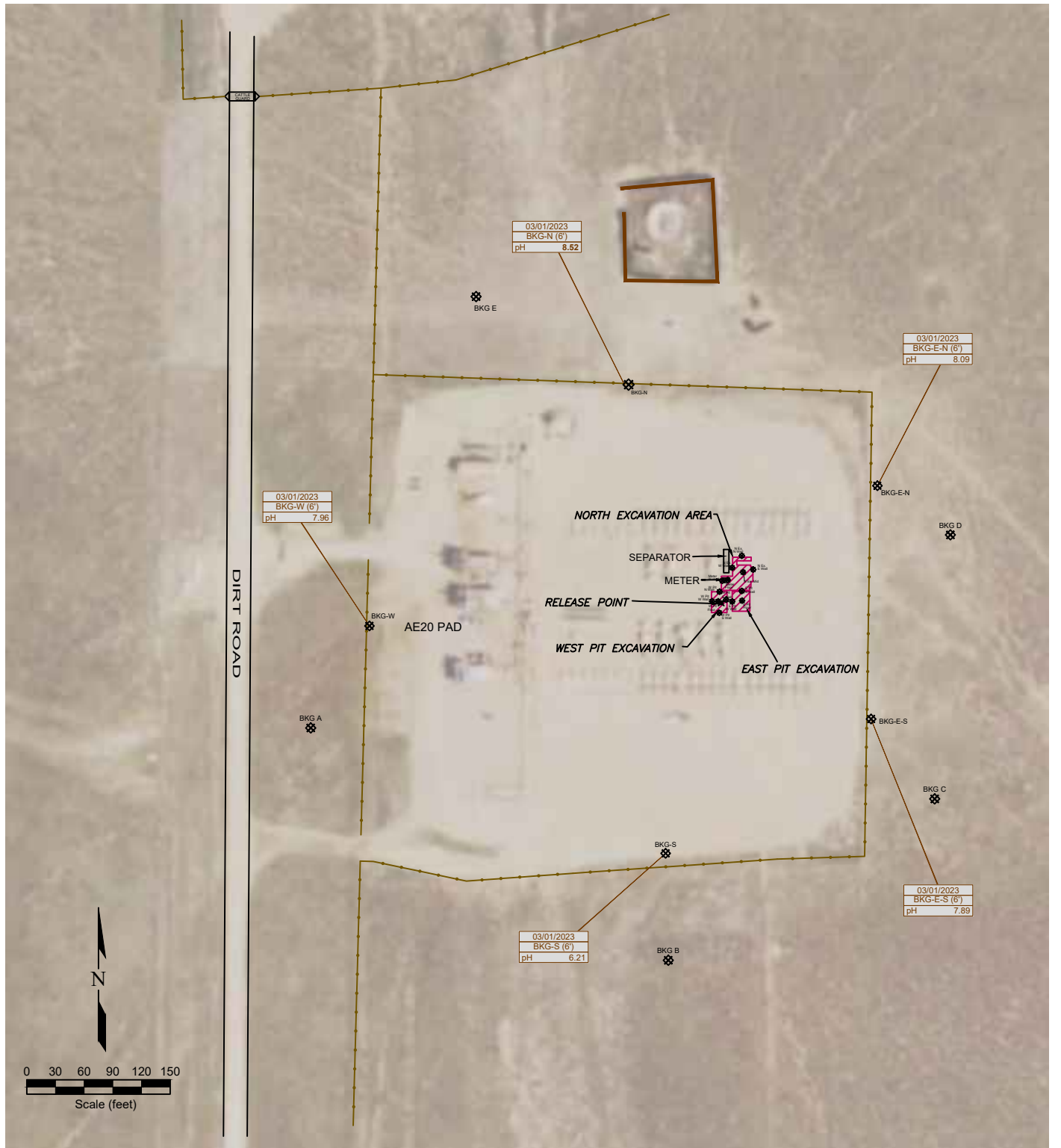
- ✖ RELEASE POINT
- ⊗ SOIL SAMPLE LOCATION
- ⊞ TEST PIT LOCATION
- ▭ EXCAVATED AREAS
- ▭ EXTENT OF EXCAVATION
- CONTAINMENT WALL
- FENCE LINE

DATE SAMPLED	SAMPLE ID & DEPTH (ft)
04/07/2022	TP-N-3'
SAR	0.668
pH	8.08
EC	0.274
B	0.178
DATE SAMPLED <th>SAMPLE ID & DEPTH (ft)</th>	SAMPLE ID & DEPTH (ft)
04/13/2022	N Ex. W Wall-2'
SAR	0.246
pH	7.95
EC	0.230
B	0.0193
DATE SAMPLED <th>SAMPLE ID & DEPTH (ft)</th>	SAMPLE ID & DEPTH (ft)
04/13/2022	TP-N-3'
SAR	0.668
pH	8.08
EC	0.274
B	0.178
DATE SAMPLED <th>SAMPLE ID & DEPTH (ft)</th>	SAMPLE ID & DEPTH (ft)
04/13/2022	N Ex. N Wall-3'
SAR	0.475
pH	7.64
EC	0.383
B	0.0595
DATE SAMPLED <th>SAMPLE ID & DEPTH (ft)</th>	SAMPLE ID & DEPTH (ft)
04/13/2022	N Ex. E Wall-2'
SAR	1.12
pH	7.71
EC	1.54
B	0.105
DATE SAMPLED <th>SAMPLE ID & DEPTH (ft)</th>	SAMPLE ID & DEPTH (ft)
04/07/2022	TP-E-2'
SAR	0.231
pH	8.02
EC	0.452
B	0.100
DATE SAMPLED <th>SAMPLE ID & DEPTH (ft)</th>	SAMPLE ID & DEPTH (ft)
04/07/2022	TP-S-5'
SAR	2.44
pH	7.65
EC	0.783
B	0.357
DATE SAMPLED <th>SAMPLE ID & DEPTH (ft)</th>	SAMPLE ID & DEPTH (ft)
04/13/2022	E Pit N Wall-5'
SAR	1.95
pH	7.82
EC	1.18
B	0.145
DATE SAMPLED <th>SAMPLE ID & DEPTH (ft)</th>	SAMPLE ID & DEPTH (ft)
04/21/2022	E Pit N Wall-6'
SAR	0.0714
pH	8.77
EC	0.211
B	0.215
DATE SAMPLED <th>SAMPLE ID & DEPTH (ft)</th>	SAMPLE ID & DEPTH (ft)
04/13/2022	E Pit E Wall-5'
SAR	1.95
pH	7.92
EC	0.598
B	0.155
DATE SAMPLED <th>SAMPLE ID & DEPTH (ft)</th>	SAMPLE ID & DEPTH (ft)
04/13/2022	E Pit Floor-7'
SAR	1.78
pH	7.60
EC	0.783
B	0.161
DATE SAMPLED <th>SAMPLE ID & DEPTH (ft)</th>	SAMPLE ID & DEPTH (ft)
04/13/2022	E Pit S Wall-5'
SAR	1.42
pH	8.08
EC	0.355
B	0.158
DATE SAMPLED <th>SAMPLE ID & DEPTH (ft)</th>	SAMPLE ID & DEPTH (ft)
04/13/2022	E Pit W Wall-5'
SAR	1.83
pH	7.99
EC	0.460
B	0.150
DATE SAMPLED <th>SAMPLE ID & DEPTH (ft)</th>	SAMPLE ID & DEPTH (ft)
04/13/2022	W Pit Floor-7'
SAR	1.94
pH	7.79
EC	0.868
B	0.173
DATE SAMPLED <th>SAMPLE ID & DEPTH (ft)</th>	SAMPLE ID & DEPTH (ft)
04/13/2022	W Pit S Wall-5'
SAR	48.8
pH	79.9
EC	5.78
B	1.27
DATE SAMPLED <th>SAMPLE ID & DEPTH (ft)</th>	SAMPLE ID & DEPTH (ft)
04/13/2022	W Pit E Wall-5'
SAR	3.54
pH	7.89
EC	2.41
B	0.148
DATE SAMPLED <th>SAMPLE ID & DEPTH (ft)</th>	SAMPLE ID & DEPTH (ft)
04/13/2022	W Pit W Wall-5'
SAR	10.8
pH	7.70
EC	7.35
B	0.468
DATE SAMPLED <th>SAMPLE ID & DEPTH (ft)</th>	SAMPLE ID & DEPTH (ft)
04/21/2022	W Pit W Wall-6'
SAR	0.0626
pH	8.81
EC	0.354
B	0.235

Figure 3
INORGANIC SOIL CHEMISTRY MAP
 April 7, 2022; April 13, 2022; April 21, 2022
NOBLE ENERGY, INC.
WELLS RANCH AE20 FLOW LINE
 SWNW Sec. 20 T6N, R62W, 6th PM
 Weld County, Colorado
 40.473371°, -104.354575°

Project No. C022-037	Prepared by TA	Drawn by TA
Date 8/28/24	Reviewed by EB	Filename 20037QQ





LEGEND

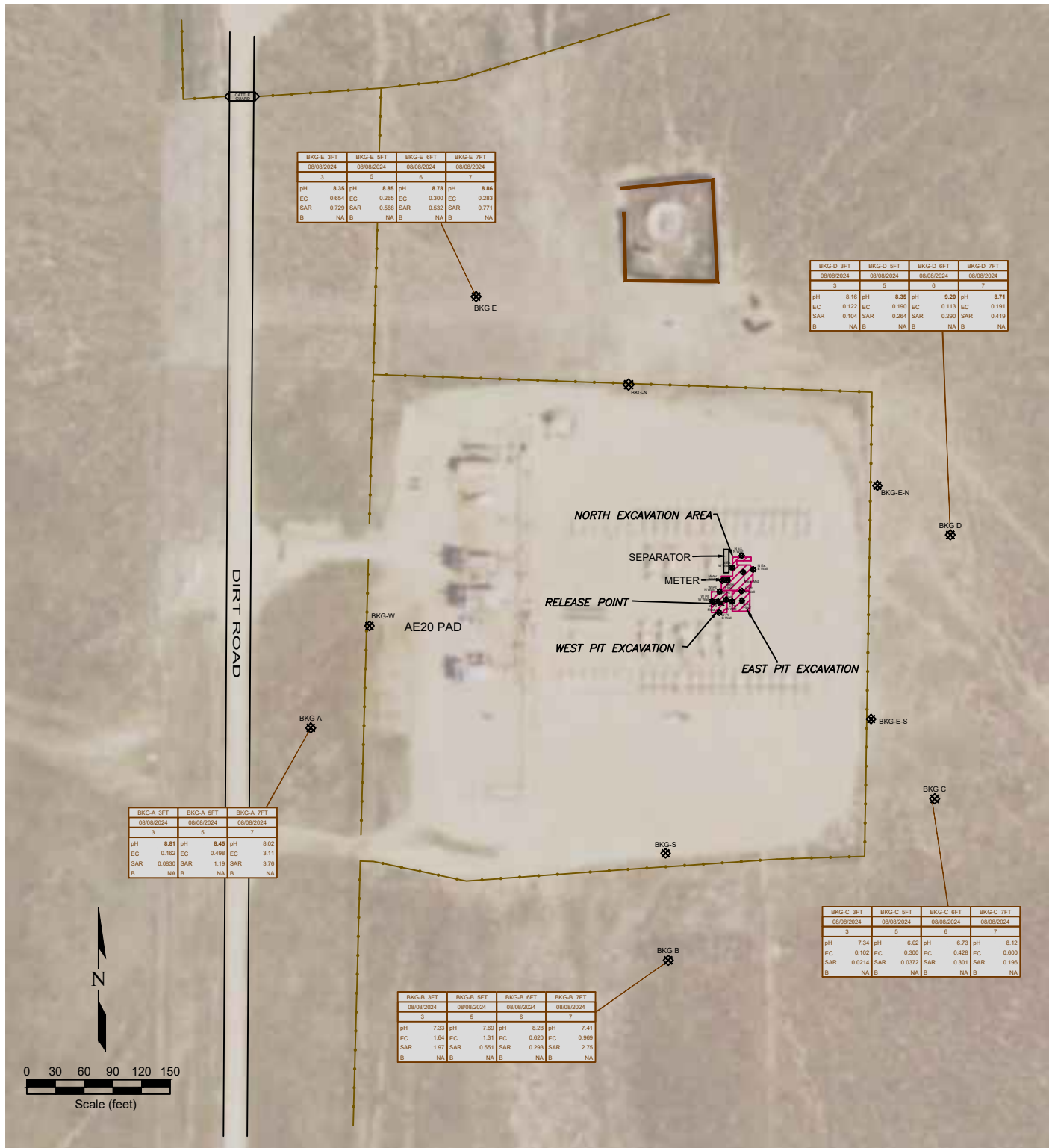
- RELEASE POINT
- SOIL SAMPLE LOCATION
- EXCAVATED AREAS
- EXTENT OF EXCAVATION
- CONTAINMENT WALL
- FENCE LINE

03/01/2023	DATE SAMPLED
BKG-N (6')	SAMPLE ID & DEPTH (ft)
pH 8.52	pH (pH units)

Figure 4
pH SOIL CHEMISTRY MAP
 March 1, 2023
NOBLE ENERGY, INC.
WELLS RANCH AE20 FLOW LINE
 SWNW Sec. 20 T6N, R62W, 6th PM
 Weld County, Colorado
 40.473371°, -104.354575°

Project No. C022-037	Prepared by TA	Drawn by TA
Date 8/28/24	Reviewed by EB	Filename 22037Q1





LEGEND

- RELEASE POINT
- EXCAVATED AREAS
- CONTAINMENT WALL
- SOIL SAMPLE LOCATION
- EXTENT OF EXCAVATION
- FENCE LINE

BKGA-3FT	SAMPLE ID
08/08/2024	DATE SAMPLED
3	DEPTH (ft)
pH 8.81	pH (pH units)
EC 0.162	EC (microhm/cm)
SAR 0.0630	SAR (units)
B NA	BORON (mg/L)

Figure 5
BACKGROUND SAMPLE SOIL CHEMISTRY MAP
 August 8, 2024
NOBLE ENERGY, INC.
WELLS RANCH AE20 FLOW LINE
 SWNW Sec. 20 T6N, R62W, 6th PM
 Weld County, Colorado
 40.473371°, -104.354575°

Project No. C022-037	Prepared by TA	Drawn by TA
Date 8/28/24	Reviewed by EB	Filename 22037Q1

