

TABLE 1
FIELD DATA SUMMARY TABLE
NOBLE 100322
SAUER F33-33, WELD COUNTY, COLORADO
REM # 29716

Sample ID	Sample Date	Depth (ft)	GPS Data Latitude/Longitude		PDOP Value	VOC Concentration (ppm)
WH01	5/30/2025	2	40.352069	-104.677147	0.70	0.0
FL01	5/30/2025	2	40.351770	-104.676347	0.70	0.0
FL02	5/30/2025	2	40.351503	-104.675504	0.70	0.0
FL03	5/30/2025	2	40.351234	-104.674697	0.70	0.0
FL04	5/30/2025	2	40.351066	-104.674218	0.80	0.0
FL05	5/30/2025	2	40.351660	-104.674172	0.70	0.0
FL08	5/30/2025	2	40.351163	-104.672821	0.80	0.0
FL10	5/30/2025	2	40.350598	-104.672837	0.80	0.0
FL11	5/30/2025	2	40.350529	-104.672616	0.80	0.0
FL12	5/30/2025	2	40.350542	-104.672330	0.80	0.0
SEP01	5/30/2025	2	40.350569	-104.672329	0.80	0.0

1. Global Positioning System (GPS) data is provided in decimal degrees using North American Datum (NAD) 83 UTMZone 13 North.

2. Volatile organic compound (VOC) concentrations are measured in the field using a photoionization detector (PID).

PDOP = Position Dilution of Precision

ppm = Parts per million

in. = Inches

ft. = Feet

bgs = Below ground surface

TABLE 2
SUMMARY OF VOLATILE ORGANIC SOIL CHEMISTRY DATA
NOBLE 100322
SAUER F33-33, WELD COUNTY, COLORADO
REM # 29716

Sample ID	Sample Date	Depth (ft)	Benzene (mg/kg)	Toluene (mg/kg)	Ethyl-Benzene (mg/kg)	Xylenes (mg/kg)	1,2,4-Trimethyl-Benzene (mg/kg)	1,3,5-Trimethyl-Benzene (mg/kg)	Naphthalene (mg/kg)	TPH (mg/kg)	TPH GRO (mg/kg)	TPH DRO (mg/kg)	TPH ORO (mg/kg)
ECMC Table 915-1 Limits (Residential SSL)			1.2	490	5.8	58	30	27	2	500	500**		
ECMC Table 915-1 Limits (Protection of Groundwater SSL)			0.0026	0.69	0.78	9.9	0.0081	0.0087	0.0038	500	500**		
WH01 2FT	05/30/2025	2	<0.00100	<0.0100	<0.0100	<0.100	<0.00500	<0.00500	<0.00300	<500	<0.100	<40.0	48.4
FL01 2FT	05/30/2025	2	<0.00100	<0.0100	<0.0100	<0.100	<0.00500	<0.00500	<0.00300	<500	<0.100	<4.00	<4.00
FL02 2FT	05/30/2025	2	<0.00100	<0.0100	<0.0100	<0.100	<0.00500	<0.00500	<0.00300	<500	<0.100	<4.00	<4.00
FL03 2FT	05/30/2025	2	<0.00100	<0.0100	<0.0100	<0.100	<0.00500	<0.00500	<0.00300	<500	<0.100	<4.00	<4.00
FL04 2FT	05/30/2025	2	<0.00100	<0.0100	<0.0100	<0.100	<0.00500	<0.00500	<0.00300	<500	<0.100	<4.00	<4.00
FL05 2FT	05/30/2025	2	<0.00100	<0.0100	<0.0100	<0.100	<0.00500	<0.00500	<0.00300	<500	<0.100	<4.00	<4.00
FL06 2FT	05/30/2025	2	<0.00100	<0.0100	<0.0100	<0.100	<0.00500	<0.00500	<0.00300	<500	<0.100	<4.00	4.6
FL07 2FT	05/30/2025	2	<0.00100	<0.0100	<0.0100	<0.100	<0.00500	<0.00500	<0.00300	<500	<0.100	<4.00	<4.00
FL08 2FT	05/30/2025	2	<0.00100	<0.0100	<0.0100	<0.100	<0.00500	<0.00500	<0.00300	<500	<0.100	<4.00	<4.00
FL09 2FT	05/30/2025	2	<0.00100	<0.0100	<0.0100	<0.100	<0.00500	<0.00500	<0.00300	<500	<0.100	<4.00	21.9
FL10 2FT	05/30/2025	2	<0.00100	<0.0100	<0.0100	<0.100	<0.00500	<0.00500	<0.00300	<500	<0.100	<4.00	20.6
FL11 2FT	05/30/2025	2	<0.00100	<0.0100	<0.0100	<0.100	<0.00500	<0.00500	<0.00300	<500	<0.100	<4.00	<4.00
FL12 2FT	05/30/2025	2	<0.00100	<0.0100	<0.0100	<0.100	<0.00500	<0.00500	<0.00300	<500	<0.100	<4.00	7.11
SEP01 2FT	05/30/2025	2	<0.00100	<0.0100	<0.0100	<0.100	<0.00500	<0.00500	<0.00300	<500	<0.100	<4.00	<4.00

1. Bold values exceed the ECMC Table 915-1 limit(s)
 2. Red & blue highlighted soil analytical values indicate an exceedance of the referenced soil screening level (SSL)
 3. * Indicates laboratory minimum detection limit in excess of SSL
 4. ** Summation of GRO+DRO+ORO must be less than 500 mg/kg
- (<) = Analytical result is less than the indicated laboratory reporting limit.
TPH-GRO = Total petroleum hydrocarbons - gasoline range organics
TPH-DRO = Total petroleum hydrocarbons - diesel range organics
TPH-ORO = Total petroleum hydrocarbons - oil range organics
mg/kg = Milligrams per kilogram
ft. = Feet
bgs = Below ground surface
NA - Not analyzed

TABLE 3
SUMMARY OF POLYCYCLIC AROMATIC HYDROCARBON SOIL CHEMISTRY DATA
NOBLE 100322
SAUER F33-33, WELD COUNTY, COLORADO
REM # 29716

Sample ID	Sample Date	Depth (ft)	Acenaphthene (mg/kg)	Anthracene (mg/kg)	Benzo (a) Anthracene (mg/kg)	Benzo (a) Pyrene (mg/kg)	Benzo (b) Fluoranthene (mg/kg)	Benzo (k) Fluoranthene (mg/kg)	Chrysene (mg/kg)	Dibenzo (a,h) Anthracene (mg/kg)	Fluoranthene (mg/kg)	Fluorene (mg/kg)	Indeno (1,2,3-cd) Pyrene (mg/kg)	Pyrene (mg/kg)	1-Methyl - Naphthalene (mg/kg)	2-Methyl- Naphthalene (mg/kg)
ECMC Table 915-1 Limits (Residential SSL)			360	1800	1.1	0.11	1.1	11	110	0.11	240	240	1.1	180	18	24
ECMC Table 915-1 Limits (Protection of Groundwater SSL)			0.55	5.8	0.011	0.24	0.3	2.9	9	0.096	8.9	0.54	0.98	1.3	0.006	0.019
WHO1 2FT	05/30/2025	2	<0.0330	<0.0330	0.0225	<0.0330	0.0368	<0.0330	<0.0330	<0.0330	<0.0330	<0.0330	<0.0330	<0.0330	<0.00300	<0.0120
FL01 2FT	05/30/2025	2	<0.0330	<0.0330	<0.00600	<0.0330	<0.0330	<0.0330	<0.0330	<0.0330	<0.0330	<0.0330	<0.0330	<0.0330	<0.00300	<0.0120
FL02 2FT	05/30/2025	2	<0.0330	<0.0330	<0.00600	<0.0330	<0.0330	<0.0330	<0.0330	<0.0330	<0.0330	<0.0330	<0.0330	<0.0330	<0.00300	<0.0120
FL03 2FT	05/30/2025	2	<0.0330	<0.0330	<0.00600	<0.0330	<0.0330	<0.0330	<0.0330	<0.0330	<0.0330	<0.0330	<0.0330	<0.0330	<0.00300	<0.0120
FL04 2FT	05/30/2025	2	<0.0330	<0.0330	<0.00600	<0.0330	<0.0330	<0.0330	<0.0330	<0.0330	<0.0330	<0.0330	<0.0330	<0.0330	<0.00300	<0.0120
FL05 2FT	05/30/2025	2	<0.0330	<0.0330	<0.00600	<0.0330	<0.0330	<0.0330	<0.0330	<0.0330	<0.0330	<0.0330	<0.0330	<0.0330	<0.00300	<0.0120
FL06 2FT	05/30/2025	2	<0.0330	<0.0330	<0.00600	<0.0330	<0.0330	<0.0330	<0.0330	<0.0330	<0.0330	<0.0330	<0.0330	<0.0330	<0.00300	<0.0120
FL07 2FT	05/30/2025	2	<0.0330	<0.0330	<0.00600	<0.0330	<0.0330	<0.0330	<0.0330	<0.0330	<0.0330	<0.0330	<0.0330	<0.0330	<0.00300	<0.0120
FL08 2FT	05/30/2025	2	<0.0330	<0.0330	<0.00600	<0.0330	<0.0330	<0.0330	<0.0330	<0.0330	<0.0330	<0.0330	<0.0330	<0.0330	<0.00300	<0.0120
FL09 2FT	05/30/2025	2	<0.0330	<0.0330	<0.00600	<0.0330	<0.0330	<0.0330	<0.0330	<0.0330	<0.0330	<0.0330	<0.0330	<0.0330	<0.00300	<0.0120
FL10 2FT	05/30/2025	2	<0.0330	<0.0330	<0.00600	<0.0330	<0.0330	<0.0330	<0.0330	<0.0330	<0.0330	<0.0330	<0.0330	<0.0330	<0.00300	<0.0120
FL11 2FT	05/30/2025	2	<0.0330	<0.0330	<0.00600	<0.0330	<0.0330	<0.0330	<0.0330	<0.0330	<0.0330	<0.0330	<0.0330	<0.0330	<0.00300	<0.0120
FL12 2FT	05/30/2025	2	<0.0330	<0.0330	<0.00600	<0.0330	<0.0330	<0.0330	<0.0330	<0.0330	<0.0330	<0.0330	<0.0330	<0.0330	<0.00300	<0.0120
SEP01 2FT	05/30/2025	2	<0.0330	<0.0330	<0.00600	<0.0330	<0.0330	<0.0330	<0.0330	<0.0330	<0.0330	<0.0330	<0.0330	<0.0330	<0.00300	<0.0120

- Bold values exceed the ECMC Table 915-1 limit(s)
 - Red & blue highlighted soil analytical values indicate an exceedance of the referenced soil screening level (SSL)
 - * Indicates laboratory minimum detection limit in excess of SSL
 - ** Summation of GRO+DRO+ORO must be less than 500 mg/kg
- (<) = Analytical result is less than the indicated laboratory reporting limit.
 TPH-GRO = Total petroleum hydrocarbons - gasoline range organics
 TPH-DRO = Total petroleum hydrocarbons - diesel range organics
 TPH-ORO = Total petroleum hydrocarbons - oil range organics
 mg/kg = Milligrams per kilogram
 ft. = Feet
 bgs = Below ground surface
 NA - Not analyzed

TABLE 4
SUMMARY OF SOIL SUITABILITY FOR RECLAMATION
NOBLE 100322
SAUER F33-33, WELD COUNTY, COLORADO
REM # 29716

Sample ID	Sample Date	Depth (ft)	pH (Standard Units)	EC (mmhos/cm)	SAR (Standard Units)	Boron (mg/L)
ECMC Table 915-1 Soil Suitability Limits			6 - 8.3	<4	<6	2
WH01 2FT	05/30/2025	2	8.36	0.251	1.24	0.266
FL01 2FT	05/30/2025	2	7.96	0.724	1.51	0.342
FL02 2FT	05/30/2025	2	7.63	0.445	1.7	0.315
FL03 2FT	05/30/2025	2	8.08	0.699	1.5	0.356
FL04 2FT	05/30/2025	2	7.99	0.64	1.17	0.509
FL05 2FT	05/30/2025	2	8.04	0.692	1.39	0.642
FL06 2FT	05/30/2025	2	8.05	0.33	0.368	0.228
FL07 2FT	05/30/2025	2	8.28	0.453	1.21	0.412
FL08 2FT	05/30/2025	2	8.12	0.803	2.74	0.488
FL09 2FT	05/30/2025	2	7.92	0.744	1.59	0.913
FL10 2FT	05/30/2025	2	7.9	1.32	2.94	0.388
FL11 2FT	05/30/2025	2	8.17	0.567	1.77	0.43
FL12 2FT	05/30/2025	2	8.21	0.418	0.857	0.281
SEP01 2FT	05/30/2025	2	8.13	0.301	0.218	0.713
Maximum Background Concentration			NA	NA	NA	NA

1. **Bold** faced values exceed the ECMC Table 915-1 limit(s), but are within background concentrations.

2. **Bold** faced values exceed the ECMC Table 915-1 limit(s) and native background concentrations.

3. Brown highlighted soil analytical values indicate a regulatory exceedance.

NA - Not analyzed/Not applicable

TABLE 5
SUMMARY OF METALS IN SOIL CHEMISTRY DATA
NOBLE 100322
SAUER F33-33, WELD COUNTY, COLORADO
REM # 29716

Sample ID	Sample Date	Depth (ft)	Arsenic (mg/kg)	Barium (mg/kg)	Cadmium (mg/kg)	Chromium (VI) (mg/kg)	Copper (mg/kg)	Lead (mg/kg)	Nickel (mg/kg)	Selenium (mg/kg)	Silver (mg/kg)	Zinc (mg/kg)
ECMC Table 915-1 Limits (Residential SSL)			0.68	15000	71	0.3	3100	400	1500	390	390	23000
ECMC Table 915-1 Limits (Protection of Groundwater SSL)			0.29	82	0.38	0.00067	46	14	26	0.26	0.8	370
WH01 2FT	05/30/2025	2	2.78	74.6	0.532	0.22	<10.0	26.1	<10.0	0.491	<0.500	<50.0
FL01 2FT	05/30/2025	2	2.28	54.6	0.264	0.205	<10.0	<10.0	<10.0	0.426	<0.500	<50.0
FL02 2FT	05/30/2025	2	3.72	108	0.249	0.255	12.3	<10.0	10.1	0.587	<0.500	51.2
FL03 2FT	05/30/2025	2	4.74	128	0.196	<0.200	<10.0	<10.0	<10.0	0.467	<0.500	<50.0
FL04 2FT	05/30/2025	2	3.41	114	0.281	0.21	10.5	10.8	<10.0	0.539	<0.500	<50.0
FL05 2FT	05/30/2025	2	3.15	74	0.304	0.288	11.5	12.8	<10.0	0.594	<0.500	50.9
FL06 2FT	05/30/2025	2	3.15	286	0.159	0.276	10.5	<10.0	<10.0	0.483	<0.500	<50.0
FL07 2FT	05/30/2025	2	1.88	78.3	<0.100	<0.200	<10.0	<10.0	<10.0	0.205	<0.500	<50.0
FL08 2FT	05/30/2025	2	3	99	0.184	0.226	<10.0	<10.0	<10.0	0.449	<0.500	55.1
FL09 2FT	05/30/2025	2	3.46	138	0.202	0.345	10.2	<10.0	10.5	0.241	<0.500	<50.0
FL10 2FT	05/30/2025	2	2.47	80.8	0.285	0.242	10.4	10.9	<10.0	0.511	<0.500	<50.0
FL11 2FT	05/30/2025	2	2.22	50.3	0.166	0.231	<10.0	<10.0	<10.0	0.356	<0.500	<50.0
FL12 2FT	05/30/2025	2	2.37	67.1	0.196	0.34	<10.0	<10.0	<10.0	0.451	<0.500	<50.0
SEP01 2FT	05/30/2025	2	2.54	70.3	0.229	0.283	<10.0	<10.0	<10.0	0.433	<0.500	<50.0
1.25x Maximum Background Concentration			NA	NA	NA	NA	NA	NA	NA	NA	NA	NA

- Bold** faced values exceed the ECMC Table 915-1 limit(s), but are within 1.25x background concentrations.
- Red** faced values exceed the ECMC Table 915-1 limit(s) and native background concentrations.
- Red & blue highlighted soil analytical values indicate an exceedance of the referenced soil screening level (SSL).
- Non-detect background results accounted for in the highest background concentration by using the reporting limit.

ECMC = Energy & Carbon Management Commission

(<) = Analytical result is less than the indicated laboratory reporting limit.

mg/kg = Milligrams per kilogram

ft. = Feet

bgs = Below ground surface

* Indicates laboratory minimum detection limit in excess of SSL

NA - Not analyzed/Not applicable

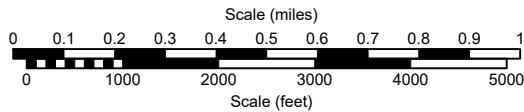
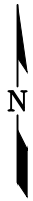
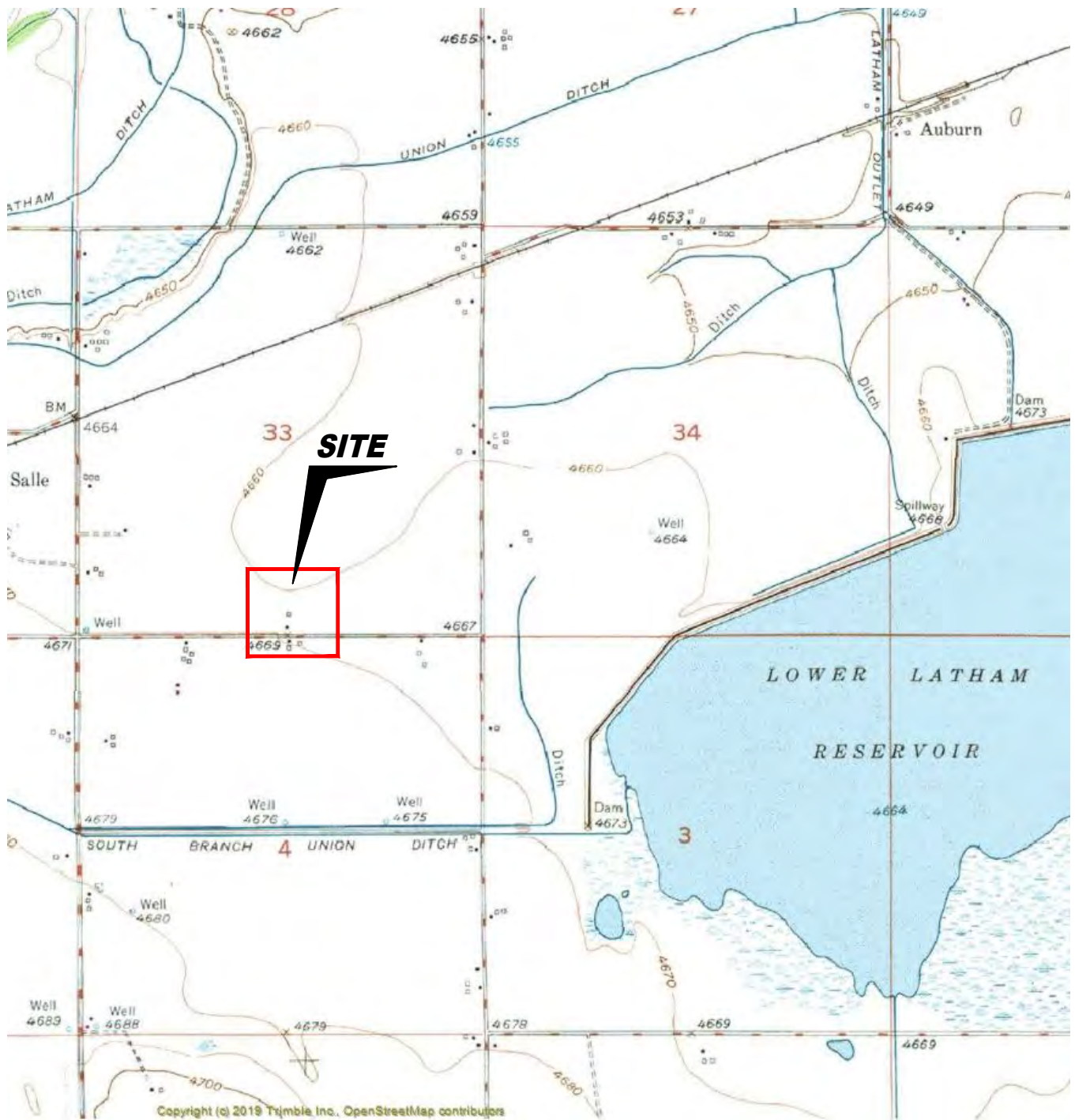
SAUER F33-33

WELD COUNTY, COLORADO
40.352069 -104.677147
REM 29716

Legend

- Impacted Soil Sample Location
- ⊗ AIP Multiphase Flowline
- ⊙ Soil Sample Location





USGS 7.5 MINUTE SERIES (TOPOGRAPHIC)

Figure 1
SITE LOCATION MAP

Noble Energy Inc. ~ Sauer G 04-28D
SESW Sec. 33, T5N, R65W, 6th PM
Weld County, Colorado
40.350586°, -104.672327°

Project # C023-162	API #	Facility # 327497
Date 8/16/24	Remediation # 29142	Filename 23162TTB

