

PDC ENERGY INC

Location: COLORADO Slot: SLOT#03 CAPITOL 03N (282°FSL & 2329°FWL, SEC.36)
 Field: WELD COUNTY (NAD83/GRID) Well: CAPITOL 03N
 Facility: SEC.36-T05N-R66W Wellbore: CAPITOL 03N PWB

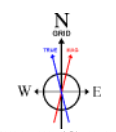
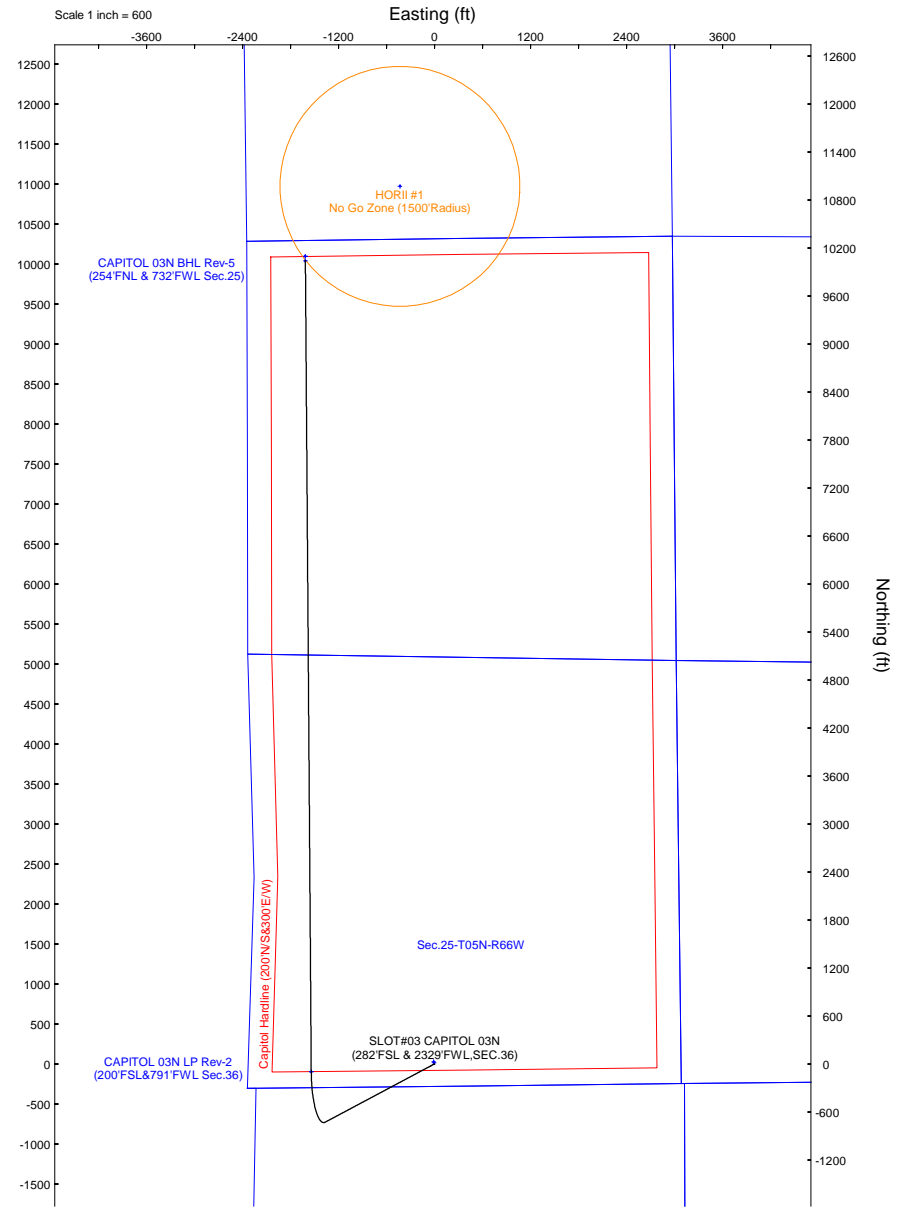
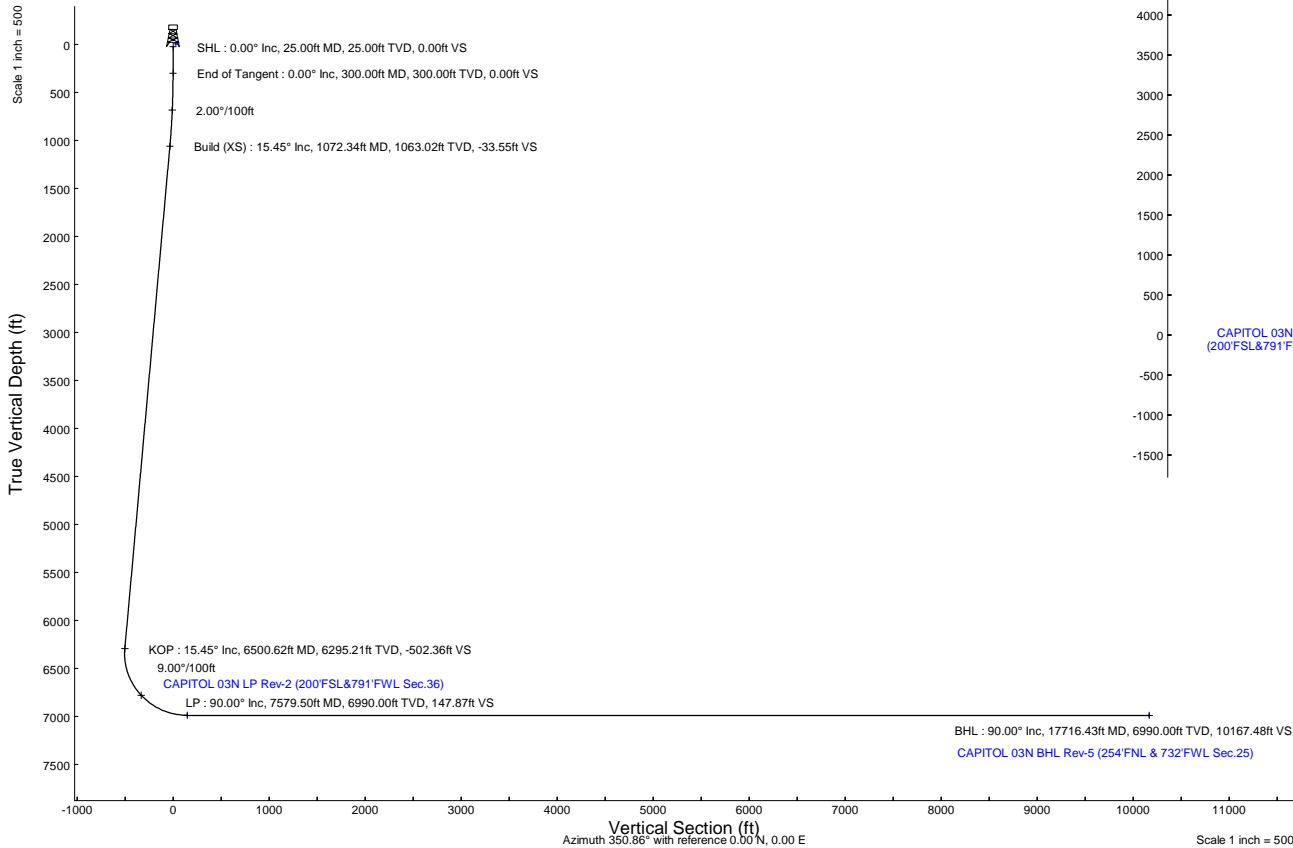
Plot reference wellpath is CAPITOL 03N (REV-E.0) PWP
 True vertical depths are referenced to Rig (4665 GL+25KB = 4690'RKB) (RKB)
 Reference wellpath measured depths are referenced to Rig (4665 GL+25KB = 4690'RKB) (RKB)
 Rig (4665 GL+25KB = 4690'RKB) to Mean Sea Level: 4690 feet
 Mean Sea Level to Ground level (At Slot: SLOT#03 CAPITOL 03N (282°FSL & 2329°FWL, SEC.36)): 0 feet
 Offset wellpath MDs are referenced to each path's default MD datum
 Grid System: NAD83 / Lambert Colorado SP, Northern Zone (501), US feet
 North Reference: Grid north
 Scale: True distance
 Coordinates are in feet referenced to Slot
 Depths are in feet
 Created by: guenaler on 2025-06-20; Database: WA, Denver

Location Information

Facility Name		Grid East (US ft)	Grid North (US ft)	Latitude	Longitude	
SEC.36-T05N-R66W		3215510.944	1371026.935	40°20'57.4472"N	104°43'36.3718"W	
Slot	Local N (ft)	Local E (ft)	Grid East (US ft)	Grid North (US ft)	Latitude	Longitude
SLOT#03 CAPITOL 03N (282°FSL & 2329°FWL, SEC.36)	-27.55	11.72	3215522.667	1370999.380	40°20'57.1740"N	104°43'36.2233"W
Rig (4665 GL+25KB = 4690'RKB) to Ground level (At Slot: SLOT#03 CAPITOL 03N (282°FSL & 2329°FWL, SEC.36))				4690ft		
Mean Sea Level to Ground level (At Slot: SLOT#03 CAPITOL 03N (282°FSL & 2329°FWL, SEC.36))				0ft		
Rig (4665 GL+25KB = 4690'RKB) to Mean Sea Level				4690ft		

Well Profile Data

Design Comment	MD (ft)	Inc (°)	Az (°)	TVD (ft)	Local N (ft)	Local E (ft)	DLS (°/100ft)	VS (ft)
SHL	25.00	0.00	241.940	25.00	0.00	0.00	0.00	0.00
End of Tangent	300.00	0.00	241.940	300.00	0.00	0.00	0.00	0.00
Build (XS)	1072.34	15.447	241.940	1063.02	-48.68	-91.32	2.00	-33.55
KOP	6500.62	15.447	241.940	6295.21	-728.78	-1367.16	0.00	-502.36
LP	7579.50	90.000	359.586	6990.00	-98.28	-1541.79	9.00	147.87
BHL	17716.43	90.000	359.586	6990.00	10038.38	-1615.07	0.00	10167.48



HDGM2024v1.0 (1900.0 to 2025.0) Dip: 66.52° Field: 51611.2 nT
 Magnetic North is 7.67 degrees East of True North (at 8/22/2024)
 Grid North is 0.50 degrees East of True North
 To correct azimuth from True to Grid subtract 0.50 degrees
 To correct azimuth from Magnetic to Grid add 7.17 degrees

Scale 1 inch = 500



Planned Wellpath Report

CAPITOL 03N (REV-E.0) PWP

Page 1 of 10



REFERENCE WELLPATH IDENTIFICATION

Operator	PDC ENERGY INC	Well	CAPITOL 03N
Field	WELD COUNTY (NAD83/GRID)	API/Legal	
Facility	SEC.36-T05N-R66W	Wellbore	CAPITOL 03N PWB
Slot	SLOT#03 CAPITOL 03N (282'FSL & 2329'FWL,SEC.36)		

REPORT SETUP INFORMATION

Projection System	NAD83 / Lambert Colorado SP, Northern Zone (501), US feet	Software System	WellArchitect® 6.0
North Reference	Grid	User	Guenaler
Scale	0.999958	Report Generated	6/20/2025 at 2:52:21 PM
Convergence at slot	0.50° East	Database	WA_Denver

WELLPATH LOCATION

	Local coordinates		Grid coordinates		Geographic coordinates	
	North[ft]	East[ft]	Easting[US ft]	Northing[US ft]	Latitude	Longitude
Slot Location	-27.55	11.72	3215522.67	1370999.39	40.3492150°	-104.7267287°
Facility Reference Pt			3215510.94	1371026.94	40.3492909°	-104.7267699°
Field Reference Pt			3296400.32	1413291.61	40.4630000°	-104.4347500°

WELLPATH DATUM

Calculation method	Minimum curvature	Rig (4665'GL+25'KB = 4690'RKB) (RKB) to Facility Vertical Datum	4690.00ft
Horizontal Reference Pt	Slot	Rig (4665'GL+25'KB = 4690'RKB) (RKB) to Mean Sea Level	4690.00ft
Vertical Reference Pt	Rig (4665'GL+25'KB = 4690'RKB) (RKB)	Rig (4665'GL+25'KB = 4690'RKB) (RKB) to Ground Level at Slot (SLOT#03 CAPITOL 03N (282'FSL & 2329'FWL,SEC.36))	4690.00ft
MD Reference Pt	Rig (4665'GL+25'KB = 4690'RKB) (RKB)	Section Origin	N 0.00, E 0.00 ft
Field Vertical Reference	Mean Sea Level	Section Azimuth	350.86°



Planned Wellpath Report

CAPITOL 03N (REV-E.0) PWP

Page 2 of 10



REFERENCE WELLPATH IDENTIFICATION

Operator	PDC ENERGY INC	Well	CAPITOL 03N
Field	WELD COUNTY (NAD83/GRID)	API/Legal	
Facility	SEC.36-T05N-R66W	Wellbore	CAPITOL 03N PWB
Slot	SLOT#03 CAPITOL 03N (282'FSL & 2329'FWL,SEC.36)		

WELLPATH DATA (195 stations) † = interpolated, ‡ = extrapolated station

MD [ft]	Inclination [°]	Azimuth [°]	TVD [ft]	Vert Sect [ft]	North [ft]	East [ft]	Latitude	Longitude	DLS [°/100ft]	Comments
0.00†	0.000	241.940	0.00	0.00	0.00	0.00	40.3492150	-104.7267287	0.00	
25.00	0.000	241.940	25.00	0.00	0.00	0.00	40.3492150	-104.7267287	0.00	SHL
125.00†	0.000	241.940	125.00	0.00	0.00	0.00	40.3492150	-104.7267287	0.00	
225.00†	0.000	241.940	225.00	0.00	0.00	0.00	40.3492150	-104.7267287	0.00	
300.00	0.000	241.940	300.00	0.00	0.00	0.00	40.3492150	-104.7267287	0.00	End of Tangent
325.00†	0.500	241.940	325.00	-0.04	-0.05	-0.10	40.3492149	-104.7267290	2.00	
425.00†	2.500	241.940	424.96	-0.88	-1.28	-2.41	40.3492115	-104.7267374	2.00	
525.00†	4.500	241.940	524.77	-2.86	-4.15	-7.79	40.3492038	-104.7267568	2.00	
625.00†	6.500	241.940	624.30	-5.97	-8.66	-16.25	40.3491916	-104.7267873	2.00	
725.00†	8.500	241.940	723.44	-10.20	-14.80	-27.77	40.3491750	-104.7268288	2.00	
825.00†	10.500	241.940	822.07	-15.55	-22.57	-42.33	40.3491541	-104.7268813	2.00	
925.00†	12.500	241.940	920.05	-22.02	-31.94	-59.92	40.3491288	-104.7269447	2.00	
1025.00†	14.500	241.940	1017.29	-29.59	-42.92	-80.52	40.3490991	-104.7270189	2.00	
1072.34	15.447	241.940	1063.02	-33.55	-48.68	-91.32	40.3490836	-104.7270578	2.00	Build (XS)
1125.00†	15.447	241.940	1113.78	-38.10	-55.28	-103.69	40.3490658	-104.7271024	0.00	
1225.00†	15.447	241.940	1210.16	-46.74	-67.80	-127.20	40.3490319	-104.7271871	0.00	
1325.00†	15.447	241.940	1306.55	-55.37	-80.33	-150.70	40.3489981	-104.7272719	0.00	
1348.29†	15.447	241.940	1329.00	-57.39	-83.25	-156.18	40.3489902	-104.7272916	0.00	PIERRE_(UPPER)_AQUIFER_BASE
1425.00†	15.447	241.940	1402.94	-64.01	-92.86	-174.21	40.3489643	-104.7273566	0.00	
1525.00†	15.447	241.940	1499.33	-72.65	-105.39	-197.71	40.3489305	-104.7274413	0.00	
1625.00†	15.447	241.940	1595.71	-81.28	-117.92	-221.21	40.3488966	-104.7275260	0.00	
1725.00†	15.447	241.940	1692.10	-89.92	-130.45	-244.72	40.3488628	-104.7276107	0.00	
1825.00†	15.447	241.940	1788.49	-98.56	-142.98	-268.22	40.3488290	-104.7276954	0.00	
1925.00†	15.447	241.940	1884.88	-107.19	-155.51	-291.72	40.3487951	-104.7277801	0.00	
2025.00†	15.447	241.940	1981.27	-115.83	-168.03	-315.23	40.3487613	-104.7278648	0.00	
2125.00†	15.447	241.940	2077.65	-124.47	-180.56	-338.73	40.3487275	-104.7279495	0.00	
2225.00†	15.447	241.940	2174.04	-133.10	-193.09	-362.23	40.3486937	-104.7280343	0.00	
2325.00†	15.447	241.940	2270.43	-141.74	-205.62	-385.74	40.3486598	-104.7281190	0.00	
2343.23†	15.447	241.940	2288.00	-143.31	-207.91	-390.02	40.3486537	-104.7281344	0.00	PIERRE_MBR_A_SD_TOP
2425.00†	15.447	241.940	2366.82	-150.37	-218.15	-409.24	40.3486260	-104.7282037	0.00	



Planned Wellpath Report

CAPITOL 03N (REV-E.0) PWP

Page 3 of 10



REFERENCE WELLPATH IDENTIFICATION

Operator	PDC ENERGY INC	Well	CAPITOL 03N
Field	WELD COUNTY (NAD83/GRID)	API/Legal	
Facility	SEC.36-T05N-R66W	Wellbore	CAPITOL 03N PWB
Slot	SLOT#03 CAPITOL 03N (282'FSL & 2329'FWL,SEC.36)		

WELLPATH DATA (195 stations) † = interpolated, ‡ = extrapolated station

MD [ft]	Inclination [°]	Azimuth [°]	TVD [ft]	Vert Sect [ft]	North [ft]	East [ft]	Latitude	Longitude	DLS [°/100ft]	Comments
2525.00†	15.447	241.940	2463.20	-159.01	-230.68	-432.75	40.3485922	-104.7282884	0.00	
2625.00†	15.447	241.940	2559.59	-167.65	-243.21	-456.25	40.3485583	-104.7283731	0.00	
2725.00†	15.447	241.940	2655.98	-176.28	-255.74	-479.75	40.3485245	-104.7284578	0.00	
2825.00†	15.447	241.940	2752.37	-184.92	-268.27	-503.26	40.3484907	-104.7285425	0.00	
2889.98†	15.447	241.940	2815.00	-190.53	-276.41	-518.53	40.3484687	-104.7285976	0.00	PIERRE_MBR_A_SD_BASE
2925.00†	15.447	241.940	2848.76	-193.56	-280.79	-526.76	40.3484569	-104.7286272	0.00	
3025.00†	15.447	241.940	2945.14	-202.19	-293.32	-550.26	40.3484230	-104.7287119	0.00	
3125.00†	15.447	241.940	3041.53	-210.83	-305.85	-573.77	40.3483892	-104.7287967	0.00	
3225.00†	15.447	241.940	3137.92	-219.46	-318.38	-597.27	40.3483554	-104.7288814	0.00	
3325.00†	15.447	241.940	3234.31	-228.10	-330.91	-620.77	40.3483215	-104.7289661	0.00	
3425.00†	15.447	241.940	3330.70	-236.74	-343.44	-644.28	40.3482877	-104.7290508	0.00	
3525.00†	15.447	241.940	3427.08	-245.37	-355.97	-667.78	40.3482539	-104.7291355	0.00	
3625.00†	15.447	241.940	3523.47	-254.01	-368.50	-691.29	40.3482201	-104.7292202	0.00	
3725.00†	15.447	241.940	3619.86	-262.65	-381.03	-714.79	40.3481862	-104.7293049	0.00	
3735.52†	15.447	241.940	3630.00	-263.55	-382.34	-717.26	40.3481827	-104.7293138	0.00	PARKMAN
3825.00†	15.447	241.940	3716.25	-271.28	-393.55	-738.29	40.3481524	-104.7293896	0.00	
3925.00†	15.447	241.940	3812.63	-279.92	-406.08	-761.80	40.3481186	-104.7294743	0.00	
4025.00†	15.447	241.940	3909.02	-288.55	-418.61	-785.30	40.3480847	-104.7295590	0.00	
4125.00†	15.447	241.940	4005.41	-297.19	-431.14	-808.80	40.3480509	-104.7296438	0.00	
4214.84†	15.447	241.940	4092.00	-304.95	-442.40	-829.92	40.3480205	-104.7297199	0.00	SUSSEX
4225.00†	15.447	241.940	4101.80	-305.83	-443.67	-832.31	40.3480171	-104.7297285	0.00	
4325.00†	15.447	241.940	4198.19	-314.46	-456.20	-855.81	40.3479833	-104.7298132	0.00	
4425.00†	15.447	241.940	4294.57	-323.10	-468.73	-879.31	40.3479494	-104.7298979	0.00	
4525.00†	15.447	241.940	4390.96	-331.74	-481.26	-902.82	40.3479156	-104.7299826	0.00	
4625.00†	15.447	241.940	4487.35	-340.37	-493.78	-926.32	40.3478818	-104.7300673	0.00	
4725.00†	15.447	241.940	4583.74	-349.01	-506.31	-949.83	40.3478479	-104.7301520	0.00	
4825.00†	15.447	241.940	4680.12	-357.65	-518.84	-973.33	40.3478141	-104.7302367	0.00	
4925.00†	15.447	241.940	4776.51	-366.28	-531.37	-996.83	40.3477803	-104.7303214	0.00	
4932.77†	15.447	241.940	4784.00	-366.95	-532.34	-998.66	40.3477777	-104.7303280	0.00	SHANNON
5025.00†	15.447	241.940	4872.90	-374.92	-543.90	-1020.34	40.3477465	-104.7304061	0.00	



Planned Wellpath Report

CAPITOL 03N (REV-E.0) PWP

Page 4 of 10



REFERENCE WELLPATH IDENTIFICATION

Operator	PDC ENERGY INC	Well	CAPITOL 03N
Field	WELD COUNTY (NAD83/GRID)	API/Legal	
Facility	SEC.36-T05N-R66W	Wellbore	CAPITOL 03N PWB
Slot	SLOT#03 CAPITOL 03N (282'FSL & 2329'FWL,SEC.36)		

WELLPATH DATA (195 stations) † = interpolated, ‡ = extrapolated station

MD [ft]	Inclination [°]	Azimuth [°]	TVD [ft]	Vert Sect [ft]	North [ft]	East [ft]	Latitude	Longitude	DLS [°/100ft]	Comments
5125.00†	15.447	241.940	4969.29	-383.55	-556.43	-1043.84	40.3477126	-104.7304908	0.00	
5225.00†	15.447	241.940	5065.68	-392.19	-568.96	-1067.34	40.3476788	-104.7305756	0.00	
5325.00†	15.447	241.940	5162.06	-400.83	-581.49	-1090.85	40.3476450	-104.7306603	0.00	
5425.00†	15.447	241.940	5258.45	-409.46	-594.02	-1114.35	40.3476111	-104.7307450	0.00	
5525.00†	15.447	241.940	5354.84	-418.10	-606.54	-1137.85	40.3475773	-104.7308297	0.00	
5625.00†	15.447	241.940	5451.23	-426.74	-619.07	-1161.36	40.3475435	-104.7309144	0.00	
5725.00†	15.447	241.940	5547.61	-435.37	-631.60	-1184.86	40.3475096	-104.7309991	0.00	
5825.00†	15.447	241.940	5644.00	-444.01	-644.13	-1208.37	40.3474758	-104.7310838	0.00	
5925.00†	15.447	241.940	5740.39	-452.64	-656.66	-1231.87	40.3474420	-104.7311685	0.00	
6025.00†	15.447	241.940	5836.78	-461.28	-669.19	-1255.37	40.3474082	-104.7312532	0.00	
6125.00†	15.447	241.940	5933.17	-469.92	-681.72	-1278.88	40.3473743	-104.7313379	0.00	
6225.00†	15.447	241.940	6029.55	-478.55	-694.25	-1302.38	40.3473405	-104.7314226	0.00	
6256.59†	15.447	241.940	6060.00	-481.28	-698.20	-1309.80	40.3473298	-104.7314494	0.00	TEPEE BUTTES
6325.00†	15.447	241.940	6125.94	-487.19	-706.77	-1325.88	40.3473067	-104.7315073	0.00	
6425.00†	15.447	241.940	6222.33	-495.83	-719.30	-1349.39	40.3472728	-104.7315921	0.00	
6500.62	15.447	241.940	6295.21	-502.36	-728.78	-1367.16	40.3472473	-104.7316561	0.00	KOP
6525.00†	14.587	249.740	6318.77	-504.00	-731.37	-1372.91	40.3472403	-104.7316768	9.00	
6625.00†	14.340	286.345	6415.80	-501.10	-732.25	-1396.65	40.3472384	-104.7317620	9.00	
6725.00†	18.904	313.960	6511.74	-482.78	-717.49	-1420.24	40.3472795	-104.7318462	9.00	
6825.00†	25.843	329.230	6604.23	-449.49	-687.45	-1443.10	40.3473625	-104.7319273	9.00	
6925.00†	33.721	338.071	6691.00	-402.07	-642.88	-1464.66	40.3474853	-104.7320032	9.00	
7025.00†	42.009	343.816	6769.90	-341.66	-584.88	-1484.40	40.3476450	-104.7320722	9.00	
7078.21†	46.511	346.159	6808.00	-304.73	-549.02	-1493.98	40.3477437	-104.7321055	9.00	SHARON SPRINGS
7125.00†	50.504	347.946	6839.00	-269.77	-514.87	-1501.82	40.3478376	-104.7321325	9.00	
7131.33†	51.046	348.172	6843.00	-264.87	-510.07	-1502.83	40.3478508	-104.7321360	9.00	NIO_A_CHALK
7167.56†	54.157	349.401	6865.00	-236.12	-481.84	-1508.42	40.3479284	-104.7321552	9.00	NIO_A_MARL
7225.00†	59.113	351.166	6896.58	-188.16	-434.57	-1516.49	40.3480584	-104.7321827	9.00	
7325.00†	67.788	353.849	6941.24	-98.84	-345.96	-1528.07	40.3483018	-104.7322215	9.00	
7383.75†	72.904	355.268	6961.00	-43.65	-290.90	-1533.30	40.3484531	-104.7322385	9.00	NIO_B_CHALK
7425.00†	76.502	356.217	6971.88	-4.01	-251.23	-1536.25	40.3485621	-104.7322479	9.00	



Planned Wellpath Report

CAPITOL 03N (REV-E.0) PWP

Page 5 of 10



REFERENCE WELLPATH IDENTIFICATION

Operator	PDC ENERGY INC	Well	CAPITOL 03N
Field	WELD COUNTY (NAD83/GRID)	API/Legal	
Facility	SEC.36-T05N-R66W	Wellbore	CAPITOL 03N PWB
Slot	SLOT#03 CAPITOL 03N (282'FSL & 2329'FWL,SEC.36)		

WELLPATH DATA (195 stations) † = interpolated, ‡ = extrapolated station

MD [ft]	Inclination [°]	Azimuth [°]	TVD [ft]	Vert Sect [ft]	North [ft]	East [ft]	Latitude	Longitude	DLS [°/100ft]	Comments
7498.48†	82.919	357.843	6985.00	67.83	-179.07	-1539.98	40.3487602	-104.7322590	9.00	NIO_B_MARL
7525.00†	85.236	358.417	6987.74	93.99	-152.71	-1540.84	40.3488326	-104.7322613	9.00	
7579.50	90.000	359.586	6990.00†	147.87	-98.28	-1541.79	40.3489820	-104.7322630	9.00	LP
7625.00†	90.000	359.586	6990.00	192.85	-52.78	-1542.12	40.3491069	-104.7322628	0.00	
7725.00†	90.000	359.586	6990.00	291.69	47.22	-1542.84	40.3493814	-104.7322623	0.00	
7825.00†	90.000	359.586	6990.00	390.53	147.21	-1543.56	40.3496559	-104.7322617	0.00	
7925.00†	90.000	359.586	6990.00	489.38	247.21	-1544.29	40.3499304	-104.7322612	0.00	
8025.00†	90.000	359.586	6990.00	588.22	347.21	-1545.01	40.3502049	-104.7322607	0.00	
8125.00†	90.000	359.586	6990.00	687.06	447.21	-1545.73	40.3504794	-104.7322602	0.00	
8225.00†	90.000	359.586	6990.00	785.90	547.20	-1546.46	40.3507539	-104.7322597	0.00	
8325.00†	90.000	359.586	6990.00	884.75	647.20	-1547.18	40.3510283	-104.7322592	0.00	
8425.00†	90.000	359.586	6990.00	983.59	747.20	-1547.90	40.3513028	-104.7322587	0.00	
8525.00†	90.000	359.586	6990.00	1082.43	847.19	-1548.62	40.3515773	-104.7322582	0.00	
8625.00†	90.000	359.586	6990.00	1181.27	947.19	-1549.35	40.3518518	-104.7322576	0.00	
8725.00†	90.000	359.586	6990.00	1280.12	1047.19	-1550.07	40.3521263	-104.7322571	0.00	
8825.00†	90.000	359.586	6990.00	1378.96	1147.19	-1550.79	40.3524008	-104.7322566	0.00	
8925.00†	90.000	359.586	6990.00	1477.80	1247.18	-1551.52	40.3526753	-104.7322561	0.00	
9025.00†	90.000	359.586	6990.00	1576.64	1347.18	-1552.24	40.3529498	-104.7322556	0.00	
9125.00†	90.000	359.586	6990.00	1675.49	1447.18	-1552.96	40.3532243	-104.7322551	0.00	
9225.00†	90.000	359.586	6990.00	1774.33	1547.18	-1553.68	40.3534988	-104.7322546	0.00	
9325.00†	90.000	359.586	6990.00	1873.17	1647.17	-1554.41	40.3537733	-104.7322540	0.00	
9425.00†	90.000	359.586	6990.00	1972.01	1747.17	-1555.13	40.3540478	-104.7322535	0.00	
9525.00†	90.000	359.586	6990.00	2070.86	1847.17	-1555.85	40.3543223	-104.7322530	0.00	
9625.00†	90.000	359.586	6990.00	2169.70	1947.17	-1556.58	40.3545967	-104.7322525	0.00	
9725.00†	90.000	359.586	6990.00	2268.54	2047.16	-1557.30	40.3548712	-104.7322520	0.00	
9825.00†	90.000	359.586	6990.00	2367.39	2147.16	-1558.02	40.3551457	-104.7322515	0.00	
9925.00†	90.000	359.586	6990.00	2466.23	2247.16	-1558.74	40.3554202	-104.7322510	0.00	
10025.00†	90.000	359.586	6990.00	2565.07	2347.16	-1559.47	40.3556947	-104.7322505	0.00	
10125.00†	90.000	359.586	6990.00	2663.91	2447.15	-1560.19	40.3559692	-104.7322499	0.00	
10225.00†	90.000	359.586	6990.00	2762.76	2547.15	-1560.91	40.3562437	-104.7322494	0.00	



Planned Wellpath Report

CAPITOL 03N (REV-E.0) PWP

Page 6 of 10



REFERENCE WELLPATH IDENTIFICATION

Operator	PDC ENERGY INC	Well	CAPITOL 03N
Field	WELD COUNTY (NAD83/GRID)	API/Legal	
Facility	SEC.36-T05N-R66W	Wellbore	CAPITOL 03N PWB
Slot	SLOT#03 CAPITOL 03N (282'FSL & 2329'FWL,SEC.36)		

WELLPATH DATA (195 stations) † = interpolated, ‡ = extrapolated station

MD [ft]	Inclination [°]	Azimuth [°]	TVD [ft]	Vert Sect [ft]	North [ft]	East [ft]	Latitude	Longitude	DLS [°/100ft]	Comments
10325.00†	90.000	359.586	6990.00	2861.60	2647.15	-1561.64	40.3565182	-104.7322489	0.00	
10425.00†	90.000	359.586	6990.00	2960.44	2747.15	-1562.36	40.3567927	-104.7322484	0.00	
10525.00†	90.000	359.586	6990.00	3059.28	2847.14	-1563.08	40.3570672	-104.7322479	0.00	
10625.00†	90.000	359.586	6990.00	3158.13	2947.14	-1563.80	40.3573417	-104.7322474	0.00	
10725.00†	90.000	359.586	6990.00	3256.97	3047.14	-1564.53	40.3576162	-104.7322469	0.00	
10825.00†	90.000	359.586	6990.00	3355.81	3147.13	-1565.25	40.3578906	-104.7322464	0.00	
10925.00†	90.000	359.586	6990.00	3454.65	3247.13	-1565.97	40.3581651	-104.7322458	0.00	
11025.00†	90.000	359.586	6990.00	3553.50	3347.13	-1566.70	40.3584396	-104.7322453	0.00	
11125.00†	90.000	359.586	6990.00	3652.34	3447.13	-1567.42	40.3587141	-104.7322448	0.00	
11225.00†	90.000	359.586	6990.00	3751.18	3547.12	-1568.14	40.3589886	-104.7322443	0.00	
11325.00†	90.000	359.586	6990.00	3850.02	3647.12	-1568.86	40.3592631	-104.7322438	0.00	
11425.00†	90.000	359.586	6990.00	3948.87	3747.12	-1569.59	40.3595376	-104.7322433	0.00	
11525.00†	90.000	359.586	6990.00	4047.71	3847.12	-1570.31	40.3598121	-104.7322428	0.00	
11625.00†	90.000	359.586	6990.00	4146.55	3947.11	-1571.03	40.3600866	-104.7322423	0.00	
11725.00†	90.000	359.586	6990.00	4245.39	4047.11	-1571.76	40.3603611	-104.7322417	0.00	
11825.00†	90.000	359.586	6990.00	4344.24	4147.11	-1572.48	40.3606356	-104.7322412	0.00	
11925.00†	90.000	359.586	6990.00	4443.08	4247.11	-1573.20	40.3609100	-104.7322407	0.00	
12025.00†	90.000	359.586	6990.00	4541.92	4347.10	-1573.93	40.3611845	-104.7322402	0.00	
12125.00†	90.000	359.586	6990.00	4640.76	4447.10	-1574.65	40.3614590	-104.7322397	0.00	
12225.00†	90.000	359.586	6990.00	4739.61	4547.10	-1575.37	40.3617335	-104.7322392	0.00	
12325.00†	90.000	359.586	6990.00	4838.45	4647.10	-1576.09	40.3620080	-104.7322387	0.00	
12425.00†	90.000	359.586	6990.00	4937.29	4747.09	-1576.82	40.3622825	-104.7322381	0.00	
12525.00†	90.000	359.586	6990.00	5036.13	4847.09	-1577.54	40.3625570	-104.7322376	0.00	
12625.00†	90.000	359.586	6990.00	5134.98	4947.09	-1578.26	40.3628315	-104.7322371	0.00	
12725.00†	90.000	359.586	6990.00	5233.82	5047.09	-1578.99	40.3631060	-104.7322366	0.00	
12825.00†	90.000	359.586	6990.00	5332.66	5147.08	-1579.71	40.3633805	-104.7322361	0.00	
12925.00†	90.000	359.586	6990.00	5431.51	5247.08	-1580.43	40.3636550	-104.7322356	0.00	
13025.00†	90.000	359.586	6990.00	5530.35	5347.08	-1581.15	40.3639295	-104.7322351	0.00	
13125.00†	90.000	359.586	6990.00	5629.19	5447.07	-1581.88	40.3642039	-104.7322346	0.00	
13225.00†	90.000	359.586	6990.00	5728.03	5547.07	-1582.60	40.3644784	-104.7322340	0.00	



Planned Wellpath Report

CAPITOL 03N (REV-E.0) PWP

Page 7 of 10



REFERENCE WELLPATH IDENTIFICATION

Operator	PDC ENERGY INC	Well	CAPITOL 03N
Field	WELD COUNTY (NAD83/GRID)	API/Legal	
Facility	SEC.36-T05N-R66W	Wellbore	CAPITOL 03N PWB
Slot	SLOT#03 CAPITOL 03N (282'FSL & 2329'FWL,SEC.36)		

WELLPATH DATA (195 stations) † = interpolated, ‡ = extrapolated station

MD [ft]	Inclination [°]	Azimuth [°]	TVD [ft]	Vert Sect [ft]	North [ft]	East [ft]	Latitude	Longitude	DLS [°/100ft]	Comments
13325.00†	90.000	359.586	6990.00	5826.88	5647.07	-1583.32	40.3647529	-104.7322335	0.00	
13425.00†	90.000	359.586	6990.00	5925.72	5747.07	-1584.05	40.3650274	-104.7322330	0.00	
13525.00†	90.000	359.586	6990.00	6024.56	5847.06	-1584.77	40.3653019	-104.7322325	0.00	
13625.00†	90.000	359.586	6990.00	6123.40	5947.06	-1585.49	40.3655764	-104.7322320	0.00	
13725.00†	90.000	359.586	6990.00	6222.25	6047.06	-1586.21	40.3658509	-104.7322315	0.00	
13825.00†	90.000	359.586	6990.00	6321.09	6147.06	-1586.94	40.3661254	-104.7322310	0.00	
13925.00†	90.000	359.586	6990.00	6419.93	6247.05	-1587.66	40.3663999	-104.7322305	0.00	
14025.00†	90.000	359.586	6990.00	6518.77	6347.05	-1588.38	40.3666744	-104.7322299	0.00	
14125.00†	90.000	359.586	6990.00	6617.62	6447.05	-1589.11	40.3669489	-104.7322294	0.00	
14225.00†	90.000	359.586	6990.00	6716.46	6547.05	-1589.83	40.3672233	-104.7322289	0.00	
14325.00†	90.000	359.586	6990.00	6815.30	6647.04	-1590.55	40.3674978	-104.7322284	0.00	
14425.00†	90.000	359.586	6990.00	6914.14	6747.04	-1591.27	40.3677723	-104.7322279	0.00	
14525.00†	90.000	359.586	6990.00	7012.99	6847.04	-1592.00	40.3680468	-104.7322274	0.00	
14625.00†	90.000	359.586	6990.00	7111.83	6947.04	-1592.72	40.3683213	-104.7322269	0.00	
14725.00†	90.000	359.586	6990.00	7210.67	7047.03	-1593.44	40.3685958	-104.7322263	0.00	
14825.00†	90.000	359.586	6990.00	7309.51	7147.03	-1594.17	40.3688703	-104.7322258	0.00	
14925.00†	90.000	359.586	6990.00	7408.36	7247.03	-1594.89	40.3691448	-104.7322253	0.00	
15025.00†	90.000	359.586	6990.00	7507.20	7347.03	-1595.61	40.3694193	-104.7322248	0.00	
15125.00†	90.000	359.586	6990.00	7606.04	7447.02	-1596.33	40.3696938	-104.7322243	0.00	
15225.00†	90.000	359.586	6990.00	7704.88	7547.02	-1597.06	40.3699683	-104.7322238	0.00	
15325.00†	90.000	359.586	6990.00	7803.73	7647.02	-1597.78	40.3702427	-104.7322233	0.00	
15425.00†	90.000	359.586	6990.00	7902.57	7747.01	-1598.50	40.3705172	-104.7322228	0.00	
15525.00†	90.000	359.586	6990.00	8001.41	7847.01	-1599.23	40.3707917	-104.7322222	0.00	
15625.00†	90.000	359.586	6990.00	8100.25	7947.01	-1599.95	40.3710662	-104.7322217	0.00	
15725.00†	90.000	359.586	6990.00	8199.10	8047.01	-1600.67	40.3713407	-104.7322212	0.00	
15825.00†	90.000	359.586	6990.00	8297.94	8147.00	-1601.39	40.3716152	-104.7322207	0.00	
15925.00†	90.000	359.586	6990.00	8396.78	8247.00	-1602.12	40.3718897	-104.7322202	0.00	
16025.00†	90.000	359.586	6990.00	8495.62	8347.00	-1602.84	40.3721642	-104.7322197	0.00	
16125.00†	90.000	359.586	6990.00	8594.47	8447.00	-1603.56	40.3724387	-104.7322192	0.00	
16225.00†	90.000	359.586	6990.00	8693.31	8546.99	-1604.29	40.3727132	-104.7322187	0.00	



Planned Wellpath Report

CAPITOL 03N (REV-E.0) PWP

Page 8 of 10



REFERENCE WELLPATH IDENTIFICATION

Operator	PDC ENERGY INC	Well	CAPITOL 03N
Field	WELD COUNTY (NAD83/GRID)	API/Legal	
Facility	SEC.36-T05N-R66W	Wellbore	CAPITOL 03N PWB
Slot	SLOT#03 CAPITOL 03N (282'FSL & 2329'FWL,SEC.36)		

WELLPATH DATA (195 stations) † = interpolated, ‡ = extrapolated station

MD [ft]	Inclination [°]	Azimuth [°]	TVD [ft]	Vert Sect [ft]	North [ft]	East [ft]	Latitude	Longitude	DLS [°/100ft]	Comments
16325.00†	90.000	359.586	6990.00	8792.15	8646.99	-1605.01	40.3729877	-104.7322181	0.00	
16425.00†	90.000	359.586	6990.00	8891.00	8746.99	-1605.73	40.3732621	-104.7322176	0.00	
16525.00†	90.000	359.586	6990.00	8989.84	8846.99	-1606.45	40.3735366	-104.7322171	0.00	
16625.00†	90.000	359.586	6990.00	9088.68	8946.98	-1607.18	40.3738111	-104.7322166	0.00	
16725.00†	90.000	359.586	6990.00	9187.52	9046.98	-1607.90	40.3740856	-104.7322161	0.00	
16825.00†	90.000	359.586	6990.00	9286.37	9146.98	-1608.62	40.3743601	-104.7322156	0.00	
16925.00†	90.000	359.586	6990.00	9385.21	9246.98	-1609.35	40.3746346	-104.7322151	0.00	
17025.00†	90.000	359.586	6990.00	9484.05	9346.97	-1610.07	40.3749091	-104.7322145	0.00	
17125.00†	90.000	359.586	6990.00	9582.89	9446.97	-1610.79	40.3751836	-104.7322140	0.00	
17225.00†	90.000	359.586	6990.00	9681.74	9546.97	-1611.51	40.3754581	-104.7322135	0.00	
17325.00†	90.000	359.586	6990.00	9780.58	9646.97	-1612.24	40.3757326	-104.7322130	0.00	
17425.00†	90.000	359.586	6990.00	9879.42	9746.96	-1612.96	40.3760071	-104.7322125	0.00	
17525.00†	90.000	359.586	6990.00	9978.26	9846.96	-1613.68	40.3762815	-104.7322120	0.00	
17625.00†	90.000	359.586	6990.00	10077.11	9946.96	-1614.41	40.3765560	-104.7322115	0.00	
17716.43	90.000	359.586	6990.00‡	10167.48	10038.38	-1615.07	40.3768070	-104.7322110	0.00	BHL

TARGETS

Name	MD [ft]	TVD [ft]	North [ft]	East [ft]	Grid East [US ft]	Grid North [US ft]	Latitude	Longitude	Shape
Sec.01-T04N-R66W	N/A	-37.00	-3805.11	2527.70	3218050.25	1367194.45	40.3387098	-104.7177809	polygon
	2D Polygon: dimensions not calculated								
Sec.06-T04N-R65W	N/A	-37.00	-3805.11	2527.70	3218050.25	1367194.45	40.3387098	-104.7177809	polygon
	2D Polygon: dimensions not calculated								
Sec.25-T05N-R66W	N/A	-37.00	-3805.11	2527.70	3218050.25	1367194.45	40.3387098	-104.7177809	polygon
	2D Polygon: dimensions not calculated								
Sec.30-T05N-R65W	N/A	-37.00	-3805.11	2527.70	3218050.25	1367194.45	40.3387098	-104.7177809	polygon
	2D Polygon: dimensions not calculated								
Sec.31-T05N-R65W	N/A	-37.00	-3805.11	2527.70	3218050.25	1367194.45	40.3387098	-104.7177809	polygon

TARGETS									
Name	MD [ft]	TVD [ft]	North [ft]	East [ft]	Grid East [US ft]	Grid North [US ft]	Latitude	Longitude	Shape
	2D Polygon: dimensions not calculated								
Sec.36-T05N-R66W	N/A	-37.00	-3805.11	2527.70	3218050.25	1367194.45	40.3387098	-104.7177809	polygon
	2D Polygon: dimensions not calculated								
Sec.24-T05N-R66W	N/A	-5.00	27.55	-11.72	3215510.94	1371026.94	40.3492909	-104.7267699	polygon
	2D Polygon: dimensions not calculated								
CAPITOL 03N BHL (150'FNL & 762'FWL,SEC.24)	N/A	6933.00	15436.25	-1654.00	3213868.73	1386434.97	40.3916240	-104.7321830	point

TARGETS									
Name	MD [ft]	TVD [ft]	North [ft]	East [ft]	Grid East [US ft]	Grid North [US ft]	Latitude	Longitude	Shape
CAPITOL 03N BHL Rev-2 (200'FNL & 762'FWL,SEC.25)	N/A	6933.00	10094.12	-1615.27	3213907.47	1381093.07	40.3769600	-104.7322100	point
CAPITOL 03N BPZ 200'FNL&762'FWLSEC.24	N/A	6933.00	15386.20	-1653.68	3213869.06	1386384.92	40.3914866	-104.7321834	point
CAPITOL 03N LP (200'FSL & 791'FWL,SEC.36)	N/A	6966.00	-98.28	-1541.79	3213980.94	1370901.11	40.3489820	-104.7322630	point
CAPITOL 03N BHL Rev-3 (200'FNL & 762'FWL,SEC.25)	N/A	6990.00	10094.12	-1615.27	3213907.47	1381093.07	40.3769600	-104.7322100	point
CAPITOL 03N BHL Rev-4 (247'FNL & 732'FWL Sec.25)	N/A	6990.00	10045.74	-1614.92	3213907.82	1381044.69	40.3768272	-104.7322102	point
2) CAPITOL 03N BHL Rev-5 (254'FNL & 732'FWL Sec.25)	17716.43	6990.00	10038.38	-1615.07	3213907.67	1381037.34	40.3768070	-104.7322110	point
1) CAPITOL 03N LP Rev-2 (200'FSL&791'FWL Sec.36)	7579.50	6990.00	-98.28	-1541.79	3213980.94	1370901.11	40.3489820	-104.7322630	point
HORII #1 No Go Zone (1500'Radius)	N/A	7100.00	10969.66	-433.16	3215089.53	1381968.57	40.3793350	-104.7279400	circle
	2D Circle radius 1500.								

TARGETS									
Name	MD [ft]	TVD [ft]	North [ft]	East [ft]	Grid East [US ft]	Grid North [US ft]	Latitude	Longitude	Shape
Capitol Hardline (200'N/S&300'E/W)	N/A	7200.00	13.79	-5.83	3215516.83	1371013.18	40.3492530	-104.7267492	polygon
	2D Polygon: dimensions not calculated								



Planned Wellpath Report

CAPITOL 03N (REV-E.0) PWP

Page 9 of 10



REFERENCE WELLPATH IDENTIFICATION

Operator	PDC ENERGY INC	Well	CAPITOL 03N
Field	WELD COUNTY (NAD83/GRID)	API/Legal	
Facility	SEC.36-T05N-R66W	Wellbore	CAPITOL 03N PWB
Slot	SLOT#03 CAPITOL 03N (282'FSL & 2329'FWL,SEC.36)		

SURVEY PROGRAM - Ref Wellbore: CAPITOL 03N PWB Ref Wellpath: CAPITOL 03N (REV-E.0) PWP

Start MD [ft]	End MD [ft]	Positional Uncertainty Model	Log Name/Comment	Wellbore
25.00	1995.00	OWSG MWD rev2 - Standard		CAPITOL 03N PWB
1995.00	23092.65	OWSG MWD rev2 (MS+IFR1)		CAPITOL 03N PWB



Planned Wellpath Report

CAPITOL 03N (REV-E.0) PWP

Page 10 of 10



REFERENCE WELLPATH IDENTIFICATION

Operator	PDC ENERGY INC	Well	CAPITOL 03N
Field	WELD COUNTY (NAD83/GRID)	API/Legal	
Facility	SEC.36-T05N-R66W	Wellbore	CAPITOL 03N PWB
Slot	SLOT#03 CAPITOL 03N (282'FSL & 2329'FWL,SEC.36)		

WELLPATH COMMENTS

MD [ft]	Inclination [°]	Azimuth [°]	TVD [ft]	Comment
1348.29	15.447	241.940	1329.00	PIERRE_(UPPER)_AQUIFER_BASE
2343.23	15.447	241.940	2288.00	PIERRE_MBR_A_SD_TOP
2889.98	15.447	241.940	2815.00	PIERRE_MBR_A_SD_BASE
3735.52	15.447	241.940	3630.00	PARKMAN
4214.84	15.447	241.940	4092.00	SUSSEX
4932.77	15.447	241.940	4784.00	SHANNON
6256.59	15.447	241.940	6060.00	TEPEE_BUTTES
7078.21	46.511	346.159	6808.00	SHARON SPRINGS
7131.33	51.046	348.172	6843.00	NIO_A_CHALK
7167.56	54.157	349.401	6865.00	NIO_A_MARL
7383.75	72.904	355.268	6961.00	NIO_B_CHALK
7498.48	82.919	357.843	6985.00	NIO_B_MARL

DESIGN COMMENTS

MD [ft]	Inclination [°]	Azimuth [°]	TVD [ft]	Comment
25.00	0.000	241.940	25.00	SHL
300.00	0.000	241.940	300.00	End of Tangent
1072.34	15.447	241.940	1063.02	Build (XS)
6500.62	15.447	241.940	6295.21	KOP
7579.50	90.000	359.586	6990.00	LP
17716.43	90.000	359.586	6990.00	BHL



Closest Approach Clearance Summary Report

CAPITOL 03N (REV-E.0) PWP - SPE WPTS Stop Drilling HSE Risk (2017)
Page 1 of 9



REFERENCE WELLPATH IDENTIFICATION

Operator	PDC ENERGY INC	Well	CAPITOL 03N
Field	WELD COUNTY (NAD83/GRID)	API/Legal	
Facility	SEC.36-T05N-R66W	Wellbore	CAPITOL 03N PWB
Slot	SLOT#03 CAPITOL 03N (282'FSL & 2329'FWL,SEC.36)		

REPORT SETUP INFORMATION

Projection System	NAD83 / Lambert Colorado SP, Northern Zone (501), US feet	Software System	WellArchitect® 6.0
North Reference	Grid	User	Guenaler
Scale	0.999958	Report Generated	6/20/2025 at 3:06:01 PM
Convergence at slot	0.50° East	Database	WA_Denver

WELLPATH LOCATION

	Local coordinates		Grid coordinates		Geographic coordinates	
	North[ft]	East[ft]	Easting[US ft]	Northing[US ft]	Latitude	Longitude
Slot Location	-27.55	11.72	3215522.67	1370999.39	40.3492150°	-104.7267287°
Facility Reference Pt			3215510.94	1371026.94	40.3492909°	-104.7267699°
Field Reference Pt			3296400.32	1413291.61	40.4630000°	-104.4347500°

WELLPATH DATUM

Calculation method	Minimum Curvature	Rig (4665'GL+25'KB = 4690'RKB) (RKB) to Facility Vertical Datum	4690.00ft
Horizontal Reference Pt	Slot	Rig (4665'GL+25'KB = 4690'RKB) (RKB) to Mean Sea Level	4690.00ft
Vertical Reference Pt	Rig (4665'GL+25'KB = 4690'RKB) (RKB)	Rig (4665'GL+25'KB = 4690'RKB) (RKB) to Ground Level at Slot (SLOT#03 CAPITOL 03N (282'FSL & 2329'FWL,SEC.36))	4690.00ft
MD Reference Pt	Rig (4665'GL+25'KB = 4690'RKB) (RKB)		
Field Vertical Reference	Mean Sea Level		

POSITIONAL UNCERTAINTY CALCULATION SETTINGS

Ellipse Confidence Limit	3.50 Std Dev	Ellipse Start MD	25.00ft	Surface Position Uncertainty	included
Declination	7.67° East of TN	Dip Angle	66.52°	Mag Field Strength	51611 nT

POSITIONAL UNCERTAINTY CALCULATION SETTINGS

Slot Surface Uncertainty @1SD	Horizontal	0.100ft	Vertical	1.000ft
Facility Surface Uncertainty @1SD	Horizontal	8.200ft	Vertical	3.000ft

Positional Uncertainty values in the WELLPATH DATA table are the projection of the ellipsoid of uncertainty onto the vertical and horizontal planes



Closest Approach Clearance Summary Report

CAPITOL 03N (REV-E.0) PWP - SPE WPTS Stop Drilling HSE Risk (2017)
Page 2 of 9



REFERENCE WELLPATH IDENTIFICATION			
Operator	PDC ENERGY INC	Well	CAPITOL 03N
Field	WELD COUNTY (NAD83/GRID)	API/Legal	
Facility	SEC.36-T05N-R66W	Wellbore	CAPITOL 03N PWB
Slot	SLOT#03 CAPITOL 03N (282'FSL & 2329'FWL,SEC.36)		

PROXIMITY-SCAN RULE			
Rule Name	SPE WPTS Stop Drilling HSE Risk (2017)	Rule Based On	Ratio
Plane of Rule	Closest Approach	Threshold Value	1.00
Include Casing & Hole Size	yes	Apply Cone of Safety	no

SURVEY PROGRAM - Ref Wellbore: CAPITOL 03N PWB Ref Wellpath: CAPITOL 03N (REV-E.0) PWP				
Start MD [ft]	End MD [ft]	Positional Uncertainty Model	Log Name/Comment	Wellbore
25.00	1995.00	OWSG MWD rev2 - Standard		CAPITOL 03N PWB
1995.00	23092.65	OWSG MWD rev2 (MS+IFR1)		CAPITOL 03N PWB



Closest Approach Clearance Summary Report

CAPITOL 03N (REV-E.0) PWP - SPE WPTS Stop Drilling HSE Risk (2017)

Page 3 of 9



REFERENCE WELLPATH IDENTIFICATION			
Operator	PDC ENERGY INC	Well	CAPITOL 03N
Field	WELD COUNTY (NAD83/GRID)	API/Legal	
Facility	SEC.36-T05N-R66W	Wellbore	CAPITOL 03N PWB
Slot	SLOT#03 CAPITOL 03N (282'FSL & 2329'FWL,SEC.36)		

CALCULATION RANGE & CUTOFF		
From: 25.00ft MD	To: 17716.43ft MD	C-C Cutoff: (none)

OFFSET WELL CLEARANCE SUMMARY (171 Offset Wellpaths selected) Ratios are calculated in Closest Approach plane													
Offset Facility	Offset Slot	Offset Well	Offset Wellbore	Offset Wellpath	Wellbore Status	C-C Clearance Distance			Rule Separation Ratio				
						Ref MD [ft]	Min C-C Clear Dist [ft]	Diverging from MD [ft]	Ref MD of Min Ratio [ft]	Min Ratio	Min Ratio Dvrg from [ft]	Rule Status	
Blackburn Offsets	(ANDERSON COOMBS 6) (05-123-12852)	ANDERSON COOMBS 6	ANDERSON COOMBS 6	OWB\OWB	Abandoned	17335.20	105.61	17335.20	17335.20	0.01	17335.20	FAIL	
Blackburn Offsets	(PEPLER 3-36) (05-123-13289)	PEPLER 3-36	PEPLER 3-36	OWB\OWB	Suspended	10358.09	245.61	10358.09	10358.09	0.03	10358.09	FAIL	
Blackburn Offsets	(HILL STATE 18-36) (05-123-22263)	HILL STATE 18-36	HILL STATE 18-36	OWB\OWB	Abandoned	11343.12	722.84	11343.12	11343.12	0.08	11343.12	FAIL	
Blackburn Offsets	(STATE-ELK 1) (05-123-12916)	STATE-ELK 1	STATE-ELK 1	OWB\OWB	Abandoned	10870.08	1105.34	10870.08	10870.08	0.13	10870.08	FAIL	
Blackburn Offsets	(ANDERSON-COOMBS 1) (05-123-11649)	ANDERSON-COOMBS 1	ANDERSON-COOMBS 1	OWB\OWB	Abandoned	14742.87	1219.45	14742.87	14742.87	0.14	14742.87	FAIL	
Blackburn Offsets	(CURTIS UNIT 1) (05-123-11914)	CURTIS UNIT 1	CURTIS UNIT 1	OWB\OWB	Abandoned	13300.41	2561.98	13300.41	13300.48	0.30	13300.48	FAIL	
Blackburn Offsets	(ISHIGURO 5) (05-123-12892)	ISHIGURO 5	ISHIGURO 5	OWB\OWB	Abandoned	10890.77	2744.04	10890.77	10890.82	0.32	10890.82	FAIL	
Blackburn Offsets	(REEVE, FREEDA 2-1) (05-123-14918)	REEVE, FREEDA 2-1	REEVE, FREEDA 2-1	OWB\OWB	Abandoned	25.00	1564.37	300.00	7127.19	0.34	7127.19	FAIL	
Blackburn Offsets	(GEMINI K 1-14) (05-123-13870)	GEMINI K 1-14	GEMINI K 1-14	OWB\OWB	Abandoned	6525.00	4381.06	6525.00	6927.36	0.55	6927.36	FAIL	
Blackburn Offsets	(CUNNINGHAM UNIT 1) (05-123-11835)	CUNNINGHAM UNIT 1	CUNNINGHAM UNIT 1	OWB\OWB	Abandoned	14605.15	5187.68	14605.15	14605.60	0.61	14605.60	FAIL	
Blackburn Offsets	(VAUGHAN 12-30) (05-123-12596)	VAUGHAN 12-30	VAUGHAN 12-30	OWB\OWB	Abandoned	15799.11	5427.69	15799.11	15799.68	0.63	15799.68	FAIL	
Blackburn Offsets	(NOE 1-30) (05-123-13288)	NOE 1-30	NOE 1-30	OWB\OWB	Abandoned	13186.66	5490.69	13186.66	13187.07	0.64	13187.07	FAIL	
Blackburn Offsets	(GEMINI K FEDERAL 1-16) (05-123-13872)	GEMINI K FEDERAL 1-16	GEMINI K FEDERAL 1-16	OWB\OWB	Abandoned	1469.11	5292.55	1469.11	7035.23	0.68	7035.23	FAIL	
Blackburn Offsets	(GEMINI G FEDERAL 6-33) (05-123-30688)	GEMINI G FEDERAL 6-33	GEMINI G FEDERAL 6-33	OWB\OWB	Suspended	25.00	5200.08	300.00	7077.18	0.69	7077.18	FAIL	
SEC.24-T5N-R66W	SLOT#12 HORII #1 (05-123-11135) PA	HORII #1	HORII #1 AWB	HORII #1 AWP	Abandoned	17716.43	1504.72	17716.43	17716.43	0.69	17716.43	FAIL	
Blackburn Offsets	(STENZEL 1 - 31) (05-123-13295)	STENZEL 1 - 31	STENZEL 1 - 31	OWB\OWB	Abandoned	12243.05	6338.60	12243.05	12243.53	0.74	12243.53	FAIL	
Blackburn Offsets	(SYLVESTER 31-6H5) (05-123-18190)	SYLVESTER 31-6H5	SYLVESTER 31-6H5	OWB\OWB	Abandoned	25.00	5952.14	10804.11	10804.11	0.77	10804.11	FAIL	
Blackburn Offsets	(ANDERSON COOMBS 4) (05-123-12850)	ANDERSON COOMBS 4	ANDERSON COOMBS 4	OWB\OWB	Abandoned	14671.15	131.40	14671.15	14680.55	1.06	14680.55	WARN	
Blackburn Offsets	(GOODNER 6-1) (05-123-13912)	GOODNER 6-1	GOODNER 6-1	OWB\OWB	Abandoned	25.00	8467.52	300.00	7404.59	1.15	7404.59	PASS	

OFFSET WELL CLEARANCE SUMMARY (171 Offset Wellpaths selected) Ratios are calculated in Closest Approach plane

Offset Facility	Offset Slot	Offset Well	Offset Wellbore	Offset Wellpath	Wellbore Status	C-C Clearance Distance			Rule Separation Ratio			
						Ref MD [ft]	Min C-C Clear Dist [ft]	Diverging from MD [ft]	Ref MD of Min Ratio [ft]	Min Ratio	Min Ratio Dvrg from [ft]	Rule Status
SEC.24-T5N-R66W	SLOT#13 HORII #2 (05-123-11748) PA	HORII #2	HORII #2 AWB	HORII #2 AWP	Abandoned	17716.43	2540.77	17716.43	17716.43	1.17	17716.43	PASS
Blackburn Offsets	(ANDERSON COOMBS 5) (05-123-12851)	ANDERSON COOMBS 5	ANDERSON COOMBS 5	OWB\OWB	Abandoned	16079.40	164.79	16079.40	16088.47	1.18	16088.47	PASS
Blackburn Offsets	STATE-HUME #90750 (05-123-12899)	STATE-HUME #90750	STATE-HUME #90750	OWB\OWB	Abandoned	11921.14	114.23	11921.14	11929.44	1.26	11929.44	PASS
SEC.24-T5N-R66W	SLOT#10 DUELL #1 (05-123-11750) PA	DUELL #1	DUELL #1 AWB	DUELL #1 AWP	Abandoned	17716.43	2733.20	17716.43	17716.43	1.27	17716.43	PASS
SEC.36-T05N-R66W	SLOT#04 CAPITOL 04N (268'FSL & 2336'FWL,SEC.36)	CAPITOL 04N	CAPITOL 04N PWB	CAPITOL 04N (REV-E.0) PWP	Planned	302.03	15.04	17416.39	17416.39	1.47	17416.39	PASS
SEC.36-T05N-R66W	SLOT#02 CAPITOL 02N (296'FSL & 2323'FWL,SEC.36)	CAPITOL 02N	CAPITOL 02N PWB	CAPITOL 02N (REV-E.0) PWP	Planned	25.00	14.98	17716.43	1154.26	1.48	17716.43	PASS



Closest Approach Clearance Summary Report

CAPITOL 03N (REV-E.0) PWP - SPE WPTS Stop Drilling HSE Risk (2017)

Page 4 of 9



REFERENCE WELLPATH IDENTIFICATION			
Operator	PDC ENERGY INC	Well	CAPITOL 03N
Field	WELD COUNTY (NAD83/GRID)	API/Legal	
Facility	SEC.36-T05N-R66W	Wellbore	CAPITOL 03N PWB
Slot	SLOT#03 CAPITOL 03N (282'FSL & 2329'FWL,SEC.36)		

CALCULATION RANGE & CUTOFF		
From: 25.00ft MD	To: 17716.43ft MD	C-C Cutoff: (none)

OFFSET WELL CLEARANCE SUMMARY (171 Offset Wellpaths selected) Ratios are calculated in Closest Approach plane												
Offset Facility	Offset Slot	Offset Well	Offset Wellbore	Offset Wellpath	Wellbore Status	C-C Clearance Distance			Rule Separation Ratio			
						Ref MD [ft]	Min C-C Clear Dist [ft]	Diverging from MD [ft]	Ref MD of Min Ratio [ft]	Min Ratio	Min Ratio Dvrg from [ft]	Rule Status
Blackburn Offsets	(SYLVESTER 36-16H6) (05-123-18113)	SYLVESTER 36-16H6	SYLVESTER 36-16H6	SYLVESTER 36-16H6 AWP	Producing / injecting	25.00	2357.73	8157.32	8157.32	1.81	8157.32	PASS
Blackburn Offsets	(SYLVESTER 36-9H6) (05-123-12507)	SYLVESTER 36-9H6	SYLVESTER 36-9H6	SYLVESTER 36-9H6 AWP	Producing / injecting	25.00	2754.02	9170.29	9170.29	1.81	9170.29	PASS
SEC.24-T5N-R66W	SLOT#15 RKW #1 (05-123-10763) PA	RKW #1	RKW #1 AWB	RKW #1 AWP	Abandoned	17716.43	4365.38	17716.43	17716.43	2.01	17716.43	PASS
SEC.24-T5N-R66W	SLOT#14 MEYER #1 (05-123-12474) PA	MEYER #1	MEYER #1 AWB	MEYER #1 AWP	Abandoned	17716.43	4954.38	17716.43	17716.43	2.29	17716.43	PASS
Blackburn Offsets	(SYLVESTER 31-12H5) (05-123-18191)	SYLVESTER 31-12H5	SYLVESTER 31-12H5	SYLVESTER 31-12H5 AWP	Producing / injecting	25.00	4179.59	9523.64	9523.64	2.48	9523.64	PASS
SEC.36-T05N-R66W	SLOT#01 CAPITOL 01N (310'FSL & 2317'FWL,SEC.36)	CAPITOL 01N	CAPITOL 01N PWB	CAPITOL 01N (REV-D.0) PWP	Planned	25.00	29.94	17716.43	17716.43	2.85	17716.43	PASS
Blackburn Offsets	(ISHIGURO 17-36) (05-123-25592)	ISHIGURO 17-36	ISHIGURO 17-36	ISHIGURO 17-36 AWP	Producing / injecting	11609.09	3155.39	11609.09	11614.56	2.95	11614.56	PASS
SEC.36-T05N-R66W	SLOT#05 CAPITOL 05N (254'FSL & 2342'FWL,SEC.36)	CAPITOL 05N	CAPITOL 05N PWB	CAPITOL 05N (REV-E.0) PWP	Planned	25.00	30.04	17243.64	17243.64	2.99	17243.64	PASS
Blackburn Offsets	(MCCARTHY FEDERAL 6-33) (05-123-19040)	MCCARTHY FEDERAL 6-33	MCCARTHY FEDERAL 6-33	MCCARTHY FEDERAL 6-33 AWP	Producing / injecting	25.00	6069.23	300.00	7146.18	3.24	7146.18	PASS
Blackburn Offsets	(MCCARTHY FEDERAL 6-35) (05-123-25323)	MCCARTHY FEDERAL 6-35	MCCARTHY FEDERAL 6-35	MCCARTHY FEDERAL 6-35 AWP	Producing / injecting	25.00	6255.65	300.00	7194.44	3.39	7194.44	PASS
Blackburn Offsets	(LOEFFLER K 01-69-1HN) (05-123-37735)	LOEFFLER K 01-69-1HN	LOEFFLER K 01-69-1HN	OWB\OWB	Producing / injecting	7166.63	220.58	7166.63	7238.60	3.48	7238.60	PASS
Blackburn Offsets	(PEPPLER 2-36) (05-123-14438)	PEPPLER 2-36	PEPPLER 2-36	OWB\OWB	Abandoned	9327.85	273.02	9327.85	9348.95	4.02	9348.95	PASS
Blackburn Offsets	(KFKA J 25-13) (05-123-19224)	KFKA J 25-13	KFKA J 25-13	OWB\OWB	Abandoned	13259.33	450.05	13259.33	13299.79	4.26	13299.79	PASS
		CAPITOL 06N	CAPITOL 06N PWB		Planned	301.22	44.99	17153.36	17153.36	4.51	17153.36	PASS

OFFSET WELL CLEARANCE SUMMARY (171 Offset Wellpaths selected) Ratios are calculated in Closest Approach plane												
Offset Facility	Offset Slot	Offset Well	Offset Wellbore	Offset Wellpath	Wellbore Status	C-C Clearance Distance			Rule Separation Ratio			
						Ref MD [ft]	Min C-C Clear Dist [ft]	Diverging from MD [ft]	Ref MD of Min Ratio [ft]	Min Ratio	Min Ratio Dvrg from [ft]	Rule Status
SEC.36-T05N-R66W	SLOT#06 CAPITOL 06N (241'FSL & 2348'FWL,SEC.36)			CAPITOL 06N (REV-E.0) PWP								
Blackburn Offsets	(PEPLER 1-36) (05-123-13270)	PEPLER 1-36	PEPLER 1-36	OWB\OWB	Abandoned	8035.96	324.86	8035.96	8034.62	5.30	8034.62	PASS
Blackburn Offsets	(LOEFFLER 1-18) (05-123-11673)	LOEFFLER 1-18	LOEFFLER 1-18	OWB\OWB	Producing / injecting	6687.55	327.54	6687.55	6714.24	5.92	6714.24	PASS
SEC.36-T05N-R66W	SLOT#07 CAPITOL 07N (227'FSL & 2355'FWL,SEC.36)	CAPITOL 07N	CAPITOL 07N PWB	CAPITOL 07N (REV-E.0) PWP	Planned	301.14	60.00	17139.96	17139.96	6.05	17139.96	PASS
Blackburn Offsets	(AD FED DOUBLE CLUTCH 20W-25-9) (05-123-45039)	AD FED DOUBLE CLUTC 20W-25-9	AD FED DOUBLE CLUTC 20W-25-9	OWB\OWB	Producing / injecting	17716.43	3513.03	17716.43	17716.43	7.40	17716.43	PASS
Blackburn Offsets	(AD FED DAIRY 20W-25-11) (05-123-41146)	AD FED DAIRY 20W-25-11	AD FED DAIRY 20W-25-11	OWB\OWB	Producing / injecting	17716.43	3120.15	17716.43	17521.49	7.42	17521.49	PASS
Blackburn Offsets	(AD FED DAIRY 20W-25-10) (05-123-45032)	AD FED DAIRY 20W-25-10	AD FED DAIRY 20W-25-10 AWB	OWB\OWB	Producing / injecting	17716.43	3217.28	17716.43	17664.75	7.43	17664.75	PASS
Blackburn Offsets	(AD FED DOUBLE CLUTCH 20W-25-8) (05-123-45035)	AD FED DOUBLE CLUTC 20W-25-8	AD FED DOUBLE CLUTC 20W-25-8	OWB\OWB	Producing / injecting	17716.43	3686.06	17716.43	17716.43	7.44	17716.43	PASS
SEC.36-T05N-R66W	SLOT#08 CAPITOL 08N (213'FSL & 2361'FWL,SEC.36)	CAPITOL 08N	CAPITOL 08N PWB	CAPITOL 08N (REV-E.0) PWP	Planned	301.11	75.01	17201.89	17201.89	7.52	17201.89	PASS
Blackburn Offsets	(AD FED DAIRY 20W-25-12) (05-123-40314)	AD FED DAIRY 20W-25-12	AD FED DAIRY 20W-25-12	OWB\OWB	Producing / injecting	17716.43	2932.48	17716.43	17159.52	7.55	17159.52	PASS
Blackburn Offsets	(AD FED DAIRY 20W-25-13) (05-123-45034)	AD FED DAIRY 20W-25-13	AD FED DAIRY 20W-25-13	OWB\OWB	Producing / injecting	17716.43	2826.88	17716.43	16949.64	7.60	16949.64	PASS
Blackburn Offsets	(AD FED DAIRY 20W-25-14) (05-123-41138)	AD FED DAIRY 20W-25-14	AD FED DAIRY 20W-25-14	OWB\OWB	Producing / injecting	17716.43	2736.34	17716.43	16698.35	7.69	16698.35	PASS



Closest Approach Clearance Summary Report

CAPITOL 03N (REV-E.0) PWP - SPE WPTS Stop Drilling HSE Risk (2017)

Page 5 of 9



REFERENCE WELLPATH IDENTIFICATION			
Operator	PDC ENERGY INC	Well	CAPITOL 03N
Field	WELD COUNTY (NAD83/GRID)	API/Legal	
Facility	SEC.36-T05N-R66W	Wellbore	CAPITOL 03N PWB
Slot	SLOT#03 CAPITOL 03N (282'FSL & 2329'FWL,SEC.36)		

CALCULATION RANGE & CUTOFF		
From: 25.00ft MD	To: 17716.43ft MD	C-C Cutoff: (none)

OFFSET WELL CLEARANCE SUMMARY (171 Offset Wellpaths selected) Ratios are calculated in Closest Approach plane												
Offset Facility	Offset Slot	Offset Well	Offset Wellbore	Offset Wellpath	Wellbore Status	C-C Clearance Distance			Rule Separation Ratio			
						Ref MD [ft]	Min C-C Clear Dist [ft]	Diverging from MD [ft]	Ref MD of Min Ratio [ft]	Min Ratio	Min Ratio Dvrg from [ft]	Rule Status
Blackburn Offsets	(AD FED LIBRARY 20W-25-17) (05-123-45033)	AD FED LIBRARY 20W-25-17	AD FED LIBRARY 20W-25-17	OWB\OWB	Suspended	17716.43	2508.04	17716.43	16001.46	7.83	16001.46	PASS
Blackburn Offsets	(AD FED DAIRY 20W-25-16) (05-123-45937)	AD FED DAIRY 20W-25-16	AD FED DAIRY 20W-25-16	OWB\OWB	Producing / injecting	17716.43	2599.79	17716.43	16210.28	7.90	16210.28	PASS
Blackburn Offsets	(AD FED DAIRY 20W-25-15) (05-123-41140)	AD FED DAIRY 20W-25-15	AD FED DAIRY 20W-25-15	OWB\OWB	Producing / injecting	17716.43	2646.10	17716.43	16343.95	7.91	16343.95	PASS
Blackburn Offsets	(AD FED LIBRARY 20W-25-18) (05-123-45037)	AD FED LIBRARY 20W-25-18	AD FED LIBRARY 20W-25-18	OWB\OWB	Producing / injecting	17716.43	2458.96	17716.43	15680.44	7.95	15680.44	PASS
Blackburn Offsets	(ANDERSON COOMBS 3) (05-123-12849)	ANDERSON COOMBS 3	ANDERSON COOMBS 3	OWB\OWB	Abandoned	17322.47	1247.09	17322.47	17339.33	8.06	17339.33	PASS
Blackburn Offsets	(ANDERSON-COOMBS 2) (05-123-12848)	ANDERSON-COOMBS 2	ANDERSON-COOMBS 2	OWB\OWB	Abandoned	16031.32	1186.13	16031.32	16047.93	8.62	16047.93	PASS
Blackburn Offsets	(LOEFFLER K 01-68-1HN) (05-123-35836)	LOEFFLER K 01-68-1HN	LOEFFLER K 01-68-1HN	OWB\OWB	Producing / injecting	6878.11	715.63	6878.11	6973.33	10.74	6973.33	PASS
Blackburn Offsets	(GREEN 1) (05-123-11874)	GREEN 1	GREEN 1	OWB\OWB	Abandoned	13430.61	1205.34	13430.61	13450.11	11.38	13450.11	PASS
Blackburn Offsets	(REHMER 36-14H6) (05-123-18686)	REHMER 36-14H6	REHMER 36-14H6	OWB\OWB	Abandoned	325.11	474.62	8125.00	355.49	11.52	8225.00	PASS
Blackburn Offsets	(ISHIGURO 2) (05-123-12900)	ISHIGURO 2	ISHIGURO 2	OWB\OWB	Abandoned	12290.65	1304.53	12290.65	12333.17	13.92	12333.17	PASS
Blackburn Offsets	(AD FED DOUBLE CLUTCH #20W-25-7) (05-123-45036)	AD FED DOUBLE CLUTCH #20W-25-7	AD FED DOUBLE CLUTCH #20W-25-7 AWB	AD FED DOUBLE CLUTCH #20W-25-7 AWP	Producing / injecting	17716.43	3825.89	17716.43	17716.43	15.14	17716.43	PASS
Blackburn Offsets	(CURTIS 23-25) (05-123-31134)	CURTIS 23-25	CURTIS 23-25	OWB\OWB	Producing / injecting	14100.68	1859.93	14100.68	14179.92	15.35	14179.92	PASS
Blackburn Offsets	(AD FED DOUBLE CLUTCH #20W-25-6) (05-123-45040)	AD FED DOUBLE CLUTCH #20W-25-6	AD FED DOUBLE CLUTCH #20W-25-6 AWB	AD FED DOUBLE CLUTCH #20W-25-6 AWP	Producing / injecting	17716.43	4023.81	17716.43	17716.43	15.65	17716.43	PASS
						17716.43	4213.10	17716.43	17716.43	16.27	17716.43	PASS

OFFSET WELL CLEARANCE SUMMARY (171 Offset Wellpaths selected) Ratios are calculated in Closest Approach plane													
Offset Facility	Offset Slot	Offset Well	Offset Wellbore	Offset Wellpath	Wellbore Status	C-C Clearance Distance			Rule Separation Ratio				
						Ref MD [ft]	Min C-C Clear Dist [ft]	Diverging from MD [ft]	Ref MD of Min Ratio [ft]	Min Ratio	Min Ratio Dvrg from [ft]	Rule Status	
Blackburn Offsets	(AD FED J EVANS #20W-25-5) (05-123-45038)	AD FED J EVANS #20W-25-5	AD FED J EVANS #20W-25-5 AWB	AD FED J EVANS #20W-25-5 AWP	Producing / injecting								
Blackburn Offsets	(AD FED J EVANS #20W-25-4) (05-123-41135)	AD FED J EVANS #20W-25-4	AD FED J EVANS #20W-25-4 AWB	AD FED J EVANS #20W-25-4 AWP	Producing / injecting	17716.43	4300.87	17716.43	17716.43	16.40	17716.43	PASS	
Blackburn Offsets	(FREEDA REEVE 4-1) (05-123-15319)	FREEDA REEVE 4-1	FREEDA REEVE 4-1	OWB\OWB	Abandoned	2717.85	772.17	2717.85	3166.29	16.73	3166.29	PASS	
Blackburn Offsets	(WASS 4) (05-123-11757)	WASS 4	WASS 4	OWB\OWB	Abandoned	17260.74	2586.91	17260.74	17460.48	16.74	17460.48	PASS	
Blackburn Offsets	(AD FED J EVANS #20W-25-3) (05-123-41133)	AD FED J EVANS #20W-25-3	AD FED J EVANS #20W-25-3 AWB	AD FED J EVANS #20W-25-3 AWP	Producing / injecting	17716.43	4525.29	17716.43	17716.43	17.03	17716.43	PASS	
Blackburn Offsets	(AD FED J EVANS #20W-25-2) (05-123-45041)	AD FED J EVANS #20W-25-2	AD FED J EVANS #20W-25-2 AWB	AD FED J EVANS #20W-25-2 AWP	Producing / injecting	17716.43	4732.89	17716.43	17716.43	17.65	17716.43	PASS	
Blackburn Offsets	(AD FED J EVANS #20W-25-1) (05-123-41137)	AD FED J EVANS #20W-25-1	AD FED J EVANS #20W-25-1 AWB	AD FED J EVANS #20W-25-1 AWP	Producing / injecting	17716.43	4837.30	17716.43	17716.43	18.01	17716.43	PASS	
Blackburn Offsets	(CURTIS 36-25) (05-123-31207)	CURTIS 36-25	CURTIS 36-25	OWB\OWB	Producing / injecting	12808.60	1960.95	12808.60	12971.17	18.24	12971.17	PASS	
Blackburn Offsets	(GEMINI K FEDERAL 01-99HZ) (05-123-30686)	GEMINI K FEDERAL 01-99HZ	GEMINI K FEDERAL 01-99HZ	OBW\OBW	Producing / injecting	6625.00	3675.71	6625.00	6774.36	18.44	6774.36	PASS	
Blackburn Offsets	(BROWN 1) (05-123-12689)	BROWN 1	BROWN 1	OWB\OWB	Abandoned	9313.65	1242.61	9313.65	9349.93	18.74	9349.93	PASS	
Blackburn Offsets	(WASS 2) (05-123-11668)	WASS 2	WASS 2	OWB\OWB	Abandoned	15999.01	2585.94	15999.01	16220.23	18.75	16220.23	PASS	
Blackburn Offsets	(LOEFFLER K 01-67-1HN) (05-123-35835)	LOEFFLER K 01-67-1HN	LOEFFLER K 01-67-1HN	OWB\OWB	Suspended	6758.06	1286.78	6758.06	6875.97	18.96	6875.97	PASS	



Closest Approach Clearance Summary Report

CAPITOL 03N (REV-E.0) PWP - SPE WPTS Stop Drilling HSE Risk (2017)

Page 6 of 9



REFERENCE WELLPATH IDENTIFICATION			
Operator	PDC ENERGY INC	Well	CAPITOL 03N
Field	WELD COUNTY (NAD83/GRID)	API/Legal	
Facility	SEC.36-T05N-R66W	Wellbore	CAPITOL 03N PWB
Slot	SLOT#03 CAPITOL 03N (282'FSL & 2329'FWL,SEC.36)		

CALCULATION RANGE & CUTOFF		
From: 25.00ft MD	To: 17716.43ft MD	C-C Cutoff: (none)

OFFSET WELL CLEARANCE SUMMARY (171 Offset Wellpaths selected) Ratios are calculated in Closest Approach plane												
Offset Facility	Offset Slot	Offset Well	Offset Wellbore	Offset Wellpath	Wellbore Status	C-C Clearance Distance			Rule Separation Ratio			
						Ref MD [ft]	Min C-C Clear Dist [ft]	Diverging from MD [ft]	Ref MD of Min Ratio [ft]	Min Ratio	Min Ratio Dvrg from [ft]	Rule Status
Blackburn Offsets	(ISHIGURO 21-36) (05-123-28121)	ISHIGURO 21-36	ISHIGURO 21-36	OWB\OWB	Abandoned	11467.75	1984.51	11467.75	11659.20	21.22	11659.20	PASS
Blackburn Offsets	(ISHIGURO 25-36) (05-123-28120)	ISHIGURO 25-36	ISHIGURO 25-36	OWb\OWb	Producing / injecting	10177.16	2056.82	10177.16	10511.10	21.69	10511.10	PASS
Blackburn Offsets	(WASS 3X) (05-123-13279)	WASS 3X	WASS 3X	OWB\OWB	Abandoned	14697.73	2715.13	14697.73	14985.38	22.30	14985.38	PASS
Blackburn Offsets	(GP J EVANS FED #20W-20-16) (05-123-41134)	GP J EVANS FED #20W-20-16	GP J EVANS FED #20W-20-16 AWB	GP J EVANS FED #20W-20-16 AWP	Producing / injecting	17716.43	5488.10	17716.43	17716.43	22.46	17716.43	PASS
Blackburn Offsets	(GP HILLSIDE FED #20W-20-15) (05-123-41145)	GP HILLSIDE FED #20W-20-15	GP HILLSIDE FED #20W-20-15 AWB	GP HILLSIDE FED #20W-20-15 AWP	Producing / injecting	17716.43	5651.33	17716.43	17716.43	22.89	17716.43	PASS
Blackburn Offsets	(CURTIS 15-25) (05-123-31132)	CURTIS 15-25	CURTIS 15-25	OWB\OWB	Abandoned	13533.58	2478.10	13533.58	13793.49	23.05	13793.49	PASS
Blackburn Offsets	(WASS 5) (05-123-13781)	WASS 5	WASS 5	OWB\OWB	Abandoned	17125.41	3596.52	17125.41	17575.34	23.34	17575.34	PASS
Blackburn Offsets	(GP HILLSIDE FED #20W-20-14) (05-123-44430)	GP HILLSIDE FED #20W-20-14	GP HILLSIDE FED #20W-20-14 AWB	GP HILLSIDE FED #20W-20-14 AWP	Producing / injecting	17716.43	5852.82	17716.43	17716.43	23.52	17716.43	PASS
Blackburn Offsets	(GP HILLSIDE FED #20W-20-13) (05-123-41143)	GP HILLSIDE FED #20W-20-13	GP HILLSIDE FED #20W-20-13 AWB	GP HILLSIDE FED #20W-20-13 AWP	Producing / injecting	17716.43	6085.14	17716.43	17716.43	24.30	17716.43	PASS
SEC.24-T5N-R66W	SLOT#11 DUELL #2 (05-123-12788) PA	DUELL #2	DUELL #2 AWB	DUELL #2 AWP	Abandoned	17716.43	3453.37	17716.43	17716.43	24.66	17716.43	PASS
Blackburn Offsets	(FREEDA REEVE 3-1) (05-123-15083)	FREEDA REEVE 3-1	FREEDA REEVE 3-1	OWB\OWB	Abandoned	6501.37	1682.09	6501.37	6619.21	27.25	6619.21	PASS
Blackburn Offsets	(LOEFFLER K 01-66-1HN ST) (05-123-35834)	LOEFFLER K 01-66-1HN ST	LOEFFLER K 01-66-1HN ST	OWB\OWB	Producing / injecting	6725.00	1930.78	6725.00	6844.95	27.30	6844.95	PASS
Blackburn Offsets	(ISHIGURO 1) (05-123-11904)	ISHIGURO 1	ISHIGURO 1	OWB\OWB	Abandoned	12152.57	2583.83	12152.57	12472.27	27.63	12472.27	PASS
		LOEFFLER #2-24	LOEFFLER #2-24	OWB\OWB		6602.24	1570.31	6602.24	6682.44	27.71	6682.44	PASS

OFFSET WELL CLEARANCE SUMMARY (171 Offset Wellpaths selected) Ratios are calculated in Closest Approach plane												
Offset Facility	Offset Slot	Offset Well	Offset Wellbore	Offset Wellpath	Wellbore Status	C-C Clearance Distance			Rule Separation Ratio			
						Ref MD [ft]	Min C-C Clear Dist [ft]	Diverging from MD [ft]	Ref MD of Min Ratio [ft]	Min Ratio	Min Ratio Dvrg from [ft]	Rule Status
Blackburn Offsets	(LOEFFLER #2-24) (05-123-11888)				Producing / injecting							
Blackburn Offsets	(LOEFFLER K 01-66-1HN) (05-123-35834)	LOEFFLER K 01-66-1HN	LOEFFLER K 01-66-1HN	OWB\OWB	Abandoned	6625.00	1947.91	6625.00	6709.78	28.12	6709.78	PASS
Blackburn Offsets	(WASS 6) (05-123-13265)	WASS 6	WASS 6	OWB\OWB	Abandoned	15824.15	3889.97	15824.15	16431.44	28.18	16431.44	PASS
Blackburn Offsets	(REHMER 1) (05-123-12607)	REHMER 1	REHMER 1	Wellbore #1OWB\OWB	Abandoned	25.00	1183.97	8125.00	333.06	28.80	10125.00	PASS
Blackburn Offsets	(GP-DAIRY 1-20-19) (05-123-40328)	GP-DAIRY 1-20-19	GP-DAIRY 1-20-19 ST01	GP-DAIRY 1-20-19 ST01	Producing / injecting	17716.43	5595.92	17716.43	17716.43	29.59	17716.43	PASS
Blackburn Offsets	(LOEFFLER K 01-65HN) (05-123-37739)	LOEFFLER K 01-65HN	LOEFFLER K 01-65HN	OWB\OWB	Producing / injecting	6547.94	2013.20	6547.94	6679.09	30.63	6679.09	PASS
Blackburn Offsets	(CURTIS 37-25) (05-123-31136)	CURTIS 37-25	CURTIS 37-25	OWB\OWB	Abandoned	12791.64	3222.87	12791.64	13332.09	31.77	13332.09	PASS
SEC.24-T5N-R66W	Slot #4 SEGL #22-24 (05-123-23842) SI	SEGL 22-24	SEGL 22-24 AWB	SEGL 22-24 AWP	Drilling	17716.43	2840.53	17716.43	17716.43	31.98	17716.43	PASS
Blackburn Offsets	(WASS 1) (05-123-10976)	WASS 1	WASS 1	OWB\OWB	Abandoned	14627.48	3972.85	14627.48	15340.45	32.25	15340.45	PASS
SEC.24-T5N-R66W	Slot #6 SEGL #7-24 (05-123-23840) PA	SEGL 7-24	SEGL 7-24 AWB	SEGL 7-24 AWP	Drilling	17716.43	4532.80	17716.43	17716.43	34.82	17716.43	PASS
Blackburn Offsets	(CAVANAGH 36-10H6) (05-123-18232)	CAVANAGH 36-10H6	CAVANAGH 36-10H6	OWB\OWB	Abandoned	301.35	1890.76	9325.00	9665.05	35.03	9665.05	PASS
Blackburn Offsets	(ISHIGURO 24-36) (05-123-28119)	ISHIGURO 24-36	ISHIGURO 24-36	OWB\OWB	Abandoned	10140.43	3325.12	10140.43	10496.77	35.73	17025.00	PASS



Closest Approach Clearance Summary Report

CAPITOL 03N (REV-E.0) PWP - SPE WPTS Stop Drilling HSE Risk (2017)

Page 7 of 9



REFERENCE WELLPATH IDENTIFICATION			
Operator	PDC ENERGY INC	Well	CAPITOL 03N
Field	WELD COUNTY (NAD83/GRID)	API/Legal	
Facility	SEC.36-T05N-R66W	Wellbore	CAPITOL 03N PWB
Slot	SLOT#03 CAPITOL 03N (282'FSL & 2329'FWL,SEC.36)		

CALCULATION RANGE & CUTOFF		
From: 25.00ft MD	To: 17716.43ft MD	C-C Cutoff: (none)

OFFSET WELL CLEARANCE SUMMARY (171 Offset Wellpaths selected) Ratios are calculated in Closest Approach plane													
Offset Facility	Offset Slot	Offset Well	Offset Wellbore	Offset Wellpath	Wellbore Status	C-C Clearance Distance			Rule Separation Ratio				
						Ref MD [ft]	Min C-C Clear Dist [ft]	Diverging from MD [ft]	Ref MD of Min Ratio [ft]	Min Ratio	Min Ratio Dvrg from [ft]	Rule Status	
SEC.24-T5N-R66W	SLOT#16 S.E.G.L. #1 (05-123-11776) PA	S.E.G.L. #1	S.E.G.L. #1 AWB	S.E.G.L. #1 AWP	Abandoned	17716.43	3702.08	17716.43	17716.43	38.69	17716.43	PASS	
Blackburn Offsets	(ISHIGURO 30-31) (05-123-28189)	ISHIGURO 30-31	ISHIGURO 30-31	OWB\OWB	Producing / injecting	312.71	4210.71	12625.00	13937.29	40.26	13937.29	PASS	
Blackburn Offsets	(ISHIGURO 3) (05-123-12891)	ISHIGURO 3	ISHIGURO 3	OWB\OWB	Abandoned	12025.49	3867.67	12025.49	12876.91	41.34	12876.91	PASS	
Blackburn Offsets	(JOHNSON X1 1-1-06) (05-123-26716)	JOHNSON X1 1-1-06	JOHNSON X1 1-1-06	OWB\OWB	Producing / injecting	1915.83	4916.78	3025.00	7304.98	41.43	7304.98	PASS	
SEC.24-T5N-R66W	Slot #8 SEGL #21-24X (05-123-23843) PA	SEGL 21-24X	SEGL 21-24X ST AWB	SEGL 21-24X ST AWP	Drilling	17716.43	4828.05	17716.43	17716.43	41.85	17716.43	PASS	
SEC.24-T5N-R66W	Slot #9 SEGL #17-24 (05-123-23839) PA	SEGL 17-24	SEGL 17-24 AWB	SEGL 17-24 AWP	Drilling	17716.43	5304.94	17716.43	17716.43	41.86	17716.43	PASS	
SEC.24-T5N-R66W	Slot #8 SEGL #21-24X (05-123-23843) PA	SEGL 21-24X	SEGL 21-24X AWB	SEGL 21-24X AWP	Drilling	17716.43	4739.63	17716.43	17716.43	42.47	17716.43	PASS	
SEC.24-T5N-R66W	SLOT#17 S.E.G.L. #2 (05-123-12475) PA	S.E.G.L. #2	S.E.G.L. #2 AWB	S.E.G.L. #2 AWP	Abandoned	17716.43	3311.38	17716.43	17716.43	42.94	17716.43	PASS	
Blackburn Offsets	(COMMONS Z2 2-2-06) (05-123-26712)	COMMONS Z2 2-2-06	COMMONS Z2 2-2-06	OWB\OWB	Producing / injecting	1481.84	5240.01	1481.84	6664.47	43.00	7125.00	PASS	
Blackburn Offsets	(GEMINI K1-11) (05-123-15177)	GEMINI K1-11	GEMINI K1-11	OWB\OWB	Suspended	6525.00	2684.92	6525.00	6725.00	43.81	6725.00	PASS	
Blackburn Offsets	(GEMINI K1-12) (05-123-15197)	GEMINI K1-12	GEMINI K1-12	OWB\OWB	Suspended	6575.84	2663.12	6575.84	6699.10	43.93	6699.10	PASS	
Blackburn Offsets	(HAMBLEN 1-30) (05-123-13151) - Could not confirm gyro from ECMC	HAMBLEN 1-30	HAMBLEN 1-30	OWB\OWB	Abandoned	15777.27	6352.10	15777.27	17523.53	44.24	17523.53	PASS	
Blackburn Offsets	(REEVE, FRED A 1-1) (05-123-11780)	REEVE, FRED A 1-1	REEVE, FRED A 1-1	OWB\OWB	Abandoned	867.70	2340.94	867.70	6596.07	46.16	6596.07	PASS	
	(ISHIGURO 6) (05-123-12893)	ISHIGURO 6	ISHIGURO 6	OWB\OWB	Abandoned	10781.83	3937.33	10781.83	11792.81	48.76	11792.81	PASS	

OFFSET WELL CLEARANCE SUMMARY (171 Offset Wellpaths selected) Ratios are calculated in Closest Approach plane													
Offset Facility	Offset Slot	Offset Well	Offset Wellbore	Offset Wellpath	Wellbore Status	C-C Clearance Distance			Rule Separation Ratio				
						Ref MD [ft]	Min C-C Clear Dist [ft]	Diverging from MD [ft]	Ref MD of Min Ratio [ft]	Min Ratio	Min Ratio Dvrg from [ft]	Rule Status	
Blackburn Offsets													
SEC.24-T5N-R66W	Slot #2 SEGL #18-24 (05-123-23051) SI	SEGL 18-24	SEGL 18-24 (AWB)	SEGL 18-24 (AWP#1)	Other	17716.43	4268.32	17716.43	17716.43	50.05	17716.43	PASS	
SEC.24-T5N-R66W	Slot #5 SEGL #2-24 (05-123-23841) PA	SEGL 2-24	SEGL 2-24 AWB	SEGL 2-24 AWP	Drilling	17716.43	5630.25	17716.43	17716.43	50.73	17716.43	PASS	
SEC.24-T5N-R66W	Slot #1 SEGL #3-24 (05-123-20620) PA	SEGL 3-24	SEGL 3-24 (AWB)	SEGL 3-24 (AWP#1)	Other	17716.43	5107.96	17716.43	17716.43	51.89	17716.43	PASS	
Blackburn Offsets	(CITY OF GREELEY 1-30) (05-123-13152) - Could not confirm gyro from ECMC	CITY OF GREELEY 1-30	CITY OF GREELEY 1-30	OWB\OWB	Abandoned	14243.75	6743.12	14243.75	16490.51	53.08	16490.51	PASS	
Blackburn Offsets	(SYLVESTER F 31-32D) (05-123-33215)	SYLVESTER F 31-32D	SYLVESTER F 31-32D	OWB\OWB	Producing / injecting	141.66	4225.92	9925.00	11113.59	53.89	11113.59	PASS	
Blackburn Offsets	(ISHIGURO 4) (05-123-12924)	ISHIGURO 4	ISHIGURO 4	OWB\OWB	Abandoned	12067.52	5266.18	12067.52	13748.36	54.08	13748.36	PASS	
SEC.24-T5N-R66W	Slot #3 SEGL #4-24 (05-123-23050) SI	SEGL 4-24	SEGL 4-24 (AWB)	SEGL 4-24 (AWP#1)	Other	17716.43	5006.70	17716.43	17716.43	55.03	17716.43	PASS	
Blackburn Offsets	(SYLVESTER 31-5H5) (05-123-18189) - Could not verify surveys	SYLVESTER 31-5H5	SYLVESTER 31-5H5	OWB\OWB	Abandoned	10682.28	5261.03	10682.28	12568.93	55.54	12568.93	PASS	
Blackburn Offsets	(CITY OF GREELEY 2-30) (05-123-13160) - Could not confirm gyro from ECMC	CITY OF GREELEY 2-30	CITY OF GREELEY 2-30	OWB\OWB	Abandoned	13406.25	6470.97	13406.25	15639.59	55.63	15639.59	PASS	
Blackburn Offsets	(SYLVESTER G 06-30D) (05-123-33120)	SYLVESTER G 06-30D	SYLVESTER G 06-30D	OWB\OWB	Producing / injecting	325.00	2369.51	325.00	406.88	57.60	7325.00	PASS	
Blackburn Offsets	(SYLVESTER 1-116) (05-123-18157)	SYLVESTER 1-116	SYLVESTER 1-116	OWB\OWB	Abandoned	319.24	2377.09	319.24	459.70	57.77	7525.00	PASS	



Closest Approach Clearance Summary Report

CAPITOL 03N (REV-E.0) PWP - SPE WPTS Stop Drilling HSE Risk (2017)
Page 8 of 9



REFERENCE WELLPATH IDENTIFICATION			
Operator	PDC ENERGY INC	Well	CAPITOL 03N
Field	WELD COUNTY (NAD83/GRID)	API/Legal	
Facility	SEC.36-T05N-R66W	Wellbore	CAPITOL 03N PWB
Slot	SLOT#03 CAPITOL 03N (282'FSL & 2329'FWL,SEC.36)		

CALCULATION RANGE & CUTOFF		
From: 25.00ft MD	To: 17716.43ft MD	C-C Cutoff: (none)

OFFSET WELL CLEARANCE SUMMARY (171 Offset Wellpaths selected) Ratios are calculated in Closest Approach plane													
Offset Facility	Offset Slot	Offset Well	Offset Wellbore	Offset Wellpath	Wellbore Status	C-C Clearance Distance			Rule Separation Ratio				
						Ref MD [ft]	Min C-C Clear Dist [ft]	Diverging from MD [ft]	Ref MD of Min Ratio [ft]	Min Ratio	Min Ratio Dvrg from [ft]	Rule Status	
Blackburn Offsets	(SANDAU X4 3-1-06) (05-123-26717)	SANDAU X4 3-1-06	SANDAU X4 3-1-06	OWB\OWB	Abandoned	685.50	5241.57	685.50	7103.57	58.28	7103.57	PASS	
Blackburn Offsets	(EVANS INDUSTRIAL PARK 2) (05-123-16656)	EVANS INDUSTRIAL PARK 2	EVANS INDUSTRIAL PARK 2	OWB\OWB\	Abandoned	14638.26	8056.04	14638.26	17696.32	58.78	17696.32	PASS	
Blackburn Offsets	(GEMINI K 1-10) (05-123-13869)	GEMINI K 1-10	GEMINI K 1-10	OWB\OWB	Abandoned	3282.86	3770.88	3282.86	6665.23	63.19	6665.23	PASS	
Blackburn Offsets	(EVANS INDUSTRIAL PARK 1) (05-123-16337) - Could not confirm gyro from ECMC	EVANS INDUSTRIAL PARK 1	EVANS INDUSTRIAL PARK 1	OWB\OWB	Abandoned	13488.42	7918.99	13488.42	16754.30	64.10	16754.30	PASS	
Blackburn Offsets	(BRANTNER 30-9) (05-123-13310)	BRANTNER 30-9	BRANTNER 30-9	OWB\OWB	Abandoned	14536.20	9102.62	14536.20	17716.43	64.61	17716.43	PASS	
Blackburn Offsets	(SYLVESTER F 31-20D) (05-123-33217)	SYLVESTER F 31-20D	SYLVESTER F 31-20D	OWB\OWB	Abandoned	156.92	4249.05	10125.00	12387.24	65.54	12387.24	PASS	
Blackburn Offsets	(GEMINI K 1-13) (05-123-17669)	GEMINI K 1-13	GEMINI K 1-13	OWB\OWB	Abandoned	6625.00	4243.21	6625.00	6825.00	66.75	6825.00	PASS	
Blackburn Offsets	(GP-DAIRY 1-20-19) (05-123-40328)	GP-DAIRY 1-20-19	GP-DAIRY 1-20-19	OWB\OWB	Producing / injecting	17716.43	12016.27	17716.43	17716.43	66.85	17716.43	PASS	
Blackburn Offsets	(DOVE HILL Z1 2-6-31) (05-123-26713)	DOVE HILL Z1 2-6-31	DOVE HILL Z1 2-6-31	OWB\OWB	Producing / injecting	25.00	5565.10	8725.00	10586.39	66.86	10586.39	PASS	
Blackburn Offsets	(ELLIS Y1 5-1-06) (05-123-25901)	ELLIS Y1 5-1-06	ELLIS Y1 5-1-06	OWB\OWB	Abandoned	25.00	5579.23	25.00	7025.00	68.46	16925.00	PASS	
Blackburn Offsets	(CONNELL X3 3-7-31) (05-123-26715)	CONNELL X3 3-7-31	CONNELL X3 3-7-31	CONNELL X3 3-7-31	Abandoned	322.87	5272.41	8025.00	7874.18	68.55	17225.00	PASS	
Blackburn Offsets	(UNION PACIFIC 1-1) (05-123-14011)	UNION PACIFIC 1-1	UNION PACIFIC 1-1	OWB\OWB	Abandoned	25.00	3198.15	25.00	6725.00	69.54	6725.00	PASS	
Blackburn Offsets	(BRANTNER 30-16) (05-123-13282)	BRANTNER 30-16	BRANTNER 30-16	OWB\OWB	Abandoned	13553.49	9280.87	13553.49	17716.43	71.03	17716.43	PASS	
	(SYLVESTER F 31-33) (05-123-33216)	SYLVESTER F 31-33	SYLVESTER F 31-33	OWB\OWB		326.14	3402.10	8725.00	10477.97	71.53	10477.97	PASS	

OFFSET WELL CLEARANCE SUMMARY (171 Offset Wellpaths selected) Ratios are calculated in Closest Approach plane													
Offset Facility	Offset Slot	Offset Well	Offset Wellbore	Offset Wellpath	Wellbore Status	C-C Clearance Distance			Rule Separation Ratio				
						Ref MD [ft]	Min C-C Clear Dist [ft]	Diverging from MD [ft]	Ref MD of Min Ratio [ft]	Min Ratio	Min Ratio Dvrg from [ft]	Rule Status	
Blackburn Offsets					Producing / injecting								
Blackburn Offsets	(SHAMROCK FEDERAL PC G 07-30D) (05-123-34885)	SHAMROCK FEDERAL PC G 07-30D	SHAMROCK FEDERAL PC G 07-30D	OWB\OWB	Producing / injecting	5084.50	6467.32	5084.50	6725.00	71.85	6725.00	PASS	
Blackburn Offsets	(COLE X6 4-8-31) (05-123-31836)	COLE X6 4-8-31	COLE X6 4-8-31	OWB\OWB	Abandoned	204.09	5318.78	7825.00	6625.00	74.06	6625.00	PASS	
Blackburn Offsets	(HAYS 31-2H5) (05-123-18211)	HAYS 31-2H5	HAYS 31-2H5	OWB\OWB	Abandoned	25.00	7562.61	11725.00	15519.74	75.20	15519.74	PASS	
Blackburn Offsets	(VALLEY PACK X5 3-5-31) (05-123-26714)	VALLEY PACK X5 3-5-31	VALLEY PACK X5 3-5-31	OWB\OWB	Abandoned	300.74	5303.13	9425.00	12180.89	76.55	12180.89	PASS	
Blackburn Offsets	(GEMINI K1-9) (05-123-13879)	GEMINI K1-9	GEMINI K1-9	OWB\OWB	Abandoned	183.34	4337.59	325.00	6725.00	77.70	6725.00	PASS	
Blackburn Offsets	(GEMINI K FEDERAL 1-15) (05-123-13871)	GEMINI K FEDERAL 1-15	GEMINI K FEDERAL 1-15	OWB\OWB	Abandoned	5615.29	4755.59	5615.29	6714.70	77.85	6714.70	PASS	
Blackburn Offsets	(STEWARTS Z4 6-2-06) (05-123-26711) - Need actual survey data	STEWARTS Z4 6-2-06	STEWARTS Z4 6-2-06	OWB\OWB	Abandoned	25.00	5594.95	7925.00	6563.10	79.89	16625.00	PASS	
Blackburn Offsets	(HAYS 31-1H5) (05-123-11327)	HAYS 31-1H5	HAYS 31-1H5	OWB\OWB	Abandoned	25.00	8797.65	12025.00	16858.92	80.36	16858.92	PASS	
Blackburn Offsets	(RE-1 X7 4-6-31) (05-123-31863)	RE-1 X7 4-6-31	RE-1 X7 4-6-31	OWB\OWB	Abandoned	25.00	5337.27	8625.00	10769.23	81.33	17125.00	PASS	
Blackburn Offsets	(SYLVESTER 1) (05-123-12010)	SYLVESTER 1	SYLVESTER 1	OWB\OWB	Abandoned	310.20	3683.72	8125.00	10064.01	81.67	10064.01	PASS	
Blackburn Offsets	(LASALLE PARK Y5 5-5-31) (05-123-25898)	LASALLE PARK Y5 5-5-31	LASALLE PARK Y5 5-5-31	OWB\OWB	Producing / injecting	425.00	5621.11	9225.00	12109.97	88.47	14825.00	PASS	



Closest Approach Clearance Summary Report

CAPITOL 03N (REV-E.0) PWP - SPE WPTS Stop Drilling HSE Risk (2017)
Page 9 of 9



REFERENCE WELLPATH IDENTIFICATION			
Operator	PDC ENERGY INC	Well	CAPITOL 03N
Field	WELD COUNTY (NAD83/GRID)	API/Legal	
Facility	SEC.36-T05N-R66W	Wellbore	CAPITOL 03N PWB
Slot	SLOT#03 CAPITOL 03N (282'FSL & 2329'FWL,SEC.36)		

CALCULATION RANGE & CUTOFF		
From: 25.00ft MD	To: 17716.43ft MD	C-C Cutoff: (none)

OFFSET WELL CLEARANCE SUMMARY (171 Offset Wellpaths selected) Ratios are calculated in Closest Approach plane													
Offset Facility	Offset Slot	Offset Well	Offset Wellbore	Offset Wellpath	Wellbore Status	C-C Clearance Distance			Rule Separation Ratio				
						Ref MD [ft]	Min C-C Clear Dist [ft]	Diverging from MD [ft]	Ref MD of Min Ratio [ft]	Min Ratio	Min Ratio Dvrg from [ft]	Rule Status	
Blackburn Offsets	(HAYS FEDERAL 31-8H5)(05-123-18213)	HAYS FEDERAL 31-8H5	HAYS FEDERAL 31-8H5	OWB\OWB	Abandoned	325.25	8020.68	10625.00	15929.32	89.85	15929.32	PASS	
Blackburn Offsets	(MAIN Y3 6-8-31) (05-123-31835)	MAIN Y3 6-8-31	MAIN Y3 6-8-31	OWB\OWB	Suspended	310.09	5849.91	8425.00	6671.75	90.53	16725.00	PASS	
Blackburn Offsets	(DABCO 1) (05-123-10955)	DABCO 1	DABCO 1	OWB\OWB	Abandoned	328.31	4346.08	328.31	6828.81	90.92	6828.81	PASS	
Blackburn Offsets	(HUMAN BEAN Y2 5-7-31) (05-123-25900)	HUMAN BEAN Y2 5-7-31	HUMAN BEAN Y2 5-7-31	OWB\OWB	Abandoned	325.00	5642.02	8725.00	6826.39	93.67	15325.00	PASS	
Blackburn Offsets	(DABCO 2) (05-123-11528)	DABCO 2	DABCO 2	OWB\OWB	Abandoned	25.00	5441.93	300.00	7125.00	93.98	7125.00	PASS	
Blackburn Offsets	(H&S 1) (05-123-11529)	H&S 1	H&S 1	OWB\OWB	Abandoned	100.10	5089.54	100.10	6825.00	95.99	6825.00	PASS	
Blackburn Offsets	(FARMERS Y7 6-6-31) (05-123-25896)	FARMERS Y7 6-6-31	FARMERS Y7 6-6-31	OWB\OWB	Abandoned	301.16	5881.81	9525.00	7229.86	97.77	16725.00	PASS	
Blackburn Offsets	(GOODNER Y4 7-1-06) (05-123-25899)	GOODNER Y4 7-1-06	GOODNER Y4 7-1-06	OWB\OWB	Abandoned	25.00	5611.59	8525.00	6736.88	97.86	16625.00	PASS	
Blackburn Offsets	(SHAMROCK FEDERAL G 07-29D) (05-123-34884)	SHAMROCK FEDERAL G 07-29D	SHAMROCK FEDERAL G 07-29D	OWB\OWB	Producing / injecting	372.03	6934.40	372.03	6846.74	98.14	6846.74	PASS	
Blackburn Offsets	(MCCOUTCHEONS Y8 7-5-31) (05-123-25895)	MCCOUTCHEONS Y8 7-5-31	MCCOUTCHEONS Y8 7-5-31	OWB\OWB	Abandoned	270.21	5894.32	9825.00	16044.70	99.20	16044.70	PASS	
Blackburn Offsets	(BALLFIELD Y6 7-7-31) (05-123-25897)	BALLFIELD Y6 7-7-31	BALLFIELD Y6 7-7-31	OWB\OWB	Abandoned	365.85	5859.46	9125.00	16922.15	101.41	16922.15	PASS	
Blackburn Offsets	(AMBER FEDERAL G06-21D) (05-123-34902)	AMBER FEDERAL G06-21D	AMBER FEDERAL G06-21D	OWB\OWB	Suspended	3872.36	7211.34	3872.36	6725.00	103.63	6725.00	PASS	
Blackburn Offsets	(GOODNER G FEDERAL 6-11) (05-123-12314)	GOODNER G FEDERAL 6-11	GOODNER G FEDERAL 6-11	OWB\OWB	Producing / injecting	325.25	6134.79	325.25	6925.00	117.20	6925.00	PASS	
		AMBER FEDERAL G06-22D	AMBER FEDERAL G06-22D	OWB\OWB	Suspended	907.80	8073.05	907.80	7032.45	118.90	7032.45	PASS	

OFFSET WELL CLEARANCE SUMMARY (171 Offset Wellpaths selected) Ratios are calculated in Closest Approach plane

Offset Facility	Offset Slot	Offset Well	Offset Wellbore	Offset Wellpath	Wellbore Status	C-C Clearance Distance			Rule Separation Ratio			
						Ref MD [ft]	Min C-C Clear Dist [ft]	Diverging from MD [ft]	Ref MD of Min Ratio [ft]	Min Ratio	Min Ratio Dvrg from [ft]	Rule Status
Blackburn Offsets	(AMBER FEDERAL G06-22D) (05-123-34904)											
Blackburn Offsets	(CURTIS G 6-8) (05-123-21981)	CURTIS G 6-8	CURTIS G 6-8	OWB\OWB	Abandoned	306.07	6953.69	306.07	12094.60	120.85	12094.60	PASS
Blackburn Offsets	(MCCARTHY 1) (05-123-10630)	MCCARTHY 1	MCCARTHY 1	OWB\OWB	Abandoned	364.04	6968.78	364.04	6922.55	125.92	6922.55	PASS
Blackburn Offsets	(AMBER G 05-32D) (05-123-34903)	AMBER G 05-32D	AMBER G 05-32D	OWB\OWB	Suspended	25.00	8159.71	25.00	7264.16	126.02	11325.00	PASS
Blackburn Offsets	(CURTIS G 6-7) (05-123-19429)	CURTIS G 6-7	CURTIS G 6-7	OWB\OWB	Suspended	320.52	6804.54	320.52	7186.98	134.05	7186.98	PASS
Blackburn Offsets	(DEVOTIE #1-6) (05-123-11773)	DEVOTIE #1-6	DEVOTIE #1-6	OWB\OWB	Abandoned	320.96	7279.91	320.96	7025.00	138.97	7025.00	PASS
Blackburn Offsets	(DEVOTIE 2-6) (05-123-14919)	DEVOTIE 2-6	DEVOTIE 2-6	OWB\OWB	Abandoned	300.99	7989.38	300.99	6896.61	141.65	6896.61	PASS
Blackburn Offsets	(MERCURE 6-1) (05-123-13626)	MERCURE 6-1	MERCURE 6-1	OWB\OWB	Abandoned	306.49	9085.54	306.49	6925.00	164.62	12325.00	PASS