

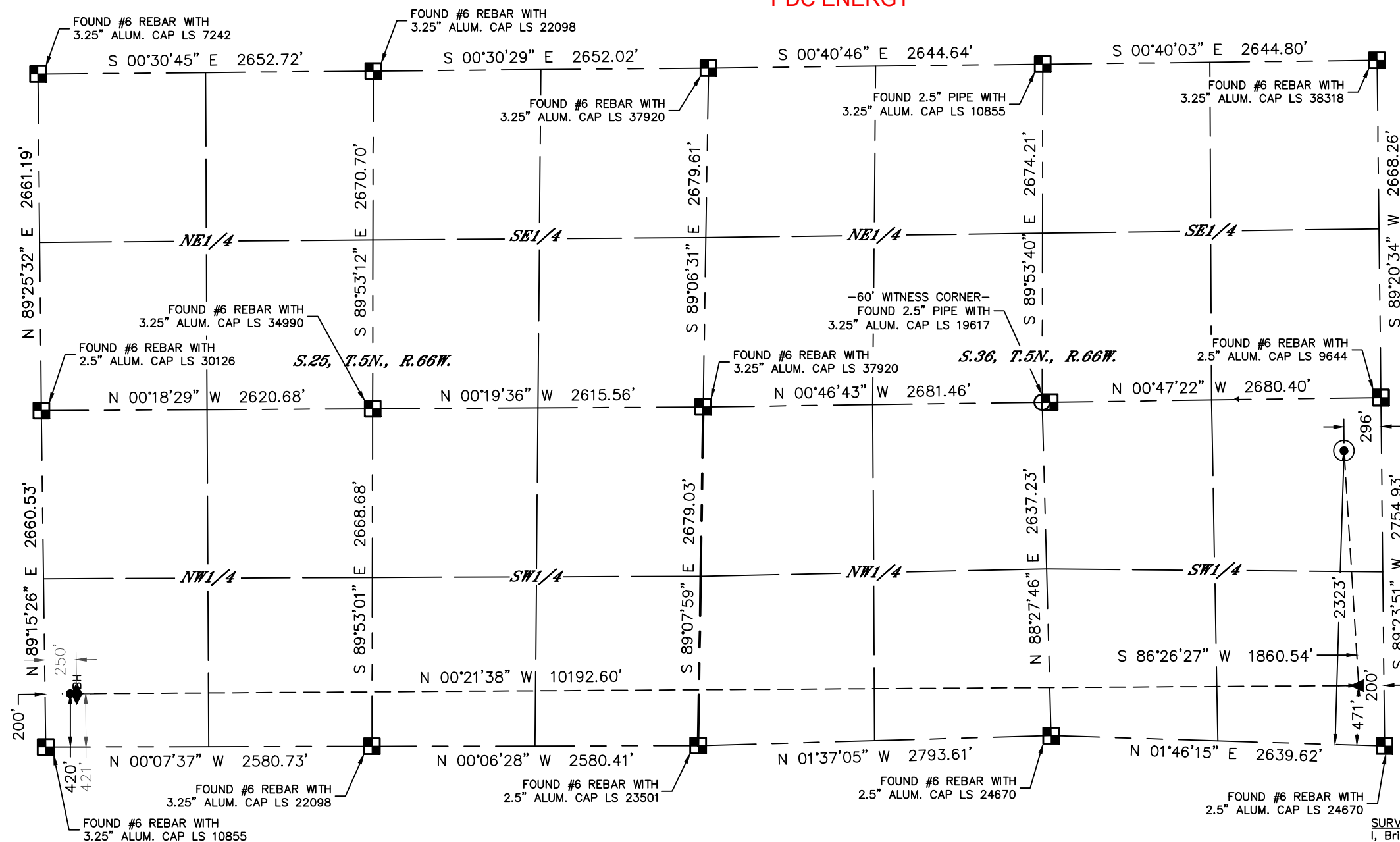


Lat40, Inc. 6250 W. 10th Street, Unit 2, Greeley, CO 970-515-5294

WELL LOCATION CERTIFICATE

CAPITOL 02N
PDC ENERGY

Q-Q: SESW
SECTION: 36
TOWNSHIP: 5N
RANGE: 66W
6TH. P.M.
WELD COUNTY, CO



- LEGEND**
- = ALIQUOT MONUMENT AS DESCRIBED
 - = CALCULATED POSITION
 - = SURFACE HOLE LOCATION (SHL)
 - ▲ = ENTRY POINT LOCATION (EP)
 - ◆ = BOTTOM OF PRODUCTIVE ZONE (BPZ)
 - = BOTTOM HOLE LOCATION (BHL)

NOTE:

- Bearings shown are Grid Bearings of the Colorado State Plane Coordinate System, North Zone, North American Datum 1983. The lined dimensions as contained herein are based upon the "U.S. Survey Foot."
- Distances to section lines measured at 90 degrees from said section lines.
- Ground elevations are based on an observed GPS elevation (NAVD 1988 DATUM).
- Latitude and Longitude shown are (NAD 83 DATUM).
- IMPROVEMENTS: See LOCATION DRAWING for all visible improvements.
- This map does not represent a boundary survey.
- According to Colorado law, you must commence any legal action based upon any defect in this W.L.C. within three years after you discover such defect. In no event, may any action based upon any defect in this survey be commenced more than ten years after the date of the certificate shown hereon. (13-80-105 C.R.S.)

CLIENT: PDC ENERGY, INC.				LANDMAN: KRISTY WEYERMAN			
INSTRUMENT OPERATOR: JOE DIGREGORIO				SURVEY DATE: 5/9/2022		SURFACE USE: CROPLAND	
SHL FOOTAGE	SHL LAT°	SHL LONG°	SHL PDOP	SHL ELEV (FT.)	SHL 1/4/1/4	SHL S-T-R	
296	FSL	2323	FWL	40.34925	-104.72675	1.6	4665

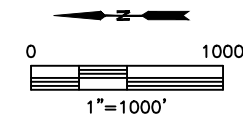
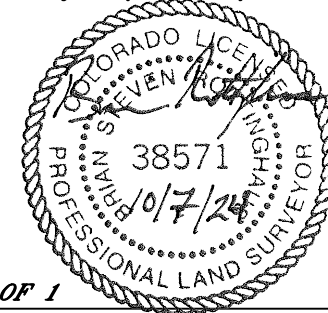
BHL FOOTAGE	BHL LAT°	BHL LONG°	BHL S-T-R
200	FNL	420	FWL
	40.37695	-104.73333	25-5-66

EP FOOTAGE	EP LAT°	EP LONG°	EP S-T-R
200	FSL	471	FWL
	40.34898	-104.73341	36-5-66

BPZ FOOTAGE	BPZ LAT°	BPZ LONG°	BPZ S-T-R
250	FNL	421	FWL
	40.37681	-104.73333	25-5-66

SURVEYOR'S STATEMENT

I, Brian S. Rottinghaus, a Colorado Licensed Professional Land Surveyor, do hereby state that this Well Location Certificate was prepared from an actual field survey by me or under my personal supervision on the date shown hereon, and correctly shows the well surface hole location as staked on the ground in relation to the existing section line monumentation as indicated hereon, all this to the best of my knowledge, information and belief. That this is not a Land Survey Plat or an Improvement Survey Plat, and that it is not to be relied upon for establishment of fence, building, or other future improvement lines. This certificate is not a guaranty or warranty, either expressed or implied.



SHEET 1 OF 1

Brian S. Rottinghaus—On behalf of Lat40, Inc.
Colorado Licensed Professional
Land Surveyor No. 38571

DATE: 10/7/2024
PROJECT#: 2021204.01