

# PDC ENERGY INC

Location: COLORADO Slot: SLOT#06 CAPITOL 06N (241'FSL & 2348'FWL,SEC.36)  
 Field: WELD COUNTY (NAD83/GRID) Well: CAPITOL 06N  
 Facility: SEC.36-T05N-R66W Wellbore: CAPITOL 06N PWB

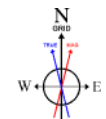
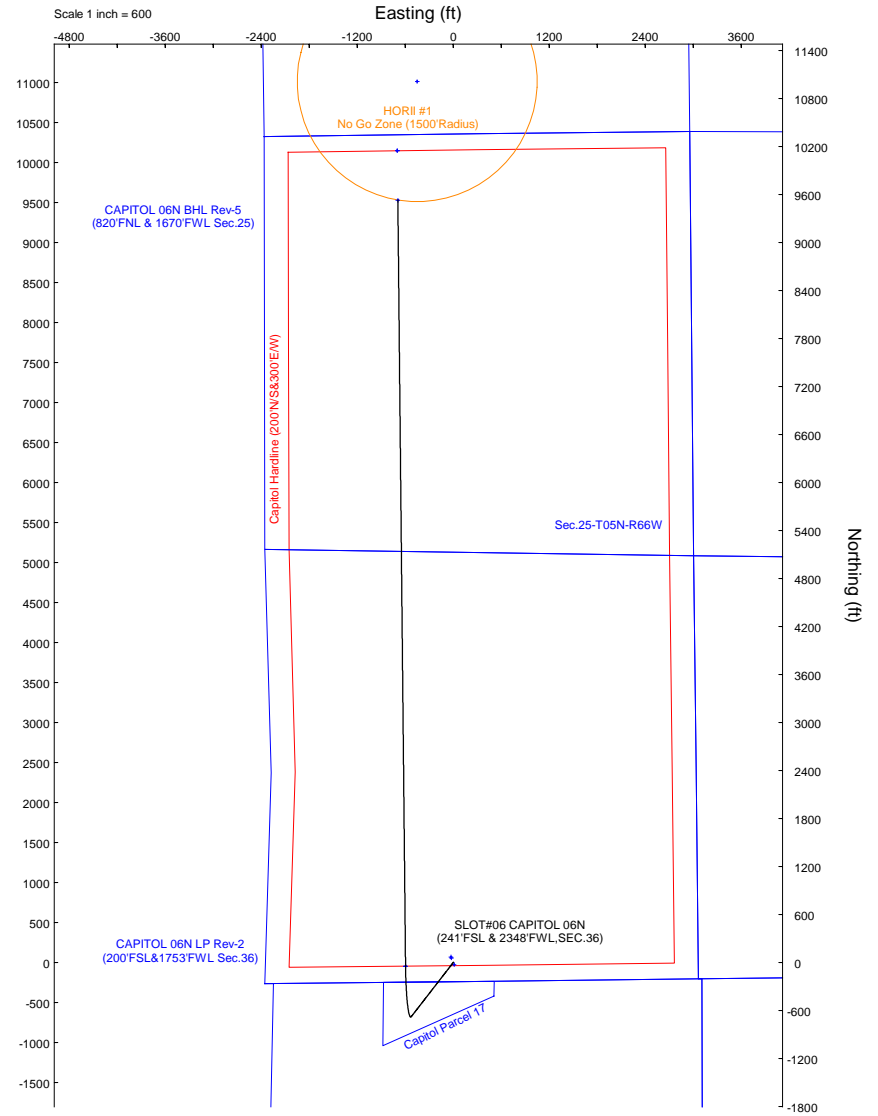
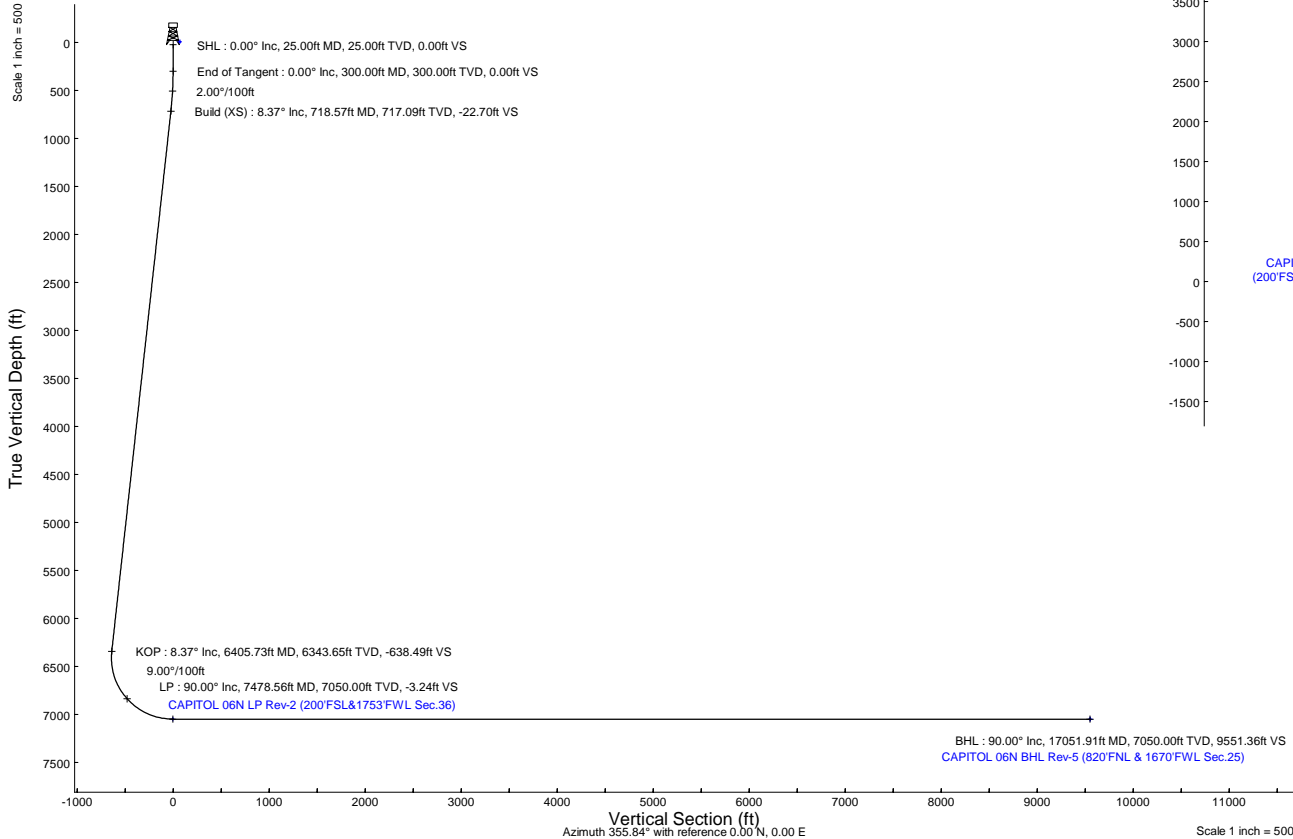
Plot reference wellpath is CAPITOL 06N (REV-E.0) PWP  
 Grid System: NAD83 / Lambert Colorado SP, Northern Zone (501), US feet  
 True vertical depths are referenced to Rig (4664'GL+25'KB = 4689'RKB) (RKB)  
 North Reference: Grid north  
 Reference wellpath measured depths are referenced to Rig (4664'GL+25'KB = 4689'RKB) (RKB)  
 Scale: True distance  
 Rig (4664'GL+25'KB = 4689'RKB) (RKB) to Mean Sea Level: 4689 feet  
 Coordinates are in feet referenced to Slot  
 Mean Sea Level to Ground level (At Slot: SLOT#06 CAPITOL 06N (241'FSL & 2348'FWL,SEC.36)): 0 feet  
 Depths are in feet  
 Offset wellpath MDs are referenced to each path's default MD datum  
 Created by: guenaler on 2025-06-20; Database: WA, Denver

## Location Information

Facility Name		Grid East (US ft)	Grid North (US ft)	Latitude	Longitude	
SEC.36-T05N-R66W		3215510.944	1371026.935	40°20'57.4472"N	104°43'36.3718"W	
Slot	Local N (ft)	Local E (ft)	Grid East (US ft)	Grid North (US ft)	Latitude	Longitude
SLOT#06 CAPITOL 06N (241'FSL & 2348'FWL,SEC.36)	-68.97	29.28	3215540.224	1370957.972	40°20'56.7632"N	104°43'36.0012"W
Rig (4664'GL+25'KB = 4689'RKB) (RKB) to Ground level (At Slot: SLOT#06 CAPITOL 06N (241'FSL & 2348'FWL,SEC.36))				4689ft		
Mean Sea Level to Ground level (At Slot: SLOT#06 CAPITOL 06N (241'FSL & 2348'FWL,SEC.36))				0ft		
Rig (4664'GL+25'KB = 4689'RKB) (RKB) to Mean Sea Level				4689ft		

## Well Profile Data

Design Comment	MD (ft)	Inc (°)	Az (°)	TVD (ft)	Local N (ft)	Local E (ft)	DLS (°/100ft)	VS (ft)
SHL	25.00	0.000	217.789	25.00	0.00	0.00	0.00	0.00
End of Tangent	300.00	0.000	217.789	300.00	0.00	0.00	0.00	0.00
Build (XS)	718.57	8.371	217.789	717.09	-24.12	-18.70	2.00	-22.70
KOP	6405.73	8.371	217.789	6343.65	-678.47	-526.06	0.00	-638.49
LP	7478.56	90.000	359.423	7050.00	-46.69	-596.94	9.00	-3.24
BHL	17051.91	90.000	359.423	7050.00	9526.17	-693.29	0.00	9551.36



HDGM2024v1.0 (1900.0 to 2025.0) Dip: 66.52° Field: 51611.2 nT  
 Magnetic North is 7.67 degrees East of True North (at 8/22/2024)  
 Grid North is 0.50 degrees East of True North  
 To correct azimuth from True to Grid subtract 0.50 degrees  
 To correct azimuth from Magnetic to Grid add 7.17 degrees



# Planned Wellpath Report

CAPITOL 06N (REV-E.0) PWP

Page 1 of 9



## REFERENCE WELLPATH IDENTIFICATION

Operator	PDC ENERGY INC	Well	CAPITOL 06N
Field	WELD COUNTY (NAD83/GRID)	API/Legal	
Facility	SEC.36-T05N-R66W	Wellbore	CAPITOL 06N PWB
Slot	SLOT#06 CAPITOL 06N (241'FSL & 2348'FWL,SEC.36)		

## REPORT SETUP INFORMATION

Projection System	NAD83 / Lambert Colorado SP, Northern Zone (501), US feet	Software System	WellArchitect® 6.0
North Reference	Grid	User	Guenaler
Scale	0.999958	Report Generated	6/20/2025 at 2:52:15 PM
Convergence at slot	0.50° East	Database	WA_Denver

## WELLPATH LOCATION

	Local coordinates		Grid coordinates		Geographic coordinates	
	North[ft]	East[ft]	Easting[US ft]	Northing[US ft]	Latitude	Longitude
Slot Location	-68.97	29.28	3215540.22	1370957.97	40.3491009°	-104.7266670°
Facility Reference Pt			3215510.94	1371026.94	40.3492909°	-104.7267699°
Field Reference Pt			3296400.32	1413291.61	40.4630000°	-104.4347500°

## WELLPATH DATUM

Calculation method	Minimum curvature	Rig (4664'GL+25'KB = 4689'RKB) (RKB) to Facility Vertical Datum	4689.00ft
Horizontal Reference Pt	Slot	Rig (4664'GL+25'KB = 4689'RKB) (RKB) to Mean Sea Level	4689.00ft
Vertical Reference Pt	Rig (4664'GL+25'KB = 4689'RKB) (RKB)	Rig (4664'GL+25'KB = 4689'RKB) (RKB) to Ground Level at Slot (SLOT#06 CAPITOL 06N (241'FSL & 2348'FWL,SEC.36))	4689.00ft
MD Reference Pt	Rig (4664'GL+25'KB = 4689'RKB) (RKB)	Section Origin	N 0.00, E 0.00 ft
Field Vertical Reference	Mean Sea Level	Section Azimuth	355.84°



# Planned Wellpath Report

CAPITOL 06N (REV-E.0) PWP

Page 2 of 9



## REFERENCE WELLPATH IDENTIFICATION

Operator	PDC ENERGY INC	Well	CAPITOL 06N
Field	WELD COUNTY (NAD83/GRID)	API/Legal	
Facility	SEC.36-T05N-R66W	Wellbore	CAPITOL 06N PWB
Slot	SLOT#06 CAPITOL 06N (241'FSL & 2348'FWL,SEC.36)		

## WELLPATH DATA (191 stations) † = interpolated, ‡ = extrapolated station

MD [ft]	Inclination [°]	Azimuth [°]	TVD [ft]	Vert Sect [ft]	North [ft]	East [ft]	Latitude	Longitude	DLS [°/100ft]	Comments
0.00†	0.000	217.789	0.00	0.00	0.00	0.00	40.3491009	-104.7266670	0.00	
25.00	0.000	217.789	25.00	0.00	0.00	0.00	40.3491009	-104.7266670	0.00	SHL
125.00†	0.000	217.789	125.00	0.00	0.00	0.00	40.3491009	-104.7266670	0.00	
225.00†	0.000	217.789	225.00	0.00	0.00	0.00	40.3491009	-104.7266670	0.00	
300.00	0.000	217.789	300.00	0.00	0.00	0.00	40.3491009	-104.7266670	0.00	End of Tangent
325.00†	0.500	217.789	325.00	-0.08	-0.09	-0.07	40.3491007	-104.7266672	2.00	
425.00†	2.500	217.789	424.96	-2.03	-2.15	-1.67	40.3490950	-104.7266731	2.00	
525.00†	4.500	217.789	524.77	-6.57	-6.98	-5.41	40.3490819	-104.7266866	2.00	
625.00†	6.500	217.789	624.30	-13.70	-14.55	-11.28	40.3490612	-104.7267079	2.00	
718.57	8.371	217.789	717.09	-22.70	-24.12	-18.70	40.3490351	-104.7267349	2.00	Build (XS)
725.00†	8.371	217.789	723.44	-23.40	-24.86	-19.28	40.3490331	-104.7267369	0.00	
825.00†	8.371	217.789	822.38	-34.23	-36.37	-28.20	40.3490017	-104.7267693	0.00	
925.00†	8.371	217.789	921.31	-45.05	-47.87	-37.12	40.3489704	-104.7268017	0.00	
1025.00†	8.371	217.789	1020.25	-55.88	-59.38	-46.04	40.3489390	-104.7268340	0.00	
1125.00†	8.371	217.789	1119.18	-66.71	-70.88	-54.96	40.3489076	-104.7268664	0.00	
1225.00†	8.371	217.789	1218.12	-77.54	-82.39	-63.88	40.3488763	-104.7268988	0.00	
1325.00†	8.371	217.789	1317.05	-88.36	-93.90	-72.80	40.3488449	-104.7269311	0.00	
1336.07†	8.371	217.789	1328.00	-89.56	-95.17	-73.79	40.3488414	-104.7269347	0.00	PIERRE_(UPPER)_AQUIFER_BASE
1425.00†	8.371	217.789	1415.99	-99.19	-105.40	-81.72	40.3488135	-104.7269635	0.00	
1525.00†	8.371	217.789	1514.92	-110.02	-116.91	-90.65	40.3487822	-104.7269959	0.00	
1625.00†	8.371	217.789	1613.85	-120.85	-128.41	-99.57	40.3487508	-104.7270282	0.00	
1725.00†	8.371	217.789	1712.79	-131.68	-139.92	-108.49	40.3487194	-104.7270606	0.00	
1825.00†	8.371	217.789	1811.72	-142.50	-151.42	-117.41	40.3486881	-104.7270929	0.00	
1925.00†	8.371	217.789	1910.66	-153.33	-162.93	-126.33	40.3486567	-104.7271253	0.00	
2025.00†	8.371	217.789	2009.59	-164.16	-174.44	-135.25	40.3486253	-104.7271577	0.00	
2125.00†	8.371	217.789	2108.53	-174.99	-185.94	-144.17	40.3485940	-104.7271900	0.00	
2225.00†	8.371	217.789	2207.46	-185.81	-197.45	-153.09	40.3485626	-104.7272224	0.00	
2306.41†	8.371	217.789	2288.00	-194.63	-206.81	-160.36	40.3485371	-104.7272487	0.00	PIERRE_MBR_A_SD_TOP
2325.00†	8.371	217.789	2306.40	-196.64	-208.95	-162.01	40.3485312	-104.7272548	0.00	
2425.00†	8.371	217.789	2405.33	-207.47	-220.46	-170.94	40.3484999	-104.7272871	0.00	



# Planned Wellpath Report

CAPITOL 06N (REV-E.0) PWP

Page 3 of 9



## REFERENCE WELLPATH IDENTIFICATION

Operator	PDC ENERGY INC	Well	CAPITOL 06N
Field	WELD COUNTY (NAD83/GRID)	API/Legal	
Facility	SEC.36-T05N-R66W	Wellbore	CAPITOL 06N PWB
Slot	SLOT#06 CAPITOL 06N (241'FSL & 2348'FWL,SEC.36)		

## WELLPATH DATA (191 stations) † = interpolated, ‡ = extrapolated station

MD [ft]	Inclination [°]	Azimuth [°]	TVD [ft]	Vert Sect [ft]	North [ft]	East [ft]	Latitude	Longitude	DLS [°/100ft]	Comments
2525.00†	8.371	217.789	2504.26	-218.30	-231.96	-179.86	40.3484685	-104.7273195	0.00	
2625.00†	8.371	217.789	2603.20	-229.12	-243.47	-188.78	40.3484371	-104.7273519	0.00	
2725.00†	8.371	217.789	2702.13	-239.95	-254.98	-197.70	40.3484058	-104.7273842	0.00	
2825.00†	8.371	217.789	2801.07	-250.78	-266.48	-206.62	40.3483744	-104.7274166	0.00	
2841.10†	8.371	217.789	2817.00	-252.52	-268.33	-208.06	40.3483693	-104.7274218	0.00	PIERRE_MBR_A_SD_BASE
2925.00†	8.371	217.789	2900.00	-261.61	-277.99	-215.54	40.3483430	-104.7274490	0.00	
3025.00†	8.371	217.789	2998.94	-272.44	-289.49	-224.46	40.3483117	-104.7274813	0.00	
3125.00†	8.371	217.789	3097.87	-283.26	-301.00	-233.38	40.3482803	-104.7275137	0.00	
3225.00†	8.371	217.789	3196.81	-294.09	-312.50	-242.30	40.3482489	-104.7275460	0.00	
3325.00†	8.371	217.789	3295.74	-304.92	-324.01	-251.23	40.3482176	-104.7275784	0.00	
3425.00†	8.371	217.789	3394.68	-315.75	-335.52	-260.15	40.3481862	-104.7276108	0.00	
3525.00†	8.371	217.789	3493.61	-326.57	-347.02	-269.07	40.3481548	-104.7276431	0.00	
3625.00†	8.371	217.789	3592.54	-337.40	-358.53	-277.99	40.3481234	-104.7276755	0.00	
3661.85†	8.371	217.789	3629.00	-341.39	-362.77	-281.28	40.3481119	-104.7276874	0.00	PARKMAN
3725.00†	8.371	217.789	3691.48	-348.23	-370.03	-286.91	40.3480921	-104.7277079	0.00	
3825.00†	8.371	217.789	3790.41	-359.06	-381.54	-295.83	40.3480607	-104.7277402	0.00	
3925.00†	8.371	217.789	3889.35	-369.89	-393.04	-304.75	40.3480293	-104.7277726	0.00	
4025.00†	8.371	217.789	3988.28	-380.71	-404.55	-313.67	40.3479980	-104.7278050	0.00	
4125.00†	8.371	217.789	4087.22	-391.54	-416.05	-322.59	40.3479666	-104.7278373	0.00	
4128.82†	8.371	217.789	4091.00	-391.96	-416.49	-322.94	40.3479654	-104.7278386	0.00	SUSSEX
4225.00†	8.371	217.789	4186.15	-402.37	-427.56	-331.51	40.3479352	-104.7278697	0.00	
4325.00†	8.371	217.789	4285.09	-413.20	-439.07	-340.44	40.3479039	-104.7279020	0.00	
4425.00†	8.371	217.789	4384.02	-424.02	-450.57	-349.36	40.3478725	-104.7279344	0.00	
4525.00†	8.371	217.789	4482.95	-434.85	-462.08	-358.28	40.3478411	-104.7279668	0.00	
4625.00†	8.371	217.789	4581.89	-445.68	-473.58	-367.20	40.3478098	-104.7279991	0.00	
4725.00†	8.371	217.789	4680.82	-456.51	-485.09	-376.12	40.3477784	-104.7280315	0.00	
4825.00†	8.371	217.789	4779.76	-467.34	-496.59	-385.04	40.3477470	-104.7280639	0.00	
4828.28†	8.371	217.789	4783.00	-467.69	-496.97	-385.33	40.3477460	-104.7280649	0.00	SHANNON
4925.00†	8.371	217.789	4878.69	-478.16	-508.10	-393.96	40.3477157	-104.7280962	0.00	
5025.00†	8.371	217.789	4977.63	-488.99	-519.61	-402.88	40.3476843	-104.7281286	0.00	



# Planned Wellpath Report

CAPITOL 06N (REV-E.0) PWP

Page 4 of 9



## REFERENCE WELLPATH IDENTIFICATION

Operator	PDC ENERGY INC	Well	CAPITOL 06N
Field	WELD COUNTY (NAD83/GRID)	API/Legal	
Facility	SEC.36-T05N-R66W	Wellbore	CAPITOL 06N PWB
Slot	SLOT#06 CAPITOL 06N (241'FSL & 2348'FWL,SEC.36)		

## WELLPATH DATA (191 stations) † = interpolated, ‡ = extrapolated station

MD [ft]	Inclination [°]	Azimuth [°]	TVD [ft]	Vert Sect [ft]	North [ft]	East [ft]	Latitude	Longitude	DLS [°/100ft]	Comments
5125.00†	8.371	217.789	5076.56	-499.82	-531.11	-411.80	40.3476529	-104.7281610	0.00	
5225.00†	8.371	217.789	5175.50	-510.65	-542.62	-420.73	40.3476216	-104.7281933	0.00	
5325.00†	8.371	217.789	5274.43	-521.47	-554.12	-429.65	40.3475902	-104.7282257	0.00	
5425.00†	8.371	217.789	5373.37	-532.30	-565.63	-438.57	40.3475588	-104.7282580	0.00	
5525.00†	8.371	217.789	5472.30	-543.13	-577.13	-447.49	40.3475275	-104.7282904	0.00	
5625.00†	8.371	217.789	5571.23	-553.96	-588.64	-456.41	40.3474961	-104.7283228	0.00	
5725.00†	8.371	217.789	5670.17	-564.79	-600.15	-465.33	40.3474647	-104.7283551	0.00	
5825.00†	8.371	217.789	5769.10	-575.61	-611.65	-474.25	40.3474334	-104.7283875	0.00	
5925.00†	8.371	217.789	5868.04	-586.44	-623.16	-483.17	40.3474020	-104.7284199	0.00	
6025.00†	8.371	217.789	5966.97	-597.27	-634.66	-492.09	40.3473706	-104.7284522	0.00	
6100.84†	8.371	217.789	6042.00	-605.48	-643.39	-498.86	40.3473468	-104.7284768	0.00	TEPEE BUTTES
6125.00†	8.371	217.789	6065.91	-608.10	-646.17	-501.02	40.3473393	-104.7284846	0.00	
6225.00†	8.371	217.789	6164.84	-618.92	-657.67	-509.94	40.3473079	-104.7285169	0.00	
6325.00†	8.371	217.789	6263.78	-629.75	-669.18	-518.86	40.3472765	-104.7285493	0.00	
6405.73	8.371	217.789	6343.65	-638.49	-678.47	-526.06	40.3472512	-104.7285754	0.00	KOP
6425.00†	7.100	226.587	6362.74	-640.29	-680.39	-527.78	40.3472459	-104.7285817	9.00	
6525.00†	6.682	308.200	6462.22	-640.28	-681.05	-536.86	40.3472444	-104.7286143	9.00	
6625.00†	14.158	338.195	6560.57	-624.67	-666.06	-546.00	40.3472857	-104.7286466	9.00	
6725.00†	22.755	346.846	6655.35	-593.85	-635.81	-554.96	40.3473690	-104.7286778	9.00	
6825.00†	31.570	350.875	6744.24	-548.58	-591.04	-563.53	40.3474921	-104.7287071	9.00	
6896.55†	37.925	352.692	6803.00	-507.93	-550.70	-569.30	40.3476029	-104.7287266	9.00	SHARON SPRINGS
6925.00†	40.460	353.275	6825.05	-489.97	-532.86	-571.50	40.3476520	-104.7287339	9.00	
6940.87†	41.875	353.575	6837.00	-479.53	-522.48	-572.69	40.3476805	-104.7287379	9.00	NIO_A_CHALK
6971.07†	44.568	354.103	6859.00	-458.87	-501.92	-574.91	40.3477369	-104.7287452	9.00	NIO_A_MARL
7025.00†	49.384	354.931	6895.79	-419.46	-462.68	-578.67	40.3478447	-104.7287574	9.00	
7125.00†	58.327	356.193	6954.71	-338.79	-382.25	-584.86	40.3480657	-104.7287771	9.00	
7129.38†	58.718	356.242	6957.00	-335.06	-378.53	-585.10	40.3480759	-104.7287779	9.00	NIO_B_CHALK
7178.78†	63.141	356.772	6981.00	-291.89	-335.44	-587.73	40.3481942	-104.7287860	9.00	NIO_B_MARL
7225.00†	67.279	357.231	7000.37	-249.95	-293.55	-589.92	40.3483093	-104.7287925	9.00	
7318.23†	75.631	358.083	7030.00	-161.69	-205.31	-593.52	40.3485515	-104.7288027	9.00	NIO_C_CHALK



# Planned Wellpath Report

CAPITOL 06N (REV-E.0) PWP

Page 5 of 9



## REFERENCE WELLPATH IDENTIFICATION

Operator	PDC ENERGY INC	Well	CAPITOL 06N
Field	WELD COUNTY (NAD83/GRID)	API/Legal	
Facility	SEC.36-T05N-R66W	Wellbore	CAPITOL 06N PWB
Slot	SLOT#06 CAPITOL 06N (241'FSL & 2348'FWL,SEC.36)		

## WELLPATH DATA (191 stations) † = interpolated, ‡ = extrapolated station

MD [ft]	Inclination [°]	Azimuth [°]	TVD [ft]	Vert Sect [ft]	North [ft]	East [ft]	Latitude	Longitude	DLS [°/100ft]	Comments
7325.00†	76.238	358.141	7031.64	-155.13	-198.75	-593.73	40.3485696	-104.7288032	9.00	
7398.56†	82.829	358.765	7045.00	-82.91	-126.48	-595.68	40.3487680	-104.7288080	9.00	NIO_C_MARL
7425.00†	85.199	358.984	7047.76	-56.65	-100.19	-596.20	40.3488401	-104.7288090	9.00	
7478.56	90.000	359.423	7050.00†	-3.24	-46.69	-596.94	40.3489870	-104.7288100	9.00	LP
7525.00†	90.000	359.423	7050.00	43.11	-0.26	-597.41	40.3491145	-104.7288102	0.00	
7625.00†	90.000	359.423	7050.00	142.91	99.74	-598.41	40.3493890	-104.7288107	0.00	
7725.00†	90.000	359.423	7050.00	242.71	199.73	-599.42	40.3496634	-104.7288112	0.00	
7825.00†	90.000	359.423	7050.00	342.52	299.73	-600.43	40.3499379	-104.7288117	0.00	
7925.00†	90.000	359.423	7050.00	442.32	399.72	-601.43	40.3502124	-104.7288122	0.00	
8025.00†	90.000	359.423	7050.00	542.13	499.72	-602.44	40.3504869	-104.7288127	0.00	
8125.00†	90.000	359.423	7050.00	641.93	599.71	-603.44	40.3507614	-104.7288132	0.00	
8225.00†	90.000	359.423	7050.00	741.74	699.71	-604.45	40.3510359	-104.7288137	0.00	
8325.00†	90.000	359.423	7050.00	841.54	799.70	-605.46	40.3513104	-104.7288142	0.00	
8425.00†	90.000	359.423	7050.00	941.34	899.70	-606.46	40.3515849	-104.7288146	0.00	
8525.00†	90.000	359.423	7050.00	1041.15	999.69	-607.47	40.3518594	-104.7288151	0.00	
8625.00†	90.000	359.423	7050.00	1140.95	1099.69	-608.48	40.3521339	-104.7288156	0.00	
8725.00†	90.000	359.423	7050.00	1240.76	1199.68	-609.48	40.3524084	-104.7288161	0.00	
8825.00†	90.000	359.423	7050.00	1340.56	1299.68	-610.49	40.3526829	-104.7288166	0.00	
8925.00†	90.000	359.423	7050.00	1440.37	1399.67	-611.50	40.3529574	-104.7288171	0.00	
9025.00†	90.000	359.423	7050.00	1540.17	1499.67	-612.50	40.3532318	-104.7288176	0.00	
9125.00†	90.000	359.423	7050.00	1639.97	1599.66	-613.51	40.3535063	-104.7288181	0.00	
9225.00†	90.000	359.423	7050.00	1739.78	1699.66	-614.52	40.3537808	-104.7288186	0.00	
9325.00†	90.000	359.423	7050.00	1839.58	1799.65	-615.52	40.3540553	-104.7288191	0.00	
9425.00†	90.000	359.423	7050.00	1939.39	1899.65	-616.53	40.3543298	-104.7288196	0.00	
9525.00†	90.000	359.423	7050.00	2039.19	1999.64	-617.53	40.3546043	-104.7288200	0.00	
9625.00†	90.000	359.423	7050.00	2138.99	2099.64	-618.54	40.3548788	-104.7288205	0.00	
9725.00†	90.000	359.423	7050.00	2238.80	2199.63	-619.55	40.3551533	-104.7288210	0.00	
9825.00†	90.000	359.423	7050.00	2338.60	2299.63	-620.55	40.3554278	-104.7288215	0.00	
9925.00†	90.000	359.423	7050.00	2438.41	2399.62	-621.56	40.3557023	-104.7288220	0.00	
10025.00†	90.000	359.423	7050.00	2538.21	2499.62	-622.57	40.3559768	-104.7288225	0.00	



# Planned Wellpath Report

CAPITOL 06N (REV-E.0) PWP

Page 6 of 9



## REFERENCE WELLPATH IDENTIFICATION

Operator	PDC ENERGY INC	Well	CAPITOL 06N
Field	WELD COUNTY (NAD83/GRID)	API/Legal	
Facility	SEC.36-T05N-R66W	Wellbore	CAPITOL 06N PWB
Slot	SLOT#06 CAPITOL 06N (241'FSL & 2348'FWL,SEC.36)		

## WELLPATH DATA (191 stations) † = interpolated, ‡ = extrapolated station

MD [ft]	Inclination [°]	Azimuth [°]	TVD [ft]	Vert Sect [ft]	North [ft]	East [ft]	Latitude	Longitude	DLS [°/100ft]	Comments
10125.00†	90.000	359.423	7050.00	2638.02	2599.61	-623.57	40.3562513	-104.7288230	0.00	
10225.00†	90.000	359.423	7050.00	2737.82	2699.61	-624.58	40.3565257	-104.7288235	0.00	
10325.00†	90.000	359.423	7050.00	2837.62	2799.60	-625.59	40.3568002	-104.7288240	0.00	
10425.00†	90.000	359.423	7050.00	2937.43	2899.60	-626.59	40.3570747	-104.7288245	0.00	
10525.00†	90.000	359.423	7050.00	3037.23	2999.59	-627.60	40.3573492	-104.7288250	0.00	
10625.00†	90.000	359.423	7050.00	3137.04	3099.59	-628.61	40.3576237	-104.7288254	0.00	
10725.00†	90.000	359.423	7050.00	3236.84	3199.58	-629.61	40.3578982	-104.7288259	0.00	
10825.00†	90.000	359.423	7050.00	3336.65	3299.58	-630.62	40.3581727	-104.7288264	0.00	
10925.00†	90.000	359.423	7050.00	3436.45	3399.57	-631.63	40.3584472	-104.7288269	0.00	
11025.00†	90.000	359.423	7050.00	3536.25	3499.57	-632.63	40.3587217	-104.7288274	0.00	
11125.00†	90.000	359.423	7050.00	3636.06	3599.56	-633.64	40.3589962	-104.7288279	0.00	
11225.00†	90.000	359.423	7050.00	3735.86	3699.56	-634.64	40.3592707	-104.7288284	0.00	
11325.00†	90.000	359.423	7050.00	3835.67	3799.55	-635.65	40.3595452	-104.7288289	0.00	
11425.00†	90.000	359.423	7050.00	3935.47	3899.55	-636.66	40.3598196	-104.7288294	0.00	
11525.00†	90.000	359.423	7050.00	4035.28	3999.54	-637.66	40.3600941	-104.7288299	0.00	
11625.00†	90.000	359.423	7050.00	4135.08	4099.53	-638.67	40.3603686	-104.7288304	0.00	
11725.00†	90.000	359.423	7050.00	4234.88	4199.53	-639.68	40.3606431	-104.7288308	0.00	
11825.00†	90.000	359.423	7050.00	4334.69	4299.52	-640.68	40.3609176	-104.7288313	0.00	
11925.00†	90.000	359.423	7050.00	4434.49	4399.52	-641.69	40.3611921	-104.7288318	0.00	
12025.00†	90.000	359.423	7050.00	4534.30	4499.51	-642.70	40.3614666	-104.7288323	0.00	
12125.00†	90.000	359.423	7050.00	4634.10	4599.51	-643.70	40.3617411	-104.7288328	0.00	
12225.00†	90.000	359.423	7050.00	4733.90	4699.50	-644.71	40.3620156	-104.7288333	0.00	
12325.00†	90.000	359.423	7050.00	4833.71	4799.50	-645.72	40.3622901	-104.7288338	0.00	
12425.00†	90.000	359.423	7050.00	4933.51	4899.49	-646.72	40.3625646	-104.7288343	0.00	
12525.00†	90.000	359.423	7050.00	5033.32	4999.49	-647.73	40.3628390	-104.7288348	0.00	
12625.00†	90.000	359.423	7050.00	5133.12	5099.48	-648.74	40.3631135	-104.7288353	0.00	
12725.00†	90.000	359.423	7050.00	5232.93	5199.48	-649.74	40.3633880	-104.7288358	0.00	
12825.00†	90.000	359.423	7050.00	5332.73	5299.47	-650.75	40.3636625	-104.7288362	0.00	
12925.00†	90.000	359.423	7050.00	5432.53	5399.47	-651.75	40.3639370	-104.7288367	0.00	
13025.00†	90.000	359.423	7050.00	5532.34	5499.46	-652.76	40.3642115	-104.7288372	0.00	



# Planned Wellpath Report

CAPITOL 06N (REV-E.0) PWP

Page 7 of 9



## REFERENCE WELLPATH IDENTIFICATION

Operator	PDC ENERGY INC	Well	CAPITOL 06N
Field	WELD COUNTY (NAD83/GRID)	API/Legal	
Facility	SEC.36-T05N-R66W	Wellbore	CAPITOL 06N PWB
Slot	SLOT#06 CAPITOL 06N (241'FSL & 2348'FWL,SEC.36)		

## WELLPATH DATA (191 stations) † = interpolated, ‡ = extrapolated station

MD [ft]	Inclination [°]	Azimuth [°]	TVD [ft]	Vert Sect [ft]	North [ft]	East [ft]	Latitude	Longitude	DLS [°/100ft]	Comments
13125.00†	90.000	359.423	7050.00	5632.14	5599.46	-653.77	40.3644860	-104.7288377	0.00	
13225.00†	90.000	359.423	7050.00	5731.95	5699.45	-654.77	40.3647605	-104.7288382	0.00	
13325.00†	90.000	359.423	7050.00	5831.75	5799.45	-655.78	40.3650350	-104.7288387	0.00	
13425.00†	90.000	359.423	7050.00	5931.56	5899.44	-656.79	40.3653095	-104.7288392	0.00	
13525.00†	90.000	359.423	7050.00	6031.36	5999.44	-657.79	40.3655840	-104.7288397	0.00	
13625.00†	90.000	359.423	7050.00	6131.16	6099.43	-658.80	40.3658585	-104.7288402	0.00	
13725.00†	90.000	359.423	7050.00	6230.97	6199.43	-659.81	40.3661329	-104.7288407	0.00	
13825.00†	90.000	359.423	7050.00	6330.77	6299.42	-660.81	40.3664074	-104.7288412	0.00	
13925.00†	90.000	359.423	7050.00	6430.58	6399.42	-661.82	40.3666819	-104.7288416	0.00	
14025.00†	90.000	359.423	7050.00	6530.38	6499.41	-662.83	40.3669564	-104.7288421	0.00	
14125.00†	90.000	359.423	7050.00	6630.18	6599.41	-663.83	40.3672309	-104.7288426	0.00	
14225.00†	90.000	359.423	7050.00	6729.99	6699.40	-664.84	40.3675054	-104.7288431	0.00	
14325.00†	90.000	359.423	7050.00	6829.79	6799.40	-665.84	40.3677799	-104.7288436	0.00	
14425.00†	90.000	359.423	7050.00	6929.60	6899.39	-666.85	40.3680544	-104.7288441	0.00	
14525.00†	90.000	359.423	7050.00	7029.40	6999.39	-667.86	40.3683289	-104.7288446	0.00	
14625.00†	90.000	359.423	7050.00	7129.21	7099.38	-668.86	40.3686034	-104.7288451	0.00	
14725.00†	90.000	359.423	7050.00	7229.01	7199.38	-669.87	40.3688779	-104.7288456	0.00	
14825.00†	90.000	359.423	7050.00	7328.81	7299.37	-670.88	40.3691523	-104.7288461	0.00	
14925.00†	90.000	359.423	7050.00	7428.62	7399.37	-671.88	40.3694268	-104.7288466	0.00	
15025.00†	90.000	359.423	7050.00	7528.42	7499.36	-672.89	40.3697013	-104.7288470	0.00	
15125.00†	90.000	359.423	7050.00	7628.23	7599.36	-673.90	40.3699758	-104.7288475	0.00	
15225.00†	90.000	359.423	7050.00	7728.03	7699.35	-674.90	40.3702503	-104.7288480	0.00	
15325.00†	90.000	359.423	7050.00	7827.84	7799.35	-675.91	40.3705248	-104.7288485	0.00	
15425.00†	90.000	359.423	7050.00	7927.64	7899.34	-676.92	40.3707993	-104.7288490	0.00	
15525.00†	90.000	359.423	7050.00	8027.44	7999.34	-677.92	40.3710738	-104.7288495	0.00	
15625.00†	90.000	359.423	7050.00	8127.25	8099.33	-678.93	40.3713483	-104.7288500	0.00	
15725.00†	90.000	359.423	7050.00	8227.05	8199.33	-679.94	40.3716228	-104.7288505	0.00	
15825.00†	90.000	359.423	7050.00	8326.86	8299.32	-680.94	40.3718973	-104.7288510	0.00	
15925.00†	90.000	359.423	7050.00	8426.66	8399.32	-681.95	40.3721717	-104.7288515	0.00	
16025.00†	90.000	359.423	7050.00	8526.47	8499.31	-682.95	40.3724462	-104.7288520	0.00	



# Planned Wellpath Report

CAPITOL 06N (REV-E.0) PWP

Page 8 of 9



## REFERENCE WELLPATH IDENTIFICATION

Operator	PDC ENERGY INC	Well	CAPITOL 06N
Field	WELD COUNTY (NAD83/GRID)	API/Legal	
Facility	SEC.36-T05N-R66W	Wellbore	CAPITOL 06N PWB
Slot	SLOT#06 CAPITOL 06N (241'FSL & 2348'FWL,SEC.36)		

## WELLPATH DATA (191 stations) † = interpolated, ‡ = extrapolated station

MD [ft]	Inclination [°]	Azimuth [°]	TVD [ft]	Vert Sect [ft]	North [ft]	East [ft]	Latitude	Longitude	DLS [°/100ft]	Comments
16125.00†	90.000	359.423	7050.00	8626.27	8599.31	-683.96	40.3727207	-104.7288524	0.00	
16225.00†	90.000	359.423	7050.00	8726.07	8699.30	-684.97	40.3729952	-104.7288529	0.00	
16325.00†	90.000	359.423	7050.00	8825.88	8799.30	-685.97	40.3732697	-104.7288534	0.00	
16425.00†	90.000	359.423	7050.00	8925.68	8899.29	-686.98	40.3735442	-104.7288539	0.00	
16525.00†	90.000	359.423	7050.00	9025.49	8999.29	-687.99	40.3738187	-104.7288544	0.00	
16625.00†	90.000	359.423	7050.00	9125.29	9099.28	-688.99	40.3740932	-104.7288549	0.00	
16725.00†	90.000	359.423	7050.00	9225.09	9199.28	-690.00	40.3743677	-104.7288554	0.00	
16825.00†	90.000	359.423	7050.00	9324.90	9299.27	-691.01	40.3746422	-104.7288559	0.00	
16925.00†	90.000	359.423	7050.00	9424.70	9399.27	-692.01	40.3749167	-104.7288564	0.00	
17025.00†	90.000	359.423	7050.00	9524.51	9499.26	-693.02	40.3751911	-104.7288569	0.00	
17051.91	90.000	359.423	7050.00 <sup>‡</sup>	9551.36	9526.17	-693.29	40.3752650	-104.7288570	0.00	BHL

## TARGETS

Name	MD [ft]	TVD [ft]	North [ft]	East [ft]	Grid East [US ft]	Grid North [US ft]	Latitude	Longitude	Shape
Sec.01-T04N-R66W	N/A	-38.00	-3763.69	2510.14	3218050.25	1367194.45	40.3387098	-104.7177809	polygon
	2D Polygon: dimensions not calculated								
Sec.06-T04N-R65W	N/A	-38.00	-3763.69	2510.14	3218050.25	1367194.45	40.3387098	-104.7177809	polygon
	2D Polygon: dimensions not calculated								
Sec.25-T05N-R66W	N/A	-38.00	-3763.69	2510.14	3218050.25	1367194.45	40.3387098	-104.7177809	polygon
	2D Polygon: dimensions not calculated								
Sec.30-T05N-R65W	N/A	-38.00	-3763.69	2510.14	3218050.25	1367194.45	40.3387098	-104.7177809	polygon
	2D Polygon: dimensions not calculated								
Sec.31-T05N-R65W	N/A	-38.00	-3763.69	2510.14	3218050.25	1367194.45	40.3387098	-104.7177809	polygon
	2D Polygon: dimensions not calculated								
Sec.36-T05N-R66W	N/A	-38.00	-3763.69	2510.14	3218050.25	1367194.45	40.3387098	-104.7177809	polygon
	2D Polygon: dimensions not calculated								
Sec.24-T05N-R66W	N/A	-6.00	68.97	-29.28	3215510.94	1371026.94	40.3492909	-104.7267699	polygon

TARGETS									
Name	MD [ft]	TVD [ft]	North [ft]	East [ft]	Grid East [US ft]	Grid North [US ft]	Latitude	Longitude	Shape
2D Polygon: dimensions not calculated									
CAPITOL 06N BHL (150'FNL & 1681'FWL,SEC.24)	N/A	7026.00	15480.91	-753.43	3214786.82	1386438.20	40.3916110	-104.7288870	point

TARGETS									
Name	MD [ft]	TVD [ft]	North [ft]	East [ft]	Grid East [US ft]	Grid North [US ft]	Latitude	Longitude	Shape
CAPITOL 06N BPZ 200'FNL&1681'FWLSEC.24	N/A	7026.00	15430.75	-752.83	3214787.43	1386388.04	40.3914733	-104.7288864	point
CAPITOL 06N Rev-2 BHL (200'FNL & 1681'FWL,SEC.25)	N/A	7026.00	10147.29	-699.53	3214840.73	1381104.82	40.3769700	-104.7288600	point
CAPITOL 06N LP (200'FSL & 1753'FWL,SEC.36)	N/A	7035.00	-46.69	-596.94	3214943.31	1370911.28	40.3489870	-104.7288100	point
2) CAPITOL 06N BHL Rev-5 (820'FNL & 1670'FWL Sec.25)	17051.91	7050.00	9526.17	-693.29	3214846.96	1380483.72	40.3752650	-104.7288570	point
1) CAPITOL 06N LP Rev-2 (200'FSL&1753'FWL Sec.36)	7478.56	7050.00	-46.69	-596.94	3214943.31	1370911.28	40.3489870	-104.7288100	point
CAPITOL 06N Rev-3 BHL (200'FNL & 1681'FWL,SEC.25)	N/A	7050.00	10147.29	-699.53	3214840.73	1381104.82	40.3769700	-104.7288600	point
CAPITOL 06N Rev-4 BHL (815'FNL&1670'FWL Sec.25)	N/A	7050.00	9530.76	-693.32	3214846.93	1380488.32	40.3752776	-104.7288570	point
HORII #1 No Go Zone (1500'Radius)	N/A	7099.00	11011.08	-450.71	3215089.53	1381968.57	40.3793350	-104.7279400	circle
2D Circle radius 1500.									

TARGETS									
Name	MD [ft]	TVD [ft]	North [ft]	East [ft]	Grid East [US ft]	Grid North [US ft]	Latitude	Longitude	Shape
Capitol Hardline (200'N/S&300'E/W)	N/A	7199.00	55.21	-23.39	3215516.83	1371013.18	40.3492530	-104.7267492	polygon
2D Polygon: dimensions not calculated									

SURVEY PROGRAM - Ref Wellbore: CAPITOL 06N PWB Ref Wellpath: CAPITOL 06N (REV-E.0) PWP				
Start MD [ft]	End MD [ft]	Positional Uncertainty Model	Log Name/Comment	Wellbore
25.00	1995.00	OWSG MWD rev2 - Standard		CAPITOL 06N PWB
1995.00	22992.47	OWSG MWD rev2 (MS+IFR1)		CAPITOL 06N PWB



# Planned Wellpath Report

CAPITOL 06N (REV-E.0) PWP

Page 9 of 9



## REFERENCE WELLPATH IDENTIFICATION

Operator	PDC ENERGY INC	Well	CAPITOL 06N
Field	WELD COUNTY (NAD83/GRID)	API/Legal	
Facility	SEC.36-T05N-R66W	Wellbore	CAPITOL 06N PWB
Slot	SLOT#06 CAPITOL 06N (241'FSL & 2348'FWL,SEC.36)		

## WELLPATH COMMENTS

MD [ft]	Inclination [°]	Azimuth [°]	TVD [ft]	Comment
1336.07	8.371	217.789	1328.00	PIERRE_(UPPER)_AQUIFER_BASE
2306.41	8.371	217.789	2288.00	PIERRE_MBR_A_SD_TOP
2841.10	8.371	217.789	2817.00	PIERRE_MBR_A_SD_BASE
3661.85	8.371	217.789	3629.00	PARKMAN
4128.82	8.371	217.789	4091.00	SUSSEX
4828.28	8.371	217.789	4783.00	SHANNON
6100.84	8.371	217.789	6042.00	TEPEE_BUTTES
6896.55	37.925	352.692	6803.00	SHARON SPRINGS
6940.87	41.875	353.575	6837.00	NIO_A_CHALK
6971.07	44.568	354.103	6859.00	NIO_A_MARL
7129.38	58.718	356.242	6957.00	NIO_B_CHALK
7178.78	63.141	356.772	6981.00	NIO_B_MARL
7318.23	75.631	358.083	7030.00	NIO_C_CHALK
7398.56	82.829	358.765	7045.00	NIO_C_MARL

## DESIGN COMMENTS

MD [ft]	Inclination [°]	Azimuth [°]	TVD [ft]	Comment
25.00	0.000	217.789	25.00	SHL
300.00	0.000	217.789	300.00	End of Tangent
718.57	8.371	217.789	717.09	Build (XS)
6405.73	8.371	217.789	6343.65	KOP
7478.56	90.000	359.423	7050.00	LP
17051.91	90.000	359.423	7050.00	BHL



# Closest Approach Clearance Summary Report

CAPITOL 06N (REV-E.0) PWP - SPE WPTS Stop Drilling HSE Risk (2017)  
Page 1 of 9



## REFERENCE WELLPATH IDENTIFICATION

Operator	PDC ENERGY INC	Well	CAPITOL 06N
Field	WELD COUNTY (NAD83/GRID)	API/Legal	
Facility	SEC.36-T05N-R66W	Wellbore	CAPITOL 06N PWB
Slot	SLOT#06 CAPITOL 06N (241'FSL & 2348'FWL,SEC.36)		

## REPORT SETUP INFORMATION

Projection System	NAD83 / Lambert Colorado SP, Northern Zone (501), US feet	Software System	WellArchitect® 6.0
North Reference	Grid	User	Guenaler
Scale	0.999958	Report Generated	6/20/2025 at 3:05:36 PM
Convergence at slot	0.50° East	Database	WA_Denver

## WELLPATH LOCATION

	Local coordinates		Grid coordinates		Geographic coordinates	
	North[ft]	East[ft]	Easting[US ft]	Northing[US ft]	Latitude	Longitude
Slot Location	-68.97	29.28	3215540.22	1370957.97	40.3491009°	-104.7266670°
Facility Reference Pt			3215510.94	1371026.94	40.3492909°	-104.7267699°
Field Reference Pt			3296400.32	1413291.61	40.4630000°	-104.4347500°

## WELLPATH DATUM

Calculation method	Minimum Curvature	Rig (4664'GL+25'KB = 4689'RKB) (RKB) to Facility Vertical Datum	4689.00ft
Horizontal Reference Pt	Slot	Rig (4664'GL+25'KB = 4689'RKB) (RKB) to Mean Sea Level	4689.00ft
Vertical Reference Pt	Rig (4664'GL+25'KB = 4689'RKB) (RKB)	Rig (4664'GL+25'KB = 4689'RKB) (RKB) to Ground Level at Slot (SLOT#06 CAPITOL 06N (241'FSL & 2348'FWL,SEC.36))	4689.00ft
MD Reference Pt	Rig (4664'GL+25'KB = 4689'RKB) (RKB)		
Field Vertical Reference	Mean Sea Level		

## POSITIONAL UNCERTAINTY CALCULATION SETTINGS

Ellipse Confidence Limit	3.50 Std Dev	Ellipse Start MD	25.00ft	Surface Position Uncertainty	included
Declination	7.67° East of TN	Dip Angle	66.52°	Mag Field Strength	51611 nT

**POSITIONAL UNCERTAINTY CALCULATION SETTINGS**

Slot Surface Uncertainty @1SD	Horizontal	<b>0.100ft</b>	Vertical	<b>1.000ft</b>
Facility Surface Uncertainty @1SD	Horizontal	<b>8.200ft</b>	Vertical	<b>3.000ft</b>

Positional Uncertainty values in the WELLPATH DATA table are the projection of the ellipsoid of uncertainty onto the vertical and horizontal planes



# Closest Approach Clearance Summary Report

CAPITOL 06N (REV-E.0) PWP - SPE WPTS Stop Drilling HSE Risk (2017)  
Page 2 of 9



REFERENCE WELLPATH IDENTIFICATION			
Operator	PDC ENERGY INC	Well	CAPITOL 06N
Field	WELD COUNTY (NAD83/GRID)	API/Legal	
Facility	SEC.36-T05N-R66W	Wellbore	CAPITOL 06N PWB
Slot	SLOT#06 CAPITOL 06N (241'FSL & 2348'FWL,SEC.36)		

PROXIMITY-SCAN RULE			
Rule Name	SPE WPTS Stop Drilling HSE Risk (2017)	Rule Based On	Ratio
Plane of Rule	Closest Approach	Threshold Value	1.00
Include Casing & Hole Size	yes	Apply Cone of Safety	no

SURVEY PROGRAM - Ref Wellbore: CAPITOL 06N PWB    Ref Wellpath: CAPITOL 06N (REV-E.0) PWP				
Start MD [ft]	End MD [ft]	Positional Uncertainty Model	Log Name/Comment	Wellbore
25.00	1995.00	OWSG MWD rev2 - Standard		CAPITOL 06N PWB
1995.00	22992.47	OWSG MWD rev2 (MS+IFR1)		CAPITOL 06N PWB



# Closest Approach Clearance Summary Report

## CAPITOL 06N (REV-E.0) PWP - SPE WPTS Stop Drilling HSE Risk (2017)

Page 3 of 9



REFERENCE WELLPATH IDENTIFICATION			
Operator	PDC ENERGY INC	Well	CAPITOL 06N
Field	WELD COUNTY (NAD83/GRID)	API/Legal	
Facility	SEC.36-T05N-R66W	Wellbore	CAPITOL 06N PWB
Slot	SLOT#06 CAPITOL 06N (241'FSL & 2348'FWL,SEC.36)		

CALCULATION RANGE & CUTOFF		
From: 25.00ft MD	To: 17051.91ft MD	C-C Cutoff: (none)

OFFSET WELL CLEARANCE SUMMARY (171 Offset Wellpaths selected) Ratios are calculated in Closest Approach plane													
Offset Facility	Offset Slot	Offset Well	Offset Wellbore	Offset Wellpath	Wellbore Status	C-C Clearance Distance			Rule Separation Ratio				
						Ref MD [ft]	Min C-C Clear Dist [ft]	Diverging from MD [ft]	Ref MD of Min Ratio [ft]	Min Ratio	Min Ratio Dvrg from [ft]	Rule Status	
Blackburn Offsets	(STATE-ELK 1) (05-123-12916)	STATE-ELK 1	STATE-ELK 1	OWB\OWB	Abandoned	10765.51	152.20	10765.51	10765.51	0.02	10765.51	FAIL	
Blackburn Offsets	(HILL STATE 18-36) (05-123-22263)	HILL STATE 18-36	HILL STATE 18-36	OWB\OWB	Abandoned	11239.64	228.95	11239.64	11239.64	0.03	11239.64	FAIL	
Blackburn Offsets	(ANDERSON-COOMBS 1) (05-123-11649)	ANDERSON-COOMBS 1	ANDERSON-COOMBS 1	OWB\OWB	Abandoned	14637.96	277.30	14637.96	14637.96	0.03	14637.96	FAIL	
Blackburn Offsets	(ANDERSON COOMBS 6) (05-123-12852)	ANDERSON COOMBS 6	ANDERSON COOMBS 6	OWB\OWB	Abandoned	17051.91	1056.23	17051.91	17051.91	0.12	17051.91	FAIL	
Blackburn Offsets	(PEPPLER 3-36) (05-123-13289)	PEPPLER 3-36	PEPPLER 3-36	OWB\OWB	Suspended	10257.36	1200.19	10257.36	10257.36	0.14	10257.36	FAIL	
Blackburn Offsets	(CURTIS UNIT 1) (05-123-11914)	CURTIS UNIT 1	CURTIS UNIT 1	OWB\OWB	Abandoned	13191.70	1615.73	13191.70	13191.73	0.19	13191.73	FAIL	
Blackburn Offsets	(ISHIGURO 5) (05-123-12892)	ISHIGURO 5	ISHIGURO 5	OWB\OWB	Abandoned	10781.55	1790.95	10781.55	10781.58	0.21	10781.58	FAIL	
Blackburn Offsets	(REEVE, FREEDA 2-1) (05-123-14918)	REEVE, FREEDA 2-1	REEVE, FREEDA 2-1	OWB\OWB	Abandoned	25.00	1526.51	300.00	6962.51	0.22	6962.51	FAIL	
Blackburn Offsets	(CUNNINGHAM UNIT 1) (05-123-11835)	CUNNINGHAM UNIT 1	CUNNINGHAM UNIT 1	OWB\OWB	Abandoned	14488.99	4245.12	14488.99	14489.33	0.49	14489.33	FAIL	
Blackburn Offsets	(VAUGHAN 12-30) (05-123-12596)	VAUGHAN 12-30	VAUGHAN 12-30	OWB\OWB	Abandoned	15682.26	4488.51	15682.26	15682.71	0.52	15682.71	FAIL	
Blackburn Offsets	(GEMINI K 1-14) (05-123-13870)	GEMINI K 1-14	GEMINI K 1-14	OWB\OWB	Abandoned	6475.14	4244.55	6475.14	6838.19	0.52	6838.19	FAIL	
Blackburn Offsets	(NOE 1-30) (05-123-13288)	NOE 1-30	NOE 1-30	OWB\OWB	Abandoned	13069.65	4544.10	13069.65	13069.96	0.53	13069.96	FAIL	
Blackburn Offsets	(GEMINI K FEDERAL 1-16) (05-123-13872)	GEMINI K FEDERAL 1-16	GEMINI K FEDERAL 1-16	OWB\OWB	Abandoned	6425.00	4929.91	6425.00	6918.44	0.61	6918.44	FAIL	
				OWB\OWB	Suspended	6423.69	4963.87	6423.69	6953.57	0.61	6953.57	FAIL	

<b>OFFSET WELL CLEARANCE SUMMARY</b> (171 Offset Wellpaths selected) Ratios are calculated in Closest Approach plane													
Offset Facility	Offset Slot	Offset Well	Offset Wellbore	Offset Wellpath	Wellbore Status	C-C Clearance Distance			Rule Separation Ratio				
						Ref MD [ft]	Min C-C Clear Dist [ft]	Diverging from MD [ft]	Ref MD of Min Ratio [ft]	Min Ratio	Min Ratio Dvrg from [ft]	Rule Status	
Blackburn Offsets	(GEMINI G FEDERAL 6-33) (05-123-30688)	GEMINI G FEDERAL 6-33	GEMINI G FEDERAL 6-33										
Blackburn Offsets	(STENZEL 1 - 31) (05-123-13295)	STENZEL 1 - 31	STENZEL 1 - 31	OWB\OWB	Abandoned	12123.64	5389.33	12123.64	12124.02	0.63	12124.02	FAIL	
Blackburn Offsets	(SYLVESTER 31-6H5) (05-123-18190)	SYLVESTER 31-6H5	SYLVESTER 31-6H5	OWB\OWB	Abandoned	10683.59	5647.42	10683.59	10683.89	0.65	10683.89	FAIL	
SEC.24-T5N-R66W	SLOT#12 HORII #1 (05-123-11135) PA	HORII #1	HORII #1 AWB	HORII #1 AWP	Abandoned	17051.91	1504.60	17051.91	17051.91	0.69	17051.91	FAIL	
SEC.24-T5N-R66W	SLOT#10 DUELL #1 (05-123-11750) PA	DUELL #1	DUELL #1 AWB	DUELL #1 AWP	Abandoned	17051.91	2208.63	17051.91	17051.91	1.02	17051.91	WARN	
Blackburn Offsets	(GOODNER 6-1) (05-123-13912)	GOODNER 6-1	GOODNER 6-1	OWB\OWB	Abandoned	25.00	8435.03	300.00	7291.38	1.03	7291.38	WARN	
SEC.24-T5N-R66W	SLOT#13 HORII #2 (05-123-11748) PA	HORII #2	HORII #2 AWB	HORII #2 AWP	Abandoned	17051.91	2817.06	17051.91	17051.91	1.29	17051.91	PASS	
Blackburn Offsets	(SYLVESTER 36-16H6) (05-123-18113)	SYLVESTER 36-16H6	SYLVESTER 36-16H6	SYLVESTER 36-16H6 AWP	Producing / injecting	25.00	2349.91	8044.88	8044.88	1.34	8044.88	PASS	
Blackburn Offsets	(SYLVESTER 36-9H6) (05-123-12507)	SYLVESTER 36-9H6	SYLVESTER 36-9H6	SYLVESTER 36-9H6 AWP	Producing / injecting	25.00	2762.58	9057.62	9057.62	1.35	9057.62	PASS	
SEC.36-T05N-R66W	SLOT#05 CAPITOL 05N (254'FSL & 2342'FWL,SEC.36)	CAPITOL 05N	CAPITOL 05N PWB	CAPITOL 05N (REV-E.0) PWP	Planned	308.36	14.94	17051.91	17051.91	1.51	17051.91	PASS	
SEC.36-T05N-R66W	SLOT#07 CAPITOL 07N (227'FSL & 2355'FWL,SEC.36)	CAPITOL 07N	CAPITOL 07N PWB	CAPITOL 07N (REV-E.0) PWP	Planned	25.00	15.01	17031.28	17031.28	1.54	17031.28	PASS	
Blackburn Offsets	(ANDERSON-COOMBS 2) (05-123-12848)	ANDERSON-COOMBS 2	ANDERSON-COOMBS 2	OWB\OWB	Abandoned	15926.97	247.98	15926.97	15926.44	1.78	15926.44	PASS	



# Closest Approach Clearance Summary Report

## CAPITOL 06N (REV-E.0) PWP - SPE WPTS Stop Drilling HSE Risk (2017)

Page 4 of 9



REFERENCE WELLPATH IDENTIFICATION			
Operator	PDC ENERGY INC	Well	CAPITOL 06N
Field	WELD COUNTY (NAD83/GRID)	API/Legal	
Facility	SEC.36-T05N-R66W	Wellbore	CAPITOL 06N PWB
Slot	SLOT#06 CAPITOL 06N (241'FSL & 2348'FWL,SEC.36)		

CALCULATION RANGE & CUTOFF		
From: 25.00ft MD	To: 17051.91ft MD	C-C Cutoff: (none)

OFFSET WELL CLEARANCE SUMMARY (171 Offset Wellpaths selected) Ratios are calculated in Closest Approach plane												
Offset Facility	Offset Slot	Offset Well	Offset Wellbore	Offset Wellpath	Wellbore Status	C-C Clearance Distance			Rule Separation Ratio			
						Ref MD [ft]	Min C-C Clear Dist [ft]	Diverging from MD [ft]	Ref MD of Min Ratio [ft]	Min Ratio	Min Ratio Dvrg from [ft]	Rule Status
Blackburn Offsets	(SYLVESTER 31-12H5) (05-123-18191)	SYLVESTER 31-12H5	SYLVESTER 31-12H5	SYLVESTER 31-12H5 AWP	Producing / injecting	25.00	4182.81	9406.67	9406.67	2.01	9406.67	PASS
SEC.24-T5N-R66W	SLOT#15 RKW #1 (05-123-10763) PA	RKW #1	RKW #1 AWB	RKW #1 AWP	Abandoned	17051.91	4405.66	17051.91	17051.91	2.02	17051.91	PASS
Blackburn Offsets	(ISHIGURO 17-36) (05-123-25592)	ISHIGURO 17-36	ISHIGURO 17-36	ISHIGURO 17-36 AWP	Producing / injecting	11498.71	2204.34	11498.71	11501.96	2.05	11501.96	PASS
SEC.24-T5N-R66W	SLOT#14 MEYER #1 (05-123-12474) PA	MEYER #1	MEYER #1 AWB	MEYER #1 AWP	Abandoned	17051.91	4749.37	17051.91	17051.91	2.17	17051.91	PASS
Blackburn Offsets	(LOEFFLER K 01-69-1HN) (05-123-37735)	LOEFFLER K 01-69-1HN	LOEFFLER K 01-69-1HN	OWB\OWB	Producing / injecting	7046.59	196.51	7046.59	7110.28	2.35	10825.00	PASS
Blackburn Offsets	(GREEN 1) (05-123-11874)	GREEN 1	GREEN 1	OWB\OWB	Abandoned	13325.95	258.77	13325.95	13324.54	2.43	13324.54	PASS
Blackburn Offsets	(ANDERSON COOMBS 3) (05-123-12849)	ANDERSON COOMBS 3	ANDERSON COOMBS 3	OWB\OWB	Abandoned	17051.91	353.10	17051.91	17051.91	2.50	17051.91	PASS
Blackburn Offsets	(MCCARTHY FEDERAL 6-33) (05-123-19040)	MCCARTHY FEDERAL 6-33	MCCARTHY FEDERAL 6-33	MCCARTHY FEDERAL 6-33 AWP	Producing / injecting	6417.37	5890.39	6417.37	7024.42	2.88	7024.42	PASS
SEC.36-T05N-R66W	SLOT#08 CAPITOL 08N (213'FSL & 2361'FWL,SEC.36)	CAPITOL 08N	CAPITOL 08N PWB	CAPITOL 08N (REV-E.0) PWP	Planned	25.00	30.02	17051.91	17051.91	3.00	17051.91	PASS
Blackburn Offsets	(MCCARTHY FEDERAL 6-35) (05-123-25323)	MCCARTHY FEDERAL 6-35	MCCARTHY FEDERAL 6-35	MCCARTHY FEDERAL 6-35 AWP	Producing / injecting	5562.83	6170.32	5562.83	7071.51	3.00	7071.51	PASS
SEC.36-T05N-R66W	SLOT#04 CAPITOL 04N (268'FSL & 2336'FWL,SEC.36)	CAPITOL 04N	CAPITOL 04N PWB	CAPITOL 04N (REV-E.0) PWP	Planned	25.00	29.95	17051.91	17051.91	3.01	17051.91	PASS
Blackburn Offsets	(ISHIGURO 2) (05-123-12900)	ISHIGURO 2	ISHIGURO 2	OWB\OWB	Abandoned	12185.52	355.42	12185.52	12188.00	3.76	12188.00	PASS
Blackburn Offsets	(BROWN 1) (05-123-12689)	BROWN 1	BROWN 1	OWB\OWB	Abandoned	9207.92	285.15	9207.92	9205.82	4.33	9205.82	PASS
		CAPITOL 03N	CAPITOL 03N PWB		Planned	300.22	44.99	17051.91	17051.91	4.51	17051.91	PASS

OFFSET WELL CLEARANCE SUMMARY (171 Offset Wellpaths selected) Ratios are calculated in Closest Approach plane													
Offset Facility	Offset Slot	Offset Well	Offset Wellbore	Offset Wellpath	Wellbore Status	C-C Clearance Distance			Rule Separation Ratio				
						Ref MD [ft]	Min C-C Clear Dist [ft]	Diverging from MD [ft]	Ref MD of Min Ratio [ft]	Min Ratio	Min Ratio Dvrg from [ft]	Rule Status	
SEC.36-T05N-R66W	SLOT#03 CAPITOL 03N (282'FSL & 2329'FWL,SEC.36)			CAPITOL 03N (REV-E.0) PWP									
Blackburn Offsets	(AD FED LIBRARY 20W-25-17) (05-123-45033)	AD FED LIBRARY 20W-25-17	AD FED LIBRARY 20W-25-17	OWB\OWB	Suspended	17051.91	1893.17	17051.91	16777.37	4.83	16777.37	PASS	
Blackburn Offsets	(AD FED DAIRY 20W-25-14) (05-123-41138)	AD FED DAIRY 20W-25-14	AD FED DAIRY 20W-25-14	OWB\OWB	Producing / injecting	17051.91	2343.28	17051.91	17051.91	4.87	17051.91	PASS	
Blackburn Offsets	(AD FED LIBRARY 20W-25-18) (05-123-45037)	AD FED LIBRARY 20W-25-18	AD FED LIBRARY 20W-25-18	OWB\OWB	Producing / injecting	17051.91	1733.56	17051.91	16471.45	4.89	16471.45	PASS	
Blackburn Offsets	(AD FED DAIRY 20W-25-16) (05-123-45937)	AD FED DAIRY 20W-25-16	AD FED DAIRY 20W-25-16	OWB\OWB	Producing / injecting	17051.91	2053.91	17051.91	16981.15	4.90	16981.15	PASS	
Blackburn Offsets	(AD FED DAIRY 20W-25-15) (05-123-41140)	AD FED DAIRY 20W-25-15	AD FED DAIRY 20W-25-15	OWB\OWB	Producing / injecting	17051.91	2149.54	17051.91	17051.91	4.92	17051.91	PASS	
Blackburn Offsets	(AD FED DAIRY 20W-25-13) (05-123-45034)	AD FED DAIRY 20W-25-13	AD FED DAIRY 20W-25-13	OWB\OWB	Producing / injecting	17051.91	2511.91	17051.91	17051.91	4.99	17051.91	PASS	
Blackburn Offsets	(AD FED DAIRY 20W-25-12) (05-123-40314)	AD FED DAIRY 20W-25-12	AD FED DAIRY 20W-25-12	OWB\OWB	Producing / injecting	17051.91	2665.58	17051.91	17051.91	5.12	17051.91	PASS	
Blackburn Offsets	(AD FED DAIRY 20W-25-11) (05-123-41146)	AD FED DAIRY 20W-25-11	AD FED DAIRY 20W-25-11	OWB\OWB	Producing / injecting	17051.91	2936.83	17051.91	17051.91	5.41	17051.91	PASS	
Blackburn Offsets	(AD FED DAIRY 20W-25-10) (05-123-45032)	AD FED DAIRY 20W-25-10	AD FED DAIRY 20W-25-10 AWB	OWB\OWB	Producing / injecting	17051.91	3059.17	17051.91	17051.91	5.57	17051.91	PASS	
SEC.36-T05N-R66W	SLOT#02 CAPITOL 02N (296'FSL & 2323'FWL,SEC.36)	CAPITOL 02N	CAPITOL 02N PWB	CAPITOL 02N (REV-E.0) PWP	Planned	300.05	59.96	17051.91	17051.91	6.06	17051.91	PASS	
Blackburn Offsets	(AD FED DOUBLE CLUTCH 20W-25-9) (05-123-45039)	AD FED DOUBLE CLUTC 20W-25-9	AD FED DOUBLE CLUTC 20W-25-9	OWB\OWB	Producing / injecting	17051.91	3446.87	17051.91	17051.91	6.07	17051.91	PASS	



# Closest Approach Clearance Summary Report

## CAPITOL 06N (REV-E.0) PWP - SPE WPTS Stop Drilling HSE Risk (2017)

Page 5 of 9



REFERENCE WELLPATH IDENTIFICATION			
Operator	PDC ENERGY INC	Well	CAPITOL 06N
Field	WELD COUNTY (NAD83/GRID)	API/Legal	
Facility	SEC.36-T05N-R66W	Wellbore	CAPITOL 06N PWB
Slot	SLOT#06 CAPITOL 06N (241'FSL & 2348'FWL,SEC.36)		

CALCULATION RANGE & CUTOFF		
From: 25.00ft MD	To: 17051.91ft MD	C-C Cutoff: (none)

OFFSET WELL CLEARANCE SUMMARY (171 Offset Wellpaths selected) Ratios are calculated in Closest Approach plane												
Offset Facility	Offset Slot	Offset Well	Offset Wellbore	Offset Wellpath	Wellbore Status	C-C Clearance Distance			Rule Separation Ratio			
						Ref MD [ft]	Min C-C Clear Dist [ft]	Diverging from MD [ft]	Ref MD of Min Ratio [ft]	Min Ratio	Min Ratio Dvrg from [ft]	Rule Status
Blackburn Offsets	(AD FED DOUBLE CLUTCH 20W-25-8) (05-123-45035)	AD FED DOUBLE CLUTCH 20W-25-8	AD FED DOUBLE CLUTC 20W-25-8	OWB\OWB	Producing / injecting	17051.91	3663.02	17051.91	17051.91	6.34	17051.91	PASS
SEC.36-T05N-R66W	SLOT#01 CAPITOL 01N (310'FSL & 2317'FWL,SEC.36)	CAPITOL 01N	CAPITOL 01N PWB	CAPITOL 01N (REV-D.0) PWP	Planned	25.00	74.92	17051.91	17051.91	7.52	17051.91	PASS
Blackburn Offsets	(CURTIS 23-25) (05-123-31134)	CURTIS 23-25	CURTIS 23-25	OWB\OWB	Producing / injecting	13994.19	915.79	13994.19	14016.23	7.52	14016.23	PASS
Blackburn Offsets	(FREEDA REEVE 4-1) (05-123-15319)	FREEDA REEVE 4-1	FREEDA REEVE 4-1	OWB\OWB	Abandoned	5676.29	435.59	5676.29	6421.35	7.88	6421.35	PASS
Blackburn Offsets	(ANDERSON COOMBS 5) (05-123-12851)	ANDERSON COOMBS 5	ANDERSON COOMBS 5	OWB\OWB	Abandoned	15978.41	1103.14	15978.41	16055.70	7.88	16055.70	PASS
Blackburn Offsets	(ANDERSON COOMBS 4) (05-123-12850)	ANDERSON COOMBS 4	ANDERSON COOMBS 4	OWB\OWB	Abandoned	14569.96	1075.04	14569.96	14665.83	8.74	14665.83	PASS
Blackburn Offsets	(REHMER 36-14H6) (05-123-18686)	REHMER 36-14H6	REHMER 36-14H6	OWB\OWB	Abandoned	314.96	516.64	8073.64	8073.64	9.37	8073.64	PASS
Blackburn Offsets	(CURTIS 36-25) (05-123-31207)	CURTIS 36-25	CURTIS 36-25	OWB\OWB	Producing / injecting	12701.16	1013.16	12701.16	12764.22	9.42	12764.22	PASS
Blackburn Offsets	(LOEFFLER K 01-68-1HN) (05-123-35836)	LOEFFLER K 01-68-1HN	LOEFFLER K 01-68-1HN	OWB\OWB	Producing / injecting	6786.77	711.87	6786.77	6868.22	10.23	6868.22	PASS
Blackburn Offsets	(WASS 4) (05-123-11757)	WASS 4	WASS 4	OWB\OWB	Abandoned	17051.91	1654.92	17051.91	17051.91	10.80	17051.91	PASS
Blackburn Offsets	(ISHIGURO 21-36) (05-123-28121)	ISHIGURO 21-36	ISHIGURO 21-36	OWB\OWB	Abandoned	11360.28	1032.28	11360.28	11432.38	11.08	11432.38	PASS
Blackburn Offsets	(ISHIGURO 25-36) (05-123-28120)	ISHIGURO 25-36	ISHIGURO 25-36	OWb\OWb	Producing / injecting	10069.56	1101.88	10069.56	10235.13	11.68	10235.13	PASS
Blackburn Offsets	STATE-HUME #90750 (05-123-12899)	STATE-HUME #90750	STATE-HUME #90750	OWB\OWB	Abandoned	11820.03	1064.38	11820.03	11925.42	11.73	11925.42	PASS
	(WASS 2) (05-123-11668)	WASS 2	WASS 2	OWB\OWB	Abandoned	15888.80	1648.01	15888.80	16005.70	11.91	16005.70	PASS

OFFSET WELL CLEARANCE SUMMARY (171 Offset Wellpaths selected) Ratios are calculated in Closest Approach plane												
Offset Facility	Offset Slot	Offset Well	Offset Wellbore	Offset Wellpath	Wellbore Status	C-C Clearance Distance			Rule Separation Ratio			
						Ref MD [ft]	Min C-C Clear Dist [ft]	Diverging from MD [ft]	Ref MD of Min Ratio [ft]	Min Ratio	Min Ratio Dvrg from [ft]	Rule Status
Blackburn Offsets												
Blackburn Offsets	(KFKA J 25-13) (05-123-19224)	KFKA J 25-13	KFKA J 25-13	OWB\OWB	Abandoned	13159.17	1396.40	13159.17	13313.00	13.14	13313.00	PASS
Blackburn Offsets	(AD FED DOUBLE CLUTCH #20W-25-7) (05-123-45036)	AD FED DOUBLE CLUTCH #20W-25-7	AD FED DOUBLE CLUTCH #20W-25-7 AWB	AD FED DOUBLE CLUTCH #20W-25-7 AWP	Producing / injecting	17051.91	3825.24	17051.91	17051.91	13.98	17051.91	PASS
Blackburn Offsets	(CURTIS 15-25) (05-123-31132)	CURTIS 15-25	CURTIS 15-25	OWB\OWB	Abandoned	13425.11	1532.52	13425.11	13552.98	14.24	13552.98	PASS
Blackburn Offsets	(WASS 3X) (05-123-13279)	WASS 3X	WASS 3X	OWB\OWB	Abandoned	14588.50	1772.99	14588.50	14744.07	14.54	14744.07	PASS
Blackburn Offsets	(AD FED DOUBLE CLUTCH #20W-25-6) (05-123-45040)	AD FED DOUBLE CLUTCH #20W-25-6	AD FED DOUBLE CLUTCH #20W-25-6 AWB	AD FED DOUBLE CLUTCH #20W-25-6 AWP	Producing / injecting	17051.91	4066.87	17051.91	17051.91	14.77	17051.91	PASS
Blackburn Offsets	(LOEFFLER K 01-67-1HN) (05-123-35835)	LOEFFLER K 01-67-1HN	LOEFFLER K 01-67-1HN	OWB\OWB	Suspended	6677.76	1318.97	6677.76	6753.91	14.87	10825.00	PASS
Blackburn Offsets	(AD FED J EVANS #20W-25-5) (05-123-45038)	AD FED J EVANS #20W-25-5	AD FED J EVANS #20W-25-5 AWB	AD FED J EVANS #20W-25-5 AWP	Producing / injecting	17051.91	4262.99	17051.91	17051.91	15.48	17051.91	PASS
Blackburn Offsets	(AD FED J EVANS #20W-25-4) (05-123-41135)	AD FED J EVANS #20W-25-4	AD FED J EVANS #20W-25-4 AWB	AD FED J EVANS #20W-25-4 AWP	Producing / injecting	17051.91	4383.35	17051.91	17051.91	15.79	17051.91	PASS
Blackburn Offsets	(AD FED J EVANS #20W-25-3) (05-123-41133)	AD FED J EVANS #20W-25-3	AD FED J EVANS #20W-25-3 AWB	AD FED J EVANS #20W-25-3 AWP	Producing / injecting	17051.91	4639.06	17051.91	17051.91	16.63	17051.91	PASS
Blackburn Offsets	(WASS 5) (05-123-13781)	WASS 5	WASS 5	OWB\OWB	Abandoned	17013.70	2661.05	17013.70	17051.91	17.39	17051.91	PASS
Blackburn Offsets	(AD FED J EVANS #20W-25-2) (05-123-45041)	AD FED J EVANS #20W-25-2	AD FED J EVANS #20W-25-2 AWB	AD FED J EVANS #20W-25-2 AWP	Producing / injecting	17051.91	4871.10	17051.91	17051.91	17.41	17051.91	PASS



# Closest Approach Clearance Summary Report

## CAPITOL 06N (REV-E.0) PWP - SPE WPTS Stop Drilling HSE Risk (2017)

Page 6 of 9



REFERENCE WELLPATH IDENTIFICATION			
Operator	PDC ENERGY INC	Well	CAPITOL 06N
Field	WELD COUNTY (NAD83/GRID)	API/Legal	
Facility	SEC.36-T05N-R66W	Wellbore	CAPITOL 06N PWB
Slot	SLOT#06 CAPITOL 06N (241'FSL & 2348'FWL,SEC.36)		

CALCULATION RANGE & CUTOFF		
From: 25.00ft MD	To: 17051.91ft MD	C-C Cutoff: (none)

OFFSET WELL CLEARANCE SUMMARY (171 Offset Wellpaths selected) Ratios are calculated in Closest Approach plane												
Offset Facility	Offset Slot	Offset Well	Offset Wellbore	Offset Wellpath	Wellbore Status	C-C Clearance Distance			Rule Separation Ratio			
						Ref MD [ft]	Min C-C Clear Dist [ft]	Diverging from MD [ft]	Ref MD of Min Ratio [ft]	Min Ratio	Min Ratio Dvrg from [ft]	Rule Status
Blackburn Offsets	(ISHIGURO 1) (05-123-11904)	ISHIGURO 1	ISHIGURO 1	OWB\OWB	Abandoned	12043.81	1634.33	12043.81	12203.72	17.47	12203.72	PASS
Blackburn Offsets	(AD FED J EVANS #20W-25-1) (05-123-41137)	AD FED J EVANS #20W-25-1	AD FED J EVANS #20W-25-1 AWB	AD FED J EVANS #20W-25-1 AWP	Producing / injecting	17051.91	4980.72	17051.91	17051.91	17.81	17051.91	PASS
Blackburn Offsets	(PEPPLER 2-36) (05-123-14438)	PEPPLER 2-36	PEPPLER 2-36	OWB\OWB	Abandoned	9227.08	1230.69	9227.08	9371.03	18.31	9371.03	PASS
Blackburn Offsets	(LOEFFLER 1-18) (05-123-11673)	LOEFFLER 1-18	LOEFFLER 1-18	OWB\OWB	Producing / injecting	6679.86	1111.28	6679.86	6746.09	20.67	6746.09	PASS
Blackburn Offsets	(LOEFFLER K 01-66-1HN ST) (05-123-35834)	LOEFFLER K 01-66-1HN ST	LOEFFLER K 01-66-1HN ST	OWB\OWB	Producing / injecting	6625.00	1950.43	6625.00	6725.00	21.06	6725.00	PASS
Blackburn Offsets	(CAVANAGH 36-10H6) (05-123-18232)	CAVANAGH 36-10H6	CAVANAGH 36-10H6	OWB\OWB	Abandoned	9241.21	1431.50	9241.21	9380.34	21.18	9380.34	PASS
Blackburn Offsets	(WASS 6) (05-123-13265)	WASS 6	WASS 6	OWB\OWB	Abandoned	15711.67	2950.88	15711.67	16125.97	21.37	16125.97	PASS
Blackburn Offsets	(PEPPLER 1-36) (05-123-13270)	PEPPLER 1-36	PEPPLER 1-36	OWB\OWB	Abandoned	7935.34	1285.93	7935.34	7993.41	21.46	7993.41	PASS
Blackburn Offsets	(GEMINI K FEDERAL 01-99HZ) (05-123-30686)	GEMINI K FEDERAL 01-99HZ	GEMINI K FEDERAL 01-99HZ	OBW\OBW	Producing / injecting	6525.00	3620.84	6525.00	6644.17	21.80	6644.17	PASS
Blackburn Offsets	(CURTIS 37-25) (05-123-31136)	CURTIS 37-25	CURTIS 37-25	OWB\OWB	Abandoned	12681.06	2275.18	12681.06	13009.91	22.48	13009.91	PASS
Blackburn Offsets	(GP J EVANS FED #20W-20-16) (05-123-41134)	GP J EVANS FED #20W-20-16	GP J EVANS FED #20W-20-16 AWB	GP J EVANS FED #20W-20-16 AWP	Producing / injecting	17051.91	5699.78	17051.91	17051.91	22.86	17051.91	PASS
Blackburn Offsets	(GP HILLSIDE FED #20W-20-15) (05-123-41145)	GP HILLSIDE FED #20W-20-15	GP HILLSIDE FED #20W-20-15 AWB	GP HILLSIDE FED #20W-20-15 AWP	Producing / injecting	17051.91	5873.60	17051.91	17051.91	23.37	17051.91	PASS
Blackburn Offsets	(LOEFFLER K 01-65HN) (05-123-37739)	LOEFFLER K 01-65HN	LOEFFLER K 01-65HN	OWB\OWB	Producing / injecting	6625.00	2185.16	6625.00	6704.31	23.51	6704.31	PASS
						17051.91	6089.48	17051.91	17051.91	24.07	17051.91	PASS

OFFSET WELL CLEARANCE SUMMARY (171 Offset Wellpaths selected) Ratios are calculated in Closest Approach plane													
Offset Facility	Offset Slot	Offset Well	Offset Wellbore	Offset Wellpath	Wellbore Status	C-C Clearance Distance			Rule Separation Ratio				
						Ref MD [ft]	Min C-C Clear Dist [ft]	Diverging from MD [ft]	Ref MD of Min Ratio [ft]	Min Ratio	Min Ratio Dvrg from [ft]	Rule Status	
Blackburn Offsets	(GP HILLSIDE FED #20W-20-14) (05-123-44430)	GP HILLSIDE FED #20W-20-14	GP HILLSIDE FED #20W-20-14 AWB	GP HILLSIDE FED #20W-20-14 AWP	Producing / injecting								
Blackburn Offsets	(WASS 1) (05-123-10976)	WASS 1	WASS 1	OWB\OWB	Abandoned	14515.78	3030.36	14515.78	15004.04	24.63	15004.04	PASS	
Blackburn Offsets	(GP-DAIRY 1-20-19) (05-123-40328)	GP-DAIRY 1-20-19	GP-DAIRY 1-20-19 ST01	GP-DAIRY 1-20-19 ST01	Producing / injecting	17051.91	5058.71	17051.91	17051.91	24.82	17051.91	PASS	
Blackburn Offsets	(GP HILLSIDE FED #20W-20-13) (05-123-41143)	GP HILLSIDE FED #20W-20-13	GP HILLSIDE FED #20W-20-13 AWB	GP HILLSIDE FED #20W-20-13 AWP	Producing / injecting	17051.91	6324.31	17051.91	17051.91	24.90	17051.91	PASS	
Blackburn Offsets	(ISHIGURO 24-36) (05-123-28119)	ISHIGURO 24-36	ISHIGURO 24-36	OWB\OWB	Abandoned	10029.03	2369.88	10029.03	10251.98	25.59	10251.98	PASS	
Blackburn Offsets	(FREEDA REEVE 3-1) (05-123-15083)	FREEDA REEVE 3-1	FREEDA REEVE 3-1	OWB\OWB	Abandoned	6488.00	1481.53	6488.00	6557.76	25.93	6557.76	PASS	
Blackburn Offsets	(REHMER 1) (05-123-12607)	REHMER 1	REHMER 1	Wellbore #1OWB\OWB	Abandoned	25.00	1186.07	8025.00	325.00	28.85	9825.00	PASS	
Blackburn Offsets	(ISHIGURO 3) (05-123-12891)	ISHIGURO 3	ISHIGURO 3	OWB\OWB	Abandoned	11912.06	2917.85	11912.06	12485.01	31.41	12485.01	PASS	
SEC.24-T5N-R66W	SLOT#11 DUELL #2 (05-123-12788) PA	DUELL #2	DUELL #2 AWB	DUELL #2 AWP	Abandoned	17051.91	3294.55	17051.91	17051.91	31.72	17051.91	PASS	
Blackburn Offsets	(ISHIGURO 30-31) (05-123-28189)	ISHIGURO 30-31	ISHIGURO 30-31	OWB\OWB	Producing / injecting	12482.54	3710.33	12482.54	13481.23	32.23	13481.23	PASS	
Blackburn Offsets	(JOHNSON X1 1-1-06) (05-123-26716)	JOHNSON X1 1-1-06	JOHNSON X1 1-1-06	OWB\OWB	Producing / injecting	6472.67	4290.64	6472.67	7198.74	34.24	7198.74	PASS	
Blackburn Offsets	(LOEFFLER K 01-66-1HN) (05-123-35834)	LOEFFLER K 01-66-1HN	LOEFFLER K 01-66-1HN	OWB\OWB	Abandoned	6525.00	2354.46	6525.00	6588.45	35.06	6588.45	PASS	



# Closest Approach Clearance Summary Report

## CAPITOL 06N (REV-E.0) PWP - SPE WPTS Stop Drilling HSE Risk (2017)

Page 7 of 9



REFERENCE WELLPATH IDENTIFICATION			
Operator	PDC ENERGY INC	Well	CAPITOL 06N
Field	WELD COUNTY (NAD83/GRID)	API/Legal	
Facility	SEC.36-T05N-R66W	Wellbore	CAPITOL 06N PWB
Slot	SLOT#06 CAPITOL 06N (241'FSL & 2348'FWL,SEC.36)		

CALCULATION RANGE & CUTOFF		
From: 25.00ft MD	To: 17051.91ft MD	C-C Cutoff: (none)

OFFSET WELL CLEARANCE SUMMARY (171 Offset Wellpaths selected) Ratios are calculated in Closest Approach plane												
Offset Facility	Offset Slot	Offset Well	Offset Wellbore	Offset Wellpath	Wellbore Status	C-C Clearance Distance			Rule Separation Ratio			
						Ref MD [ft]	Min C-C Clear Dist [ft]	Diverging from MD [ft]	Ref MD of Min Ratio [ft]	Min Ratio	Min Ratio Dvrg from [ft]	Rule Status
Blackburn Offsets	(REEVE, FREDA 1-1) (05-123-11780)	REEVE, FREDA 1-1	REEVE, FREDA 1-1	OWB\OWB	Abandoned	6419.32	2071.76	6419.32	6548.40	36.25	6548.40	PASS
Blackburn Offsets	(LOEFFLER #2-24) (05-123-11888)	LOEFFLER #2-24	LOEFFLER #2-24	OWB\OWB	Producing / injecting	6525.00	1913.65	6525.00	6604.39	36.30	6604.39	PASS
Blackburn Offsets	(COMMONS Z2 2-2-06) (05-123-26712)	COMMONS Z2 2-2-06	COMMONS Z2 2-2-06	OWB\OWB	Producing / injecting	5182.97	4934.15	5182.97	6988.03	36.63	6988.03	PASS
Blackburn Offsets	(ISHIGURO 6) (05-123-12893)	ISHIGURO 6	ISHIGURO 6	OWB\OWB	Abandoned	10668.87	2984.01	10668.87	11354.60	37.40	11354.60	PASS
Blackburn Offsets	(HAMBLLEN 1-30) (05-123-13151) - Could not confirm gyro from ECMC	HAMBLLEN 1-30	HAMBLLEN 1-30	OWB\OWB	Abandoned	15657.11	5414.41	15657.11	17051.91	37.77	17051.91	PASS
Blackburn Offsets	(SYLVESTER F 31-32D) (05-123-33215)	SYLVESTER F 31-32D	SYLVESTER F 31-32D	OWB\OWB	Producing / injecting	9855.07	3564.93	9855.07	10665.41	42.96	10665.41	PASS
SEC.24-T5N-R66W	Slot #4 SEGL #22-24 (05-123-23842) SI	SEGL 22-24	SEGL 22-24 AWB	SEGL 22-24 AWP	Drilling	17051.91	3374.88	17051.91	17051.91	43.15	17051.91	PASS
SEC.24-T5N-R66W	Slot #6 SEGL #7-24 (05-123-23840) PA	SEGL 7-24	SEGL 7-24 AWB	SEGL 7-24 AWP	Drilling	17051.91	4542.53	17051.91	17051.91	43.67	17051.91	PASS
Blackburn Offsets	(GEMINI K1-11) (05-123-15177)	GEMINI K1-11	GEMINI K1-11	OWB\OWB	Suspended	6490.61	2528.14	6490.61	6625.00	44.69	6625.00	PASS
Blackburn Offsets	(ISHIGURO 4) (05-123-12924)	ISHIGURO 4	ISHIGURO 4	OWB\OWB	Abandoned	11951.01	4316.54	11951.01	13233.61	44.72	13233.61	PASS
Blackburn Offsets	(CITY OF GREELEY 1-30) (05-123-13152) - Could not confirm gyro from ECMC	CITY OF GREELEY 1-30	CITY OF GREELEY 1-30	OWB\OWB	Abandoned	14125.00	5799.68	14125.00	15961.40	45.92	15961.40	PASS
Blackburn Offsets	(SYLVESTER 31-5H5) (05-123-18189) - Could not verify surveys	SYLVESTER 31-5H5	SYLVESTER 31-5H5	OWB\OWB	Abandoned	10565.95	4305.41	10565.95	12019.30	46.27	12019.30	PASS
Blackburn Offsets	(SYLVESTER 1-116) (05-123-18157)	SYLVESTER 1-116	SYLVESTER 1-116	OWB\OWB	Abandoned	331.32	2368.95	331.32	7419.12	47.37	7419.12	PASS
				OWB\OWB	Abandoned	13284.70	5525.22	13284.70	15095.25	47.81	15095.25	PASS

<b>OFFSET WELL CLEARANCE SUMMARY</b> (171 Offset Wellpaths selected) Ratios are calculated in Closest Approach plane													
Offset Facility	Offset Slot	Offset Well	Offset Wellbore	Offset Wellpath	Wellbore Status	C-C Clearance Distance			Rule Separation Ratio				
						Ref MD [ft]	Min C-C Clear Dist [ft]	Diverging from MD [ft]	Ref MD of Min Ratio [ft]	Min Ratio	Min Ratio Dvrg from [ft]	Rule Status	
Blackburn Offsets	(CITY OF GREELEY 2-30) (05-123-13160) - Could not confirm gyro from ECMC	CITY OF GREELEY 2-30	CITY OF GREELEY 2-30										
Blackburn Offsets	(GEMINI K1-12) (05-123-15197)	GEMINI K1-12	GEMINI K1-12	OWB\OWB	Suspended	6525.00	2715.54	6525.00	6610.41	48.17	6610.41	PASS	
Blackburn Offsets	(SANDAU X4 3-1-06) (05-123-26717)	SANDAU X4 3-1-06	SANDAU X4 3-1-06	OWB\OWB	Abandoned	777.93	5237.97	777.93	7027.10	48.67	16225.00	PASS	
Blackburn Offsets	(SYLVESTER G 06-30D) (05-123-33120)	SYLVESTER G 06-30D	SYLVESTER G 06-30D	OWB\OWB	Producing / injecting	330.69	2360.42	7125.00	7326.40	49.25	7326.40	PASS	
SEC.24-T5N-R66W	SLOT#17 S.E.G.L. #2 (05-123-12475) PA	S.E.G.L. #2	S.E.G.L. #2 AWB	S.E.G.L. #2 AWP	Abandoned	17051.91	4014.09	17051.91	17051.91	49.49	17051.91	PASS	
SEC.24-T5N-R66W	Slot #9 SEGL #17-24 (05-123-23839) PA	SEGL 17-24	SEGL 17-24 AWB	SEGL 17-24 AWP	Drilling	17051.91	5328.50	17051.91	17051.91	50.62	17051.91	PASS	
Blackburn Offsets	(EVANS INDUSTRIAL PARK 2) (05-123-16656)	EVANS INDUSTRIAL PARK 2	EVANS INDUSTRIAL PARK 2	OWB\OWB\	Abandoned	14514.18	7113.64	14514.18	17051.91	52.24	17051.91	PASS	
SEC.24-T5N-R66W	Slot #8 SEGL #21-24X (05-123-23843) PA	SEGL 21-24X	SEGL 21-24X ST AWB	SEGL 21-24X ST AWP	Drilling	17051.91	5017.13	17051.91	17051.91	53.14	17051.91	PASS	
SEC.24-T5N-R66W	SLOT#16 S.E.G.L. #1 (05-123-11776) PA	S.E.G.L. #1	S.E.G.L. #1 AWB	S.E.G.L. #1 AWP	Abandoned	17051.91	4086.96	17051.91	17051.91	54.59	17051.91	PASS	
SEC.24-T5N-R66W	Slot #8 SEGL #21-24X (05-123-23843) PA	SEGL 21-24X	SEGL 21-24X AWB	SEGL 21-24X AWP	Drilling	17051.91	4958.93	17051.91	17051.91	54.71	17051.91	PASS	
Blackburn Offsets	(SYLVESTER F 31-20D) (05-123-33217)	SYLVESTER F 31-20D	SYLVESTER F 31-20D	OWB\OWB	Abandoned	155.74	4252.15	10025.00	11788.73	55.60	11788.73	PASS	
Blackburn Offsets	(DOVE HILL Z1 2-6-31) (05-123-26713)	DOVE HILL Z1 2-6-31	DOVE HILL Z1 2-6-31	OWB\OWB	Producing / injecting	8604.21	4989.75	8604.21	10088.66	56.67	10088.66	PASS	



# Closest Approach Clearance Summary Report

## CAPITOL 06N (REV-E.0) PWP - SPE WPTS Stop Drilling HSE Risk (2017)

Page 8 of 9



REFERENCE WELLPATH IDENTIFICATION			
Operator	PDC ENERGY INC	Well	CAPITOL 06N
Field	WELD COUNTY (NAD83/GRID)	API/Legal	
Facility	SEC.36-T05N-R66W	Wellbore	CAPITOL 06N PWB
Slot	SLOT#06 CAPITOL 06N (241'FSL & 2348'FWL,SEC.36)		

CALCULATION RANGE & CUTOFF		
From: 25.00ft MD	To: 17051.91ft MD	C-C Cutoff: (none)

OFFSET WELL CLEARANCE SUMMARY (171 Offset Wellpaths selected) Ratios are calculated in Closest Approach plane												
Offset Facility	Offset Slot	Offset Well	Offset Wellbore	Offset Wellpath	Wellbore Status	C-C Clearance Distance			Rule Separation Ratio			
						Ref MD [ft]	Min C-C Clear Dist [ft]	Diverging from MD [ft]	Ref MD of Min Ratio [ft]	Min Ratio	Min Ratio Dvrg from [ft]	Rule Status
Blackburn Offsets	(EVANS INDUSTRIAL PARK 1) (05-123-16337) - Could not confirm gyro from ECMC	EVANS INDUSTRIAL PARK 1	EVANS INDUSTRIAL PARK 1	OWB\OWB	Abandoned	13365.25	6973.12	13365.25	16141.47	56.93	16141.47	PASS
Blackburn Offsets	(UNION PACIFIC 1-1) (05-123-14011)	UNION PACIFIC 1-1	UNION PACIFIC 1-1	OWB\OWB	Abandoned	25.00	3160.32	25.00	6711.17	57.56	6711.17	PASS
Blackburn Offsets	(BRANTNER 30-9) (05-123-13310)	BRANTNER 30-9	BRANTNER 30-9	OWB\OWB	Abandoned	14454.25	8168.76	14454.25	17051.91	58.41	17051.91	PASS
Blackburn Offsets	(SYLVESTER F 31-33) (05-123-33216)	SYLVESTER F 31-33	SYLVESTER F 31-33	OWB\OWB	Producing / injecting	330.32	3399.88	8625.00	9894.94	58.71	9894.94	PASS
Blackburn Offsets	(CONNELL X3 3-7-31) (05-123-26715)	CONNELL X3 3-7-31	CONNELL X3 3-7-31	CONNELL X3 3-7-31	Abandoned	325.59	5275.28	7925.00	8300.01	58.94	8300.01	PASS
Blackburn Offsets	(GEMINI K 1-10) (05-123-13869)	GEMINI K 1-10	GEMINI K 1-10	OWB\OWB	Abandoned	6425.00	3361.63	6425.00	6597.10	59.12	6597.10	PASS
Blackburn Offsets	(ELLIS Y1 5-1-06) (05-123-25901)	ELLIS Y1 5-1-06	ELLIS Y1 5-1-06	OWB\OWB	Abandoned	25.00	5581.99	25.00	6558.18	60.04	16225.00	PASS
Blackburn Offsets	(COLE X6 4-8-31) (05-123-31836)	COLE X6 4-8-31	COLE X6 4-8-31	OWB\OWB	Abandoned	202.12	5321.66	7625.00	7070.14	62.35	7070.14	PASS
SEC.24-T5N-R66W	Slot #3 SEGL #4-24 (05-123-23050) SI	SEGL 4-24	SEGL 4-24 (AWB)	SEGL 4-24 (AWP#1)	Other	17051.91	5661.39	17051.91	17051.91	62.86	17051.91	PASS
SEC.24-T5N-R66W	Slot #2 SEGL #18-24 (05-123-23051) SI	SEGL 18-24	SEGL 18-24 (AWB)	SEGL 18-24 (AWP#1)	Other	17051.91	4809.71	17051.91	17051.91	63.76	17051.91	PASS
Blackburn Offsets	(BRANTNER 30-16) (05-123-13282)	BRANTNER 30-16	BRANTNER 30-16	OWB\OWB	Abandoned	13425.73	8335.31	13425.73	17051.91	64.37	17051.91	PASS
SEC.24-T5N-R66W	Slot #5 SEGL #2-24 (05-123-23841) PA	SEGL 2-24	SEGL 2-24 AWB	SEGL 2-24 AWP	Drilling	17051.91	5820.90	17051.91	17051.91	64.75	17051.91	PASS
SEC.24-T5N-R66W	Slot #1 SEGL #3-24 (05-123-20620) PA	SEGL 3-24	SEGL 3-24 (AWB)	SEGL 3-24 (AWP#1)	Other	17051.91	5498.84	17051.91	17051.91	64.75	17051.91	PASS
		STEWARTS Z4 6-2-06	STEWARTS Z4 6-2-06	OWB\OWB	Abandoned	25.00	5597.71	25.00	6834.96	64.95	15725.00	PASS

OFFSET WELL CLEARANCE SUMMARY (171 Offset Wellpaths selected) Ratios are calculated in Closest Approach plane												
Offset Facility	Offset Slot	Offset Well	Offset Wellbore	Offset Wellpath	Wellbore Status	C-C Clearance Distance			Rule Separation Ratio			
						Ref MD [ft]	Min C-C Clear Dist [ft]	Diverging from MD [ft]	Ref MD of Min Ratio [ft]	Min Ratio	Min Ratio Dvrg from [ft]	Rule Status
Blackburn Offsets	(STEWARTS Z4 6-2-06) (05-123-26711) - Need actual survey data											
Blackburn Offsets	(SHAMROCK FEDERAL PC G 07-30D) (05-123-34885)	SHAMROCK FEDERAL PC G 07-30D	SHAMROCK FEDERAL PC G 07-30D	OWB\OWB	Producing / injecting	6425.00	5946.01	6425.00	6627.59	65.96	6627.59	PASS
Blackburn Offsets	(GP-DAIRY 1-20-19) (05-123-40328)	GP-DAIRY 1-20-19	GP-DAIRY 1-20-19	OWB\OWB	Producing / injecting	17051.91	11225.21	17051.91	17051.91	66.24	17051.91	PASS
Blackburn Offsets	(VALLEY PACK X5 3-5-31) (05-123-26714)	VALLEY PACK X5 3-5-31	VALLEY PACK X5 3-5-31	OWB\OWB	Abandoned	306.73	5305.99	9325.00	11505.79	66.33	11505.79	PASS
Blackburn Offsets	(HAYS 31-2H5) (05-123-18211)	HAYS 31-2H5	HAYS 31-2H5	OWB\OWB	Abandoned	11567.32	7010.69	11567.32	14812.96	66.97	14812.96	PASS
Blackburn Offsets	(SYLVESTER 1) (05-123-12010)	SYLVESTER 1	SYLVESTER 1	OWB\OWB	Abandoned	313.12	3671.78	8025.00	9389.57	68.53	9389.57	PASS
Blackburn Offsets	(GEMINI K1-9) (05-123-13879)	GEMINI K1-9	GEMINI K1-9	OWB\OWB	Abandoned	6424.41	4086.53	6424.41	6668.38	70.58	6668.38	PASS
Blackburn Offsets	(RE-1 X7 4-6-31) (05-123-31863)	RE-1 X7 4-6-31	RE-1 X7 4-6-31	OWB\OWB	Abandoned	25.00	5340.14	8525.00	10087.88	71.08	10087.88	PASS
Blackburn Offsets	(GEMINI K 1-13) (05-123-17669)	GEMINI K 1-13	GEMINI K 1-13	OWB\OWB	Abandoned	6483.76	4327.17	6483.76	6709.29	72.65	6709.29	PASS
Blackburn Offsets	(HAYS 31-1H5) (05-123-11327)	HAYS 31-1H5	HAYS 31-1H5	OWB\OWB	Abandoned	11884.56	8233.66	11884.56	16112.76	73.00	16112.76	PASS
Blackburn Offsets	(MAIN Y3 6-8-31) (05-123-31835)	MAIN Y3 6-8-31	MAIN Y3 6-8-31	OWB\OWB	Suspended	311.31	5852.50	8225.00	6799.62	75.24	16325.00	PASS
Blackburn Offsets	(GEMINI K FEDERAL 1-15) (05-123-13871)	GEMINI K FEDERAL 1-15	GEMINI K FEDERAL 1-15	OWB\OWB	Abandoned	6425.00	4395.66	6425.00	6625.00	77.07	6625.00	PASS



# Closest Approach Clearance Summary Report

## CAPITOL 06N (REV-E.0) PWP - SPE WPTS Stop Drilling HSE Risk (2017)

Page 9 of 9



REFERENCE WELLPATH IDENTIFICATION			
Operator	PDC ENERGY INC	Well	CAPITOL 06N
Field	WELD COUNTY (NAD83/GRID)	API/Legal	
Facility	SEC.36-T05N-R66W	Wellbore	CAPITOL 06N PWB
Slot	SLOT#06 CAPITOL 06N (241'FSL & 2348'FWL,SEC.36)		

CALCULATION RANGE & CUTOFF		
From: 25.00ft MD	To: 17051.91ft MD	C-C Cutoff: (none)

OFFSET WELL CLEARANCE SUMMARY (171 Offset Wellpaths selected) Ratios are calculated in Closest Approach plane												
Offset Facility	Offset Slot	Offset Well	Offset Wellbore	Offset Wellpath	Wellbore Status	C-C Clearance Distance			Rule Separation Ratio			
						Ref MD [ft]	Min C-C Clear Dist [ft]	Diverging from MD [ft]	Ref MD of Min Ratio [ft]	Min Ratio	Min Ratio Dvrg from [ft]	Rule Status
Blackburn Offsets	(LASALLE PARK Y5 5-5-31) (05-123-25898)	LASALLE PARK Y5 5-5-31	LASALLE PARK Y5 5-5-31	OWB\OWB	Producing / injecting	425.00	5623.57	9125.00	12398.08	78.17	12398.08	PASS
Blackburn Offsets	(DABCO 1) (05-123-10955)	DABCO 1	DABCO 1	OWB\OWB	Abandoned	419.16	4310.29	419.16	6858.09	79.46	6858.09	PASS
Blackburn Offsets	(HUMAN BEAN Y2 5-7-31) (05-123-25900)	HUMAN BEAN Y2 5-7-31	HUMAN BEAN Y2 5-7-31	OWB\OWB	Abandoned	325.00	5644.76	8425.00	6988.40	80.14	15825.00	PASS
Blackburn Offsets	(HAYS FEDERAL 31-8H5)(05-123-18213)	HAYS FEDERAL 31-8H5	HAYS FEDERAL 31-8H5	OWB\OWB	Abandoned	333.90	8019.84	10525.00	15109.22	81.63	15109.22	PASS
Blackburn Offsets	(DABCO 2) (05-123-11528)	DABCO 2	DABCO 2	OWB\OWB	Abandoned	25.00	5409.23	300.00	7052.43	83.28	7052.43	PASS
Blackburn Offsets	(GOODNER Y4 7-1-06) (05-123-25899)	GOODNER Y4 7-1-06	GOODNER Y4 7-1-06	OWB\OWB	Abandoned	25.00	5614.33	8325.00	6525.40	86.01	16025.00	PASS
Blackburn Offsets	(FARMERS Y7 6-6-31) (05-123-25896)	FARMERS Y7 6-6-31	FARMERS Y7 6-6-31	OWB\OWB	Abandoned	301.31	5884.41	8825.00	9525.00	87.10	14925.00	PASS
Blackburn Offsets	(H&S 1) (05-123-11529)	H&S 1	H&S 1	OWB\OWB	Abandoned	99.35	5048.71	3325.00	6750.11	87.28	6750.11	PASS
Blackburn Offsets	(MCCOUTCHEONS Y8 7-5-31) (05-123-25895)	MCCOUTCHEONS Y8 7-5-31	MCCOUTCHEONS Y8 7-5-31	OWB\OWB	Abandoned	269.20	5896.90	9725.00	14314.03	89.82	15325.00	PASS
Blackburn Offsets	(SHAMROCK FEDERAL G 07-29D) (05-123-34884)	SHAMROCK FEDERAL G 07-29D	SHAMROCK FEDERAL G 07-29D	OWB\OWB	Producing / injecting	943.37	6885.32	6425.00	6804.64	92.67	6804.64	PASS
Blackburn Offsets	(BALLFIELD Y6 7-7-31) (05-123-25897)	BALLFIELD Y6 7-7-31	BALLFIELD Y6 7-7-31	OWB\OWB	Abandoned	371.48	5861.80	8925.00	14856.26	93.12	16425.00	PASS
Blackburn Offsets	(AMBER FEDERAL G06-21D) (05-123-34902)	AMBER FEDERAL G06-21D	AMBER FEDERAL G06-21D	OWB\OWB	Suspended	5288.65	6659.89	5288.65	6905.98	94.72	6905.98	PASS
Blackburn Offsets	(GOODNER G FEDERAL 6-11) (05-123-12314)	GOODNER G FEDERAL 6-11	GOODNER G FEDERAL 6-11	OWB\OWB	Producing / injecting	640.55	6097.00	6225.00	6844.85	108.29	6844.85	PASS
		AMBER FEDERAL G06-22D	AMBER FEDERAL G06-22D	OWB\OWB	Suspended	4215.71	7788.21	4215.71	7002.39	109.34	7002.39	PASS

**OFFSET WELL CLEARANCE SUMMARY** (171 Offset Wellpaths selected) Ratios are calculated in Closest Approach plane

Offset Facility	Offset Slot	Offset Well	Offset Wellbore	Offset Wellpath	Wellbore Status	C-C Clearance Distance			Rule Separation Ratio			
						Ref MD [ft]	Min C-C Clear Dist [ft]	Diverging from MD [ft]	Ref MD of Min Ratio [ft]	Min Ratio	Min Ratio Dvrg from [ft]	Rule Status
Blackburn Offsets	(AMBER FEDERAL G06-22D) (05-123-34904)											
Blackburn Offsets	(CURTIS G 6-8) (05-123-21981)	CURTIS G 6-8	CURTIS G 6-8	OWB\OWB	Abandoned	314.24	6922.27	314.24	11091.75	111.28	11091.75	PASS
Blackburn Offsets	(AMBER G 05-32D) (05-123-34903)	AMBER G 05-32D	AMBER G 05-32D	OWB\OWB	Suspended	25.00	8125.24	25.00	7225.00	116.44	9925.00	PASS
Blackburn Offsets	(MCCARTHY 1) (05-123-10630)	MCCARTHY 1	MCCARTHY 1	OWB\OWB	Abandoned	2175.70	6891.60	6325.00	6825.00	119.89	6825.00	PASS
Blackburn Offsets	(CURTIS G 6-7) (05-123-19429)	CURTIS G 6-7	CURTIS G 6-7	OWB\OWB	Suspended	337.00	6772.99	337.00	7050.14	123.35	7050.14	PASS
Blackburn Offsets	(DEVOTIE #1-6) (05-123-11773)	DEVOTIE #1-6	DEVOTIE #1-6	OWB\OWB	Abandoned	366.37	7245.16	366.37	6872.02	129.87	6872.02	PASS
Blackburn Offsets	(DEVOTIE 2-6) (05-123-14919)	DEVOTIE 2-6	DEVOTIE 2-6	OWB\OWB	Abandoned	309.42	7950.92	3025.00	6825.00	135.02	6825.00	PASS
Blackburn Offsets	(MERCURE 6-1) (05-123-13626)	MERCURE 6-1	MERCURE 6-1	OWB\OWB	Abandoned	321.01	9049.23	321.01	6859.78	158.26	6859.78	PASS