

# PDC ENERGY INC

Location: COLORADO Slot: SLOT#05 CAPITOL 05N (254'FSL & 2342'FWL,SEC.36)  
 Field: WELD COUNTY (NAD83/GRID) Well: CAPITOL 05N  
 Facility: SEC.36-T05N-R66W Wellbore: CAPITOL 05N PWB

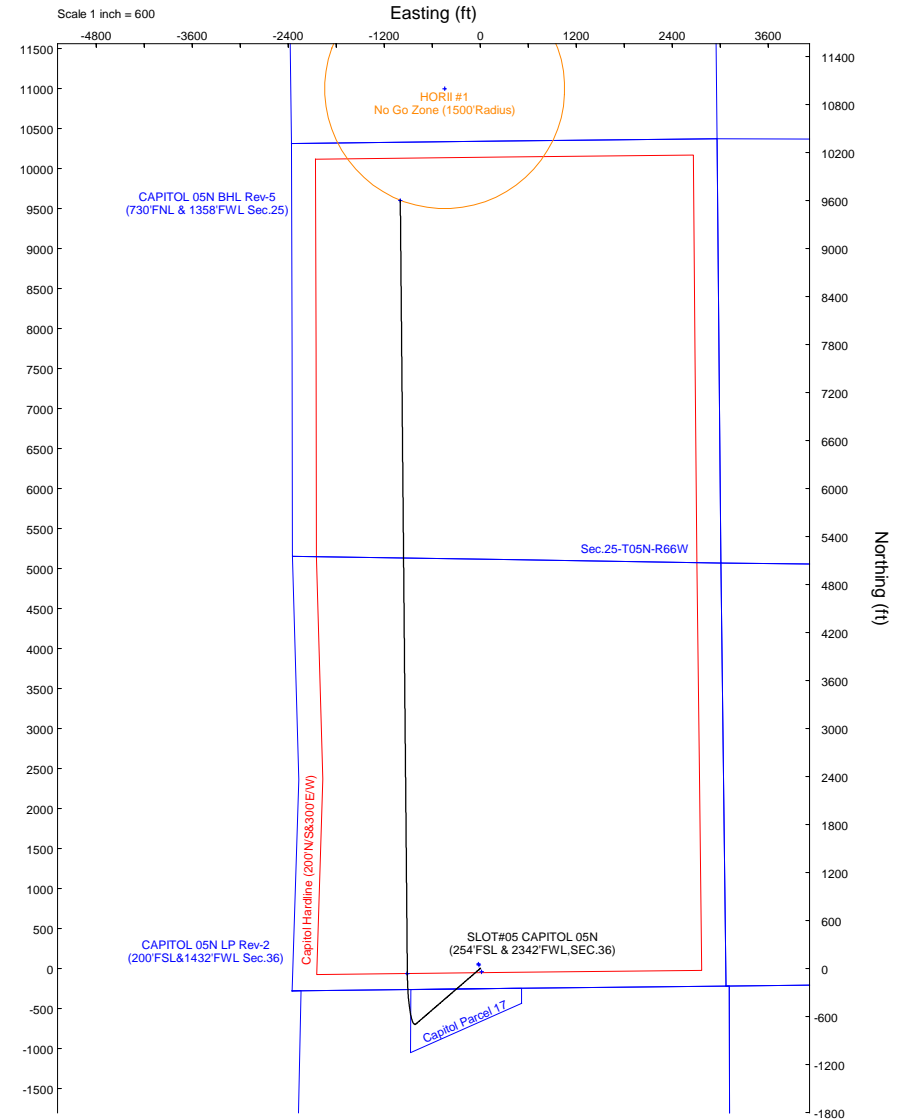
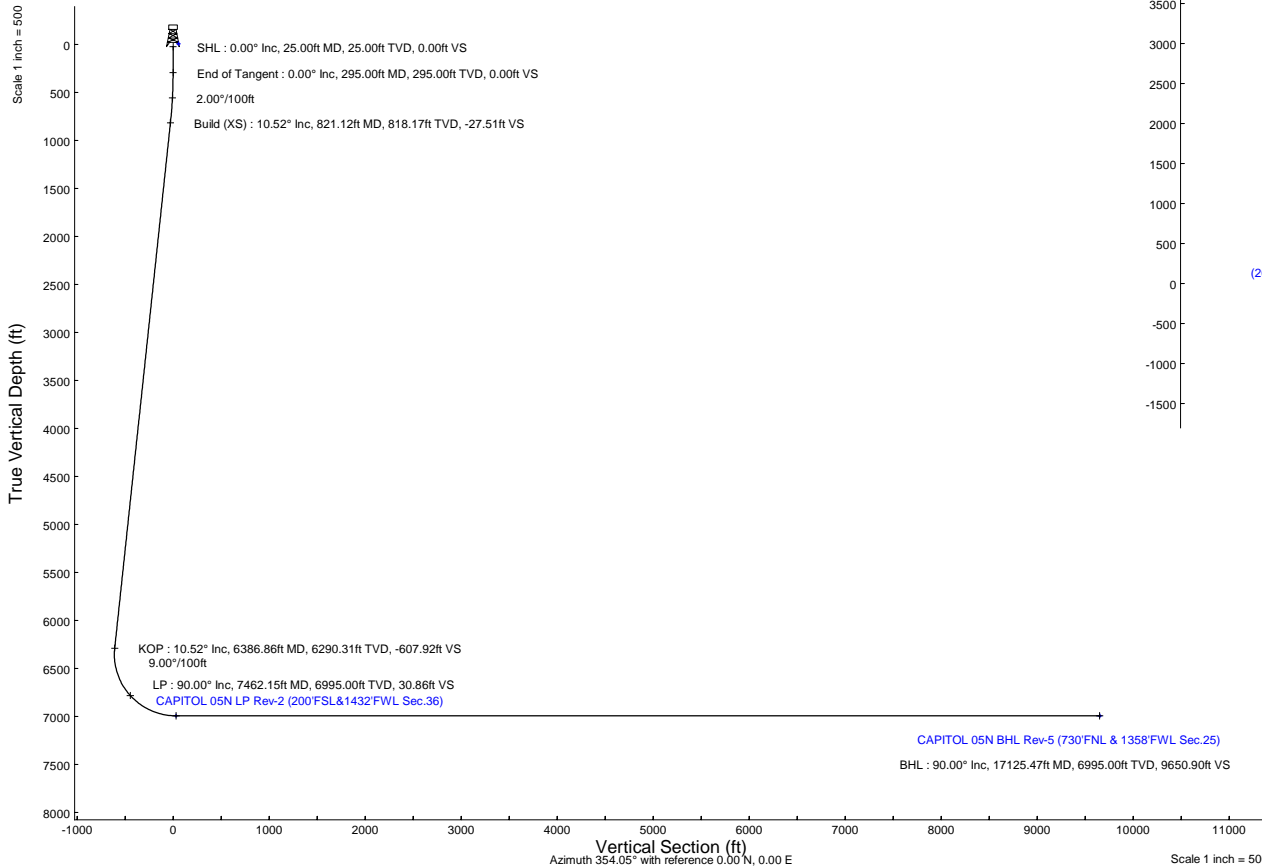
Plot reference wellpath is CAPITOL 05N (REV-E.0) PWP	Grid System: NAD83 / Lambert Colorado SP, Northern Zone (501), US feet
True vertical depths are referenced to Rig (4664'GL+25'KB = 4689'RKB) (RKB)	North Reference: Grid north
Reference wellpath measured depths are referenced to Rig (4664'GL+25'KB = 4689'RKB) (RKB)	Scale: True distance
Rig (4664'GL+25'KB = 4689'RKB) (RKB) to Mean Sea Level: 4689 feet	Coordinates are in feet referenced to Slot
Mean Sea Level to Ground level (At Slot: SLOT#05 CAPITOL 05N (254'FSL & 2342'FWL,SEC.36)): 0 feet	Depths are in feet
Offset wellpath MDs are referenced to each path's default MD datum	Created by: guenaler on 2025-06-20; Database: WA_Denver

## Location Information

Facility Name		Grid East (US ft)	Grid North (US ft)	Latitude	Longitude	
SEC.36-T05N-R66W		3215510.944	1371026.935	40°20'57.4472"N	104°43'36.3718"W	
Slot	Local N (ft)	Local E (ft)	Grid East (US ft)	Grid North (US ft)	Latitude	Longitude
SLOT#05 CAPITOL 05N (254'FSL & 2342'FWL,SEC.36)	-55.20	23.45	3215534.390	1370971.735	40°20'56.8997"N	104°43'36.0750"W
Rig (4664'GL+25'KB = 4689'RKB) (RKB) to Ground level (At Slot: SLOT#05 CAPITOL 05N (254'FSL & 2342'FWL,SEC.36))				4689ft		
Mean Sea Level to Ground level (At Slot: SLOT#05 CAPITOL 05N (254'FSL & 2342'FWL,SEC.36))				0ft		
Rig (4664'GL+25'KB = 4689'RKB) (RKB) to Mean Sea Level				4689ft		

## Well Profile Data

Design Comment	MD (ft)	Inc (°)	Az (°)	TVD (ft)	Local N (ft)	Local E (ft)	DLS (°/100ft)	VS (ft)
SHL	25.00	0.00	229.230	25.00	0.00	0.00	0.00	0.00
End of Tangent	295.00	0.00	229.230	295.00	0.00	0.00	0.00	0.00
Build (XS)	821.12	10.522	229.230	818.17	-31.46	-36.48	2.00	-27.51
KOP	6386.86	10.522	229.230	6290.31	-695.21	-806.24	0.00	-607.92
LP	7462.15	90.000	359.478	6995.00	-63.97	-911.91	9.00	30.86
BHL	17125.47	90.000	359.478	6995.00	9598.95	-1000.00	0.00	9650.90



N  
 Grid  
 True  
 Magnetic  
 W E

HDGM2024v1.0 (1900.0 to 2025.0) Dip: 66.52° Field: 51611.2 nT  
 Magnetic North is 7.67 degrees East of True North (at 8/22/2024)  
 Grid North is 0.50 degrees East of True North  
 To correct azimuth from True to Grid subtract 0.50 degrees  
 To correct azimuth from Magnetic to Grid add 7.17 degrees



# Planned Wellpath Report

CAPITOL 05N (REV-E.0) PWP

Page 1 of 9



REFERENCE WELLPATH IDENTIFICATION			
Operator	PDC ENERGY INC	Well	CAPITOL 05N
Field	WELD COUNTY (NAD83/GRID)	API/Legal	
Facility	SEC.36-T05N-R66W	Wellbore	CAPITOL 05N PWB
Slot	SLOT#05 CAPITOL 05N (254'FSL & 2342'FWL,SEC.36)		

REPORT SETUP INFORMATION			
Projection System	NAD83 / Lambert Colorado SP, Northern Zone (501), US feet	Software System	WellArchitect® 6.0
North Reference	Grid	User	Guenaler
Scale	0.999958	Report Generated	6/20/2025 at 2:52:17 PM
Convergence at slot	0.50° East	Database	WA_Denver

WELLPATH LOCATION						
	Local coordinates		Grid coordinates		Geographic coordinates	
	North[ft]	East[ft]	Easting[US ft]	Northing[US ft]	Latitude	Longitude
Slot Location	-55.20	23.45	3215534.39	1370971.74	40.3491388°	-104.7266875°
Facility Reference Pt			3215510.94	1371026.94	40.3492909°	-104.7267699°
Field Reference Pt			3296400.32	1413291.61	40.4630000°	-104.4347500°

WELLPATH DATUM			
Calculation method	Minimum curvature	Rig (4664'GL+25'KB = 4689'RKB) (RKB) to Facility Vertical Datum	4689.00ft
Horizontal Reference Pt	Slot	Rig (4664'GL+25'KB = 4689'RKB) (RKB) to Mean Sea Level	4689.00ft
Vertical Reference Pt	Rig (4664'GL+25'KB = 4689'RKB) (RKB)	Rig (4664'GL+25'KB = 4689'RKB) (RKB) to Ground Level at Slot (SLOT#05 CAPITOL 05N (254'FSL & 2342'FWL,SEC.36))	4689.00ft
MD Reference Pt	Rig (4664'GL+25'KB = 4689'RKB) (RKB)	Section Origin	N 0.00, E 0.00 ft
Field Vertical Reference	Mean Sea Level	Section Azimuth	354.05°



# Planned Wellpath Report

CAPITOL 05N (REV-E.0) PWP

Page 2 of 9



## REFERENCE WELLPATH IDENTIFICATION

Operator	PDC ENERGY INC	Well	CAPITOL 05N
Field	WELD COUNTY (NAD83/GRID)	API/Legal	
Facility	SEC.36-T05N-R66W	Wellbore	CAPITOL 05N PWB
Slot	SLOT#05 CAPITOL 05N (254'FSL & 2342'FWL,SEC.36)		

## WELLPATH DATA (190 stations) † = interpolated, ‡ = extrapolated station

MD [ft]	Inclination [°]	Azimuth [°]	TVD [ft]	Vert Sect [ft]	North [ft]	East [ft]	Latitude	Longitude	DLS [°/100ft]	Comments
0.00†	0.000	229.230	0.00	0.00	0.00	0.00	40.3491388	-104.7266875	0.00	
25.00	0.000	229.230	25.00	0.00	0.00	0.00	40.3491388	-104.7266875	0.00	SHL
125.00†	0.000	229.230	125.00	0.00	0.00	0.00	40.3491388	-104.7266875	0.00	
225.00†	0.000	229.230	225.00	0.00	0.00	0.00	40.3491388	-104.7266875	0.00	
295.00	0.000	229.230	295.00	0.00	0.00	0.00	40.3491388	-104.7266875	0.00	End of Tangent
325.00†	0.600	229.230	325.00	-0.09	-0.10	-0.12	40.3491385	-104.7266879	2.00	
425.00†	2.600	229.230	424.96	-1.68	-1.93	-2.23	40.3491336	-104.7266956	2.00	
525.00†	4.600	229.230	524.75	-5.27	-6.03	-6.99	40.3491224	-104.7267128	2.00	
625.00†	6.600	229.230	624.27	-10.84	-12.40	-14.38	40.3491051	-104.7267395	2.00	
725.00†	8.600	229.230	723.39	-18.39	-21.03	-24.39	40.3490817	-104.7267757	2.00	
821.12	10.522	229.230	818.17	-27.51	-31.46	-36.48	40.3490533	-104.7268194	2.00	Build (XS)
825.00†	10.522	229.230	821.98	-27.91	-31.92	-37.02	40.3490521	-104.7268213	0.00	
925.00†	10.522	229.230	920.30	-38.34	-43.85	-50.85	40.3490197	-104.7268713	0.00	
1025.00†	10.522	229.230	1018.62	-48.77	-55.77	-64.68	40.3489873	-104.7269213	0.00	
1125.00†	10.522	229.230	1116.94	-59.20	-67.70	-78.51	40.3489549	-104.7269713	0.00	
1225.00†	10.522	229.230	1215.26	-69.63	-79.63	-92.34	40.3489225	-104.7270213	0.00	
1325.00†	10.522	229.230	1313.57	-80.06	-91.55	-106.17	40.3488901	-104.7270713	0.00	
1339.67†	10.522	229.230	1328.00	-81.59	-93.30	-108.20	40.3488853	-104.7270786	0.00	PIERRE_(UPPER)_AQUIFER_BASE
1425.00†	10.522	229.230	1411.89	-90.48	-103.48	-120.00	40.3488577	-104.7271213	0.00	
1525.00†	10.522	229.230	1510.21	-100.91	-115.40	-133.83	40.3488253	-104.7271712	0.00	
1625.00†	10.522	229.230	1608.53	-111.34	-127.33	-147.66	40.3487928	-104.7272212	0.00	
1725.00†	10.522	229.230	1706.85	-121.77	-139.25	-161.49	40.3487604	-104.7272712	0.00	
1825.00†	10.522	229.230	1805.17	-132.20	-151.18	-175.32	40.3487280	-104.7273212	0.00	
1925.00†	10.522	229.230	1903.48	-142.63	-163.10	-189.16	40.3486956	-104.7273712	0.00	
2025.00†	10.522	229.230	2001.80	-153.05	-175.03	-202.99	40.3486632	-104.7274212	0.00	
2125.00†	10.522	229.230	2100.12	-163.48	-186.96	-216.82	40.3486308	-104.7274712	0.00	
2225.00†	10.522	229.230	2198.44	-173.91	-198.88	-230.65	40.3485984	-104.7275212	0.00	
2316.09†	10.522	229.230	2288.00	-183.41	-209.74	-243.24	40.3485689	-104.7275667	0.00	PIERRE_MBR_A_SD_TOP
2325.00†	10.522	229.230	2296.76	-184.34	-210.81	-244.48	40.3485660	-104.7275712	0.00	
2425.00†	10.522	229.230	2395.08	-194.77	-222.73	-258.31	40.3485336	-104.7276211	0.00	



# Planned Wellpath Report

CAPITOL 05N (REV-E.0) PWP

Page 3 of 9



## REFERENCE WELLPATH IDENTIFICATION

Operator	PDC ENERGY INC	Well	CAPITOL 05N
Field	WELD COUNTY (NAD83/GRID)	API/Legal	
Facility	SEC.36-T05N-R66W	Wellbore	CAPITOL 05N PWB
Slot	SLOT#05 CAPITOL 05N (254'FSL & 2342'FWL,SEC.36)		

## WELLPATH DATA (190 stations) † = interpolated, ‡ = extrapolated station

MD [ft]	Inclination [°]	Azimuth [°]	TVD [ft]	Vert Sect [ft]	North [ft]	East [ft]	Latitude	Longitude	DLS [°/100ft]	Comments
2525.00†	10.522	229.230	2493.39	-205.20	-234.66	-272.14	40.3485012	-104.7276711	0.00	
2625.00†	10.522	229.230	2591.71	-215.62	-246.58	-285.97	40.3484688	-104.7277211	0.00	
2725.00†	10.522	229.230	2690.03	-226.05	-258.51	-299.80	40.3484364	-104.7277711	0.00	
2825.00†	10.522	229.230	2788.35	-236.48	-270.43	-313.63	40.3484040	-104.7278211	0.00	
2853.12†	10.522	229.230	2816.00	-239.41	-273.79	-317.52	40.3483949	-104.7278352	0.00	PIERRE_MBR_A_SD_BASE
2925.00†	10.522	229.230	2886.67	-246.91	-282.36	-327.46	40.3483716	-104.7278711	0.00	
3025.00†	10.522	229.230	2984.99	-257.34	-294.29	-341.29	40.3483392	-104.7279211	0.00	
3125.00†	10.522	229.230	3083.30	-267.77	-306.21	-355.12	40.3483068	-104.7279711	0.00	
3225.00†	10.522	229.230	3181.62	-278.19	-318.14	-368.95	40.3482744	-104.7280211	0.00	
3325.00†	10.522	229.230	3279.94	-288.62	-330.06	-382.78	40.3482420	-104.7280710	0.00	
3425.00†	10.522	229.230	3378.26	-299.05	-341.99	-396.61	40.3482096	-104.7281210	0.00	
3525.00†	10.522	229.230	3476.58	-309.48	-353.91	-410.44	40.3481772	-104.7281710	0.00	
3625.00†	10.522	229.230	3574.90	-319.91	-365.84	-424.27	40.3481448	-104.7282210	0.00	
3680.03†	10.522	229.230	3629.00	-325.65	-372.40	-431.88	40.3481270	-104.7282485	0.00	PARKMAN
3725.00†	10.522	229.230	3673.22	-330.34	-377.76	-438.10	40.3481124	-104.7282710	0.00	
3825.00†	10.522	229.230	3771.53	-340.76	-389.69	-451.93	40.3480800	-104.7283210	0.00	
3925.00†	10.522	229.230	3869.85	-351.19	-401.62	-465.76	40.3480476	-104.7283710	0.00	
4025.00†	10.522	229.230	3968.17	-361.62	-413.54	-479.59	40.3480152	-104.7284210	0.00	
4125.00†	10.522	229.230	4066.49	-372.05	-425.47	-493.42	40.3479828	-104.7284710	0.00	
4149.93†	10.522	229.230	4091.00	-374.65	-428.44	-496.87	40.3479747	-104.7284834	0.00	SUSSEX
4225.00†	10.522	229.230	4164.81	-382.48	-437.39	-507.25	40.3479504	-104.7285209	0.00	
4325.00†	10.522	229.230	4263.13	-392.91	-449.32	-521.08	40.3479180	-104.7285709	0.00	
4425.00†	10.522	229.230	4361.44	-403.33	-461.24	-534.91	40.3478856	-104.7286209	0.00	
4525.00†	10.522	229.230	4459.76	-413.76	-473.17	-548.74	40.3478532	-104.7286709	0.00	
4625.00†	10.522	229.230	4558.08	-424.19	-485.09	-562.57	40.3478208	-104.7287209	0.00	
4725.00†	10.522	229.230	4656.40	-434.62	-497.02	-576.40	40.3477884	-104.7287709	0.00	
4825.00†	10.522	229.230	4754.72	-445.05	-508.95	-590.23	40.3477560	-104.7288209	0.00	
4853.77†	10.522	229.230	4783.00	-448.05	-512.38	-594.21	40.3477466	-104.7288353	0.00	SHANNON
4925.00†	10.522	229.230	4853.04	-455.48	-520.87	-604.06	40.3477235	-104.7288709	0.00	
5025.00†	10.522	229.230	4951.35	-465.90	-532.80	-617.90	40.3476911	-104.7289208	0.00	



# Planned Wellpath Report

CAPITOL 05N (REV-E.0) PWP

Page 4 of 9



## REFERENCE WELLPATH IDENTIFICATION

Operator	PDC ENERGY INC	Well	CAPITOL 05N
Field	WELD COUNTY (NAD83/GRID)	API/Legal	
Facility	SEC.36-T05N-R66W	Wellbore	CAPITOL 05N PWB
Slot	SLOT#05 CAPITOL 05N (254'FSL & 2342'FWL,SEC.36)		

## WELLPATH DATA (190 stations) † = interpolated, ‡ = extrapolated station

MD [ft]	Inclination [°]	Azimuth [°]	TVD [ft]	Vert Sect [ft]	North [ft]	East [ft]	Latitude	Longitude	DLS [°/100ft]	Comments
5125.00†	10.522	229.230	5049.67	-476.33	-544.72	-631.73	40.3476587	-104.7289708	0.00	
5225.00†	10.522	229.230	5147.99	-486.76	-556.65	-645.56	40.3476263	-104.7290208	0.00	
5325.00†	10.522	229.230	5246.31	-497.19	-568.57	-659.39	40.3475939	-104.7290708	0.00	
5425.00†	10.522	229.230	5344.63	-507.62	-580.50	-673.22	40.3475615	-104.7291208	0.00	
5525.00†	10.522	229.230	5442.95	-518.05	-592.42	-687.05	40.3475291	-104.7291708	0.00	
5625.00†	10.522	229.230	5541.26	-528.47	-604.35	-700.88	40.3474967	-104.7292208	0.00	
5725.00†	10.522	229.230	5639.58	-538.90	-616.28	-714.71	40.3474643	-104.7292708	0.00	
5825.00†	10.522	229.230	5737.90	-549.33	-628.20	-728.54	40.3474319	-104.7293208	0.00	
5925.00†	10.522	229.230	5836.22	-559.76	-640.13	-742.37	40.3473995	-104.7293707	0.00	
6025.00†	10.522	229.230	5934.54	-570.19	-652.05	-756.20	40.3473671	-104.7294207	0.00	
6125.00†	10.522	229.230	6032.86	-580.62	-663.98	-770.03	40.3473347	-104.7294707	0.00	
6141.42†	10.522	229.230	6049.00	-582.33	-665.94	-772.30	40.3473294	-104.7294789	0.00	TEPEE_BUTTES
6225.00†	10.522	229.230	6131.17	-591.04	-675.90	-783.86	40.3473023	-104.7295207	0.00	
6325.00†	10.522	229.230	6229.49	-601.47	-687.83	-797.69	40.3472699	-104.7295707	0.00	
6386.86	10.522	229.230	6290.31	-607.92	-695.21	-806.24	40.3472499	-104.7296016	0.00	KOP
6425.00†	8.730	246.880	6327.92	-610.77	-698.62	-811.55	40.3472406	-104.7296207	9.00	
6525.00†	9.843	304.686	6426.81	-607.43	-696.73	-825.58	40.3472461	-104.7296710	9.00	
6625.00†	16.688	331.255	6524.17	-588.59	-679.24	-839.55	40.3472945	-104.7297206	9.00	
6725.00†	24.920	341.711	6617.60	-554.71	-646.58	-853.09	40.3473844	-104.7297681	9.00	
6825.00†	33.531	347.125	6704.80	-506.61	-599.56	-865.88	40.3475138	-104.7298126	9.00	
6925.00†	42.290	350.511	6783.63	-445.49	-539.32	-877.61	40.3476794	-104.7298528	9.00	
6953.09†	44.766	351.260	6804.00	-426.17	-520.22	-880.67	40.3477319	-104.7298631	9.00	SHARON SPRINGS
7002.93†	49.167	352.440	6838.00	-389.78	-484.17	-885.82	40.3478310	-104.7298805	9.00	NIO_A_CHALK
7025.00†	51.120	352.914	6852.14	-372.84	-467.37	-887.98	40.3478772	-104.7298877	9.00	
7037.67†	52.242	353.174	6860.00	-362.90	-457.50	-889.18	40.3479043	-104.7298917	9.00	NIO_A_MARL
7125.00†	59.988	354.780	6908.65	-290.46	-385.45	-896.73	40.3481022	-104.7299166	9.00	
7225.00†	68.878	356.338	6951.77	-200.38	-295.61	-903.67	40.3483490	-104.7299387	9.00	
7237.03†	69.948	356.512	6956.00	-189.13	-284.37	-904.37	40.3483799	-104.7299408	9.00	NIO_B_CHALK
7322.99†	77.601	357.692	6980.00	-106.78	-202.00	-908.52	40.3486060	-104.7299532	9.00	NIO_B_MARL
7325.00†	77.781	357.718	6980.43	-104.81	-200.04	-908.60	40.3486114	-104.7299534	9.00	



# Planned Wellpath Report

CAPITOL 05N (REV-E.0) PWP

Page 5 of 9



## REFERENCE WELLPATH IDENTIFICATION

Operator	PDC ENERGY INC	Well	CAPITOL 05N
Field	WELD COUNTY (NAD83/GRID)	API/Legal	
Facility	SEC.36-T05N-R66W	Wellbore	CAPITOL 05N PWB
Slot	SLOT#05 CAPITOL 05N (254'FSL & 2342'FWL,SEC.36)		

## WELLPATH DATA (190 stations) † = interpolated, ‡ = extrapolated station

MD [ft]	Inclination [°]	Azimuth [°]	TVD [ft]	Vert Sect [ft]	North [ft]	East [ft]	Latitude	Longitude	DLS [°/100ft]	Comments
7425.00†	86.690	359.008	6993.93	-6.11	-101.10	-911.42	40.3488831	-104.7299604	9.00	
7462.15	90.000	359.478	6995.00†	30.86	-63.97	-911.91	40.3489850	-104.7299610	9.00	LP
7525.00†	90.000	359.478	6995.00	93.43	-1.12	-912.48	40.3491575	-104.7299611	0.00	
7625.00†	90.000	359.478	6995.00	192.98	98.87	-913.39	40.3494320	-104.7299613	0.00	
7725.00†	90.000	359.478	6995.00	292.54	198.87	-914.30	40.3497065	-104.7299614	0.00	
7825.00†	90.000	359.478	6995.00	392.09	298.86	-915.21	40.3499810	-104.7299616	0.00	
7925.00†	90.000	359.478	6995.00	491.64	398.86	-916.13	40.3502555	-104.7299617	0.00	
8025.00†	90.000	359.478	6995.00	591.19	498.86	-917.04	40.3505300	-104.7299619	0.00	
8125.00†	90.000	359.478	6995.00	690.74	598.85	-917.95	40.3508045	-104.7299620	0.00	
8225.00†	90.000	359.478	6995.00	790.30	698.85	-918.86	40.3510790	-104.7299622	0.00	
8325.00†	90.000	359.478	6995.00	889.85	798.84	-919.77	40.3513535	-104.7299623	0.00	
8425.00†	90.000	359.478	6995.00	989.40	898.84	-920.68	40.3516280	-104.7299625	0.00	
8525.00†	90.000	359.478	6995.00	1088.95	998.84	-921.60	40.3519024	-104.7299626	0.00	
8625.00†	90.000	359.478	6995.00	1188.50	1098.83	-922.51	40.3521769	-104.7299628	0.00	
8725.00†	90.000	359.478	6995.00	1288.06	1198.83	-923.42	40.3524514	-104.7299630	0.00	
8825.00†	90.000	359.478	6995.00	1387.61	1298.82	-924.33	40.3527259	-104.7299631	0.00	
8925.00†	90.000	359.478	6995.00	1487.16	1398.82	-925.24	40.3530004	-104.7299633	0.00	
9025.00†	90.000	359.478	6995.00	1586.71	1498.81	-926.15	40.3532749	-104.7299634	0.00	
9125.00†	90.000	359.478	6995.00	1686.26	1598.81	-927.07	40.3535494	-104.7299636	0.00	
9225.00†	90.000	359.478	6995.00	1785.82	1698.81	-927.98	40.3538239	-104.7299637	0.00	
9325.00†	90.000	359.478	6995.00	1885.37	1798.80	-928.89	40.3540984	-104.7299639	0.00	
9425.00†	90.000	359.478	6995.00	1984.92	1898.80	-929.80	40.3543729	-104.7299640	0.00	
9525.00†	90.000	359.478	6995.00	2084.47	1998.79	-930.71	40.3546474	-104.7299642	0.00	
9625.00†	90.000	359.478	6995.00	2184.03	2098.79	-931.62	40.3549219	-104.7299644	0.00	
9725.00†	90.000	359.478	6995.00	2283.58	2198.79	-932.54	40.3551963	-104.7299645	0.00	
9825.00†	90.000	359.478	6995.00	2383.13	2298.78	-933.45	40.3554708	-104.7299647	0.00	
9925.00†	90.000	359.478	6995.00	2482.68	2398.78	-934.36	40.3557453	-104.7299648	0.00	
10025.00†	90.000	359.478	6995.00	2582.23	2498.77	-935.27	40.3560198	-104.7299650	0.00	
10125.00†	90.000	359.478	6995.00	2681.79	2598.77	-936.18	40.3562943	-104.7299651	0.00	
10225.00†	90.000	359.478	6995.00	2781.34	2698.77	-937.09	40.3565688	-104.7299653	0.00	



# Planned Wellpath Report

CAPITOL 05N (REV-E.0) PWP

Page 6 of 9



## REFERENCE WELLPATH IDENTIFICATION

Operator	PDC ENERGY INC	Well	CAPITOL 05N
Field	WELD COUNTY (NAD83/GRID)	API/Legal	
Facility	SEC.36-T05N-R66W	Wellbore	CAPITOL 05N PWB
Slot	SLOT#05 CAPITOL 05N (254'FSL & 2342'FWL,SEC.36)		

## WELLPATH DATA (190 stations) † = interpolated, ‡ = extrapolated station

MD [ft]	Inclination [°]	Azimuth [°]	TVD [ft]	Vert Sect [ft]	North [ft]	East [ft]	Latitude	Longitude	DLS [°/100ft]	Comments
10325.00†	90.000	359.478	6995.00	2880.89	2798.76	-938.00	40.3568433	-104.7299654	0.00	
10425.00†	90.000	359.478	6995.00	2980.44	2898.76	-938.92	40.3571178	-104.7299656	0.00	
10525.00†	90.000	359.478	6995.00	3079.99	2998.75	-939.83	40.3573923	-104.7299658	0.00	
10625.00†	90.000	359.478	6995.00	3179.55	3098.75	-940.74	40.3576668	-104.7299659	0.00	
10725.00†	90.000	359.478	6995.00	3279.10	3198.74	-941.65	40.3579413	-104.7299661	0.00	
10825.00†	90.000	359.478	6995.00	3378.65	3298.74	-942.56	40.3582158	-104.7299662	0.00	
10925.00†	90.000	359.478	6995.00	3478.20	3398.74	-943.47	40.3584903	-104.7299664	0.00	
11025.00†	90.000	359.478	6995.00	3577.75	3498.73	-944.39	40.3587647	-104.7299665	0.00	
11125.00†	90.000	359.478	6995.00	3677.31	3598.73	-945.30	40.3590392	-104.7299667	0.00	
11225.00†	90.000	359.478	6995.00	3776.86	3698.72	-946.21	40.3593137	-104.7299668	0.00	
11325.00†	90.000	359.478	6995.00	3876.41	3798.72	-947.12	40.3595882	-104.7299670	0.00	
11425.00†	90.000	359.478	6995.00	3975.96	3898.72	-948.03	40.3598627	-104.7299671	0.00	
11525.00†	90.000	359.478	6995.00	4075.51	3998.71	-948.94	40.3601372	-104.7299673	0.00	
11625.00†	90.000	359.478	6995.00	4175.07	4098.71	-949.86	40.3604117	-104.7299675	0.00	
11725.00†	90.000	359.478	6995.00	4274.62	4198.70	-950.77	40.3606862	-104.7299676	0.00	
11825.00†	90.000	359.478	6995.00	4374.17	4298.70	-951.68	40.3609607	-104.7299678	0.00	
11925.00†	90.000	359.478	6995.00	4473.72	4398.69	-952.59	40.3612352	-104.7299679	0.00	
12025.00†	90.000	359.478	6995.00	4573.27	4498.69	-953.50	40.3615097	-104.7299681	0.00	
12125.00†	90.000	359.478	6995.00	4672.83	4598.69	-954.41	40.3617842	-104.7299682	0.00	
12225.00†	90.000	359.478	6995.00	4772.38	4698.68	-955.33	40.3620586	-104.7299684	0.00	
12325.00†	90.000	359.478	6995.00	4871.93	4798.68	-956.24	40.3623331	-104.7299685	0.00	
12425.00†	90.000	359.478	6995.00	4971.48	4898.67	-957.15	40.3626076	-104.7299687	0.00	
12525.00†	90.000	359.478	6995.00	5071.03	4998.67	-958.06	40.3628821	-104.7299689	0.00	
12625.00†	90.000	359.478	6995.00	5170.59	5098.67	-958.97	40.3631566	-104.7299690	0.00	
12725.00†	90.000	359.478	6995.00	5270.14	5198.66	-959.88	40.3634311	-104.7299692	0.00	
12825.00†	90.000	359.478	6995.00	5369.69	5298.66	-960.80	40.3637056	-104.7299693	0.00	
12925.00†	90.000	359.478	6995.00	5469.24	5398.65	-961.71	40.3639801	-104.7299695	0.00	
13025.00†	90.000	359.478	6995.00	5568.79	5498.65	-962.62	40.3642546	-104.7299696	0.00	
13125.00†	90.000	359.478	6995.00	5668.35	5598.64	-963.53	40.3645291	-104.7299698	0.00	
13225.00†	90.000	359.478	6995.00	5767.90	5698.64	-964.44	40.3648036	-104.7299699	0.00	



# Planned Wellpath Report

CAPITOL 05N (REV-E.0) PWP

Page 7 of 9



## REFERENCE WELLPATH IDENTIFICATION

Operator	PDC ENERGY INC	Well	CAPITOL 05N
Field	WELD COUNTY (NAD83/GRID)	API/Legal	
Facility	SEC.36-T05N-R66W	Wellbore	CAPITOL 05N PWB
Slot	SLOT#05 CAPITOL 05N (254'FSL & 2342'FWL,SEC.36)		

## WELLPATH DATA (190 stations) † = interpolated, ‡ = extrapolated station

MD [ft]	Inclination [°]	Azimuth [°]	TVD [ft]	Vert Sect [ft]	North [ft]	East [ft]	Latitude	Longitude	DLS [°/100ft]	Comments
13325.00†	90.000	359.478	6995.00	5867.45	5798.64	-965.35	40.3650780	-104.7299701	0.00	
13425.00†	90.000	359.478	6995.00	5967.00	5898.63	-966.27	40.3653525	-104.7299703	0.00	
13525.00†	90.000	359.478	6995.00	6066.56	5998.63	-967.18	40.3656270	-104.7299704	0.00	
13625.00†	90.000	359.478	6995.00	6166.11	6098.62	-968.09	40.3659015	-104.7299706	0.00	
13725.00†	90.000	359.478	6995.00	6265.66	6198.62	-969.00	40.3661760	-104.7299707	0.00	
13825.00†	90.000	359.478	6995.00	6365.21	6298.62	-969.91	40.3664505	-104.7299709	0.00	
13925.00†	90.000	359.478	6995.00	6464.76	6398.61	-970.82	40.3667250	-104.7299710	0.00	
14025.00†	90.000	359.478	6995.00	6564.32	6498.61	-971.73	40.3669995	-104.7299712	0.00	
14125.00†	90.000	359.478	6995.00	6663.87	6598.60	-972.65	40.3672740	-104.7299713	0.00	
14225.00†	90.000	359.478	6995.00	6763.42	6698.60	-973.56	40.3675485	-104.7299715	0.00	
14325.00†	90.000	359.478	6995.00	6862.97	6798.59	-974.47	40.3678230	-104.7299717	0.00	
14425.00†	90.000	359.478	6995.00	6962.52	6898.59	-975.38	40.3680975	-104.7299718	0.00	
14525.00†	90.000	359.478	6995.00	7062.08	6998.59	-976.29	40.3683719	-104.7299720	0.00	
14625.00†	90.000	359.478	6995.00	7161.63	7098.58	-977.20	40.3686464	-104.7299721	0.00	
14725.00†	90.000	359.478	6995.00	7261.18	7198.58	-978.12	40.3689209	-104.7299723	0.00	
14825.00†	90.000	359.478	6995.00	7360.73	7298.57	-979.03	40.3691954	-104.7299724	0.00	
14925.00†	90.000	359.478	6995.00	7460.28	7398.57	-979.94	40.3694699	-104.7299726	0.00	
15025.00†	90.000	359.478	6995.00	7559.84	7498.57	-980.85	40.3697444	-104.7299727	0.00	
15125.00†	90.000	359.478	6995.00	7659.39	7598.56	-981.76	40.3700189	-104.7299729	0.00	
15225.00†	90.000	359.478	6995.00	7758.94	7698.56	-982.67	40.3702934	-104.7299730	0.00	
15325.00†	90.000	359.478	6995.00	7858.49	7798.55	-983.59	40.3705679	-104.7299732	0.00	
15425.00†	90.000	359.478	6995.00	7958.04	7898.55	-984.50	40.3708424	-104.7299734	0.00	
15525.00†	90.000	359.478	6995.00	8057.60	7998.54	-985.41	40.3711169	-104.7299735	0.00	
15625.00†	90.000	359.478	6995.00	8157.15	8098.54	-986.32	40.3713913	-104.7299737	0.00	
15725.00†	90.000	359.478	6995.00	8256.70	8198.54	-987.23	40.3716658	-104.7299738	0.00	
15825.00†	90.000	359.478	6995.00	8356.25	8298.53	-988.14	40.3719403	-104.7299740	0.00	
15925.00†	90.000	359.478	6995.00	8455.80	8398.53	-989.06	40.3722148	-104.7299741	0.00	
16025.00†	90.000	359.478	6995.00	8555.36	8498.52	-989.97	40.3724893	-104.7299743	0.00	
16125.00†	90.000	359.478	6995.00	8654.91	8598.52	-990.88	40.3727638	-104.7299744	0.00	
16225.00†	90.000	359.478	6995.00	8754.46	8698.52	-991.79	40.3730383	-104.7299746	0.00	



# Planned Wellpath Report

CAPITOL 05N (REV-E.0) PWP

Page 8 of 9



## REFERENCE WELLPATH IDENTIFICATION

Operator	PDC ENERGY INC	Well	CAPITOL 05N
Field	WELD COUNTY (NAD83/GRID)	API/Legal	
Facility	SEC.36-T05N-R66W	Wellbore	CAPITOL 05N PWB
Slot	SLOT#05 CAPITOL 05N (254'FSL & 2342'FWL,SEC.36)		

## WELLPATH DATA (190 stations) † = interpolated, ‡ = extrapolated station

MD [ft]	Inclination [°]	Azimuth [°]	TVD [ft]	Vert Sect [ft]	North [ft]	East [ft]	Latitude	Longitude	DLS [°/100ft]	Comments
16325.00†	90.000	359.478	6995.00	8854.01	8798.51	-992.70	40.3733128	-104.7299748	0.00	
16425.00†	90.000	359.478	6995.00	8953.56	8898.51	-993.61	40.3735873	-104.7299749	0.00	
16525.00†	90.000	359.478	6995.00	9053.12	8998.50	-994.53	40.3738618	-104.7299751	0.00	
16625.00†	90.000	359.478	6995.00	9152.67	9098.50	-995.44	40.3741363	-104.7299752	0.00	
16725.00†	90.000	359.478	6995.00	9252.22	9198.50	-996.35	40.3744107	-104.7299754	0.00	
16825.00†	90.000	359.478	6995.00	9351.77	9298.49	-997.26	40.3746852	-104.7299755	0.00	
16925.00†	90.000	359.478	6995.00	9451.32	9398.49	-998.17	40.3749597	-104.7299757	0.00	
17025.00†	90.000	359.478	6995.00	9550.88	9498.48	-999.08	40.3752342	-104.7299758	0.00	
17125.00†	90.000	359.478	6995.00	9650.43	9598.48	-1000.00	40.3755087	-104.7299760	0.00	
17125.47	90.000	359.478	6995.00 <sup>‡</sup>	9650.90	9598.95	-1000.00	40.3755100	-104.7299760	0.00	BHL

## TARGETS

Name	MD [ft]	TVD [ft]	North [ft]	East [ft]	Grid East [US ft]	Grid North [US ft]	Latitude	Longitude	Shape
Sec.01-T04N-R66W	N/A	-38.00	-3777.45	2515.97	3218050.25	1367194.45	40.3387098	-104.7177809	polygon
	2D Polygon: dimensions not calculated								
Sec.06-T04N-R65W	N/A	-38.00	-3777.45	2515.97	3218050.25	1367194.45	40.3387098	-104.7177809	polygon
	2D Polygon: dimensions not calculated								
Sec.25-T05N-R66W	N/A	-38.00	-3777.45	2515.97	3218050.25	1367194.45	40.3387098	-104.7177809	polygon
	2D Polygon: dimensions not calculated								
Sec.30-T05N-R65W	N/A	-38.00	-3777.45	2515.97	3218050.25	1367194.45	40.3387098	-104.7177809	polygon
	2D Polygon: dimensions not calculated								
Sec.31-T05N-R65W	N/A	-38.00	-3777.45	2515.97	3218050.25	1367194.45	40.3387098	-104.7177809	polygon
	2D Polygon: dimensions not calculated								
Sec.36-T05N-R66W	N/A	-38.00	-3777.45	2515.97	3218050.25	1367194.45	40.3387098	-104.7177809	polygon
	2D Polygon: dimensions not calculated								
Sec.24-T05N-R66W	N/A	-6.00	55.20	-23.45	3215510.94	1371026.94	40.3492909	-104.7267699	polygon
	2D Polygon: dimensions not calculated								

TARGETS									
Name	MD [ft]	TVD [ft]	North [ft]	East [ft]	Grid East [US ft]	Grid North [US ft]	Latitude	Longitude	Shape
CAPITOL 05N BHL (150'FNL & 1375'FWL,SEC.24)	N/A	6957.00	15465.94	-1053.73	3214480.70	1386437.00	40.3916150	-104.7299860	point

TARGETS									
Name	MD [ft]	TVD [ft]	North [ft]	East [ft]	Grid East [US ft]	Grid North [US ft]	Latitude	Longitude	Shape
CAPITOL 05N BPZ 200'FNL&1375'FWLSEC.24	N/A	6957.00	15415.92	-1053.13	3214481.31	1386386.98	40.3914777	-104.7299854	point
CAPITOL 05N Rev-2 BHL (200'FNL & 1375'FWL,SEC.25)	N/A	6957.00	10127.17	-1005.70	3214528.73	1381098.46	40.3769600	-104.7299800	point
CAPITOL 05N LP (200'FSL & 1432'FWL,SEC.36)	N/A	6960.00	-63.97	-911.91	3214622.52	1370907.77	40.3489850	-104.7299610	point
2) CAPITOL 05N BHL Rev-5 (730'FNL & 1358'FWL Sec.25)	17125.47	6995.00	9598.95	-1000.00	3214534.43	1380570.26	40.3755100	-104.7299760	point
1) CAPITOL 05N LP Rev-2 (200'FSL&1432'FWL Sec.36)	7462.15	6995.00	-63.97	-911.91	3214622.52	1370907.77	40.3489850	-104.7299610	point
CAPITOL 05N Rev-3 BHL (200'FNL & 1375'FWL,SEC.25)	N/A	6995.00	10127.17	-1005.70	3214528.73	1381098.46	40.3769600	-104.7299800	point
CAPITOL 05N Rev-4 BHL (724'FNL&1357'FWL Sec.25)	N/A	6995.00	9604.10	-1000.89	3214533.54	1380575.42	40.3755242	-104.7299790	point
HORII #1 No Go Zone (1500'Radius)	N/A	7099.00	10997.32	-444.88	3215089.53	1381968.57	40.3793350	-104.7279400	circle
2D Circle radius 1500.									

TARGETS									
Name	MD [ft]	TVD [ft]	North [ft]	East [ft]	Grid East [US ft]	Grid North [US ft]	Latitude	Longitude	Shape
Capitol Hardline (200'N/S&300'E/W)	N/A	7199.00	41.45	-17.56	3215516.83	1371013.18	40.3492530	-104.7267492	polygon
2D Polygon: dimensions not calculated									

SURVEY PROGRAM - Ref Wellbore: CAPITOL 05N PWB Ref Wellpath: CAPITOL 05N (REV-E.0) PWP				
Start MD [ft]	End MD [ft]	Positional Uncertainty Model	Log Name/Comment	Wellbore
25.00	1995.00	OWSG MWD rev2 - Standard		CAPITOL 05N PWB
1995.00	22958.44	OWSG MWD rev2 (MS+IFR1)		CAPITOL 05N PWB



# Planned Wellpath Report

CAPITOL 05N (REV-E.0) PWP

Page 9 of 9



## REFERENCE WELLPATH IDENTIFICATION

Operator	PDC ENERGY INC	Well	CAPITOL 05N
Field	WELD COUNTY (NAD83/GRID)	API/Legal	
Facility	SEC.36-T05N-R66W	Wellbore	CAPITOL 05N PWB
Slot	SLOT#05 CAPITOL 05N (254'FSL & 2342'FWL,SEC.36)		

## WELLPATH COMMENTS

MD [ft]	Inclination [°]	Azimuth [°]	TVD [ft]	Comment
1339.67	10.522	229.230	1328.00	PIERRE_(UPPER)_AQUIFER_BASE
2316.09	10.522	229.230	2288.00	PIERRE_MBR_A_SD_TOP
2853.12	10.522	229.230	2816.00	PIERRE_MBR_A_SD_BASE
3680.03	10.522	229.230	3629.00	PARKMAN
4149.93	10.522	229.230	4091.00	SUSSEX
4853.77	10.522	229.230	4783.00	SHANNON
6141.42	10.522	229.230	6049.00	TEPEE_BUTTES
6953.09	44.766	351.260	6804.00	SHARON SPRINGS
7002.93	49.167	352.440	6838.00	NIO_A_CHALK
7037.67	52.242	353.174	6860.00	NIO_A_MARL
7237.03	69.948	356.512	6956.00	NIO_B_CHALK
7322.99	77.601	357.692	6980.00	NIO_B_MARL

## DESIGN COMMENTS

MD [ft]	Inclination [°]	Azimuth [°]	TVD [ft]	Comment
25.00	0.000	229.230	25.00	SHL
295.00	0.000	229.230	295.00	End of Tangent
821.12	10.522	229.230	818.17	Build (XS)
6386.86	10.522	229.230	6290.31	KOP
7462.15	90.000	359.478	6995.00	LP
17125.47	90.000	359.478	6995.00	BHL



# Closest Approach Clearance Summary Report

## CAPITOL 05N (REV-E.0) PWP - SPE WPTS Stop Drilling HSE Risk (2017)

Page 1 of 9



### REFERENCE WELLPATH IDENTIFICATION

Operator	PDC ENERGY INC	Well	CAPITOL 05N
Field	WELD COUNTY (NAD83/GRID)	API/Legal	
Facility	SEC.36-T05N-R66W	Wellbore	CAPITOL 05N PWB
Slot	SLOT#05 CAPITOL 05N (254'FSL & 2342'FWL,SEC.36)		

### REPORT SETUP INFORMATION

Projection System	NAD83 / Lambert Colorado SP, Northern Zone (501), US feet	Software System	WellArchitect® 6.0
North Reference	Grid	User	Guenaler
Scale	0.999958	Report Generated	6/20/2025 at 3:05:41 PM
Convergence at slot	0.50° East	Database	WA_Denver

### WELLPATH LOCATION

	Local coordinates		Grid coordinates		Geographic coordinates	
	North[ft]	East[ft]	Easting[US ft]	Northing[US ft]	Latitude	Longitude
Slot Location	-55.20	23.45	3215534.39	1370971.74	40.3491388°	-104.7266875°
Facility Reference Pt			3215510.94	1371026.94	40.3492909°	-104.7267699°
Field Reference Pt			3296400.32	1413291.61	40.4630000°	-104.4347500°

### WELLPATH DATUM

Calculation method	Minimum Curvature	Rig (4664'GL+25'KB = 4689'RKB) (RKB) to Facility Vertical Datum	4689.00ft
Horizontal Reference Pt	Slot	Rig (4664'GL+25'KB = 4689'RKB) (RKB) to Mean Sea Level	4689.00ft
Vertical Reference Pt	Rig (4664'GL+25'KB = 4689'RKB) (RKB)	Rig (4664'GL+25'KB = 4689'RKB) (RKB) to Ground Level at Slot (SLOT#05 CAPITOL 05N (254'FSL & 2342'FWL,SEC.36))	4689.00ft
MD Reference Pt	Rig (4664'GL+25'KB = 4689'RKB) (RKB)		
Field Vertical Reference	Mean Sea Level		

### POSITIONAL UNCERTAINTY CALCULATION SETTINGS

Ellipse Confidence Limit	3.50 Std Dev	Ellipse Start MD	25.00ft	Surface Position Uncertainty	included
Declination	7.67° East of TN	Dip Angle	66.52°	Mag Field Strength	51611 nT

**POSITIONAL UNCERTAINTY CALCULATION SETTINGS**

Slot Surface Uncertainty @1SD	Horizontal	<b>0.100ft</b>	Vertical	<b>1.000ft</b>
Facility Surface Uncertainty @1SD	Horizontal	<b>8.200ft</b>	Vertical	<b>3.000ft</b>

Positional Uncertainty values in the WELLPATH DATA table are the projection of the ellipsoid of uncertainty onto the vertical and horizontal planes



# Closest Approach Clearance Summary Report

CAPITOL 05N (REV-E.0) PWP - SPE WPTS Stop Drilling HSE Risk (2017)  
Page 2 of 9



REFERENCE WELLPATH IDENTIFICATION			
Operator	PDC ENERGY INC	Well	CAPITOL 05N
Field	WELD COUNTY (NAD83/GRID)	API/Legal	
Facility	SEC.36-T05N-R66W	Wellbore	CAPITOL 05N PWB
Slot	SLOT#05 CAPITOL 05N (254'FSL & 2342'FWL,SEC.36)		

PROXIMITY-SCAN RULE			
Rule Name	SPE WPTS Stop Drilling HSE Risk (2017)	Rule Based On	Ratio
Plane of Rule	Closest Approach	Threshold Value	1.00
Include Casing & Hole Size	yes	Apply Cone of Safety	no

SURVEY PROGRAM - Ref Wellbore: CAPITOL 05N PWB    Ref Wellpath: CAPITOL 05N (REV-E.0) PWP				
Start MD [ft]	End MD [ft]	Positional Uncertainty Model	Log Name/Comment	Wellbore
25.00	1995.00	OWSG MWD rev2 - Standard		CAPITOL 05N PWB
1995.00	22958.44	OWSG MWD rev2 (MS+IFR1)		CAPITOL 05N PWB



# Closest Approach Clearance Summary Report

## CAPITOL 05N (REV-E.0) PWP - SPE WPTS Stop Drilling HSE Risk (2017)

Page 3 of 9



REFERENCE WELLPATH IDENTIFICATION			
Operator	PDC ENERGY INC	Well	CAPITOL 05N
Field	WELD COUNTY (NAD83/GRID)	API/Legal	
Facility	SEC.36-T05N-R66W	Wellbore	CAPITOL 05N PWB
Slot	SLOT#05 CAPITOL 05N (254'FSL & 2342'FWL,SEC.36)		

CALCULATION RANGE & CUTOFF		
From: 25.00ft MD	To: 17125.47ft MD	C-C Cutoff: (none)

OFFSET WELL CLEARANCE SUMMARY (171 Offset Wellpaths selected) Ratios are calculated in Closest Approach plane													
Offset Facility	Offset Slot	Offset Well	Offset Wellbore	Offset Wellpath	Wellbore Status	C-C Clearance Distance			Rule Separation Ratio				
						Ref MD [ft]	Min C-C Clear Dist [ft]	Diverging from MD [ft]	Ref MD of Min Ratio [ft]	Min Ratio	Min Ratio Dvrg from [ft]	Rule Status	
Blackburn Offsets	(HILL STATE 18-36) (05-123-22263)	HILL STATE 18-36	HILL STATE 18-36	OWB\OWB	Abandoned	11223.60	88.30	11223.60	11223.60	0.01	11223.60	FAIL	
Blackburn Offsets	(STATE-ELK 1) (05-123-12916)	STATE-ELK 1	STATE-ELK 1	OWB\OWB	Abandoned	10749.83	469.91	10749.83	10749.83	0.05	10749.83	FAIL	
Blackburn Offsets	(ANDERSON-COOMBS 1) (05-123-11649)	ANDERSON-COOMBS 1	ANDERSON-COOMBS 1	OWB\OWB	Abandoned	14622.40	591.33	14622.40	14622.40	0.07	14622.40	FAIL	
Blackburn Offsets	(ANDERSON COOMBS 6) (05-123-12852)	ANDERSON COOMBS 6	ANDERSON COOMBS 6	OWB\OWB	Abandoned	17125.47	734.59	17125.47	17125.47	0.08	17125.47	FAIL	
Blackburn Offsets	(PEPPLER 3-36) (05-123-13289)	PEPPLER 3-36	PEPPLER 3-36	OWB\OWB	Suspended	10240.39	882.00	10240.39	10240.41	0.10	10240.41	FAIL	
Blackburn Offsets	(CURTIS UNIT 1) (05-123-11914)	CURTIS UNIT 1	CURTIS UNIT 1	OWB\OWB	Abandoned	13177.41	1931.13	13177.41	13177.45	0.23	13177.45	FAIL	
Blackburn Offsets	(ISHIGURO 5) (05-123-12892)	ISHIGURO 5	ISHIGURO 5	OWB\OWB	Abandoned	10767.43	2108.64	10767.43	10767.46	0.25	10767.46	FAIL	
Blackburn Offsets	(REEVE, FREEDA 2-1) (05-123-14918)	REEVE, FREEDA 2-1	REEVE, FREEDA 2-1	OWB\OWB	Abandoned	25.00	1539.05	295.00	6973.87	0.26	6973.87	FAIL	
Blackburn Offsets	(GEMINI K 1-14) (05-123-13870)	GEMINI K 1-14	GEMINI K 1-14	OWB\OWB	Abandoned	6425.00	4271.54	6425.00	6820.48	0.53	6820.48	FAIL	
Blackburn Offsets	(CUNNINGHAM UNIT 1) (05-123-11835)	CUNNINGHAM UNIT 1	CUNNINGHAM UNIT 1	OWB\OWB	Abandoned	14477.19	4559.29	14477.19	14477.57	0.53	14477.57	FAIL	
Blackburn Offsets	(VAUGHAN 12-30) (05-123-12596)	VAUGHAN 12-30	VAUGHAN 12-30	OWB\OWB	Abandoned	15670.70	4801.55	15670.70	15671.18	0.56	15671.18	FAIL	
Blackburn Offsets	(NOE 1-30) (05-123-13288)	NOE 1-30	NOE 1-30	OWB\OWB	Abandoned	13058.13	4859.62	13058.13	13058.48	0.57	13058.48	FAIL	
Blackburn Offsets	(GEMINI K FEDERAL 1-16) (05-123-13872)	GEMINI K FEDERAL 1-16	GEMINI K FEDERAL 1-16	OWB\OWB	Abandoned	6395.18	5096.73	6395.18	6910.41	0.63	6910.41	FAIL	
				OWB\OWB	Suspended	3620.86	5140.30	3620.86	6947.98	0.64	6947.98	FAIL	

<b>OFFSET WELL CLEARANCE SUMMARY</b> (171 Offset Wellpaths selected) Ratios are calculated in Closest Approach plane													
Offset Facility	Offset Slot	Offset Well	Offset Wellbore	Offset Wellpath	Wellbore Status	C-C Clearance Distance			Rule Separation Ratio				
						Ref MD [ft]	Min C-C Clear Dist [ft]	Diverging from MD [ft]	Ref MD of Min Ratio [ft]	Min Ratio	Min Ratio Dvrg from [ft]	Rule Status	
Blackburn Offsets	(GEMINI G FEDERAL 6-33) (05-123-30688)	GEMINI G FEDERAL 6-33	GEMINI G FEDERAL 6-33										
Blackburn Offsets	(STENZEL 1 - 31) (05-123-13295)	STENZEL 1 - 31	STENZEL 1 - 31	OWB\OWB	Abandoned	12112.93	5705.75	12112.93	12113.34	0.67	12113.34	FAIL	
SEC.24-T5N-R66W	SLOT#12 HORII #1 (05-123-11135) PA	HORII #1	HORII #1 AWB	HORII #1 AWP	Abandoned	17125.47	1504.53	17125.47	17125.47	0.69	17125.47	FAIL	
Blackburn Offsets	(SYLVESTER 31-6H5) (05-123-18190)	SYLVESTER 31-6H5	SYLVESTER 31-6H5	OWB\OWB	Abandoned	25.00	5957.04	10673.45	10673.45	0.70	10673.45	FAIL	
Blackburn Offsets	(GOODNER 6-1) (05-123-13912)	GOODNER 6-1	GOODNER 6-1	OWB\OWB	Abandoned	25.00	8445.81	295.00	7280.67	1.08	7280.67	WARN	
SEC.24-T5N-R66W	SLOT#10 DUELL #1 (05-123-11750) PA	DUELL #1	DUELL #1 AWB	DUELL #1 AWP	Abandoned	17125.47	2396.23	17125.47	17125.47	1.11	17125.47	PASS	
SEC.24-T5N-R66W	SLOT#13 HORII #2 (05-123-11748) PA	HORII #2	HORII #2 AWB	HORII #2 AWP	Abandoned	17125.47	2775.12	17125.47	17125.47	1.28	17125.47	PASS	
Blackburn Offsets	(SYLVESTER 36-16H6) (05-123-18113)	SYLVESTER 36-16H6	SYLVESTER 36-16H6	SYLVESTER 36-16H6 AWP	Producing / injecting	25.00	2352.41	8031.87	8031.87	1.50	8031.87	PASS	
SEC.36-T05N-R66W	SLOT#06 CAPITOL 06N (241'FSL & 2348'FWL,SEC.36)	CAPITOL 06N	CAPITOL 06N PWB	CAPITOL 06N (REV-E.0) PWP	Planned	308.38	14.94	17035.79	17035.79	1.51	17035.79	PASS	
Blackburn Offsets	(SYLVESTER 36-9H6) (05-123-12507)	SYLVESTER 36-9H6	SYLVESTER 36-9H6	SYLVESTER 36-9H6 AWP	Producing / injecting	25.00	2759.65	9044.66	9044.66	1.51	9044.66	PASS	
SEC.36-T05N-R66W	SLOT#04 CAPITOL 04N (268'FSL & 2336'FWL,SEC.36)	CAPITOL 04N	CAPITOL 04N PWB	CAPITOL 04N (REV-E.0) PWP	Planned	25.00	15.00	17125.47	17125.47	1.53	17125.47	PASS	
SEC.24-T5N-R66W	SLOT#15 RKW #1 (05-123-10763) PA	RKW #1	RKW #1 AWB	RKW #1 AWP	Abandoned	17125.47	4450.14	17125.47	17125.47	2.05	17125.47	PASS	



# Closest Approach Clearance Summary Report

## CAPITOL 05N (REV-E.0) PWP - SPE WPTS Stop Drilling HSE Risk (2017)

Page 4 of 9



REFERENCE WELLPATH IDENTIFICATION			
Operator	PDC ENERGY INC	Well	CAPITOL 05N
Field	WELD COUNTY (NAD83/GRID)	API/Legal	
Facility	SEC.36-T05N-R66W	Wellbore	CAPITOL 05N PWB
Slot	SLOT#05 CAPITOL 05N (254'FSL & 2342'FWL,SEC.36)		

CALCULATION RANGE & CUTOFF		
From: 25.00ft MD	To: 17125.47ft MD	C-C Cutoff: (none)

OFFSET WELL CLEARANCE SUMMARY (171 Offset Wellpaths selected) Ratios are calculated in Closest Approach plane												
Offset Facility	Offset Slot	Offset Well	Offset Wellbore	Offset Wellpath	Wellbore Status	C-C Clearance Distance			Rule Separation Ratio			
						Ref MD [ft]	Min C-C Clear Dist [ft]	Diverging from MD [ft]	Ref MD of Min Ratio [ft]	Min Ratio	Min Ratio Dvrg from [ft]	Rule Status
Blackburn Offsets	(SYLVESTER 31-12H5) (05-123-18191)	SYLVESTER 31-12H5	SYLVESTER 31-12H5	SYLVESTER 31-12H5 AWP	Producing / injecting	25.00	4181.69	9395.16	9395.16	2.18	9395.16	PASS
SEC.24-T5N-R66W	SLOT#14 MEYER #1 (05-123-12474) PA	MEYER #1	MEYER #1 AWB	MEYER #1 AWP	Abandoned	17125.47	4867.08	17125.47	17125.47	2.24	17125.47	PASS
Blackburn Offsets	(ISHIGURO 17-36) (05-123-25592)	ISHIGURO 17-36	ISHIGURO 17-36	ISHIGURO 17-36 AWP	Producing / injecting	11484.97	2521.35	11484.97	11488.98	2.36	11488.98	PASS
SEC.36-T05N-R66W	SLOT#03 CAPITOL 03N (282'FSL & 2329'FWL,SEC.36)	CAPITOL 03N	CAPITOL 03N PWB	CAPITOL 03N (REV-E.0) PWP	Planned	25.00	30.04	17125.47	17125.47	2.99	17125.47	PASS
Blackburn Offsets	(MCCARTHY FEDERAL 6-33) (05-123-19040)	MCCARTHY FEDERAL 6-33	MCCARTHY FEDERAL 6-33	MCCARTHY FEDERAL 6-33 AWP	Producing / injecting	1560.62	6037.58	1560.62	7018.03	3.01	7018.03	PASS
SEC.36-T05N-R66W	SLOT#07 CAPITOL 07N (227'FSL & 2355'FWL,SEC.36)	CAPITOL 07N	CAPITOL 07N PWB	CAPITOL 07N (REV-E.0) PWP	Planned	303.63	29.96	17015.01	17015.01	3.01	17015.01	PASS
Blackburn Offsets	(MCCARTHY FEDERAL 6-35) (05-123-25323)	MCCARTHY FEDERAL 6-35	MCCARTHY FEDERAL 6-35	MCCARTHY FEDERAL 6-35 AWP	Producing / injecting	25.00	6227.86	295.00	7065.42	3.14	7065.42	PASS
Blackburn Offsets	(LOEFFLER K 01-69-1HN) (05-123-37735)	LOEFFLER K 01-69-1HN	LOEFFLER K 01-69-1HN	OWB\OWB	Producing / injecting	7061.78	248.76	7061.78	7142.44	3.38	7142.44	PASS
Blackburn Offsets	(ANDERSON-COOMBS 2) (05-123-12848)	ANDERSON-COOMBS 2	ANDERSON-COOMBS 2	OWB\OWB	Abandoned	15911.02	560.52	15911.02	15913.24	4.06	15913.24	PASS
Blackburn Offsets	(ANDERSON COOMBS 3) (05-123-12849)	ANDERSON COOMBS 3	ANDERSON COOMBS 3	OWB\OWB	Abandoned	17125.47	628.50	17125.47	17125.47	4.08	17125.47	PASS
SEC.36-T05N-R66W	SLOT#08 CAPITOL 08N (213'FSL & 2361'FWL,SEC.36)	CAPITOL 08N	CAPITOL 08N PWB	CAPITOL 08N (REV-E.0) PWP	Planned	302.43	44.97	17068.23	17068.23	4.51	17068.23	PASS
SEC.36-T05N-R66W	SLOT#02 CAPITOL 02N (296'FSL & 2323'FWL,SEC.36)	CAPITOL 02N	CAPITOL 02N PWB	CAPITOL 02N (REV-E.0) PWP	Planned	25.00	45.02	17125.47	17125.47	4.54	17125.47	PASS
Blackburn Offsets	(GREEN 1) (05-123-11874)	GREEN 1	GREEN 1	OWB\OWB	Abandoned	13310.15	574.73	13310.15	13311.44	5.43	13311.44	PASS
				OWB\OWB	Abandoned	15961.54	790.38	15961.54	16012.62	5.67	16012.62	PASS

OFFSET WELL CLEARANCE SUMMARY (171 Offset Wellpaths selected) Ratios are calculated in Closest Approach plane													
Offset Facility	Offset Slot	Offset Well	Offset Wellbore	Offset Wellpath	Wellbore Status	C-C Clearance Distance			Rule Separation Ratio				
						Ref MD [ft]	Min C-C Clear Dist [ft]	Diverging from MD [ft]	Ref MD of Min Ratio [ft]	Min Ratio	Min Ratio Dvrg from [ft]	Rule Status	
Blackburn Offsets	(ANDERSON COOMBS 5) (05-123-12851)	ANDERSON COOMBS 5	ANDERSON COOMBS 5										
Blackburn Offsets	(AD FED DAIRY 20W-25-13) (05-123-45034)	AD FED DAIRY 20W-25-13	AD FED DAIRY 20W-25-13	OWB\OWB	Producing / injecting	17125.47	2638.86	17125.47	17125.47	5.70	17125.47	PASS	
Blackburn Offsets	(AD FED DAIRY 20W-25-14) (05-123-41138)	AD FED DAIRY 20W-25-14	AD FED DAIRY 20W-25-14	OWB\OWB	Producing / injecting	17125.47	2493.27	17125.47	17125.47	5.72	17125.47	PASS	
Blackburn Offsets	(AD FED DAIRY 20W-25-12) (05-123-40314)	AD FED DAIRY 20W-25-12	AD FED DAIRY 20W-25-12	OWB\OWB	Producing / injecting	17125.47	2783.06	17125.47	17125.47	5.76	17125.47	PASS	
Blackburn Offsets	(AD FED LIBRARY 20W-25-17) (05-123-45033)	AD FED LIBRARY 20W-25-17	AD FED LIBRARY 20W-25-17	OWB\OWB	Suspended	17125.47	2101.38	17125.47	16470.75	5.82	16470.75	PASS	
Blackburn Offsets	(AD FED DAIRY 20W-25-16) (05-123-45937)	AD FED DAIRY 20W-25-16	AD FED DAIRY 20W-25-16	OWB\OWB	Producing / injecting	17125.47	2247.59	17125.47	16672.80	5.90	16672.80	PASS	
Blackburn Offsets	(AD FED LIBRARY 20W-25-18) (05-123-45037)	AD FED LIBRARY 20W-25-18	AD FED LIBRARY 20W-25-18	OWB\OWB	Producing / injecting	17125.47	1974.15	17125.47	16158.56	5.91	16158.56	PASS	
Blackburn Offsets	(AD FED DAIRY 20W-25-15) (05-123-41140)	AD FED DAIRY 20W-25-15	AD FED DAIRY 20W-25-15	OWB\OWB	Producing / injecting	17125.47	2326.57	17125.47	16806.15	5.91	16806.15	PASS	
Blackburn Offsets	(AD FED DAIRY 20W-25-11) (05-123-41146)	AD FED DAIRY 20W-25-11	AD FED DAIRY 20W-25-11	OWB\OWB	Producing / injecting	17125.47	3032.36	17125.47	17125.47	5.92	17125.47	PASS	
SEC.36-T05N-R66W	SLOT#01 CAPITOL 01N (310'FSL & 2317'FWL,SEC.36)	CAPITOL 01N	CAPITOL 01N PWB	CAPITOL 01N (REV-D.0) PWP	Planned	25.00	59.98	17125.47	17125.47	5.98	17125.47	PASS	
Blackburn Offsets	(AD FED DAIRY 20W-25-10) (05-123-45032)	AD FED DAIRY 20W-25-10	AD FED DAIRY 20W-25-10 AWB	OWB\OWB	Producing / injecting	17125.47	3151.34	17125.47	17125.47	6.06	17125.47	PASS	
Blackburn Offsets	(ANDERSON COOMBS 4) (05-123-12850)	ANDERSON COOMBS 4	ANDERSON COOMBS 4	OWB\OWB	Abandoned	14553.26	759.60	14553.26	14616.13	6.20	14616.13	PASS	



# Closest Approach Clearance Summary Report

## CAPITOL 05N (REV-E.0) PWP - SPE WPTS Stop Drilling HSE Risk (2017)

Page 5 of 9



REFERENCE WELLPATH IDENTIFICATION			
Operator	PDC ENERGY INC	Well	CAPITOL 05N
Field	WELD COUNTY (NAD83/GRID)	API/Legal	
Facility	SEC.36-T05N-R66W	Wellbore	CAPITOL 05N PWB
Slot	SLOT#05 CAPITOL 05N (254'FSL & 2342'FWL,SEC.36)		

CALCULATION RANGE & CUTOFF		
From: 25.00ft MD	To: 17125.47ft MD	C-C Cutoff: (none)

OFFSET WELL CLEARANCE SUMMARY (171 Offset Wellpaths selected) Ratios are calculated in Closest Approach plane												
Offset Facility	Offset Slot	Offset Well	Offset Wellbore	Offset Wellpath	Wellbore Status	C-C Clearance Distance			Rule Separation Ratio			
						Ref MD [ft]	Min C-C Clear Dist [ft]	Diverging from MD [ft]	Ref MD of Min Ratio [ft]	Min Ratio	Min Ratio Dvrg from [ft]	Rule Status
Blackburn Offsets	(AD FED DOUBLE CLUTCH 20W-25-9) (05-123-45039)	AD FED DOUBLE CLUTCH 20W-25-9	AD FED DOUBLE CLUTCH 20W-25-9	OWB\OWB	Producing / injecting	17125.47	3514.70	17125.47	17125.47	6.45	17125.47	PASS
Blackburn Offsets	(AD FED DOUBLE CLUTCH 20W-25-8) (05-123-45035)	AD FED DOUBLE CLUTCH 20W-25-8	AD FED DOUBLE CLUTCH 20W-25-8	OWB\OWB	Producing / injecting	17125.47	3719.04	17125.47	17125.47	6.67	17125.47	PASS
Blackburn Offsets	(ISHIGURO 2) (05-123-12900)	ISHIGURO 2	ISHIGURO 2	OWB\OWB	Abandoned	12170.03	671.78	12170.03	12181.06	7.18	12181.06	PASS
Blackburn Offsets	STATE-HUME #90750 (05-123-12899)	STATE-HUME #90750	STATE-HUME #90750	OWB\OWB	Abandoned	11803.20	747.68	11803.20	11870.35	8.30	11870.35	PASS
Blackburn Offsets	(BROWN 1) (05-123-12689)	BROWN 1	BROWN 1	OWB\OWB	Abandoned	9193.04	604.26	9193.04	9196.44	9.22	9196.44	PASS
Blackburn Offsets	(CURTIS 23-25) (05-123-31134)	CURTIS 23-25	CURTIS 23-25	OWB\OWB	Producing / injecting	13979.02	1230.59	13979.02	14017.11	10.15	14017.11	PASS
Blackburn Offsets	(KFKA J 25-13) (05-123-19224)	KFKA J 25-13	KFKA J 25-13	OWB\OWB	Abandoned	13142.02	1080.97	13142.02	13253.56	10.23	13253.56	PASS
Blackburn Offsets	(LOEFFLER K 01-68-1HN) (05-123-35836)	LOEFFLER K 01-68-1HN	LOEFFLER K 01-68-1HN	OWB\OWB	Producing / injecting	6791.97	742.04	6791.97	6885.55	11.07	6885.55	PASS
Blackburn Offsets	(FREEDA REEVE 4-1) (05-123-15319)	FREEDA REEVE 4-1	FREEDA REEVE 4-1	OWB\OWB	Abandoned	4873.54	607.56	4873.54	5406.29	11.77	5406.29	PASS
Blackburn Offsets	(REHMER 36-14H6) (05-123-18686)	REHMER 36-14H6	REHMER 36-14H6	OWB\OWB	Abandoned	313.69	502.64	8025.00	338.06	12.20	8125.00	PASS
Blackburn Offsets	(CURTIS 36-25) (05-123-31207)	CURTIS 36-25	CURTIS 36-25	OWB\OWB	Producing / injecting	12686.71	1329.16	12686.71	12779.83	12.39	12779.83	PASS
Blackburn Offsets	(WASS 4) (05-123-11757)	WASS 4	WASS 4	OWB\OWB	Abandoned	17125.47	1963.58	17125.47	17125.47	12.76	17125.47	PASS
Blackburn Offsets	(PEPPLER 2-36) (05-123-14438)	PEPPLER 2-36	PEPPLER 2-36	OWB\OWB	Abandoned	9210.20	911.38	9210.20	9303.39	13.60	9303.39	PASS
	(WASS 2) (05-123-11668)	WASS 2	WASS 2	OWB\OWB	Abandoned	15875.69	1960.28	15875.69	16025.94	14.20	16025.94	PASS

OFFSET WELL CLEARANCE SUMMARY (171 Offset Wellpaths selected) Ratios are calculated in Closest Approach plane												
Offset Facility	Offset Slot	Offset Well	Offset Wellbore	Offset Wellpath	Wellbore Status	C-C Clearance Distance			Rule Separation Ratio			
						Ref MD [ft]	Min C-C Clear Dist [ft]	Diverging from MD [ft]	Ref MD of Min Ratio [ft]	Min Ratio	Min Ratio Dvrg from [ft]	Rule Status
Blackburn Offsets												
Blackburn Offsets	(AD FED DOUBLE CLUTCH #20W-25-7) (05-123-45036)	AD FED DOUBLE CLUTCH #20W-25-7	AD FED DOUBLE CLUTCH #20W-25-7 AWB	AD FED DOUBLE CLUTCH #20W-25-7 AWP	Producing / injecting	17125.47	3877.58	17125.47	17125.47	14.46	17125.47	PASS
Blackburn Offsets	(ISHIGURO 21-36) (05-123-28121)	ISHIGURO 21-36	ISHIGURO 21-36	OWB\OWB	Abandoned	11345.88	1350.19	11345.88	11453.93	14.53	11453.93	PASS
Blackburn Offsets	(ISHIGURO 25-36) (05-123-28120)	ISHIGURO 25-36	ISHIGURO 25-36	OWb\OWb	Producing / injecting	10055.07	1420.09	10055.07	10278.06	15.08	10278.06	PASS
Blackburn Offsets	(AD FED DOUBLE CLUTCH #20W-25-6) (05-123-45040)	AD FED DOUBLE CLUTCH #20W-25-6	AD FED DOUBLE CLUTCH #20W-25-6 AWB	AD FED DOUBLE CLUTCH #20W-25-6 AWP	Producing / injecting	17125.47	4107.50	17125.47	17125.47	15.17	17125.47	PASS
Blackburn Offsets	(LOEFFLER 1-18) (05-123-11673)	LOEFFLER 1-18	LOEFFLER 1-18	OWB\OWB	Producing / injecting	6683.32	824.93	6683.32	6721.33	15.34	6721.33	PASS
Blackburn Offsets	(AD FED J EVANS #20W-25-5) (05-123-45038)	AD FED J EVANS #20W-25-5	AD FED J EVANS #20W-25-5 AWB	AD FED J EVANS #20W-25-5 AWP	Producing / injecting	17125.47	4304.76	17125.47	17125.47	15.88	17125.47	PASS
Blackburn Offsets	(PEPPLER 1-36) (05-123-13270)	PEPPLER 1-36	PEPPLER 1-36	OWB\OWB	Abandoned	7918.39	965.62	7918.39	7948.54	16.10	7948.54	PASS
Blackburn Offsets	(AD FED J EVANS #20W-25-4) (05-123-41135)	AD FED J EVANS #20W-25-4	AD FED J EVANS #20W-25-4 AWB	AD FED J EVANS #20W-25-4 AWP	Producing / injecting	17125.47	4414.92	17125.47	17125.47	16.13	17125.47	PASS
Blackburn Offsets	(AD FED J EVANS #20W-25-3) (05-123-41133)	AD FED J EVANS #20W-25-3	AD FED J EVANS #20W-25-3 AWB	AD FED J EVANS #20W-25-3 AWP	Producing / injecting	17125.47	4663.39	17125.47	17125.47	16.92	17125.47	PASS
Blackburn Offsets	(LOEFFLER K 01-67-1HN) (05-123-35835)	LOEFFLER K 01-67-1HN	LOEFFLER K 01-67-1HN	OWB\OWB	Suspended	6679.25	1336.81	6679.25	6752.38	17.07	6752.38	PASS
Blackburn Offsets	(WASS 3X) (05-123-13279)	WASS 3X	WASS 3X	OWB\OWB	Abandoned	14574.43	2086.93	14574.43	14771.87	17.16	14771.87	PASS



# Closest Approach Clearance Summary Report

## CAPITOL 05N (REV-E.0) PWP - SPE WPTS Stop Drilling HSE Risk (2017)

Page 6 of 9



REFERENCE WELLPATH IDENTIFICATION			
Operator	PDC ENERGY INC	Well	CAPITOL 05N
Field	WELD COUNTY (NAD83/GRID)	API/Legal	
Facility	SEC.36-T05N-R66W	Wellbore	CAPITOL 05N PWB
Slot	SLOT#05 CAPITOL 05N (254'FSL & 2342'FWL,SEC.36)		

CALCULATION RANGE & CUTOFF		
From: 25.00ft MD	To: 17125.47ft MD	C-C Cutoff: (none)

OFFSET WELL CLEARANCE SUMMARY (171 Offset Wellpaths selected) Ratios are calculated in Closest Approach plane												
Offset Facility	Offset Slot	Offset Well	Offset Wellbore	Offset Wellpath	Wellbore Status	C-C Clearance Distance			Rule Separation Ratio			
						Ref MD [ft]	Min C-C Clear Dist [ft]	Diverging from MD [ft]	Ref MD of Min Ratio [ft]	Min Ratio	Min Ratio Dvrg from [ft]	Rule Status
Blackburn Offsets	(CURTIS 15-25) (05-123-31132)	CURTIS 15-25	CURTIS 15-25	OWB\OWB	Abandoned	13410.74	1847.70	13410.74	13580.04	17.23	13580.04	PASS
Blackburn Offsets	(AD FED J EVANS #20W-25-2) (05-123-45041)	AD FED J EVANS #20W-25-2	AD FED J EVANS #20W-25-2 AWB	AD FED J EVANS #20W-25-2 AWP	Producing / injecting	17125.47	4888.34	17125.47	17125.47	17.66	17125.47	PASS
Blackburn Offsets	(AD FED J EVANS #20W-25-1) (05-123-41137)	AD FED J EVANS #20W-25-1	AD FED J EVANS #20W-25-1 AWB	AD FED J EVANS #20W-25-1 AWP	Producing / injecting	17125.47	4997.93	17125.47	17125.47	18.06	17125.47	PASS
Blackburn Offsets	(WASS 5) (05-123-13781)	WASS 5	WASS 5	OWB\OWB	Abandoned	17000.43	2972.89	17000.43	17125.47	19.40	17125.47	PASS
Blackburn Offsets	(GEMINI K FEDERAL 01-99HZ) (05-123-30686)	GEMINI K FEDERAL 01-99HZ	GEMINI K FEDERAL 01-99HZ	OBW\OBW	Producing / injecting	6525.00	3639.11	6525.00	6657.68	20.90	6657.68	PASS
Blackburn Offsets	(ISHIGURO 1) (05-123-11904)	ISHIGURO 1	ISHIGURO 1	OWB\OWB	Abandoned	12029.54	1950.82	12029.54	12241.07	20.96	12241.07	PASS
Blackburn Offsets	(GP J EVANS FED #20W-20-16) (05-123-41134)	GP J EVANS FED #20W-20-16	GP J EVANS FED #20W-20-16 AWB	GP J EVANS FED #20W-20-16 AWP	Producing / injecting	17125.47	5699.35	17125.47	17125.47	22.98	17125.47	PASS
Blackburn Offsets	(GP HILLSIDE FED #20W-20-15) (05-123-41145)	GP HILLSIDE FED #20W-20-15	GP HILLSIDE FED #20W-20-15 AWB	GP HILLSIDE FED #20W-20-15 AWP	Producing / injecting	17125.47	5871.16	17125.47	17125.47	23.47	17125.47	PASS
Blackburn Offsets	(LOEFFLER K 01-66-1HN ST) (05-123-35834)	LOEFFLER K 01-66-1HN ST	LOEFFLER K 01-66-1HN ST	OWB\OWB	Producing / injecting	6625.00	1969.04	6625.00	6721.35	23.59	6721.35	PASS
Blackburn Offsets	(WASS 6) (05-123-13265)	WASS 6	WASS 6	OWB\OWB	Abandoned	15698.63	3263.89	15698.63	16176.77	23.68	16176.77	PASS
Blackburn Offsets	(GP HILLSIDE FED #20W-20-14) (05-123-44430)	GP HILLSIDE FED #20W-20-14	GP HILLSIDE FED #20W-20-14 AWB	GP HILLSIDE FED #20W-20-14 AWP	Producing / injecting	17125.47	6082.72	17125.47	17125.47	24.15	17125.47	PASS
Blackburn Offsets	(GP HILLSIDE FED #20W-20-13) (05-123-41143)	GP HILLSIDE FED #20W-20-13	GP HILLSIDE FED #20W-20-13 AWB	GP HILLSIDE FED #20W-20-13 AWP	Producing / injecting	17125.47	6319.07	17125.47	17125.47	24.98	17125.47	PASS
Blackburn Offsets	(LOEFFLER K 01-65HN) (05-123-37739)	LOEFFLER K 01-65HN	LOEFFLER K 01-65HN	OWB\OWB	Producing / injecting	6625.00	2195.80	6625.00	6718.79	25.21	6718.79	PASS
	(CURTIS 37-25) (05-123-31136)	CURTIS 37-25	CURTIS 37-25	OWB\OWB	Abandoned	12667.39	2591.06	12667.39	13065.79	25.66	13065.79	PASS

OFFSET WELL CLEARANCE SUMMARY (171 Offset Wellpaths selected) Ratios are calculated in Closest Approach plane												
Offset Facility	Offset Slot	Offset Well	Offset Wellbore	Offset Wellpath	Wellbore Status	C-C Clearance Distance			Rule Separation Ratio			
						Ref MD [ft]	Min C-C Clear Dist [ft]	Diverging from MD [ft]	Ref MD of Min Ratio [ft]	Min Ratio	Min Ratio Dvrg from [ft]	Rule Status
Blackburn Offsets												
Blackburn Offsets	(FREEDA REEVE 3-1) (05-123-15083)	FREEDA REEVE 3-1	FREEDA REEVE 3-1	OWB\OWB	Abandoned	6454.70	1497.63	6454.70	6532.25	25.69	6532.25	PASS
Blackburn Offsets	(CAVANAGH 36-10H6) (05-123-18232)	CAVANAGH 36-10H6	CAVANAGH 36-10H6	OWB\OWB	Abandoned	9226.74	1750.65	9226.74	9416.87	26.04	9416.87	PASS
Blackburn Offsets	(GP-DAIRY 1-20-19) (05-123-40328)	GP-DAIRY 1-20-19	GP-DAIRY 1-20-19 ST01	GP-DAIRY 1-20-19 ST01	Producing / injecting	17125.47	5269.39	17125.47	17125.47	26.53	17125.47	PASS
Blackburn Offsets	(WASS 1) (05-123-10976)	WASS 1	WASS 1	OWB\OWB	Abandoned	14501.82	3344.51	14501.82	15065.44	27.22	15065.44	PASS
Blackburn Offsets	(REHMER 1) (05-123-12607)	REHMER 1	REHMER 1	Wellbore #1OWB\OWB	Abandoned	25.00	1185.18	8025.00	328.80	28.83	9825.00	PASS
Blackburn Offsets	(ISHIGURO 24-36) (05-123-28119)	ISHIGURO 24-36	ISHIGURO 24-36	OWB\OWB	Abandoned	10015.94	2688.30	10015.94	10284.85	29.08	17025.00	PASS
SEC.24-T5N-R66W	SLOT#11 DUELL #2 (05-123-12788) PA	DUELL #2	DUELL #2 AWB	DUELL #2 AWP	Abandoned	17125.47	3386.65	17125.47	17125.47	29.72	17125.47	PASS
Blackburn Offsets	(LOEFFLER K 01-66-1HN) (05-123-35834)	LOEFFLER K 01-66-1HN	LOEFFLER K 01-66-1HN	OWB\OWB	Abandoned	6525.00	2188.73	6525.00	6596.21	32.56	6596.21	PASS
Blackburn Offsets	(LOEFFLER #2-24) (05-123-11888)	LOEFFLER #2-24	LOEFFLER #2-24	OWB\OWB	Producing / injecting	6507.94	1758.56	6507.94	6587.03	33.06	6587.03	PASS
Blackburn Offsets	(ISHIGURO 3) (05-123-12891)	ISHIGURO 3	ISHIGURO 3	OWB\OWB	Abandoned	11900.02	3234.41	11900.02	12565.60	34.83	12565.60	PASS
Blackburn Offsets	(ISHIGURO 30-31) (05-123-28189)	ISHIGURO 30-31	ISHIGURO 30-31	OWB\OWB	Producing / injecting	12469.35	4025.89	12469.35	13583.71	35.00	13583.71	PASS



# Closest Approach Clearance Summary Report

## CAPITOL 05N (REV-E.0) PWP - SPE WPTS Stop Drilling HSE Risk (2017)

Page 7 of 9



REFERENCE WELLPATH IDENTIFICATION			
Operator	PDC ENERGY INC	Well	CAPITOL 05N
Field	WELD COUNTY (NAD83/GRID)	API/Legal	
Facility	SEC.36-T05N-R66W	Wellbore	CAPITOL 05N PWB
Slot	SLOT#05 CAPITOL 05N (254'FSL & 2342'FWL,SEC.36)		

CALCULATION RANGE & CUTOFF		
From: 25.00ft MD	To: 17125.47ft MD	C-C Cutoff: (none)

OFFSET WELL CLEARANCE SUMMARY (171 Offset Wellpaths selected) Ratios are calculated in Closest Approach plane												
Offset Facility	Offset Slot	Offset Well	Offset Wellbore	Offset Wellpath	Wellbore Status	C-C Clearance Distance			Rule Separation Ratio			
						Ref MD [ft]	Min C-C Clear Dist [ft]	Diverging from MD [ft]	Ref MD of Min Ratio [ft]	Min Ratio	Min Ratio Dvrg from [ft]	Rule Status
Blackburn Offsets	(JOHNSON X1 1-1-06) (05-123-26716)	JOHNSON X1 1-1-06	JOHNSON X1 1-1-06	OWB\OWB	Producing / injecting	5811.32	4566.23	5811.32	7181.28	36.78	7181.28	PASS
Blackburn Offsets	(COMMONS Z2 2-2-06) (05-123-26712)	COMMONS Z2 2-2-06	COMMONS Z2 2-2-06	OWB\OWB	Producing / injecting	3410.67	5098.04	3410.67	6711.07	38.89	6711.07	PASS
Blackburn Offsets	(REEVE, FRED A 1-1) (05-123-11780)	REEVE, FRED A 1-1	REEVE, FRED A 1-1	OWB\OWB	Abandoned	3841.40	2244.64	3841.40	6525.00	39.61	6525.00	PASS
Blackburn Offsets	(HAMBLE N 1-30) (05-123-13151) - Could not confirm gyro from ECMC	HAMBLE N 1-30	HAMBLE N 1-30	OWB\OWB	Abandoned	15646.98	5726.19	15646.98	17125.47	39.98	17125.47	PASS
Blackburn Offsets	(ISHIGURO 6) (05-123-12893)	ISHIGURO 6	ISHIGURO 6	OWB\OWB	Abandoned	10656.21	3301.74	10656.21	11452.88	41.37	11452.88	PASS
SEC.24-T5N-R66W	Slot #6 SEGL #7-24 (05-123-23840) PA	SEGL 7-24	SEGL 7-24 AWB	SEGL 7-24 AWP	Drilling	17125.47	4596.94	17125.47	17125.47	41.60	17125.47	PASS
SEC.24-T5N-R66W	Slot #4 SEGL #22-24 (05-123-23842) SI	SEGL 22-24	SEGL 22-24 AWB	SEGL 22-24 AWP	Drilling	17125.47	3263.30	17125.47	17125.47	42.13	17125.47	PASS
Blackburn Offsets	(GEMINI K1-11) (05-123-15177)	GEMINI K1-11	GEMINI K1-11	OWB\OWB	Suspended	6458.43	2549.55	6458.43	6627.90	44.29	6627.90	PASS
Blackburn Offsets	(GEMINI K1-12) (05-123-15197)	GEMINI K1-12	GEMINI K1-12	OWB\OWB	Suspended	6483.83	2666.89	6483.83	6593.91	46.66	6593.91	PASS
Blackburn Offsets	(SYLVESTER F 31-32D) (05-123-33215)	SYLVESTER F 31-32D	SYLVESTER F 31-32D	OWB\OWB	Producing / injecting	9842.80	3883.34	9842.80	10770.83	46.80	10770.83	PASS
Blackburn Offsets	(ISHIGURO 4) (05-123-12924)	ISHIGURO 4	ISHIGURO 4	OWB\OWB	Abandoned	11939.39	4633.06	11939.39	13358.18	48.00	13358.18	PASS
Blackburn Offsets	(CITY OF GREELEY 1-30) (05-123-13152) - Could not confirm gyro from ECMC	CITY OF GREELEY 1-30	CITY OF GREELEY 1-30	OWB\OWB	Abandoned	14112.89	6114.07	14112.89	16091.22	48.39	16091.22	PASS
SEC.24-T5N-R66W	Slot #9 SEGL #17-24 (05-123-23839) PA	SEGL 17-24	SEGL 17-24 AWB	SEGL 17-24 AWP	Drilling	17125.47	5380.60	17125.47	17125.47	48.73	17125.47	PASS
		SYLVESTER 31-5H5	SYLVESTER 31-5H5	OWB\OWB	Abandoned	10554.20	4626.08	10554.20	12160.42	49.51	12160.42	PASS

OFFSET WELL CLEARANCE SUMMARY (171 Offset Wellpaths selected) Ratios are calculated in Closest Approach plane												
Offset Facility	Offset Slot	Offset Well	Offset Wellbore	Offset Wellpath	Wellbore Status	C-C Clearance Distance			Rule Separation Ratio			
						Ref MD [ft]	Min C-C Clear Dist [ft]	Diverging from MD [ft]	Ref MD of Min Ratio [ft]	Min Ratio	Min Ratio Dvrg from [ft]	Rule Status
Blackburn Offsets	(SYLVESTER 31-5H5) (05-123-18189) - Could not verify surveys											
SEC.24-T5N-R66W	SLOT#17 S.E.G.L. #2 (05-123-12475) PA	S.E.G.L. #2	S.E.G.L. #2 AWB	S.E.G.L. #2 AWP	Abandoned	17125.47	3855.58	17125.47	17125.47	49.94	17125.47	PASS
Blackburn Offsets	(CITY OF GREELEY 2-30) (05-123-13160) - Could not confirm gyro from ECMC	CITY OF GREELEY 2-30	CITY OF GREELEY 2-30	OWB\OWB	Abandoned	13275.73	5840.35	13275.73	15222.87	50.53	15222.87	PASS
SEC.24-T5N-R66W	Slot #8 SEGL #21-24X (05-123-23843) PA	SEGL 21-24X	SEGL 21-24X ST AWB	SEGL 21-24X ST AWP	Drilling	17125.47	5022.02	17125.47	17125.47	50.67	17125.47	PASS
SEC.24-T5N-R66W	SLOT#16 S.E.G.L. #1 (05-123-11776) PA	S.E.G.L. #1	S.E.G.L. #1 AWB	S.E.G.L. #1 AWP	Abandoned	17125.47	4026.24	17125.47	17125.47	51.47	17125.47	PASS
SEC.24-T5N-R66W	Slot #8 SEGL #21-24X (05-123-23843) PA	SEGL 21-24X	SEGL 21-24X AWB	SEGL 21-24X AWP	Drilling	17125.47	4953.71	17125.47	17125.47	52.03	17125.47	PASS
Blackburn Offsets	(SYLVESTER 1-1I6) (05-123-18157)	SYLVESTER 1-1I6	SYLVESTER 1-1I6	OWB\OWB	Abandoned	314.60	2371.60	314.60	7411.45	52.59	7411.45	PASS
Blackburn Offsets	(SANDAU X4 3-1-06) (05-123-26717)	SANDAU X4 3-1-06	SANDAU X4 3-1-06	OWB\OWB	Abandoned	696.27	5241.06	696.27	6937.52	52.82	16025.00	PASS
Blackburn Offsets	(SYLVESTER G 06-30D) (05-123-33120)	SYLVESTER G 06-30D	SYLVESTER G 06-30D	OWB\OWB	Producing / injecting	323.49	2363.40	323.49	7291.73	53.62	7291.73	PASS
Blackburn Offsets	(EVANS INDUSTRIAL PARK 2) (05-123-16656)	EVANS INDUSTRIAL PARK 2	EVANS INDUSTRIAL PARK 2	OWB\OWB\	Abandoned	14504.90	7427.72	14504.90	17125.47	54.51	17125.47	PASS
Blackburn Offsets	(SYLVESTER F 31-20D) (05-123-33217)	SYLVESTER F 31-20D	SYLVESTER F 31-20D	OWB\OWB	Abandoned	155.80	4251.07	10025.00	11953.14	59.14	11953.14	PASS
Blackburn Offsets	(EVANS INDUSTRIAL PARK 1) (05-123-16337) - Could not confirm gyro from ECMC	EVANS INDUSTRIAL PARK 1	EVANS INDUSTRIAL PARK 1	OWB\OWB	Abandoned	13355.21	7288.47	13355.21	16300.04	59.42	16300.04	PASS



# Closest Approach Clearance Summary Report

## CAPITOL 05N (REV-E.0) PWP - SPE WPTS Stop Drilling HSE Risk (2017)

Page 8 of 9



REFERENCE WELLPATH IDENTIFICATION			
Operator	PDC ENERGY INC	Well	CAPITOL 05N
Field	WELD COUNTY (NAD83/GRID)	API/Legal	
Facility	SEC.36-T05N-R66W	Wellbore	CAPITOL 05N PWB
Slot	SLOT#05 CAPITOL 05N (254'FSL & 2342'FWL,SEC.36)		

CALCULATION RANGE & CUTOFF		
From: 25.00ft MD	To: 17125.47ft MD	C-C Cutoff: (none)

OFFSET WELL CLEARANCE SUMMARY (171 Offset Wellpaths selected) Ratios are calculated in Closest Approach plane												
Offset Facility	Offset Slot	Offset Well	Offset Wellbore	Offset Wellpath	Wellbore Status	C-C Clearance Distance			Rule Separation Ratio			
						Ref MD [ft]	Min C-C Clear Dist [ft]	Diverging from MD [ft]	Ref MD of Min Ratio [ft]	Min Ratio	Min Ratio Dvrg from [ft]	Rule Status
Blackburn Offsets	(DOVE HILL Z1 2-6-31) (05-123-26713)	DOVE HILL Z1 2-6-31	DOVE HILL Z1 2-6-31	OWB\OWB	Producing / injecting	8593.40	5308.99	8593.40	10200.12	60.31	10200.12	PASS
Blackburn Offsets	(GEMINI K 1-10) (05-123-13869)	GEMINI K 1-10	GEMINI K 1-10	OWB\OWB	Abandoned	6403.52	3503.24	6403.52	6569.17	60.62	6569.17	PASS
Blackburn Offsets	(BRANTNER 30-9) (05-123-13310)	BRANTNER 30-9	BRANTNER 30-9	OWB\OWB	Abandoned	14422.35	8477.43	14422.35	17125.47	60.70	17125.47	PASS
SEC.24-T5N-R66W	Slot #5 SEGL #2-24 (05-123-23841) PA	SEGL 2-24	SEGL 2-24 AWB	SEGL 2-24 AWP	Drilling	17125.47	5827.64	17125.47	17125.47	61.52	17125.47	PASS
SEC.24-T5N-R66W	Slot #2 SEGL #18-24 (05-123-23051) SI	SEGL 18-24	SEGL 18-24 (AWB)	SEGL 18-24 (AWP#1)	Other	17125.47	4705.90	17125.47	17125.47	61.89	17125.47	PASS
Blackburn Offsets	(UNION PACIFIC 1-1) (05-123-14011)	UNION PACIFIC 1-1	UNION PACIFIC 1-1	OWB\OWB	Abandoned	25.00	3172.87	25.00	6718.79	61.92	6718.79	PASS
SEC.24-T5N-R66W	Slot #1 SEGL #3-24 (05-123-20620) PA	SEGL 3-24	SEGL 3-24 (AWB)	SEGL 3-24 (AWP#1)	Other	17125.47	5418.03	17125.47	17125.47	62.07	17125.47	PASS
Blackburn Offsets	(CONNELL X3 3-7-31) (05-123-26715)	CONNELL X3 3-7-31	CONNELL X3 3-7-31	CONNELL X3 3-7-31	Abandoned	318.26	5274.33	7925.00	8366.52	62.37	8366.52	PASS
SEC.24-T5N-R66W	Slot #3 SEGL #4-24 (05-123-23050) SI	SEGL 4-24	SEGL 4-24 (AWB)	SEGL 4-24 (AWP#1)	Other	17125.47	5523.97	17125.47	17125.47	62.65	17125.47	PASS
Blackburn Offsets	(ELLIS Y1 5-1-06) (05-123-25901)	ELLIS Y1 5-1-06	ELLIS Y1 5-1-06	OWB\OWB	Abandoned	25.00	5581.03	25.00	6679.01	62.79	17125.00	PASS
Blackburn Offsets	(SYLVESTER F 31-33) (05-123-33216)	SYLVESTER F 31-33	SYLVESTER F 31-33	OWB\OWB	Producing / injecting	322.49	3400.60	8625.00	10068.41	63.35	10068.41	PASS
Blackburn Offsets	(BRANTNER 30-16) (05-123-13282)	BRANTNER 30-16	BRANTNER 30-16	OWB\OWB	Abandoned	13417.81	8650.49	13417.81	17125.47	66.73	17125.47	PASS
Blackburn Offsets	(GP-DAIRY 1-20-19) (05-123-40328)	GP-DAIRY 1-20-19	GP-DAIRY 1-20-19	OWB\OWB	Producing / injecting	17125.47	11505.78	17125.47	17125.47	67.14	17125.47	PASS
				OWB\OWB		6390.33	6130.11	6390.33	6644.76	68.08	6644.76	PASS

<b>OFFSET WELL CLEARANCE SUMMARY</b> (171 Offset Wellpaths selected) Ratios are calculated in Closest Approach plane													
Offset Facility	Offset Slot	Offset Well	Offset Wellbore	Offset Wellpath	Wellbore Status	C-C Clearance Distance			Rule Separation Ratio				
						Ref MD [ft]	Min C-C Clear Dist [ft]	Diverging from MD [ft]	Ref MD of Min Ratio [ft]	Min Ratio	Min Ratio Dvrg from [ft]	Rule Status	
Blackburn Offsets	(SHAMROCK FEDERAL PC G 07-30D) (05-123-34885)	SHAMROCK FEDERAL PC G 07-30D	SHAMROCK FEDERAL PC G 07-30D		Producing / injecting								
Blackburn Offsets	(COLE X6 4-8-31) (05-123-31836)	COLE X6 4-8-31	COLE X6 4-8-31	OWB\OWB	Abandoned	202.44	5320.66	7725.00	6649.75	68.15	6649.75	PASS	
Blackburn Offsets	(STEWARTS Z4 6-2-06) (05-123-26711) - Need actual survey data	STEWARTS Z4 6-2-06	STEWARTS Z4 6-2-06	OWB\OWB	Abandoned	25.00	5596.75	7525.00	6925.00	69.29	15925.00	PASS	
Blackburn Offsets	(HAYS 31-2H5) (05-123-18211)	HAYS 31-2H5	HAYS 31-2H5	OWB\OWB	Abandoned	11558.14	7327.63	11558.14	15012.01	69.95	15012.01	PASS	
Blackburn Offsets	(VALLEY PACK X5 3-5-31) (05-123-26714)	VALLEY PACK X5 3-5-31	VALLEY PACK X5 3-5-31	OWB\OWB	Abandoned	295.70	5305.00	9325.00	11693.60	70.01	11693.60	PASS	
Blackburn Offsets	(GEMINI K 1-13) (05-123-17669)	GEMINI K 1-13	GEMINI K 1-13	OWB\OWB	Abandoned	6491.61	4284.73	6491.61	6676.79	71.04	6676.79	PASS	
Blackburn Offsets	(GEMINI K1-9) (05-123-13879)	GEMINI K1-9	GEMINI K1-9	OWB\OWB	Abandoned	3591.31	4257.15	3591.31	6632.07	73.31	6632.07	PASS	
Blackburn Offsets	(SYLVESTER 1) (05-123-12010)	SYLVESTER 1	SYLVESTER 1	OWB\OWB	Abandoned	306.35	3675.70	8025.00	9575.72	73.35	9575.72	PASS	
Blackburn Offsets	(RE-1 X7 4-6-31) (05-123-31863)	RE-1 X7 4-6-31	RE-1 X7 4-6-31	OWB\OWB	Abandoned	25.00	5339.15	8525.00	10279.09	74.80	10279.09	PASS	
Blackburn Offsets	(HAYS 31-1H5) (05-123-11327)	HAYS 31-1H5	HAYS 31-1H5	OWB\OWB	Abandoned	11877.54	8550.31	11877.54	16319.82	75.59	16319.82	PASS	
Blackburn Offsets	(GEMINI K FEDERAL 1-15) (05-123-13871)	GEMINI K FEDERAL 1-15	GEMINI K FEDERAL 1-15	OWB\OWB	Abandoned	6414.76	4505.06	6414.76	6604.46	77.63	6604.46	PASS	
Blackburn Offsets	(MAIN Y3 6-8-31) (05-123-31835)	MAIN Y3 6-8-31	MAIN Y3 6-8-31	OWB\OWB	Suspended	305.20	5851.62	8225.00	7025.00	78.89	15925.00	PASS	



# Closest Approach Clearance Summary Report

## CAPITOL 05N (REV-E.0) PWP - SPE WPTS Stop Drilling HSE Risk (2017)

Page 9 of 9



REFERENCE WELLPATH IDENTIFICATION			
Operator	PDC ENERGY INC	Well	CAPITOL 05N
Field	WELD COUNTY (NAD83/GRID)	API/Legal	
Facility	SEC.36-T05N-R66W	Wellbore	CAPITOL 05N PWB
Slot	SLOT#05 CAPITOL 05N (254'FSL & 2342'FWL,SEC.36)		

CALCULATION RANGE & CUTOFF		
From: 25.00ft MD	To: 17125.47ft MD	C-C Cutoff: (none)

OFFSET WELL CLEARANCE SUMMARY (171 Offset Wellpaths selected) Ratios are calculated in Closest Approach plane												
Offset Facility	Offset Slot	Offset Well	Offset Wellbore	Offset Wellpath	Wellbore Status	C-C Clearance Distance			Rule Separation Ratio			
						Ref MD [ft]	Min C-C Clear Dist [ft]	Diverging from MD [ft]	Ref MD of Min Ratio [ft]	Min Ratio	Min Ratio Dvrg from [ft]	Rule Status
Blackburn Offsets	(LASALLE PARK Y5 5-5-31) (05-123-25898)	LASALLE PARK Y5 5-5-31	LASALLE PARK Y5 5-5-31	OWB\OWB	Producing / injecting	405.54	5622.96	9125.00	12647.97	81.63	14125.00	PASS
Blackburn Offsets	(DABCO 1) (05-123-10955)	DABCO 1	DABCO 1	OWB\OWB	Abandoned	344.57	4322.32	344.57	6734.30	83.79	6734.30	PASS
Blackburn Offsets	(HAYS FEDERAL 31-8H5)(05-123-18213)	HAYS FEDERAL 31-8H5	HAYS FEDERAL 31-8H5	OWB\OWB	Abandoned	324.09	8020.14	10525.00	15344.17	84.53	15344.17	PASS
Blackburn Offsets	(HUMAN BEAN Y2 5-7-31) (05-123-25900)	HUMAN BEAN Y2 5-7-31	HUMAN BEAN Y2 5-7-31	OWB\OWB	Abandoned	325.00	5643.85	8525.00	6725.00	86.41	13425.00	PASS
Blackburn Offsets	(DABCO 2) (05-123-11528)	DABCO 2	DABCO 2	OWB\OWB	Abandoned	25.00	5420.07	295.00	7025.00	87.35	7025.00	PASS
Blackburn Offsets	(GOODNER Y4 7-1-06) (05-123-25899)	GOODNER Y4 7-1-06	GOODNER Y4 7-1-06	OWB\OWB	Abandoned	25.00	5613.38	8325.00	6506.94	89.92	16125.00	PASS
Blackburn Offsets	(H&S 1) (05-123-11529)	H&S 1	H&S 1	OWB\OWB	Abandoned	99.27	5062.27	99.27	6725.00	90.69	6725.00	PASS
Blackburn Offsets	(FARMERS Y7 6-6-31) (05-123-25896)	FARMERS Y7 6-6-31	FARMERS Y7 6-6-31	OWB\OWB	Abandoned	296.19	5883.51	9225.00	7227.95	91.18	15225.00	PASS
Blackburn Offsets	(MCCOUTCHEONS Y8 7-5-31) (05-123-25895)	MCCOUTCHEONS Y8 7-5-31	MCCOUTCHEONS Y8 7-5-31	OWB\OWB	Abandoned	269.20	5896.00	9725.00	15582.08	92.98	15582.08	PASS
Blackburn Offsets	(SHAMROCK FEDERAL G 07-29D) (05-123-34884)	SHAMROCK FEDERAL G 07-29D	SHAMROCK FEDERAL G 07-29D	OWB\OWB	Producing / injecting	523.14	6906.46	523.14	6758.40	94.92	6758.40	PASS
Blackburn Offsets	(BALLFIELD Y6 7-7-31) (05-123-25897)	BALLFIELD Y6 7-7-31	BALLFIELD Y6 7-7-31	OWB\OWB	Abandoned	363.94	5861.12	9025.00	15162.78	96.32	15925.00	PASS
Blackburn Offsets	(AMBER FEDERAL G06-21D) (05-123-34902)	AMBER FEDERAL G06-21D	AMBER FEDERAL G06-21D	OWB\OWB	Suspended	4806.89	6871.30	4806.89	6679.54	98.15	6679.54	PASS
Blackburn Offsets	(GOODNER G FEDERAL 6-11) (05-123-12314)	GOODNER G FEDERAL 6-11	GOODNER G FEDERAL 6-11	OWB\OWB	Producing / injecting	343.85	6109.80	343.85	6825.00	111.93	6825.00	PASS
		AMBER FEDERAL G06-22D	AMBER FEDERAL G06-22D	OWB\OWB	Suspended	3737.50	7952.53	3737.50	7003.22	113.05	7003.22	PASS

**OFFSET WELL CLEARANCE SUMMARY** (171 Offset Wellpaths selected) Ratios are calculated in Closest Approach plane

Offset Facility	Offset Slot	Offset Well	Offset Wellbore	Offset Wellpath	Wellbore Status	C-C Clearance Distance			Rule Separation Ratio			
						Ref MD [ft]	Min C-C Clear Dist [ft]	Diverging from MD [ft]	Ref MD of Min Ratio [ft]	Min Ratio	Min Ratio Dvrg from [ft]	Rule Status
Blackburn Offsets	(AMBER FEDERAL G06-22D) (05-123-34904)											
Blackburn Offsets	(CURTIS G 6-8) (05-123-21981)	CURTIS G 6-8	CURTIS G 6-8	OWB\OWB	Abandoned	303.38	6932.70	303.38	11459.87	114.80	11459.87	PASS
Blackburn Offsets	(AMBER G 05-32D) (05-123-34903)	AMBER G 05-32D	AMBER G 05-32D	OWB\OWB	Suspended	25.00	8136.69	25.00	7178.17	120.10	10525.00	PASS
Blackburn Offsets	(MCCARTHY 1) (05-123-10630)	MCCARTHY 1	MCCARTHY 1	OWB\OWB	Abandoned	492.58	6940.98	492.58	6814.97	122.64	6814.97	PASS
Blackburn Offsets	(CURTIS G 6-7) (05-123-19429)	CURTIS G 6-7	CURTIS G 6-7	OWB\OWB	Suspended	322.49	6783.49	322.49	7053.98	127.70	7053.98	PASS
Blackburn Offsets	(DEVOTIE #1-6) (05-123-11773)	DEVOTIE #1-6	DEVOTIE #1-6	OWB\OWB	Abandoned	326.99	7256.75	326.99	6915.74	133.64	6915.74	PASS
Blackburn Offsets	(DEVOTIE 2-6) (05-123-14919)	DEVOTIE 2-6	DEVOTIE 2-6	OWB\OWB	Abandoned	296.88	7963.70	296.88	6814.26	137.98	6814.26	PASS
Blackburn Offsets	(MERCURE 6-1) (05-123-13626)	MERCURE 6-1	MERCURE 6-1	OWB\OWB	Abandoned	305.61	9061.29	305.61	6825.00	161.26	11425.00	PASS