

PDC ENERGY INC

Location: COLORADO Slot: SLOT#07 CAPITOL 07N (227'FSL & 2355'FWL, SEC.36)
 Field: WELD COUNTY (NAD83/GRID) Well: CAPITOL 07N
 Facility: SEC.36-T05N-R66W Wellbore: CAPITOL 07N PWB

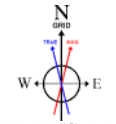
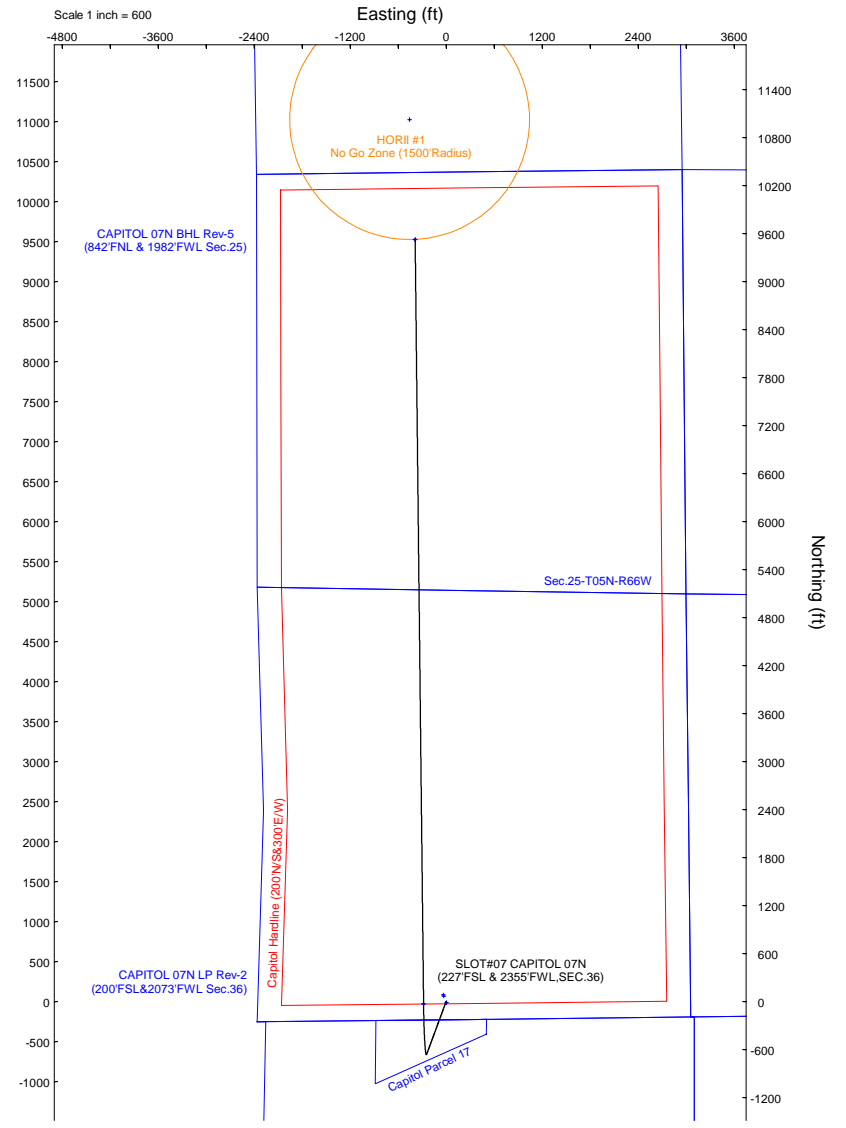
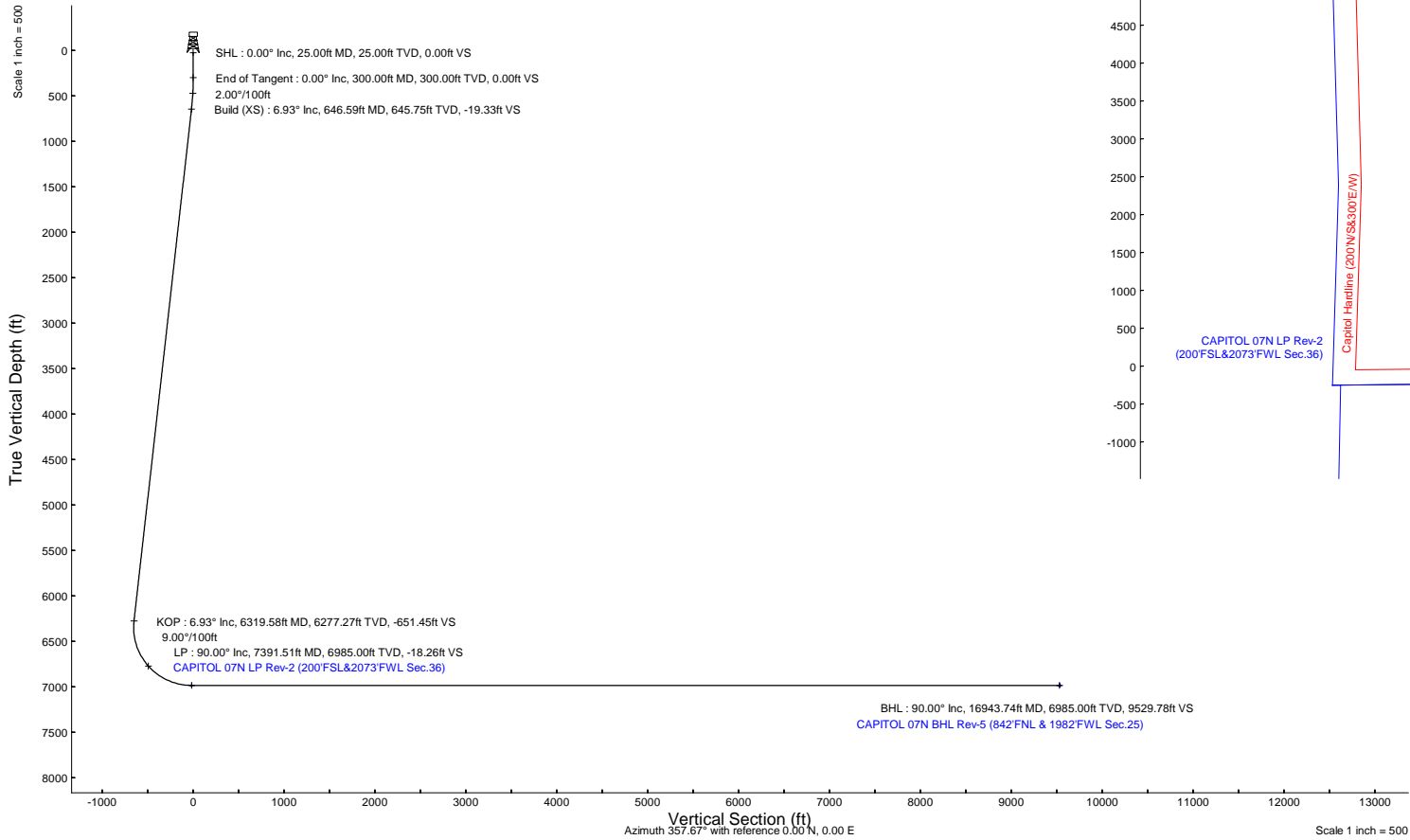
| | |
|--|--|
| Plot reference wellpath is CAPITOL 07N (REV-E.0) PWP | Grid System: NAD83 / Lambert Colorado SP, Northern Zone (501), US feet |
| True vertical depths are referenced to Rig (4664'GL+25'KB = 4689'RKB) (RKB) | North Reference: Grid north |
| Reference wellpath measured depths are referenced to Rig (4664'GL+25'KB = 4689'RKB) (RKB) | Scale: True distance |
| Rig (4664'GL+25'KB = 4689'RKB) (RKB) to Mean Sea Level: 4689 feet | Coordinates are in feet referenced to Slot |
| Mean Sea Level to Ground level (At Slot: SLOT#07 CAPITOL 07N (227'FSL & 2355'FWL, SEC.36)): 0 feet | Depths are in feet |
| Offset wellpath MDs are referenced to each path's default MD datum | Created by: guenaler on 2025-06-20; Database: WA, Denver |

Location Information

| Facility Name | | Grid East (US ft) | Grid North (US ft) | Latitude | Longitude | |
|--|--------------|-------------------|--------------------|--------------------|------------------|------------------|
| SEC.36-T05N-R66W | | 3215510.944 | 1371026.935 | 40°20'57.4472"N | 104°43'36.3718"W | |
| Slot | Local N (ft) | Local E (ft) | Grid East (US ft) | Grid North (US ft) | Latitude | Longitude |
| SLOT#07 CAPITOL 07N (227'FSL & 2355'FWL, SEC.36) | -82.76 | 35.20 | 3215548.143 | 1370944.180 | 40°20'56.6264"N | 104°43'35.9263"W |
| Rig (4664'GL+25'KB = 4689'RKB) (RKB) to Ground level (At Slot: SLOT#07 CAPITOL 07N (227'FSL & 2355'FWL, SEC.36)) | | | | | 4689ft | |
| Mean Sea Level to Ground level (At Slot: SLOT#07 CAPITOL 07N (227'FSL & 2355'FWL, SEC.36)) | | | | | 0ft | |
| Rig (4664'GL+25'KB = 4689'RKB) (RKB) to Mean Sea Level | | | | | 4689ft | |

Well Profile Data

| Design Comment | MD (ft) | Inc (°) | Az (°) | TVD (ft) | Local N (ft) | Local E (ft) | DLS (°/100ft) | VS (ft) |
|----------------|----------|---------|---------|----------|--------------|--------------|---------------|---------|
| SHL | 25.00 | 0.00 | 200.265 | 25.00 | 0.00 | 0.00 | 0.00 | 0.00 |
| End of Tangent | 300.00 | 0.00 | 200.265 | 300.00 | 0.00 | 0.00 | 0.00 | 0.00 |
| Build (XS) | 646.59 | 6.93 | 200.265 | 645.75 | -19.64 | -7.25 | 2.00 | -19.33 |
| KOP | 6319.58 | 6.93 | 200.265 | 6277.27 | -661.93 | -244.40 | 0.00 | -651.45 |
| LP | 7391.51 | 90.00 | 359.369 | 6985.00 | -29.74 | -282.05 | 9.00 | -18.26 |
| BHL | 16943.74 | 90.00 | 359.369 | 6985.00 | 9521.91 | -387.26 | 0.00 | 9529.78 |



HDGM2024v1.0 (1900.0 to 2025.0) Dip: 66.52° Field: 51611.1 nT
 Magnetic North is 7.67 degrees East of True North (at 5/22/2024)
 Grid North is 0.50 degrees East of True North
 To correct azimuth from True to Grid subtract 0.50 degrees
 To correct azimuth from Magnetic to Grid add 7.17 degrees



Planned Wellpath Report

CAPITOL 07N (REV-E.0) PWP

Page 1 of 9



REFERENCE WELLPATH IDENTIFICATION

| | | | |
|----------|---|-----------|-----------------|
| Operator | PDC ENERGY INC | Well | CAPITOL 07N |
| Field | WELD COUNTY (NAD83/GRID) | API/Legal | |
| Facility | SEC.36-T05N-R66W | Wellbore | CAPITOL 07N PWB |
| Slot | SLOT#07 CAPITOL 07N (227'FSL & 2355'FWL,SEC.36) | | |

REPORT SETUP INFORMATION

| | | | |
|---------------------|---|------------------|-------------------------|
| Projection System | NAD83 / Lambert Colorado SP, Northern Zone (501), US feet | Software System | WellArchitect® 6.0 |
| North Reference | Grid | User | Guenaler |
| Scale | 0.999958 | Report Generated | 6/20/2025 at 2:52:10 PM |
| Convergence at slot | 0.50° East | Database | WA_Denver |

WELLPATH LOCATION

| | Local coordinates | | Grid coordinates | | Geographic coordinates | |
|-----------------------|-------------------|----------|------------------|-----------------|------------------------|---------------|
| | North[ft] | East[ft] | Easting[US ft] | Northing[US ft] | Latitude | Longitude |
| Slot Location | -82.76 | 35.20 | 3215546.14 | 1370944.18 | 40.3490629° | -104.7266462° |
| Facility Reference Pt | | | 3215510.94 | 1371026.94 | 40.3492909° | -104.7267699° |
| Field Reference Pt | | | 3296400.32 | 1413291.61 | 40.4630000° | -104.4347500° |

WELLPATH DATUM

| | | | |
|--------------------------|--------------------------------------|--|-------------------|
| Calculation method | Minimum curvature | Rig (4664'GL+25'KB = 4689'RKB) (RKB) to Facility Vertical Datum | 4689.00ft |
| Horizontal Reference Pt | Slot | Rig (4664'GL+25'KB = 4689'RKB) (RKB) to Mean Sea Level | 4689.00ft |
| Vertical Reference Pt | Rig (4664'GL+25'KB = 4689'RKB) (RKB) | Rig (4664'GL+25'KB = 4689'RKB) (RKB) to Ground Level at Slot (SLOT#07 CAPITOL 07N (227'FSL & 2355'FWL,SEC.36)) | 4689.00ft |
| MD Reference Pt | Rig (4664'GL+25'KB = 4689'RKB) (RKB) | Section Origin | N 0.00, E 0.00 ft |
| Field Vertical Reference | Mean Sea Level | Section Azimuth | 357.67° |



Planned Wellpath Report

CAPITOL 07N (REV-E.0) PWP

Page 2 of 9



REFERENCE WELLPATH IDENTIFICATION

| | | | |
|----------|---|-----------|-----------------|
| Operator | PDC ENERGY INC | Well | CAPITOL 07N |
| Field | WELD COUNTY (NAD83/GRID) | API/Legal | |
| Facility | SEC.36-T05N-R66W | Wellbore | CAPITOL 07N PWB |
| Slot | SLOT#07 CAPITOL 07N (227'FSL & 2355'FWL,SEC.36) | | |

WELLPATH DATA (188 stations) † = interpolated, ‡ = extrapolated station

| MD [ft] | Inclination [°] | Azimuth [°] | TVD [ft] | Vert Sect [ft] | North [ft] | East [ft] | Latitude | Longitude | DLS [°/100ft] | Comments |
|----------|-----------------|-------------|----------|----------------|------------|-----------|------------|--------------|---------------|-----------------------------|
| 0.00† | 0.000 | 200.265 | 0.00 | 0.00 | 0.00 | 0.00 | 40.3490629 | -104.7266462 | 0.00 | |
| 25.00 | 0.000 | 200.265 | 25.00 | 0.00 | 0.00 | 0.00 | 40.3490629 | -104.7266462 | 0.00 | SHL |
| 125.00† | 0.000 | 200.265 | 125.00 | 0.00 | 0.00 | 0.00 | 40.3490629 | -104.7266462 | 0.00 | |
| 225.00† | 0.000 | 200.265 | 225.00 | 0.00 | 0.00 | 0.00 | 40.3490629 | -104.7266462 | 0.00 | |
| 300.00 | 0.000 | 200.265 | 300.00 | 0.00 | 0.00 | 0.00 | 40.3490629 | -104.7266462 | 0.00 | End of Tangent |
| 325.00† | 0.500 | 200.265 | 325.00 | -0.10 | -0.10 | -0.04 | 40.3490626 | -104.7266463 | 2.00 | |
| 425.00† | 2.500 | 200.265 | 424.96 | -2.52 | -2.56 | -0.94 | 40.3490559 | -104.7266497 | 2.00 | |
| 525.00† | 4.500 | 200.265 | 524.77 | -8.15 | -8.28 | -3.06 | 40.3490402 | -104.7266574 | 2.00 | |
| 625.00† | 6.500 | 200.265 | 624.30 | -17.00 | -17.28 | -6.38 | 40.3490156 | -104.7266696 | 2.00 | |
| 646.59 | 6.932 | 200.265 | 645.75 | -19.33 | -19.64 | -7.25 | 40.3490091 | -104.7266728 | 2.00 | Build (XS) |
| 725.00† | 6.932 | 200.265 | 723.58 | -28.07 | -28.52 | -10.53 | 40.3489849 | -104.7266849 | 0.00 | |
| 825.00† | 6.932 | 200.265 | 822.85 | -39.21 | -39.84 | -14.71 | 40.3489539 | -104.7267002 | 0.00 | |
| 925.00† | 6.932 | 200.265 | 922.12 | -50.35 | -51.16 | -18.89 | 40.3489229 | -104.7267156 | 0.00 | |
| 1025.00† | 6.932 | 200.265 | 1021.39 | -61.50 | -62.49 | -23.07 | 40.3488919 | -104.7267309 | 0.00 | |
| 1125.00† | 6.932 | 200.265 | 1120.66 | -72.64 | -73.81 | -27.25 | 40.3488610 | -104.7267463 | 0.00 | |
| 1225.00† | 6.932 | 200.265 | 1219.93 | -83.78 | -85.13 | -31.43 | 40.3488300 | -104.7267616 | 0.00 | |
| 1325.00† | 6.932 | 200.265 | 1319.20 | -94.93 | -96.45 | -35.61 | 40.3487990 | -104.7267770 | 0.00 | |
| 1333.87† | 6.932 | 200.265 | 1328.00 | -95.91 | -97.46 | -35.98 | 40.3487963 | -104.7267783 | 0.00 | PIERRE_(UPPER)_AQUIFER_BASE |
| 1425.00† | 6.932 | 200.265 | 1418.47 | -106.07 | -107.77 | -39.79 | 40.3487680 | -104.7267923 | 0.00 | |
| 1525.00† | 6.932 | 200.265 | 1517.73 | -117.21 | -119.10 | -43.97 | 40.3487370 | -104.7268077 | 0.00 | |
| 1625.00† | 6.932 | 200.265 | 1617.00 | -128.35 | -130.42 | -48.15 | 40.3487061 | -104.7268230 | 0.00 | |
| 1725.00† | 6.932 | 200.265 | 1716.27 | -139.50 | -141.74 | -52.33 | 40.3486751 | -104.7268384 | 0.00 | |
| 1825.00† | 6.932 | 200.265 | 1815.54 | -150.64 | -153.06 | -56.51 | 40.3486441 | -104.7268537 | 0.00 | |
| 1925.00† | 6.932 | 200.265 | 1914.81 | -161.78 | -164.38 | -60.69 | 40.3486131 | -104.7268691 | 0.00 | |
| 2025.00† | 6.932 | 200.265 | 2014.08 | -172.92 | -175.70 | -64.87 | 40.3485822 | -104.7268844 | 0.00 | |
| 2125.00† | 6.932 | 200.265 | 2113.35 | -184.07 | -187.03 | -69.05 | 40.3485512 | -104.7268998 | 0.00 | |
| 2225.00† | 6.932 | 200.265 | 2212.62 | -195.21 | -198.35 | -73.23 | 40.3485202 | -104.7269151 | 0.00 | |
| 2301.94† | 6.932 | 200.265 | 2289.00 | -203.78 | -207.06 | -76.45 | 40.3484964 | -104.7269269 | 0.00 | PIERRE_MBR_A_SD_TOP |
| 2325.00† | 6.932 | 200.265 | 2311.89 | -206.35 | -209.67 | -77.41 | 40.3484892 | -104.7269305 | 0.00 | |
| 2425.00† | 6.932 | 200.265 | 2411.16 | -217.49 | -220.99 | -81.59 | 40.3484583 | -104.7269458 | 0.00 | |



Planned Wellpath Report

CAPITOL 07N (REV-E.0) PWP

Page 3 of 9



REFERENCE WELLPATH IDENTIFICATION

| | | | |
|----------|---|-----------|-----------------|
| Operator | PDC ENERGY INC | Well | CAPITOL 07N |
| Field | WELD COUNTY (NAD83/GRID) | API/Legal | |
| Facility | SEC.36-T05N-R66W | Wellbore | CAPITOL 07N PWB |
| Slot | SLOT#07 CAPITOL 07N (227'FSL & 2355'FWL,SEC.36) | | |

WELLPATH DATA (188 stations) † = interpolated, ‡ = extrapolated station

| MD [ft] | Inclination [°] | Azimuth [°] | TVD [ft] | Vert Sect [ft] | North [ft] | East [ft] | Latitude | Longitude | DLS [°/100ft] | Comments |
|----------|-----------------|-------------|----------|----------------|------------|-----------|------------|--------------|---------------|----------------------|
| 2525.00† | 6.932 | 200.265 | 2510.42 | -228.64 | -232.31 | -85.78 | 40.3484273 | -104.7269612 | 0.00 | |
| 2625.00† | 6.932 | 200.265 | 2609.69 | -239.78 | -243.63 | -89.96 | 40.3483963 | -104.7269765 | 0.00 | |
| 2725.00† | 6.932 | 200.265 | 2708.96 | -250.92 | -254.96 | -94.14 | 40.3483653 | -104.7269919 | 0.00 | |
| 2825.00† | 6.932 | 200.265 | 2808.23 | -262.06 | -266.28 | -98.32 | 40.3483344 | -104.7270072 | 0.00 | |
| 2834.84† | 6.932 | 200.265 | 2818.00 | -263.16 | -267.39 | -98.73 | 40.3483313 | -104.7270087 | 0.00 | PIERRE_MBR_A_SD_BASE |
| 2925.00† | 6.932 | 200.265 | 2907.50 | -273.21 | -277.60 | -102.50 | 40.3483034 | -104.7270226 | 0.00 | |
| 3025.00† | 6.932 | 200.265 | 3006.77 | -284.35 | -288.92 | -106.68 | 40.3482724 | -104.7270379 | 0.00 | |
| 3125.00† | 6.932 | 200.265 | 3106.04 | -295.49 | -300.24 | -110.86 | 40.3482414 | -104.7270533 | 0.00 | |
| 3225.00† | 6.932 | 200.265 | 3205.31 | -306.63 | -311.57 | -115.04 | 40.3482105 | -104.7270686 | 0.00 | |
| 3325.00† | 6.932 | 200.265 | 3304.58 | -317.78 | -322.89 | -119.22 | 40.3481795 | -104.7270840 | 0.00 | |
| 3425.00† | 6.932 | 200.265 | 3403.85 | -328.92 | -334.21 | -123.40 | 40.3481485 | -104.7270993 | 0.00 | |
| 3525.00† | 6.932 | 200.265 | 3503.12 | -340.06 | -345.53 | -127.58 | 40.3481175 | -104.7271147 | 0.00 | |
| 3625.00† | 6.932 | 200.265 | 3602.38 | -351.20 | -356.85 | -131.76 | 40.3480865 | -104.7271300 | 0.00 | |
| 3650.80† | 6.932 | 200.265 | 3628.00 | -354.08 | -359.77 | -132.84 | 40.3480786 | -104.7271340 | 0.00 | PARKMAN |
| 3725.00† | 6.932 | 200.265 | 3701.65 | -362.35 | -368.17 | -135.94 | 40.3480556 | -104.7271454 | 0.00 | |
| 3825.00† | 6.932 | 200.265 | 3800.92 | -373.49 | -379.50 | -140.12 | 40.3480246 | -104.7271607 | 0.00 | |
| 3925.00† | 6.932 | 200.265 | 3900.19 | -384.63 | -390.82 | -144.30 | 40.3479936 | -104.7271761 | 0.00 | |
| 4025.00† | 6.932 | 200.265 | 3999.46 | -395.77 | -402.14 | -148.48 | 40.3479626 | -104.7271914 | 0.00 | |
| 4117.21† | 6.932 | 200.265 | 4091.00 | -406.05 | -412.58 | -152.33 | 40.3479341 | -104.7272056 | 0.00 | SUSSEX |
| 4125.00† | 6.932 | 200.265 | 4098.73 | -406.92 | -413.46 | -152.66 | 40.3479317 | -104.7272068 | 0.00 | |
| 4225.00† | 6.932 | 200.265 | 4198.00 | -418.06 | -424.78 | -156.84 | 40.3479007 | -104.7272221 | 0.00 | |
| 4325.00† | 6.932 | 200.265 | 4297.27 | -429.20 | -436.10 | -161.02 | 40.3478697 | -104.7272375 | 0.00 | |
| 4425.00† | 6.932 | 200.265 | 4396.54 | -440.34 | -447.43 | -165.20 | 40.3478387 | -104.7272528 | 0.00 | |
| 4525.00† | 6.932 | 200.265 | 4495.81 | -451.49 | -458.75 | -169.38 | 40.3478078 | -104.7272682 | 0.00 | |
| 4625.00† | 6.932 | 200.265 | 4595.07 | -462.63 | -470.07 | -173.56 | 40.3477768 | -104.7272835 | 0.00 | |
| 4725.00† | 6.932 | 200.265 | 4694.34 | -473.77 | -481.39 | -177.74 | 40.3477458 | -104.7272989 | 0.00 | |
| 4814.31† | 6.932 | 200.265 | 4783.00 | -483.72 | -491.50 | -181.47 | 40.3477181 | -104.7273126 | 0.00 | SHANNON |
| 4825.00† | 6.932 | 200.265 | 4793.61 | -484.91 | -492.71 | -181.92 | 40.3477148 | -104.7273142 | 0.00 | |
| 4925.00† | 6.932 | 200.265 | 4892.88 | -496.06 | -504.04 | -186.10 | 40.3476839 | -104.7273296 | 0.00 | |
| 5025.00† | 6.932 | 200.265 | 4992.15 | -507.20 | -515.36 | -190.28 | 40.3476529 | -104.7273449 | 0.00 | |



Planned Wellpath Report

CAPITOL 07N (REV-E.0) PWP

Page 4 of 9



REFERENCE WELLPATH IDENTIFICATION

| | | | |
|----------|---|-----------|-----------------|
| Operator | PDC ENERGY INC | Well | CAPITOL 07N |
| Field | WELD COUNTY (NAD83/GRID) | API/Legal | |
| Facility | SEC.36-T05N-R66W | Wellbore | CAPITOL 07N PWB |
| Slot | SLOT#07 CAPITOL 07N (227'FSL & 2355'FWL,SEC.36) | | |

WELLPATH DATA (188 stations) † = interpolated, ‡ = extrapolated station

| MD [ft] | Inclination [°] | Azimuth [°] | TVD [ft] | Vert Sect [ft] | North [ft] | East [ft] | Latitude | Longitude | DLS [°/100ft] | Comments |
|----------|-----------------|-------------|----------|----------------|------------|-----------|------------|--------------|---------------|----------------|
| 5125.00† | 6.932 | 200.265 | 5091.42 | -518.34 | -526.68 | -194.46 | 40.3476219 | -104.7273603 | 0.00 | |
| 5225.00† | 6.932 | 200.265 | 5190.69 | -529.48 | -538.00 | -198.64 | 40.3475909 | -104.7273756 | 0.00 | |
| 5325.00† | 6.932 | 200.265 | 5289.96 | -540.63 | -549.32 | -202.82 | 40.3475600 | -104.7273910 | 0.00 | |
| 5425.00† | 6.932 | 200.265 | 5389.23 | -551.77 | -560.64 | -207.00 | 40.3475290 | -104.7274063 | 0.00 | |
| 5525.00† | 6.932 | 200.265 | 5488.50 | -562.91 | -571.97 | -211.18 | 40.3474980 | -104.7274217 | 0.00 | |
| 5625.00† | 6.932 | 200.265 | 5587.77 | -574.05 | -583.29 | -215.36 | 40.3474670 | -104.7274370 | 0.00 | |
| 5725.00† | 6.932 | 200.265 | 5687.03 | -585.20 | -594.61 | -219.54 | 40.3474360 | -104.7274524 | 0.00 | |
| 5825.00† | 6.932 | 200.265 | 5786.30 | -596.34 | -605.93 | -223.72 | 40.3474051 | -104.7274677 | 0.00 | |
| 5925.00† | 6.932 | 200.265 | 5885.57 | -607.48 | -617.25 | -227.90 | 40.3473741 | -104.7274831 | 0.00 | |
| 6025.00† | 6.932 | 200.265 | 5984.84 | -618.62 | -628.57 | -232.08 | 40.3473431 | -104.7274984 | 0.00 | |
| 6076.54† | 6.932 | 200.265 | 6036.00 | -624.37 | -634.41 | -234.24 | 40.3473272 | -104.7275064 | 0.00 | TEPEE BUTTES |
| 6125.00† | 6.932 | 200.265 | 6084.11 | -629.77 | -639.90 | -236.26 | 40.3473121 | -104.7275138 | 0.00 | |
| 6225.00† | 6.932 | 200.265 | 6183.38 | -640.91 | -651.22 | -240.44 | 40.3472812 | -104.7275291 | 0.00 | |
| 6319.58 | 6.932 | 200.265 | 6277.27 | -651.45 | -661.93 | -244.40 | 40.3472519 | -104.7275437 | 0.00 | KOP |
| 6325.00† | 6.479 | 201.818 | 6282.65 | -652.03 | -662.52 | -244.62 | 40.3472503 | -104.7275445 | 9.00 | |
| 6425.00† | 3.904 | 319.922 | 6382.42 | -654.49 | -665.15 | -248.92 | 40.3472431 | -104.7275600 | 9.00 | |
| 6525.00† | 12.264 | 347.862 | 6481.37 | -641.30 | -652.14 | -253.36 | 40.3472789 | -104.7275755 | 9.00 | |
| 6625.00† | 21.154 | 352.934 | 6577.05 | -612.80 | -623.79 | -257.82 | 40.3473569 | -104.7275906 | 9.00 | |
| 6725.00† | 30.107 | 355.080 | 6667.12 | -569.67 | -580.81 | -262.20 | 40.3474750 | -104.7276050 | 9.00 | |
| 6825.00† | 39.080 | 356.308 | 6749.36 | -512.99 | -524.25 | -266.39 | 40.3476303 | -104.7276183 | 9.00 | |
| 6894.76† | 45.345 | 356.913 | 6801.00 | -466.15 | -477.48 | -269.14 | 40.3477587 | -104.7276267 | 9.00 | SHARON SPRINGS |
| 6925.00† | 48.062 | 357.136 | 6821.74 | -444.14 | -455.50 | -270.28 | 40.3478191 | -104.7276301 | 9.00 | |
| 6946.76† | 50.017 | 357.285 | 6836.00 | -427.72 | -439.09 | -271.08 | 40.3478641 | -104.7276324 | 9.00 | NIO_A_CHALK |
| 6982.19† | 53.201 | 357.510 | 6858.00 | -399.95 | -411.36 | -272.34 | 40.3479403 | -104.7276361 | 9.00 | NIO_A_MARL |
| 7025.00† | 57.049 | 357.758 | 6882.48 | -364.83 | -376.27 | -273.79 | 40.3480366 | -104.7276402 | 9.00 | |
| 7125.00† | 66.038 | 358.265 | 6930.08 | -277.01 | -288.49 | -276.82 | 40.3482776 | -104.7276483 | 9.00 | |
| 7201.91† | 72.952 | 358.607 | 6957.00 | -205.02 | -216.53 | -278.78 | 40.3484752 | -104.7276531 | 9.00 | NIO_B_CHALK |
| 7225.00† | 75.028 | 358.705 | 6963.37 | -182.83 | -194.34 | -279.30 | 40.3485361 | -104.7276543 | 9.00 | |
| 7304.00† | 82.131 | 359.026 | 6979.00 | -105.46 | -116.97 | -280.83 | 40.3487485 | -104.7276573 | 9.00 | NIO_B_MARL |
| 7325.00† | 84.020 | 359.109 | 6981.53 | -84.62 | -96.13 | -281.17 | 40.3488058 | -104.7276579 | 9.00 | |



Planned Wellpath Report

CAPITOL 07N (REV-E.0) PWP

Page 5 of 9



REFERENCE WELLPATH IDENTIFICATION

| | | | |
|----------|---|-----------|-----------------|
| Operator | PDC ENERGY INC | Well | CAPITOL 07N |
| Field | WELD COUNTY (NAD83/GRID) | API/Legal | |
| Facility | SEC.36-T05N-R66W | Wellbore | CAPITOL 07N PWB |
| Slot | SLOT#07 CAPITOL 07N (227'FSL & 2355'FWL,SEC.36) | | |

WELLPATH DATA (188 stations) † = interpolated, ‡ = extrapolated station

| MD [ft] | Inclination [°] | Azimuth [°] | TVD [ft] | Vert Sect [ft] | North [ft] | East [ft] | Latitude | Longitude | DLS [°/100ft] | Comments |
|-----------------------|-----------------|-------------|----------------------|----------------|------------|-----------|------------|--------------|---------------|----------|
| 7391.51 | 90.000 | 359.369 | 6985.00 [†] | -18.26 | -29.74 | -282.05 | 40.3489880 | -104.7276590 | 9.00 | LP |
| 7425.00 [†] | 90.000 | 359.369 | 6985.00 | 15.22 | 3.75 | -282.42 | 40.3490799 | -104.7276593 | 0.00 | |
| 7525.00 [†] | 90.000 | 359.369 | 6985.00 | 115.18 | 103.74 | -283.52 | 40.3493544 | -104.7276601 | 0.00 | |
| 7625.00 [†] | 90.000 | 359.369 | 6985.00 | 215.13 | 203.73 | -284.62 | 40.3496289 | -104.7276609 | 0.00 | |
| 7725.00 [†] | 90.000 | 359.369 | 6985.00 | 315.09 | 303.73 | -285.73 | 40.3499034 | -104.7276618 | 0.00 | |
| 7825.00 [†] | 90.000 | 359.369 | 6985.00 | 415.04 | 403.72 | -286.83 | 40.3501779 | -104.7276626 | 0.00 | |
| 7925.00 [†] | 90.000 | 359.369 | 6985.00 | 515.00 | 503.72 | -287.93 | 40.3504524 | -104.7276634 | 0.00 | |
| 8025.00 [†] | 90.000 | 359.369 | 6985.00 | 614.96 | 603.71 | -289.03 | 40.3507269 | -104.7276642 | 0.00 | |
| 8125.00 [†] | 90.000 | 359.369 | 6985.00 | 714.91 | 703.70 | -290.13 | 40.3510014 | -104.7276651 | 0.00 | |
| 8225.00 [†] | 90.000 | 359.369 | 6985.00 | 814.87 | 803.70 | -291.23 | 40.3512759 | -104.7276659 | 0.00 | |
| 8325.00 [†] | 90.000 | 359.369 | 6985.00 | 914.82 | 903.69 | -292.33 | 40.3515504 | -104.7276667 | 0.00 | |
| 8425.00 [†] | 90.000 | 359.369 | 6985.00 | 1014.78 | 1003.69 | -293.44 | 40.3518248 | -104.7276675 | 0.00 | |
| 8525.00 [†] | 90.000 | 359.369 | 6985.00 | 1114.74 | 1103.68 | -294.54 | 40.3520993 | -104.7276684 | 0.00 | |
| 8625.00 [†] | 90.000 | 359.369 | 6985.00 | 1214.69 | 1203.67 | -295.64 | 40.3523738 | -104.7276692 | 0.00 | |
| 8725.00 [†] | 90.000 | 359.369 | 6985.00 | 1314.65 | 1303.67 | -296.74 | 40.3526483 | -104.7276700 | 0.00 | |
| 8825.00 [†] | 90.000 | 359.369 | 6985.00 | 1414.60 | 1403.66 | -297.84 | 40.3529228 | -104.7276709 | 0.00 | |
| 8925.00 [†] | 90.000 | 359.369 | 6985.00 | 1514.56 | 1503.65 | -298.94 | 40.3531973 | -104.7276717 | 0.00 | |
| 9025.00 [†] | 90.000 | 359.369 | 6985.00 | 1614.52 | 1603.65 | -300.04 | 40.3534718 | -104.7276725 | 0.00 | |
| 9125.00 [†] | 90.000 | 359.369 | 6985.00 | 1714.47 | 1703.64 | -301.15 | 40.3537463 | -104.7276733 | 0.00 | |
| 9225.00 [†] | 90.000 | 359.369 | 6985.00 | 1814.43 | 1803.64 | -302.25 | 40.3540208 | -104.7276742 | 0.00 | |
| 9325.00 [†] | 90.000 | 359.369 | 6985.00 | 1914.39 | 1903.63 | -303.35 | 40.3542953 | -104.7276750 | 0.00 | |
| 9425.00 [†] | 90.000 | 359.369 | 6985.00 | 2014.34 | 2003.62 | -304.45 | 40.3545698 | -104.7276758 | 0.00 | |
| 9525.00 [†] | 90.000 | 359.369 | 6985.00 | 2114.30 | 2103.62 | -305.55 | 40.3548442 | -104.7276766 | 0.00 | |
| 9625.00 [†] | 90.000 | 359.369 | 6985.00 | 2214.25 | 2203.61 | -306.65 | 40.3551187 | -104.7276775 | 0.00 | |
| 9725.00 [†] | 90.000 | 359.369 | 6985.00 | 2314.21 | 2303.61 | -307.75 | 40.3553932 | -104.7276783 | 0.00 | |
| 9825.00 [†] | 90.000 | 359.369 | 6985.00 | 2414.17 | 2403.60 | -308.85 | 40.3556677 | -104.7276791 | 0.00 | |
| 9925.00 [†] | 90.000 | 359.369 | 6985.00 | 2514.12 | 2503.59 | -309.96 | 40.3559422 | -104.7276799 | 0.00 | |
| 10025.00 [†] | 90.000 | 359.369 | 6985.00 | 2614.08 | 2603.59 | -311.06 | 40.3562167 | -104.7276808 | 0.00 | |
| 10125.00 [†] | 90.000 | 359.369 | 6985.00 | 2714.03 | 2703.58 | -312.16 | 40.3564912 | -104.7276816 | 0.00 | |
| 10225.00 [†] | 90.000 | 359.369 | 6985.00 | 2813.99 | 2803.58 | -313.26 | 40.3567657 | -104.7276824 | 0.00 | |



Planned Wellpath Report

CAPITOL 07N (REV-E.0) PWP

Page 6 of 9



REFERENCE WELLPATH IDENTIFICATION

| | | | |
|----------|---|-----------|-----------------|
| Operator | PDC ENERGY INC | Well | CAPITOL 07N |
| Field | WELD COUNTY (NAD83/GRID) | API/Legal | |
| Facility | SEC.36-T05N-R66W | Wellbore | CAPITOL 07N PWB |
| Slot | SLOT#07 CAPITOL 07N (227'FSL & 2355'FWL,SEC.36) | | |

WELLPATH DATA (188 stations) † = interpolated, ‡ = extrapolated station

| MD [ft] | Inclination [°] | Azimuth [°] | TVD [ft] | Vert Sect [ft] | North [ft] | East [ft] | Latitude | Longitude | DLS [°/100ft] | Comments |
|-----------|-----------------|-------------|----------|----------------|------------|-----------|------------|--------------|---------------|----------|
| 10325.00† | 90.000 | 359.369 | 6985.00 | 2913.95 | 2903.57 | -314.36 | 40.3570402 | -104.7276833 | 0.00 | |
| 10425.00† | 90.000 | 359.369 | 6985.00 | 3013.90 | 3003.56 | -315.46 | 40.3573147 | -104.7276841 | 0.00 | |
| 10525.00† | 90.000 | 359.369 | 6985.00 | 3113.86 | 3103.56 | -316.56 | 40.3575892 | -104.7276849 | 0.00 | |
| 10625.00† | 90.000 | 359.369 | 6985.00 | 3213.81 | 3203.55 | -317.67 | 40.3578637 | -104.7276857 | 0.00 | |
| 10725.00† | 90.000 | 359.369 | 6985.00 | 3313.77 | 3303.55 | -318.77 | 40.3581381 | -104.7276866 | 0.00 | |
| 10825.00† | 90.000 | 359.369 | 6985.00 | 3413.73 | 3403.54 | -319.87 | 40.3584126 | -104.7276874 | 0.00 | |
| 10925.00† | 90.000 | 359.369 | 6985.00 | 3513.68 | 3503.53 | -320.97 | 40.3586871 | -104.7276882 | 0.00 | |
| 11025.00† | 90.000 | 359.369 | 6985.00 | 3613.64 | 3603.53 | -322.07 | 40.3589616 | -104.7276890 | 0.00 | |
| 11125.00† | 90.000 | 359.369 | 6985.00 | 3713.59 | 3703.52 | -323.17 | 40.3592361 | -104.7276899 | 0.00 | |
| 11225.00† | 90.000 | 359.369 | 6985.00 | 3813.55 | 3803.52 | -324.27 | 40.3595106 | -104.7276907 | 0.00 | |
| 11325.00† | 90.000 | 359.369 | 6985.00 | 3913.51 | 3903.51 | -325.38 | 40.3597851 | -104.7276915 | 0.00 | |
| 11425.00† | 90.000 | 359.369 | 6985.00 | 4013.46 | 4003.50 | -326.48 | 40.3600596 | -104.7276924 | 0.00 | |
| 11525.00† | 90.000 | 359.369 | 6985.00 | 4113.42 | 4103.50 | -327.58 | 40.3603341 | -104.7276932 | 0.00 | |
| 11625.00† | 90.000 | 359.369 | 6985.00 | 4213.38 | 4203.49 | -328.68 | 40.3606086 | -104.7276940 | 0.00 | |
| 11725.00† | 90.000 | 359.369 | 6985.00 | 4313.33 | 4303.48 | -329.78 | 40.3608831 | -104.7276948 | 0.00 | |
| 11825.00† | 90.000 | 359.369 | 6985.00 | 4413.29 | 4403.48 | -330.88 | 40.3611575 | -104.7276957 | 0.00 | |
| 11925.00† | 90.000 | 359.369 | 6985.00 | 4513.24 | 4503.47 | -331.98 | 40.3614320 | -104.7276965 | 0.00 | |
| 12025.00† | 90.000 | 359.369 | 6985.00 | 4613.20 | 4603.47 | -333.09 | 40.3617065 | -104.7276973 | 0.00 | |
| 12125.00† | 90.000 | 359.369 | 6985.00 | 4713.16 | 4703.46 | -334.19 | 40.3619810 | -104.7276981 | 0.00 | |
| 12225.00† | 90.000 | 359.369 | 6985.00 | 4813.11 | 4803.45 | -335.29 | 40.3622555 | -104.7276990 | 0.00 | |
| 12325.00† | 90.000 | 359.369 | 6985.00 | 4913.07 | 4903.45 | -336.39 | 40.3625300 | -104.7276998 | 0.00 | |
| 12425.00† | 90.000 | 359.369 | 6985.00 | 5013.02 | 5003.44 | -337.49 | 40.3628045 | -104.7277006 | 0.00 | |
| 12525.00† | 90.000 | 359.369 | 6985.00 | 5112.98 | 5103.44 | -338.59 | 40.3630790 | -104.7277014 | 0.00 | |
| 12625.00† | 90.000 | 359.369 | 6985.00 | 5212.94 | 5203.43 | -339.69 | 40.3633535 | -104.7277023 | 0.00 | |
| 12725.00† | 90.000 | 359.369 | 6985.00 | 5312.89 | 5303.42 | -340.80 | 40.3636280 | -104.7277031 | 0.00 | |
| 12825.00† | 90.000 | 359.369 | 6985.00 | 5412.85 | 5403.42 | -341.90 | 40.3639025 | -104.7277039 | 0.00 | |
| 12925.00† | 90.000 | 359.369 | 6985.00 | 5512.80 | 5503.41 | -343.00 | 40.3641769 | -104.7277048 | 0.00 | |
| 13025.00† | 90.000 | 359.369 | 6985.00 | 5612.76 | 5603.41 | -344.10 | 40.3644514 | -104.7277056 | 0.00 | |
| 13125.00† | 90.000 | 359.369 | 6985.00 | 5712.72 | 5703.40 | -345.20 | 40.3647259 | -104.7277064 | 0.00 | |
| 13225.00† | 90.000 | 359.369 | 6985.00 | 5812.67 | 5803.39 | -346.30 | 40.3650004 | -104.7277072 | 0.00 | |



Planned Wellpath Report

CAPITOL 07N (REV-E.0) PWP

Page 7 of 9



REFERENCE WELLPATH IDENTIFICATION

| | | | |
|----------|---|-----------|-----------------|
| Operator | PDC ENERGY INC | Well | CAPITOL 07N |
| Field | WELD COUNTY (NAD83/GRID) | API/Legal | |
| Facility | SEC.36-T05N-R66W | Wellbore | CAPITOL 07N PWB |
| Slot | SLOT#07 CAPITOL 07N (227'FSL & 2355'FWL,SEC.36) | | |

WELLPATH DATA (188 stations) † = interpolated, ‡ = extrapolated station

| MD [ft] | Inclination [°] | Azimuth [°] | TVD [ft] | Vert Sect [ft] | North [ft] | East [ft] | Latitude | Longitude | DLS [°/100ft] | Comments |
|-----------|-----------------|-------------|----------|----------------|------------|-----------|------------|--------------|---------------|----------|
| 13325.00† | 90.000 | 359.369 | 6985.00 | 5912.63 | 5903.39 | -347.40 | 40.3652749 | -104.7277081 | 0.00 | |
| 13425.00† | 90.000 | 359.369 | 6985.00 | 6012.59 | 6003.38 | -348.51 | 40.3655494 | -104.7277089 | 0.00 | |
| 13525.00† | 90.000 | 359.369 | 6985.00 | 6112.54 | 6103.38 | -349.61 | 40.3658239 | -104.7277097 | 0.00 | |
| 13625.00† | 90.000 | 359.369 | 6985.00 | 6212.50 | 6203.37 | -350.71 | 40.3660984 | -104.7277105 | 0.00 | |
| 13725.00† | 90.000 | 359.369 | 6985.00 | 6312.45 | 6303.36 | -351.81 | 40.3663729 | -104.7277114 | 0.00 | |
| 13825.00† | 90.000 | 359.369 | 6985.00 | 6412.41 | 6403.36 | -352.91 | 40.3666474 | -104.7277122 | 0.00 | |
| 13925.00† | 90.000 | 359.369 | 6985.00 | 6512.37 | 6503.35 | -354.01 | 40.3669218 | -104.7277130 | 0.00 | |
| 14025.00† | 90.000 | 359.369 | 6985.00 | 6612.32 | 6603.35 | -355.11 | 40.3671963 | -104.7277139 | 0.00 | |
| 14125.00† | 90.000 | 359.369 | 6985.00 | 6712.28 | 6703.34 | -356.21 | 40.3674708 | -104.7277147 | 0.00 | |
| 14225.00† | 90.000 | 359.369 | 6985.00 | 6812.23 | 6803.33 | -357.32 | 40.3677453 | -104.7277155 | 0.00 | |
| 14325.00† | 90.000 | 359.369 | 6985.00 | 6912.19 | 6903.33 | -358.42 | 40.3680198 | -104.7277163 | 0.00 | |
| 14425.00† | 90.000 | 359.369 | 6985.00 | 7012.15 | 7003.32 | -359.52 | 40.3682943 | -104.7277172 | 0.00 | |
| 14525.00† | 90.000 | 359.369 | 6985.00 | 7112.10 | 7103.32 | -360.62 | 40.3685688 | -104.7277180 | 0.00 | |
| 14625.00† | 90.000 | 359.369 | 6985.00 | 7212.06 | 7203.31 | -361.72 | 40.3688433 | -104.7277188 | 0.00 | |
| 14725.00† | 90.000 | 359.369 | 6985.00 | 7312.01 | 7303.30 | -362.82 | 40.3691178 | -104.7277196 | 0.00 | |
| 14825.00† | 90.000 | 359.369 | 6985.00 | 7411.97 | 7403.30 | -363.92 | 40.3693923 | -104.7277205 | 0.00 | |
| 14925.00† | 90.000 | 359.369 | 6985.00 | 7511.93 | 7503.29 | -365.03 | 40.3696668 | -104.7277213 | 0.00 | |
| 15025.00† | 90.000 | 359.369 | 6985.00 | 7611.88 | 7603.28 | -366.13 | 40.3699412 | -104.7277221 | 0.00 | |
| 15125.00† | 90.000 | 359.369 | 6985.00 | 7711.84 | 7703.28 | -367.23 | 40.3702157 | -104.7277230 | 0.00 | |
| 15225.00† | 90.000 | 359.369 | 6985.00 | 7811.79 | 7803.27 | -368.33 | 40.3704902 | -104.7277238 | 0.00 | |
| 15325.00† | 90.000 | 359.369 | 6985.00 | 7911.75 | 7903.27 | -369.43 | 40.3707647 | -104.7277246 | 0.00 | |
| 15425.00† | 90.000 | 359.369 | 6985.00 | 8011.71 | 8003.26 | -370.53 | 40.3710392 | -104.7277254 | 0.00 | |
| 15525.00† | 90.000 | 359.369 | 6985.00 | 8111.66 | 8103.25 | -371.63 | 40.3713137 | -104.7277263 | 0.00 | |
| 15625.00† | 90.000 | 359.369 | 6985.00 | 8211.62 | 8203.25 | -372.74 | 40.3715882 | -104.7277271 | 0.00 | |
| 15725.00† | 90.000 | 359.369 | 6985.00 | 8311.58 | 8303.24 | -373.84 | 40.3718627 | -104.7277279 | 0.00 | |
| 15825.00† | 90.000 | 359.369 | 6985.00 | 8411.53 | 8403.24 | -374.94 | 40.3721372 | -104.7277287 | 0.00 | |
| 15925.00† | 90.000 | 359.369 | 6985.00 | 8511.49 | 8503.23 | -376.04 | 40.3724117 | -104.7277296 | 0.00 | |
| 16025.00† | 90.000 | 359.369 | 6985.00 | 8611.44 | 8603.22 | -377.14 | 40.3726861 | -104.7277304 | 0.00 | |
| 16125.00† | 90.000 | 359.369 | 6985.00 | 8711.40 | 8703.22 | -378.24 | 40.3729606 | -104.7277312 | 0.00 | |
| 16225.00† | 90.000 | 359.369 | 6985.00 | 8811.36 | 8803.21 | -379.34 | 40.3732351 | -104.7277321 | 0.00 | |



Planned Wellpath Report

CAPITOL 07N (REV-E.0) PWP

Page 8 of 9



REFERENCE WELLPATH IDENTIFICATION

| | | | |
|----------|---|-----------|-----------------|
| Operator | PDC ENERGY INC | Well | CAPITOL 07N |
| Field | WELD COUNTY (NAD83/GRID) | API/Legal | |
| Facility | SEC.36-T05N-R66W | Wellbore | CAPITOL 07N PWB |
| Slot | SLOT#07 CAPITOL 07N (227'FSL & 2355'FWL,SEC.36) | | |

WELLPATH DATA (188 stations) † = interpolated, ‡ = extrapolated station

| MD [ft] | Inclination [°] | Azimuth [°] | TVD [ft] | Vert Sect [ft] | North [ft] | East [ft] | Latitude | Longitude | DLS [°/100ft] | Comments |
|-----------|-----------------|-------------|----------------------|----------------|------------|-----------|------------|--------------|---------------|----------|
| 16325.00† | 90.000 | 359.369 | 6985.00 | 8911.31 | 8903.21 | -380.45 | 40.3735096 | -104.7277329 | 0.00 | |
| 16425.00† | 90.000 | 359.369 | 6985.00 | 9011.27 | 9003.20 | -381.55 | 40.3737841 | -104.7277337 | 0.00 | |
| 16525.00† | 90.000 | 359.369 | 6985.00 | 9111.22 | 9103.19 | -382.65 | 40.3740586 | -104.7277345 | 0.00 | |
| 16625.00† | 90.000 | 359.369 | 6985.00 | 9211.18 | 9203.19 | -383.75 | 40.3743331 | -104.7277354 | 0.00 | |
| 16725.00† | 90.000 | 359.369 | 6985.00 | 9311.14 | 9303.18 | -384.85 | 40.3746076 | -104.7277362 | 0.00 | |
| 16825.00† | 90.000 | 359.369 | 6985.00 | 9411.09 | 9403.18 | -385.95 | 40.3748821 | -104.7277370 | 0.00 | |
| 16925.00† | 90.000 | 359.369 | 6985.00 | 9511.05 | 9503.17 | -387.05 | 40.3751566 | -104.7277378 | 0.00 | |
| 16943.74 | 90.000 | 359.369 | 6985.00 ² | 9529.78 | 9521.91 | -387.26 | 40.3752080 | -104.7277380 | 0.00 | BHL |

TARGETS

| Name | MD [ft] | TVD [ft] | North [ft] | East [ft] | Grid East [US ft] | Grid North [US ft] | Latitude | Longitude | Shape |
|--|---------------------------------------|----------|------------|-----------|-------------------|--------------------|------------|--------------|---------|
| Sec.01-T04N-R66W | N/A | -38.00 | -3749.90 | 2504.22 | 3218050.25 | 1367194.45 | 40.3387098 | -104.7177809 | polygon |
| | 2D Polygon: dimensions not calculated | | | | | | | | |
| Sec.06-T04N-R65W | N/A | -38.00 | -3749.90 | 2504.22 | 3218050.25 | 1367194.45 | 40.3387098 | -104.7177809 | polygon |
| | 2D Polygon: dimensions not calculated | | | | | | | | |
| Sec.25-T05N-R66W | N/A | -38.00 | -3749.90 | 2504.22 | 3218050.25 | 1367194.45 | 40.3387098 | -104.7177809 | polygon |
| | 2D Polygon: dimensions not calculated | | | | | | | | |
| Sec.30-T05N-R65W | N/A | -38.00 | -3749.90 | 2504.22 | 3218050.25 | 1367194.45 | 40.3387098 | -104.7177809 | polygon |
| | 2D Polygon: dimensions not calculated | | | | | | | | |
| Sec.31-T05N-R65W | N/A | -38.00 | -3749.90 | 2504.22 | 3218050.25 | 1367194.45 | 40.3387098 | -104.7177809 | polygon |
| | 2D Polygon: dimensions not calculated | | | | | | | | |
| Sec.36-T05N-R66W | N/A | -38.00 | -3749.90 | 2504.22 | 3218050.25 | 1367194.45 | 40.3387098 | -104.7177809 | polygon |
| | 2D Polygon: dimensions not calculated | | | | | | | | |
| Sec.24-T05N-R66W | N/A | -6.00 | 82.76 | -35.20 | 3215510.94 | 1371026.94 | 40.3492909 | -104.7267699 | polygon |
| | 2D Polygon: dimensions not calculated | | | | | | | | |
| CAPITOL 07N LP (200'FSL & 2073'FWL,SEC.36) | N/A | 6959.00 | -29.74 | -282.05 | 3215264.10 | 1370914.44 | 40.3489880 | -104.7276590 | point |

| TARGETS | | | | | | | | | |
|---------|---------|----------|------------|-----------|-------------------|--------------------|----------|-----------|-------|
| Name | MD [ft] | TVD [ft] | North [ft] | East [ft] | Grid East [US ft] | Grid North [US ft] | Latitude | Longitude | Shape |
| | | | | | | | | | |

| TARGETS | | | | | | | | | |
|--|----------|----------|------------|-----------|-------------------|--------------------|------------|--------------|--------|
| Name | MD [ft] | TVD [ft] | North [ft] | East [ft] | Grid East [US ft] | Grid North [US ft] | Latitude | Longitude | Shape |
| CAPITOL 07N BHL (150'FNL & 1987'FWL,SEC.24) | N/A | 6980.00 | 15495.54 | -453.21 | 3215092.95 | 1386439.04 | 40.3916060 | -104.7277880 | point |
| CAPITOL 07N BPZ 200'FNL&1987'FWLSEC.24 | N/A | 6980.00 | 15445.56 | -452.58 | 3215093.58 | 1386389.07 | 40.3914688 | -104.7277873 | point |
| CAPITOL 07N Rev-2 BHL (200'FNL & 1987'FWL,SEC.25) | N/A | 6980.00 | 10163.80 | -393.41 | 3215152.75 | 1381107.53 | 40.3769700 | -104.7277400 | point |
| 2) CAPITOL 07N BHL Rev-5 (842'FNL & 1982'FWL Sec.25) | 16943.74 | 6985.00 | 9521.91 | -387.26 | 3215158.90 | 1380465.67 | 40.3752080 | -104.7277380 | point |
| 1) CAPITOL 07N LP Rev-2 (200'FSL&2073'FWL Sec.36) | 7391.51 | 6985.00 | -29.74 | -282.05 | 3215264.10 | 1370914.44 | 40.3489880 | -104.7276590 | point |
| CAPITOL 07N Rev-3 BHL (200'FNL & 1987'FWL,SEC.25) | N/A | 6985.00 | 10163.80 | -393.41 | 3215152.75 | 1381107.53 | 40.3769700 | -104.7277400 | point |
| CAPITOL 07N Rev-4 BHL (837'FNL&1982'FWL Sec.25) | N/A | 6985.00 | 9526.45 | -386.45 | 3215159.71 | 1380470.21 | 40.3752204 | -104.7277350 | point |
| HORII #1 No Go Zone (1500'Radius) | N/A | 7099.00 | 11024.87 | -456.63 | 3215089.53 | 1381968.57 | 40.3793350 | -104.7279400 | circle |
| 2D Circle radius 1500. | | | | | | | | | |

| TARGETS | | | | | | | | | |
|---------------------------------------|---------|----------|------------|-----------|-------------------|--------------------|------------|--------------|---------|
| Name | MD [ft] | TVD [ft] | North [ft] | East [ft] | Grid East [US ft] | Grid North [US ft] | Latitude | Longitude | Shape |
| Capitol Hardline (200'N/S&300'E/W) | N/A | 7199.00 | 69.01 | -29.31 | 3215516.83 | 1371013.18 | 40.3492530 | -104.7267492 | polygon |
| 2D Polygon: dimensions not calculated | | | | | | | | | |

| SURVEY PROGRAM - Ref Wellbore: CAPITOL 07N PWB Ref Wellpath: CAPITOL 07N (REV-E.0) PWP | | | | |
|--|-------------|------------------------------|------------------|-----------------|
| Start MD [ft] | End MD [ft] | Positional Uncertainty Model | Log Name/Comment | Wellbore |
| 25.00 | 1995.00 | OWSG MWD rev2 - Standard | | CAPITOL 07N PWB |
| 1995.00 | 22890.94 | OWSG MWD rev2 (MS+IFR1) | | CAPITOL 07N PWB |



Planned Wellpath Report

CAPITOL 07N (REV-E.0) PWP

Page 9 of 9



REFERENCE WELLPATH IDENTIFICATION

| | | | |
|----------|---|-----------|-----------------|
| Operator | PDC ENERGY INC | Well | CAPITOL 07N |
| Field | WELD COUNTY (NAD83/GRID) | API/Legal | |
| Facility | SEC.36-T05N-R66W | Wellbore | CAPITOL 07N PWB |
| Slot | SLOT#07 CAPITOL 07N (227'FSL & 2355'FWL,SEC.36) | | |

WELLPATH COMMENTS

| MD [ft] | Inclination [°] | Azimuth [°] | TVD [ft] | Comment |
|---------|-----------------|-------------|----------|-----------------------------|
| 1333.87 | 6.932 | 200.265 | 1328.00 | PIERRE_(UPPER)_AQUIFER_BASE |
| 2301.94 | 6.932 | 200.265 | 2289.00 | PIERRE_MBR_A_SD_TOP |
| 2834.84 | 6.932 | 200.265 | 2818.00 | PIERRE_MBR_A_SD_BASE |
| 3650.80 | 6.932 | 200.265 | 3628.00 | PARKMAN |
| 4117.21 | 6.932 | 200.265 | 4091.00 | SUSSEX |
| 4814.31 | 6.932 | 200.265 | 4783.00 | SHANNON |
| 6076.54 | 6.932 | 200.265 | 6036.00 | TEPEE_BUTTES |
| 6894.76 | 45.345 | 356.913 | 6801.00 | SHARON SPRINGS |
| 6946.76 | 50.017 | 357.285 | 6836.00 | NIO_A_CHALK |
| 6982.19 | 53.201 | 357.510 | 6858.00 | NIO_A_MARL |
| 7201.91 | 72.952 | 358.607 | 6957.00 | NIO_B_CHALK |
| 7304.00 | 82.131 | 359.026 | 6979.00 | NIO_B_MARL |

DESIGN COMMENTS

| MD [ft] | Inclination [°] | Azimuth [°] | TVD [ft] | Comment |
|----------|-----------------|-------------|----------|----------------|
| 25.00 | 0.000 | 200.265 | 25.00 | SHL |
| 300.00 | 0.000 | 200.265 | 300.00 | End of Tangent |
| 646.59 | 6.932 | 200.265 | 645.75 | Build (XS) |
| 6319.58 | 6.932 | 200.265 | 6277.27 | KOP |
| 7391.51 | 90.000 | 359.369 | 6985.00 | LP |
| 16943.74 | 90.000 | 359.369 | 6985.00 | BHL |



Closest Approach Clearance Summary Report

CAPITOL 07N (REV-E.0) PWP - SPE WPTS Stop Drilling HSE Risk (2017)
Page 1 of 9



REFERENCE WELLPATH IDENTIFICATION

| | | | |
|----------|---|-----------|-----------------|
| Operator | PDC ENERGY INC | Well | CAPITOL 07N |
| Field | WELD COUNTY (NAD83/GRID) | API/Legal | |
| Facility | SEC.36-T05N-R66W | Wellbore | CAPITOL 07N PWB |
| Slot | SLOT#07 CAPITOL 07N (227'FSL & 2355'FWL,SEC.36) | | |

REPORT SETUP INFORMATION

| | | | |
|---------------------|---|------------------|-------------------------|
| Projection System | NAD83 / Lambert Colorado SP, Northern Zone (501), US feet | Software System | WellArchitect® 6.0 |
| North Reference | Grid | User | Guenaler |
| Scale | 0.999958 | Report Generated | 6/20/2025 at 3:05:29 PM |
| Convergence at slot | 0.50° East | Database | WA_Denver |

WELLPATH LOCATION

| | Local coordinates | | Grid coordinates | | Geographic coordinates | |
|-----------------------|-------------------|----------|------------------|-----------------|------------------------|---------------|
| | North[ft] | East[ft] | Easting[US ft] | Northing[US ft] | Latitude | Longitude |
| Slot Location | -82.76 | 35.20 | 3215546.14 | 1370944.18 | 40.3490629° | -104.7266462° |
| Facility Reference Pt | | | 3215510.94 | 1371026.94 | 40.3492909° | -104.7267699° |
| Field Reference Pt | | | 3296400.32 | 1413291.61 | 40.4630000° | -104.4347500° |

WELLPATH DATUM

| | | | |
|--------------------------|--------------------------------------|--|-----------|
| Calculation method | Minimum Curvature | Rig (4664'GL+25'KB = 4689'RKB) (RKB) to Facility Vertical Datum | 4689.00ft |
| Horizontal Reference Pt | Slot | Rig (4664'GL+25'KB = 4689'RKB) (RKB) to Mean Sea Level | 4689.00ft |
| Vertical Reference Pt | Rig (4664'GL+25'KB = 4689'RKB) (RKB) | Rig (4664'GL+25'KB = 4689'RKB) (RKB) to Ground Level at Slot (SLOT#07 CAPITOL 07N (227'FSL & 2355'FWL,SEC.36)) | 4689.00ft |
| MD Reference Pt | Rig (4664'GL+25'KB = 4689'RKB) (RKB) | | |
| Field Vertical Reference | Mean Sea Level | | |

POSITIONAL UNCERTAINTY CALCULATION SETTINGS

| | | | | | |
|--------------------------|------------------|------------------|---------|------------------------------|----------|
| Ellipse Confidence Limit | 3.50 Std Dev | Ellipse Start MD | 25.00ft | Surface Position Uncertainty | included |
| Declination | 7.67° East of TN | Dip Angle | 66.52° | Mag Field Strength | 51611 nT |

POSITIONAL UNCERTAINTY CALCULATION SETTINGS

| | | | | |
|-----------------------------------|------------|----------------|----------|----------------|
| Slot Surface Uncertainty @1SD | Horizontal | 0.100ft | Vertical | 1.000ft |
| Facility Surface Uncertainty @1SD | Horizontal | 8.200ft | Vertical | 3.000ft |

Positional Uncertainty values in the WELLPATH DATA table are the projection of the ellipsoid of uncertainty onto the vertical and horizontal planes



Closest Approach Clearance Summary Report

CAPITOL 07N (REV-E.0) PWP - SPE WPTS Stop Drilling HSE Risk (2017)
Page 2 of 9



| REFERENCE WELLPATH IDENTIFICATION | | | |
|-----------------------------------|---|-----------|-----------------|
| Operator | PDC ENERGY INC | Well | CAPITOL 07N |
| Field | WELD COUNTY (NAD83/GRID) | API/Legal | |
| Facility | SEC.36-T05N-R66W | Wellbore | CAPITOL 07N PWB |
| Slot | SLOT#07 CAPITOL 07N (227'FSL & 2355'FWL,SEC.36) | | |

| PROXIMITY-SCAN RULE | | | |
|----------------------------|--|----------------------|-------|
| Rule Name | SPE WPTS Stop Drilling HSE Risk (2017) | Rule Based On | Ratio |
| Plane of Rule | Closest Approach | Threshold Value | 1.00 |
| Include Casing & Hole Size | yes | Apply Cone of Safety | no |

| SURVEY PROGRAM - Ref Wellbore: CAPITOL 07N PWB Ref Wellpath: CAPITOL 07N (REV-E.0) PWP | | | | |
|---|-------------|------------------------------|------------------|-----------------|
| Start MD [ft] | End MD [ft] | Positional Uncertainty Model | Log Name/Comment | Wellbore |
| 25.00 | 1995.00 | OWSG MWD rev2 - Standard | | CAPITOL 07N PWB |
| 1995.00 | 22890.94 | OWSG MWD rev2 (MS+IFR1) | | CAPITOL 07N PWB |



Closest Approach Clearance Summary Report

CAPITOL 07N (REV-E.0) PWP - SPE WPTS Stop Drilling HSE Risk (2017)

Page 3 of 9



| REFERENCE WELLPATH IDENTIFICATION | | | |
|-----------------------------------|---|-----------|-----------------|
| Operator | PDC ENERGY INC | Well | CAPITOL 07N |
| Field | WELD COUNTY (NAD83/GRID) | API/Legal | |
| Facility | SEC.36-T05N-R66W | Wellbore | CAPITOL 07N PWB |
| Slot | SLOT#07 CAPITOL 07N (227'FSL & 2355'FWL,SEC.36) | | |

| CALCULATION RANGE & CUTOFF | | |
|----------------------------|-------------------|--------------------|
| From: 25.00ft MD | To: 16943.74ft MD | C-C Cutoff: (none) |

| OFFSET WELL CLEARANCE SUMMARY (171 Offset Wellpaths selected) Ratios are calculated in Closest Approach plane | | | | | | | | | | | | |
|---|--|-----------------------|-----------------------|-----------------|-----------------|------------------------|-------------------------|------------------------|--------------------------|-----------|--------------------------|-------------|
| Offset Facility | Offset Slot | Offset Well | Offset Wellbore | Offset Wellpath | Wellbore Status | C-C Clearance Distance | | | Rule Separation Ratio | | | |
| | | | | | | Ref MD [ft] | Min C-C Clear Dist [ft] | Diverging from MD [ft] | Ref MD of Min Ratio [ft] | Min Ratio | Min Ratio Dvrg from [ft] | Rule Status |
| Blackburn Offsets | (ANDERSON-COOMBS 1) (05-123-11649) | ANDERSON-COOMBS 1 | ANDERSON-COOMBS 1 | OWB\OWB | Abandoned | 14551.02 | 36.72 | 14551.02 | 14551.02 | 0.00 | 14551.02 | FAIL |
| Blackburn Offsets | (STATE-ELK 1) (05-123-12916) | STATE-ELK 1 | STATE-ELK 1 | OWB\OWB | Abandoned | 10678.69 | 165.50 | 10678.69 | 10678.69 | 0.02 | 10678.69 | FAIL |
| Blackburn Offsets | (HILL STATE 18-36) (05-123-22263) | HILL STATE 18-36 | HILL STATE 18-36 | OWB\OWB | Abandoned | 11153.18 | 546.20 | 11153.18 | 11153.18 | 0.06 | 11153.18 | FAIL |
| Blackburn Offsets | (CURTIS UNIT 1) (05-123-11914) | CURTIS UNIT 1 | CURTIS UNIT 1 | OWB\OWB | Abandoned | 13103.48 | 1300.33 | 13103.48 | 13103.51 | 0.15 | 13103.51 | FAIL |
| Blackburn Offsets | (ANDERSON COOMBS 6) (05-123-12852) | ANDERSON COOMBS 6 | ANDERSON COOMBS 6 | OWB\OWB | Abandoned | 16943.74 | 1367.36 | 16943.74 | 16943.74 | 0.16 | 16943.74 | FAIL |
| Blackburn Offsets | (ISHIGURO 5) (05-123-12892) | ISHIGURO 5 | ISHIGURO 5 | OWB\OWB | Abandoned | 10693.17 | 1473.27 | 10693.17 | 10693.19 | 0.17 | 10693.19 | FAIL |
| Blackburn Offsets | (PEPLER 3-36) (05-123-13289) | PEPLER 3-36 | PEPLER 3-36 | OWB\OWB | Suspended | 10171.82 | 1518.37 | 10171.82 | 10171.84 | 0.18 | 10171.84 | FAIL |
| Blackburn Offsets | (REEVE, FREEDA 2-1) (05-123-14918) | REEVE, FREEDA 2-1 | REEVE, FREEDA 2-1 | OWB\OWB | Abandoned | 3359.31 | 1473.31 | 3359.31 | 6844.72 | 0.19 | 6844.72 | FAIL |
| Blackburn Offsets | (ISHIGURO 2) (05-123-12900) | ISHIGURO 2 | ISHIGURO 2 | OWB\OWB | Abandoned | 12098.50 | 39.07 | 12098.50 | 12098.31 | 0.40 | 12098.31 | FAIL |
| Blackburn Offsets | (CUNNINGHAM UNIT 1) (05-123-11835) | CUNNINGHAM UNIT 1 | CUNNINGHAM UNIT 1 | OWB\OWB | Abandoned | 14398.28 | 3930.95 | 14398.28 | 14398.59 | 0.46 | 14398.59 | FAIL |
| Blackburn Offsets | (ANDERSON-COOMBS 2) (05-123-12848) | ANDERSON-COOMBS 2 | ANDERSON-COOMBS 2 | OWB\OWB | Abandoned | 15839.66 | 65.15 | 15839.66 | 15840.28 | 0.46 | 15840.28 | FAIL |
| Blackburn Offsets | (VAUGHAN 12-30) (05-123-12596) | VAUGHAN 12-30 | VAUGHAN 12-30 | OWB\OWB | Abandoned | 15591.32 | 4175.48 | 15591.32 | 15591.73 | 0.49 | 15591.73 | FAIL |
| Blackburn Offsets | (NOE 1-30) (05-123-13288) | NOE 1-30 | NOE 1-30 | OWB\OWB | Abandoned | 12978.65 | 4228.59 | 12978.65 | 12978.94 | 0.50 | 12978.94 | FAIL |
| Blackburn Offsets | (BROWN 1) (05-123-12689) | BROWN 1 | BROWN 1 | OWB\OWB | Abandoned | 9121.77 | 34.12 | 9121.77 | 9122.56 | 0.50 | 9122.56 | FAIL |
| Blackburn Offsets | (GREEN 1) (05-123-11874) | GREEN 1 | GREEN 1 | OWB\OWB | Abandoned | 13238.71 | 55.54 | 13238.71 | 13239.59 | 0.51 | 13239.59 | FAIL |
| Blackburn Offsets | (GEMINI K 1-14) (05-123-13870) | GEMINI K 1-14 | GEMINI K 1-14 | OWB\OWB | Abandoned | 6425.00 | 4238.18 | 6425.00 | 6756.49 | 0.53 | 6756.49 | FAIL |
| Blackburn Offsets | (GEMINI G FEDERAL 6-33) (05-123-30688) | GEMINI G FEDERAL 6-33 | GEMINI G FEDERAL 6-33 | OWB\OWB | Suspended | 6367.55 | 4769.16 | 6367.55 | 6859.49 | 0.59 | 6859.49 | FAIL |
| Blackburn Offsets | (GEMINI K FEDERAL 1-16) (05-123-13872) | GEMINI K FEDERAL 1-16 | GEMINI K FEDERAL 1-16 | OWB\OWB | Abandoned | 6374.71 | 4772.54 | 6374.71 | 6827.00 | 0.59 | 6827.00 | FAIL |
| Blackburn Offsets | (STENZEL 1 - 31) (05-123-13295) | STENZEL 1 - 31 | STENZEL 1 - 31 | OWB\OWB | Abandoned | 12031.84 | 5072.92 | 12031.84 | 12032.20 | 0.60 | 12032.20 | FAIL |

OFFSET WELL CLEARANCE SUMMARY (171 Offset Wellpaths selected) Ratios are calculated in Closest Approach plane

| Offset Facility | Offset Slot | Offset Well | Offset Wellbore | Offset Wellpath | Wellbore Status | C-C Clearance Distance | | | Rule Separation Ratio | | | |
|-------------------|------------------------------------|-------------------|-------------------|-----------------------|-----------------------|------------------------|-------------------------|------------------------|--------------------------|-----------|--------------------------|-------------|
| | | | | | | Ref MD [ft] | Min C-C Clear Dist [ft] | Diverging from MD [ft] | Ref MD of Min Ratio [ft] | Min Ratio | Min Ratio Dvrg from [ft] | Rule Status |
| Blackburn Offsets | (SYLVESTER 31-6H5) (05-123-18190) | SYLVESTER 31-6H5 | SYLVESTER 31-6H5 | OWB\OWB | Abandoned | 10591.55 | 5329.64 | 10591.55 | 10591.83 | 0.62 | 10591.83 | FAIL |
| SEC.24-T5N-R66W | SLOT#12 HORII #1 (05-123-11135) PA | HORII #1 | HORII #1 AWB | HORII #1 AWP | Abandoned | 16943.74 | 1504.56 | 16943.74 | 16943.74 | 0.70 | 16943.74 | FAIL |
| SEC.24-T5N-R66W | SLOT#10 DUELL #1 (05-123-11750) PA | DUELL #1 | DUELL #1 AWB | DUELL #1 AWP | Abandoned | 16943.74 | 2003.59 | 16943.74 | 16943.74 | 0.93 | 16943.74 | FAIL |
| Blackburn Offsets | (GOODNER 6-1) (05-123-13912) | GOODNER 6-1 | GOODNER 6-1 | OWB\OWB | Abandoned | 3899.32 | 8414.02 | 3899.32 | 7200.69 | 1.01 | 7200.69 | WARN |
| Blackburn Offsets | (SYLVESTER 36-16H6) (05-123-18113) | SYLVESTER 36-16H6 | SYLVESTER 36-16H6 | SYLVESTER 36-16H6 AWP | Producing / injecting | 25.00 | 2347.42 | 7955.40 | 7955.40 | 1.21 | 7955.40 | PASS |
| Blackburn Offsets | (SYLVESTER 36-9H6) (05-123-12507) | SYLVESTER 36-9H6 | SYLVESTER 36-9H6 | SYLVESTER 36-9H6 AWP | Producing / injecting | 8967.54 | 2573.11 | 8967.54 | 8968.09 | 1.21 | 8968.09 | PASS |



Closest Approach Clearance Summary Report

CAPITOL 07N (REV-E.0) PWP - SPE WPTS Stop Drilling HSE Risk (2017)

Page 4 of 9



| REFERENCE WELLPATH IDENTIFICATION | | | |
|-----------------------------------|---|-----------|-----------------|
| Operator | PDC ENERGY INC | Well | CAPITOL 07N |
| Field | WELD COUNTY (NAD83/GRID) | API/Legal | |
| Facility | SEC.36-T05N-R66W | Wellbore | CAPITOL 07N PWB |
| Slot | SLOT#07 CAPITOL 07N (227'FSL & 2355'FWL,SEC.36) | | |

| CALCULATION RANGE & CUTOFF | | |
|----------------------------|-------------------|--------------------|
| From: 25.00ft MD | To: 16943.74ft MD | C-C Cutoff: (none) |

| OFFSET WELL CLEARANCE SUMMARY (171 Offset Wellpaths selected) Ratios are calculated in Closest Approach plane | | | | | | | | | | | | |
|---|---|--------------------------|--------------------------|---------------------------|-----------------------|------------------------|-------------------------|------------------------|--------------------------|-----------|--------------------------|-------------|
| Offset Facility | Offset Slot | Offset Well | Offset Wellbore | Offset Wellpath | Wellbore Status | C-C Clearance Distance | | | Rule Separation Ratio | | | |
| | | | | | | Ref MD [ft] | Min C-C Clear Dist [ft] | Diverging from MD [ft] | Ref MD of Min Ratio [ft] | Min Ratio | Min Ratio Dvrg from [ft] | Rule Status |
| SEC.24-T5N-R66W | SLOT#13 HORII #2 (05-123-11748) PA | HORII #2 | HORII #2 AWB | HORII #2 AWP | Abandoned | 16943.74 | 2826.47 | 16943.74 | 16943.74 | 1.31 | 16943.74 | PASS |
| SEC.36-T05N-R66W | SLOT#08 CAPITOL 08N (213'FSL & 2361'FWL,SEC.36) | CAPITOL 08N | CAPITOL 08N PWB | CAPITOL 08N (REV-E.0) PWP | Planned | 25.00 | 15.01 | 16943.74 | 16943.74 | 1.52 | 16943.74 | PASS |
| SEC.36-T05N-R66W | SLOT#06 CAPITOL 06N (241'FSL & 2348'FWL,SEC.36) | CAPITOL 06N | CAPITOL 06N PWB | CAPITOL 06N (REV-E.0) PWP | Planned | 25.00 | 15.01 | 16943.74 | 16943.74 | 1.54 | 16943.74 | PASS |
| Blackburn Offsets | (ISHIGURO 17-36) (05-123-25592) | ISHIGURO 17-36 | ISHIGURO 17-36 | ISHIGURO 17-36 AWP | Producing / injecting | 11409.94 | 1887.33 | 11409.94 | 11412.55 | 1.77 | 11412.55 | PASS |
| Blackburn Offsets | (SYLVESTER 31-12H5) (05-123-18191) | SYLVESTER 31-12H5 | SYLVESTER 31-12H5 | SYLVESTER 31-12H5 AWP | Producing / injecting | 9314.15 | 4012.02 | 9314.15 | 9315.73 | 1.88 | 9315.73 | PASS |
| SEC.24-T5N-R66W | SLOT#15 RKW #1 (05-123-10763) PA | RKW #1 | RKW #1 AWB | RKW #1 AWP | Abandoned | 16943.74 | 4319.51 | 16943.74 | 16943.74 | 2.00 | 16943.74 | PASS |
| SEC.24-T5N-R66W | SLOT#14 MEYER #1 (05-123-12474) PA | MEYER #1 | MEYER #1 AWB | MEYER #1 AWP | Abandoned | 16943.74 | 4593.19 | 16943.74 | 16943.74 | 2.12 | 16943.74 | PASS |
| Blackburn Offsets | (LOEFFLER K 01-69-1HN) (05-123-37735) | LOEFFLER K 01-69-1HN | LOEFFLER K 01-69-1HN | OWB\OWB | Producing / injecting | 6987.90 | 236.92 | 6987.90 | 7068.71 | 2.65 | 7068.71 | PASS |
| Blackburn Offsets | (MCCARTHY FEDERAL 6-33) (05-123-19040) | MCCARTHY FEDERAL 6-33 | MCCARTHY FEDERAL 6-33 | MCCARTHY FEDERAL 6-33 AWP | Producing / injecting | 6364.28 | 5683.52 | 6364.28 | 6931.15 | 2.80 | 6931.15 | PASS |
| Blackburn Offsets | (MCCARTHY FEDERAL 6-35) (05-123-25323) | MCCARTHY FEDERAL 6-35 | MCCARTHY FEDERAL 6-35 | MCCARTHY FEDERAL 6-35 AWP | Producing / injecting | 6366.84 | 5944.60 | 6366.84 | 6977.69 | 2.91 | 6977.69 | PASS |
| Blackburn Offsets | (ANDERSON COOMBS 3) (05-123-12849) | ANDERSON COOMBS 3 | ANDERSON COOMBS 3 | OWB\OWB | Abandoned | 16943.74 | 186.78 | 16943.74 | 16943.74 | 2.94 | 16943.74 | PASS |
| SEC.36-T05N-R66W | SLOT#05 CAPITOL 05N (254'FSL & 2342'FWL,SEC.36) | CAPITOL 05N | CAPITOL 05N PWB | CAPITOL 05N (REV-E.0) PWP | Planned | 303.60 | 29.96 | 16943.74 | 16943.74 | 3.01 | 16943.74 | PASS |
| Blackburn Offsets | (AD FED LIBRARY 20W-25-17) (05-123-45033) | AD FED LIBRARY 20W-25-17 | AD FED LIBRARY 20W-25-17 | OWB\OWB | Suspended | 16943.74 | 1668.35 | 16943.74 | 16943.74 | 3.82 | 16943.74 | PASS |
| | | | | OWB\OWB | | 16943.74 | 1483.52 | 16943.74 | 16682.91 | 3.87 | 16682.91 | PASS |

| OFFSET WELL CLEARANCE SUMMARY (171 Offset Wellpaths selected) Ratios are calculated in Closest Approach plane | | | | | | | | | | | | | |
|---|---|--------------------------|----------------------------|---------------------------|-----------------------|------------------------|-------------------------|------------------------|--------------------------|-----------|--------------------------|-------------|--|
| Offset Facility | Offset Slot | Offset Well | Offset Wellbore | Offset Wellpath | Wellbore Status | C-C Clearance Distance | | | Rule Separation Ratio | | | | |
| | | | | | | Ref MD [ft] | Min C-C Clear Dist [ft] | Diverging from MD [ft] | Ref MD of Min Ratio [ft] | Min Ratio | Min Ratio Dvrg from [ft] | Rule Status | |
| Blackburn Offsets | (AD FED LIBRARY 20W-25-18) (05-123-45037) | AD FED LIBRARY 20W-25-18 | AD FED LIBRARY 20W-25-18 | | Producing / injecting | | | | | | | | |
| Blackburn Offsets | (AD FED DAIRY 20W-25-16) (05-123-45937) | AD FED DAIRY 20W-25-16 | AD FED DAIRY 20W-25-16 | OWB\OWB | Producing / injecting | 16943.74 | 1853.55 | 16943.74 | 16943.74 | 3.98 | 16943.74 | PASS | |
| Blackburn Offsets | (AD FED DAIRY 20W-25-15) (05-123-41140) | AD FED DAIRY 20W-25-15 | AD FED DAIRY 20W-25-15 | OWB\OWB | Producing / injecting | 16943.74 | 1952.45 | 16943.74 | 16943.74 | 4.05 | 16943.74 | PASS | |
| Blackburn Offsets | (AD FED DAIRY 20W-25-14) (05-123-41138) | AD FED DAIRY 20W-25-14 | AD FED DAIRY 20W-25-14 | OWB\OWB | Producing / injecting | 16943.74 | 2172.67 | 16943.74 | 16943.74 | 4.18 | 16943.74 | PASS | |
| Blackburn Offsets | (REHMER 36-14H6) (05-123-18686) | REHMER 36-14H6 | REHMER 36-14H6 | OWB\OWB | Abandoned | 7971.35 | 260.43 | 7971.35 | 7974.62 | 4.25 | 7974.62 | PASS | |
| Blackburn Offsets | (AD FED DAIRY 20W-25-13) (05-123-45034) | AD FED DAIRY 20W-25-13 | AD FED DAIRY 20W-25-13 | OWB\OWB | Producing / injecting | 16943.74 | 2354.50 | 16943.74 | 16943.74 | 4.37 | 16943.74 | PASS | |
| Blackburn Offsets | (FREEDA REEVE 4-1) (05-123-15319) | FREEDA REEVE 4-1 | FREEDA REEVE 4-1 | OWB\OWB | Abandoned | 6375.51 | 247.00 | 6375.51 | 6389.02 | 4.44 | 6389.02 | PASS | |
| SEC.36-T05N-R66W | SLOT#04 CAPITOL 04N (268'FSL & 2336'FWL,SEC.36) | CAPITOL 04N | CAPITOL 04N PWB | CAPITOL 04N (REV-E.0) PWP | Planned | 25.00 | 44.96 | 16943.74 | 16943.74 | 4.56 | 16943.74 | PASS | |
| Blackburn Offsets | (AD FED DAIRY 20W-25-12) (05-123-40314) | AD FED DAIRY 20W-25-12 | AD FED DAIRY 20W-25-12 | OWB\OWB | Producing / injecting | 16943.74 | 2522.76 | 16943.74 | 16943.74 | 4.57 | 16943.74 | PASS | |
| Blackburn Offsets | (CURTIS 23-25) (05-123-31134) | CURTIS 23-25 | CURTIS 23-25 | OWB\OWB | Producing / injecting | 13906.39 | 601.34 | 13906.39 | 13915.58 | 4.94 | 13915.58 | PASS | |
| Blackburn Offsets | (AD FED DAIRY 20W-25-11) (05-123-41146) | AD FED DAIRY 20W-25-11 | AD FED DAIRY 20W-25-11 | OWB\OWB | Producing / injecting | 16943.74 | 2809.24 | 16943.74 | 16943.74 | 4.94 | 16943.74 | PASS | |
| Blackburn Offsets | (AD FED DAIRY 20W-25-10) (05-123-45032) | AD FED DAIRY 20W-25-10 | AD FED DAIRY 20W-25-10 AWB | OWB\OWB | Producing / injecting | 16943.74 | 2941.83 | 16943.74 | 16943.74 | 5.14 | 16943.74 | PASS | |



Closest Approach Clearance Summary Report

CAPITOL 07N (REV-E.0) PWP - SPE WPTS Stop Drilling HSE Risk (2017)

Page 5 of 9



| REFERENCE WELLPATH IDENTIFICATION | | | |
|-----------------------------------|---|-----------|-----------------|
| Operator | PDC ENERGY INC | Well | CAPITOL 07N |
| Field | WELD COUNTY (NAD83/GRID) | API/Legal | |
| Facility | SEC.36-T05N-R66W | Wellbore | CAPITOL 07N PWB |
| Slot | SLOT#07 CAPITOL 07N (227'FSL & 2355'FWL,SEC.36) | | |

| CALCULATION RANGE & CUTOFF | | |
|----------------------------|-------------------|--------------------|
| From: 25.00ft MD | To: 16943.74ft MD | C-C Cutoff: (none) |

| OFFSET WELL CLEARANCE SUMMARY (171 Offset Wellpaths selected) Ratios are calculated in Closest Approach plane | | | | | | | | | | | | |
|---|---|-------------------------------|------------------------------|---------------------------|-----------------------|------------------------|-------------------------|------------------------|--------------------------|-----------|--------------------------|-------------|
| Offset Facility | Offset Slot | Offset Well | Offset Wellbore | Offset Wellpath | Wellbore Status | C-C Clearance Distance | | | Rule Separation Ratio | | | |
| | | | | | | Ref MD [ft] | Min C-C Clear Dist [ft] | Diverging from MD [ft] | Ref MD of Min Ratio [ft] | Min Ratio | Min Ratio Dvrg from [ft] | Rule Status |
| Blackburn Offsets | (AD FED DOUBLE CLUTCH 20W-25-9) (05-123-45039) | AD FED DOUBLE CLUTCH 20W-25-9 | AD FED DOUBLE CLUTC 20W-25-9 | OWB\OWB | Producing / injecting | 16943.74 | 3344.09 | 16943.74 | 16943.74 | 5.71 | 16943.74 | PASS |
| Blackburn Offsets | (AD FED DOUBLE CLUTCH 20W-25-8) (05-123-45035) | AD FED DOUBLE CLUTCH 20W-25-8 | AD FED DOUBLE CLUTC 20W-25-8 | OWB\OWB | Producing / injecting | 16943.74 | 3566.24 | 16943.74 | 16943.74 | 6.01 | 16943.74 | PASS |
| SEC.36-T05N-R66W | SLOT#03 CAPITOL 03N (282'FSL & 2329'FWL,SEC.36) | CAPITOL 03N | CAPITOL 03N PWB | CAPITOL 03N (REV-E.0) PWP | Planned | 300.14 | 60.00 | 16943.74 | 16943.74 | 6.05 | 16943.74 | PASS |
| Blackburn Offsets | (CURTIS 36-25) (05-123-31207) | CURTIS 36-25 | CURTIS 36-25 | OWB\OWB | Producing / injecting | 12614.02 | 697.47 | 12614.02 | 12650.52 | 6.48 | 12650.52 | PASS |
| SEC.36-T05N-R66W | SLOT#02 CAPITOL 02N (296'FSL & 2323'FWL,SEC.36) | CAPITOL 02N | CAPITOL 02N PWB | CAPITOL 02N (REV-E.0) PWP | Planned | 300.04 | 74.97 | 16943.74 | 16943.74 | 7.61 | 16943.74 | PASS |
| Blackburn Offsets | (ISHIGURO 21-36) (05-123-28121) | ISHIGURO 21-36 | ISHIGURO 21-36 | OWB\OWB | Abandoned | 11273.26 | 716.16 | 11273.26 | 11313.84 | 7.70 | 11313.84 | PASS |
| Blackburn Offsets | (ISHIGURO 25-36) (05-123-28120) | ISHIGURO 25-36 | ISHIGURO 25-36 | OWb\OWb | Producing / injecting | 9982.18 | 783.35 | 9982.18 | 10092.74 | 8.34 | 10092.74 | PASS |
| Blackburn Offsets | (WASS 4) (05-123-11757) | WASS 4 | WASS 4 | OWB\OWB | Abandoned | 16943.74 | 1345.61 | 16943.74 | 16943.74 | 8.80 | 16943.74 | PASS |
| SEC.36-T05N-R66W | SLOT#01 CAPITOL 01N (310'FSL & 2317'FWL,SEC.36) | CAPITOL 01N | CAPITOL 01N PWB | CAPITOL 01N (REV-D.0) PWP | Planned | 25.00 | 89.93 | 16943.74 | 16943.74 | 9.07 | 16943.74 | PASS |
| Blackburn Offsets | (WASS 2) (05-123-11668) | WASS 2 | WASS 2 | OWB\OWB | Abandoned | 15801.79 | 1334.53 | 15801.79 | 15886.48 | 9.63 | 15886.48 | PASS |
| Blackburn Offsets | (ANDERSON COOMBS 5) (05-123-12851) | ANDERSON COOMBS 5 | ANDERSON COOMBS 5 | OWB\OWB | Abandoned | 15892.78 | 1415.89 | 15892.78 | 16002.14 | 10.09 | 16002.14 | PASS |
| Blackburn Offsets | (LOEFFLER K 01-68-1HN) (05-123-35836) | LOEFFLER K 01-68-1HN | LOEFFLER K 01-68-1HN | OWB\OWB | Producing / injecting | 6725.00 | 745.38 | 6725.00 | 6814.13 | 10.45 | 6814.13 | PASS |
| Blackburn Offsets | (ANDERSON COOMBS 4) (05-123-12850) | ANDERSON COOMBS 4 | ANDERSON COOMBS 4 | OWB\OWB | Abandoned | 14484.51 | 1387.32 | 14484.51 | 14619.19 | 11.25 | 14619.19 | PASS |
| | (CURTIS 15-25) (05-123-31132) | CURTIS 15-25 | CURTIS 15-25 | OWB\OWB | Abandoned | 13336.97 | 1217.34 | 13336.97 | 13426.26 | 11.32 | 13426.26 | PASS |

| OFFSET WELL CLEARANCE SUMMARY (171 Offset Wellpaths selected) Ratios are calculated in Closest Approach plane | | | | | | | | | | | | |
|---|---|--------------------------------|------------------------------------|------------------------------------|-----------------------|------------------------|-------------------------|------------------------|--------------------------|-----------|--------------------------|-------------|
| Offset Facility | Offset Slot | Offset Well | Offset Wellbore | Offset Wellpath | Wellbore Status | C-C Clearance Distance | | | Rule Separation Ratio | | | |
| | | | | | | Ref MD [ft] | Min C-C Clear Dist [ft] | Diverging from MD [ft] | Ref MD of Min Ratio [ft] | Min Ratio | Min Ratio Dvrg from [ft] | Rule Status |
| Blackburn Offsets | | | | | | | | | | | | |
| Blackburn Offsets | (WASS 3X) (05-123-13279) | WASS 3X | WASS 3X | OWB\OWB | Abandoned | 14500.22 | 1458.76 | 14500.22 | 14614.99 | 11.95 | 14614.99 | PASS |
| Blackburn Offsets | (AD FED DOUBLE CLUTCH #20W-25-7) (05-123-45036) | AD FED DOUBLE CLUTCH #20W-25-7 | AD FED DOUBLE CLUTCH #20W-25-7 AWB | AD FED DOUBLE CLUTCH #20W-25-7 AWP | Producing / injecting | 16943.74 | 3735.39 | 16943.74 | 16943.74 | 13.44 | 16943.74 | PASS |
| Blackburn Offsets | (LOEFFLER K 01-67-1HN) (05-123-35835) | LOEFFLER K 01-67-1HN | LOEFFLER K 01-67-1HN | OWB\OWB | Suspended | 6625.00 | 1327.69 | 6625.00 | 6725.84 | 13.64 | 6725.84 | PASS |
| Blackburn Offsets | (ISHIGURO 1) (05-123-11904) | ISHIGURO 1 | ISHIGURO 1 | OWB\OWB | Abandoned | 11955.58 | 1317.84 | 11955.58 | 12069.74 | 14.15 | 12069.74 | PASS |
| Blackburn Offsets | (AD FED DOUBLE CLUTCH #20W-25-6) (05-123-45040) | AD FED DOUBLE CLUTCH #20W-25-6 | AD FED DOUBLE CLUTCH #20W-25-6 AWB | AD FED DOUBLE CLUTCH #20W-25-6 AWP | Producing / injecting | 16943.74 | 3984.24 | 16943.74 | 16943.74 | 14.27 | 16943.74 | PASS |
| Blackburn Offsets | (AD FED J EVANS #20W-25-5) (05-123-45038) | AD FED J EVANS #20W-25-5 | AD FED J EVANS #20W-25-5 AWB | AD FED J EVANS #20W-25-5 AWP | Producing / injecting | 16943.74 | 4183.81 | 16943.74 | 16943.74 | 15.01 | 16943.74 | PASS |
| Blackburn Offsets | STATE-HUME #90750 (05-123-12899) | STATE-HUME #90750 | STATE-HUME #90750 | OWB\OWB | Abandoned | 11734.36 | 1381.08 | 11734.36 | 11888.16 | 15.23 | 11888.16 | PASS |
| Blackburn Offsets | (WASS 5) (05-123-13781) | WASS 5 | WASS 5 | OWB\OWB | Abandoned | 16924.55 | 2349.35 | 16924.55 | 16943.74 | 15.34 | 16943.74 | PASS |
| Blackburn Offsets | (AD FED J EVANS #20W-25-4) (05-123-41135) | AD FED J EVANS #20W-25-4 | AD FED J EVANS #20W-25-4 AWB | AD FED J EVANS #20W-25-4 AWP | Producing / injecting | 16943.74 | 4308.64 | 16943.74 | 16943.74 | 15.35 | 16943.74 | PASS |
| Blackburn Offsets | (KFKA J 25-13) (05-123-19224) | KFKA J 25-13 | KFKA J 25-13 | OWB\OWB | Abandoned | 13073.81 | 1711.83 | 13073.81 | 13279.59 | 16.07 | 13279.59 | PASS |
| Blackburn Offsets | (AD FED J EVANS #20W-25-3) (05-123-41133) | AD FED J EVANS #20W-25-3 | AD FED J EVANS #20W-25-3 AWB | AD FED J EVANS #20W-25-3 AWP | Producing / injecting | 16943.74 | 4571.34 | 16943.74 | 16943.74 | 16.23 | 16943.74 | PASS |



Closest Approach Clearance Summary Report

CAPITOL 07N (REV-E.0) PWP - SPE WPTS Stop Drilling HSE Risk (2017)

Page 6 of 9



| REFERENCE WELLPATH IDENTIFICATION | | | |
|-----------------------------------|---|-----------|-----------------|
| Operator | PDC ENERGY INC | Well | CAPITOL 07N |
| Field | WELD COUNTY (NAD83/GRID) | API/Legal | |
| Facility | SEC.36-T05N-R66W | Wellbore | CAPITOL 07N PWB |
| Slot | SLOT#07 CAPITOL 07N (227'FSL & 2355'FWL,SEC.36) | | |

| CALCULATION RANGE & CUTOFF | | |
|----------------------------|-------------------|--------------------|
| From: 25.00ft MD | To: 16943.74ft MD | C-C Cutoff: (none) |

| OFFSET WELL CLEARANCE SUMMARY (171 Offset Wellpaths selected) Ratios are calculated in Closest Approach plane | | | | | | | | | | | | |
|---|---|----------------------------|--------------------------------|--------------------------------|-----------------------|------------------------|-------------------------|------------------------|--------------------------|-----------|--------------------------|-------------|
| Offset Facility | Offset Slot | Offset Well | Offset Wellbore | Offset Wellpath | Wellbore Status | C-C Clearance Distance | | | Rule Separation Ratio | | | |
| | | | | | | Ref MD [ft] | Min C-C Clear Dist [ft] | Diverging from MD [ft] | Ref MD of Min Ratio [ft] | Min Ratio | Min Ratio Dvrg from [ft] | Rule Status |
| Blackburn Offsets | (CAVANAGH 36-10H6) (05-123-18232) | CAVANAGH 36-10H6 | CAVANAGH 36-10H6 | OWB\OWB | Abandoned | 9153.17 | 1112.35 | 9153.17 | 9246.28 | 16.64 | 9246.28 | PASS |
| Blackburn Offsets | (AD FED J EVANS #20W-25-2) (05-123-45041) | AD FED J EVANS #20W-25-2 | AD FED J EVANS #20W-25-2 AWB | AD FED J EVANS #20W-25-2 AWP | Producing / injecting | 16943.74 | 4805.58 | 16943.74 | 16943.74 | 17.04 | 16943.74 | PASS |
| Blackburn Offsets | (AD FED J EVANS #20W-25-1) (05-123-41137) | AD FED J EVANS #20W-25-1 | AD FED J EVANS #20W-25-1 AWB | AD FED J EVANS #20W-25-1 AWP | Producing / injecting | 16943.74 | 4917.68 | 16943.74 | 16943.74 | 17.45 | 16943.74 | PASS |
| Blackburn Offsets | (WASS 6) (05-123-13265) | WASS 6 | WASS 6 | OWB\OWB | Abandoned | 15622.19 | 2637.87 | 15622.19 | 15972.31 | 19.10 | 15972.31 | PASS |
| Blackburn Offsets | (CURTIS 37-25) (05-123-31136) | CURTIS 37-25 | CURTIS 37-25 | OWB\OWB | Abandoned | 12592.22 | 1959.30 | 12592.22 | 12855.53 | 19.40 | 12855.53 | PASS |
| Blackburn Offsets | (LOEFFLER K 01-66-1HN ST) (05-123-35834) | LOEFFLER K 01-66-1HN ST | LOEFFLER K 01-66-1HN ST | OWB\OWB | Producing / injecting | 6525.00 | 1963.32 | 6525.00 | 6661.11 | 19.55 | 6661.11 | PASS |
| Blackburn Offsets | (LOEFFLER K 01-65HN) (05-123-37739) | LOEFFLER K 01-65HN | LOEFFLER K 01-65HN | OWB\OWB | Producing / injecting | 6525.00 | 2205.25 | 6525.00 | 6646.03 | 21.41 | 6646.03 | PASS |
| Blackburn Offsets | (WASS 1) (05-123-10976) | WASS 1 | WASS 1 | OWB\OWB | Abandoned | 14426.21 | 2716.22 | 14426.21 | 14840.92 | 22.09 | 14840.92 | PASS |
| Blackburn Offsets | (ISHIGURO 24-36) (05-123-28119) | ISHIGURO 24-36 | ISHIGURO 24-36 | OWB\OWB | Abandoned | 9940.68 | 2051.51 | 9940.68 | 10112.92 | 22.23 | 10112.92 | PASS |
| Blackburn Offsets | (GP J EVANS FED #20W-20-16) (05-123-41134) | GP J EVANS FED #20W-20-16 | GP J EVANS FED #20W-20-16 AWB | GP J EVANS FED #20W-20-16 AWP | Producing / injecting | 16943.74 | 5649.47 | 16943.74 | 16943.74 | 22.55 | 16943.74 | PASS |
| Blackburn Offsets | (GP-DAIRY 1-20-19) (05-123-40328) | GP-DAIRY 1-20-19 | GP-DAIRY 1-20-19 ST01 | GP-DAIRY 1-20-19 ST01 | Producing / injecting | 16943.74 | 4816.77 | 16943.74 | 16943.74 | 23.02 | 16943.74 | PASS |
| Blackburn Offsets | (PEPPLER 2-36) (05-123-14438) | PEPPLER 2-36 | PEPPLER 2-36 | OWB\OWB | Abandoned | 9141.73 | 1549.64 | 9141.73 | 9353.01 | 23.08 | 9353.01 | PASS |
| Blackburn Offsets | (GP HILLSIDE FED #20W-20-15) (05-123-41145) | GP HILLSIDE FED #20W-20-15 | GP HILLSIDE FED #20W-20-15 AWB | GP HILLSIDE FED #20W-20-15 AWP | Producing / injecting | 16943.74 | 5826.31 | 16943.74 | 16943.74 | 23.09 | 16943.74 | PASS |
| | | | | OBW\OBW | | 6525.00 | 3623.12 | 6525.00 | 6560.56 | 23.72 | 6560.56 | PASS |

| OFFSET WELL CLEARANCE SUMMARY (171 Offset Wellpaths selected) Ratios are calculated in Closest Approach plane | | | | | | | | | | | | |
|---|---|----------------------------|--------------------------------|--------------------------------|-----------------------|------------------------|-------------------------|------------------------|--------------------------|-----------|--------------------------|-------------|
| Offset Facility | Offset Slot | Offset Well | Offset Wellbore | Offset Wellpath | Wellbore Status | C-C Clearance Distance | | | Rule Separation Ratio | | | |
| | | | | | | Ref MD [ft] | Min C-C Clear Dist [ft] | Diverging from MD [ft] | Ref MD of Min Ratio [ft] | Min Ratio | Min Ratio Dvrg from [ft] | Rule Status |
| Blackburn Offsets | (GEMINI K FEDERAL 01-99HZ) (05-123-30686) | GEMINI K FEDERAL 01-99HZ | GEMINI K FEDERAL 01-99HZ | | Producing / injecting | | | | | | | |
| Blackburn Offsets | (GP HILLSIDE FED #20W-20-14) (05-123-44430) | GP HILLSIDE FED #20W-20-14 | GP HILLSIDE FED #20W-20-14 AWB | GP HILLSIDE FED #20W-20-14 AWP | Producing / injecting | 16943.74 | 6043.36 | 16943.74 | 16943.74 | 23.80 | 16943.74 | PASS |
| Blackburn Offsets | (GP HILLSIDE FED #20W-20-13) (05-123-41143) | GP HILLSIDE FED #20W-20-13 | GP HILLSIDE FED #20W-20-13 AWB | GP HILLSIDE FED #20W-20-13 AWP | Producing / injecting | 16943.74 | 6281.00 | 16943.74 | 16943.74 | 24.66 | 16943.74 | PASS |
| Blackburn Offsets | (LOEFFLER 1-18) (05-123-11673) | LOEFFLER 1-18 | LOEFFLER 1-18 | OWB\OWB | Producing / injecting | 6531.58 | 1402.95 | 6531.58 | 6660.93 | 26.28 | 6660.93 | PASS |
| Blackburn Offsets | (PEPPLER 1-36) (05-123-13270) | PEPPLER 1-36 | PEPPLER 1-36 | OWB\OWB | Abandoned | 7850.01 | 1606.42 | 7850.01 | 7961.40 | 26.97 | 7961.40 | PASS |
| Blackburn Offsets | (FREEDA REEVE 3-1) (05-123-15083) | FREEDA REEVE 3-1 | FREEDA REEVE 3-1 | OWB\OWB | Abandoned | 6400.65 | 1522.45 | 6400.65 | 6473.32 | 27.19 | 6473.32 | PASS |
| Blackburn Offsets | (ISHIGURO 3) (05-123-12891) | ISHIGURO 3 | ISHIGURO 3 | OWB\OWB | Abandoned | 11823.64 | 2601.19 | 11823.64 | 12302.83 | 28.07 | 12302.83 | PASS |
| Blackburn Offsets | (REHMER 1) (05-123-12607) | REHMER 1 | REHMER 1 | Wellbore #1OWB\OWB | Abandoned | 25.00 | 1187.08 | 7925.00 | 325.00 | 28.88 | 9625.00 | PASS |
| Blackburn Offsets | (ISHIGURO 30-31) (05-123-28189) | ISHIGURO 30-31 | ISHIGURO 30-31 | OWB\OWB | Producing / injecting | 12391.38 | 3393.68 | 12391.38 | 13277.48 | 29.59 | 13277.48 | PASS |
| Blackburn Offsets | (JOHNSON X1 1-1-06) (05-123-26716) | JOHNSON X1 1-1-06 | JOHNSON X1 1-1-06 | OWB\OWB | Producing / injecting | 6717.71 | 3997.77 | 6717.71 | 7139.35 | 32.02 | 7139.35 | PASS |
| Blackburn Offsets | (REEVE, FREDA 1-1) (05-123-11780) | REEVE, FREDA 1-1 | REEVE, FREDA 1-1 | OWB\OWB | Abandoned | 6370.01 | 1871.09 | 6370.01 | 6467.86 | 33.33 | 6467.86 | PASS |
| SEC.24-T5N-R66W | SLOT#11 DUELL #2 (05-123-12788) PA | DUELL #2 | DUELL #2 AWB | DUELL #2 AWP | Abandoned | 16943.74 | 3165.38 | 16943.74 | 16943.74 | 33.40 | 16943.74 | PASS |



Closest Approach Clearance Summary Report

CAPITOL 07N (REV-E.0) PWP - SPE WPTS Stop Drilling HSE Risk (2017)

Page 7 of 9



| REFERENCE WELLPATH IDENTIFICATION | | | |
|-----------------------------------|---|-----------|-----------------|
| Operator | PDC ENERGY INC | Well | CAPITOL 07N |
| Field | WELD COUNTY (NAD83/GRID) | API/Legal | |
| Facility | SEC.36-T05N-R66W | Wellbore | CAPITOL 07N PWB |
| Slot | SLOT#07 CAPITOL 07N (227'FSL & 2355'FWL,SEC.36) | | |

| CALCULATION RANGE & CUTOFF | | |
|----------------------------|-------------------|--------------------|
| From: 25.00ft MD | To: 16943.74ft MD | C-C Cutoff: (none) |

| OFFSET WELL CLEARANCE SUMMARY (171 Offset Wellpaths selected) Ratios are calculated in Closest Approach plane | | | | | | | | | | | | |
|---|--|----------------------|----------------------|-----------------|-----------------------|------------------------|-------------------------|------------------------|--------------------------|-----------|--------------------------|-------------|
| Offset Facility | Offset Slot | Offset Well | Offset Wellbore | Offset Wellpath | Wellbore Status | C-C Clearance Distance | | | Rule Separation Ratio | | | |
| | | | | | | Ref MD [ft] | Min C-C Clear Dist [ft] | Diverging from MD [ft] | Ref MD of Min Ratio [ft] | Min Ratio | Min Ratio Dvrg from [ft] | Rule Status |
| Blackburn Offsets | (ISHIGURO 6) (05-123-12893) | ISHIGURO 6 | ISHIGURO 6 | OWB\OWB | Abandoned | 10579.73 | 2666.13 | 10579.73 | 11156.20 | 33.59 | 11156.20 | PASS |
| Blackburn Offsets | (COMMONS Z2 2-2-06) (05-123-26712) | COMMONS Z2 2-2-06 | COMMONS Z2 2-2-06 | OWB\OWB | Producing / injecting | 6153.47 | 4692.36 | 6153.47 | 6741.92 | 34.63 | 6741.92 | PASS |
| Blackburn Offsets | (HAMBLLEN 1-30) (05-123-13151) - Could not confirm gyro from ECMC | HAMBLLEN 1-30 | HAMBLLEN 1-30 | OWB\OWB | Abandoned | 15565.83 | 5100.00 | 15565.83 | 16857.68 | 35.62 | 16857.68 | PASS |
| Blackburn Offsets | (LOEFFLER K 01-66-1HN) (05-123-35834) | LOEFFLER K 01-66-1HN | LOEFFLER K 01-66-1HN | OWB\OWB | Abandoned | 6425.00 | 2545.20 | 6425.00 | 6516.36 | 37.95 | 6516.36 | PASS |
| Blackburn Offsets | (SYLVESTER F 31-32D) (05-123-33215) | SYLVESTER F 31-32D | SYLVESTER F 31-32D | OWB\OWB | Producing / injecting | 9765.21 | 3246.19 | 9765.21 | 10461.77 | 39.35 | 10461.77 | PASS |
| Blackburn Offsets | (LOEFFLER #2-24) (05-123-11888) | LOEFFLER #2-24 | LOEFFLER #2-24 | OWB\OWB | Producing / injecting | 6425.00 | 2098.05 | 6425.00 | 6515.15 | 40.08 | 6515.15 | PASS |
| Blackburn Offsets | (ISHIGURO 4) (05-123-12924) | ISHIGURO 4 | ISHIGURO 4 | OWB\OWB | Abandoned | 11860.36 | 3999.85 | 11860.36 | 13005.22 | 41.63 | 13005.22 | PASS |
| SEC.24-T5N-R66W | Slot #4 SEGL #22-24 (05-123-23842) SI | SEGL 22-24 | SEGL 22-24 AWB | SEGL 22-24 AWP | Drilling | 16943.74 | 3446.34 | 16943.74 | 16943.74 | 42.40 | 16943.74 | PASS |
| Blackburn Offsets | (SYLVESTER 31-5H5) (05-123-18189) - Could not verify surveys | SYLVESTER 31-5H5 | SYLVESTER 31-5H5 | OWB\OWB | Abandoned | 10475.19 | 3992.65 | 10475.19 | 11783.27 | 43.16 | 11783.27 | PASS |
| Blackburn Offsets | (SYLVESTER 1-116) (05-123-18157) | SYLVESTER 1-116 | SYLVESTER 1-116 | OWB\OWB | Abandoned | 391.19 | 2366.23 | 4725.00 | 7321.06 | 43.33 | 7321.06 | PASS |
| Blackburn Offsets | (CITY OF GREELEY 1-30) (05-123-13152) - Could not confirm gyro from ECMC | CITY OF GREELEY 1-30 | CITY OF GREELEY 1-30 | OWB\OWB | Abandoned | 14030.99 | 5485.01 | 14030.99 | 15728.83 | 43.56 | 15728.83 | PASS |
| Blackburn Offsets | (SYLVESTER G 06-30D) (05-123-33120) | SYLVESTER G 06-30D | SYLVESTER G 06-30D | OWB\OWB | Producing / injecting | 339.87 | 2357.47 | 7225.00 | 7248.66 | 45.21 | 7248.66 | PASS |
| Blackburn Offsets | (CITY OF GREELEY 2-30) (05-123-13160) - Could not confirm gyro from ECMC | CITY OF GREELEY 2-30 | CITY OF GREELEY 2-30 | OWB\OWB | Abandoned | 13194.49 | 5209.69 | 13194.49 | 14858.49 | 45.24 | 14858.49 | PASS |
| | Slot #6 SEGL #7-24 (05-123-23840) PA | SEGL 7-24 | SEGL 7-24 AWB | | Drilling | 16943.74 | 4446.61 | 16943.74 | 16943.74 | 45.33 | 16943.74 | PASS |

| OFFSET WELL CLEARANCE SUMMARY (171 Offset Wellpaths selected) Ratios are calculated in Closest Approach plane | | | | | | | | | | | | | |
|--|---|-------------------------|-------------------------|-----------------|-----------------------|------------------------|-------------------------|------------------------|--------------------------|-----------|--------------------------|-------------|--|
| Offset Facility | Offset Slot | Offset Well | Offset Wellbore | Offset Wellpath | Wellbore Status | C-C Clearance Distance | | | Rule Separation Ratio | | | | |
| | | | | | | Ref MD [ft] | Min C-C Clear Dist [ft] | Diverging from MD [ft] | Ref MD of Min Ratio [ft] | Min Ratio | Min Ratio Dvrg from [ft] | Rule Status | |
| SEC.24-T5N-R66W | | | | SEGL 7-24 AWP | | | | | | | | | |
| Blackburn Offsets | (GEMINI K1-11) (05-123-15177) | GEMINI K1-11 | GEMINI K1-11 | OWB\OWB | Suspended | 6399.41 | 2540.93 | 6399.41 | 6525.00 | 45.82 | 6525.00 | PASS | |
| Blackburn Offsets | (SANDAU X4 3-1-06) (05-123-26717) | SANDAU X4 3-1-06 | SANDAU X4 3-1-06 | OWB\OWB | Abandoned | 3697.23 | 5164.19 | 3697.23 | 6901.57 | 47.36 | 16025.00 | PASS | |
| SEC.24-T5N-R66W | SLOT#17 S.E.G.L. #2 (05-123-12475) PA | S.E.G.L. #2 | S.E.G.L. #2 AWB | S.E.G.L. #2 AWP | Abandoned | 16943.74 | 4127.73 | 16943.74 | 16943.74 | 48.06 | 16943.74 | PASS | |
| Blackburn Offsets | (EVANS INDUSTRIAL PARK 2) (05-123-16656) | EVANS INDUSTRIAL PARK 2 | EVANS INDUSTRIAL PARK 2 | OWB\OWB\ | Abandoned | 14420.53 | 6799.42 | 14420.53 | 16861.17 | 50.09 | 16861.17 | PASS | |
| Blackburn Offsets | (GEMINI K1-12) (05-123-15197) | GEMINI K1-12 | GEMINI K1-12 | OWB\OWB | Suspended | 6425.00 | 2794.66 | 6425.00 | 6525.00 | 50.21 | 6525.00 | PASS | |
| SEC.24-T5N-R66W | Slot #9 SEGL #17-24 (05-123-23839) PA | SEGL 17-24 | SEGL 17-24 AWB | SEGL 17-24 AWP | Drilling | 16943.74 | 5225.12 | 16943.74 | 16943.74 | 51.78 | 16943.74 | PASS | |
| Blackburn Offsets | (SYLVESTER F 31-20D) (05-123-33217) | SYLVESTER F 31-20D | SYLVESTER F 31-20D | OWB\OWB | Abandoned | 155.69 | 4253.23 | 9925.00 | 11547.26 | 52.40 | 11547.26 | PASS | |
| Blackburn Offsets | (DOVE HILL Z1 2-6-31) (05-123-26713) | DOVE HILL Z1 2-6-31 | DOVE HILL Z1 2-6-31 | OWB\OWB | Producing / injecting | 8513.10 | 4669.42 | 8513.10 | 9873.30 | 53.40 | 9873.30 | PASS | |
| Blackburn Offsets | (UNION PACIFIC 1-1) (05-123-14011) | UNION PACIFIC 1-1 | UNION PACIFIC 1-1 | OWB\OWB | Abandoned | 6003.88 | 3091.13 | 6003.88 | 6653.69 | 53.55 | 6653.69 | PASS | |
| Blackburn Offsets | (SYLVESTER F 31-33) (05-123-33216) | SYLVESTER F 31-33 | SYLVESTER F 31-33 | OWB\OWB | Producing / injecting | 339.40 | 3399.18 | 8525.00 | 9666.45 | 54.38 | 9666.45 | PASS | |
| Blackburn Offsets | (EVANS INDUSTRIAL PARK 1) (05-123-16337) - Could not confirm gyro from ECMC | EVANS INDUSTRIAL PARK 1 | EVANS INDUSTRIAL PARK 1 | OWB\OWB | Abandoned | 13271.43 | 6658.05 | 13271.43 | 15875.55 | 54.57 | 15875.55 | PASS | |



Closest Approach Clearance Summary Report

CAPITOL 07N (REV-E.0) PWP - SPE WPTS Stop Drilling HSE Risk (2017)
Page 8 of 9



| REFERENCE WELLPATH IDENTIFICATION | | | |
|-----------------------------------|---|-----------|-----------------|
| Operator | PDC ENERGY INC | Well | CAPITOL 07N |
| Field | WELD COUNTY (NAD83/GRID) | API/Legal | |
| Facility | SEC.36-T05N-R66W | Wellbore | CAPITOL 07N PWB |
| Slot | SLOT#07 CAPITOL 07N (227'FSL & 2355'FWL,SEC.36) | | |

| CALCULATION RANGE & CUTOFF | | |
|----------------------------|-------------------|--------------------|
| From: 25.00ft MD | To: 16943.74ft MD | C-C Cutoff: (none) |

| OFFSET WELL CLEARANCE SUMMARY (171 Offset Wellpaths selected) Ratios are calculated in Closest Approach plane | | | | | | | | | | | | | |
|---|---|-----------------------|-----------------------|--------------------|-----------------|------------------------|-------------------------|------------------------|--------------------------|-----------|--------------------------|-------------|--|
| Offset Facility | Offset Slot | Offset Well | Offset Wellbore | Offset Wellpath | Wellbore Status | C-C Clearance Distance | | | Rule Separation Ratio | | | | |
| | | | | | | Ref MD [ft] | Min C-C Clear Dist [ft] | Diverging from MD [ft] | Ref MD of Min Ratio [ft] | Min Ratio | Min Ratio Dvrg from [ft] | Rule Status | |
| SEC.24-T5N-R66W | Slot #8 SEGL #21-24X (05-123-23843) PA | SEGL 21-24X | SEGL 21-24X ST AWB | SEGL 21-24X ST AWP | Drilling | 16943.74 | 4969.08 | 16943.74 | 16943.74 | 54.70 | 16943.74 | PASS | |
| Blackburn Offsets | (CONNELL X3 3-7-31) (05-123-26715) | CONNELL X3 3-7-31 | CONNELL X3 3-7-31 | CONNELL X3 3-7-31 | Abandoned | 7799.91 | 5194.06 | 7799.91 | 8180.15 | 55.77 | 8180.15 | PASS | |
| Blackburn Offsets | (BRANTNER 30-9) (05-123-13310) | BRANTNER 30-9 | BRANTNER 30-9 | OWB\OWB | Abandoned | 14347.72 | 7850.38 | 14347.72 | 16943.74 | 56.19 | 16943.74 | PASS | |
| SEC.24-T5N-R66W | SLOT#16 S.E.G.L. #1 (05-123-11776) PA | S.E.G.L. #1 | S.E.G.L. #1 AWB | S.E.G.L. #1 AWP | Abandoned | 16943.74 | 4102.59 | 16943.74 | 16943.74 | 56.41 | 16943.74 | PASS | |
| SEC.24-T5N-R66W | Slot #8 SEGL #21-24X (05-123-23843) PA | SEGL 21-24X | SEGL 21-24X AWB | SEGL 21-24X AWP | Drilling | 16943.74 | 4918.09 | 16943.74 | 16943.74 | 56.47 | 16943.74 | PASS | |
| Blackburn Offsets | (ELLIS Y1 5-1-06) (05-123-25901) | ELLIS Y1 5-1-06 | ELLIS Y1 5-1-06 | OWB\OWB | Abandoned | 25.00 | 5582.93 | 25.00 | 6478.37 | 57.49 | 16125.00 | PASS | |
| Blackburn Offsets | (GEMINI K 1-10) (05-123-13869) | GEMINI K 1-10 | GEMINI K 1-10 | OWB\OWB | Abandoned | 6376.64 | 3236.82 | 6376.64 | 6517.38 | 58.05 | 6517.38 | PASS | |
| Blackburn Offsets | (COLE X6 4-8-31) (05-123-31836) | COLE X6 4-8-31 | COLE X6 4-8-31 | OWB\OWB | Abandoned | 201.80 | 5322.64 | 7525.00 | 7045.21 | 59.39 | 7045.21 | PASS | |
| Blackburn Offsets | (STEWARTS Z4 6-2-06) (05-123-26711) - Need actual survey data | STEWARTS Z4 6-2-06 | STEWARTS Z4 6-2-06 | OWB\OWB | Abandoned | 25.00 | 5598.65 | 25.00 | 6725.00 | 62.11 | 15325.00 | PASS | |
| Blackburn Offsets | (BRANTNER 30-16) (05-123-13282) | BRANTNER 30-16 | BRANTNER 30-16 | OWB\OWB | Abandoned | 13331.14 | 8020.13 | 13331.14 | 16912.37 | 62.23 | 16912.37 | PASS | |
| Blackburn Offsets | (VALLEY PACK X5 3-5-31) (05-123-26714) | VALLEY PACK X5 3-5-31 | VALLEY PACK X5 3-5-31 | OWB\OWB | Abandoned | 9218.60 | 5267.91 | 9218.60 | 11247.24 | 63.06 | 11247.24 | PASS | |
| SEC.24-T5N-R66W | Slot #3 SEGL #4-24 (05-123-23050) SI | SEGL 4-24 | SEGL 4-24 (AWB) | SEGL 4-24 (AWP#1) | Other | 16943.74 | 5695.25 | 16943.74 | 16943.74 | 63.06 | 16943.74 | PASS | |
| SEC.24-T5N-R66W | Slot #2 SEGL #18-24 (05-123-23051) SI | SEGL 18-24 | SEGL 18-24 (AWB) | SEGL 18-24 (AWP#1) | Other | 16943.74 | 4865.59 | 16943.74 | 16943.74 | 63.89 | 16943.74 | PASS | |
| | (SYLVESTER 1) (05-123-12010) | SYLVESTER 1 | SYLVESTER 1 | OWB\OWB | Abandoned | 319.50 | 3667.83 | 7925.00 | 9152.03 | 64.10 | 9152.03 | PASS | |

| OFFSET WELL CLEARANCE SUMMARY (171 Offset Wellpaths selected) Ratios are calculated in Closest Approach plane | | | | | | | | | | | | |
|--|---|------------------------------|------------------------------|-------------------|-----------------------|------------------------|-------------------------|------------------------|--------------------------|-----------|--------------------------|-------------|
| Offset Facility | Offset Slot | Offset Well | Offset Wellbore | Offset Wellpath | Wellbore Status | C-C Clearance Distance | | | Rule Separation Ratio | | | |
| | | | | | | Ref MD [ft] | Min C-C Clear Dist [ft] | Diverging from MD [ft] | Ref MD of Min Ratio [ft] | Min Ratio | Min Ratio Dvrg from [ft] | Rule Status |
| Blackburn Offsets | | | | | | | | | | | | |
| Blackburn Offsets | (SHAMROCK FEDERAL PC G 07-30D) (05-123-34885) | SHAMROCK FEDERAL PC G 07-30D | SHAMROCK FEDERAL PC G 07-30D | OWB\OWB | Producing / injecting | 6375.42 | 5768.89 | 6375.42 | 6595.78 | 64.16 | 6595.78 | PASS |
| Blackburn Offsets | (HAYS 31-2H5) (05-123-18211) | HAYS 31-2H5 | HAYS 31-2H5 | OWB\OWB | Abandoned | 11473.98 | 6693.75 | 11473.98 | 14534.72 | 64.50 | 14534.72 | PASS |
| Blackburn Offsets | (GP-DAIRY 1-20-19) (05-123-40328) | GP-DAIRY 1-20-19 | GP-DAIRY 1-20-19 | OWB\OWB | Producing / injecting | 16943.74 | 10927.92 | 16943.74 | 16943.74 | 64.79 | 16943.74 | PASS |
| SEC.24-T5N-R66W | Slot #1 SEGL #3-24 (05-123-20620) PA | SEGL 3-24 | SEGL 3-24 (AWB) | SEGL 3-24 (AWP#1) | Other | 16943.74 | 5482.06 | 16943.74 | 16943.74 | 65.40 | 16943.74 | PASS |
| SEC.24-T5N-R66W | Slot #5 SEGL #2-24 (05-123-23841) PA | SEGL 2-24 | SEGL 2-24 AWB | SEGL 2-24 AWP | Drilling | 16943.74 | 5764.68 | 16943.74 | 16943.74 | 67.02 | 16943.74 | PASS |
| Blackburn Offsets | (RE-1 X7 4-6-31) (05-123-31863) | RE-1 X7 4-6-31 | RE-1 X7 4-6-31 | OWB\OWB | Abandoned | 25.00 | 5341.11 | 8425.00 | 9857.10 | 67.82 | 9857.10 | PASS |
| Blackburn Offsets | (GEMINI K1-9) (05-123-13879) | GEMINI K1-9 | GEMINI K1-9 | OWB\OWB | Abandoned | 6368.79 | 3885.81 | 6368.79 | 6592.95 | 68.33 | 6592.95 | PASS |
| Blackburn Offsets | (HAYS 31-1H5) (05-123-11327) | HAYS 31-1H5 | HAYS 31-1H5 | OWB\OWB | Abandoned | 11790.07 | 7917.02 | 11790.07 | 15802.44 | 70.63 | 15802.44 | PASS |
| Blackburn Offsets | (MAIN Y3 6-8-31) (05-123-31835) | MAIN Y3 6-8-31 | MAIN Y3 6-8-31 | OWB\OWB | Suspended | 314.16 | 5853.37 | 8125.00 | 6781.98 | 72.09 | 16225.00 | PASS |
| Blackburn Offsets | (GEMINI K 1-13) (05-123-17669) | GEMINI K 1-13 | GEMINI K 1-13 | OWB\OWB | Abandoned | 6384.97 | 4384.80 | 6384.97 | 6549.56 | 75.02 | 6549.56 | PASS |
| Blackburn Offsets | (LASALLE PARK Y5 5-5-31) (05-123-25898) | LASALLE PARK Y5 5-5-31 | LASALLE PARK Y5 5-5-31 | OWB\OWB | Producing / injecting | 445.85 | 5624.04 | 9025.00 | 12080.83 | 75.17 | 12080.83 | PASS |



Closest Approach Clearance Summary Report

CAPITOL 07N (REV-E.0) PWP - SPE WPTS Stop Drilling HSE Risk (2017)

Page 9 of 9



| REFERENCE WELLPATH IDENTIFICATION | | | |
|-----------------------------------|---|-----------|-----------------|
| Operator | PDC ENERGY INC | Well | CAPITOL 07N |
| Field | WELD COUNTY (NAD83/GRID) | API/Legal | |
| Facility | SEC.36-T05N-R66W | Wellbore | CAPITOL 07N PWB |
| Slot | SLOT#07 CAPITOL 07N (227'FSL & 2355'FWL,SEC.36) | | |

| CALCULATION RANGE & CUTOFF | | |
|----------------------------|-------------------|--------------------|
| From: 25.00ft MD | To: 16943.74ft MD | C-C Cutoff: (none) |

| OFFSET WELL CLEARANCE SUMMARY (171 Offset Wellpaths selected) Ratios are calculated in Closest Approach plane | | | | | | | | | | | | |
|---|--|---------------------------|---------------------------|-----------------|-----------------------|------------------------|-------------------------|------------------------|--------------------------|-----------|--------------------------|-------------|
| Offset Facility | Offset Slot | Offset Well | Offset Wellbore | Offset Wellpath | Wellbore Status | C-C Clearance Distance | | | Rule Separation Ratio | | | |
| | | | | | | Ref MD [ft] | Min C-C Clear Dist [ft] | Diverging from MD [ft] | Ref MD of Min Ratio [ft] | Min Ratio | Min Ratio Dvrg from [ft] | Rule Status |
| Blackburn Offsets | (DABCO 1) (05-123-10955) | DABCO 1 | DABCO 1 | OWB\OWB | Abandoned | 3902.25 | 4248.13 | 3902.25 | 6725.00 | 75.54 | 6725.00 | PASS |
| Blackburn Offsets | (HUMAN BEAN Y2 5-7-31) (05-123-25900) | HUMAN BEAN Y2 5-7-31 | HUMAN BEAN Y2 5-7-31 | OWB\OWB | Abandoned | 353.79 | 5645.58 | 8325.00 | 6935.98 | 76.49 | 15725.00 | PASS |
| Blackburn Offsets | (GEMINI K FEDERAL 1-15) (05-123-13871) | GEMINI K FEDERAL 1-15 | GEMINI K FEDERAL 1-15 | OWB\OWB | Abandoned | 6376.30 | 4299.68 | 6376.30 | 6529.74 | 76.88 | 6529.74 | PASS |
| Blackburn Offsets | (HAYS FEDERAL 31-8H5)(05-123-18213) | HAYS FEDERAL 31-8H5 | HAYS FEDERAL 31-8H5 | OWB\OWB | Abandoned | 10403.55 | 7721.42 | 10403.55 | 14769.84 | 78.95 | 14769.84 | PASS |
| Blackburn Offsets | (DABCO 2) (05-123-11528) | DABCO 2 | DABCO 2 | OWB\OWB | Abandoned | 2913.36 | 5390.27 | 2913.36 | 6975.98 | 79.96 | 6975.98 | PASS |
| Blackburn Offsets | (GOODNER Y4 7-1-06) (05-123-25899) | GOODNER Y4 7-1-06 | GOODNER Y4 7-1-06 | OWB\OWB | Abandoned | 25.00 | 5615.25 | 8125.00 | 6425.00 | 82.29 | 15625.00 | PASS |
| Blackburn Offsets | (FARMERS Y7 6-6-31) (05-123-25896) | FARMERS Y7 6-6-31 | FARMERS Y7 6-6-31 | OWB\OWB | Abandoned | 301.63 | 5885.28 | 8725.00 | 9463.40 | 83.60 | 14525.00 | PASS |
| Blackburn Offsets | (H&S 1) (05-123-11529) | H&S 1 | H&S 1 | OWB\OWB | Abandoned | 6325.00 | 4871.49 | 6325.00 | 6680.62 | 84.38 | 6680.62 | PASS |
| Blackburn Offsets | (MCCOUTCHEONS Y8 7-5-31) (05-123-25895) | MCCOUTCHEONS Y8 7-5-31 | MCCOUTCHEONS Y8 7-5-31 | OWB\OWB | Abandoned | 269.19 | 5897.76 | 9625.00 | 14525.00 | 85.63 | 14525.00 | PASS |
| Blackburn Offsets | (BALLFIELD Y6 7-7-31) (05-123-25897) | BALLFIELD Y6 7-7-31 | BALLFIELD Y6 7-7-31 | OWB\OWB | Abandoned | 383.04 | 5862.44 | 8825.00 | 14083.26 | 89.68 | 16525.00 | PASS |
| Blackburn Offsets | (SHAMROCK FEDERAL G 07-29D) (05-123-34884) | SHAMROCK FEDERAL G 07-29D | SHAMROCK FEDERAL G 07-29D | OWB\OWB | Producing / injecting | 6362.30 | 6684.18 | 6362.30 | 6715.62 | 91.05 | 6715.62 | PASS |
| Blackburn Offsets | (AMBER FEDERAL G06-21D) (05-123-34902) | AMBER FEDERAL G06-21D | AMBER FEDERAL G06-21D | OWB\OWB | Suspended | 6325.00 | 6419.11 | 6325.00 | 6725.00 | 91.77 | 6725.00 | PASS |
| Blackburn Offsets | (GOODNER G FEDERAL 6-11) (05-123-12314) | GOODNER G FEDERAL 6-11 | GOODNER G FEDERAL 6-11 | OWB\OWB | Producing / injecting | 6379.90 | 5972.40 | 6379.90 | 6783.49 | 105.25 | 6783.49 | PASS |
| | | AMBER FEDERAL G06-22D | AMBER FEDERAL G06-22D | OWB\OWB | Suspended | 5057.42 | 7598.24 | 5057.42 | 6953.99 | 106.30 | 6953.99 | PASS |

OFFSET WELL CLEARANCE SUMMARY (171 Offset Wellpaths selected) Ratios are calculated in Closest Approach plane

| Offset Facility | Offset Slot | Offset Well | Offset Wellbore | Offset Wellpath | Wellbore Status | C-C Clearance Distance | | | Rule Separation Ratio | | | |
|-------------------|--|----------------|-----------------|-----------------|-----------------|------------------------|-------------------------|------------------------|--------------------------|-----------|--------------------------|-------------|
| | | | | | | Ref MD [ft] | Min C-C Clear Dist [ft] | Diverging from MD [ft] | Ref MD of Min Ratio [ft] | Min Ratio | Min Ratio Dvrg from [ft] | Rule Status |
| Blackburn Offsets | (AMBER FEDERAL G06-22D) (05-123-34904) | | | | | | | | | | | |
| Blackburn Offsets | (CURTIS G 6-8) (05-123-21981) | CURTIS G 6-8 | CURTIS G 6-8 | OWB\OWB | Abandoned | 945.79 | 6909.04 | 945.79 | 10686.41 | 108.15 | 10686.41 | PASS |
| Blackburn Offsets | (AMBER G 05-32D) (05-123-34903) | AMBER G 05-32D | AMBER G 05-32D | OWB\OWB | Suspended | 25.00 | 8113.72 | 6125.00 | 7161.29 | 113.33 | 7161.29 | PASS |
| Blackburn Offsets | (MCCARTHY 1) (05-123-10630) | MCCARTHY 1 | MCCARTHY 1 | OWB\OWB | Abandoned | 6325.00 | 6668.24 | 6325.00 | 6769.51 | 117.82 | 6769.51 | PASS |
| Blackburn Offsets | (CURTIS G 6-7) (05-123-19429) | CURTIS G 6-7 | CURTIS G 6-7 | OWB\OWB | Suspended | 1620.34 | 6756.39 | 5125.00 | 6993.37 | 119.80 | 6993.37 | PASS |
| Blackburn Offsets | (DEVOTIE #1-6) (05-123-11773) | DEVOTIE #1-6 | DEVOTIE #1-6 | OWB\OWB | Abandoned | 5837.84 | 7182.37 | 5837.84 | 6847.80 | 126.69 | 6847.80 | PASS |
| Blackburn Offsets | (DEVOTIE 2-6) (05-123-14919) | DEVOTIE 2-6 | DEVOTIE 2-6 | OWB\OWB | Abandoned | 6325.00 | 7738.50 | 6325.00 | 6753.58 | 132.65 | 6753.58 | PASS |
| Blackburn Offsets | (MERCURE 6-1) (05-123-13626) | MERCURE 6-1 | MERCURE 6-1 | OWB\OWB | Abandoned | 6325.00 | 8918.66 | 6325.00 | 6825.00 | 155.88 | 6825.00 | PASS |