

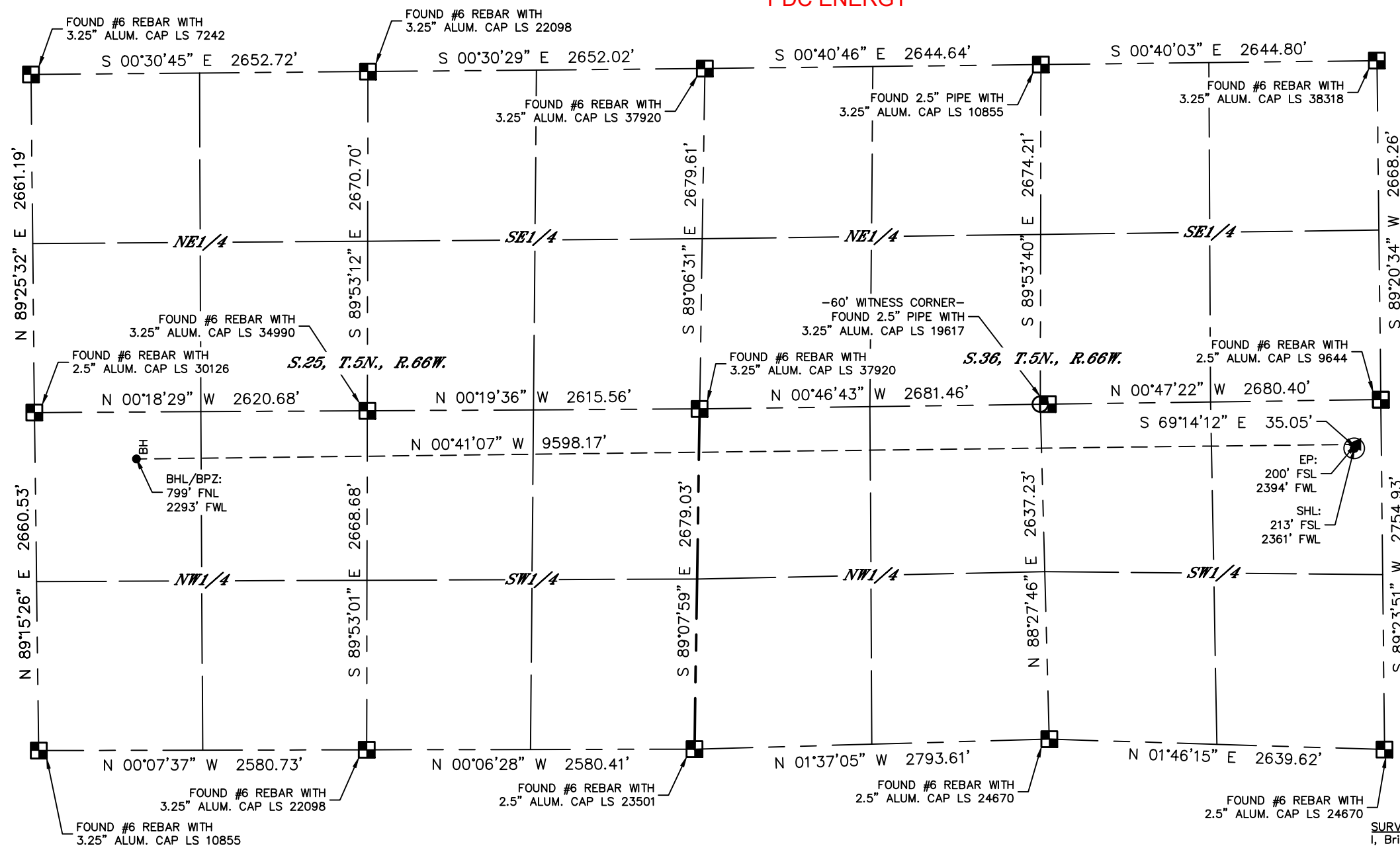


Lat40°, Inc. 6250 W. 10th Street, Unit 2, Greeley, CO 970-515-5294

# WELL LOCATION CERTIFICATE

CAPITOL 08N  
PDC ENERGY

Q-Q: SESW  
SECTION: 36  
TOWNSHIP: 5N  
RANGE: 66W  
6TH. P.M.  
WELD COUNTY, CO



### LEGEND

- = ALIQUOT MONUMENT AS DESCRIBED
- = CALCULATED POSITION
- = SURFACE HOLE LOCATION (SHL)
- ▲ = ENTRY POINT LOCATION (EP)
- = BOTTOM HOLE LOCATION (BHL) / BOTTOM OF PRODUCTIVE ZONE (BPZ)

### NOTE:

- 1) Bearings shown are Grid Bearings of the Colorado State Plane Coordinate System, North Zone, North American Datum 1983. The lineal dimensions as contained herein are based upon the "U.S. Survey Foot."
- 2) Distances to section lines measured at 90 degrees from said section lines.
- 3) Ground elevations are based on an observed GPS elevation (NAVD 1988 DATUM).
- 4) Latitude and Longitude shown are (NAD 83 DATUM).
- 5) IMPROVEMENTS: See LOCATION DRAWING for all visible improvements.
- 6) This map does not represent a boundary survey.
- 7) According to Colorado law, you must commence any legal action based upon any defect in this W.L.C. within three years after you discover such defect. In no event, may any action based upon any defect in this survey be commenced more than ten years after the date of the certificate shown hereon. (13-80-105 C.R.S.)

CLIENT: PDC ENERGY, INC.				LANDMAN: KRISTY WEYERMAN			
INSTRUMENT OPERATOR: JOE DIGREGORIO				SURVEY DATE: 5/9/2022		SURFACE USE: CROPLAND	
SHL FOOTAGE	SHL LAT °	SHL LONG °	SHL PDOP	SHL ELEV (FT.)	SHL 1/4/1/4	SHL S-T-R	
213 FSL 2361 FWL	40.349025	-104.726626	1.6	4664	SESW	36-5-66	

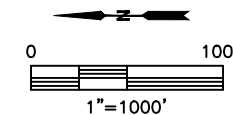
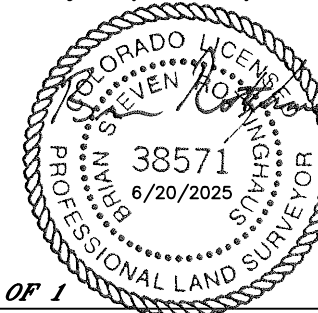
EP FOOTAGE	EP LAT °	EP LONG °	EP S-T-R
200 FSL 2394 FWL	40.348990	-104.726508	36-5-66

BPZ FOOTAGE	BPZ LAT °	BPZ LONG °	BPZ S-T-R
799 FNL 2293 FWL	40.375330	-104.726620	25-5-66

BHL FOOTAGE	BHL LAT °	BHL LONG °	BHL S-T-R
799 FNL 2293 FWL	40.375330	-104.726620	25-5-66

### SURVEYOR'S STATEMENT

I, Brian S. Rottinghaus, a Colorado Licensed Professional Land Surveyor, do hereby state that this Well Location Certificate was prepared from an actual field survey by me or under my personal supervision on the date shown hereon, and correctly shows the well surface hole location as staked on the ground in relation to the existing section line monumentation as indicated hereon, all this to the best of my knowledge, information and belief. That this is not a Land Survey Plat or an Improvement Survey Plat, and that it is not to be relied upon for establishment of fence, building, or other future improvement lines. This certificate is not a guaranty or warranty, either expressed or implied.



SHEET 1 OF 1

Brian S. Rottinghaus—On behalf of Lat40°, Inc.  
Colorado Licensed Professional  
Land Surveyor No. 38571

DATE: 6/20/2025  
PROJECT#: 2021204.01