

SR 11-15 Wellbore Diagram

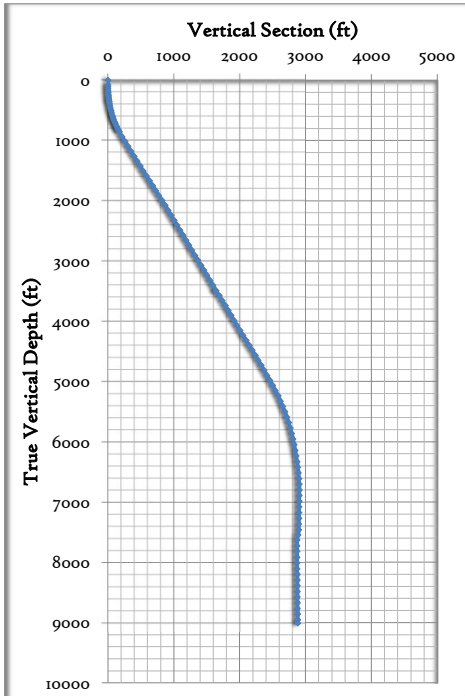
Last Updated: 6/11/2025



Well	County		API	
SR 11-15	Garfield		05-045-17102	
Location	Spud Date	PBTD	TD	Surf TOC
NWSE 9 7S94W	8/6/2009	9,666	9,715	Surface
Mineral/Surface	Lease #	Top Perf	Bot Perf	Prod TOC
Federal	COC063721	6,995	9,610	4,800

Wellbore details				
CASING DETAIL	Depth	Size	Weight	Grade
Conductor Csg	66	18	0.0	
Cement 25				
Hole size	24	Notes:		
	Depth	Size	Weight	Grade
Surface Csg	3,895	9 5/8	35.4	J-55
Cement 1,091				
Hole size	13 1/2	Notes:		
	Depth	Size	Weight	Grade
Prod Csg	9,702	4 1/2	11.6	I-80
Cement 875				
Hole size	7 7/8	Notes:		
TUBING DETAIL	9,267	2 3/8	4.70	N-80
Current EOT	87%	Notes:		

Formation Top	Depth (ft)
Wasatch G	3,785
MesaVerde	6,297
Cameo	8,732



Stages and Perf intervals	Formation Tops	Wellbore Details
		Cond Csg: 18" O# set @ 66'
		Hole Size: 24"
		Cement: 25
		Surf TOC: Surface
		VISU
		Surf Csg: 9-5/8"
		35.38333333333333# J-
		55 eot @ 3895'
		Hole Size: 13-1/2"
		Cement: 1091
	Wasatch G 3,785	
		Prod TOC: 4,800
		CBL
	MesaVerde 6,297	
6,995 7,206 MV 7		
7,242 7,493 MV 6		
7,806 7,965 MV 5		
8,002 8,157 MV 4		
8,227 8,681 MV 3		
8,479 8,829 MV 2		
8,786 9,034 MV 1		
9,106 9,345 Cameo	Cameo 8,732	
9,440 9,610 Lower Cameo		
		Tubing: 2-3/8" 4.7# N-80 set @ 9267'
		Prod Csg: 4-1/2" 11.6# I-80 set @ 9702'
		Hole Size: 7-7/8"
		Cement: 875
PBTD: 9,666		TD: 9,715