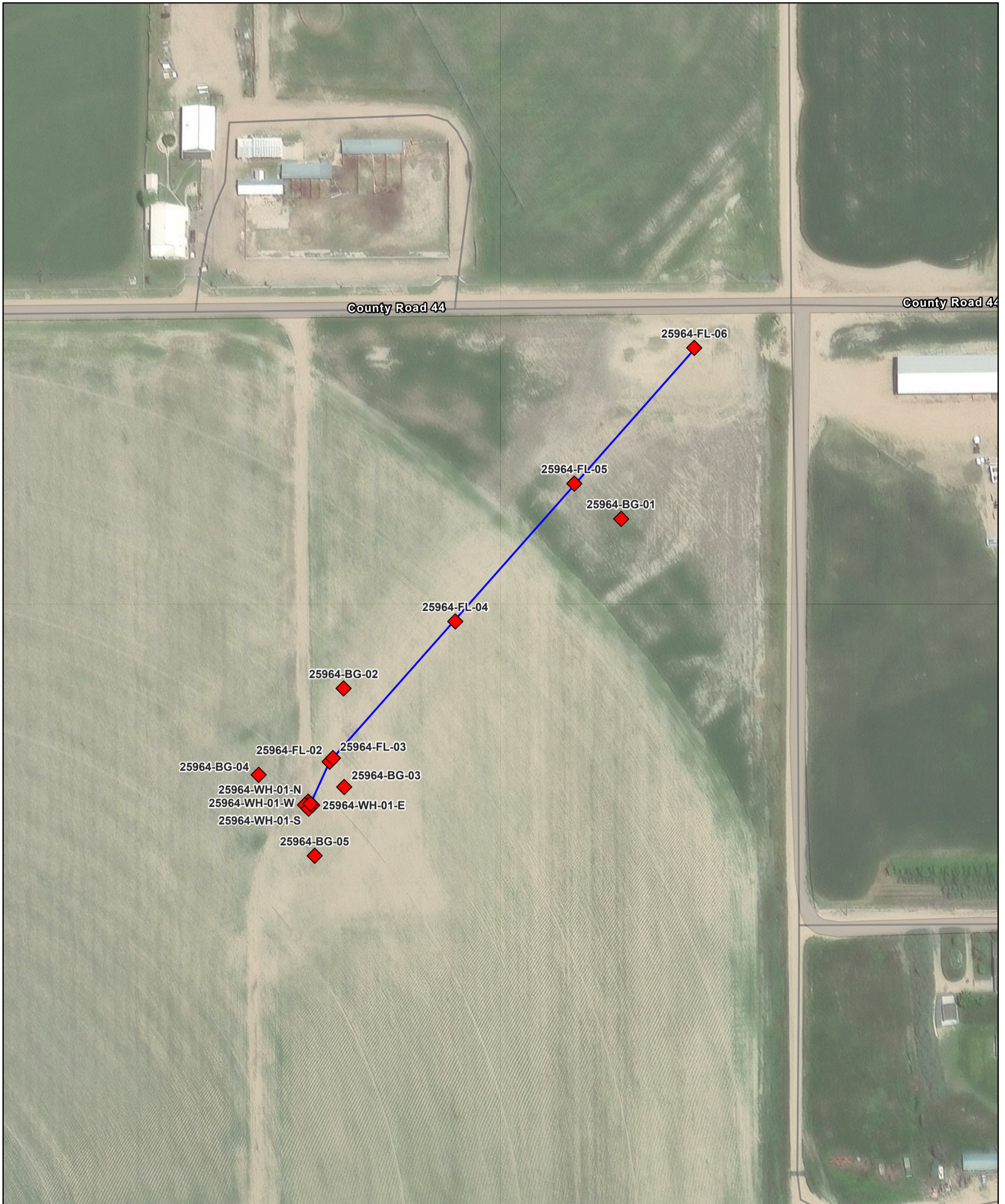


Rem 25964 - Proposed Flowline Soil Sample Map



6/13/2025, 4:07:52 PM

Sample Location (Editable)

◆ Proposed Location

Production Line (Editable)

— Preliminary (QA/QC'd From Site Map)

Access Roads (Editable)

— Unknown Status

▭ Initial Assessment Boundary (Editable)

World Imagery

Low Resolution 15m Imagery

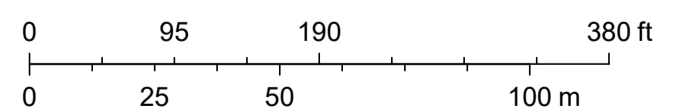
High Resolution 60cm Imagery

High Resolution 30cm Imagery

Citations

30cm Resolution Metadata

1:1,512



Sources: Esri, TomTom, Garmin, FAO, NOAA, USGS, © OpenStreetMap contributors, and the GIS User Community, Maxar