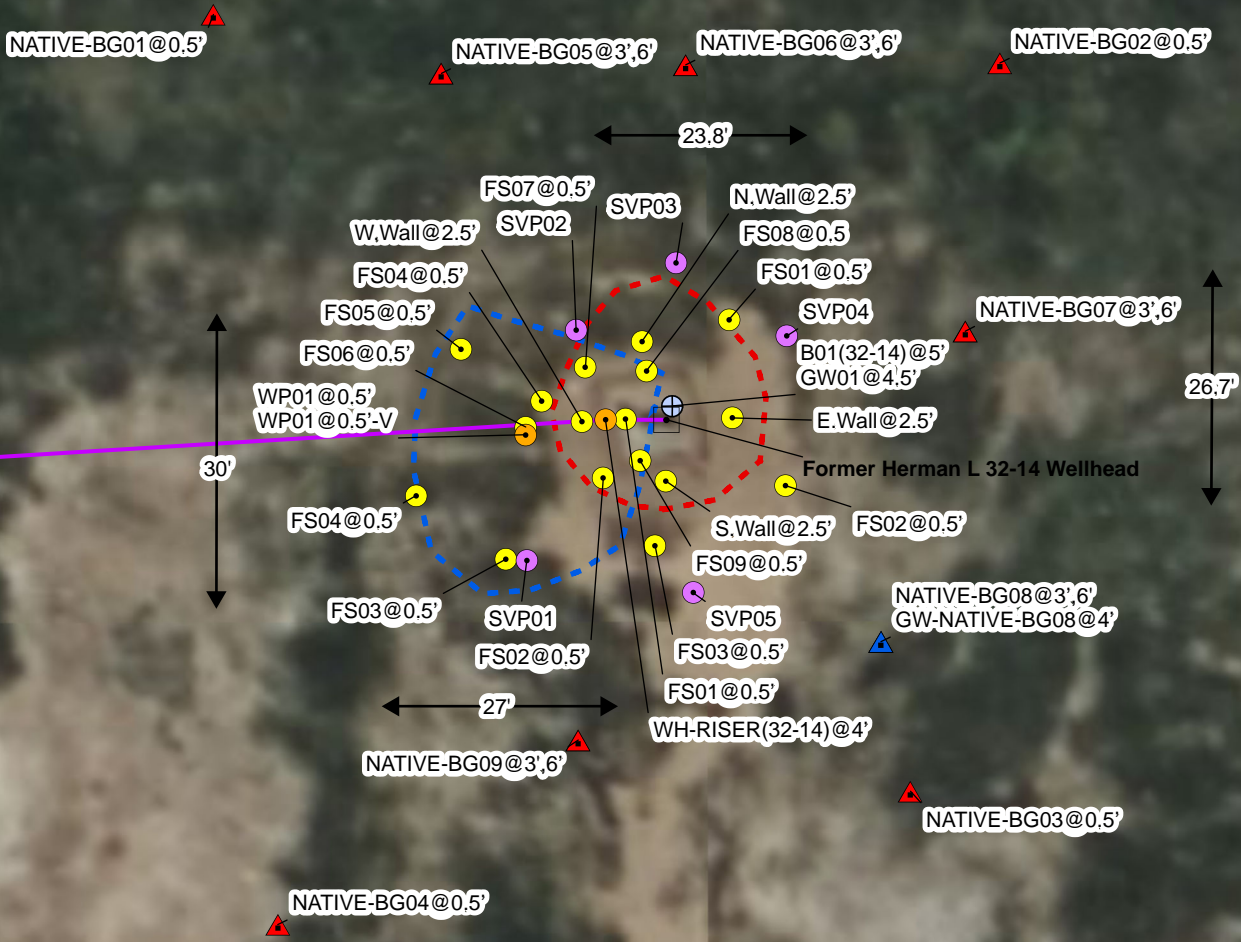


# Legend

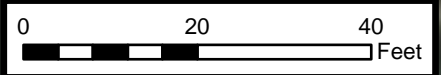
- P&A'd Wellhead
- Groundwater Sample
- Soil Sample
- Soil Screening
- Soil Vapor Point (SVP)
- Combined Background Soil and Groundwater Sample
- Background Soil Sample
- Approximate Location of Flowline (Removed)
- Excavation Extent
- Release Extent



Agriculture



Default Folder: C:\Users\Margan Tai\OneDrive - ENSOLUM, LLC\Ensolium GIS\0 - Projects\Kerr-McGee Oil & Gas Onshore, LP\09A14171096 - Herman L 32-14 Wellhead



Sources: Environmental Systems Research Institute (ESRI)

## Wellhead Excavation Site Map

Herman L 32-14 Wellhead  
 Kerr-McGee Oil & Gas Onshore, LP  
 SESW SEC 32-T3N-R66W  
 Weld County, CO

Project Number: 09A14171096

FIGURE

1

