

# Legend

- Soil Sample
- Soil Screening
- ▲ Background Soil Sample
- M Meter House
- ▶ Former Drain Line
- Former Drip Containment
- - -▶ Former Gas Line
- Metal Berm
- Former Infrastructure
- Tank Battery Liner Excavation
- Excavation Extent

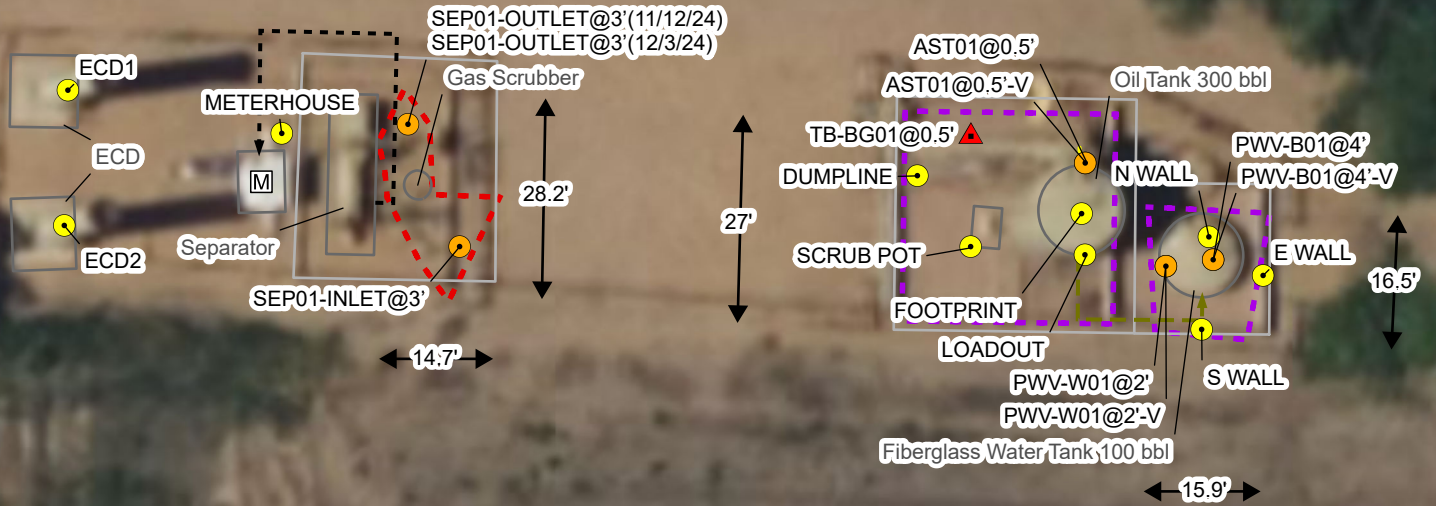
Notes  
 BBL: Barrel  
 AST: Above Ground Storage Tank  
 PWV: Produced Water Vessel  
 ECD: Emission Control Device

South Platte River



Rangeland

Access Road



Sources: Environmental Systems Research Institute (ESRI)

## Excavation Site Map

Windell1-13&4&5-18 Facility  
 Kerr-McGee Oil & Gas Onshore, LP  
 NWNW SEC 18-T2N-R66W  
 Weld County, CO

Project Number: 09A1417933

FIGURE

1

