

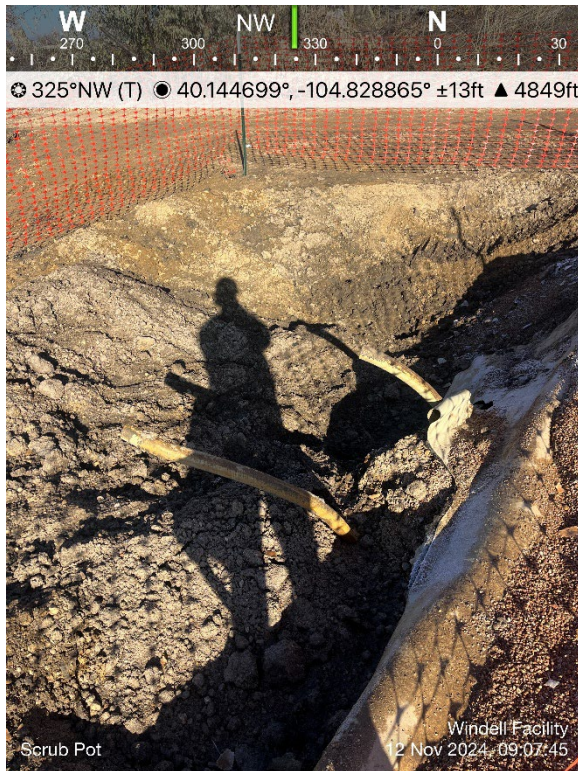
**PHOTO LOG**  
**WINDELL1-13&4&5-18 FACILITY**  
**WELD COUNTY, COLORADO**  
**KERR-MCGEE OIL & GAS ONSHORE, LP**



PWV Excavation



AST Tank Bottom



Scrub Pot Screening Location



AST Footprint

**PHOTO LOG**  
**WINDELL1-13&4&5-18 FACILITY**  
**WELD COUNTY, COLORADO**  
**KERR-MCGEE OIL & GAS ONSHORE, LP**



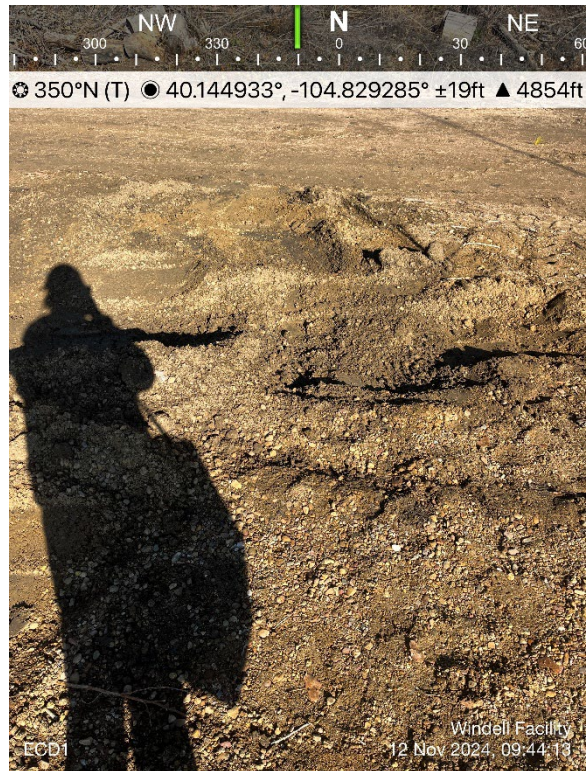
Dumpline Screening Location



Separator Inlet Sample Location



Separator Outlet Sample Location



ECD Screening Location 01

**PHOTO LOG**  
**WINDELL1-13&4&5-18 FACILITY**  
**WELD COUNTY, COLORADO**  
**KERR-MCGEE OIL & GAS ONSHORE, LP**



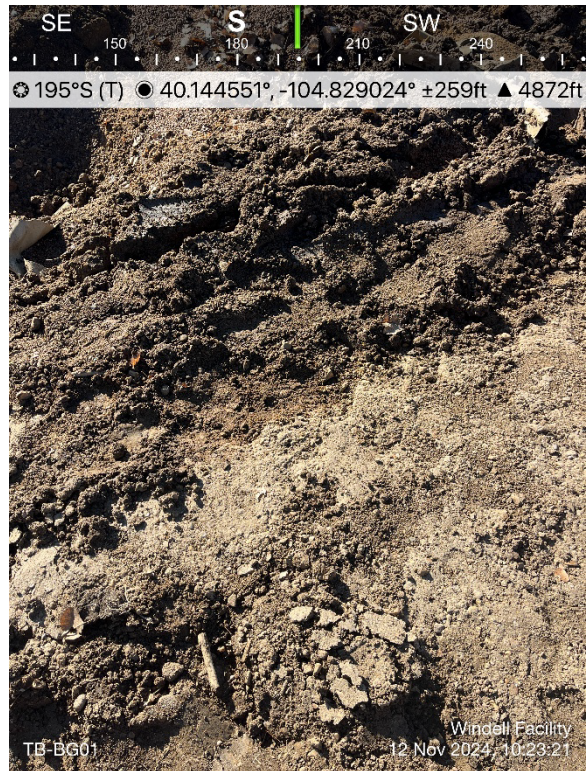
ECD Screening Location 02



Meter House Screening Location



PWV Below Liner

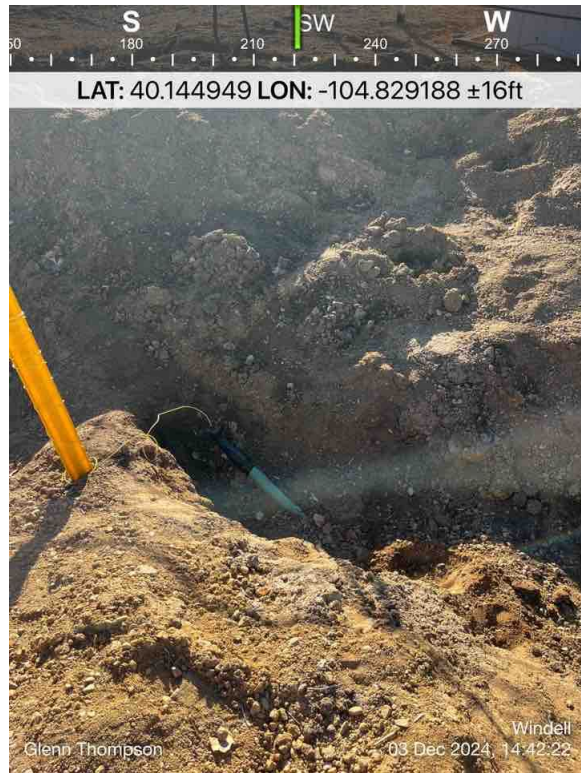


Tank Battery Background Sample Location

PHOTO LOG  
WINDELL1-13&4&5-18 FACILITY  
WELD COUNTY, COLORADO  
KERR-MCGEE OIL & GAS ONSHORE, LP



AST Below Liner



Separator Outlet Sample Location