

TABLE 1
FIELD DATA SUMMARY TABLE
NOBLE 100322
DEGENHART USX AE 66N62W 17NWNW, WELD COUNTY, COLORADO
REM # 30318

Sample ID	Sample Date	Depth (ft)	GPS Data Latitude/Longitude		PDOP Value	VOC Concentration (ppm)
AST E CEN. SURF.	10/25/2023	Surface	40.4903270	-104.3524552	-	0.0
AST W CEN. SURF.	10/25/2023	Surface	40.4903187	-104.3525015	-	0.0
(Separator) Surface	10/25/2023	Surface	40.4903492	-104.3521540	-	0.0
(Meter Shed) Surface	10/25/2023	Surface	40.4903692	-104.3522021	-	0.0
(Flare) Surface	10/25/2023	Surface	40.4903184	-104.3520586	-	0.0
E LOADOUT	10/25/2023	Surface	40.4903483	-104.3524565	-	0.0
W LOADOUT	10/25/2023	Surface	40.4903471	-104.3525026	-	0.0
E01-2.0	1/29/2025	2.0Ft	40.4903154	-104.3524758	0.9	0.0
N01-2.0	1/29/2025	2.0Ft	40.4903330	-104.3525021	1.0	0.0
S01-2.0	1/29/2025	2.0Ft	40.4903021	-104.3525000	0.9	0.0
W01-2.0	1/29/2025	2.0Ft	40.4903160	-104.3525249	0.9	0.0
DL RISER 3FT	10/25/2023	3.0 Ft	40.4903489	-104.3521846	-	0.0
FL SEP. RISER 3FT	10/25/2023	3.0 Ft	40.4903614	-104.3521312	-	0.0
(PWV) N Wall 3FT	10/25/2023	3.0 Ft	40.4903411	-104.3524079	-	0.0
(PWV) S Wall 3FT	10/25/2023	3.0 Ft	40.4903040	-104.3524048	-	0.0
(PWV) E Wall 3FT	10/25/2023	3.0 Ft	40.4903191	-104.3523828	-	0.0
(PWV) W Wall 3FT	10/25/2023	3.0 Ft	40.4903198	-104.3524301	-	0.0
B01-3.0	1/29/2025	3.0Ft	40.4903162	-104.3524999	0.9	0.0
PWV FLOOR 4FT	10/25/2023	4.0 Ft	40.4903226	-104.3524073	-	0.0

TABLE 1
FIELD DATA SUMMARY TABLE
NOBLE 100322
DEGENHART USX AE 66N62W 17NWNW, WELD COUNTY, COLORADO
REM # 30318

Sample ID	Sample Date	Depth (ft)	GPS Data Latitude/Longitude		PDOP Value	VOC Concentration (ppm)
BKG01	10/26/2023	Surface, 3.0 Ft, 4.0Ft	40.4910481	-104.3515034	-	0.0
BKG02	10/26/2023	Surface, 3.0 Ft, 4.0Ft	40.4909012	-104.3532897	-	0.0
BKG03	10/26/2023	Surface, 3.0 Ft, 4.0Ft	40.4899711	-104.3522597	-	0.0
BKG04	10/26/2023	Surface, 3.0 Ft, 4.0Ft	40.4924352	-104.3548078	-	0.0
BKG05	10/26/2023	Surface, 3.0 Ft, 4.0Ft	40.4882575	-104.3493361	-	0.0

1. Global Positioning System (GPS) data is provided in decimal degrees using North American Datum (NAD) 83 UTMZone 13 North.

2. Volatile organic compound (VOC) concentrations are measured in the field using a photoionization detector (PID).

PDOP = Position Dilution of Precision

ppm = Parts per million

in. = Inches

ft. = Feet

bgs = Below ground surface

Material excavated and transported off site for disposal.

TABLE 2
SUMMARY OF VOLATILE ORGANIC SOIL CHEMISTRY DATA
NOBLE 100322
DEGENHART USX AE 66N62W 17NWNW, WELD COUNTY, COLORADO
REM # 30318

Sample ID	Sample Date	Depth (ft)	Benzene (mg/kg)	Toluene (mg/kg)	Ethyl-Benzene (mg/kg)	Xylenes (mg/kg)	1,2,4-Trimethyl-Benzene (mg/kg)	1,3,5-Trimethyl-Benzene (mg/kg)	Naphthalene (mg/kg)	TPH (mg/kg)	TPH GRO (mg/kg)	TPH DRO (mg/kg)	TPH ORO (mg/kg)
ECMC Table 915-1 Limits (Residential SSL)			1.2	490	5.8	58	30	27	2	500	500**		
ECMC Table 915-1 Limits (Protection of Groundwater SSL)			0.0026	0.69	0.78	9.9	0.0081	0.0087	0.0038	500	500**		
AST E CEN. SURF.	10/25/2023	Surface	<0.0020	<0.0050	<0.0050	<0.010	<0.0050	<0.0050	<0.0038	<500	<0.50	<50	<50
AST W CEN. SURF.	10/25/2023	Surface	<0.0020	<0.0050	<0.0050	<0.010	<0.0050	<0.0050	<0.0038	<500	<0.50	<50	<50
DL RISER 3FT	10/25/2023	3.0 Ft	<0.0020	<0.0050	<0.0050	<0.010	<0.0050	<0.0050	<0.0038	<500	<0.50	<50	<50
FL SEP. RISER 3FT	10/25/2023	3.0 Ft	<0.0020	<0.0050	<0.0050	<0.010	<0.0050	<0.0050	<0.0038	<500	<0.50	<50	<50
PWV FLOOR 4FT	10/25/2023	4.0 Ft	<0.0020	<0.0050	<0.0050	<0.010	<0.0050	<0.0050	<0.0038	<500	<0.50	<50	<50
E01-2.0	1/29/2025	2.0Ft	<0.0020	<0.0050	<0.0050	<0.010	<0.0050	<0.0050	<0.0038	<500	<0.50	<50	<50
N01-2.0	1/29/2025	2.0Ft	<0.0020	<0.0050	<0.0050	<0.010	<0.0050	<0.0050	<0.0038	<500	<0.50	<50	<50
S01-2.0	1/29/2025	2.0Ft	<0.0020	<0.0050	<0.0050	<0.010	<0.0050	<0.0050	<0.0038	<500	<0.50	<50	<50
W01-2.0	1/29/2025	2.0Ft	<0.0020	<0.0050	<0.0050	<0.010	<0.0050	<0.0050	<0.0038	<500	<0.50	<50	<50
B01-3.0	1/29/2025	3.0Ft	<0.0020	<0.0050	<0.0050	<0.010	<0.0050	<0.0050	<0.0038	<500	<0.50	<50	<50

1. Bold values exceed the ECMC Table 915-1 limit(s)

2. Red & blue highlighted soil analytical values indicate an exceedance of the referenced soil screening level (SSL)

3. * Indicates laboratory minimum detection limit in excess of SSL

4. ** Summation of GRO+DRO+ORO must be less than 500 mg/kg

(<) = Analytical result is less than the indicated laboratory reporting limit.

TPH-GRO = Total petroleum hydrocarbons - gasoline range organics

TPH-DRO = Total petroleum hydrocarbons - diesel range organics

TPH-ORO = Total petroleum hydrocarbons - oil range organics

mg/kg = Milligrams per kilogram

ft. = Feet

bgs = Below ground surface

NA - Not analyzed

Material excavated and transported off site for disposal.

TABLE 3
SUMMARY OF POLYCYCLIC AROMATIC HYDROCARBON SOIL CHEMISTRY DATA
NOBLE 100322
DEGENHART USX AE 66N62W 17NWNW, WELD COUNTY, COLORADO
REM # 30318

Sample ID	Sample Date	Depth (ft)	Acenaphthene (mg/kg)	Anthracene (mg/kg)	Benzo (a) Anthracene (mg/kg)	Benzo (a) Pyrene (mg/kg)	Benzo (b) Fluoranthene (mg/kg)	Benzo (k) Fluoranthene (mg/kg)	Chrysene (mg/kg)	Dibenzo (a,h) Anthracene (mg/kg)	Fluoranthene (mg/kg)	Fluorene (mg/kg)	Indeno (1,2,3-cd) Pyrene (mg/kg)	Pyrene (mg/kg)	1-Methyl - Naphthalene (mg/kg)	2-Methyl- Naphthalene (mg/kg)
ECMC Table 915-1 Limits (Residential SSL)			360	1800	1.1	0.11	1.1	11	110	0.11	240	240	1.1	180	18	24
ECMC Table 915-1 Limits (Protection of Groundwater SSL)			0.55	5.8	0.011	0.24	0.3	2.9	9	0.096	8.9	0.54	0.98	1.3	0.006	0.019
AST E CEN. SURF.	10/25/2023	Surface	<0.00500	<0.00500	<0.00500	<0.00500	<0.00500	<0.00500	<0.00500	<0.00500	<0.00500	<0.00500	<0.00500	<0.00500	<0.00500	<0.00500
AST W CEN. SURF.	10/25/2023	Surface	<0.00500	<0.00500	<0.00500	<0.00500	<0.00500	<0.00500	<0.00500	<0.00500	<0.00500	0.00529	<0.00500	<0.00500	0.0332	0.0342
DL RISER 3FT	10/25/2023	3.0 Ft	<0.00500	<0.00500	<0.00500	<0.00500	<0.00500	<0.00500	<0.00500	<0.00500	<0.00500	<0.00500	<0.00500	<0.00500	<0.00500	<0.00500
FL SEP. RISER 3FT	10/25/2023	3.0 Ft	<0.00500	<0.00500	<0.00500	<0.00500	<0.00500	<0.00500	<0.00500	<0.00500	<0.00500	<0.00500	<0.00500	<0.00500	<0.00500	<0.00500
PWV FLOOR 4FT	10/25/2023	4.0 Ft	<0.00500	<0.00500	<0.00500	<0.00500	<0.00500	<0.00500	<0.00500	<0.00500	<0.00500	<0.00500	<0.00500	<0.00500	<0.00500	<0.00500
E01-2.0	1/29/2025	2.0Ft	<0.00500	<0.00500	<0.00500	<0.00500	<0.00500	<0.00500	<0.00500	<0.00500	<0.00500	<0.00500	<0.00500	<0.00500	<0.00500	<0.00500
N01-2.0	1/29/2025	2.0Ft	<0.00500	<0.00500	<0.00500	<0.00500	<0.00500	<0.00500	<0.00500	<0.00500	<0.00500	<0.00500	<0.00500	<0.00500	<0.00500	<0.00500
S01-2.0	1/29/2025	2.0Ft	<0.00500	<0.00500	<0.00500	<0.00500	<0.00500	<0.00500	<0.00500	<0.00500	<0.00500	<0.00500	<0.00500	<0.00500	<0.00500	<0.00500
W01-2.0	1/29/2025	2.0Ft	<0.00500	<0.00500	<0.00500	<0.00500	<0.00500	<0.00500	<0.00500	<0.00500	<0.00500	<0.00500	<0.00500	<0.00500	<0.00500	<0.00500
B01-3.0	1/29/2025	3.0Ft	<0.00500	<0.00500	<0.00500	<0.00500	<0.00500	<0.00500	<0.00500	<0.00500	<0.00500	<0.00500	<0.00500	<0.00500	<0.00500	<0.00500

1. Bold values exceed the ECMC Table 915-1 limit(s)

2. Red & blue highlighted soil analytical values indicate an exceedance of the referenced soil screening level (SSL)

3. * Indicates laboratory minimum detection limit in excess of SSL

4. ** Summation of GRO+DRO+ORO must be less than 500 mg/kg

(<) = Analytical result is less than the indicated laboratory reporting limit.

TPH-GRO = Total petroleum hydrocarbons - gasoline range organics

TPH-DRO = Total petroleum hydrocarbons - diesel range organics

TPH-ORO = Total petroleum hydrocarbons - oil range organics

mg/kg = Milligrams per kilogram

ft. = Feet

bgs = Below ground surface

NA - Not analyzed

Material excavated and transported off site for disposal.

TABLE 4
SUMMARY OF SOIL SUITABILITY FOR RECLAMATION
NOBLE 100322
DEGENHART USX AE 66N62W 17NWNW, WELD COUNTY, COLORADO
REM # 30318

Sample ID	Sample Date	Depth (ft)	pH (Standard Units)	EC (mmhos/cm)	SAR (Standard Units)	Boron (mg/L)
ECMC Table 915-1 Soil Suitability Limits			6 - 8.3	<4	<6	2
AST E CEN. SURF.	10/25/2023	Surface	7.75	0.185	0.111	<2.00
AST W CEN. SURF.	10/25/2023	Surface	6.99	0.226	0.304	<2.00
DL RISER 3FT	10/25/2023	3.0 Ft	8.65	0.206	0.879	<2.00
FL SEP. RISER 3FT	10/25/2023	3.0 Ft	8.34	0.124	0.0413	<2.00
PWV FLOOR 4FT	10/25/2023	4.0 Ft	8.3	0.121	0.0327	<2.00
E01-2.0	1/29/2025	2.0Ft	8.49	0.17	0.566	<2.00
N01-2.0	1/29/2025	2.0Ft	8.26	0.298	1.45	<2.00
S01-2.0	1/29/2025	2.0Ft	8.67	0.0958	0.0248	<2.00
W01-2.0	1/29/2025	2.0Ft	8.46	0.172	0.412	<2.00
B01-3.0	1/29/2025	3.0Ft	8.59	0.109	0.106	<2.00
BKG-1 Surface	10/26/2023	Surface	7.94	0.88	2.22	<2.00
BKG-2 Surface	10/26/2023	Surface	8.62	0.12	0.0527	<2.00
BKG-3 Surface	10/26/2023	Surface	8.39	0.348	0.814	<2.00
BKG-4 Surface	10/26/2023	Surface	8.24	0.394	0.47	<2.00
BKG-5 Surface	10/26/2023	Surface	8.15	0.318	0.488	<2.00
BKG-1 3FT	10/26/2023	3.0 Ft	8.02	0.248	0.0715	<2.00
BKG-2 3FT	10/26/2023	3.0 Ft	5.06	0.105	0.0465	<2.00
BKG-3 3FT	10/26/2023	3.0 Ft	8.55	0.161	0.0489	<2.00
BKG-4 3FT	10/26/2023	3.0 Ft	8.58	0.169	0.178	<2.00
BKG-5 3FT	10/26/2023	3.0 Ft	7.75	1.51	0.94	<2.00

TABLE 4
SUMMARY OF SOIL SUITABILITY FOR RECLAMATION
NOBLE 100322
DEGENHART USX AE 66N62W 17NWNW, WELD COUNTY, COLORADO
REM # 30318

Sample ID	Sample Date	Depth (ft)	pH (Standard Units)	EC (mmhos/cm)	SAR (Standard Units)	Boron (mg/L)
ECMC Table 915-1 Soil Suitability Limits			6 - 8.3	<4	<6	2
BKG-1 4FT	10/26/2023	4.0 Ft	8.55	0.136	0.0473	<2.00
BKG-2 4FT	10/26/2023	4.0 Ft	7.24	0.428	0.123	<2.00
BKG-3 4FT	10/26/2023	4.0 Ft	8	0.524	0.44	<2.00
BKG-4 4FT	10/26/2023	4.0 Ft	7.75	0.108	0.0567	<2.00
BKG-5 4FT	10/26/2023	4.0 Ft	7.76	0.116	0.046	<2.00
Maximum Background Concentration			8.62	1.51	2.22	<2.00

1. **Bold** faced values exceed the ECMC Table 915-1 limit(s), but are within background concentrations.
2. **Bold** faced values exceed the ECMC Table 915-1 limit(s) and native background concentrations.
3. Brown highlighted soil analytical values indicate a regulatory exceedance.

NA - Not analyzed/Not applicable

TABLE 5
SUMMARY OF METALS IN SOIL CHEMISTRY DATA
NOBLE 100322
DEGENHART USX AE 66N62W 17NWNW, WELD COUNTY, COLORADO
REM # 30318

Sample ID	Sample Date	Depth (ft)	Arsenic (mg/kg)	Barium (mg/kg)	Cadmium (mg/kg)	Chromium (VI) (mg/kg)	Copper (mg/kg)	Lead (mg/kg)	Nickel (mg/kg)	Selenium (mg/kg)	Silver (mg/kg)	Zinc (mg/kg)
ECMC Table 915-1 Limits (Residential SSL)			0.68	15000	71	0.3	3100	400	1500	390	390	23000
ECMC Table 915-1 Limits (Protection of Groundwater SSL)			0.29	82	0.38	0.00067	46	14	26	0.26	0.8	370
AST E CEN. SURF.	10/25/2023	Surface	0.824	29.8	<0.200	<0.30	1.77	3.47	1.02	<0.260	<0.0200	6.16
AST W CEN. SURF.	10/25/2023	Surface	0.693	25.3	<0.200	<0.30	1.46	1.83	0.979	<0.260	<0.0200	3.76
DL RISER 3FT	10/25/2023	3	0.771	64.4	<0.200	<0.30	1.3	4.51	1.36	<0.260	<0.0200	4.99
FL SEP. RISER 3FT	10/25/2023	3	1.33	90	<0.200	<0.30	3.85	9.73	2.11	0.26	0.0298	7.65
PWV FLOOR 4FT	10/25/2023	4	1.5	123	<0.200	<0.30	1.66	5.56	1.72	<0.260	<0.0200	6.08
E01-2.0	1/29/2025	2	2.67	84.7	<0.200	<0.30	4.38	5.64	4.72	<0.260	0.0211	16.4
N01-2.0	1/29/2025	2	2.41	57.6	<0.200	<0.30	5.38	6.27	4.44	<0.260	0.0449	18.2
S01-2.0	1/29/2025	2	3.07	64.5	<0.200	<0.30	3.19	5.3	3.99	<0.260	0.0229	14.4
W01-2.0	1/29/2025	2	2.85	72.4	0.204	<0.30	5	7.07	4.25	<0.260	0.0474	18.5
B01-3.0	1/29/2025	3	2.39	64.2	<0.200	<0.30	2.86	3.95	3.19	<0.260	<0.0200	10.4
BKG-1 Surface	10/26/2023	Surface	0.916	49	<0.200	<0.30	1.75	5.43	1.31	<0.260	<0.0200	4.77
BKG-2 Surface	10/26/2023	Surface	1.62	66.7	<0.200	<0.30	2.53	4.2	1.73	<0.260	<0.0200	5.65
BKG-3 Surface	10/26/2023	Surface	1.2	52.3	<0.200	<0.30	1.28	5.03	1.36	<0.260	<0.0200	4.74
BKG-4 Surface	10/26/2023	Surface	1.31	114	<0.200	<0.30	1.86	5.41	2.35	<0.260	<0.0200	5.55
BKG-5 Surface	10/26/2023	Surface	1.02	36.8	<0.200	<0.30	1.33	5.14	1.31	<0.260	<0.0200	4.67
BKG-1 3FT	10/26/2023	3	0.967	50.8	<0.200	<0.30	1.48	3.43	1.47	<0.260	<0.0200	5.15
BKG-2 3FT	10/26/2023	3	0.974	35.4	<0.200	<0.30	1.21	4.81	1.12	<0.260	<0.0200	5.12
BKG-3 3FT	10/26/2023	3	1.5	170	0.217	<0.30	1.23	4.21	2.02	<0.260	0.0257	4.61
BKG-4 3FT	10/26/2023	3	0.898	150	<0.200	<0.30	1.36	4.94	1.75	<0.260	0.0276	5.53
BKG-5 3FT	10/26/2023	3	1.13	62	<0.200	<0.30	1.98	11.2	1.51	<0.260	<0.0200	5.53

TABLE 5
SUMMARY OF METALS IN SOIL CHEMISTRY DATA
NOBLE 100322
DEGENHART USX AE 66N62W 17NWNW, WELD COUNTY, COLORADO
REM # 30318

Sample ID	Sample Date	Depth (ft)	Arsenic (mg/kg)	Barium (mg/kg)	Cadmium (mg/kg)	Chromium (VI) (mg/kg)	Copper (mg/kg)	Lead (mg/kg)	Nickel (mg/kg)	Selenium (mg/kg)	Silver (mg/kg)	Zinc (mg/kg)
ECMC Table 915-1 Limits (Residential SSL)			0.68	15000	71	0.3	3100	400	1500	390	390	23000
ECMC Table 915-1 Limits (Protection of Groundwater SSL)			0.29	82	0.38	0.00067	46	14	26	0.26	0.8	370
BKG-1 4FT	10/26/2023	4	0.839	48.6	<0.200	<0.30	1.43	3.74	1.16	<0.260	<0.0200	4.18
BKG-2 4FT	10/26/2023	4	0.993	48.7	<0.200	<0.30	1.21	4.32	1.44	<0.260	<0.0200	4.85
BKG-3 4FT	10/26/2023	4	1.3	70.1	<0.200	<0.30	1.79	6.01	1.82	<0.260	<0.0200	6.11
BKG-4 4FT	10/26/2023	4	0.69	29.1	<0.200	<0.30	0.816	2.64	1.14	<0.260	<0.0200	3.96
BKG-5 4FT	10/26/2023	4	0.643	25.2	<0.200	<0.30	0.775	2.28	1.06	<0.260	<0.0200	3.72
1.25x Maximum Background Concentration X Ft			2.025	212.5	0.27125	0.375	3.1625	14	2.9375	0.325	0.0345	7.6375

- Bold** faced values exceed the ECMC Table 915-1 limit(s), but are within 1.25x background concentrations.
- Red** faced values exceed the ECMC Table 915-1 limit(s) and native background concentrations.
- Red & blue highlighted soil analytical values indicate an exceedance of the referenced soil screening level (SSL).
- Non-detect background results accounted for in the highest background concentration by using the reporting limit.

ECMC = Energy & Carbon Management Commission

(<) = Analytical result is less than the indicated laboratory reporting limit.

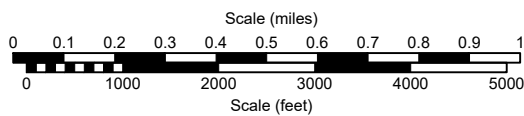
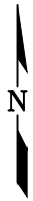
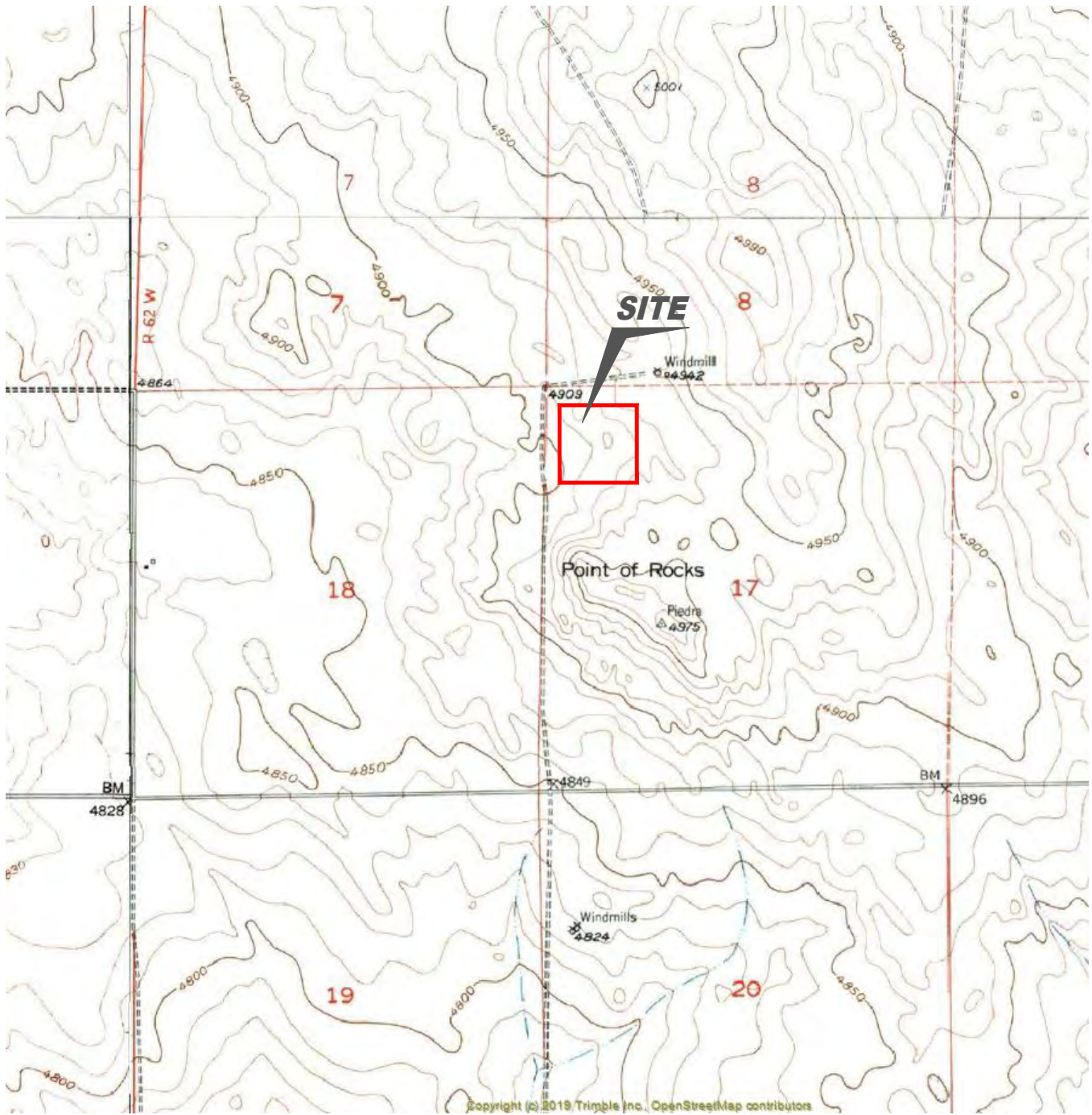
mg/kg = Milligrams per kilogram

ft. = Feet

bgs = Below ground surface

* Indicates laboratory minimum detection limit in excess of SSL

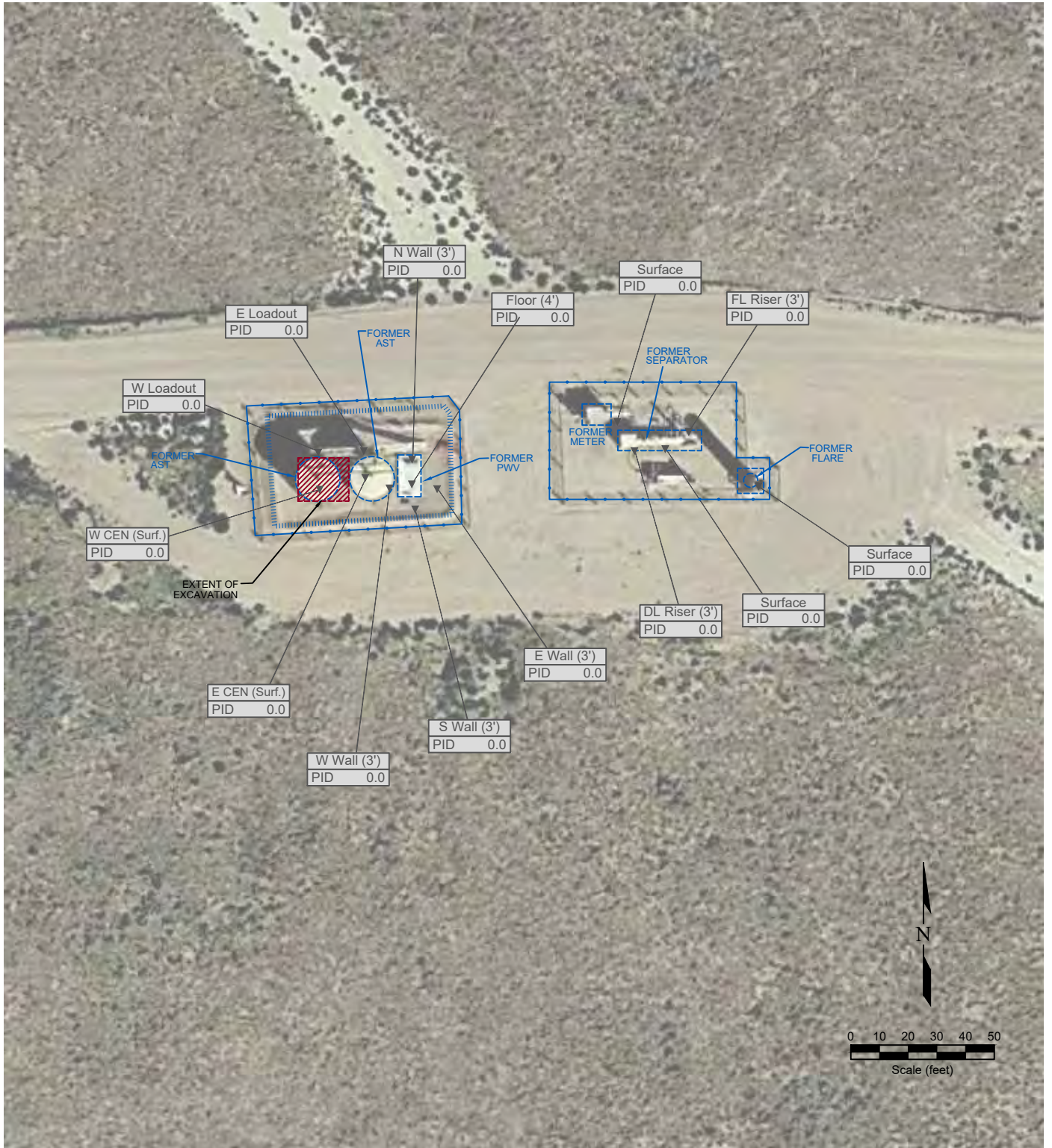
NA - Not analyzed/Not applicable



USGS 7.5 MINUTE SERIES (TOPOGRAPHIC)

Figure 1
SITE LOCATION MAP
Noble Energy, Inc.
Degenhart USX AE-66N-62W 17NWNW
NWNW Section 17, T6N, R62W, 6th PM
Weld County, Colorado
40.4903187°, -104.3525015°

Project No. C023-273	API #	Facility # 310864	
Date 6/10/25	Remediation # 30318	Filename 23273T	



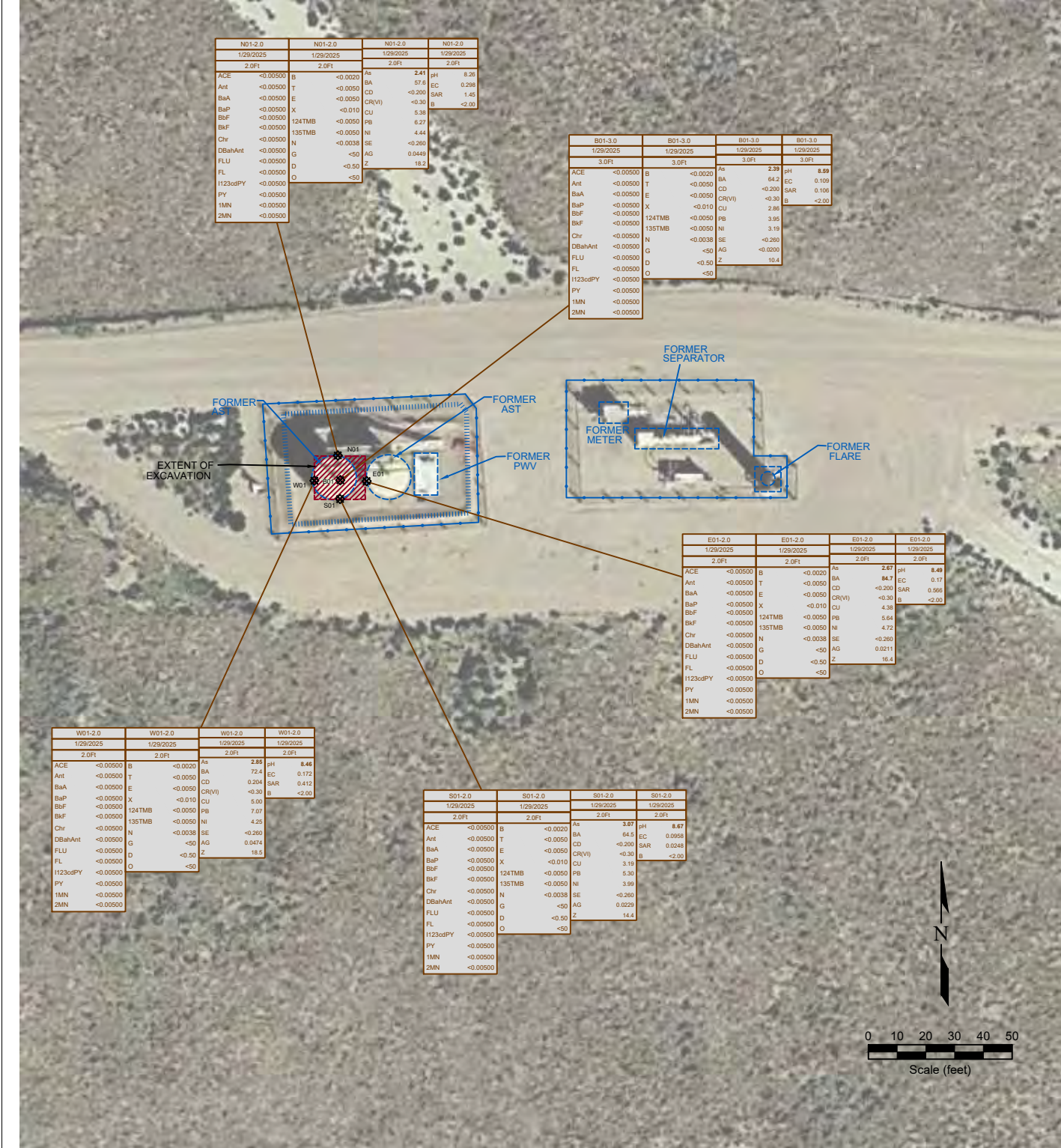
LEGEND

- WELL HEAD LOCATION
- ABOVE GROUND STORAGE TANK
- ▲ PIB READING LOCATION
- FORMER FACILITY
- AREA OF EXCAVATION
- EXTENT OF EXCAVATION
- FENCE LINE
- CONTAINMENT BERM
- CONTAINMENT WALL

Figure 2
SITE MAP
Noble Energy, Inc.
Degenhart USX AE-66N-62W 17NWNW
 NWNW Section 17, T6N, R62W, 6th PM
 Weld County, Colorado
 40.4903187°, -104.3525015°

Project No. C023-273	API #	Facility # 310864
Date 6/10/25	Remediation # 30318	Filename 23273Q1

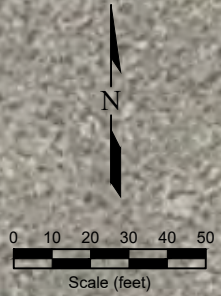




E01-2.0 1/29/2025		E01-2.0 1/29/2025		E01-2.0 1/29/2025		E01-2.0 1/29/2025	
2.0Ft		2.0Ft		2.0Ft		2.0Ft	
ACE	<0.00500	B	<0.0020	As	2.67	pH	8.48
Ant	<0.00500	T	<0.0050	BA	84.7	EC	0.117
BaA	<0.00500	E	<0.0050	CD	<0.200	SAR	0.966
BaP	<0.00500	X	<0.010	CR(VI)	<0.30	B	<2.00
BbF	<0.00500	124TMB	<0.0050	CU	4.38		
BkF	<0.00500	135TMB	<0.0050	Pb	5.64		
Chr	<0.00500	N	<0.0038	SE	4.72		
DBahAnt	<0.00500	G	<0.50	AG	<0.260		
FLU	<0.00500	D	<0.50	Z	0.0211		
FL	<0.00500	O	<0.50		16.4		
H23cdPY	<0.00500						
PY	<0.00500						
1MN	<0.00500						
2MN	<0.00500						

W01-2.0 1/29/2025		W01-2.0 1/29/2025		W01-2.0 1/29/2025		W01-2.0 1/29/2025	
2.0Ft		2.0Ft		2.0Ft		2.0Ft	
ACE	<0.00500	B	<0.0020	As	2.88	pH	8.46
Ant	<0.00500	T	<0.0050	BA	72.4	EC	0.172
BaA	<0.00500	E	<0.0050	CD	0.204	SAR	0.412
BaP	<0.00500	X	<0.010	CR(VI)	<0.30	B	<2.00
BbF	<0.00500	124TMB	<0.0050	CU	5.00		
BkF	<0.00500	135TMB	<0.0050	Pb	7.07		
Chr	<0.00500	N	<0.0038	SE	4.25		
DBahAnt	<0.00500	G	<0.50	AG	0.0474		
FLU	<0.00500	D	<0.50	Z	18.5		
FL	<0.00500	O	<0.50				
H23cdPY	<0.00500						
PY	<0.00500						
1MN	<0.00500						
2MN	<0.00500						

S01-2.0 1/29/2025		S01-2.0 1/29/2025		S01-2.0 1/29/2025		S01-2.0 1/29/2025	
2.0Ft		2.0Ft		2.0Ft		2.0Ft	
ACE	<0.00500	B	<0.0020	As	3.67	pH	8.67
Ant	<0.00500	T	<0.0050	BA	64.5	EC	0.0958
BaA	<0.00500	E	<0.0050	CD	<0.200	SAR	0.0248
BaP	<0.00500	X	<0.010	CR(VI)	<0.30	B	<2.00
BbF	<0.00500	124TMB	<0.0050	CU	3.19		
BkF	<0.00500	135TMB	<0.0050	Pb	5.30		
Chr	<0.00500	N	<0.0038	SE	3.99		
DBahAnt	<0.00500	G	<0.50	AG	<0.260		
FLU	<0.00500	D	<0.50	Z	0.0229		
FL	<0.00500	O	<0.50		14.4		
H23cdPY	<0.00500						
PY	<0.00500						
1MN	<0.00500						
2MN	<0.00500						



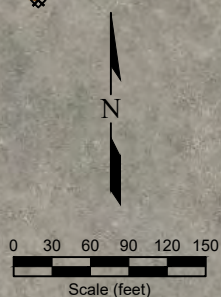
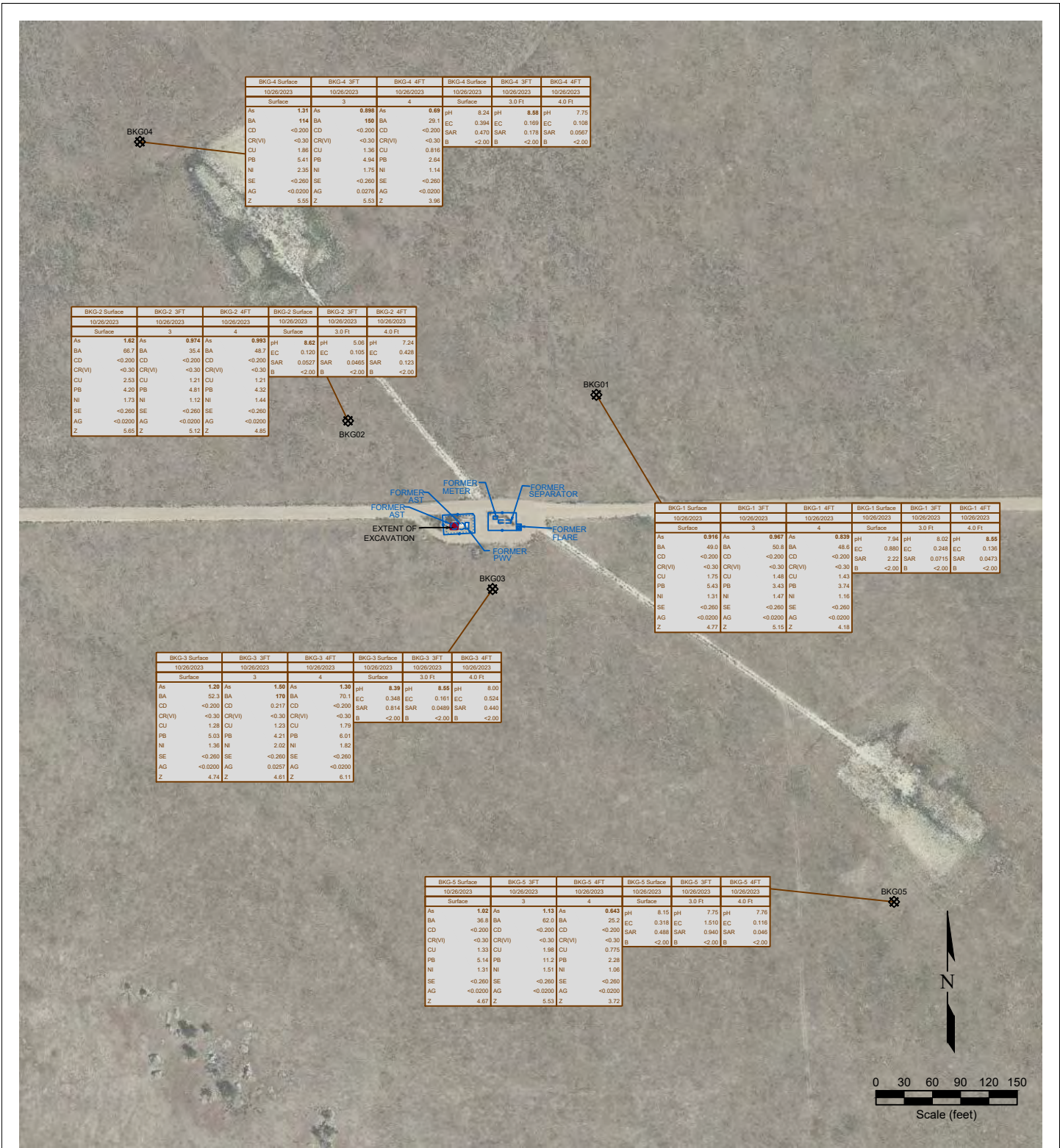
LEGEND

- WELL HEAD LOCATION
- ABOVE GROUND STORAGE TANK
- FORMER FACILITY
- EXTENT OF EXCAVATION
- ⊗ SOIL SAMPLE LOCATION
- FENCE LINE
- ▨ AREA OF EXCAVATION
- ▤ CONTAINMENT BERM
- ▥ CONTAINMENT WALL
- NS NOT ANALYZED

SAMPLE ID	SAMPLE DATE	SAMPLE ID	SAMPLE DATE	SAMPLE ID	SAMPLE DATE	SAMPLE ID	SAMPLE DATE
ACE	<0.00500	As	<0.0020	As	<0.0020	As	<0.0020
Ant	<0.00500	BA	<0.0050	BA	<0.0050	BA	<0.0050
BaA	<0.00500	CD	<0.200	CD	<0.200	CD	<0.200
BaP	<0.00500	CR(VI)	<0.30	CR(VI)	<0.30	CR(VI)	<0.30
BbF	<0.00500	CU	5.00	CU	5.00	CU	5.00
BkF	<0.00500	Pb	7.07	Pb	7.07	Pb	7.07
Chr	<0.00500	SE	4.25	SE	4.25	SE	4.25
DBahAnt	<0.00500	AG	0.0474	AG	0.0474	AG	0.0474
FLU	<0.00500	Z	18.5	Z	18.5	Z	18.5
FL	<0.00500						
H23cdPY	<0.00500						
PY	<0.00500						
1MN	<0.00500						
2MN	<0.00500						

Figure 3
SOIL CHEMISTRY MAP
Noble Energy, Inc.
Degenhart USX AE-66N-62W 17NWNW
NWNW Section 17, T6N, R62W, 6th PM
Weld County, Colorado
40.4903187°, -104.3525015°

Project No. C023-273	API #	Facility # 310864
Date 6/10/25	Remediation # 30318	Filename 23273Q1



LEGEND

- WELL HEAD LOCATION
- ⊗ SOIL SAMPLE LOCATION
- ABOVE GROUND STORAGE TANK
- FORMER FACILITY
- AREA OF EXCAVATION
- EXTENT OF EXCAVATION
- FENCE LINE
- CONTAINMENT BERM
- CONTAINMENT WALL

SAMPLE DATE	SAMPLE ID	DATE SAMPLED	DEPTH (ft)	SAMPLE ID	DATE SAMPLED	DEPTH (ft)	
As	<-0.01	ARSENIC (mg/kg)	As	<-0.01	ARSENIC (mg/kg)	As	<-0.01
BA	<-0.01	BARIIUM (mg/kg)	BA	<-0.01	BARIIUM (mg/kg)	BA	<-0.01
CD	<-0.01	CADMIUM (mg/kg)	CD	<-0.01	CADMIUM (mg/kg)	CD	<-0.01
CR(VI)	<-0.01	CHROMIUM (mg/kg)	CR(VI)	<-0.01	CHROMIUM (mg/kg)	CR(VI)	<-0.01
CU	<-0.01	COPPER (mg/kg)	CU	<-0.01	COPPER (mg/kg)	CU	<-0.01
PB	<-0.01	LEAD (mg/kg)	PB	<-0.01	LEAD (mg/kg)	PB	<-0.01
NI	<-0.01	NICKEL (mg/kg)	NI	<-0.01	NICKEL (mg/kg)	NI	<-0.01
SE	<-0.01	SELENIUM (mg/kg)	SE	<-0.01	SELENIUM (mg/kg)	SE	<-0.01
AG	<-0.01	SILVER (mg/kg)	AG	<-0.01	SILVER (mg/kg)	AG	<-0.01
Z	<-0.01	ZINC (mg/kg)	Z	<-0.01	ZINC (mg/kg)	Z	<-0.01

Figure 4
BACKGROUND SAMPLES SOIL CHEMISTRY MAP
Noble Energy, Inc.
Degenhart USX AE-66N-62W 17NWNW
NWNW Section 17, T6N, R62W, 6th PM
Weld County, Colorado
40.4903187°, -104.3525015°

Project No. C023-273	API #	Facility # 310864
Date 6/10/25	Remediation # 30318	Filename 23273QBKG



Description:

Degenhart 66N62W 17NWNW Excavation overview



Description:

Excavation overview



Description:

Completed excavation-no staining/odor



Description:

Completed excavation overview-no staining/odor