

Wiepking Fullerton Energy LLC
Ma State TB
Spill Event Remediation Plan of Action
06-16-2025

Location Details:

Operator Name: Wiepking Fullerton Energy LLC

Operator Number: 96340

Location Name: Ma State Tank Battery

Lat/Long: 39.162180, -103.619250

Remediation Project #: 33007

Summary:

Location is currently on quarterly reporting. The operator completed an additional location excavation and associated soil sampling on 06/12/2025.

2025 Q2 Update:

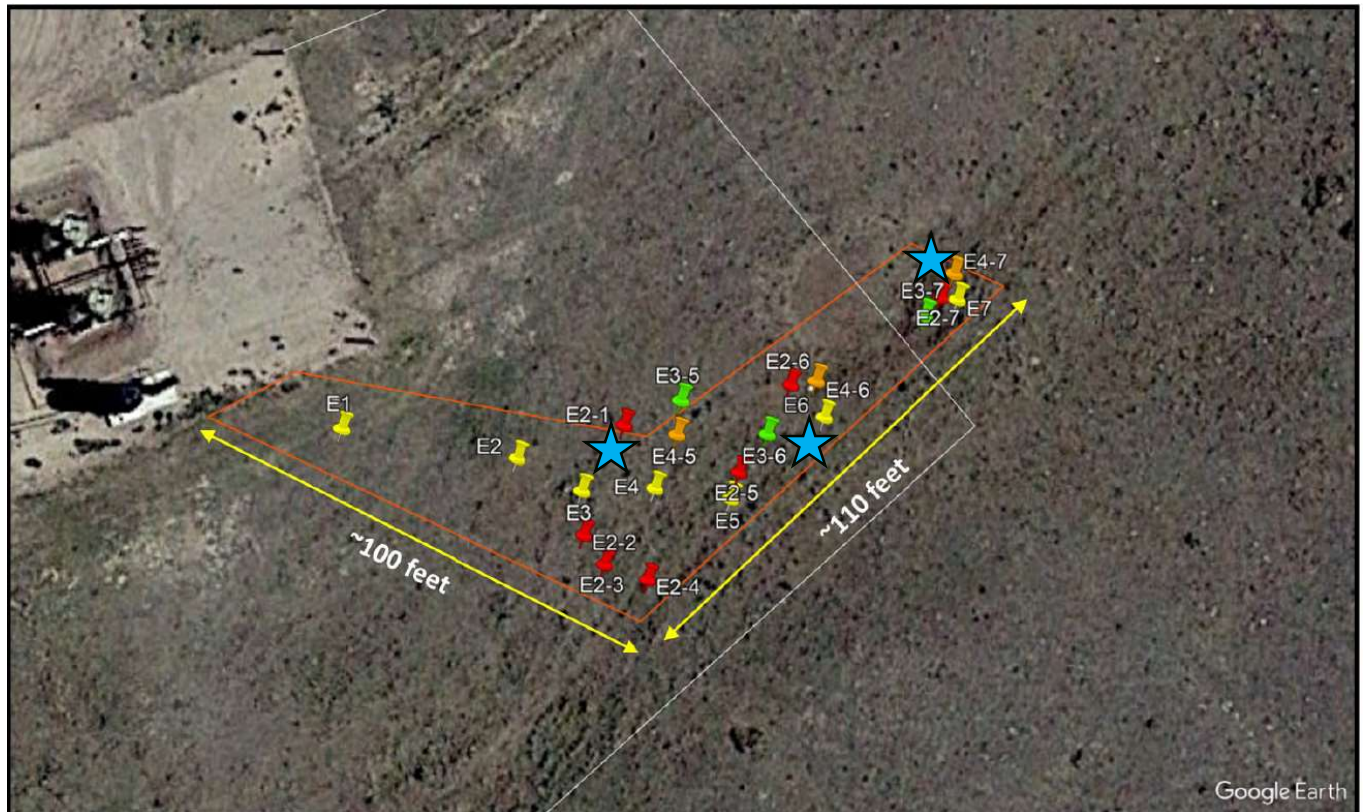
The WFE operations team continued to visit the location through the winter and early spring to evaluate the timing to do an additional excavation event. Excavation was delayed due to continued wet springtime conditions (Rain) to avoid causing excessive damage from equipment in the area.

On 06/12/2025, an excavation and sampling event was executed. The excavation area was aimed at where historical soil samples were still not within the ECMC table 915 standards. Soil samples were taken from the (3) locations that continued to show contamination. These samples were collected and sent to Origins lab in Denver, CO for analysis.

The operator will continue to monitor the location to limit any further damage during the coming months. Once the soil sample data has been returned, the operator will submit an analysis and forward plan, along with raw data from the laboratory on the update's samples.

06/12/2025 Excavation & Sampling:

On 6/12/2025 the operator hired third party contractors to perform an excavation and soil sampling event. The excavation occurred where areas of potential contamination were removed and piled on location. The areas targeted were determined based off historical contamination results from past sampling events. Once excavated (3) discreet soil samples were taken in-situ in the excavated areas based off the (3) historical areas of continued contamination. Once the samples were collected, they were taken to Origins lab in Denver, CO for analysis.



★ Excavation event # 5 sample locations

Once the sample results have been returned the operator will compile a report summary from its third-party engineers. The report will include a summary of the results and recommendations for the next steps. The operator will also submit the raw data report from the laboratory.