

DECOMMISSIONING REPORT
ERICKSON A 4-12 FLOWLINE
ECMC REMEDIATION # 33825

Prepared for:

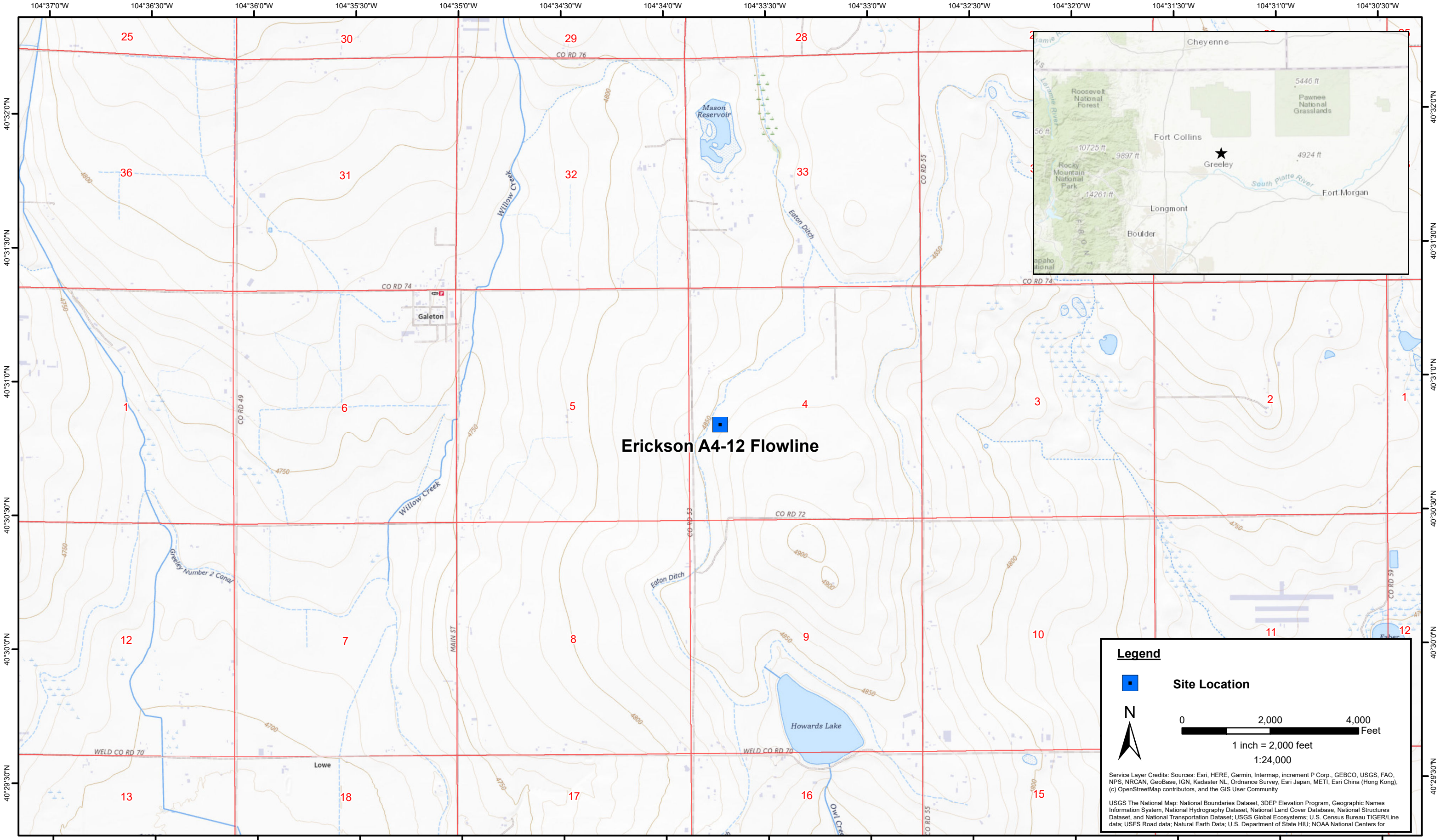


1099 18th Street
Suite 1500
Denver, CO 80202

Prepared by:



4725 Independence Street
Wheat Ridge, CO 80033



DATE:	May 2025
DESIGNED BY:	J. Whritenour
DRAWN BY:	L. Reed



Tasman, Inc.
4725 Independence St.
Wheat Ridge, CO 80033

Noble Energy, Inc. – 100322 – DJ Basin
Erickson A4-12 Flowline
NWSW, Section 4, Township 6 North, Range 64 West
Weld County, Colorado

Site Location Map

Figure
1

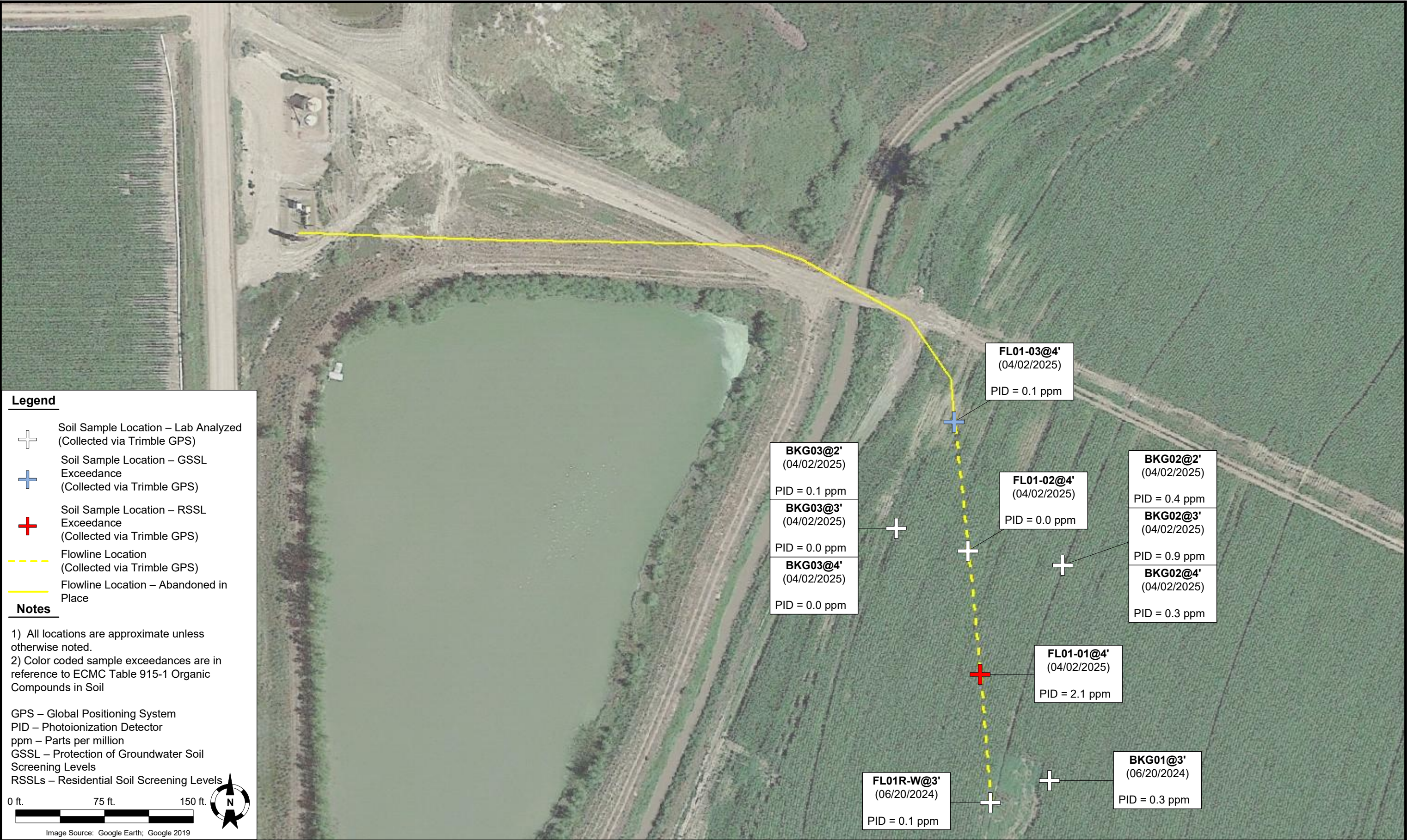


TABLE 1
FIELD DATA SUMMARY TABLE
NOBLE ENERGY, INC. - 100322
ERICKSON A 4-12 FLOWLINE, WELD COUNTY, COLORADO
REM # 33825

Sample ID	Sample Date	Depth (ft. bgs)	GPS Data Latitude/Longitude		PDOP Value	VOC Concentration (ppm)
FL01R-W@3'	6/20/2024	3	40.513378	-104.562129	1.0	0.1
FL01-01@4'	4/2/2025	4	40.513676	-104.562160	0.7	2.1
FL01-02@4'	4/2/2025	4	40.513960	-104.562194	0.7	0.0
FL01-03@4'	4/2/2025	4	40.514261	-104.562232	0.8	0.1
BKG01@3'	6/20/2024	3	40.513428	-104.561950	0.8	0.3
BKG02@2'	4/2/2025	2	40.513927	-104.561908	0.9	0.4
BKG02@3'	4/2/2025	3	40.513927	-104.561908	0.9	0.9
BKG02@4'	4/2/2025	4	40.513927	-104.561908	0.9	0.3
BKG03@2'	4/2/2025	2	40.514016	-104.562413	0.9	0.1
BKG03@3'	4/2/2025	3	40.514016	-104.562413	0.9	0.0
BKG03@4'	4/2/2025	4	40.514016	-104.562413	0.9	0.0

1. Global Positioning System (GPS) data is provided in decimal degrees using North American Datum (NAD) 83 UTMZone 13 North.

2. Volatile organic compound (VOC) concentrations are measured in the field using a photoionization detector (PID).

PDOP = Position Dilution of Precision

ppm = Parts per million

ft. = Feet

bgs = Below ground surface

TABLE 2
SUMMARY OF VOLATILE ORGANIC SOIL CHEMISTRY DATA
NOBLE ENERGY, INC. - 100322
ERICKSON A 4-12 FLOWLINE, WELD COUNTY, COLORADO
REM # 33825

Sample ID	Sample Date	Depth (ft. bgs)	Benzene (mg/kg)	Toluene (mg/kg)	Ethyl-Benzene (mg/kg)	Xylenes (mg/kg)	1,2,4- Trimethyl- Benzene (mg/kg)	1,3,5- Trimethyl- Benzene (mg/kg)	Naphthalene (mg/kg)	TPH (mg/kg)	TPH GRO (mg/kg)	TPH DRO (mg/kg)	TPH ORO (mg/kg)
ECMC Table 915-1 Limits (Residential SSL)			1.2	490	5.8	58	30	27	2	500	500**		
ECMC Table 915-1 Limits (Protection of Groundwater SSL)			0.0026	0.69	0.78	9.9	0.0081	0.0087	0.0038	500	500**		
FL01R-W@3'	6/20/2024	3	<0.0020	<0.0050	<0.0050	<0.010	<0.0050	<0.0050	<0.0038	<50	<0.50	<50	<50
FL01-01@4' ⁽⁴⁾	4/2/2025	4	<0.0020	<0.0050	<0.0050	<0.010	<0.0050	<0.0050	<0.0038	<50	<0.50	<50	<50
FL01-02@4' ⁽⁴⁾	4/2/2025	4	<0.0020	<0.0050	<0.0050	<0.010	<0.0050	<0.0050	<0.0038	<50	<0.50	<50	<50
FL01-03@4' ⁽⁴⁾	4/2/2025	4	<0.0020	<0.0050	<0.0050	<0.010	<0.0050	<0.0050	<0.0038	<50	<0.50	<50	<50

1. Bold values exceed the ECMC Table 915-1 limit(s)
 2. Red & blue highlighted soil analytical values indicate an exceedance of the referenced soil screening level (SSL)
 3. ** Summation of GRO+DRO+ORO must be less than 500 mg/kg
 4. Due to a laboratory error, the 8260B analysis was run out of hold time.
- (<) = Analytical result is less than the indicated laboratory reporting limit.
TPH-GRO = Total petroleum hydrocarbons - gasoline range organics
TPH-DRO = Total petroleum hydrocarbons - diesel range organics
TPH-ORO = Total petroleum hydrocarbons - oil range organics
mg/kg = Milligrams per kilogram
ft. = Feet
bgs = Below ground surface
NA - Not analyzed

TABLE 3
SUMMARY OF POLYCYCLIC AROMATIC HYDROCARBON SOIL CHEMISTRY DATA
NOBLE ENERGY, INC. - 100322
ERICKSON A 4-12 FLOWLINE, WELD COUNTY, COLORADO
REM # 33825

Sample ID	Sample Date	Depth (ft. bgs)	Acenaphthene (mg/kg)	Anthracene (mg/kg)	Benzo (a) Anthracene (mg/kg)	Benzo (a) Pyrene (mg/kg)	Benzo (b) Fluoranthene (mg/kg)	Benzo (k) Fluoranthene (mg/kg)	Chrysene (mg/kg)	Dibenzo (a,h) Anthracene (mg/kg)	Fluoranthene (mg/kg)	Fluorene (mg/kg)	Indeno (1,2,3- cd) Pyrene (mg/kg)	Pyrene (mg/kg)	1-Methyl - Naphthalene (mg/kg)	2-Methyl- Naphthalene (mg/kg)
ECMC Table 915-1 Limits (Residential SSL)			360	1800	1.1	0.11	1.1	11	110	0.11	240	240	1.1	180	18	24
ECMC Table 915-1 Limits (Protection of Groundwater SSL)			0.55	5.8	0.011	0.24	0.3	2.9	9	0.096	8.9	0.54	0.98	1.3	0.006	0.019
FL01R-W@3'	6/20/2024	3	<0.00500	<0.00500	<0.00500	<0.00500	<0.00500	<0.00500	<0.00500	<0.00500	<0.00500	<0.00500	<0.00500	<0.00500	<0.00500	<0.00500
FL01-01@4'	4/2/2025	4	0.129	0.158	0.180	0.147	0.204	0.0797	0.172	0.0263	0.272	0.160	0.144	0.222	0.0280	0.0553
FL01-02@4'	4/2/2025	4	<0.00500	<0.00500	<0.00500	<0.00500	<0.00500	<0.00500	<0.00500	<0.00500	0.0100	<0.00500	<0.00500	0.00775	<0.00500	<0.00500
FL01-03@4'	4/2/2025	4	0.00798	0.0136	0.0150	0.00908	0.0161	<0.00500	0.0142	<0.00500	0.0352	0.0105	0.00616	0.0261	<0.00500	<0.00500

1. Bold values exceed the ECMC Table 915-1 limit(s)
2. Red & blue highlighted soil analytical values indicate an exceedance of the referenced soil screening level (SSL)
(<) = Analytical result is less than the indicated laboratory reporting limit.
mg/kg = Milligrams per kilogram
ft. = Feet
bgs = Below ground surface
NA - Not analyzed

TABLE 4
SUMMARY OF SOIL SUITABILITY FOR RECLAMATION
NOBLE ENERGY, INC. - 100322
ERICKSON A 4-12 FLOWLINE, WELD COUNTY, COLORADO
REM # 33825

Sample ID	Sample Date	Depth (ft. bgs)	pH (Standard Units)	EC (mmhos/cm)	SAR (Standard Units)	Boron (mg/L)
ECMC Table 915-1 Soil Suitability Limits			6 - 8.3	<4	<6	2
FL01R-W@3'	6/20/2024	3	8.58	0.268	0.482	<2.00
FL01-01@4'	4/2/2025	4	8.23	1.30	2.22	<2.00
FL01-02@4'	4/2/2025	4	8.18	1.94	2.40	<2.00
FL01-03@4'	4/2/2025	4	8.21	1.55	2.19	<2.00
BKG01@3'	6/20/2024	3	8.36	0.719	2.19	<2.00
BKG02@2'	4/2/2025	2	8.19	1.57	1.99	<2.00
BKG02@3'	4/2/2025	3	8.60	0.688	1.10	<2.00
BKG02@4'	4/2/2025	4	8.54	0.742	0.990	<2.00
BKG03@2'	4/2/2025	2	8.43	0.576	1.57	<2.00
BKG03@3'	4/2/2025	3	8.34	2.01	2.16	<2.00
BKG03@4'	4/2/2025	4	8.42	1.75	2.67	<2.00
Maximum Background Concentration			8.60	-	-	-

1. **Bold** faced values exceed the ECMC Table 915-1 limit(s), but are within background concentrations.

2. **Bold** faced values exceed the ECMC Table 915-1 limit(s) and native background concentrations.

3. Brown highlighted soil analytical values indicate a regulatory exceedance.

mg/L = Milligrams per liter

ft. = Feet

bgs = Below ground surface

mmhos/cm = Millimohs per centimeter

NA - Not analyzed

TABLE 5
SUMMARY OF METALS IN SOIL CHEMISTRY DATA
NOBLE ENERGY, INC. - 100322
ERICKSON A 4-12 FLOWLINE, WELD COUNTY, COLORADO
REM # 33825

Sample ID	Sample Date	Depth (ft. bgs)	Arsenic (mg/kg)	Barium (mg/kg)	Cadmium (mg/kg)	Chromium (VI) (mg/kg)	Copper (mg/kg)	Lead (mg/kg)	Nickel (mg/kg)	Selenium (mg/kg)	Silver (mg/kg)	Zinc (mg/kg)
ECMC Table 915-1 Limits (Residential SSL)			0.68	15000	71	0.3	3100	400	1500	390	390	23000
ECMC Table 915-1 Limits (Protection of Groundwater SSL)			0.29	82	0.38	0.00067	46	14	26	0.26	0.8	370
FL01R-W@3'	6/20/2024	3	2.37	87.3	0.340	<0.30*	7.95	11.6	5.83	0.303	0.0312	28.2
FL01-01@4'	4/2/2025	4	2.06	59.7	<0.200	<0.30*	8.80	8.47	4.10	<0.260	<0.0200	22.2
FL01-02@4'	4/2/2025	4	2.94	111	<0.200	<0.30*	4.77	8.53	5.97	<0.260	<0.0200	30.1
FL01-03@4'	4/2/2025	4	3.22	74.7	<0.200	<0.30*	4.36	8.87	4.48	<0.260	<0.0200	28.3
BKG01@3'	6/20/2024	3	2.24	162	0.588	<0.30*	6.30	18.4	8.04	<0.260	0.0371	27.5
BKG02@2'	4/2/2025	2	2.54	126	0.268	<0.30*	8.71	8.64	9.13	<0.260	0.0377	32.5
BKG02@3'	4/2/2025	3	1.07	371	0.362	<0.30*	7.56	7.90	7.83	<0.260	0.0282	28.9
BKG02@4'	4/2/2025	4	1.13	322	0.307	<0.30*	6.66	7.59	6.99	<0.260	0.0239	26.8
BKG03@2'	4/2/2025	2	1.40	123	0.212	<0.30*	8.45	10.5	8.69	<0.260	0.0305	35.8
BKG03@3'	4/2/2025	3	2.03	85.1	<0.200	<0.30*	5.75	6.80	6.72	<0.260	0.0309	23.8
BKG03@4'	4/2/2025	4	3.16	92.6	<0.200	<0.30*	2.63	6.89	2.73	<0.260	<0.0200	15.6
1.25x Maximum Background Concentration			3.95	464	-	-	-	-	-	-	-	-

1. **Bold** faced values exceed the ECMC Table 915-1 limit(s), but are within 1.25x background concentrations.
 2. **Bold** faced values exceed the ECMC Table 915-1 limit(s) and native background concentrations.
 3. Red & blue highlighted soil analytical values indicate an exceedance of the referenced soil screening level (SSL).
 4. Non-detect background results accounted for in the highest background concentration by using the reporting limit.
 5. * Indicates laboratory minimum detection limit in excess of SSL
- ECMC = Energy & Carbon Management Commission
(<) = Analytical result is less than the indicated laboratory reporting limit.
mg/kg = Milligrams per kilogram
ft. = Feet
bgs = Below ground surface
NA - Not analyzed



CLIENT: Noble		SITE NAME: ERICKSON A04-12, 05-123-26531					DATE: 4/2/2025	REM. PROJECT #: 33825	WEATHER: 40s, sunny	
SITE DIRECTIONS: CR74/CR53 S 0.5 miles, E into site							JOB#:			
LEGALS AND LAT/LONG: 40.51473, -104.56421							TASMAN PERSONNEL: E Gooding-Lord			
SOIL TYPES: Well Graded Sand - SW							SURFACE GRADIENT: West			
SOIL SAMPLING							FACILITY INFRASTRUCTURE			
Date/Time	Soil Sample ID	PID (ppm)	Visual	Olfactory	Photo?	Grab or Lab Sample?	EQUIPMENT		Quantity	
							Above Ground Storage Tank (AST)			
04-02-2025 10:40	FL01-01@4'	2.1	No Staining	No Odor	Yes	Lab	Buried or Partially Buried Vessel			
04-02-2025 10:50	FL01-02@4'	0.0	No Staining	No Odor	Yes	Lab	Separator			
04-02-2025 11:10	FL01-03@4'	0.1	No Staining	No Odor	Yes	Lab	Emission Control Device (ECD)			
04-02-2025 11:20	BKG02@2'	0.4	No Staining	No Odor	Yes	Lab	Dump Line			
04-02-2025 11:25	BKG02@3'	0.9	No Staining	No Odor	Yes	Lab	Wellhead			
04-02-2025 11:30	BKG02@4'	0.3	No Staining	No Odor	Yes	Lab	Flowline			
04-02-2025 11:35	BKG03@2'	0.1	No Staining	No Odor	Yes	Lab	Other:			
04-02-2025 11:40	BKG03@3'	0.0	No Staining	No Odor	Yes	Lab	Soil Loads Removed			
04-02-2025 11:45	BKG03@4'	0.0	No Staining	No Odor	Yes	Lab	IMPACTED SOIL IDENTIFIED?			
							ESTIMATED VOLUME OF IMPACTS:			
							Date		Number	CY
									-	
							Total Removed		0	0
							Disposal Facility:			
							Groundwater Recovery			
							DATE GW ENCOUNTERED:		DEPTH:	
							GROUNDWATER IN CONTACT WITH IMPACTED SOIL?			
							LNAPL OR SHEEN OBSERVED ON GW?			
GROUNDWATER SAMPLING							Date		BBLs	
Date/Time	Groundwater Sample ID	Depth Collected	Turbid?	Sheen?	Odor?	Photo?				
							Total Removed		0	
							Disposal Facility:			

Chevron Rockies Business Unit

Field Qualitative Criteria for ECMC Reporting Associated with the Discovery of Potentially Impacted Material

If answered **Yes** to any of the questions listed below, this may suggest the presence of potentially impacted materials as outlined in ECMC Rule 912. Out of an abundance of caution, a “Yes” response will be reported to the ECMC within 24 hours after discovery, regardless of laboratory results. **Immediately notify the RBU Remediation Team.** Include a copy of this Field Qualitative Spill Criteria Checklist in the field Report.

Please answer the following questions when on-site:

1. Is there visible petroleum hydrocarbon staining in the soil? No
2. Does the soil sample from the stained area have a petroleum odor? No
3. Is there a petroleum hydrocarbon sheen on the nearby surface water? No
4. Does there appear to be a sheen of the surface of accumulated groundwater or seeps within the excavation indicative of petroleum? No
5. Is stained soil in contact with groundwater? No

Please Include relevant photos of the site conditions for items 1-5.

Location name: ERICKSON A04-12, 05-123-26531

Please Circle Facility Type: Flowline





Site Area/AOC: ERICKSON A04-12, 05-123-26531 Client: Noble



Daily Forecast/Weather: 40s, sunny Personnel: E Gooding-Lord



Task/Location Description: Flowline Decommissioning

Need a photo log?

Need another General Observation Form?

					
Equipment ID: FL01-01 @ 4'		Equipment Type:			
Material:	Volume:	Contents:			
Notes/Conditions:					

					
Equipment ID: FL01-02 @ 4'		Equipment Type:			
Material:	Volume:	Contents:			
Notes/Conditions:					

							
Equipment ID: FL01-03 @ 4'		Equipment Type:		Equipment ID: BKG02 @ 2', BKG02 @ 3', BKG02 @ 4'		Equipment Type:	
Material:	Volume:	Contents:	Material:	Volume:	Contents:		
Notes/Conditions:			Notes/Conditions:				



Equipment ID: BKG03@2', BKG03@3', BKG03@4'		Equipment Type:		Equipment ID:		Equipment Type:	
Material:	Volume:	Contents:		Material:	Volume:	Contents:	
Notes/Conditions:				Notes/Conditions:			