

**LEGEND**

- INITIAL ASSESSMENT BOUNDARIES
- **SS-02** APPROXIMATE LOCATION OF SOIL SAMPLES FIELD SCREENED, ONLY, WITH PHOTOIONIZATION DETECTOR
- APPROXIMATE LOCATION OF SOIL SAMPLES SUBMITTED FOR LABORATORY ANALYSIS

**PARAMETERS**

SAMPLE LOCATION  
 DATE  
 DEPTH (FEET)  
 B = BENZENE (mg/kg)  
 T = TOLUENE (mg/kg)  
 E = ETHYLBENZENE (mg/kg)  
 X = TOTAL XYLENES (mg/kg)  
 N = NAPHTHALENE (mg/kg)  
 G = TPH-GRO (mg/kg)  
 D = TPH-DRO (mg/kg)  
 R = TPH-RRO (mg/kg)  
 1,2,4-TMB = 1,2,4 TRIMETHYLBENZENE (mg/kg)  
 1,3,5-TMB = 1,3,5 TRIMETHYLBENZENE (mg/kg)  
 Brn= BORON (mg/L)  
 EC = SPECIFIC CONDUCTANCE (mmhos/cm)  
 SAR= SODIUM ADSORPTION RATIO  
 pH = pH (pH UNITS)  
 POLYCYCLIC AROMATIC HYDROCARBONS (PAHs) (mg/kg)

mg/kg = MILLIGRAMS PER KILOGRAM  
 mg/L = MILLIGRAMS PER LITER  
 mmhos/cm = MILLIMHOS PER CENTIMETER

(BRL) = ALL VALUES BELOW REGULATORY LIMITS

TPH-GRO = TOTAL PETROLEUM HYDROCARBONS – GASOLINE RANGE ORGANICS  
 TPH-DRO = TOTAL PETROLEUM HYDROCARBONS – DIESEL RANGE ORGANICS  
 TPH-RRO = TOTAL PETROLEUM HYDROCARBONS – RESIDUAL RANGE ORGANICS

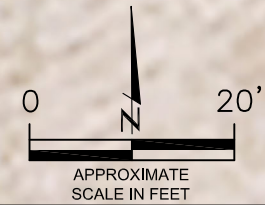
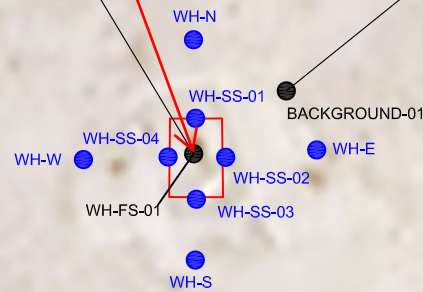
NOTES:  
 VALUES PRESENTED IN **BOLD** EXCEED ECMC TABLE 915-1 REGULATORY LIMITS.

ECMC = ENERGY & CARBON MANAGEMENT COMMISSION

**Re-Sample for Full Table 915-1 Suite**

WH-FS-01@7'  
 02/23/24  
 7'  
 (BRL)

BACKGROUND-01@2'  
 02/23/24  
 2'  
 Brn= 0.395  
 EC = 0.333  
 SAR= 0.620  
 pH = **8.32**



**Proposed Site Investigation Plan**  
 GIBSON #11-9  
 CLOSURE ASSESSMENT 40.506190 /  
 -104.448170  
 NW1/4 NW1/4 Sec.9 T6N R63W 6PM  
 WELD COUNTY, COLORADO API #  
 05-123-23102 REMEDIATION #  
 31628

FIGURE NO.  
 1  
 DRAWN BY:  
 RS

**EAGLE**  
 ENVIRONMENTAL  
 CONSULTING, LLC

8000 W 44th Ave, Wheat Ridge, CO 80033  
 Ph: 303-433-0479 • F: 303-325-5449



**LEGEND**

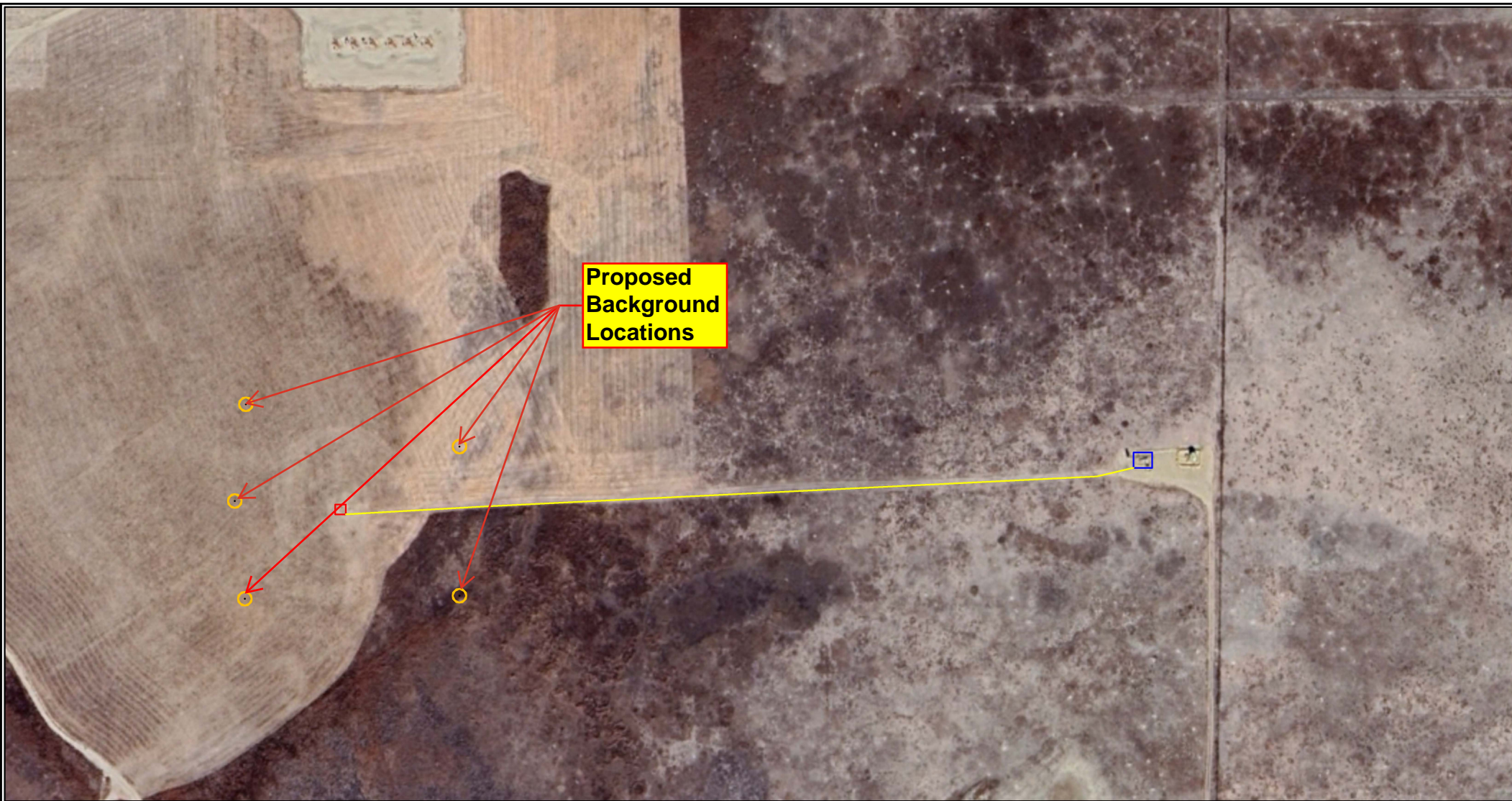
- WELL HEAD LOCATION
- ▲ PID READING LOCATION
- ABOVE GROUND STORAGE TANK
- FORMER FACILITY
- FORMER FLOWLINE
- FENCE LINE
- CONTAINMENT BERM
- CONTAINMENT WALL

**Figure 2  
PROPOSED SITE INVESTIGATION PLAN**

**Noble Energy, Inc. ~ Gibson 11-9**  
 NWNW Sec. 9, T6N, R63W, 6th PM  
 Weld County, Colorado  
 40.506190°, -104.448170°

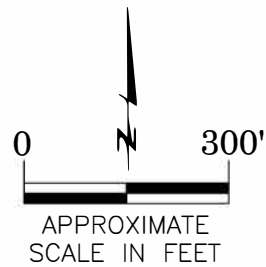
Project No. <b>CO24-083</b>	API # <b>123-23102</b>	Facility #
Date <b>2/27/25</b>	Remediation # <b>31628</b>	Filename <b>24083Q</b>





**LEGEND**

- FORMER GIBSON #11-9 WELLHEAD (PLUGGED AND ABANDONED)
- ASSOCIATED SEPARATOR
- APPROXIMATE FLOWLINE LOCATION



Proposed Background Locations  
 GIBSON #11-9  
 CLOSURE ASSESSMENT  
 40.506190 / -104.448170  
 NW¼ NW¼ SEC.9 T6N R63W  
 6PM WELD COUNTY, COLORADO  
 API # 05-123-23102  
 REMEDIATION # 31628

FIGURE NO.  
3

DRAWN BY:  
RS



**EAGLE**  
 ENVIRONMENTAL  
 CONSULTING, LLC  
 8000 W 44th Ave, Wheat Ridge, CO 80033  
 Ph: 303-433-0479 • F: 303-325-5449