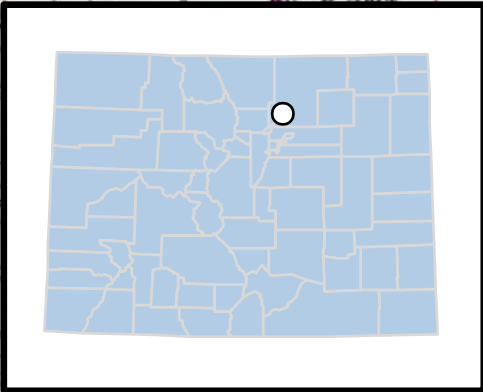
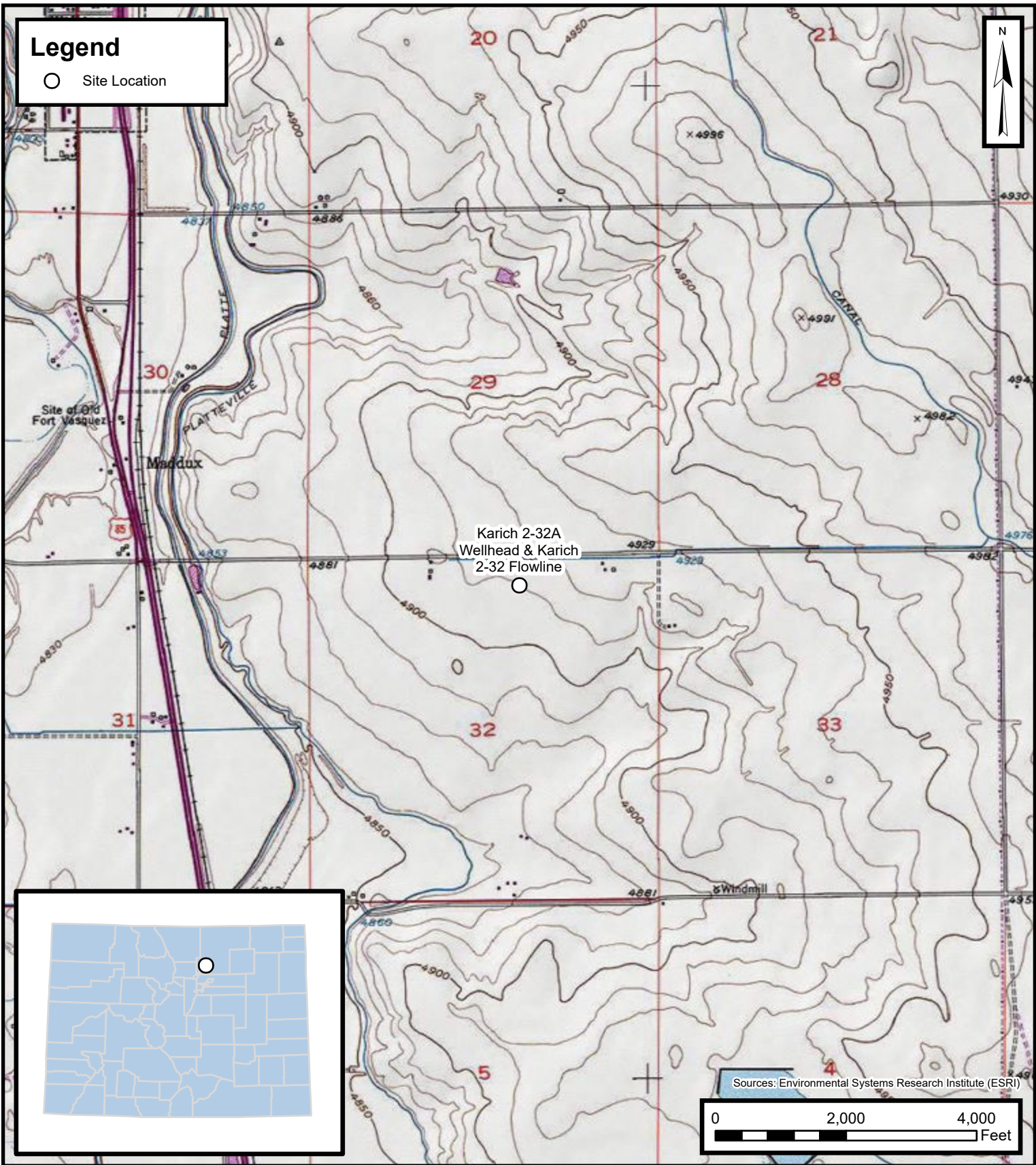


Legend

○ Site Location



Environmental, Engineering and Hydrogeologic Consultants

Site Location Map

Karich 2-32A Wellhead & Karich 2-32 Flowline
Kerr-McGee Oil & Gas Onshore, LP
NWNE SEC 32-T3N-R66W
Weld County, CO

Project Number: 09A14171075

FIGURE

1