

# **FLOWLINE DECOMMISSIONING REPORT**

## **KY BLUE H25-15, KY BLUE H25-10, & KY H25-24 FLOWLINES**

**ECMC SPILL TRACKING #489959, 489958 & 490198  
ECMC REMEDIATION # 32903**

Prepared for:

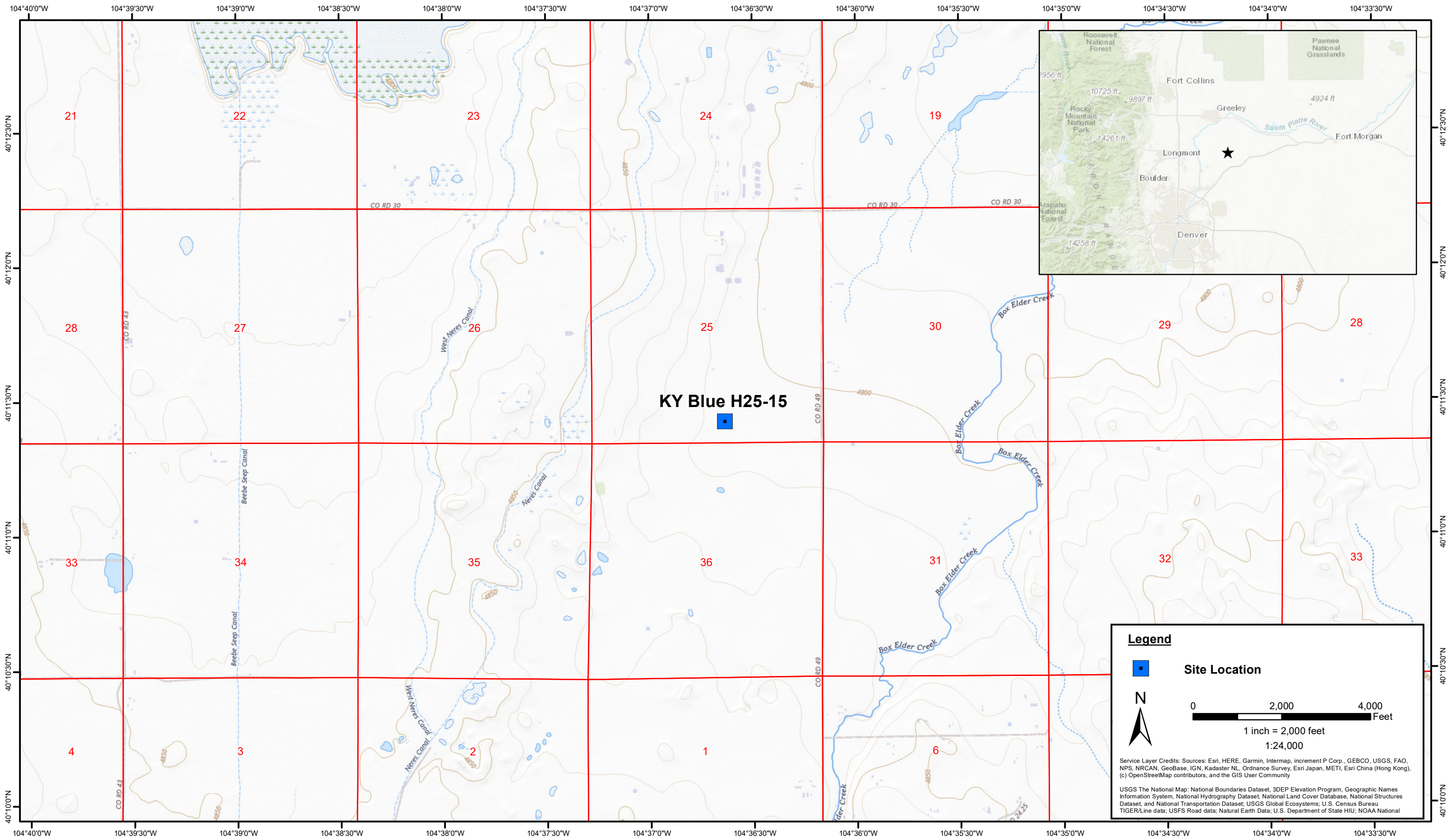


1099 18th Street  
Suite 1500  
Denver, CO 80202

Prepared by:



4725 Independence Street  
Wheat Ridge, CO 80033



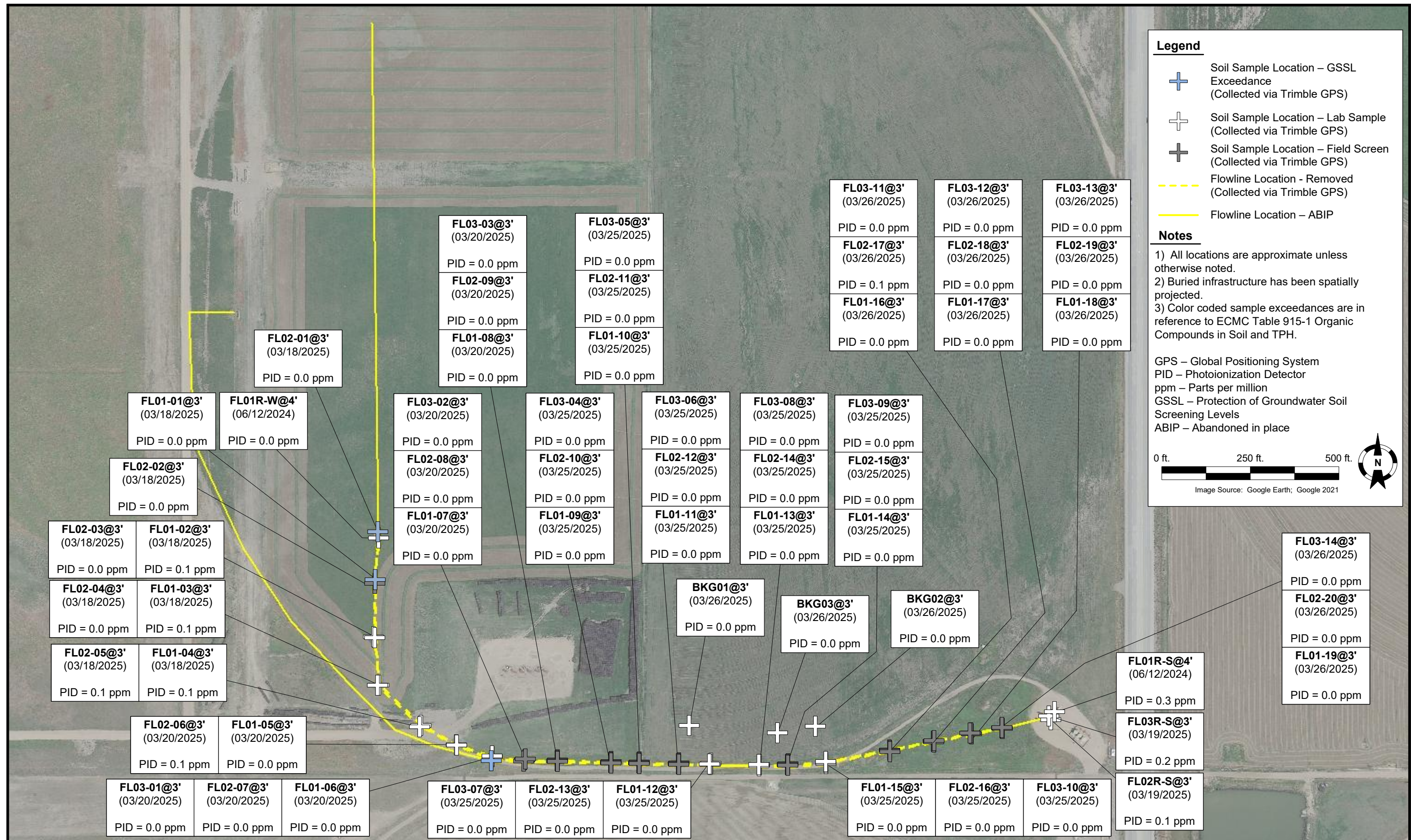
DATE:	April 2025
DESIGNED BY:	J. Whritenour
DRAWN BY:	J. Woffinden



**Noble Energy Inc. - 100322 - DJ Basin**  
**KY Blue H25-15**  
 SWSE, Section 25, Township 3 North, Range 65 West  
 Weld County, Colorado

Site Location Map

**Figure**  
**1**



DATE: May 14, 2025

DESIGNED BY: J. Whritenour

DRAWN BY: L. Bohannon



**Noble Energy, Inc. – 100322 – DJ Basin**  
**KY Blue H25-15, KY Blue H25-10, & KY H25-24 Flowlines**  
 SWSE, Section 25, Township 3 North, Range 65 West  
 Weld County, Colorado

**SOIL SAMPLE LOCATION MAP**  
 (06/12/2024 &  
 03/18/2025 – 03/26/2025)

**TABLE 1  
FIELD DATA SUMMARY TABLE  
NOBLE ENERGY, INC. - 100322**

**KY BLUE H25-15, KY BLUE H25-10, KY H25-24 FLOWLINES, WELD COUNTY, COLORADO  
REM # 32903**



Sample ID	Sample Date	Depth (ft. bgs)	GPS Data <sup>(1)</sup> Latitude/Longitude		PDOP Value	VOC Concentration <sup>(2)</sup> (ppm)
<b>KY BLUE H25-15 Flowline</b>						
FL01R-S@4'	6/12/2024	4	40.189313	-104.603708	0.9	0.3
FL01R-W@4'	6/12/2024	4	40.190706	-104.610539	1.4	0.0
FL01-01@3'	3/18/2025	3	40.190383	-104.610571	1.5	0.0
FL01-02@3'	3/18/2025	3	40.189935	-104.610579	0.9	0.1
FL01-03@3'	3/18/2025	3	40.189568	-104.610552	0.8	0.1
FL01-04@3'	3/18/2025	3	40.189246	-104.610125	0.8	0.1
FL01-05@3'	3/20/2025	3	40.189095	-104.609762	0.9	0.0
FL01-06@3'	3/20/2025	3	40.188998	-104.609402	1.5	0.0
FL01-07@3'	3/20/2025	3	40.188970	-104.609075	0.9	0.0
FL01-08@3'	3/20/2025	3	40.188964	-104.608740	0.8	0.0
FL01-09@3'	3/25/2025	3	40.188955	-104.608199	0.8	0.0
FL01-10@3'	3/25/2025	3	40.188949	-104.607912	0.7	0.0
FL01-11@3'	3/25/2025	3	40.188939	-104.607517	0.8	0.0
FL01-12@3'	3/25/2025	3	40.188936	-104.607197	0.9	0.0
FL01-13@3'	3/25/2025	3	40.188929	-104.606703	0.8	0.0
FL01-14@3'	3/25/2025	3	40.188926	-104.606411	1.0	0.0
FL01-15@3'	3/25/2025	3	40.188951	-104.606024	0.8	0.0
FL01-16@3'	3/26/2025	3	40.189039	-104.605388	0.8	0.0
FL01-17@3'	3/26/2025	3	40.189108	-104.604932	0.9	0.0
FL01-18@3'	3/26/2025	3	40.189163	-104.604560	0.8	0.0
FL01-19@3'	3/26/2025	3	40.189211	-104.604242	0.9	0.0
<b>KY BLUE H25-10 Flowline</b>						
FL02-01@3'	3/18/2025	3	40.190758	-104.610548	0.8	0.0
FL02-02@3'	3/18/2025	3	40.190360	-104.610579	0.8	0.0
FL02-03@3'	3/18/2025	3	40.189942	-104.610589	0.8	0.0
FL02-04@3'	3/18/2025	3	40.189568	-104.610533	0.8	0.0
FL02-05@3'	3/18/2025	3	40.189256	-104.610116	0.8	0.1
FL02R-S@3'	3/19/2025	3	40.189283	-104.603755	0.8	0.1
FL02-06@3'	3/20/2025	3	40.189097	-104.609760	1.0	0.1
FL02-07@3'	3/20/2025	3	40.189000	-104.609395	0.9	0.0
FL02-08@3'	3/20/2025	3	40.188973	-104.609076	0.9	0.0
FL02-09@3'	3/20/2025	3	40.188971	-104.608739	0.8	0.0
FL02-10@3'	3/25/2025	3	40.188958	-104.608200	0.8	0.0
FL02-11@3'	3/25/2025	3	40.188952	-104.607915	0.8	0.0
FL02-12@3'	3/25/2025	3	40.188941	-104.607519	0.8	0.0
FL02-13@3'	3/25/2025	3	40.188940	-104.607195	0.9	0.0
FL02-14@3'	3/25/2025	3	40.188931	-104.606701	0.8	0.0
FL02-15@3'	3/25/2025	3	40.188928	-104.606413	1.0	0.0
FL02-16@3'	3/25/2025	3	40.188948	-104.606028	0.8	0.0
FL02-17@3'	3/26/2025	3	40.189043	-104.605388	0.8	0.1
FL02-18@3'	3/26/2025	3	40.189109	-104.604934	0.9	0.0
FL02-19@3'	3/26/2025	3	40.189163	-104.604560	0.9	0.0
FL02-20@3'	3/26/2025	3	40.189210	-104.604241	0.8	0.0
<b>KY H25-24 Flowline</b>						
FL03R-S@3'	3/19/2025	3	40.189291	-104.603763	0.8	0.2
FL03-01@3'	3/20/2025	3	40.188977	-104.609405	0.9	0.0

**TABLE 1**  
**FIELD DATA SUMMARY TABLE**  
**NOBLE ENERGY, INC. - 100322**  
**KY BLUE H25-15, KY BLUE H25-10, KY H25-24 FLOWLINES, WELD COUNTY, COLORADO**  
**REM # 32903**



Sample ID	Sample Date	Depth (ft. bgs)	GPS Data <sup>(1)</sup>		PDOP Value	VOC Concentration <sup>(2)</sup> (ppm)
			Latitude/Longitude			
FL03-02@3'	3/20/2025	3	40.188966	-104.609076	0.8	0.0
FL03-03@3'	3/20/2025	3	40.188970	-104.608748	1.1	0.0
FL03-04@3'	3/25/2025	3	40.188952	-104.608199	0.9	0.0
FL03-05@3'	3/25/2025	3	40.188948	-104.607911	0.7	0.0
FL03-06@3'	3/25/2025	3	40.188939	-104.607517	0.8	0.0
FL03-07@3'	3/25/2025	3	40.188933	-104.607197	0.8	0.0
FL03-08@3'	3/25/2025	3	40.188925	-104.606703	0.8	0.0
FL03-09@3'	3/25/2025	3	40.188924	-104.606409	1.0	0.0
FL03-10@3'	3/25/2025	3	40.188945	-104.606030	0.8	0.0
FL03-11@3'	3/26/2025	3	40.189034	-104.605389	0.8	0.0
FL03-12@3'	3/26/2025	3	40.189105	-104.604936	0.9	0.0
FL03-13@3'	3/26/2025	3	40.189161	-104.604559	0.8	0.0
FL03-14@3'	3/26/2025	3	40.189210	-104.604243	0.8	0.0
<b>Background Data</b>						
BKG01@3'	3/26/2025	3	40.189241	-104.607406	0.8	0.0
BKG02@3'	3/26/2025	3	40.189225	-104.606133	0.9	0.0
BKG03@3'	3/26/2025	3	40.189183	-104.606510	0.8	0.0

**Notes:**

1. Global Positioning System (GPS) data is provided in decimal degrees using North American Datum (NAD) 83 UTM Zone 13 North.
2. Volatile organic compound (VOC) concentrations are measured in the field using a photoionization detector (PID).

PDOP = Position Dilution of Precision

ppm = Parts per million

ft. = Feet

bgs = Below ground surface

TABLE 2  
SUMMARY OF VOLATILE ORGANIC SOIL CHEMISTRY DATA  
NOBLE ENERGY, INC. - 100322  
KY BLUE H25-15, KY BLUE H25-10, KY H25-24 FLOWLINES, WELD COUNTY, COLORADO  
REM # 32903



Sample ID	Sample Date	Depth (ft. bgs)	Benzene (mg/kg)	Toluene (mg/kg)	Ethyl-Benzene (mg/kg)	Xylenes (mg/kg)	1,2,4-Trimethyl-Benzene (mg/kg)	1,3,5-Trimethyl-Benzene (mg/kg)	Naphthalene (mg/kg)	TPH (mg/kg)	TPH GRO (mg/kg)	TPH DRO (mg/kg)	TPH ORO (mg/kg)
ECMC Table 915-1 Limits (Residential SSL)			1.2	490	5.8	58	30	27	2	500	500**		
ECMC Table 915-1 Limits (Protection of Groundwater SSL)			0.0026	0.69	0.78	9.9	0.0081	0.0087	0.0038	500	500**		
KY BLUE H25-15 Flowline													
FL01R-S@4'	6/12/2024	4	<0.0020	<0.0050	<0.0050	<0.010	<0.0050	<0.0050	<0.0038	<50	<0.50	<50	<50
FL01R-W@4'	6/12/2024	4	<0.0020	<0.0050	<0.0050	<0.010	<0.0050	<0.0050	<0.0038	<50	<0.50	<50	<50
FL01-01@3'	3/18/2025	3	<0.00200	<0.00200	<0.00200	<0.00200	<0.00200	<0.00200	0.00285	<100	<0.200	<25.0	<100
FL01-02@3'	3/18/2025	3	<0.00200	<0.00200	<0.00200	<0.00200	<0.00200	<0.00200	<0.00201	<100	<0.200	<25.0	<100
FL01-03@3'	3/18/2025	3	<0.00200	<0.00200	<0.00200	<0.00200	<0.00200	<0.00200	<0.00201	<100	<0.200	<25.0	<100
FL01-04@3'	3/18/2025	3	<0.00200	<0.00200	<0.00200	<0.00200	<0.00200	<0.00200	<0.00201	<100	<0.200	<25.0	<100
FL01-05@3'	3/20/2025	3	<0.0020	<0.0050	<0.0050	<0.010	<0.0050	<0.0050	<0.0038	<50 <sup>[B]</sup>	<0.50	<50 <sup>[B]</sup>	<50 <sup>[B]</sup>
FL01-06@3'	3/20/2025	3	<0.0020	<0.0050	<0.0050	<0.010	<0.0050	<0.0050	<0.0038	<50 <sup>[B]</sup>	<0.50	<50 <sup>[B]</sup>	<50 <sup>[B]</sup>
FL01-12@3'	3/25/2025	3	<0.0020	<0.0050	<0.0050	<0.010	<0.0050	<0.0050	<0.0038	34.24 J	0.24 J	21 J	13 J
FL01-13@3'	3/25/2025	3	<0.0020	<0.0050	<0.0050	<0.010	<0.0050	<0.0050	<0.0038	34.25 J	0.25 J	21 J	13 J
FL01-15@3'	3/25/2025	3	<0.0020	<0.0050	<0.0050	<0.010	<0.0050	<0.0050	<0.0038	37.23 J	0.23 J	23 J	14 J
KY BLUE H25-10 Flowline													
FL02-01@3'	3/18/2025	3	<0.00200	<0.00200	<0.00200	<0.00200	<0.00200	<0.00200	0.00191 J	<100	<0.200	<25.0	<100
FL02-03@3'	3/18/2025	3	<0.00200	<0.00200	<0.00200	<0.00200	<0.00200	<0.00200	<0.00201	<100	<0.200	<25.0	<100
FL02-04@3'	3/18/2025	3	<0.00200	<0.00200	<0.00200	<0.00200	<0.00200	<0.00200	<0.00201	<100	<0.200	<25.0	<100
FL02-05@3'	3/18/2025	3	<0.00200	<0.00200	<0.00200	<0.00200	<0.00200	<0.00200	<0.00201	<100	<0.200	<25.0	<100
FL02R-S@3'	3/19/2025	3	<0.00200	<0.00200	<0.00200	<0.00200	<0.00200	<0.00200	<0.00201	<100	<0.200	<25.0	<100
FL02-06@3'	3/20/2025	3	<0.0020	<0.0050	<0.0050	<0.010	<0.0050	<0.0050	<0.0038	<50 <sup>[B]</sup>	<0.50	<50 <sup>[B]</sup>	<50 <sup>[B]</sup>
FL02-07@3'	3/20/2025	3	<0.0020	<0.0050	<0.0050	<0.010	<0.0050	<0.0050	<0.0038	<50 <sup>[B]</sup>	<0.50	<50 <sup>[B]</sup>	<50 <sup>[B]</sup>
FL02-13@3'	3/25/2025	3	<0.0020	<0.0050	<0.0050	<0.010	<0.0050	<0.0050	<0.0038	34.23 J	0.23 J	21 J	13 J
FL02-14@3'	3/25/2025	3	<0.0020	<0.0050	<0.0050	<0.010	<0.0050	<0.0050	<0.0038	33.24 J	0.24 J	20 J	13 J
FL02-16@3'	3/25/2025	3	<0.0020	<0.0050	<0.0050	<0.010	<0.0050	<0.0050	<0.0038	34.23 J	0.23 J	21 J	13 J
KY H25-24 Flowline													
FL03R-S@3'	3/19/2025	3	<0.00200	<0.00200	<0.00200	<0.00200	<0.00200	<0.00200	<0.00201	<100	<0.200	<25.0	<100
FL03-01@3'	3/20/2025	3	<0.0020	<0.0050	<0.0050	<0.010	<0.0050	<0.0050	<0.0038	<50 <sup>[B]</sup>	<0.50	<50 <sup>[B]</sup>	<50 <sup>[B]</sup>
FL03-07@3'	3/25/2025	3	<0.0020	<0.0050	<0.0050	<0.010	<0.0050	<0.0050	<0.0038	39.24 J	0.24 J	24 J	15 J
FL03-08@3'	3/25/2025	3	<0.0020	<0.0050	<0.0050	<0.010	<0.0050	<0.0050	<0.0038	35.23 J	0.23 J	21 J	14 J
FL03-10@3'	3/25/2025	3	<0.0020	<0.0050	<0.0050	<0.010	<0.0050	<0.0050	<0.0038	34.23 J	0.23 J	21 J	13 J

**Notes:**

- Bold values exceed the ECMC Table 915-1 limit(s).
- Pink & blue highlighted soil analytical values indicate an exceedance of the referenced soil screening level
- The initial 8015 results were lost due to a software issue at Summit Scientific. These analyses were reran outside of recommended hold-time.

ECMC = Energy & Carbon Management Commission

(<) = Analytical result is less than the indicated laboratory reporting limit.

TPH-GRO = Total petroleum hydrocarbons - gasoline range organics

TPH-DRO = Total petroleum hydrocarbons - diesel range organics

TPH-ORO = Total petroleum hydrocarbons - oil range organics

mg/kg = Milligrams per kilogram

ft. = Feet

bgs = Below ground surface

\*\* Summation of GRO+DRO+ORO must be less than 500 mg/kg.

J = Detected but below the Reporting Limit, therefore, result is an estimated concentration.

TABLE 3  
SUMMARY OF POLYCYCLIC AROMATIC HYDROCARBON SOIL CHEMISTRY DATA  
NOBLE ENERGY, INC. - 100322  
KY BLUE H25-15, KY BLUE H25-10, KY H25-24 FLOWLINES, WELD COUNTY, COLORADO  
REM # 32903



Sample ID	Sample Date	Depth (ft. bgs)	Acenaphthene (mg/kg)	Anthracene (mg/kg)	Benzo (a) Anthracene (mg/kg)	Benzo (a) Pyrene (mg/kg)	Benzo (b) Fluoranthene (mg/kg)	Benzo (k) Fluoranthene (mg/kg)	Chrysene (mg/kg)	Dibenzo (a,h) Anthracene (mg/kg)	Fluoranthene (mg/kg)	Fluorene (mg/kg)	Indeno (1,2,3-cd) Pyrene (mg/kg)	Pyrene (mg/kg)	1-Methyl - Naphthalene (mg/kg)	2-Methyl - Naphthalene (mg/kg)
ECMC Table 915-1 Limits (Residential SSL)			360	1,800	1.1	0.11	1.1	11	110	0.11	240	240	1.1	180	18	24
ECMC Table 915-1 Limits (Protection of Groundwater SSL)			0.55	5.8	0.011	0.24	0.3	2.9	9	0.096	8.9	0.54	0.98	1.3	0.006	0.019
KY BLUE H25-15 Flowline																
FL01R-S@4'	6/12/2024	4	<0.00500	<0.00500	<0.00500	<0.00500	<0.00500	<0.00500	<0.00500	<0.00500	<0.00500	<0.00500	<0.00500	<0.00500	<0.00500	<0.00500
FL01R-W@4'	6/12/2024	4	<0.00500	<0.00500	<0.00500	<0.00500	<0.00500	<0.00500	<0.00500	<0.00500	<0.00500	<0.00500	<0.00500	<0.00500	<0.00500	<0.00500
FL01-01@3'	3/18/2025	3	<0.00067	<0.00067	0.00202	0.00231	0.00277	0.00145	0.01	<0.00067	0.0015	0.00114	0.0016	0.00326	<b>0.0105</b>	0.00924
FL01-02@3'	3/18/2025	3	<0.00067	<0.00067	<0.00067	<0.00067	<0.00067	<0.00067	<0.00067	<0.00067	<0.00067	<0.00067	<0.00067	<0.00067	<0.00201	<0.00201
FL01-03@3'	3/18/2025	3	<0.00067	0.0013	0.000539 J	<0.00067	0.000887	<0.00067	0.00135	<0.00067	0.000498 J	<0.00067	<0.00067	0.000724	0.00129 J	<0.00201
FL01-04@3'	3/18/2025	3	<0.00067	<0.00067	<0.00067	<0.00067	<0.00067	<0.00067	<0.00067	<0.00067	<0.00067	<0.00067	<0.00067	<0.00067	<0.00201	<0.00201
FL01-05@3'	3/20/2025	3	<0.00500	<0.00500	<0.00500	<0.00500	<0.00500	<0.00500	<0.00500	<0.00500	<0.00500	<0.00500	<0.00500	<0.00500	<0.00500	<0.00500
FL01-06@3'	3/20/2025	3	<0.00500	<0.00500	<0.00500	<0.00500	<0.00500	<0.00500	<0.00500	<0.00500	<0.00500	<0.00500	<0.00500	<0.00500	<0.00500	<0.00500
FL01-12@3'	3/25/2025	3	<0.0500	<0.0500	<0.00363 <sup>(J)</sup>	<0.0500	<0.0500	<0.0500	<0.0500	<0.0500	<0.0500	<0.0500	<0.0500	<0.0500	<0.0500*	<0.0189 <sup>(J)</sup>
FL01-13@3'	3/25/2025	3	<0.00500	<0.00500	<0.00500	<0.00500	<0.00500	<0.00500	<0.00500	<0.00500	<0.00500	<0.00500	<0.00500	<0.00500	<0.00500	<0.00500
FL01-15@3'	3/25/2025	3	<0.00500	<0.00500	<0.00500	<0.00500	<0.00500	<0.00500	<0.00500	<0.00500	<0.00500	<0.00500	<0.00500	<0.00500	<0.00500	<0.00500
KY BLUE H25-10 Flowline																
FL02-01@3'	3/18/2025	3	<0.00067	<0.00067	0.00106	0.0019	0.00276	0.0011	0.00614	<0.00067	0.00145	0.000528 J	0.00137	0.00238	<b>0.00624</b>	0.00551
FL02-03@3'	3/18/2025	3	<0.00067	<0.00067	<0.00067	<0.00067	<0.00067	<0.00067	<0.00067	<0.00067	<0.00067	<0.00067	<0.00067	<0.00067	<0.00201	<0.00201
FL02-04@3'	3/18/2025	3	<0.00067	<0.00067	0.000882	0.0011	0.00172	0.000618 J	0.00353	<0.00067	0.0013	<0.00067	0.000821	0.00161	0.00334	0.00282
FL02-05@3'	3/18/2025	3	<0.00067	<0.00067	<0.00067	<0.00067	<0.00067	<0.00067	<0.00067	<0.00067	<0.00067	<0.00067	<0.00067	<0.00067	<0.00201	<0.00201
FL02R-S@3'	3/19/2025	3	<0.00067	<0.00067	0.000576 J	<0.00067	<0.00067	<0.00067	<0.00067	<0.00067	0.000608 J	<0.00067	<0.00067	<0.00067	<0.00201	<0.00201
FL02-06@3'	3/20/2025	3	<0.00500	<0.00500	<0.00500	<0.00500	<0.00500	<0.00500	<0.00500	<0.00500	<0.00500	<0.00500	<0.00500	<0.00500	<0.00500	<0.00500
FL02-07@3'	3/20/2025	3	<0.00500	<0.00500	<0.00500	<0.00500	<0.00500	<0.00500	<0.00500	<0.00500	<0.00500	<0.00500	<0.00500	<0.00500	<0.00500	<0.00500
FL02-13@3'	3/25/2025	3	<0.00500	<0.00500	<0.00500	<0.00500	<0.00500	<0.00500	<0.00500	<0.00500	<0.00500	<0.00500	<0.00500	<0.00500	<0.00500	<0.00500
FL02-14@3'	3/25/2025	3	<0.00500	<0.00500	<0.00500	<0.00500	<0.00500	<0.00500	<0.00500	<0.00500	<0.00500	<0.00500	<0.00500	<0.00500	<0.00500	<0.00500
FL02-16@3'	3/25/2025	3	<0.00500	<0.00500	<0.00500	<0.00500	<0.00500	<0.00500	<0.00500	<0.00500	<0.00500	<0.00500	<0.00500	<0.00500	<0.00500	<0.00500
KY H25-24 Flowline																
FL03R-S@3'	3/19/2025	3	<0.00067	<0.00067	0.000547 J	<0.00067	<0.00067	<0.00067	<0.00067	<0.00067	0.000436 J	<0.00067	<0.00067	<0.00067	<0.00201	<0.00201
FL03-01@3'	3/20/2025	3	0.0529	0.0988	<b>0.0991</b>	0.0659	0.103	0.0392	0.0981	<0.00500	0.302	0.0662	0.0397	0.259	<b>0.00688</b>	0.0137
FL03-07@3'	3/25/2025	3	<0.00500	<0.00500	<0.00500	<0.00500	<0.00500	<0.00500	<0.00500	<0.00500	<0.00500	<0.00500	<0.00500	<0.00500	<0.00500	<0.00500
FL03-08@3'	3/25/2025	3	<0.00500	<0.00500	<0.00500	<0.00500	<0.00500	<0.00500	<0.00500	<0.00500	<0.00500	<0.00500	<0.00500	<0.00500	<0.00500	<0.00500
FL03-10@3'	3/25/2025	3	<0.00500	<0.00500	<0.00500	<0.00500	<0.00500	<0.00500	<0.00500	<0.00500	<0.00500	<0.00500	<0.00500	<0.00500	<0.00500	<0.00500

**Notes:**

- Bold** values exceed the ECMC Table 915-1 limit(s).
  - Pink & blue highlighted soil analytical values indicate an exceedance of the referenced soil screening level (SSL).
  - Method detection limit
- ECMC = Colorado Energy & Carbon Management Commission  
 (-) = Analytical result is less than the indicated laboratory reporting limit.  
 ft. = Feet  
 bgs = Below ground surface  
 mg/kg = Milligrams per kilogram  
 \* Indicates laboratory minimum detection limit in excess of SSL  
 J = Detected but below the Reporting Limit, therefore, result is an estimated concentration.

**TABLE 4**  
**SUMMARY OF SOIL SUITABILITY FOR RECLAMATION**  
**NOBLE ENERGY, INC. - 100322**  
**KY BLUE H25-15, KY BLUE H25-10, KY H25-24 FLOWLINES, WELD COUNTY, COLORADO**  
**REM # 32903**



Sample ID	Sample Date	Depth (ft. bgs)	pH (Standard Units)	EC (mmhos/cm)	SAR (Standard Units)	Boron (mg/L)
ECMC Table 915-1 Soil Suitability Limits			6 - 8.3	<4	<6	2
<b>KY BLUE H25-15 Flowline</b>						
FL01R-S@4'	6/12/2024	4	9.45	0.0599	0.0527	<2.00
FL01R-W@4'	6/12/2024	4	8.45	0.111	0.597	<2.00
FL01-01@3'	3/18/2025	3	7.92	3.34	2.44	0.324
FL01-02@3'	3/18/2025	3	8.01	4.37	6.22	0.331
FL01-03@3'	3/18/2025	3	8.00	3.91	9.64	0.350
FL01-04@3'	3/18/2025	3	8.10	2.87	5.62	0.589
FL01-05@3'	3/20/2025	3	8.00	1.53	1.88	<2.00
FL01-06@3'	3/20/2025	3	7.85	5.15	4.35	<2.00
FL01-12@3'	3/25/2025	3	7.51	2.11	2.79	0.211 J
FL01-13@3'	3/25/2025	3	7.79	2.95	2.81	0.191 J
FL01-15@3'	3/25/2025	3	7.69	2.11	1.58	0.204 J
<b>KY BLUE H25-10 Flowline</b>						
FL02-01@3'	3/18/2025	3	7.99	2.05	1.47	0.293
FL02-03@3'	3/18/2025	3	8.09	2.40	4.01	0.213
FL02-04@3'	3/18/2025	3	8.00	3.19	7.57	0.374
FL02-05@3'	3/18/2025	3	8.02	2.24	3.37	0.417
FL02R-S@3'	3/19/2025	3	8.30	0.307	0.399	0.335
FL02-06@3'	3/20/2025	3	8.10	1.97	2.30	<2.00
FL02-07@3'	3/20/2025	3	7.58	3.88	4.70	<2.00
FL02-13@3'	3/25/2025	3	7.76	1.24	3.09	0.215 J
FL02-14@3'	3/25/2025	3	8.01	2.37	4.12	0.109 J
FL02-16@3'	3/25/2025	3	8.15	4.29	0.410	0.477 J
<b>KY H25-24 Flowline</b>						
FL03R-S@3'	3/19/2025	3	8.30	0.308	0.389	0.344
FL03-01@3'	3/20/2025	3	7.80	1.36	3.53	<2.00
FL03-07@3'	3/25/2025	3	7.27	1.96	2.20	0.181 J
FL03-08@3'	3/25/2025	3	7.96	2.08	2.56	0.160 J
FL03-10@3'	3/25/2025	3	7.98	3.71	4.44	0.489 J
<b>Background Data</b>						
BKG01@3'	3/26/2025	3	8.16	4.20	2.78	<2.00
BKG02@3'	3/26/2025	3	7.78	3.96	2.91	<2.00
BKG03@3'	3/26/2025	3	7.85	0.221	3.65	<2.00
Maximum Background Concentration			8.16	4.20	3.65	-

**Notes:**

- ECMC = Colorado Energy & Carbon Management Commission
- EC = Electrical conductivity
- SAR = Sodium adsorption ratio
- mmhos/cm = millimhos per centimeter
- mg/L = milligram per liter
- (<) = Analytical result is less than the indicated laboratory reporting limit.
- ft. = Feet
- bgs = Below ground surface
- RP = Results pending
- Bold** faced values exceed the ECMC Table 915-1 limit(s), but are within background concentrations.
- Bold** faced values exceed the ECMC Table 915-1 limit(s) and native background concentrations.
- Brown highlighted soil analytical values indicate a regulatory exceedance.
- J = Detected but below the Reporting Limit, therefore, result is an estimated concentration.

TABLE 5  
SUMMARY OF METALS IN SOIL CHEMISTRY DATA  
NOBLE ENERGY, INC. - 100322  
KY BLUE H25-15, KY BLUE H25-10, KY H25-24 FLOWLINES, WELD COUNTY, COLORADO  
REM # 32903



Sample ID	Sample Date	Depth (ft. bgs)	Arsenic (mg/kg)	Barium (mg/kg)	Cadmium (mg/kg)	Chromium (VI) <sup>1</sup> (mg/kg)	Copper (mg/kg)	Lead (mg/kg)	Nickel (mg/kg)	Selenium (mg/kg)	Silver (mg/kg)	Zinc (mg/kg)
ECMC Table 915-1 Limits (Residential SSL)			0.68	15,000	71	0.3	3,100	400	1,500	390	390	23,000
ECMC Table 915-1 Limits (Protection of Groundwater SSL)			0.29	82	0.38	0.00067	46	14	26	0.26	0.8	370
KY BLUE H25-15 Flowline												
FL01R-S@4'	6/12/2024	4	2.47	78.7	0.208	<0.30	5.53	6.02	4.07	<0.260	0.0659	17.5
FL01R-W@4'	6/12/2024	4	3.69	107	0.415	<0.30	14.4	18.3	3.61	<0.260	0.282	34.1
FL01-01@3'	3/18/2025	3	2.10	66.6	0.210	<0.5*	13.8	7.12	6.34	0.487	0.552	42.5
FL01-02@3'	3/18/2025	3	1.38	34.1	<0.0891	<0.5*	<8.91	3.56	3.53	<0.232	<0.0891	<33.0
FL01-03@3'	3/18/2025	3	1.34	38.3	0.0928	<0.5*	<9.18	4.16	3.35	<0.239	0.246	<34.0
FL01-04@3'	3/18/2025	3	1.32	37.3	<0.0842	<0.5*	<8.42	3.70	3.37	<0.219	<0.0842	<31.2
FL01-05@3'	3/20/2025	3	0.552	47.5	<0.200	<0.30	2.48	4.75	1.48	<0.260	0.0624	7.77
FL01-06@3'	3/20/2025	3	0.572	53.6	<0.200	<0.30	2.05	4.26	1.44	<0.260	0.0983	7.36
FL01-12@3'	3/25/2025	3	0.934	71.1	0.262	<0.30	6.39	10.3	2.66	0.307	1.02	22.3
FL01-13@3'	3/25/2025	3	0.793	62.0	0.128 J	<0.30	3.81	7.17	2.13	0.213 J	0.159	12.3
FL01-15@3'	3/25/2025	3	0.957	71.9	0.217	<0.30	8.85	8.51	2.75	0.379	0.522	25.2
KY BLUE H25-10 Flowline												
FL02-01@3'	3/18/2025	3	2.28	69.8	0.191	<0.504* J	13.6	11.7	5.53	0.250	0.277	45.7
FL02-03@3'	3/18/2025	3	1.51	35.4	<0.0961	<0.5*	<9.61	3.64	3.62	<0.250	<0.0961	<35.6
FL02-04@3'	3/18/2025	3	1.57	50.0	0.124	<0.513* J	<9.58	5.05	4.44	<0.249	0.351	<35.4
FL02-05@3'	3/18/2025	3	1.60	45.8	0.0977	<0.5*	<9.21	4.92	4.27	<0.240	<0.0921	<34.1
FL02R-S@3'	3/19/2025	3	2.68	82.6	0.148	NA	<9.57	7.72	8.35	<0.249	<0.0957	36.4
FL02-06@3'	3/20/2025	3	0.485	40.2	<0.200	<0.30	1.19	2.95	0.994	<0.260	0.0221	3.75
FL02-07@3'	3/20/2025	3	0.647	83.4	0.203	<0.30	2.74	6.48	1.77	<0.260	0.141	10.1
FL02-13@3'	3/25/2025	3	0.942	70.5	0.140 J	<0.30	4.37	7.28	2.55	<0.260	0.194	13.2
FL02-14@3'	3/25/2025	3	0.656	52.0	0.0900 J	<0.30	2.50	5.52	1.86	<0.260	0.0528	9.12
FL02-16@3'	3/25/2025	3	0.779	64.5	0.0986 J	<0.30	2.68	5.98	2.18	<0.260	0.0867	9.89
KY H25-24 Flowline												
FL03R-S@3'	3/19/2025	3	2.98	95.8	0.150	NA	9.38	8.13	8.90	0.262	<0.0872	38.3
FL03-01@3'	3/20/2025	3	0.500	40.7	<0.200	<0.30	1.53	3.86	1.21	<0.260	0.0309	5.19
FL03-07@3'	3/25/2025	3	0.953	76.7	0.226	<0.30	6.03	10.3	2.72	0.296	0.625	21.1
FL03-08@3'	3/25/2025	3	0.826	71.2	<0.200	<0.30	3.23	6.60	2.31	<0.260	0.173	11.7
FL03-10@3'	3/25/2025	3	0.752	55.4	<0.200	<0.30	2.53	5.15	2.15	<0.260	0.0427	9.84
Background Data												
BKG01@3'	3/26/2025	3	1.31	68.5	<0.200	<0.30	4.43	5.93	4.10	<0.260	0.0323	16.8
BKG02@3'	3/26/2025	3	1.69	93.2	0.118 J	<0.30	5.27	6.80	5.13	<0.260	0.0317	20.9
BKG03@3'	3/26/2025	3	1.32	71.1	0.0776 J	<0.30	4.39	5.40	4.08	<0.260	0.0265	16.4
Maximum Background Concentration X 1.25			2.11	117	0.250	-	-	8.50	-	0.325	0.0404	-

**Notes:**

1. Compound falls within ECMC Table 915-1 Footnote 9.

ECMC = Energy & Carbon Management Commission

(<) = Analytical result is less than the indicated laboratory reporting limit.

mg/kg = Milligrams per kilogram

ft. = Feet

bgs = Below ground surface

**bold** faced values exceed the ECMC Table 915-1 limit(s), but are within 1.25x background concentrations.

**Red** faced values exceed the ECMC Table 915-1 limit(s) and native background concentrations.

Red & blue highlighted soil analytical values indicate an exceedance of the referenced soil screening level (SSL).

\* Indicates laboratory minimum detection limit in excess of SSL.

J = Detected but below the Reporting Limit, therefore, result is an estimated concentration.



<b>CLIENT:</b> Noble		<b>SITE NAME:</b> KY BLUE H25-15					<b>DATE:</b> 3/17/2025	<b>REM. PROJECT #:</b> 32903	<b>WEATHER:</b> Clear, 53	
<b>SITE DIRECTIONS:</b> CR49//CR28, W 0.1 mi into site							<b>JOB#:</b>			
<b>LEGALS AND LAT/LONG:</b> 40.190720, -104.610550							<b>TASMAN PERSONNEL:</b> C. Kenigsberg			
<b>SOIL TYPES:</b> Well Graded Sand - SW							<b>SURFACE GRADIENT:</b> North			
<b>SOIL SAMPLING</b>							<b>FACILITY INFRASTRUCTURE</b>			
Date/Time	Soil Sample ID	PID (ppm)	Visual	Olfactory	Photo?	Grab or Lab Sample?	EQUIPMENT	Quantity		
							Above Ground Storage Tank (AST)			
03-18-2025 10:27	FL01-01@3'	0.0	No Staining	No Odor	Yes	Lab	Buried or Partially Buried Vessel			
03-18-2025 10:33	FL01-02@3'	0.1	No Staining	No Odor	Yes	Lab	Separator			
03-18-2025 11:25	FL02-01@3'	0.0	No Staining	No Odor	Yes	Lab	Emission Control Device (ECD)			
03-18-2025 11:28	FL02-02@3'	0.0	No Staining	No Odor	Yes	Grab	Dump Line			
03-18-2025 11:32	FL02-03@3'	0.0	No Staining	No Odor	Yes	Lab	Wellhead	1	✓	
03-18-2025 12:03	FL01-03@3'	0.1	No Staining	No Odor	Yes	Lab	Flowline	3	✓	
03-18-2025 12:05	FL02-04@3'	0.0	No Staining	No Odor	Yes	Lab	Other:			
03-18-2025 12:10	FL01-04@3'	0.1	No Staining	No Odor	Yes	Lab	Soil Loads Removed			
03-18-2025 12:11	FL02-05@3'	0.1	No Staining	No Odor	Yes	Lab	<b>IMPACTED SOIL IDENTIFIED?</b>			
							<b>ESTIMATED VOLUME OF IMPACTS:</b>			
							Date	Number	CY	
03-19-2025 11:15	FL02R-S@3'	0.1	No Staining	No Odor	Yes	Lab				
03-19-2025 11:20	FL03R-S@3'	0.2	No Staining	No Odor	Yes	Lab				
03-20-2025 12:34	FL01-05@3'	0.0	No Staining	No Odor	Yes	Lab				
03-20-2025 12:33	FL02-06@3'	0.1	No Staining	No Odor	Yes	Lab				
03-20-2025 14:16	FL01-06@3'	0.0	No Staining	No Odor	Yes	Lab	Total Removed	0	0	
03-20-2025 14:17	FL02-07@3'	0.0	No Staining	No Odor	Yes	Lab	<b>Disposal Facility:</b>			
03-20-2025 14:15	FL03-01@3'	0.0	No Staining	No Odor	Yes	Lab	Groundwater Recovery			
03-20-2025 15:28	FL01-07@3'	0.0	No Staining	No Odor	Yes	Grab	<b>DATE GW ENCOUNTERED:</b>	<b>DEPTH:</b>		
03-20-2025 15:29	FL02-08@3'	0.0	No Staining	No Odor	Yes	Grab	<b>GROUNDWATER IN CONTACT WITH IMPACTED SOIL?</b>			
03-20-2025 15:31	FL03-02@3'	0.0	No Staining	No Odor	Yes	Grab				
03-20-2025 15:34	FL01-08@3'	0.0	No Staining	No Odor	Yes	Grab	<b>LNAPL OR SHEEN OBSERVED ON GW?</b>			
							Date	BBLs		
Date/Time	Groundwater Sample ID	Depth Collected	Turbid?	Sheen?	Odor?	Photo?				
							Total Removed	0		
							<b>Disposal Facility:</b>			

SOIL SAMPLING							Soil Loads Removed		
Date/Time	Soil Sample ID	PID (ppm)	Visual	Olfactory	Photo?	Grab or Lab Sample?	Date	Number	CY
03-20-2025 15:37	FL02-09@3'	0.0	No Staining	No Odor	Yes	Grab			
03-20-2025 15:38	FL03-03@3'	0.0	No Staining	No Odor	Yes	Grab			
03-25-2025 11:47	FL01-09@3'	0.0	No Staining	No Odor	Yes	Grab			
03-25-2025 11:48	FL02-10@3'	0.0	No Staining	No Odor	Yes	Grab			
03-25-2025 11:49	FL03-04@3'	0.0	No Staining	No Odor	Yes	Grab			
03-25-2025 12:02	FL01-10@3'	0.0	No Staining	No Odor	Yes	Grab			
03-25-2025 12:03	FL02-11@3'	0.0	No Staining	No Odor	Yes	Grab			
03-25-2025 12:04	FL03-05@3'	0.0	No Staining	No Odor	Yes	Grab			
03-25-2025 12:25	FL01-11@3'	0.0	No Staining	No Odor	Yes	Grab			
03-25-2025 12:26	FL02-12@3'	0.0	No Staining	No Odor	Yes	Grab			
03-25-2025 12:27	FL03-06@3'	0.0	No Staining	No Odor	Yes	Grab			
03-25-2025 13:34	FL01-12@3'	0.0	No Staining	No Odor	Yes	Lab			
03-25-2025 13:35	FL02-13@3'	0.0	No Staining	No Odor	Yes	Lab			
03-25-2025 13:36	FL03-07@3'	0.0	No Staining	No Odor	Yes	Lab			
03-25-2025 13:47	FL01-13@3'	0.0	No Staining	No Odor	Yes	Lab	<b>Total Removed</b>	0	0
03-25-2025 13:48	FL02-14@3'	0.0	No Staining	No Odor	Yes	Lab	<b>Disposal Facility:</b>		
03-25-2025 13:50	FL03-08@3'	0.0	No Staining	No Odor	Yes	Lab	<b>Groundwater Recovery</b>		
03-25-2025 13:55	FL01-14@3'	0.0	No Staining	No Odor	Yes	Grab	<b>Date</b>	<b>BBLs</b>	
03-25-2025 13:56	FL02-15@3'	0.0	No Staining	No Odor	Yes	Grab			
03-25-2025 13:57	FL03-09@3'	0.0	No Staining	No Odor	Yes	Grab			
03-25-2025 14:08	FL01-15@3'	0.0	No Staining	No Odor	Yes	Lab			
03-25-2025 14:09	FL02-16@3'	0.0	No Staining	No Odor	Yes	Lab			
03-25-2025 14:10	FL03-10@3'	0.0	No Staining	No Odor	Yes	Lab			
03-26-2025 09:57	FL01-16@3'	0.0	No Staining	No Odor	Yes	Grab			
03-26-2025 09:58	FL02-17@3'	0.1	No Staining	No Odor	Yes	Grab			
03-26-2025 09:59	FL03-11@3'	0.0	No Staining	No Odor	Yes	Grab			
03-26-2025 10:13	FL01-17@3'	0.0	No Staining	No Odor	Yes	Grab			
03-26-2025 10:14	FL02-18@3'	0.0	No Staining	No Odor	Yes	Grab			
03-26-2025 10:15	FL03-12@3'	0.0	No Staining	No Odor	Yes	Grab			
03-26-2025 10:24	FL01-18@3'	0.0	No Staining	No Odor	Yes	Grab			
03-26-2025 10:25	FL02-19@3'	0.0	No Staining	No Odor	Yes	Grab			
03-26-2025 10:26	FL03-13@3'	0.0	No Staining	No Odor	Yes	Grab			
03-26-2025 10:42	FL01-19@3'	0.0	No Staining	No Odor	Yes	Grab	<b>Total Removed</b>	0	
03-26-2025 10:43	FL02-20@3'	0.0	No Staining	No Odor	Yes	Grab	<b>Disposal Facility:</b>		



# Chevron Rockies Business Unit

## Field Qualitative Criteria for ECMC Reporting Associated with the Discovery of Potentially Impacted Material

If answered **Yes** to any of the questions listed below, this may suggest the presence of potentially impacted materials as outlined in ECMC Rule 912. Out of an abundance of caution, a “Yes” response will be reported to the ECMC within 24 hours after discovery, regardless of laboratory results. **Immediately notify the RBU Remediation Team.** Include a copy of this Field Qualitative Spill Criteria Checklist in the field Report.

Please answer the following questions when on-site:

1. Is there visible petroleum hydrocarbon staining in the soil? No\_\_\_\_\_
2. Does the soil sample from the stained area have a petroleum odor? No\_\_\_\_\_
3. Is there a petroleum hydrocarbon sheen on the nearby surface water? No\_\_\_\_\_
4. Does there appear to be a sheen of the surface of accumulated groundwater or seeps within the excavation indicative of petroleum? No\_\_\_\_\_
5. Is stained soil in contact with groundwater? No\_\_\_\_\_

Please Include relevant photos of the site conditions for items 1-5.

Location name: KY BLUE H25-15

Please Circle Facility Type: Flowline





Date: 3/20/2025

### GENERAL OBSERVATION FORM

Site Area/AOC: KY BLUE H25-15 Client: Noble

Daily Forecast/Weather: Clear, 43 Personnel: C. Kenigsberg, W. Runge



Task/Location Description: Flowline decommissioning



Time	Description
09:25	Arrived onsite
09:37	Completed JSA
12:30	Began sampling
	KY BLUE H25-24 (FL03) encountered and common trenched at bell hole with samples FL02-07 and FL01-06
	FL03 was completely ABIP to separator
	FL01 and FL02 were completely removed to FL01-07 and FL02-08
	Backgrounds will be collected 3/21/25
16:00	Departed site
	3/21/25 CK, WR
09:01	Arrived onsite
09:12	Completed JSA
10:13	SWA called
	3/25/25 WR
08:20	Arrived on site, completed JSA
11:35	Began sampling
13:22	FL01, 02 & 03 were ABIP from 12-13, 13-14, 07-08 respectively
13:22	Created new field form named KY BLUE H25-15 for new photos past FL03-07@3'
15:18	Left site
	3/26/25
09:20	Arrived on site completed JSA
10:03	Started sampling activities
	Collected backgrounds



Need another General Observation Form? \_\_\_\_\_



<b>Equipment ID:</b> FL01-01 @3'		<b>Equipment Type:</b>		<b>Equipment ID:</b> FL01-02 @3'		<b>Equipment Type:</b>	
<b>Material:</b>	<b>Volume:</b>	<b>Contents:</b>		<b>Material:</b>	<b>Volume:</b>	<b>Contents:</b>	
<b>Notes/Conditions:</b> Facing north				<b>Notes/Conditions:</b> Facing north			

									
						<b>Equipment ID:</b> FL02-01 @ 3' <b>Equipment Type:</b>			<b>Equipment ID:</b> FL02-02 @ 3' <b>Equipment Type:</b>
<b>Material:</b>		<b>Volume:</b>	<b>Contents:</b>		<b>Material:</b>		<b>Volume:</b>	<b>Contents:</b>	
<b>Notes/Conditions:</b> Facing north					<b>Notes/Conditions:</b> Facing south				

					
<b>Material:</b>	<b>Volume:</b>	<b>Contents:</b>	<b>Material:</b>	<b>Volume:</b>	<b>Contents:</b>
<b>Notes/Conditions:</b>			<b>Notes/Conditions:</b>		

					
<b>Equipment ID:</b> FL02-04@3'9		<b>Equipment Type:</b>	<b>Equipment ID:</b> FL01-04@3'		<b>Equipment Type:</b>
<b>Material:</b>	<b>Volume:</b>	<b>Contents:</b>	<b>Material:</b>	<b>Volume:</b>	<b>Contents:</b>
<b>Notes/Conditions:</b>			<b>Notes/Conditions:</b> Facing north		



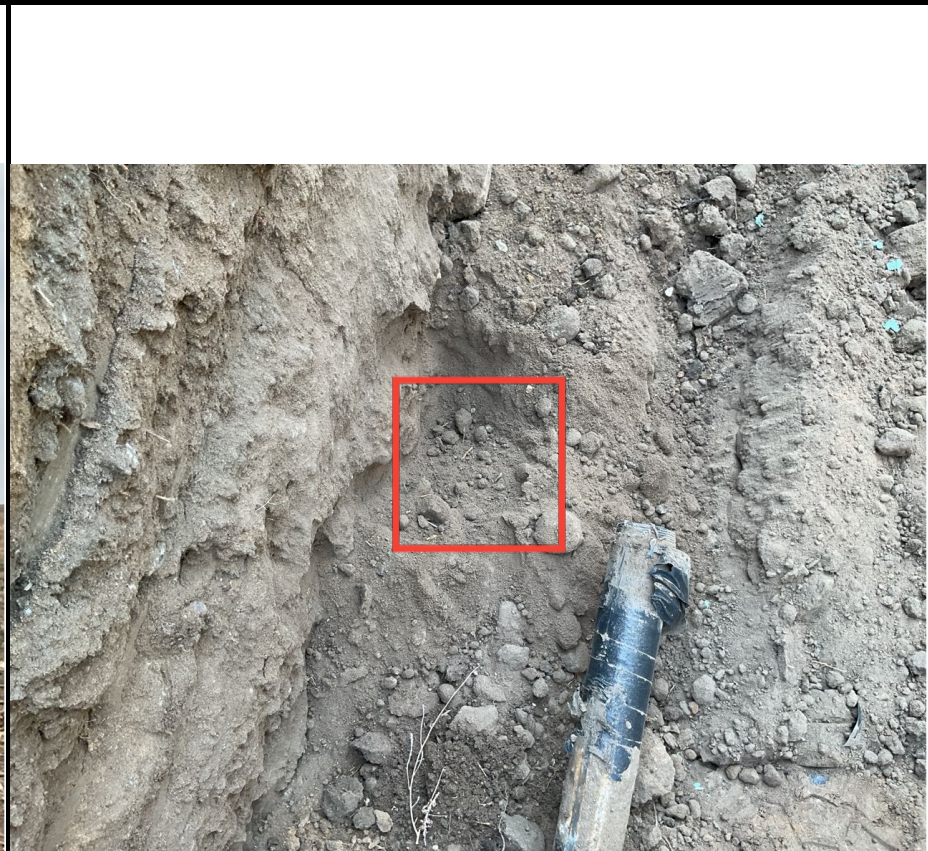
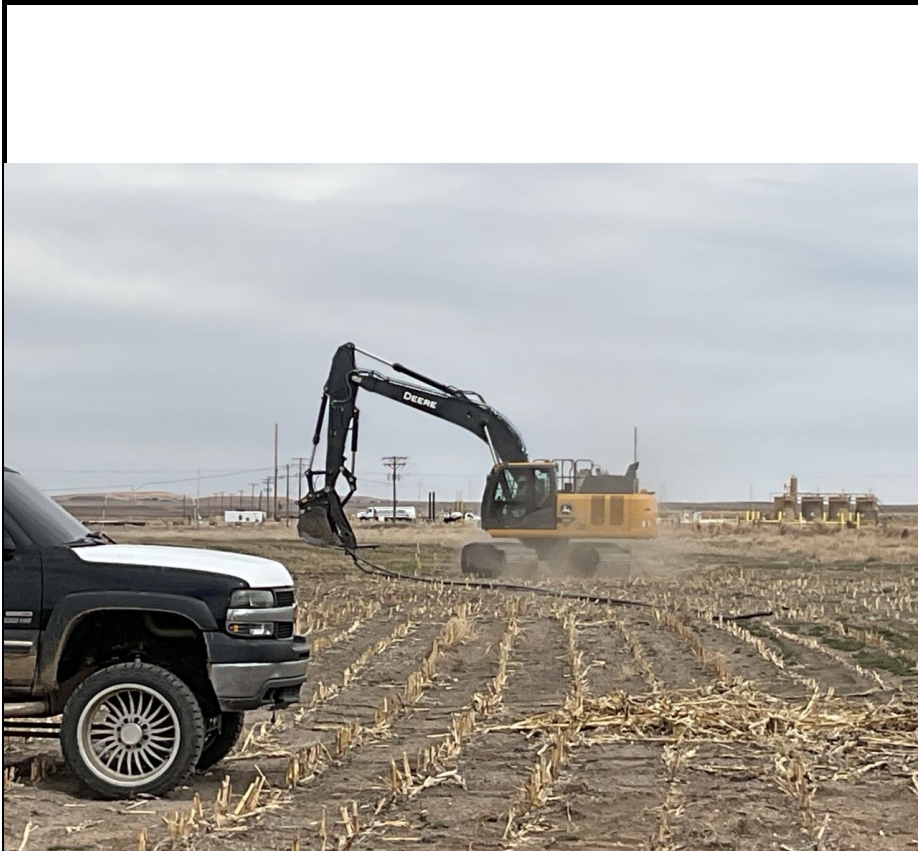
<b>Equipment ID:</b> FL02-05 @3'		<b>Equipment Type:</b>		<b>Equipment ID:</b> FL02R-S@3'		<b>Equipment Type:</b>	
<b>Material:</b>	<b>Volume:</b>	<b>Contents:</b>		<b>Material:</b>	<b>Volume:</b>	<b>Contents:</b>	
<b>Notes/Conditions:</b> Facing south				<b>Notes/Conditions:</b> Facing west			



<b>Equipment ID:</b> FL03R-S@3'		<b>Equipment Type:</b>		<b>Equipment ID:</b> FL02-06@3'		<b>Equipment Type:</b>	
<b>Material:</b>	<b>Volume:</b>	<b>Contents:</b>		<b>Material:</b>	<b>Volume:</b>	<b>Contents:</b>	
<b>Notes/Conditions:</b> Facing west				<b>Notes/Conditions:</b> Facing west			

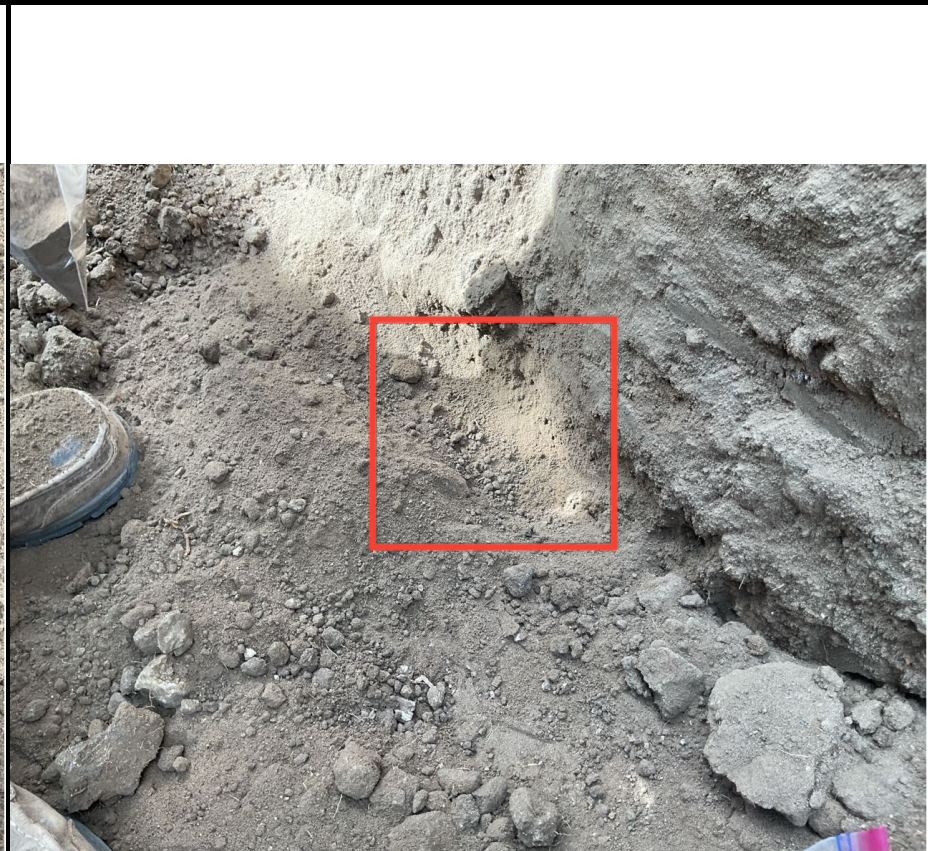
					
<b>Material:</b>	<b>Volume:</b>	<b>Contents:</b>	<b>Material:</b>	<b>Volume:</b>	<b>Contents:</b>
<b>Notes/Conditions:</b> Facing west			<b>Notes/Conditions:</b> Facing west		

					
<b>Equipment ID:</b> FL01-06 @3'		<b>Equipment Type:</b>	<b>Equipment ID:</b> FL02-07 @3'		<b>Equipment Type:</b>
<b>Material:</b>	<b>Volume:</b>	<b>Contents:</b>	<b>Material:</b>	<b>Volume:</b>	<b>Contents:</b>
<b>Notes/Conditions:</b> Facing west			<b>Notes/Conditions:</b> Facing west		



<b>Equipment ID:</b> FL01 and FL02 Flowlines		<b>Equipment Type:</b>	
<b>Material:</b>	<b>Volume:</b>	<b>Contents:</b>	
<b>Notes/Conditions:</b> Facing East			

<b>Equipment ID:</b> FL01-07@3'		<b>Equipment Type:</b>	
<b>Material:</b>	<b>Volume:</b>	<b>Contents:</b>	
<b>Notes/Conditions:</b> Facing west			



<b>Equipment ID:</b> FL02-08 @3'		<b>Equipment Type:</b>	
<b>Material:</b>	<b>Volume:</b>	<b>Contents:</b>	
<b>Notes/Conditions:</b> Facing west			



<b>Equipment ID:</b> FL03-02		<b>Equipment Type:</b>	
<b>Material:</b>	<b>Volume:</b>	<b>Contents:</b>	
<b>Notes/Conditions:</b> Facing west			





<b>Equipment ID:</b> FL03-03 @ 3'		<b>Equipment Type:</b>		<b>Equipment ID:</b> FL01-08 @ 3'		<b>Equipment Type:</b>	
<b>Material:</b>	<b>Volume:</b>	<b>Contents:</b>		<b>Material:</b>	<b>Volume:</b>	<b>Contents:</b>	
<b>Notes/Conditions:</b> Facing west				<b>Notes/Conditions:</b> Facing west			

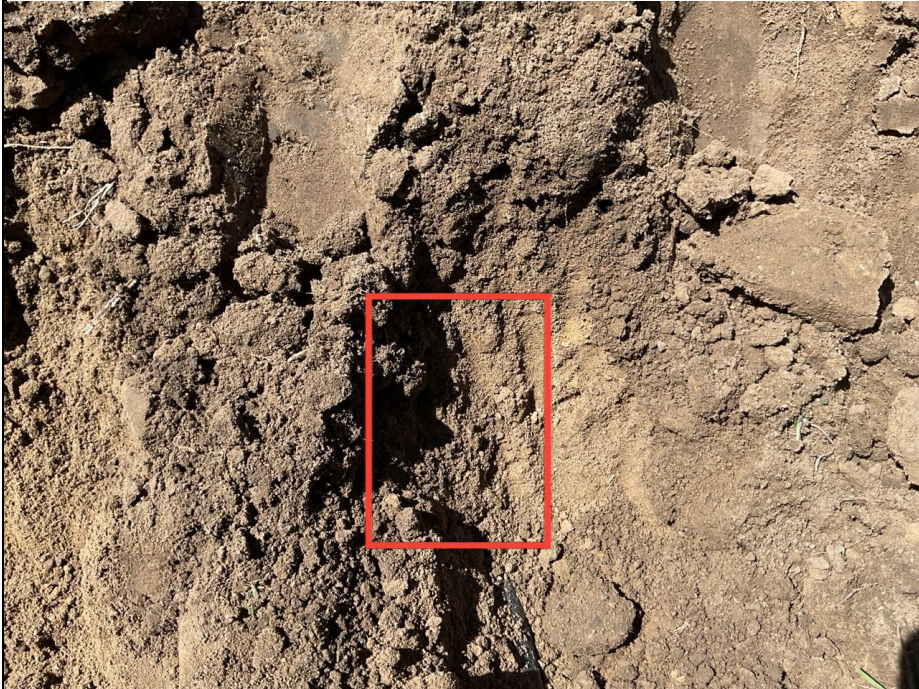





<b>Equipment ID:</b> FL02-09@3'		<b>Equipment Type:</b>		<b>Equipment ID:</b> FL01-09@3'		<b>Equipment Type:</b>	
<b>Material:</b>	<b>Volume:</b>	<b>Contents:</b>		<b>Material:</b>	<b>Volume:</b>	<b>Contents:</b>	
<b>Notes/Conditions:</b>				<b>Notes/Conditions:</b> Facing East			

					
<b>Material:</b>	<b>Volume:</b>	<b>Contents:</b>	<b>Material:</b>	<b>Volume:</b>	<b>Contents:</b>
<b>Notes/Conditions:</b> Facing East			<b>Notes/Conditions:</b> Facing East		

					
<b>Material:</b>	<b>Volume:</b>	<b>Contents:</b>	<b>Material:</b>	<b>Volume:</b>	<b>Contents:</b>
<b>Notes/Conditions:</b> Facing west			<b>Notes/Conditions:</b> Facing west		

					
<b>Material:</b>	<b>Volume:</b>	<b>Contents:</b>	<b>Material:</b>	<b>Volume:</b>	<b>Contents:</b>
<b>Notes/Conditions:</b> Facing west			<b>Notes/Conditions:</b> Facing west		

					
<b>Equipment ID:</b> FL02-12 @ 3'		<b>Equipment Type:</b>	<b>Equipment ID:</b> FL03-06 @ 3'		<b>Equipment Type:</b>
<b>Material:</b>	<b>Volume:</b>	<b>Contents:</b>	<b>Material:</b>	<b>Volume:</b>	<b>Contents:</b>
<b>Notes/Conditions:</b> Facing west			<b>Notes/Conditions:</b> Facing west		

					
<b>Equipment ID:</b> FL01-12@3'		<b>Equipment Type:</b>	<b>Equipment ID:</b> FL02-13@3'		<b>Equipment Type:</b>
<b>Material:</b>	<b>Volume:</b>	<b>Contents:</b>	<b>Material:</b>	<b>Volume:</b>	<b>Contents:</b>
<b>Notes/Conditions:</b> Facing East			<b>Notes/Conditions:</b> Facing East		



					
<b>Material:</b>	<b>Volume:</b>	<b>Contents:</b>	<b>Material:</b>	<b>Volume:</b>	<b>Contents:</b>
<b>Notes/Conditions:</b>			<b>Notes/Conditions:</b>		

					
<b>Material:</b>	<b>Volume:</b>	<b>Contents:</b>	<b>Material:</b>	<b>Volume:</b>	<b>Contents:</b>
<b>Notes/Conditions:</b> Facing west			<b>Notes/Conditions:</b> Facing west		

					
<b>Material:</b>	<b>Volume:</b>	<b>Contents:</b>	<b>Material:</b>	<b>Volume:</b>	<b>Contents:</b>
<b>Notes/Conditions:</b> Facing west			<b>Notes/Conditions:</b> Facing west		





<b>Equipment ID:</b> FL02-16 @3'		<b>Equipment Type:</b>		<b>Equipment ID:</b> FL03-10 @3'		<b>Equipment Type:</b>	
<b>Material:</b>	<b>Volume:</b>	<b>Contents:</b>		<b>Material:</b>	<b>Volume:</b>	<b>Contents:</b>	
<b>Notes/Conditions:</b> Facing west				<b>Notes/Conditions:</b> Facing west			



<b>Equipment ID:</b>		<b>Equipment Type:</b>	
<b>Material:</b>	<b>Volume:</b>	<b>Contents:</b>	
<b>Notes/Conditions:</b> Pulled Flowlines			

<b>Equipment ID:</b> FL01-16@3'		<b>Equipment Type:</b>	
<b>Material:</b>	<b>Volume:</b>	<b>Contents:</b>	
<b>Notes/Conditions:</b> Facing west			

					
<b>Material:</b>	<b>Volume:</b>	<b>Contents:</b>	<b>Material:</b>	<b>Volume:</b>	<b>Contents:</b>
<b>Notes/Conditions:</b> Facing west			<b>Notes/Conditions:</b>		



<b>Equipment ID:</b> FL02-19@3'		<b>Equipment Type:</b>		<b>Equipment ID:</b> FL01-18@3'		<b>Equipment Type:</b>	
<b>Material:</b>	<b>Volume:</b>	<b>Contents:</b>		<b>Material:</b>	<b>Volume:</b>	<b>Contents:</b>	
<b>Notes/Conditions:</b> Facing East				<b>Notes/Conditions:</b> Facing north			



					
<b>Equipment ID:</b> FL03-14 @ 3'		<b>Equipment Type:</b>	<b>Equipment ID:</b> FL02-20 @ 3'		<b>Equipment Type:</b>
<b>Material:</b>	<b>Volume:</b>	<b>Contents:</b>	<b>Material:</b>	<b>Volume:</b>	<b>Contents:</b>
<b>Notes/Conditions:</b> Facing west			<b>Notes/Conditions:</b> Facing west		



<b>Equipment ID:</b> BKG01		<b>Equipment Type:</b>		<b>Equipment ID:</b> BKG02		<b>Equipment Type:</b>	
<b>Material:</b>	<b>Volume:</b>	<b>Contents:</b>		<b>Material:</b>	<b>Volume:</b>	<b>Contents:</b>	
<b>Notes/Conditions:</b> Facing north				<b>Notes/Conditions:</b> Facing south			