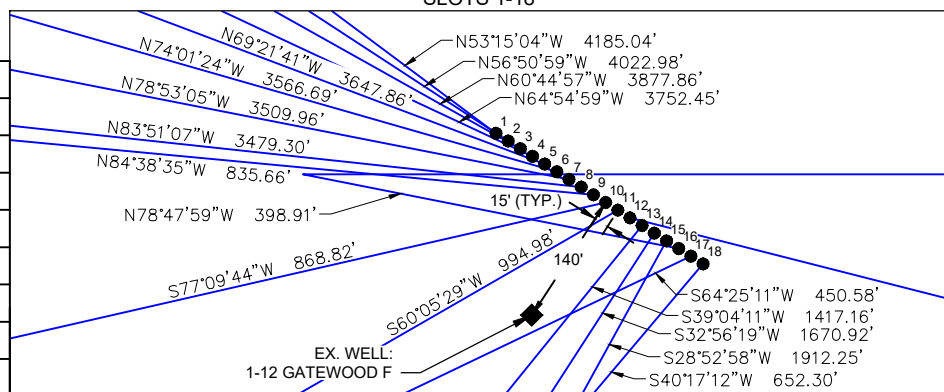
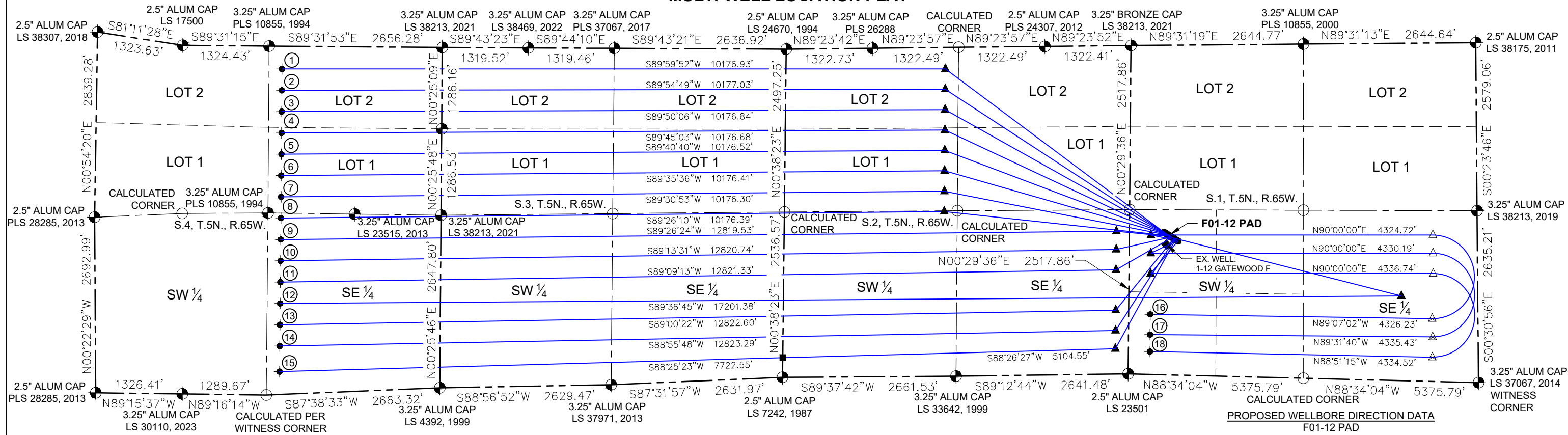
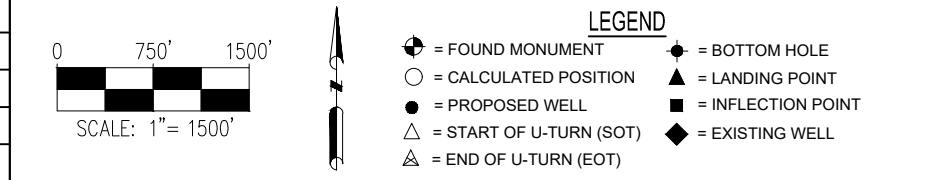


## F01-12 PAD MULTI-WELL LOCATION PLAT



SLOT	WELL NAME	SURFACE HOLE LOCATION							TOP OF PRODUCTIVE ZONE		INFLECTION POINT		START OF U-TURN (SOT)		END OF U-TURN (EOT)		BOTTOM HOLE LOCATION	
		LATITUDE	LONGITUDE	F S L	F W L	QTR.-QTR.	ELEVATION	PDOP	F N/S L	F E/W L	F S L	F W L	F S L	F E L	F S L	F E L	F N/S L	F E/W L
1	Blackhawk F04-685	40.427263	-104.619006	2185'	531'	NWSW	4637'	1.3	330' FNL (Sec. 2)	2446' FWL (Sec. 2)	-	-	-	-	-	-	350' FNL (Sec. 4)	2456' FEL (Sec. 4)
2	Blackhawk F04-680	40.427241	-104.618961	2177'	543'	NWSW	4637'	1.3	642' FNL (Sec. 2)	2447' FWL (Sec. 2)	-	-	-	-	-	-	677' FNL (Sec. 4)	2456' FEL (Sec. 4)
3	Blackhawk F04-675	40.427219	-104.618916	2169'	556'	NWSW	4637'	1.3	955' FNL (Sec. 2)	2448' FWL (Sec. 2)	-	-	-	-	-	-	1004' FNL (Sec. 4)	2456' FEL (Sec. 4)
4	Blackhawk F04-670	40.427197	-104.618870	2162'	569'	NWSW	4636'	1.3	1267' FNL (Sec. 2)	2449' FWL (Sec. 2)	-	-	-	-	-	-	1331' FNL (Sec. 4)	2456' FEL (Sec. 4)
5	Blackhawk F04-665	40.427174	-104.618825	2154'	582'	NWSW	4636'	1.3	1580' FNL (Sec. 2)	2450' FWL (Sec. 2)	-	-	-	-	-	-	1657' FNL (Sec. 4)	2456' FEL (Sec. 4)
6	Blackhawk F04-660	40.427152	-104.618780	2146'	594'	NWSW	4636'	1.3	1892' FNL (Sec. 2)	2451' FWL (Sec. 2)	-	-	-	-	-	-	1984' FNL (Sec. 4)	2455' FEL (Sec. 4)
7	Blackhawk F04-656	40.427130	-104.618735	2139'	607'	NWSW	4636'	1.3	2205' FNL (Sec. 2)	2452' FWL (Sec. 2)	-	-	-	-	-	-	2311' FNL (Sec. 4)	2455' FEL (Sec. 4)
8	Blackhawk F04-651	40.427107	-104.618689	2131'	620'	NWSW	4636'	1.3	2517' FNL (Sec. 2)	2453' FWL (Sec. 2)	-	-	-	-	-	-	2637' FNL (Sec. 4)	2455' FEL (Sec. 4)
9	Blackhawk F04-644	40.427085	-104.618644	2123'	633'	NWSW	4636'	1.3	2188' FSL (Sec. 2)	200' FEL (Sec. 2)	-	-	-	-	-	-	2374' FSL (Sec. 4)	2456' FEL (Sec. 4)
10	Blackhawk F04-640	40.427063	-104.618599	2116'	645'	NWSW	4636'	1.4	1909' FSL (Sec. 2)	200' FEL (Sec. 2)	-	-	-	-	-	-	2047' FSL (Sec. 4)	2456' FEL (Sec. 4)
11	Blackhawk F04-635	40.427040	-104.618553	2108'	658'	NWSW	4636'	1.4	1598' FSL (Sec. 2)	200' FEL (Sec. 2)	-	-	-	-	-	-	1721' FSL (Sec. 4)	2457' FEL (Sec. 4)
12	Blackhawk F04-630	40.427018	-104.618508	2100'	671'	NWSW	4636'	1.4	1300' FSL (Sec. 1)	1170' FEL (Sec. 1)	-	-	-	-	-	-	1394' FSL (Sec. 4)	2458' FEL (Sec. 4)
13	Blackhawk F04-625	40.426996	-104.618463	2093'	684'	NWSW	4636'	1.4	978' FSL (Sec. 2)	200' FEL (Sec. 2)	-	-	-	-	-	-	1068' FSL (Sec. 4)	2458' FEL (Sec. 4)
14	Blackhawk F04-620	40.426974	-104.618417	2085'	696'	NWSW	4636'	1.4	668' FSL (Sec. 2)	200' FEL (Sec. 2)	-	-	-	-	-	-	742' FSL (Sec. 4)	2459' FEL (Sec. 4)
15	Blackhawk F04-615	40.426951	-104.618372	2077'	709'	NWSW	4636'	1.4	388' FSL (Sec. 2)	200' FEL (Sec. 2)	300' (Sec. 2)	0' (Sec. 2)	-	-	-	-	350' FSL (Sec. 4)	2460' FEL (Sec. 4)
16	Blackhawk F01-1NU	40.426929	-104.618327	2070'	722'	NWSW	4636'	1.4	2137' FSL (Sec. 1)	330' FWL (Sec. 1)	-	-	2245' (Sec. 1)	681' (Sec. 1)	962' (Sec. 1)	702' (Sec. 1)	921' FSL (Sec. 1)	330' FWL (Sec. 1)
17	Blackhawk F01-2NU	40.426907	-104.618282	2062'	735'	NWSW	4636'	1.3	1857' FSL (Sec. 1)	330' FWL (Sec. 1)	-	-	1965' (Sec. 1)	680' (Sec. 1)	683' (Sec. 1)	697' (Sec. 1)	610' FSL (Sec. 1)	330' FWL (Sec. 1)
18	Blackhawk F01-3NU	40.426884	-104.618236	2054'	747'	NWSW	4635'	1.3	1546' FSL (Sec. 1)	330' FWL (Sec. 1)	-	-	1655' (Sec. 1)	679' (Sec. 1)	372' (Sec. 1)	704' (Sec. 1)	350' FSL (Sec. 1)	330' FWL (Sec. 1)



**NOTES:**

- ALL BEARINGS ARE GRID BEARINGS OF THE COLORADO STATE PLANE COORDINATE SYSTEM, NORTH ZONE, NORTH AMERICAN DATUM 1983/2011. THE LINEAL DIMENSIONS AS SHOWN HEREIN ARE GRID DISTANCES BASED UPON THE "U.S. SURVEY FOOT." TO GET GROUND DISTANCES MULTIPLY SHOWN DISTANCE BY 1.00025857.
- DISTANCES ARE MEASURED AT 90° FROM SECTION LINE OF THE SIXTH PRINCIPAL MERIDIAN, COUNTY OF WELD, STATE OF COLORADO.
- GROUND ELEVATIONS ARE BASED ON AN OBSERVED GPS ELEVATION (NAVD 1988 DATUM).
- SURFACE USE: "IRRIGATED CROP LAND"
- INSTRUMENT OPERATOR: LOGAN THIELBERT
- THIS MAP DOES NOT REPRESENT A BOUNDARY SURVEY.

	FIELD DATE: <b>12-19-23</b>	WELL NAME: <b>F01-12 PAD</b>	
	DRAWING DATE: <b>01-16-25</b>	SURFACE LOCATION: <b>NW1/4 SW1/4 SEC. 1, T5N, R65W, 6TH P.M. WELD COUNTY, COLORADO</b>	
BY: <b>TRP</b>	CHECKED: <b>NJH</b>		