

**LEGEND**

- WELL HEAD LOCATION
- ▲ PID READING LOCATION
- ⊗ SOIL SAMPLE LOCATION
- ABOVE GROUND STORAGE TANK
- FORMER FACILITY
- EXCAVATED AREA
- FORMER FLOW LINE
- FENCE LINE
- CONTAINMENT BERM
- CONTAINMENT WALL
- EXTENT OF EXCAVATION

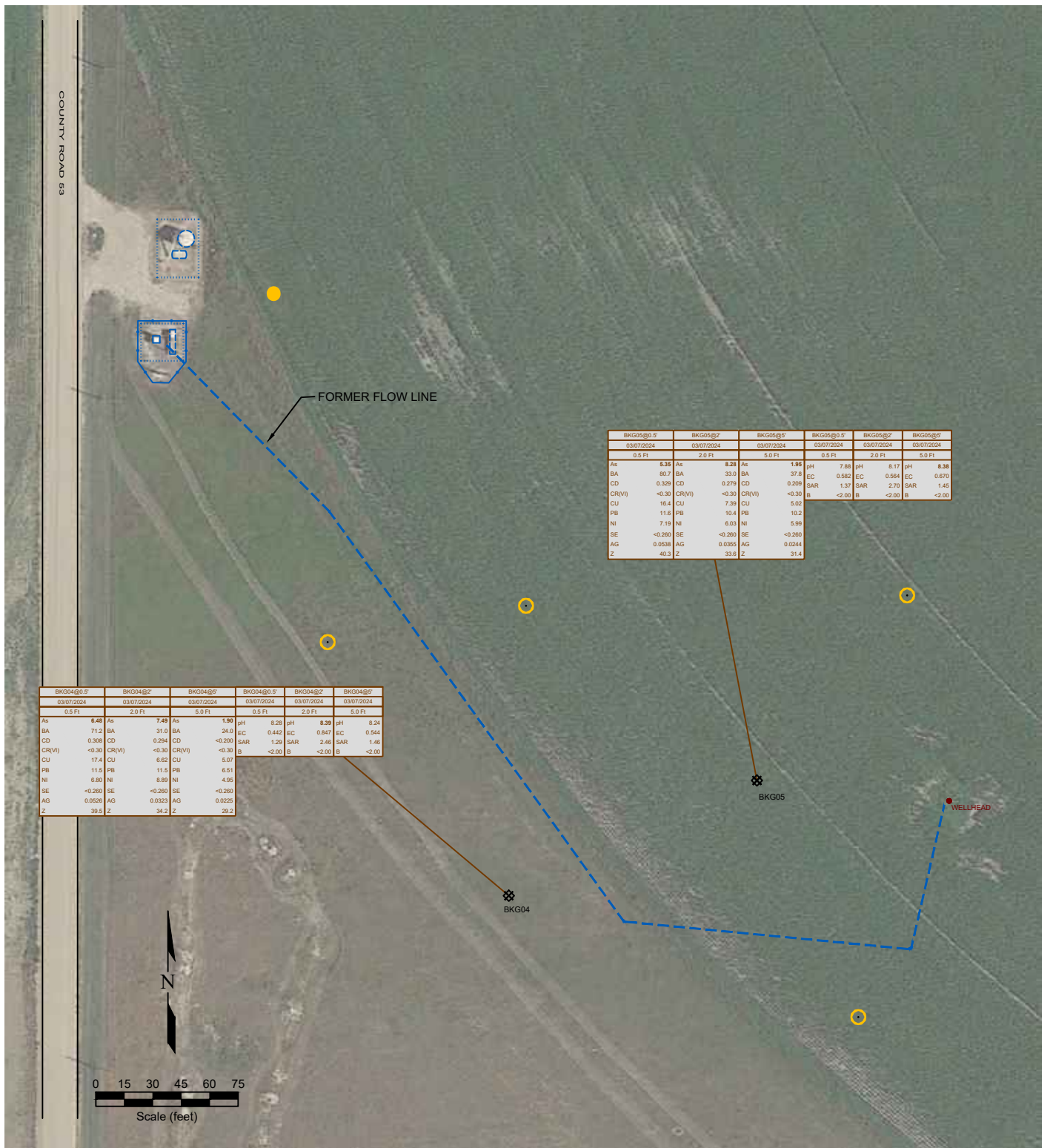
SAMPLE	SAMPLE ID	SAMPLE	SAMPLE ID
DATE	DATE SAMPLED	DATE	DATE SAMPLED
DEPTH	DEPTH (ft)	DEPTH	DEPTH (ft)
As	<0.01	ARSENIC (mg/kg)	
BA	<0.01	BARIUM (mg/kg)	
CD	<0.01	CADMIUM (mg/kg)	
CR(V)	<0.01	CHROMIUM (mg/kg)	
CU	<0.01	COPPER (mg/kg)	
PB	<0.01	LEAD (mg/kg)	
Ni	<0.01	NICKEL (mg/kg)	
SE	<0.5	SELENIUM (mg/kg)	
AG	<0.01	SILVER (mg/kg)	
Z	<0.01	ZINC (mg/kg)	

**Figure 2**  
**PROPOSED SITE INVESTIGATION PLAN**

**Noble Energy, Inc. ~ Howard USX A 9-13**  
SWSW Sec. 9, T6N, R64W, 6th PM  
Weld County, Colorado  
40.495090°, -104.562070°

Project No. <b>C024-056</b>	API # <b>05-123-24494</b>	Facility #
Date <b>6/11/25</b>	Remediation # <b>32969</b>	Filename <b>24056QFL1</b>





**LEGEND**

- WELL HEAD LOCATION
- ABOVE GROUND STORAGE TANK
- ⊗ SOIL SAMPLE LOCATION
- Proposed Additional Local Background Samples
- FORMER FLOW LINE
- FENCE LINE
- ||||| CONTAINMENT BERM
- CONTAINMENT WALL

SAMPLE NAME	SAMPLE ID	DATE SAMPLED	DEPTH (ft)	SAMPLE NAME	SAMPLE ID	DATE SAMPLED	DEPTH (ft)
As	<0.01	ARSENIC (mg/kg)		pH	<0.0	pH (pH units)	
BA	<0.01	BARIUM (mg/kg)		EC	7.05	EC (microhm/cm)	
CD	<0.01	CADMIUM (mg/kg)		SAR	<1	SAR (units)	
CR(VI)	<0.05	CHROMIUM (mg/kg)		B	<4	BORON (mg/L)	
CU	<0.01	COPPER (mg/kg)					
PB	<0.05	LEAD (mg/kg)					
NI	<0.05	NICKEL (mg/kg)					
SE	<0.4	SELENIUM (mg/kg)					
AG	<0.05	SILVER (mg/kg)					
Z	<0.05	ZINC (mg/kg)					

**Figure 3**  
**PROPOSED ADDITIONAL BACKGROUND SAMPLE LOCATIONS**

**Noble Energy, Inc. ~ Howard USX A 9-13**  
SWSW Sec. 9, T6N, R64W, 6th PM  
Weld County, Colorado  
40.495090°, -104.562070°

Project No. <b>C024-056</b>	API # <b>05-123-24494</b>	Facility #
Date <b>3/18/25</b>	Remediation # <b>32969</b>	Filename <b>24056QFL</b>