



Equipment ID: FL01R-S@2.5'		Equipment Type:		Equipment ID: FL01R-W@3'		Equipment Type:	
Material:	Volume:	Contents:		Material:	Volume:	Contents:	
Notes/Conditions:				Notes/Conditions:			



Equipment ID: FL01-01@3'		Equipment Type:		Equipment ID: FL01-02@3'		Equipment Type:	
Material:	Volume:	Contents:		Material:	Volume:	Contents:	
Notes/Conditions:				Notes/Conditions:			



Equipment ID: FL01-03@3'		Equipment Type:	
Material:	Volume:	Contents:	
Notes/Conditions:			

Equipment ID: FL01-04@2.5'		Equipment Type:	
Material:	Volume:	Contents:	
Notes/Conditions:			



Equipment ID: FL01-05@2.5'		Equipment Type:		Equipment ID: FL01-06@2.5'		Equipment Type:	
Material:	Volume:	Contents:		Material:	Volume:	Contents:	
Notes/Conditions:				Notes/Conditions:			

TABLE 1
FIELD DATA SUMMARY TABLE
NOBLE ENERGY INC. - 100322
TODD 20-02, WELD COUNTY, COLORADO
REM # 34774

Sample ID	Sample Date	Depth (ft. bgs)	GPS Data Latitude/Longitude		PDOP Value	VOC Concentration (ppm)
FL01R-S@2.5'	8/22/2024	2.5	40.304747	-104.574080	0.8	0.2
FL01R-W@3'	8/22/2024	3	40.302709	-104.571643	NC	0.2
FL01-01@3'	8/22/2024	3	40.302897	-104.571827	1.0	0.3
FL01-02@3'	8/22/2024	3	40.303147	-104.572111	1.0	0.1
FL01-03@3'	8/22/2024	3	40.303649	-104.572703	0.8	0.3
FL01-04@2.5'	8/22/2024	2.5	40.303890	-104.573066	0.9	0.3
FL01-05@2.5'	8/22/2024	2.5	40.304141	-104.573449	0.8	0.3
FL01-06@2.5'	8/22/2024	2.5	40.304368	-104.573776	0.8	0.2

Notes:

1. Global Positioning System (GPS) data is provided in decimal degrees using North American Datum (NAD) 83 UTM Zone 13 North.

2. Volatile organic compound (VOC) concentrations are measured in the field using a photoionization detector (PID).

PDOP = Position Dilution of Precision

ppm = Parts per million

ft. = Feet

bgs = Below ground surface

NC = Data not collected

TABLE 2
SUMMARY OF VOLATILE ORGANIC SOIL CHEMISTRY DATA
NOBLE ENERGY INC. - 100322
TODD 20-02, WELD COUNTY, COLORADO
REM # 34774

Sample ID	Sample Date	Depth (ft. bgs)	Benzene (mg/kg)	Toluene (mg/kg)	Ethyl-Benzene (mg/kg)	Xylenes (mg/kg)	1,2,4-Trimethyl-Benzene (mg/kg)	1,3,5-Trimethyl-Benzene (mg/kg)	Naphthalene (mg/kg)	TPH (mg/kg)	TPH GRO (mg/kg)	TPH DRO (mg/kg)	TPH ORO (mg/kg)
ECMC Table 915-1 Limits (Residential SSL)			1.2	490	5.8	58	30	27	2	500	500**		
ECMC Table 915-1 Limits (Protection of Groundwater SSL)			0.0026	0.69	0.78	9.9	0.0081	0.0087	0.0038	500	500**		
FL01R-S@2.5'	8/22/2024	2.5	<0.0020	<0.0050	<0.0050	<0.010	<0.0050	<0.0050	<0.0038	<500	<0.50	<50	<50
FL01R-W@3'	8/22/2024	3	<0.0020	<0.0050	<0.0050	<0.010	<0.0050	<0.0050	<0.0038	<500	<0.50	<50	<50
FL01-02@3'	8/22/2024	3	<0.0020	<0.0050	<0.0050	<0.010	<0.0050	<0.0050	<0.0038	<500	<0.50	<50	<50
FL01-03@3'	8/22/2024	3	<0.0020	<0.0050	<0.0050	<0.010	<0.0050	<0.0050	<0.0038	<500	<0.50	<50	<50
FL01-06@2.5'	8/22/2024	2.5	<0.0020	<0.0050	<0.0050	<0.010	<0.0050	<0.0050	<0.0038	<500	<0.50	<50	<50

Notes:

1. **Bold** values exceed the ECMC Table 915-1 limit(s)
2. Pink & blue highlighted soil analytical values indicate an exceedance of the referenced soil screening level (SSL)
3. * Indicates laboratory minimum detection limit in excess of SSL
4. ** Summation of GRO+DRO+ORO must be less than 500 mg/kg

ECMC = Energy & Carbon Management Commission

(<) = Analytical result is less than the indicated laboratory reporting limit.

TPH-GRO = Total petroleum hydrocarbons - gasoline range organics

TPH-DRO = Total petroleum hydrocarbons - diesel range organics

TPH-ORO = Total petroleum hydrocarbons - oil range organics

mg/kg = Milligrams per kilogram

ft. = Feet

bgs = Below ground surface

TABLE 3
SUMMARY OF POLYCYCLIC AROMATIC HYDROCARBON SOIL CHEMISTRY DATA
NOBLE ENERGY INC. - 100322
TODD 20-02, WELD COUNTY, COLORADO
REM # 34774

Sample ID	Sample Date	Depth (ft. bgs)	Acenaphthene (mg/kg)	Anthracene (mg/kg)	Benzo (a) Anthracene (mg/kg)	Benzo (a) Pyrene (mg/kg)	Benzo (b) Fluoranthene (mg/kg)	Benzo (k) Fluoranthene (mg/kg)	Chrysene (mg/kg)	Dibenzo (a,h) Anthracene (mg/kg)	Fluoranthene (mg/kg)	Fluorene (mg/kg)	Indeno (1,2,3-cd) Pyrene (mg/kg)	Pyrene (mg/kg)	1-Methyl - Naphthalene (mg/kg)	2-Methyl - Naphthalene (mg/kg)
ECMC Table 915-1 Limits (Residential SSL)			360	1,800	1.1	0.11	1.1	11	110	0.11	240	240	1.1	180	18	24
ECMC Table 915-1 Limits (Protection of Groundwater SSL)			0.55	5.8	0.011	0.24	0.3	2.9	9	0.096	8.9	0.54	0.98	1.3	0.006	0.019
FL01R-S@2.5'	8/22/2024	2.5	<0.00500	<0.00500	<0.00500	<0.00500	<0.00500	<0.00500	<0.00500	<0.00500	<0.00500	<0.00500	<0.00500	<0.00500	<0.00500	<0.00500
FL01R-W@3'	8/22/2024	3	<0.00500	<0.00500	<0.00500	<0.00500	<0.00500	<0.00500	<0.00500	<0.00500	0.00938	<0.00500	<0.00500	0.00914	<0.00500	<0.00500
FL01-02@3'	8/22/2024	3	<0.00500	<0.00500	<0.00500	<0.00500	<0.00500	<0.00500	<0.00500	<0.00500	<0.00500	<0.00500	<0.00500	<0.00500	<0.00500	<0.00500
FL01-03@3'	8/22/2024	3	<0.00500	<0.00500	<0.00500	<0.00500	<0.00500	<0.00500	<0.00500	<0.00500	<0.00500	<0.00500	<0.00500	<0.00500	<0.00500	<0.00500
FL01-06@2.5'	8/22/2024	2.5	<0.00500	<0.00500	<0.00500	<0.00500	<0.00500	<0.00500	<0.00500	<0.00500	<0.00500	<0.00500	<0.00500	<0.00500	<0.00500	<0.00500

Notes:

1. **Bold** values exceed the ECMC Table 915-1 limit(s)
2. Pink & blue highlighted soil analytical values indicate an exceedance of the referenced soil screening level (SSL)
3. * Indicates laboratory minimum detection limit in excess of SSL

ECMC = Colorado Energy & Carbon Management Commission

(<) = Analytical result is less than the indicated laboratory reporting limit.

ft. = Feet

bgs = Below ground surface

mg/kg = Milligrams per kilogram

TABLE 4
SUMMARY OF SOIL SUITABILITY FOR RECLAMATION
NOBLE ENERGY INC. - 100322
TODD 20-02, WELD COUNTY, COLORADO
REM # 34774

Sample ID	Sample Date	Depth (ft. bgs)	pH (Standard Units)	EC (mmhos/cm)	SAR (Standard Units)	Boron (mg/L)
ECMC Table 915-1 Soil Suitability Limits			6 - 8.3	<4	<6	2
FL01R-S@2.5'	8/22/2024	2.5	8.22	0.257	0.124	<2.00
FL01R-W@3'	8/22/2024	3	7.79	1.19	0.545	<2.00
FL01-02@3'	8/22/2024	3	8.41	5.39	4.53	<2.00
FL01-03@3'	8/22/2024	3	7.81	5.69	5.45	<2.00
FL01-06@2.5'	8/22/2024	2.5	7.04	1.10	2.01	<2.00

Notes:

1. **Bold** faced values exceed the ECMC Table 915-1 limit(s), but are within 1.25x background concentrations.
2. **Bold** faced values exceed the ECMC Table 915-1 limit(s) above native background concentrations.
3. Brown highlighted soil analytical values indicate a regulatory exceedance.

ECMC = Colorado Energy & Carbon Management Commission

EC = Electrical conductivity

SAR = Sodium adsorption ratio

mmhos/cm = millimhos per centimeter

mg/L = milligram per liter

(<) = Analytical result is less than the indicated laboratory reporting limit.

ft. = Feet

bgs = Below ground surface

TABLE 5
SUMMARY OF METALS IN SOIL CHEMISTRY DATA
NOBLE ENERGY INC. - 100322
TODD 20-02, WELD COUNTY, COLORADO
REM # 34774

Sample ID	Sample Date	Depth (ft. bgs)	Arsenic (mg/kg)	Barium (mg/kg)	Cadmium (mg/kg)	Chromium (VI) ⁽⁴⁾ (mg/kg)	Copper (mg/kg)	Lead (mg/kg)	Nickel (mg/kg)	Selenium (mg/kg)	Silver (mg/kg)	Zinc (mg/kg)
ECMC Table 915-1 Limits (Residential SSL)			0.68	15,000	71	0.3	3,100	400	1,500	390	390	23,000
ECMC Table 915-1 Limits (Protection of Groundwater SSL)			0.29	82	0.38	0.00067	46	14	26	0.26	0.8	370
FL01R-S@2.5'	8/22/2024	2.5	2.31	51.1	<0.200	<0.30*	3.23	4.5	3.43	<0.260	<0.0200	13.0
FL01R-W@3'	8/22/2024	3	1.44	34.0	<0.200	<0.30*	4.00	8.38	2.79	<0.260	<0.0200	13.7
FL01-02@3'	8/22/2024	3	1.34	41.6	<0.200	<0.30*	3.41	3.94	2.70	<0.260	<0.0200	13.6
FL01-03@3'	8/22/2024	3	1.72	48.1	<0.200	<0.30*	3.34	4.33	3.49	<0.260	0.0252	12.3
FL01-06@2.5'	8/22/2024	2.5	1.50	44.2	<0.200	<0.30*	3.32	4.81	3.20	<0.260	0.0203	13.1

Notes:

- 1.** Bold faced values exceed the ECMC Table 915-1 limit(s), but are within 1.25x background concentrations.
- 2.** Bold faced values exceed the ECMC Table 915-1 limit(s) above native background concentrations.
- Red & blue highlighted soil analytical values indicate an exceedance of the referenced soil screening level (SSL)
- Compound falls within ECMC Table 915-1 Footnote 9.
- Non-detect background results accounted for in the highest background concentration by using the reporting limit.

ECMC = Energy & Carbon Management Commission

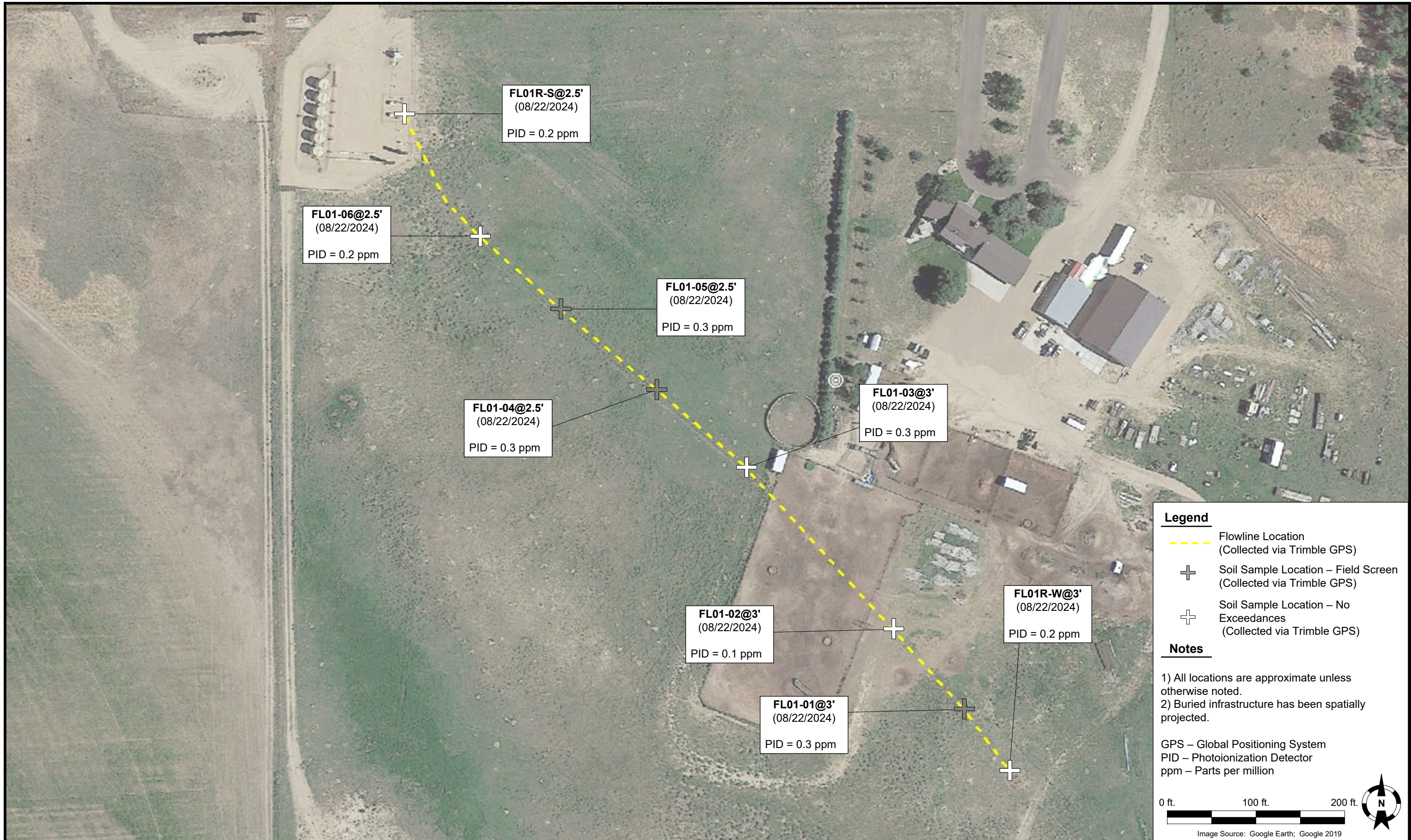
(<) = Analytical result is less than the indicated laboratory reporting limit.

mg/kg = Milligrams per kilogram

ft. = Feet

bgs = Below ground surface

* Indicates laboratory minimum detection limit in excess of SSL



DATE: 08/30/2024

DESIGNED BY: JW

DRAWN BY: L. Bohannon



TASMAN Tasman, Inc.
 6855 W 119th Avenue
 Broomfield, CO 80020

**Noble Energy, Inc. (100322) – DJ Basin
 Todd 20-02**
 NWNE, Section 20, Township 4 North, Range 64 West
 Weld County, Colorado

Flowline Closure & Soil
 Analytical Results Map
 (08/22/2024)

FIGURE
 1