

**LEGEND**

- WELLHEAD LOCATION
- ▲ PID READING LOCATION
- ABOVE GROUND STORAGE TANK
- FORMER FACILITY
- FLOW LINE
- - - - - FLOW LINE CONTAINMENT BERM

FL01	PID READING LOCATION IDENTIFICATION
PID 0.1	PHOTO IONIZATION DETECTION (ppm)

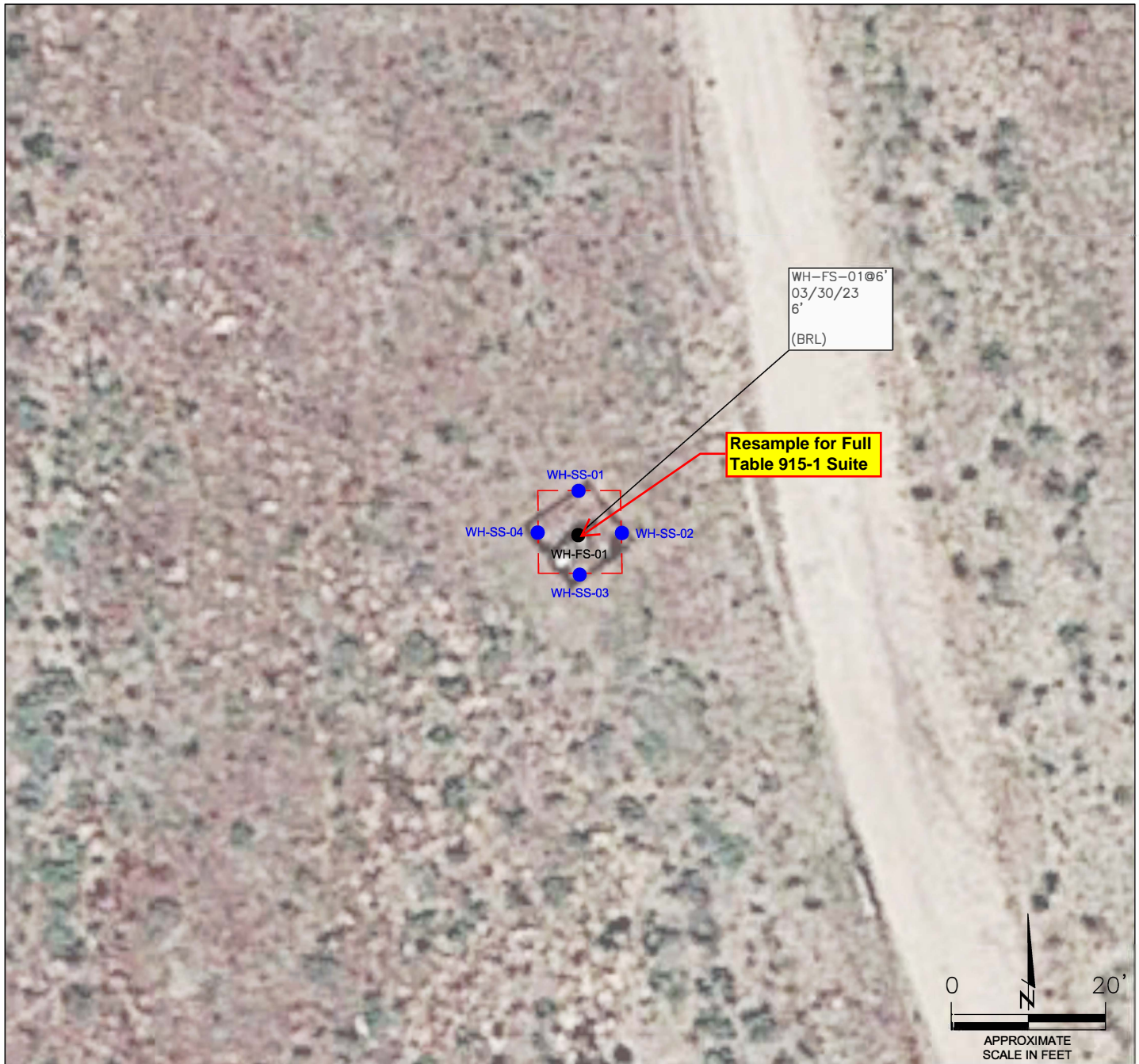
Figure 1

**SITE INVESTIGATION PLAN**

**NOBLE ENERGY INC - SPIKE STATE CC 30-20**  
 NESW Sec. 30, T4N, R63W, 6th PM  
 Weld County, Colorado  
 40.283074°, -104.484568°

Project # <b>CO23-156</b>	API # <b>05-123-25434</b>	Facility #
Date <b>08/29/2023</b>	Remediation # <b>26813</b>	Filename <b>23156T</b>

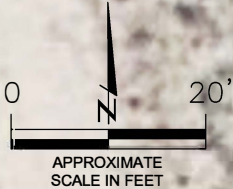




WH-FS-01@6'  
03/30/23  
6'  
(BRL)

**Resample for Full  
Table 915-1 Suite**

WH-SS-01  
WH-SS-02  
WH-SS-03  
WH-SS-04  
WH-FS-01



**LEGEND**

- WELLHEAD ASSESSMENT BOUNDARIES
- APPROXIMATE LOCATION OF SOIL SAMPLES FIELD SCREENED, ONLY, WITH PHOTOIONIZATION DETECTOR
- APPROXIMATE LOCATION OF SOIL SAMPLES SUBMITTED FOR LABORATORY ANALYSIS

**PARAMETERS**

**SAMPLE LOCATION**  
DATE  
DEPTH (FEET)  
B = BENZENE (mg/kg)  
T = TOLUENE (mg/kg)  
E = ETHYLBENZENE (mg/kg)  
X = TOTAL XYLENES (mg/kg)  
G = TPH-GRO (mg/kg)  
D = TPH-DRO (mg/kg)  
R = TPH-RRO (mg/kg)  
1,2,4-TMB = 1,2,4 TRIMETHYLBENZENE (mg/kg)  
1,3,5-TMB = 1,3,5 TRIMETHYLBENZENE (mg/kg)  
Brn= BORON (mg/L)  
EC = SPECIFIC CONDUCTANCE (mmhos/cm)  
SAR= SODIUM ADSORPTION RATIO  
pH = pH (pH UNITS)  
POLYCYCLIC AROMATIC HYDROCARBONS (PAHs) (mg/kg)

mg/kg = MILLIGRAMS PER KILOGRAM  
mg/L = MILLIGRAMS PER LITER  
mmhos/cm = MILLIHOS PER CENTIMETER

(BRL) = ALL VALUES BELOW REGULATORY LIMITS

TPH-GRO = TOTAL PETROLEUM HYDROCARBONS - GASOLINE RANGE ORGANICS  
TPH-DRO = TOTAL PETROLEUM HYDROCARBONS - DIESEL RANGE ORGANICS  
TPH-RRO = TOTAL PETROLEUM HYDROCARBONS - RESIDUAL RANGE ORGANICS

NOTES:  
VALUES PRESENTED IN **BOLD** EXCEED ECMC TABLE 915-1 REGULATORY LIMITS.

ECMC = ENERGY & CARBON MANAGEMENT COMMISSION

**SITE INVESTIGATION PLAN**  
SPIKE STATE CC #30-20  
CLOSURE ASSESSMENT  
40.283074 / -104.484568  
NE 1/4 SW 1/4 SEC.30 T4N R63W 6PM  
WELD COUNTY, COLORADO  
API # 05-123-25434  
REMEDIAION # 26813

FIGURE NO.  
2  
DRAWN BY:  
TC

**EAGLE**  
ENVIRONMENTAL  
CONSULTING, LLC  
8000 W 44th Ave, Wheat Ridge, CO 80033  
Ph: 303-433-0479 • F: 303-325-5449

