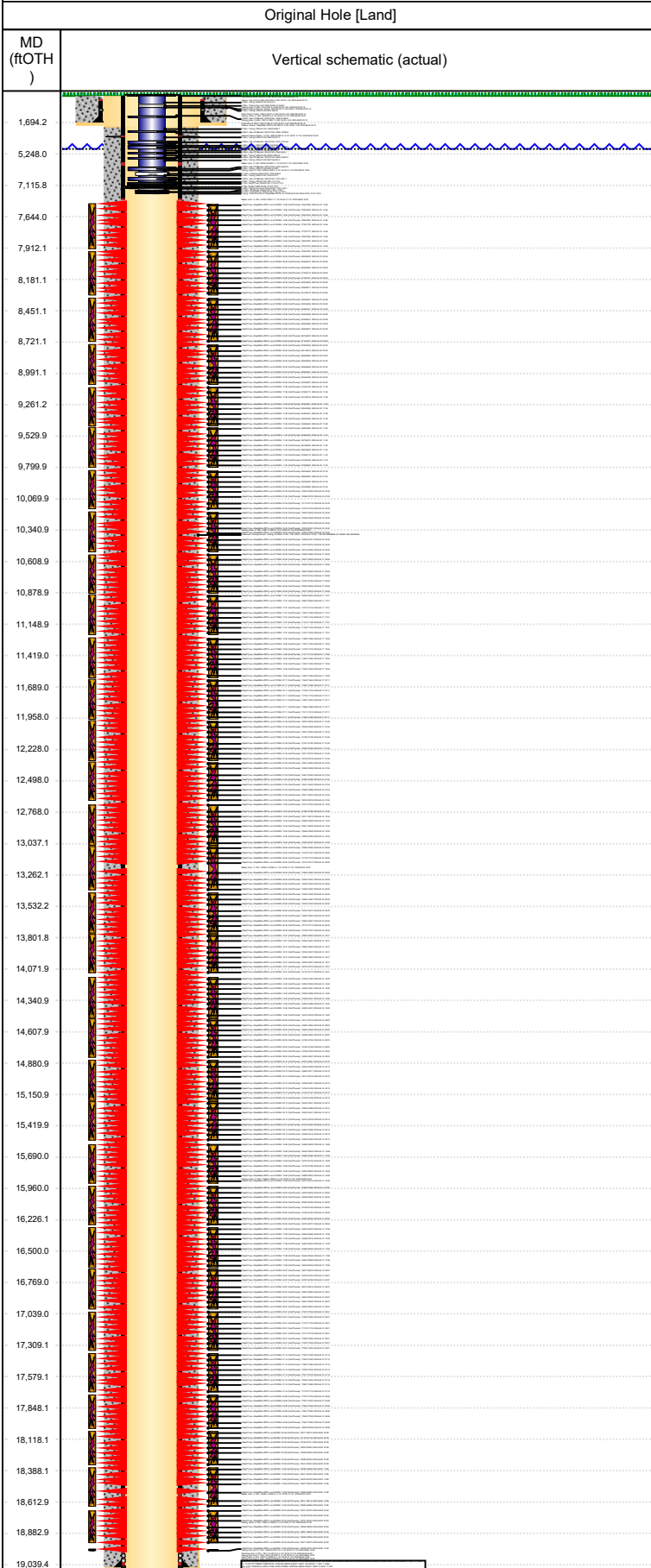




# Wellbore Schematic Input Report

Well Name: KODAK SOUTH 11C



Well Header						
Surface UWI 0512352104		Asset Team 10006300		Production Tree Location Land		
Original RKB Elevation (ft) 4,771.00		Original KB to Ground (ft) 28.00		Original Spud Date 8/2/2023		Abandon Date
Range 67W			Well Sub-Status WO		High Press... N	
Directions To Well Litho Plate Dr.-Eastman Park Dr. West 1/10, South 1/10, East 1/10, South 7/10, West 1/10, South into.				Latitude (°) 40° 27' 8.737" N	Longitude (°) 104° 51' 49.194" W	
Comment						
Congressional Location						
Quarter 3 SE	Quarter 4 SW	Section 26	Township 6	Twntshp N/S Dir N	Range 67	Range E/W Dir W
Rig Operator						
Rig/Unit Supervisor LUIS GARCIA						
Daily Cost Summary						
Sum of Field Est (Cost) 0						
Wellbore Plug Back Total Depths						
Date	PBTD (ftOTH)	Method		Com		
Wellbore Sections						
Section Des		Hole Size (in)	Top Depth (ftOTH)		Btm Depth (ftOTH)	
Surface		13 1/2				
Surface		13 1/2				
Production		8 1/2				
Zone Statuses						
Zone Name		Status Date		Status		
Casing Strings						
Surface, Actual, <DepthBtm>ftOTH						
Casing Description Surface	Run Date 6/2/2023	OD (in) 9 5/8	Wt/Len (l... 36.00	Grade J-55	Top Depth...	Set Depth...
Production, Actual, <DepthBtm>ftOTH						
Casing Description Production	Run Date 8/6/2023	OD (in) 5 1/2	Wt/Len (l... 20.00	Grade P-110	Top Depth...	Set Depth...
Cement						
Des		Start Date		Top (ftOTH)		Btm (ftOTH)
Surface		6/2/2023				
Production Casing Cement		8/7/2023				
Proposed Cement						
Des		Start Date		Top (ftOTH)		Btm (ftOTH)
Tubing Strings						
Tubing Description Tubing - Production	Run Date 7/9/2024	String... 2 3/8	ID (in) 2.000	Wt (lb/ft) 4.70	Grade L-80	Len (ft) 7,102.75
Tubing Components						
Item Des	OD (in)	Wt (lb/ft)	Grade	Jts	Len (ft)	Btm (ftOTH)
Tubing Hanger	5	4.70	N-80	1	0.50	
Tubing	2 3/8	4.70	L-80	1	33.10	
Tubing Pup Joint	2 3/8	4.70	L-80	2	7.08	
Tubing	2 3/8	4.70	L-80	48	1,586.40	
Gas Lift Mandrel	4.283	4.70	N-80	1	4.10	
Tubing	2 3/8	4.70	L-80	39	1,287.78	
Gas Lift Mandrel	4.283	4.70	N-80	1	4.10	
Tubing	2 3/8	4.70	L-80	29	959.90	
Gas Lift Mandrel	4.283	4.70	N-80	1	4.10	
Tubing	2 3/8	4.70	L-80	22	729.30	
Gas Lift Mandrel	4.283	4.70	N-80	1	4.10	
Tubing	2 3/8	4.70	L-80	18	595.80	
Gas Lift Mandrel	4.283	4.70	N-80	1	4.10	
Tubing	2 3/8	4.70	L-80	18	595.26	
Gas Lift Mandrel	4.283	4.70	N-80	1	4.10	
Tubing	2 3/8	4.70	L-80	18	595.80	





# Wellbore Schematic Input Report

Well Name: KODAK SOUTH 11C

Original Hole [Land]		Perforation Data				
MD (fROTH)	Vertical schematic (actual)	Linked Zone	Sum of Entered Shot Total	Top (fROTH)	Btm (fROTH)	Date
1,694.2		Codell, Original Hole	4			4/18/2024
5,248.0		Codell, Original Hole	4			4/18/2024
7,115.8		Codell, Original Hole	4			4/18/2024
7,644.0		Codell, Original Hole	4			4/18/2024
7,912.1		Codell, Original Hole	4			4/18/2024
8,181.1		Codell, Original Hole	4			4/18/2024
8,451.1		Codell, Original Hole	4			4/18/2024
8,721.1		Codell, Original Hole	4			4/18/2024
8,991.1		Codell, Original Hole	4			4/18/2024
9,261.2		Codell, Original Hole	4			4/18/2024
9,529.9		Codell, Original Hole	4			4/18/2024
9,799.9		Codell, Original Hole	4			4/18/2024
10,069.9		Codell, Original Hole	4			4/18/2024
10,340.9		Codell, Original Hole	4			4/18/2024
10,608.9		Codell, Original Hole	4			4/18/2024
10,878.9		Codell, Original Hole	4			4/18/2024
11,148.9		Codell, Original Hole	4			4/18/2024
11,419.0		Codell, Original Hole	4			4/18/2024
11,689.0		Codell, Original Hole	4			4/18/2024
11,958.0		Codell, Original Hole	4			4/18/2024
12,228.0		Codell, Original Hole	4			4/18/2024
12,498.0		Codell, Original Hole	4			4/18/2024
12,768.0		Codell, Original Hole	4			4/18/2024
13,037.1		Codell, Original Hole	4			4/18/2024
13,262.1		Codell, Original Hole	4			4/18/2024
13,532.2		Codell, Original Hole	4			4/17/2024
13,801.8		Codell, Original Hole	4			4/17/2024
14,071.9		Codell, Original Hole	4			4/17/2024
14,340.9		Codell, Original Hole	4			4/17/2024
14,607.9		Codell, Original Hole	4			4/17/2024
14,880.9		Codell, Original Hole	4			4/17/2024
15,150.9		Codell, Original Hole	4			4/17/2024
15,419.9		Codell, Original Hole	4			4/17/2024
15,690.0		Codell, Original Hole	4			4/17/2024
15,960.0		Codell, Original Hole	4			4/17/2024
16,226.1		Codell, Original Hole	4			4/17/2024
16,500.0		Codell, Original Hole	4			4/17/2024
16,769.0		Codell, Original Hole	4			4/17/2024
17,039.0		Codell, Original Hole	4			4/17/2024
17,309.1		Codell, Original Hole	4			4/17/2024
17,579.1		Codell, Original Hole	4			4/17/2024
17,848.1		Codell, Original Hole	4			4/17/2024
18,118.1		Codell, Original Hole	4			4/17/2024
18,388.1		Codell, Original Hole	4			4/17/2024
18,612.9		Codell, Original Hole	4			4/17/2024
18,882.9		Codell, Original Hole	4			4/17/2024
19,039.4		Codell, Original Hole	4			4/17/2024



# Wellbore Schematic Input Report

Well Name: KODAK SOUTH 11C

Original Hole [Land]		Perforation Data				
MD (fROTH)	Vertical schematic (actual)	Linked Zone	Sum of Entered Shot Total	Top (fROTH)	Btm (fROTH)	Date
1,694.2		Codell, Original Hole	4			4/17/2024
5,248.0		Codell, Original Hole	4			4/17/2024
7,115.8		Codell, Original Hole	4			4/17/2024
7,644.0		Codell, Original Hole	4			4/17/2024
7,912.1		Codell, Original Hole	4			4/17/2024
8,181.1		Codell, Original Hole	4			4/17/2024
8,451.1		Codell, Original Hole	4			4/17/2024
8,721.1		Codell, Original Hole	4			4/17/2024
8,991.1		Codell, Original Hole	4			4/17/2024
9,261.2		Codell, Original Hole	4			4/16/2024
9,529.9		Codell, Original Hole	4			4/16/2024
9,799.9		Codell, Original Hole	4			4/16/2024
10,069.9		Codell, Original Hole	4			4/16/2024
10,340.9		Codell, Original Hole	4			4/16/2024
10,608.9		Codell, Original Hole	4			4/16/2024
10,878.9		Codell, Original Hole	4			4/16/2024
11,148.9		Codell, Original Hole	4			4/16/2024
11,419.0		Codell, Original Hole	4			4/16/2024
11,689.0		Codell, Original Hole	4			4/16/2024
11,958.0		Codell, Original Hole	4			4/16/2024
12,228.0		Codell, Original Hole	4			4/16/2024
12,498.0		Codell, Original Hole	4			4/16/2024
12,768.0		Codell, Original Hole	4			4/16/2024
13,037.1		Codell, Original Hole	4			4/16/2024
13,262.1		Codell, Original Hole	4			4/16/2024
13,532.2		Codell, Original Hole	4			4/16/2024
13,801.8		Codell, Original Hole	4			4/16/2024
14,071.9		Codell, Original Hole	4			4/16/2024
14,340.9		Codell, Original Hole	4			4/16/2024
14,607.9		Codell, Original Hole	4			4/16/2024
14,880.9		Codell, Original Hole	4			4/16/2024
15,150.9		Codell, Original Hole	4			4/16/2024
15,419.9		Codell, Original Hole	4			4/16/2024
15,690.0		Codell, Original Hole	4			4/16/2024
15,960.0		Codell, Original Hole	4			4/16/2024
16,226.1		Codell, Original Hole	4			4/16/2024
16,500.0		Codell, Original Hole	4			4/15/2024
16,769.0		Codell, Original Hole	4			4/15/2024
17,039.0		Codell, Original Hole	4			4/15/2024
17,309.1		Codell, Original Hole	4			4/15/2024
17,579.1		Codell, Original Hole	4			4/15/2024
17,848.1		Codell, Original Hole	4			4/15/2024
18,118.1		Codell, Original Hole	4			4/15/2024
18,388.1		Codell, Original Hole	4			4/15/2024
18,612.9		Codell, Original Hole	4			4/15/2024
18,882.9		Codell, Original Hole	4			4/15/2024
19,039.4		Codell, Original Hole	4			4/15/2024



# Wellbore Schematic Input Report

Well Name: KODAK SOUTH 11C

Original Hole [Land]		Perforation Data				
MD (fROTH)	Vertical schematic (actual)	Linked Zone	Sum of Entered Shot Total	Top (fROTH)	Btm (fROTH)	Date
1,694.2		Codell, Original Hole	4			4/15/2024
5,248.0		Codell, Original Hole	4			4/15/2024
7,115.8		Codell, Original Hole	4			4/15/2024
7,644.0		Codell, Original Hole	4			4/15/2024
7,912.1		Codell, Original Hole	4			4/15/2024
8,181.1		Codell, Original Hole	4			4/15/2024
8,451.1		Codell, Original Hole	4			4/15/2024
8,721.1		Codell, Original Hole	4			4/15/2024
8,991.1		Codell, Original Hole	4			4/15/2024
9,261.2		Codell, Original Hole	4			4/15/2024
9,529.9		Codell, Original Hole	4			4/15/2024
9,799.9		Codell, Original Hole	4			4/15/2024
10,069.9		Codell, Original Hole	4			4/15/2024
10,340.9		Codell, Original Hole	4			4/14/2024
10,608.9		Codell, Original Hole	4			4/14/2024
10,878.9		Codell, Original Hole	4			4/14/2024
11,148.9		Codell, Original Hole	4			4/14/2024
11,419.0		Codell, Original Hole	4			4/14/2024
11,689.0		Codell, Original Hole	4			4/14/2024
11,958.0		Codell, Original Hole	4			4/14/2024
12,228.0		Codell, Original Hole	4			4/14/2024
12,498.0		Codell, Original Hole	4			4/14/2024
12,768.0		Codell, Original Hole	4			4/14/2024
13,037.1		Codell, Original Hole	4			4/14/2024
13,262.1		Codell, Original Hole	4			4/14/2024
13,532.2		Codell, Original Hole	4			4/14/2024
13,801.8		Codell, Original Hole	4			4/14/2024
14,071.9		Codell, Original Hole	4			4/14/2024
14,340.9		Codell, Original Hole	4			4/14/2024
14,607.9		Codell, Original Hole	4			4/14/2024
14,880.9		Codell, Original Hole	4			4/14/2024
15,150.9		Codell, Original Hole	4			4/14/2024
15,419.9		Codell, Original Hole	4			4/13/2024
15,690.0		Codell, Original Hole	4			4/13/2024
15,960.0		Codell, Original Hole	4			4/13/2024
16,226.1		Codell, Original Hole	4			4/13/2024
16,500.0		Codell, Original Hole	4			4/13/2024
16,769.0		Codell, Original Hole	4			4/13/2024
17,039.0		Codell, Original Hole	4			4/13/2024
17,309.1		Codell, Original Hole	4			4/13/2024
17,579.1		Codell, Original Hole	4			4/13/2024
17,848.1		Codell, Original Hole	4			4/13/2024
18,118.1		Codell, Original Hole	4			4/13/2024
18,388.1		Codell, Original Hole	4			4/13/2024
18,612.9		Codell, Original Hole	4			4/12/2024
18,882.9		Codell, Original Hole	4			4/12/2024
19,039.4		Codell, Original Hole	4			4/12/2024



# Wellbore Schematic Input Report

Well Name: KODAK SOUTH 11C

Original Hole [Land]		Perforation Data				
MD (fROTH)	Vertical schematic (actual)	Linked Zone	Sum of Entered Shot Total	Top (fROTH)	Btm (fROTH)	Date
1,694.2		Codell, Original Hole	4			4/12/2024
5,248.0		Codell, Original Hole	4			4/12/2024
7,115.8		Codell, Original Hole	4			4/12/2024
7,644.0		Codell, Original Hole	4			4/12/2024
7,912.1		Codell, Original Hole	4			4/10/2024
8,181.1		Codell, Original Hole	4			4/10/2024
8,451.1		Codell, Original Hole	4			4/10/2024
8,721.1		Codell, Original Hole	4			4/10/2024
8,991.1		Codell, Original Hole	4			4/10/2024
9,261.2		Codell, Original Hole	4			4/10/2024
9,529.9		Codell, Original Hole	4			4/10/2024
9,799.9		Codell, Original Hole	4			4/10/2024
10,069.9		Codell, Original Hole	4			4/10/2024
10,340.9		Codell, Original Hole	4			4/10/2024
10,608.9		Codell, Original Hole	4			4/10/2024
10,878.9		Codell, Original Hole	4			4/9/2024
11,148.9		Codell, Original Hole	4			4/9/2024
11,419.0		Codell, Original Hole	4			4/9/2024
11,689.0		Codell, Original Hole	4			4/9/2024
11,958.0		Codell, Original Hole	4			4/9/2024
12,228.0		Codell, Original Hole	4			4/9/2024
12,498.0		Codell, Original Hole	4			4/9/2024
12,768.0		Codell, Original Hole	4			4/9/2024
13,037.1		Codell, Original Hole	4			4/9/2024
13,262.1		Codell, Original Hole	4			4/9/2024
13,532.2		Codell, Original Hole	4			4/9/2024
13,801.8		Codell, Original Hole	4			4/9/2024
14,071.9		Codell, Original Hole	4			4/9/2024
14,340.9		Codell, Original Hole	4			4/9/2024
14,607.9		Codell, Original Hole	4			4/9/2024
14,880.9		Codell, Original Hole	4			4/9/2024
15,150.9		Codell, Original Hole	4			4/9/2024
15,419.9		Codell, Original Hole	4			4/9/2024
15,690.0		Codell, Original Hole	6			4/8/2024
15,960.0		<b>Total</b>	<b>1,026</b>			
16,226.1		<b>Job Supply Amounts</b>				
16,500.0		Supply Item Des	Job Supply Type	Uni...	Job Category	Total... Total... Total...
16,769.0		<b>Daily Cost Breakdown by Category</b>				
17,039.0		Field Est (Cost)	Description	Note		
17,309.1						
17,579.1						
17,848.1						
18,118.1						
18,388.1						
18,612.9						
18,882.9						
19,039.4						