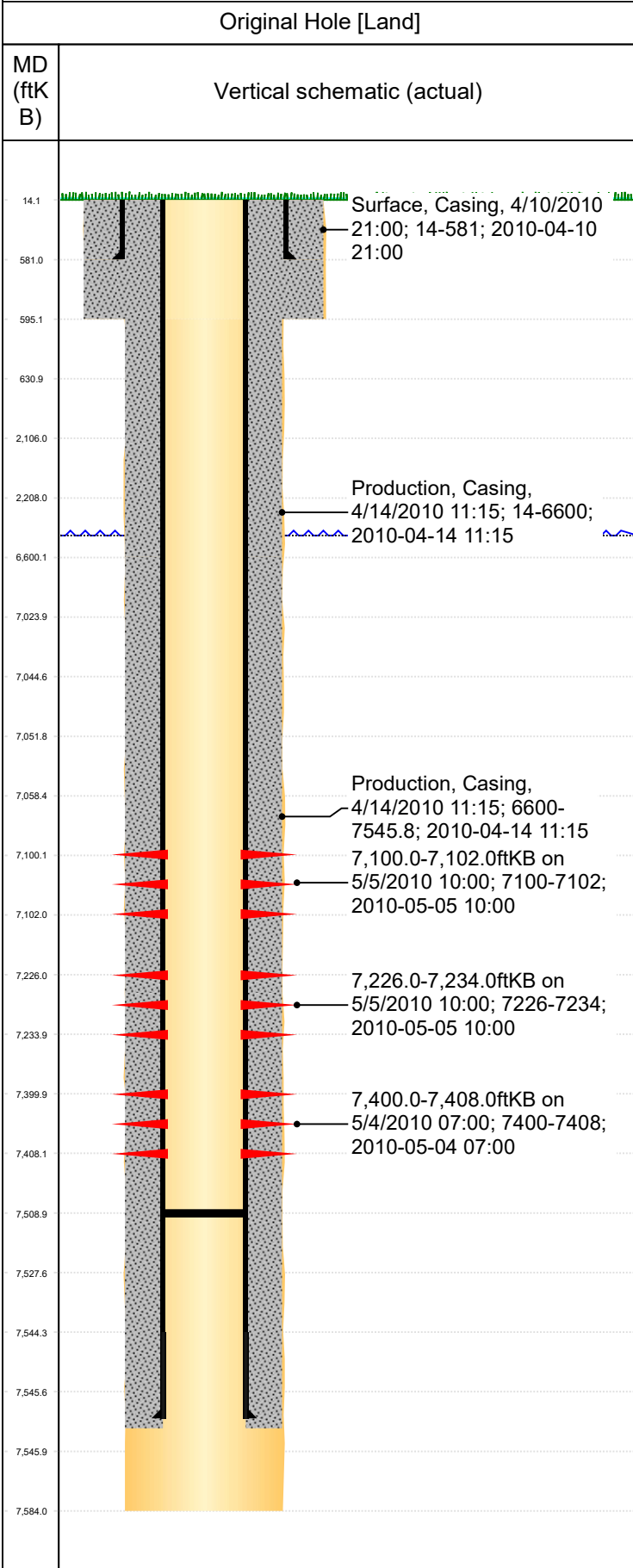




PA Wellbore For State - Vertical

Well Name: Cozzens 42-8D



Well Header													
Surface UWI 0512330913		Business Unit Rockies		Gov Auth Dist Evans		Prod Tree Loc Land							
Orig. KB to Gnd (ft) 14.00		Original Spud Date 4/10/2010		Abandon Date		Well Sub-Status PR		High...					
Comment													
Geologic Horizons													
Formation Name								Final Top MD (ftKB)					
Codell								7,395.6					
Nio A Chalk								7,094.5					
Parkman								3,867.1					
Pierre								549.5					
Pierre (Upper) Aquifer Base								1,583.8					
Pierre (Upper) Aquifer Top								607.8					
Pierre MBR A SD Top								2,900.0					
Pierre_TP_B_A								7,041.4					
Sharon Spring Mkr								7,062.9					
Surface Location (Congressional)													
Qtr 3 NE	Qtr 4 NE	Section 8	Twshp 6	Twsh... N	Range 65	Rng E./... W	Latitude (°) 40.50717	Longitude (°) -104.67953					
Wellbore Sections													
Section Des		Hole Size (in)		Top Depth (ftKB)		Btm Depth (ftKB)							
Surface		12 1/4		14.0		595.0							
Production		7 7/8		595.0		7,584.0							
Casing Strings													
Csg Des		Run Date		OD (in)		Wt/Len (lb/ft)		Grade		Top Depth (MD) (ftKB)		Set Depth (MD) (ftKB)	
Surface		4/10/2010		8 5/8		24.00		J-55		14		581	
Production		4/14/2010		4 1/2		11.60		M-80		14		7545.7	
Cement													
Des			Start Date		Top (ftKB)		Btm (ftKB)						
			4/10/2010		14.0		581.0						
			4/14/2010		14.0		6,600.0						
			4/14/2010		6,600.0		7,545.8						
Stim/Frac Summary													
Min Top Depth (ftKB)					Max Btm Depth (ftKB)								
Perforations													
Linked Zone		Date		Top Depth (ftKB)		Bottom Depth (ftKB)							
Niobrara_A, Original Hole		5/5/2010 10:00		7,100.0		7,102.0							
Linked Zone		Date		Top Depth (ftKB)		Bottom Depth (ftKB)							
Niobrara_B, Original Hole		5/5/2010 10:00		7,226.0		7,234.0							
Linked Zone		Date		Top Depth (ftKB)		Bottom Depth (ftKB)							
Codell, Original Hole		5/4/2010 07:00		7,400.0		7,408.0							
Other In Hole													
Run Date		Des		Make		OD (in)		Top (ftKB)		Btm (ftKB)			
Logs													
Date		Type				Depth Top (MD) (ftKB)		Btm (ftKB)					
Wellbore Plug Back Total Depths													
Date		Type		Com				PBTD (ftKB)					
5/4/2010								7,528					
								7,509					