

Inspection/Audit Photos

Location Name: QB ENERGY OPERATING LLC UNOCAL 2 696 Pad

Location ID: 335687



Photo # 7202 From entrance to location



Photo # 7203 From entrance to location

Inspection/Audit Photos

Location Name: QB ENERGY OPERATING LLC UNOCAL 2 696 Pad

Location ID: 335687

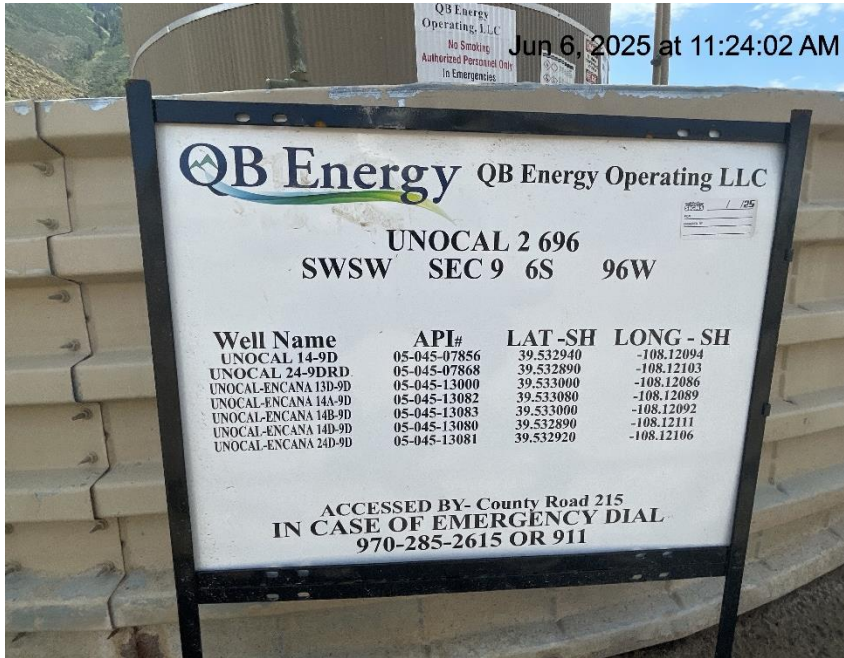


Photo # 7204 Location

Photo # 7205 Location

Inspection/Audit Photos

Location Name: QB ENERGY OPERATING LLC UNOCAL 2 696 Pad

Location ID: 335687



Photo # 7206 Location



Photo # 7207 Location

Inspection/Audit Photos

Location Name: QB ENERGY OPERATING LLC UNOCAL 2 696 Pad

Location ID: 335687



Photo # 7208 Location



Photo # 7209 Location

Inspection/Audit Photos

Location Name: QB ENERGY OPERATING LLC UNOCAL 2 696 Pad

Location ID: 335687



Photo # 7210 Location



Photo # 7211 Location

Inspection/Audit Photos

Location Name: QB ENERGY OPERATING LLC UNOCAL 2 696 Pad

Location ID: 335687



Photo # 7212 UNOCAL-ENCANA 14A-9D wellhead leak



Photo # 7213 UNOCAL-ENCANA 14A-9D wellhead leak

Inspection/Audit Photos

Location Name: QB ENERGY OPERATING LLC UNOCAL 2 696 Pad

Location ID: 335687



Photo # 7214 UNOCAL 24-9DRD leak

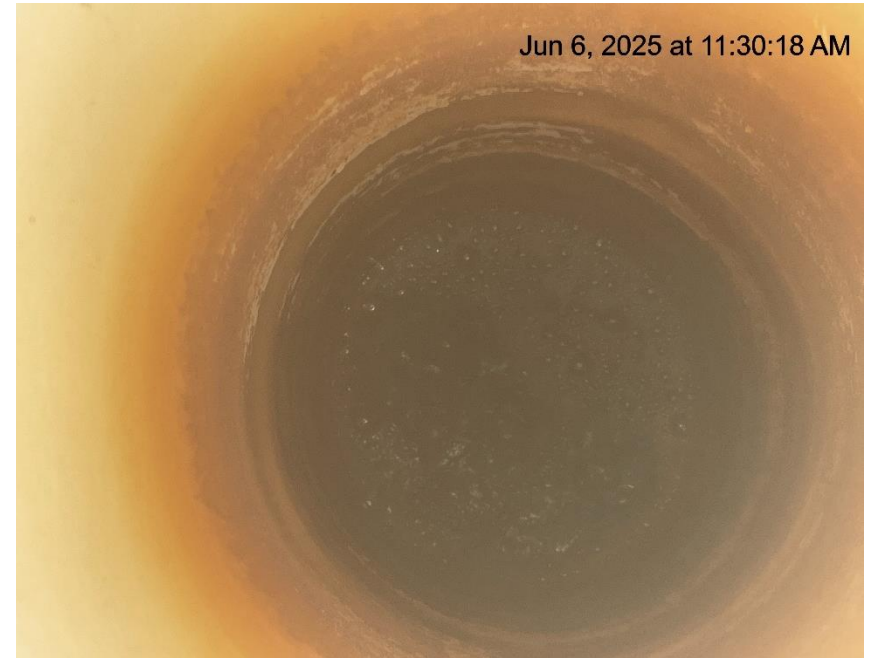


Photo # 7215 UNOCAL 24-9DRD leak

Inspection/Audit Photos

Location Name: QB ENERGY OPERATING LLC UNOCAL 2 696 Pad

Location ID: 335687



Photo # 7216 Tank failure - Tank damaged/hole in tank/tank lacks integrity



Photo # 7217 Tank failure - Tank damaged/hole in tank/tank lacks integrity

Inspection/Audit Photos

Location Name: QB ENERGY OPERATING LLC UNOCAL 2 696 Pad

Location ID: 335687



Photo # 7218 Tank failure - Multiple holes in tank/tank lacks integrity



Photo # 7219 Tank failure - Multiple holes in tank/tank lacks integrity

Inspection/Audit Photos

Location Name: QB ENERGY OPERATING LLC UNOCAL 2 696 Pad

Location ID: 335687



Photo # 7220 Weeds/undesirable plant species in secondary containment



Photo # 7221 Weeds/undesirable plant species in secondary containment

Inspection/Audit Photos

Location Name: QB ENERGY OPERATING LLC UNOCAL 2 696 Pad

Location ID: 335687



Photo # 7222 Weeds/undesirable plant species in secondary containment



Photo # 7223 Weeds/undesirable plant species in secondary containment

Inspection/Audit Photos

Location Name: QB ENERGY OPERATING LLC UNOCAL 2 696 Pad

Location ID: 335687



Photo # 7224 Weeds/undesirable plant species in secondary containment



Photo # 7225 Unused flowline does not comply with CECMC 600 & 1100 series rules

Inspection/Audit Photos

Location Name: QB ENERGY OPERATING LLC UNOCAL 2 696 Pad

Location ID: 335687



Photo # 7226 Unused flowlines do not comply with CECMC 600 & 1100 series rules



Photo # 7227 Unused flowline does not comply with CECMC 600 & 1100 series rules

Inspection/Audit Photos

Location Name: QB ENERGY OPERATING LLC UNOCAL 2 696 Pad

Location ID: 335687



**Photo # 7228 Unused flowline does not comply with CECMC
600 & 1100 series rules**