

**TABLE 1**  
**FIELD DATA SUMMARY TABLE**  
**NOBLE 100322**  
**KISSLER 01,03X, WELD COUNTY, COLORADO**  
**REM # 23714**

<b>Sample ID</b>	<b>Sample Date</b>	<b>Depth (ft)</b>	<b>GPS Data</b> <b>Latitude/Longitude</b>		<b>PDOP Value</b>	<b>VOC Concentration</b> <b>(ppm)</b>
AST01@6"	3/8/23	0.5 Ft	40.290889	-104.527037	-	0.2
MET01@6"	3/8/23	0.5 Ft	40.291161	-104.527068	-	0.3
ECD01@6"	3/8/23	0.5 Ft	40.291115	-104.527132	-	1.7
MET02@6"	3/8/23	0.5 Ft	40.291152	-104.527182	-	0.2
SEP01@4'	3/8/23	4.0 Ft	40.291150	-104.527106	-	1.2
SEP02@5'	3/8/23	5.0 Ft	40.291177	-104.527108	-	0.1
PWVN01@5'	3/8/23	5.0 Ft	40.290918	-104.527101	-	0.9
PWVE01@5'	3/8/23	5.0 Ft	40.290888	-104.52707	-	0.9
PWVS01@5'	3/8/23	5.0 Ft	40.290862	-104.527103	-	68.5
PWVW01@5'	3/8/23	5.0 Ft	40.290890	-104.527133	-	59.3
PWVB01@6.5'	3/8/23	6.5 Ft	40.290889	-104.527104	-	134.1

**TABLE 1**  
**FIELD DATA SUMMARY TABLE**  
**NOBLE 100322**  
**KISSLER 01,03X, WELD COUNTY, COLORADO**  
**REM # 23714**

Sample ID	Sample Date	Depth (ft)	GPS Data		PDOP Value	VOC Concentration (ppm)
			Latitude	Longitude		
SB-CEN 11FT	11/2/23	11.0 Ft	40.2908988	-104.5271224	-	Refer to Bore
SB-E 11FT	11/2/23	11.0 Ft	40.2909061	-104.5270500	-	Refer to Bore
SB-N 11FT	11/2/23	11.0 Ft	40.2909302	-104.5271178	-	Refer to Bore
SB-N2 11FT	11/2/23	11.0 Ft	40.2909567	-104.5271150	-	Refer to Bore
SB-W 11FT	11/2/23	11.0 Ft	40.2908982	-104.5272066	-	Refer to Bore
SB-E2 12FT	11/2/23	12.0 Ft	40.2909123	-104.5269977	-	Refer to Bore
SB-N4 12FT	11/2/23	12.0 Ft	40.2910291	-104.5271506	-	Refer to Bore
SB-S 12FT	11/2/23	12.0 Ft	40.2908375	-104.5271156	-	Refer to Bore
W1	11/2/23	~12.0 Ft	40.2908988	-104.5271224	-	Refer to Bore

1. Global Positioning System (GPS) data is provided in decimal degrees using North American Datum (NAD) 83 UTMZone 13 North.

2. Volatile organic compound (VOC) concentrations are measured in the field using a photoionization detector (PID).

PDOP = Position Dilution of Precision

ppm = Parts per million

in. = Inches

ft. = Feet

bgs = Below ground surface

TABLE 2  
SUMMARY OF VOLATILE ORGANIC SOIL CHEMISTRY DATA  
NOBLE 100322  
KISSLER 01,03X, WELD COUNTY, COLORADO  
REM # 23714

Sample ID	Sample Date	Depth (ft)	Benzene (mg/kg)	Toluene (mg/kg)	Ethyl-Benzene (mg/kg)	Xylenes (mg/kg)	1,2,4-Trimethyl-Benzene (mg/kg)	1,3,5-Trimethyl-Benzene (mg/kg)	Naphthalene (mg/kg)	TPH (mg/kg)	TPH GRO (mg/kg)	TPH DRO (mg/kg)	TPH ORO (mg/kg)
ECMC Table 915-1 Limits (Residential SSL)			1.2	490	5.8	58	30	27	2	500	500**		
ECMC Table 915-1 Limits (Protection of Groundwater SSL)			0.0026	0.69	0.78	9.9	0.0081	0.0087	0.0038	500	500**		
AST01@6"	3/8/23	0.5 Ft	<0.0020	<0.0050	<0.0050	<0.010	<0.0050	<0.0050	<0.0038	<500	<0.5	<50	<50
SEP01@4'	3/8/23	4.0 Ft	<0.0020	<0.0050	<0.0050	<0.010	<0.0050	<0.0050	<0.0038	<500	<0.5	<50	<50
PWVS01@5'	3/8/23	5.0 Ft	<0.0020	<0.0050	<0.0050	<0.010	<0.0050	<0.0050	<0.0038	<500	1.2	210	<50
PWVB01@6.5'	3/8/23	6.5 Ft	<b>0.043</b>	<0.0050	0.019	<0.010	<b>0.49</b>	<0.0050	<b>0.044</b>	<500	4.8	<50	<50
SB-CEN 11FT	11/2/23	11.0 Ft	<b>0.016</b>	<0.0050	<0.0050	<0.010	<b>5</b>	<0.0050	<b>0.47</b>	<500	27	230	<50
SB-E 11FT	11/2/23	11.0 Ft	<0.0020	<0.0050	<0.0050	<0.010	<b>0.5</b>	<b>0.058</b>	<b>0.13</b>	<500	13	120.0	<50
SB-N 11FT	11/2/23	11.0 Ft	<b>0.026</b>	<0.0050	0.049	<0.010	<0.0050	<0.0050	<b>0.62</b>	<b>902</b>	<b>73</b>	<b>770</b>	<b>59</b>
SB-N2 11FT	11/2/23	11.0 Ft	<b>0.38</b>	<0.0050	0.14	<0.010	<0.0050	<0.0050	<b>0.39</b>	<b>1760</b>	<b>1100</b>	<b>590</b>	<b>70</b>
SB-W 11FT	11/2/23	11.0 Ft	<0.0020	<0.0050	<0.0050	<0.010	0.0058	<0.0050	<b>0.0039</b>	<500	<0.50	<50	<50
SB-E2 12FT	11/2/23	12.0 Ft	<0.0020	<0.0050	<0.0050	<0.010	<0.0050	<0.0050	<0.0038	<500	<0.50	<50	<50
SB-N4 12FT	11/2/23	12.0 Ft	<0.0020	<0.0050	<0.0050	<0.010	<0.0050	<0.0050	<0.0038	<500	<0.50	<50	<50
SB-S 12FT	11/2/23	12.0 Ft	<0.0020	<0.0050	<0.0050	<0.010	<0.0050	<0.0050	<0.0038	<500	<0.50	<50	<50

1. Bold values exceed the ECMC Table 915-1 limit(s)
  2. Red & blue highlighted soil analytical values indicate an exceedance of the referenced soil screening level (SSL)
  3. \* Indicates laboratory minimum detection limit in excess of SSL
  4. \*\* Summation of GRO+DRO+ORO must be less than 500 mg/kg
- (<) = Analytical result is less than the indicated laboratory reporting limit.  
TPH-GRO = Total petroleum hydrocarbons - gasoline range organics  
TPH-DRO = Total petroleum hydrocarbons - diesel range organics  
TPH-ORO = Total petroleum hydrocarbons - oil range organics  
mg/kg = Milligrams per kilogram  
ft. = Feet  
bgs = Below ground surface  
NA - Not analyzed

TABLE 3  
SUMMARY OF POLYCYCLIC AROMATIC HYDROCARBON SOIL CHEMISTRY DATA  
NOBLE 100322  
KISSLER 01,03X, WELD COUNTY, COLORADO  
REM # 23714

Sample ID	Sample Date	Depth (ft)	Acenaphthene (mg/kg)	Anthracene (mg/kg)	Benzo (a) Anthracene (mg/kg)	Benzo (a) Pyrene (mg/kg)	Benzo (b) Fluoranthene (mg/kg)	Benzo (k) Fluoranthene (mg/kg)	Chrysene (mg/kg)	Dibenzo (a,h) Anthracene (mg/kg)	Fluoranthene (mg/kg)	Fluorene (mg/kg)	Indeno (1,2,3-cd) Pyrene (mg/kg)	Pyrene (mg/kg)	1-Methyl - Naphthalene (mg/kg)	2-Methyl- Naphthalene (mg/kg)
ECMC Table 915-1 Limits (Residential SSL)			360	1800	1.1	0.11	1.1	11	110	0.11	240	240	1.1	180	18	24
ECMC Table 915-1 Limits (Protection of Groundwater SSL)			0.55	5.8	0.011	0.24	0.3	2.9	9	0.096	8.9	0.54	0.98	1.3	0.006	0.019
AST01@6"	3/8/23	0.5 Ft	<0.00500	<0.00500	<0.00500	<0.00500	<0.00500	<0.00500	<0.00500	<0.00500	<0.00500	<0.00500	<0.00500	<0.00500	<0.00500	<0.00500
SEP01@4'	3/8/23	4.0 Ft	<0.00500	<0.00500	<0.00500	<0.00500	<0.00500	<0.00500	<0.00500	<0.00500	<0.00500	<0.00500	<0.00500	<0.00500	<0.00500	<0.00500
PWVS01@5'	3/8/23	5.0 Ft	<0.00500	<0.00500	<0.00500	<0.00500	<0.00500	<0.00500	0.0195	<0.00500	<0.00500	<0.00500	<0.00500	<0.00500	<0.00500	<0.00500
PWVB01@6.5'	3/8/23	6.5 Ft	<0.00500	<0.00500	<0.00500	<0.00500	<0.00500	<0.00500	<0.00500	<0.00500	<0.00500	0.024	<0.00500	<0.00500	<b>0.142</b>	<b>0.162</b>
SB-CEN 11FT	11/2/23	11.0 Ft	<0.00500	<0.00500	0.0103	<0.00500	<0.00500	<0.00500	0.00674	<0.00500	<0.00500	<0.00500	<0.00500	0.00587	<b>5.3</b>	<b>12.6</b>
SB-E 11FT	11/2/23	11.0 Ft	<0.00500	<0.00500	<0.00500	<0.00500	<0.00500	<0.00500	<0.00500	<0.00500	<0.00500	<0.00500	<0.00500	<0.00500	<b>0.209</b>	<b>0.468</b>
SB-N 11FT	11/2/23	11.0 Ft	<0.00500	<0.00500	<b>0.0148</b>	<0.00500	<0.00500	<0.00500	0.01	<0.00500	0.00983	0.115	<0.00500	0.00894	<b>1.11</b>	<b>2.66</b>
SB-N2 11FT	11/2/23	11.0 Ft	<0.00500	<0.00500	<b>0.0266</b>	<0.00500	<0.00500	<0.00500	0.0395	<0.00500	<0.00500	0.102	<0.00500	0.0444	<b>0.92</b>	<b>2.44</b>
SB-W 11FT	11/2/23	11.0 Ft	<0.00500	<0.00500	<0.00500	<0.00500	<0.00500	<0.00500	<0.00500	<0.00500	<0.00500	0.00949	<0.00500	<0.00500	<b>0.013</b>	0.00755
SB-E2 12FT	11/2/23	12.0 Ft	<0.00500	<0.00500	<0.00500	<0.00500	<0.00500	<0.00500	<0.00500	<0.00500	<0.00500	<0.00500	<0.00500	<0.00500	<0.00500	<0.00500
SB-N4 12FT	11/2/23	12.0 Ft	<0.00500	<0.00500	<0.00500	<0.00500	<0.00500	<0.00500	<0.00500	<0.00500	<0.00500	<0.00500	<0.00500	<0.00500	<0.00500	<0.00500
SB-S 12FT	11/2/23	12.0 Ft	<0.00500	<0.00500	<0.00500	<0.00500	<0.00500	<0.00500	<0.00500	<0.00500	<0.00500	<0.00500	<0.00500	<0.00500	<0.00500	<0.00500

1. Bold values exceed the ECMC Table 915-1 limit(s)
  2. Red & blue highlighted soil analytical values indicate an exceedance of the referenced soil screening level (SSL)
  3. \* Indicates laboratory minimum detection limit in excess of SSL
  4. \*\* Summation of GRO+DRO+ORO must be less than 500 mg/kg
- (<) = Analytical result is less than the indicated laboratory reporting limit.  
TPH-GRO = Total petroleum hydrocarbons - gasoline range organics  
TPH-DRO = Total petroleum hydrocarbons - diesel range organics  
TPH-ORO = Total petroleum hydrocarbons - oil range organics  
mg/kg = Milligrams per kilogram  
ft. = Feet  
bgs = Below ground surface  
NA = Not analyzed

**TABLE 4**  
**SUMMARY OF SOIL SUITABILITY FOR RECLAMATION**  
**NOBLE 100322**  
**KISSLER 01,03X, WELD COUNTY, COLORADO**  
**REM # 23714**

Sample ID	Sample Date	Depth (ft)	pH (Standard Units)	EC (mmhos/cm)	SAR (Standard Units)	Boron (mg/L)
ECMC Table 915-1 Soil Suitability Limits			6 - 8.3	4	6	2
AST01@6"	3/8/23	0.5 Ft	<b>8.75</b>	0.222	1.24	0.125
SEP01@4'	3/8/23	4.0 Ft	8.02	0.412	1.00	0.497
PWVS01@5'	3/8/23	5.0 Ft	7.87	0.553	0.607	0.655
PWVB01@6.5'	3/8/23	6.5 Ft	7.77	0.398	1.47	0.812
SB-CEN 11FT	11/2/23	11.0 Ft	<b>9.35</b>	0.252	1.83	<2.00
SB-E 11FT	11/2/23	11.0 Ft	8.01	0.419	0.177	<2.00
SB-N 11FT	11/2/23	11.0 Ft	<b>9.42</b>	0.390	0.897	<2.00
SB-N2 11FT	11/2/23	11.0 Ft	<b>8.45</b>	0.304	1.92	<2.00
SB-W 11FT	11/2/23	11.0 Ft	<b>8.45</b>	0.398	1.64	<2.00
SB-E2 12FT	11/2/23	12.0 Ft	8.07	0.149	2.01	<2.00
SB-N4 12FT	11/2/23	12.0 Ft	<b>8.76</b>	0.270	2.21	<2.00
SB-S 12FT	11/2/23	12.0 Ft	7.92	0.120	1.61	<2.00

1. **Bold** faced values exceed the ECMC Table 915-1 limit(s), but are within background concentrations.

2. **Bold** faced values exceed the ECMC Table 915-1 limit(s) and native background concentrations.

3. Brown highlighted soil analytical values indicate a regulatory exceedance.

NA - Not analyzed/Not applicable

TABLE 5  
SUMMARY OF METALS IN SOIL CHEMISTRY DATA  
NOBLE 100322  
KISSLER 01,03X, WELD COUNTY, COLORADO  
REM # 23714

Sample ID	Sample Date	Depth (ft)	Arsenic (mg/kg)	Barium (mg/kg)	Cadmium (mg/kg)	Chromium (VI) (mg/kg)	Copper (mg/kg)	Lead (mg/kg)	Nickel (mg/kg)	Selenium (mg/kg)	Silver (mg/kg)	Zinc (mg/kg)
ECMC Table 915-1 Limits (Residential SSL)			0.68	15000	71	0.3	3100	400	1500	390	390	23000
ECMC Table 915-1 Limits (Protection of Groundwater SSL)			0.29	82	0.38	0.00067	46	14	26	0.26	0.8	370
SB-CEN 11FT	11/2/23	11.0 Ft	<b>3.86</b>	<b>128</b>	0.347	<0.30	7.78	8.75	5.78	<0.260	0.0592	21.1
SB-E 11FT	11/2/23	11.0 Ft	<b>1.92</b>	62.2	<0.200	<0.30	3.44	6.23	4.14	<0.260	0.0388	15.8
SB-E2 12FT	11/2/23	12.0 Ft	<b>2.43</b>	56.2	<0.200	<0.30	3.64	5.01	3.22	<0.260	0.0250	13.9
SB-N 11FT	11/2/23	11.0 Ft	<b>2.68</b>	72.2	<0.200	<0.30	4.62	5.54	4.03	<0.260	0.0314	15.2
SB-N2 11FT	11/2/23	11.0 Ft	<b>4.51</b>	<b>82.9</b>	<0.200	<0.30	5.00	6.32	5.19	<0.260	0.0218	14.8
SB-N4 12FT	11/2/23	12.0 Ft	<b>1.84</b>	38.0	<0.200	<0.30	2.68	3.55	2.70	<0.260	0.0254	9.56
SB-S 12FT	11/2/23	12.0 Ft	<b>5.59</b>	<b>269</b>	0.233	<0.30	6.57	7.39	5.11	<0.260	0.0389	16.4
SB-W 11FT	11/2/23	11.0 Ft	<b>6.79</b>	<b>195</b>	0.314	<0.30	8.46	10.8	5.91	<0.260	0.0528	22.6

- 1. Bold** faced values exceed the ECMC Table 915-1 limit(s), but are within 1.25x background concentrations.
- 2. Bold** faced values exceed the ECMC Table 915-1 limit(s) and native background concentrations.
- Red & blue highlighted soil analytical values indicate an exceedance of the referenced soil screening level (SSL).
- Non-detect background results accounted for in the highest background concentration by using the reporting limit.

ECMC = Energy & Carbon Management Commission

(<) = Analytical result is less than the indicated laboratory reporting limit.

mg/kg = Milligrams per kilogram

ft. = Feet

bgs = Below ground surface

\* Indicates laboratory minimum detection limit in excess of SSL

NA - Not analyzed/Not applicable

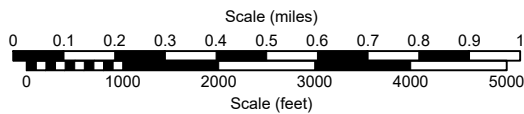
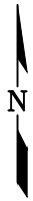
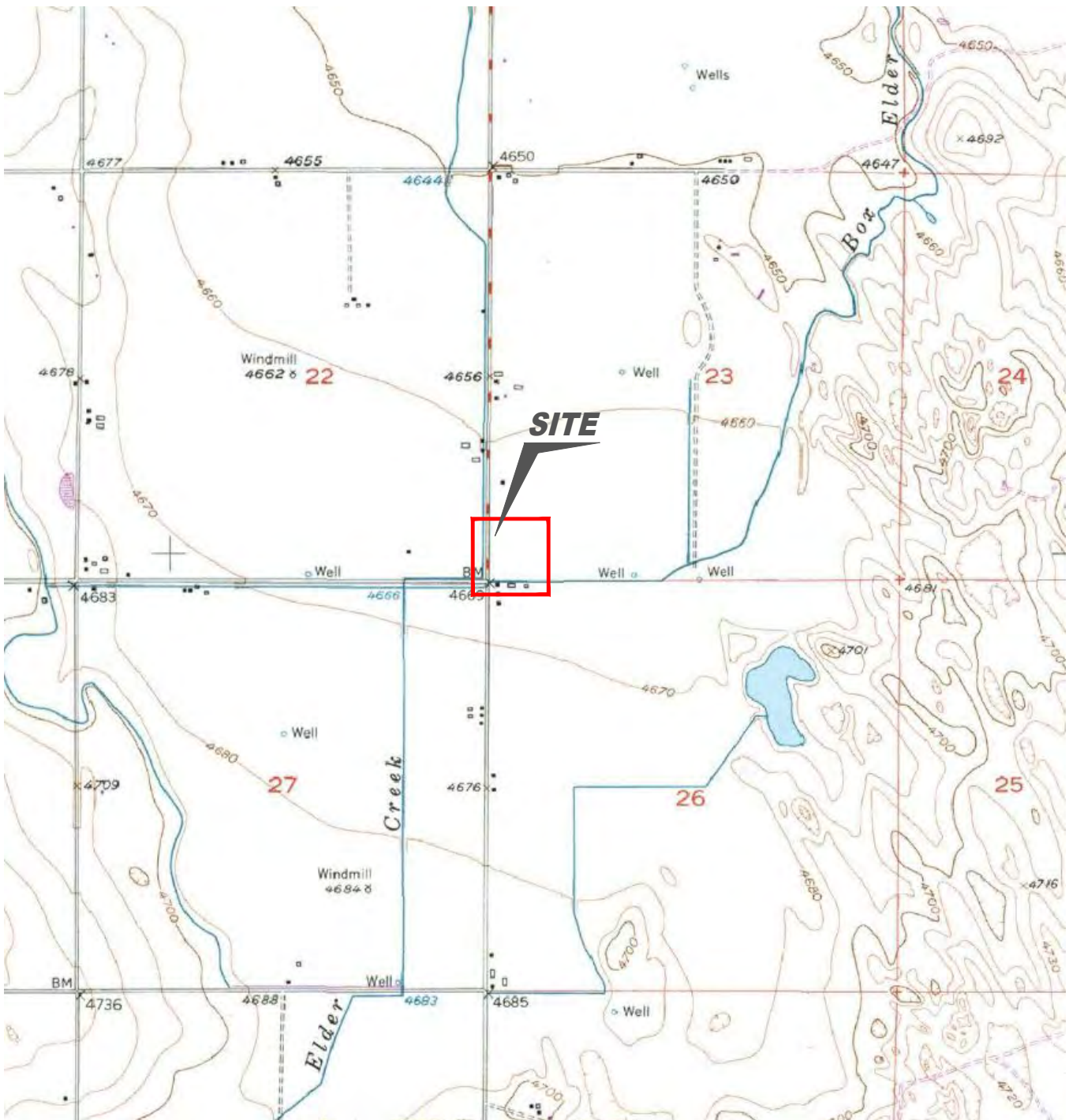
**TABLE 6**  
**SUMMARY OF GROUNDWATER ELEVATION DATA AND ORGANIC CHEMISTRY DATA**  
**NOBLE 100322**  
**KISSLER 01,03X, WELD COUNTY, COLORADO**  
**REM # 23714**

Sample ID	Sample Date	Benzene (µg/L)	Toluene (µg/L)	Ethyl-Benzene (µg/L)	Xylenes (µg/L)	Naphthalene (µg/L)	1,2,4- Trimethyl- Benzene (µg/L)	1,3,5- Trimethyl- Benzene (µg/L)	Depth to Groundwater Below Ground Surface (ft)	LNAPL Thickness (ft)
ECMC Table 915-1 Limits		5.0	560	700	1400	140	67	67		
W1	11/02/23	<1.0	<1.0	<1.0	<2.0	4.5	55	<1.0	~12.0 Ft	NP

1. Bold values exceed the ECMC limit(s)

2. Red highlighted groundwater analytical values indicate a regulatory exceedance

NP - No measurable LNAPL, NA - Not Analyzed, NL - No Limit, INA - Inaccessible, IW - Insufficient Water, DES - Destroyed



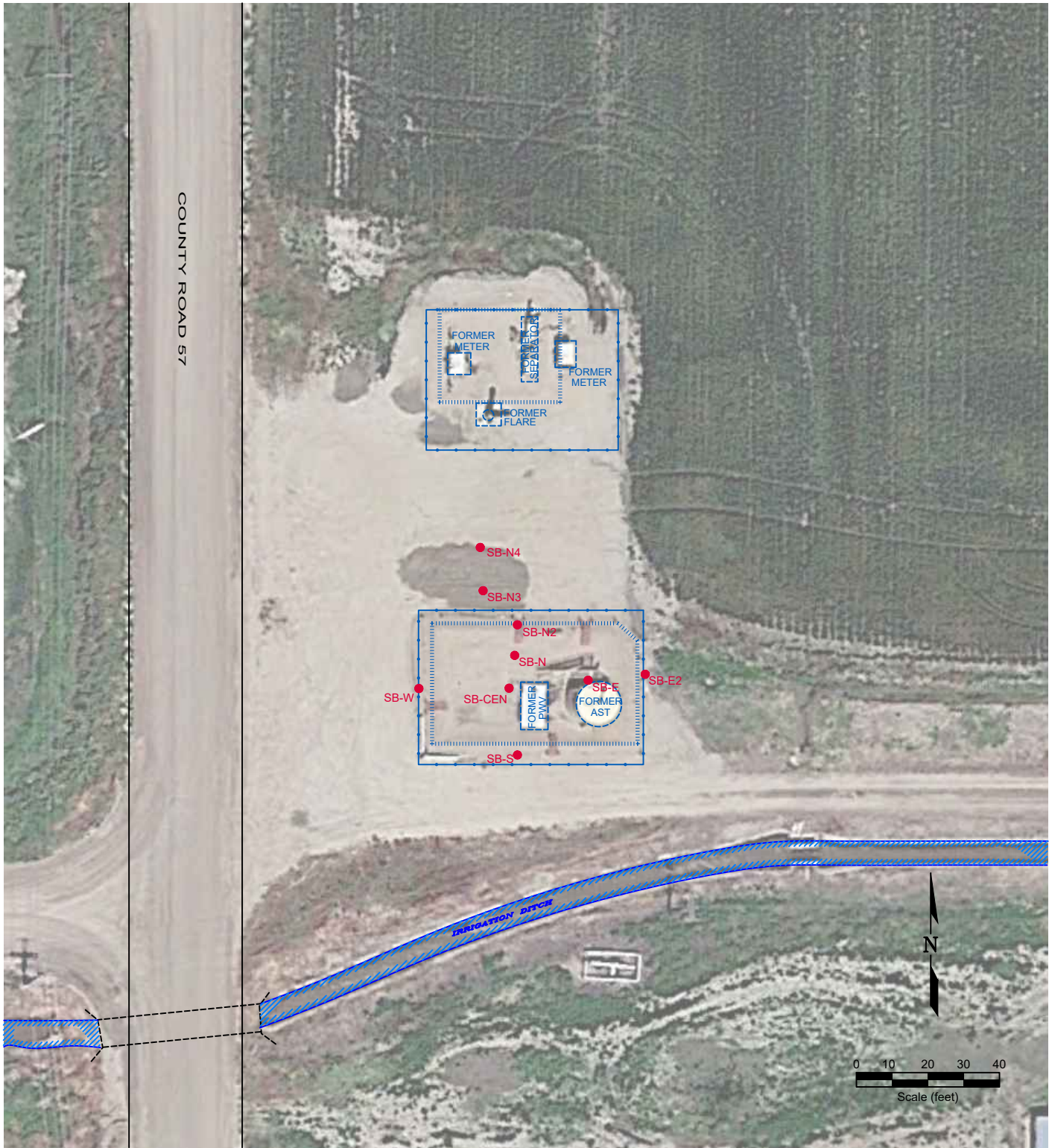
USGS 7.5 MINUTE SERIES (TOPOGRAPHIC)

Figure 1  
SITE LOCATION MAP

**NOBLE ENERGY INC - KISSLER 01,03X**  
 SWSW Sec. 23, T4N, R64W, 6th PM  
 Weld County, Colorado  
 40.290983°, -104.527062°

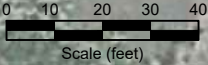
Project No. <b>CO23-074</b>	API #	Facility # <b>447356</b>
Date <b>01/08/2024</b>	Remediation # <b>23714</b>	Filename <b>23074T</b>





COUNTY ROAD 57

IRRIGATION DITCH



**LEGEND**

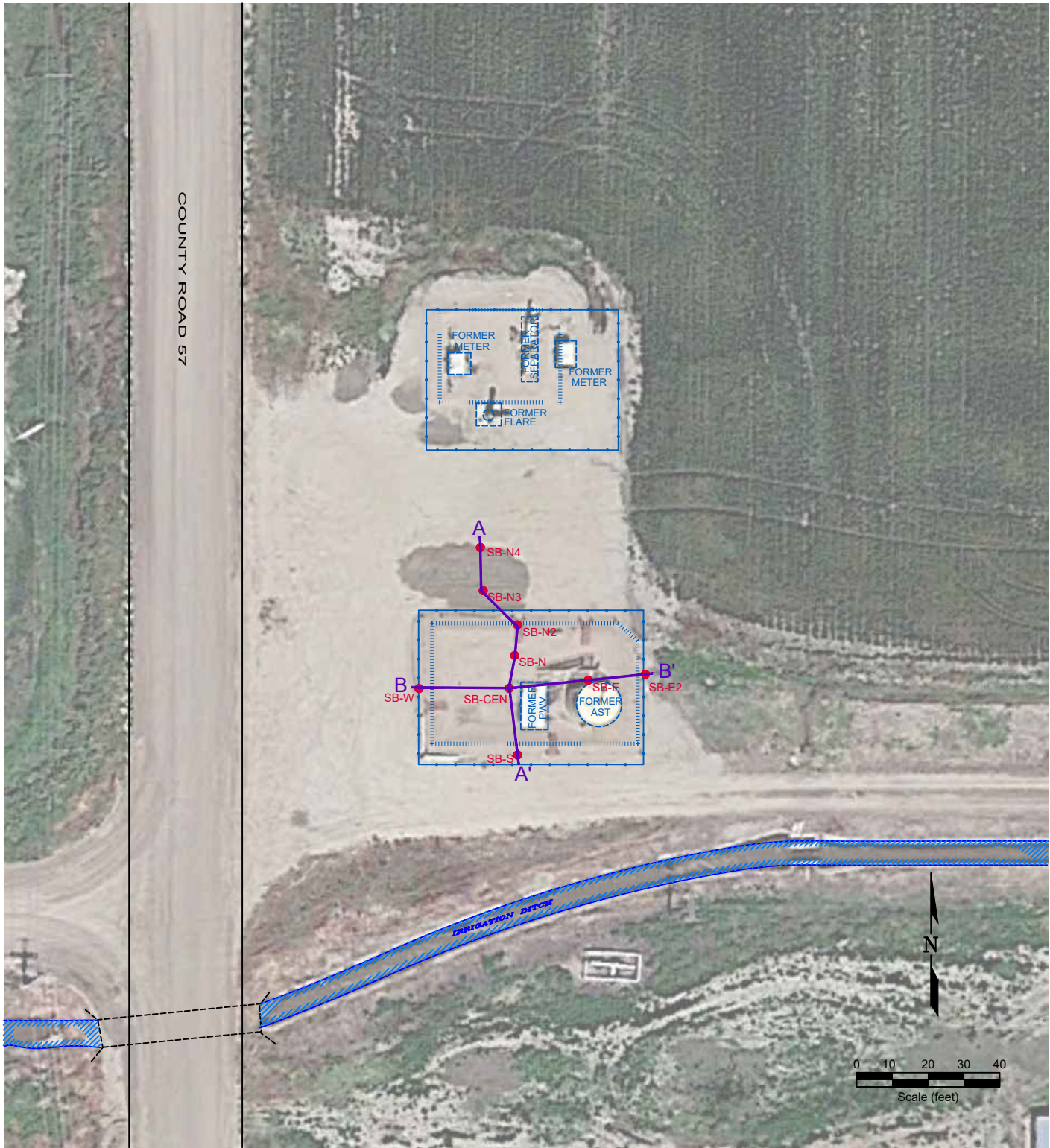
- SOIL BORING LOCATION
- ABOVE GROUND STORAGE TANK
- FORMER FACILITY
- CONTAINMENT BERM
- CONTAINMENT WALL
- FENCE LINE

**Figure 2  
SITE MAP**

**NOBLE ENERGY INC - KISSLER 01,03X**  
**SWSW Sec. 23, T4N, R64W, 6th PM**  
 Weld County, Colorado  
 40.290983°, -104.527062°

Project No. <b>CO23-074</b>	API #	Facility # <b>447356</b>
Date <b>1/8/24</b>	Remediation # <b>23714</b>	Filename <b>23074QTB</b>





**LEGEND**

- SOIL BORING LOCATION
- ABOVE GROUND STORAGE TANK
- FORMER FACILITY
- CONTAINMENT BERM
- CONTAINMENT WALL
- FENCE LINE
- A-A' CROSS SECTION CUT LINE

Figure 3  
**CROSS SECTION MAP**

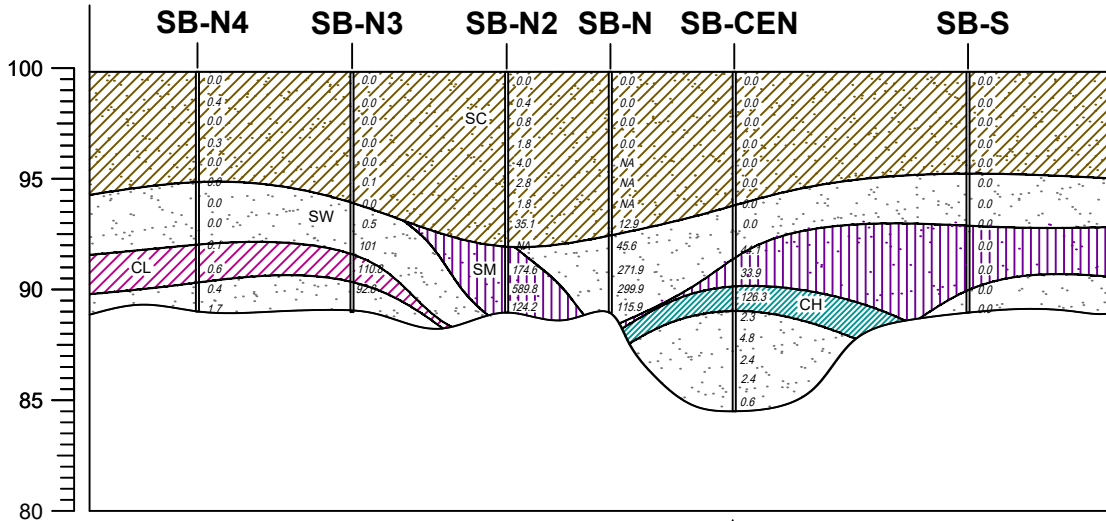
**NOBLE ENERGY INC - KISSLER 01,03X**  
**SWSW Sec. 23, T4N, R64W, 6th PM**  
 Weld County, Colorado  
 40.290983°, -104.527062°

Project No. <b>CO23-074</b>	API #	Facility # <b>447356</b>
Date <b>1/9/24</b>	Remediation # <b>23714</b>	Filename <b>23074QTB</b>



NORTH  
**A**

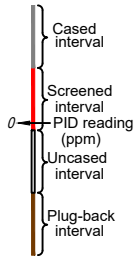
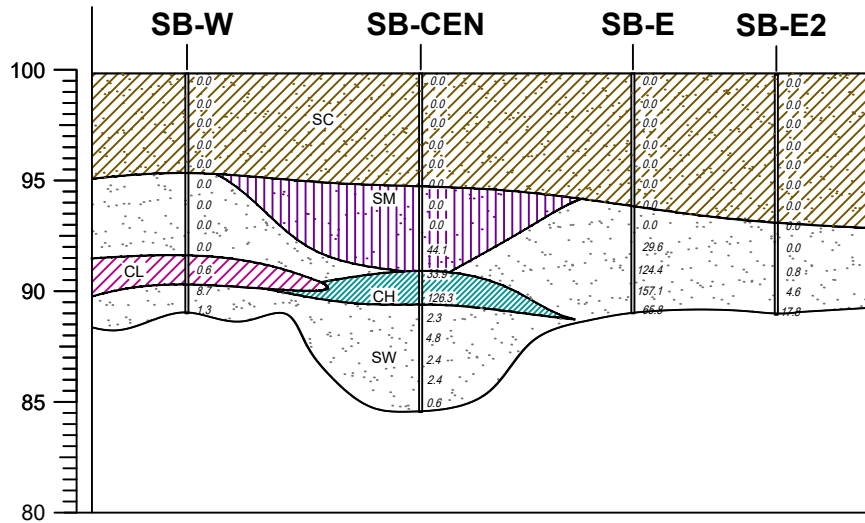
SOUTH  
**A'**



WEST  
**B**

Intersect A-A'/B-B'

EAST  
**B'**



**LEGEND**

Clay, high plasticity	Sand, well-graded	Fill
Clay, low plasticity	Sand, poorly-graded	Asphalt
Silt, high plasticity	Sand, clayey	Roadbase
Silt, low plasticity	Sand silty	Basin fill
Clay, silty, high plasticity	Gravel, well-graded	Claystone
Clay, silty, low plasticity	Gravel	Firm sandy clay
Silt, clayey, high plasticity	Gravel, clayey	Shale
Silt, clayey, low plasticity	Gravel, silty	Sandstone

Figure 4

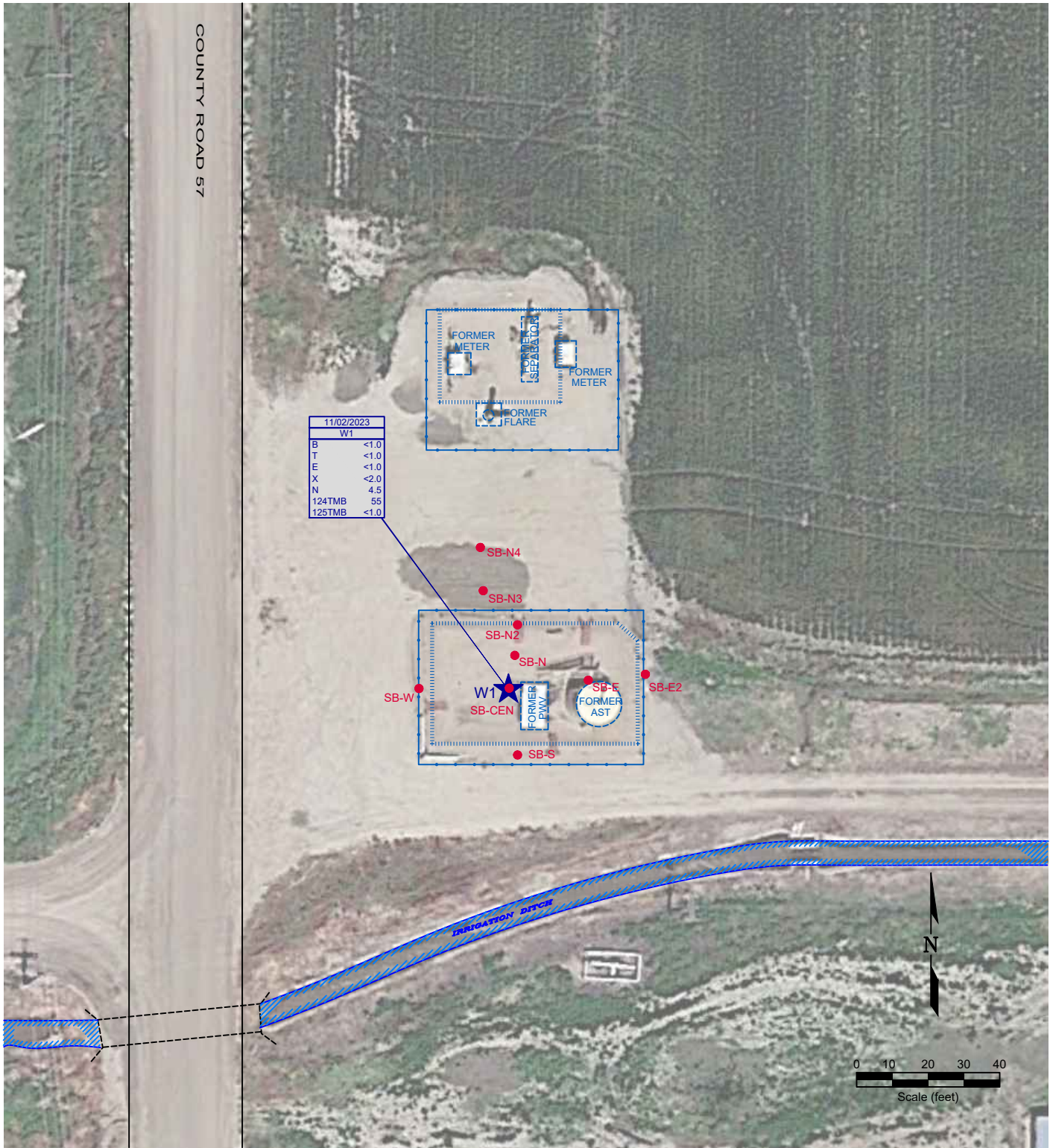
**CROSS SECTIONS A - A' AND B - B'**

**NOBLE ENERGY INC - KISSLER 01,03X**  
SWSW Sec. 23, T4N, R64W, 6th PM  
Weld County, Colorado  
40.290983°, -104.527062°

Project No. <b>C023-074</b>	API #	Facility # <b>447356</b>
Date <b>1/9/24</b>	Remediation # <b>23714</b>	Filename <b>23074X</b>







COUNTY ROAD 57

11/02/2023	
W1	
B	<1.0
T	<1.0
E	<1.0
X	<2.0
N	4.5
124TMB	55
125TMB	<1.0

**LEGEND**

- SOIL BORING LOCATION
- ★ GROUNDWATER SAMPLE LOCATION
- ABOVE GROUND STORAGE TANK
- FORMER FACILITY
- CONTAINMENT BERM
- CONTAINMENT WALL
- FENCE LINE

11/02/2023	
W1	
B	<1.0
T	<1.0
E	<1.0
X	<2.0
N	4.5
124TMB	55
125TMB	<1.0

DATE SAMPLED  
 SAMPLE ID  
 BENZENE (ug/L)  
 TOLUENE (ug/L)  
 ETHYLBENZENE (ug/L)  
 TOTAL XYLENES (ug/L)  
 NAPHTHALENE (ug/L)  
 1,2,4-TRIMETHYLBENZENE (ug/L)  
 1,3,5-TRIMETHYLBENZENE (ug/L)

Figure 6  
**GROUNDWATER CHEMISTRY MAP**

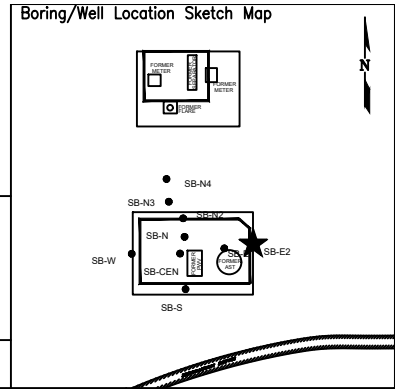
**NOBLE ENERGY INC - KISSLER 01,03X**  
**SWSW Sec. 23, T4N, R64W, 6th PM**  
 Weld County, Colorado  
 40.290983°, -104.527062°

Project No. <b>CO23-074</b>	API #	Facility # <b>447356</b>
Date <b>3/5/25</b>	Remediation # <b>23714</b>	Filename <b>23074QTB</b>





# BORING/WELL CONSTRUCTION LOG



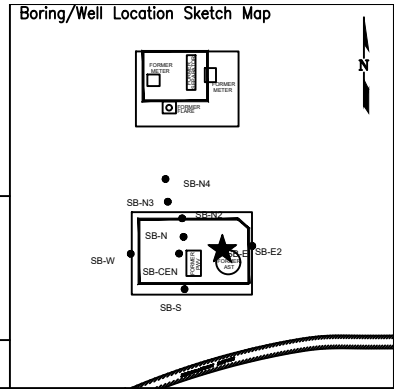
Page 1 of 1

Boring/Well No. <b>SB-E2</b>		Total Depth <b>12'</b>	Location <b>Noble Energy, Inc. Kissler 01,03X SWSW Sec. 23, T4N, R64W, 6th PM Weld County, Colorado</b>				
Project No./Name <b>CO23-074 / Noble Kissler 01, 03X</b>			Approved By				
Drilling Contractor/Driller <b>Drill Pro / Terrence, Bennett, Glen, Blake</b>			Geologist/Office <b>Ethan Black / Fremont Environmental, Inc.</b>				
Drilling Equipment/Method <b>Geoprobe</b>			Size/Type of Bit <b>2.5" direct push</b>	Sampling Method <b>direct push</b>	Start/Finish Date <b>11/02/2023</b>		
Well Installed? Yes <input type="checkbox"/> No <input checked="" type="checkbox"/>		Casing Mtrl./Dia.	Screen: Type	Mtrl.	Length	Dia.	
Elevation of: (ft. above datum)		Ground Surface	Top of Well Casing	Top of Screen	Bottom of Screen	Ground Water Surface/Date Measured	

DEPTH (feet)	WELL CONSTRUCTION	LITHOLOGY		Penetration Rate (blows/6")	Recovery (%)	Sample Interval (feet)	PID Values (ppm)	
		GRAPHIC LOG	VISUAL DESCRIPTION					
5	[Well Construction Diagram]	SC	Sandy Clay: brown				0.0	
							0.0	
							0.0	
							0.0	
							0.0	
							0.0	
							0.0	
							0.0	
							0.0	
							0.0	
10	[Well Construction Diagram]	SW	Sand: gray to beige		90%		0.0	
			black 2" SM lens at 10'				0.8	
			TD 12'		90%		4.6	
15	[Well Construction Diagram]						17.8	
20	[Well Construction Diagram]							



# BORING/WELL CONSTRUCTION LOG



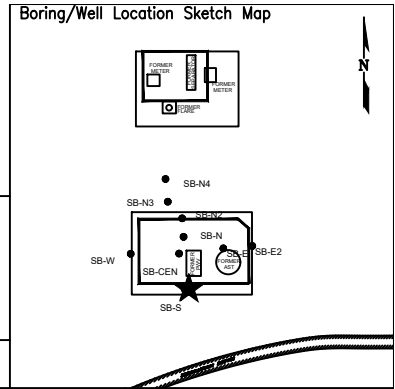
Page 1 of 1

Boring/Well No. <b>SB-E</b>		Total Depth <b>12'</b>	Location <b>Noble Energy, Inc. Kissler 01,03X SWSW Sec. 23, T4N, R64W, 6th PM Weld County, Colorado</b>			
Project No./Name <b>CO23-074 / Noble Kissler 01, 03X</b>		Drilling Contractor/Driller <b>Drill Pro / Terrence, Bennett, Glen, Blake</b>				
Geologist/Office <b>Ethan Black / Fremont Environmental, Inc.</b>		Approved By				
Drilling Equipment/Method <b>Geoprobe</b>		Size/Type of Bit <b>2.5" direct push</b>		Sampling Method <b>direct push</b>		
				Start/Finish Date <b>11/02/2023</b>		
Well Installed? Yes <input type="checkbox"/> No <input checked="" type="checkbox"/>		Casing Mtrl./Dia.	Screen: Type		Mtrl.	
			Length		Dia.	
		Slot Size				
Elevation of: (ft. above datum)		Ground Surface	Top of Well Casing	Top of Screen	Bottom of Screen	
					Ground Water Surface/Date Measured	

DEPTH (feet)	WELL CONSTRUCTION	LITHOLOGY		Penetration Rate (blows/6")	Recovery (%)	Sample Interval (feet)	PID Values (ppm)
		GRAPHIC LOG	VISUAL DESCRIPTION				
5	[Well Construction Diagram]	SC	Sandy Clay: brown, very fine sand		90%		0.0
		0.0					
		0.0					
		0.0					
		0.0					
		0.0					
		0.0					
		0.0					
		0.0					
		0.0					
10	[Well Construction Diagram]	SW	Sand: beige and gray, very fine sand, wet		90%		29.6
		124.4					
		157.1					
		65.8					
		65.8					
15	[Well Construction Diagram]				90%		
20	[Well Construction Diagram]				90%		



# BORING/WELL CONSTRUCTION LOG



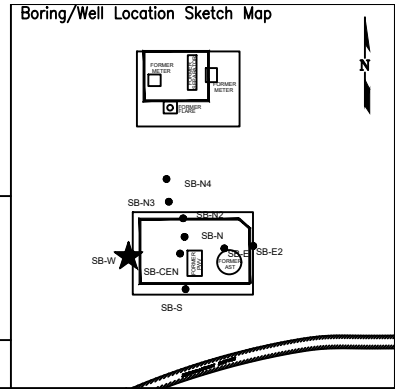
Page 1 of 1

Boring/Well No. <b>SB-S</b>		Total Depth <b>12'</b>	Location <b>Noble Energy, Inc. Kissler 01,03X SWSW Sec. 23, T4N, R64W, 6th PM Weld County, Colorado</b>				
Project No./Name <b>CO23-074 / Noble Kissler 01, 03X</b>		Drilling Contractor/Driller <b>Drill Pro / Terrence, Bennett, Glen, Blake</b>					
Geologist/Office <b>Ethan Black / Fremont Environmental, Inc.</b>		Approved By					
Drilling Equipment/Method <b>Geoprobe</b>		Size/Type of Bit <b>2.5" direct push</b>		Sampling Method <b>direct push</b>			
				Start/Finish Date <b>11/02/2023</b>			
Well Installed? Yes <input type="checkbox"/> No <input checked="" type="checkbox"/>		Casing Mtrl./Dia.	Screen: Type	Mtrl.	Length	Dia.	Slot Size
Elevation of: (ft. above datum)		Ground Surface	Top of Well Casing	Top of Screen	Bottom of Screen	Ground Water Surface/Date Measured	

DEPTH (feet)	WELL CONSTRUCTION	LITHOLOGY		Penetration Rate (blows/6")	Recovery (%)	Sample Interval (feet)	PID Values (ppm)
		GRAPHIC LOG	VISUAL DESCRIPTION				
5	[Well Construction Diagram]	SC	Sandy Clay: brown, very fine sand, plastic, moist		90%		0.0
							0.0
							0.0
							0.0
							0.0
10	[Well Construction Diagram]	SW	Sand: beige, and gray, very fine sand, saturated		90%		0.0
							0.0
			- sandy silt lens 9' to 11';				0.0
		SM	- color change to gray				0.0
							0.0
15	[Well Construction Diagram]				90%		0.0
							0.0
							0.0
							0.0
							0.0
20	[Well Construction Diagram]						0.0
							0.0
							0.0
							0.0
							0.0



# BORING/WELL CONSTRUCTION LOG



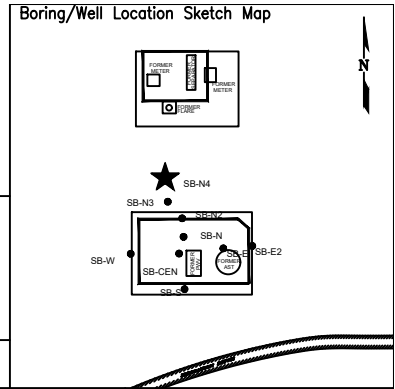
Page 1 of 1

Boring/Well No. <b>SB-W</b>		Total Depth <b>12'</b>	Location <b>Noble Energy, Inc. Kissler 01,03X SWSW Sec. 23, T4N, R64W, 6th PM Weld County, Colorado</b>				
Project No./Name <b>CO23-074 / Noble Kissler 01, 03X</b>		Drilling Contractor/Driller <b>Drill Pro / Terrence, Bennett, Glen, Blake</b>					
Geologist/Office <b>Ethan Black / Fremont Environmental, Inc.</b>		Approved By					
Drilling Equipment/Method <b>Geoprobe</b>		Size/Type of Bit <b>2.5" direct push</b>	Sampling Method <b>direct push</b>	Start/Finish Date <b>11/02/2023</b>			
Well Installed? Yes <input type="checkbox"/> No <input checked="" type="checkbox"/>		Casing Mtrl./Dia.	Screen: Type	Mtrl.	Length	Dia.	Slot Size
Elevation of: (ft. above datum)		Ground Surface	Top of Well Casing	Top of Screen	Bottom of Screen	Ground Water Surface/Date Measured	

DEPTH (feet)	WELL CONSTRUCTION	LITHOLOGY		Penetration Rate (blows/6")	Recovery (%)	Sample Interval (feet)	PID Values (ppm)
		GRAPHIC LOG	VISUAL DESCRIPTION				
5	[Well Construction Diagram]	SC	Sandy Clay: brown, very fine sand, plastic, moist, 3" black lens		90%		0.0
							0.0
							0.0
							0.0
							0.0
10	[Well Construction Diagram]	SW	Sand: tan to gray, very fine to medium sand, wet		80%		0.0
			- increasing silt - wet				0.0
		CL	- 1' clay lens at 10', moist				0.6
15	[Well Construction Diagram]				80%		8.7
							1.3
20	[Well Construction Diagram]		TD 12'				



# BORING/WELL CONSTRUCTION LOG



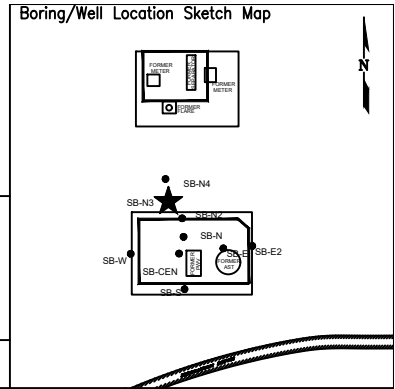
Page 1 of 1

Boring/Well No. <b>SB-N4</b>		Total Depth <b>12'</b>	Location <b>Noble Energy, Inc. Kissler 01,03X SWSW Sec. 23, T4N, R64W, 6th PM Weld County, Colorado</b>			
Project No./Name <b>CO23-074 / Noble Kissler 01, 03X</b>		Drilling Contractor/Driller <b>Drill Pro / Terrence, Bennett, Glen, Blake</b>				
Geologist/Office <b>Ethan Black / Fremont Environmental, Inc.</b>		Approved By				
Drilling Equipment/Method <b>Geoprobe</b>		Size/Type of Bit <b>2.5" direct push</b>		Sampling Method <b>direct push</b>		
				Start/Finish Date <b>11/02/2023</b>		
Well Installed? Yes <input type="checkbox"/> No <input checked="" type="checkbox"/>		Casing Mtrl./Dia.		Screen: Type .   Mtrl. .   Length .   Dia. .   Slot Size .		
Elevation of: (ft. above datum)		Ground Surface	Top of Well Casing	Top of Screen	Bottom of Screen	Ground Water Surface/Date Measured

DEPTH (feet)	WELL CONSTRUCTION	LITHOLOGY		Penetration Rate (blows/6")	Recovery (%)	Sample Interval (feet)	PID Values (ppm)
		GRAPHIC LOG	VISUAL DESCRIPTION				
5	[Well Construction Diagram]	SC	Sandy Clay: brown		98%		0.0
							0.4
							0.0
							0.3
							0.0
10	[Well Construction Diagram]	SW	Sand: beige, and gray, very fine grain, saturated		90%		0.0
							0.1
		CL	Clay from 10' to 11'				0.6
							0.4
							1.7
15	[Well Construction Diagram]		TD 12'		90%		
20	[Well Construction Diagram]						



# BORING/WELL CONSTRUCTION LOG



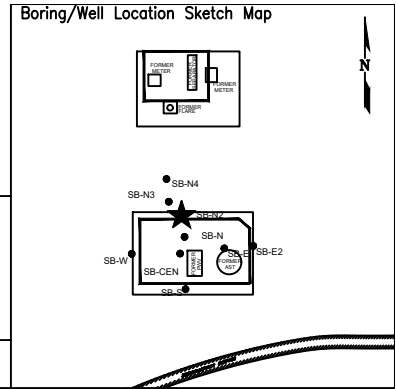
Page 1 of 1

Boring/Well No. <b>SB-N3</b>		Total Depth <b>12'</b>	Location <b>Noble Energy, Inc. Kissler 01,03X SWSW Sec. 23, T4N, R64W, 6th PM Weld County, Colorado</b>				
Project No./Name <b>CO23-074 / Noble Kissler 01, 03X</b>		Drilling Contractor/Driller <b>Drill Pro / Terrence, Bennett, Glen, Blake</b>					
Geologist/Office <b>Ethan Black / Fremont Environmental, Inc.</b>		Approved By					
Drilling Equipment/Method <b>Geoprobe</b>		Size/Type of Bit <b>2.5" direct push</b>		Sampling Method <b>direct push</b>			
				Start/Finish Date <b>11/02/2023</b>			
Well Installed? Yes <input type="checkbox"/> No <input checked="" type="checkbox"/>		Casing Mtrl./Dia.	Screen: Type	Mtrl.	Length	Dia.	Slot Size
Elevation of: (ft. above datum)		Ground Surface	Top of Well Casing	Top of Screen	Bottom of Screen	Ground Water Surface/Date Measured	

DEPTH (feet)	WELL CONSTRUCTION	LITHOLOGY		Penetration Rate (blows/6")	Recovery (%)	Sample Interval (feet)	PID Values (ppm)	
		GRAPHIC LOG	VISUAL DESCRIPTION					
5	[Well Construction Diagram]	SC	Sandy Clay: dark brown, very fine, grained, plastic, moist		90%		0.0	
								0.0
								0.0
								0.0
								0.0
								0.1
								0.0
								0.0
								0.0
								0.0
10	[Well Construction Diagram]	SW	Sand: beige, and gray, very fine grain, saturated		90%		0.5	
								101
								110.8
								92.8
15	[Well Construction Diagram]	CL	Clay from 10' to 11'		90%		92.8	
20	[Well Construction Diagram]		TD 12'		90%			



# BORING/WELL CONSTRUCTION LOG



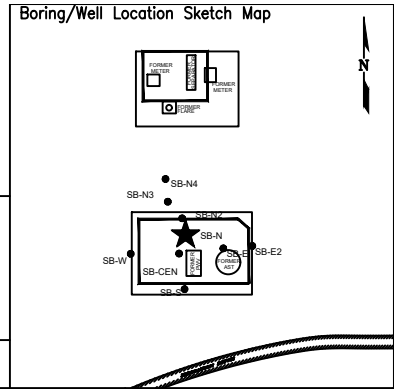
Page 1 of 1

Boring/Well No. <b>SB-N2</b>		Total Depth <b>12'</b>	Location <b>Noble Energy, Inc. Kissler 01,03X SWSW Sec. 23, T4N, R64W, 6th PM Weld County, Colorado</b>				
Project No./Name <b>CO23-074 / Noble Kissler 01, 03X</b>		Drilling Contractor/Driller <b>Drill Pro / Terrence, Bennett, Glen, Blake</b>					
Geologist/Office <b>Ethan Black / Fremont Environmental, Inc.</b>		Approved By					
Drilling Equipment/Method <b>Geoprobe</b>		Size/Type of Bit <b>2.5" direct push</b>		Sampling Method <b>direct push</b>			
				Start/Finish Date <b>11/02/2023</b>			
Well Installed? Yes <input type="checkbox"/> No <input checked="" type="checkbox"/>		Casing Mtrl./Dia.	Screen: Type	Mtrl.	Length	Dia.	Slot Size
Elevation of: (ft. above datum)		Ground Surface	Top of Well Casing	Top of Screen	Bottom of Screen	Ground Water Surface/Date Measured	

DEPTH (feet)	WELL CONSTRUCTION	LITHOLOGY		Penetration Rate (blows/6")	Recovery (%)	Sample Interval (feet)	PID Values (ppm)
		GRAPHIC LOG	VISUAL DESCRIPTION				
5		SC	Sandy Clay: brown to dark brown		95%	0.0	
			0.4				
			0.8				
			1.8				
			4.0				
10		SM	Sandy Silt		90%	1.8	
			wet ~ 8'				
			35.1				
			NA				
			174.6				
15		SM	Sandy Silt		50%	589.8	
			TD 12'				
			124.2				
20							



# BORING/WELL CONSTRUCTION LOG



Page 1 of 1

Boring/Well No. <b>SB-N</b>		Total Depth <b>12'</b>	Location <b>Noble Energy, Inc. Kissler 01,03X SWSW Sec. 23, T4N, R64W, 6th PM Weld County, Colorado</b>			
Project No./Name <b>CO23-074 / Noble Kissler 01, 03X</b>		Drilling Contractor/Driller <b>Drill Pro / Terrence, Bennett, Glen, Blake</b>				
Geologist/Office <b>Ethan Black / Fremont Environmental, Inc.</b>		Approved By				
Drilling Equipment/Method <b>Geoprobe</b>		Size/Type of Bit <b>2.5" direct push</b>		Sampling Method <b>direct push</b>		
				Start/Finish Date <b>11/02/2023</b>		
Well Installed? Yes <input type="checkbox"/> No <input checked="" type="checkbox"/>		Casing Mtrl./Dia.	Screen: Type		Mtrl.	
			Length		Dia.	
				Slot Size		
Elevation of: (ft. above datum)		Ground Surface	Top of Well Casing	Top of Screen	Bottom of Screen	
					Ground Water Surface/Date Measured	

DEPTH (feet)	WELL CONSTRUCTION		LITHOLOGY		Penetration Rate (blows/6")	Recovery (%)	Sample Interval (feet)	PID Values (ppm)
			GRAPHIC LOG	VISUAL DESCRIPTION				
5			SC	Sandy Clay: brown to dark brown, very fine sand, moist		85%		0.0
								0.0
								0.0
								0.0
								0.0
10			NR	No Recovery		5%		NA
								NA
								NA
								12.9
								45.6
15			SC	wet ~ 8'		90%		271.9
								299.9
								115.9
20			SW	Sand: gray, very fine to medium fine, wet TD 12'				

