

SITE ASSESSMENT REPORT
LYSTER E26-23 WELLHEAD AND FLOWLINE

ECMC REMEDIATION # 34506

Prepared for:

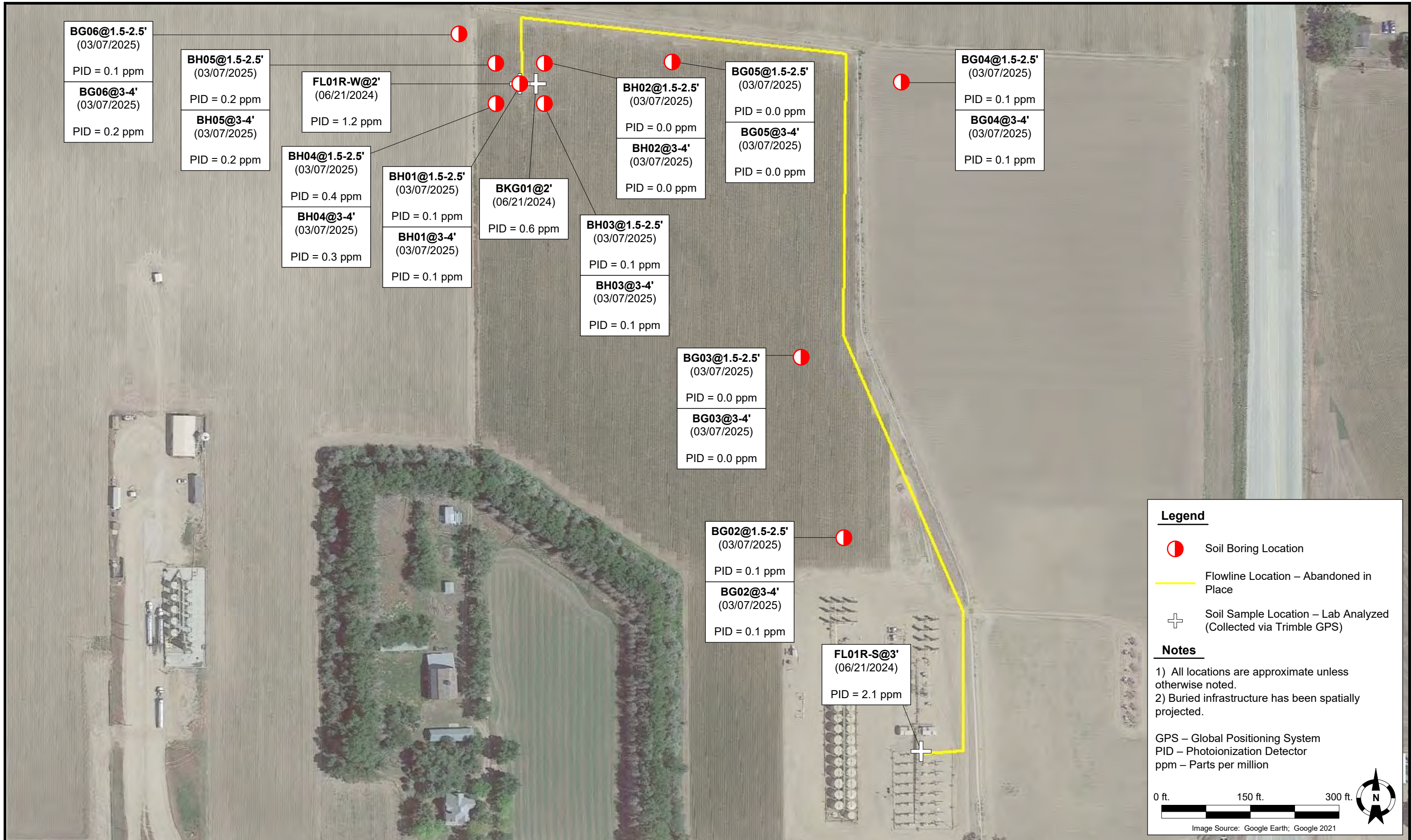


1099 18th Street
Suite 1500
Denver, CO 80202

Prepared by:



4725 Independence Street
Wheat Ridge, CO 80033



DATE: May 29, 2025

DESIGNED BY: J. Whritenour

DRAWN BY: R. Yavinsky



Tasman, Inc.
 4725 Independence Street
 Wheat Ridge, CO 80033

Noble Energy, Inc. – 100322 – DJ Basin
Lyster E26-23 Wellhead and Flowline
 NESE, Section 26, Township 6 North, Range 65 West
 Weld County, Colorado

SOIL SAMPLE LOCATION MAP
 (06/21/2024 & 03/07/2025)

FIGURE 1



TABLE 1
FIELD DATA SUMMARY TABLE
NOBLE ENERGY, INC. - 100322
LYSTER E26-23 WELLHEAD AND FLOWLINE, WELD COUNTY, COLORADO
REM # 34506

Sample ID	Sample Date	Depth (ft. bgs)	GPS Data ⁽¹⁾		PDOP Value	VOC Concentration ⁽²⁾ (ppm)
			Latitude	Longitude		
FL01R-S@3'	06/21/2024	3	40.450268	-104.623022	0.9	2.1
FL01R-W@2'	06/21/2024	2	40.453379	-104.625444	0.9	1.2
BH01@1.5-2.5'	03/07/2025	1.5-2.5	40.453381	-104.625454	NC	0.1
BH01@3-4'	03/07/2025	3-4	40.453381	-104.625454	NC	0.1
BH02@1.5-2.5'	03/07/2025	1.5-2.5	40.453478	-104.625305	NC	0.0
BH02@3-4'	03/07/2025	3-4	40.453478	-104.625305	NC	0.0
BH03@1.5-2.5'	03/07/2025	1.5-2.5	40.453287	-104.625307	NC	0.1
BH03@3-4'	03/07/2025	3-4	40.453287	-104.625307	NC	0.1
BH04@1.5-2.5'	03/07/2025	1.5-2.5	40.453288	-104.625601	NC	0.4
BH04@3-4'	03/07/2025	3-4	40.453288	-104.625601	NC	0.3
BH05@1.5-2.5'	03/07/2025	1.5-2.5	40.453476	-104.625601	NC	0.2
BH05@3-4'	03/07/2025	3-4	40.453476	-104.625601	NC	0.2
BKG01@2'	06/21/2024	2	40.453379	-104.625341	0.9	0.6
BG02@1.5-2.5'	03/07/2025	1.5-2.5	40.451267	-104.623497	NC	0.1
BG02@3-4'	03/07/2025	3-4	40.451267	-104.623497	NC	0.1
BG03@1.5-2.5'	03/07/2025	1.5-2.5	40.452108	-104.623752	NC	0.0
BG03@3-4'	03/07/2025	3-4	40.452108	-104.623752	NC	0.0
BG04@1.5-2.5'	03/07/2025	1.5-2.5	40.453384	-104.623137	NC	0.1
BG04@3-4'	03/07/2025	3-4	40.453384	-104.623137	NC	0.1
BG05@1.5-2.5'	03/07/2025	1.5-2.5	40.453481	-104.624529	NC	0.0
BG05@3-4'	03/07/2025	3-4	40.453481	-104.624529	NC	0.0
BG06@1.5-2.5'	03/07/2025	1.5-2.5	40.453615	-104.625822	NC	0.1
BG06@3-4'	03/07/2025	3-4	40.453615	-104.625822	NC	0.2

1. Global Positioning System (GPS) data is provided in decimal degrees using North American Datum (NAD) 83 UTM Zone 13 North.

2. Volatile organic compound (VOC) concentrations are measured in the field using a photoionization detector (PID).

PDOP = Position Dilution of Precision

ppm = Parts per million

ft. = Feet

bgs = Below ground surface

NC = Not collected



TABLE 2
SUMMARY OF VOLATILE ORGANIC SOIL CHEMISTRY DATA
NOBLE ENERGY, INC. - 100322
LYSTER E26-23 WELLHEAD AND FLOWLINE, WELD COUNTY, COLORADO
REM # 34506

Sample ID	Sample Date	Depth (ft. bgs)	Benzene (mg/kg)	Toluene (mg/kg)	Ethyl-Benzene (mg/kg)	Xylenes (mg/kg)	1,2,4-Trimethyl-Benzene (mg/kg)	1,3,5-Trimethyl-Benzene (mg/kg)	Naphthalene (mg/kg)	TPH (mg/kg)	TPH GRO (mg/kg)	TPH DRO (mg/kg)	TPH ORO (mg/kg)
ECMC Table 915-1 Limits (Residential SSL)			1.2	490	5.8	58	30	27	2	500	500**		
ECMC Table 915-1 Limits (Protection of Groundwater SSL)			0.0026	0.69	0.78	9.9	0.0081	0.0087	0.0038	500	500**		
FL01R-S@3'	06/21/2024	3	<0.0020	<0.0050	<0.0050	<0.010	<0.0050	<0.0050	<0.0038	<50	<0.50	<50	<50
FL01R-W@2'	06/21/2024	2	<0.0020	<0.0050	<0.0050	<0.010	<0.0050	<0.0050	<0.0038	<50	<0.50	<50	<50
BH01@1.5-2.5'	03/07/2025	1.5-2.5	<0.0020	<0.0050	<0.0050	<0.010	<0.0050	<0.0050	<0.0038	<50	<0.50	<50	<50
BH01@3-4'	03/07/2025	3-4	<0.0020	<0.0050	<0.0050	<0.010	<0.0050	<0.0050	<0.0038	<50	<0.50	<50	<50
BH02@1.5-2.5'	03/07/2025	1.5-2.5	<0.0020	<0.0050	<0.0050	<0.010	<0.0050	<0.0050	<0.0038	<50	<0.50	<50	<50
BH02@3-4'	03/07/2025	3-4	<0.0020	<0.0050	<0.0050	<0.010	<0.0050	<0.0050	<0.0038	<50	<0.50	<50	<50
BH03@1.5-2.5'	03/07/2025	1.5-2.5	<0.0020	<0.0050	<0.0050	<0.010	<0.0050	<0.0050	<0.0038	<50	<0.50	<50	<50
BH03@3-4'	03/07/2025	3-4	<0.0020	<0.0050	<0.0050	<0.010	<0.0050	<0.0050	<0.0038	<50	<0.50	<50	<50
BH04@1.5-2.5'	03/07/2025	1.5-2.5	<0.0020	<0.0050	<0.0050	<0.010	<0.0050	<0.0050	<0.0038	<50	<0.50	<50	<50
BH04@3-4'	03/07/2025	3-4	<0.0020	<0.0050	<0.0050	<0.010	<0.0050	<0.0050	<0.0038	<50	<0.50	<50	<50
BH05@1.5-2.5'	03/07/2025	1.5-2.5	<0.0020	<0.0050	<0.0050	<0.010	<0.0050	<0.0050	<0.0038	<50	<0.50	<50	<50
BH05@3-4'	03/07/2025	3-4	<0.0020	<0.0050	<0.0050	<0.010	<0.0050	<0.0050	<0.0038	<50	<0.50	<50	<50

1. Bold values exceed the ECMC Table 915-1 limit(s)
 2. Red & blue highlighted soil analytical values indicate an exceedance of the referenced soil screening level (SSL)
 3. ** Summation of GRO+DRO+ORO must be less than 500 mg/kg
- (<) = Analytical result is less than the indicated laboratory reporting limit.
- TPH-GRO = Total petroleum hydrocarbons - gasoline range organics
 TPH-DRO = Total petroleum hydrocarbons - diesel range organics
 TPH-ORO = Total petroleum hydrocarbons - oil range organics
- mg/kg = Milligrams per kilogram
 ft. = Feet
 bgs = Below ground surface



TABLE 3
SUMMARY OF POLYCYCLIC AROMATIC HYDROCARBON SOIL CHEMISTRY DATA
NOBLE ENERGY, INC. - 100322
LYSTER E26-23 WELLHEAD AND FLOWLINE, WELD COUNTY, COLORADO
REM # 34506

Sample ID	Sample Date	Depth (ft. bgs)	Acenaphthene (mg/kg)	Anthracene (mg/kg)	Benzo (a) Anthracene (mg/kg)	Benzo (a) Pyrene (mg/kg)	Benzo (b) Fluoranthene (mg/kg)	Benzo (k) Fluoranthene (mg/kg)	Chrysene (mg/kg)	Dibenzo (a,h) Anthracene (mg/kg)	Fluoranthene (mg/kg)	Fluorene (mg/kg)	Indeno (1,2,3-cd) Pyrene (mg/kg)	Pyrene (mg/kg)	1-Methyl - Naphthalene (mg/kg)	2-Methyl- Naphthalene (mg/kg)
ECMC Table 915-1 Limits (Residential SSL)			360	1800	1.1	0.11	1.1	11	110	0.11	240	240	1.1	180	18	24
ECMC Table 915-1 Limits (Protection of Groundwater SSL)			0.55	5.8	0.011	0.24	0.3	2.9	9	0.096	8.9	0.54	0.98	1.3	0.006	0.019
FL01R-S@3'	06/21/2024	3	<0.00500	<0.00500	<0.00500	<0.00500	<0.00500	<0.00500	<0.00500	<0.00500	<0.00500	<0.00500	<0.00500	<0.00500	<0.00500	<0.00500
FL01R-W@2'	06/21/2024	2	<0.00500	<0.00500	<0.00500	<0.00500	<0.00500	<0.00500	<0.00500	<0.00500	<0.00500	<0.00500	<0.00500	<0.00500	<0.00500	0.00888
BH01@1.5-2.5'	03/07/2025	1.5-2.5	<0.00500	<0.00500	<0.00500	<0.00500	<0.00500	<0.00500	<0.00500	<0.00500	<0.00500	<0.00500	<0.00500	<0.00500	<0.00500	<0.00500
BH01@3-4'	03/07/2025	3-4	<0.00500	<0.00500	<0.00500	<0.00500	<0.00500	<0.00500	<0.00500	<0.00500	<0.00500	<0.00500	<0.00500	<0.00500	<0.00500	<0.00500
BH02@1.5-2.5'	03/07/2025	1.5-2.5	<0.00500	<0.00500	<0.00500	<0.00500	<0.00500	<0.00500	<0.00500	<0.00500	<0.00500	<0.00500	<0.00500	<0.00500	<0.00500	<0.00500
BH02@3-4'	03/07/2025	3-4	<0.00500	<0.00500	<0.00500	<0.00500	<0.00500	<0.00500	<0.00500	<0.00500	<0.00500	<0.00500	<0.00500	<0.00500	<0.00500	<0.00500
BH03@1.5-2.5'	03/07/2025	1.5-2.5	<0.00500	<0.00500	<0.00500	<0.00500	<0.00500	<0.00500	<0.00500	<0.00500	<0.00500	<0.00500	<0.00500	<0.00500	<0.00500	<0.00500
BH03@3-4'	03/07/2025	3-4	<0.00500	<0.00500	<0.00500	<0.00500	<0.00500	<0.00500	<0.00500	<0.00500	<0.00500	<0.00500	<0.00500	<0.00500	<0.00500	<0.00500
BH04@1.5-2.5'	03/07/2025	1.5-2.5	<0.00500	<0.00500	<0.00500	<0.00500	<0.00500	<0.00500	<0.00500	<0.00500	<0.00500	<0.00500	<0.00500	<0.00500	<0.00500	<0.00500
BH04@3-4'	03/07/2025	3-4	<0.00500	<0.00500	<0.00500	<0.00500	<0.00500	<0.00500	<0.00500	<0.00500	<0.00500	<0.00500	<0.00500	<0.00500	<0.00500	<0.00500
BH05@1.5-2.5'	03/07/2025	1.5-2.5	<0.00500	<0.00500	<0.00500	<0.00500	<0.00500	<0.00500	<0.00500	<0.00500	<0.00500	<0.00500	<0.00500	<0.00500	<0.00500	<0.00500
BH05@3-4'	03/07/2025	3-4	<0.00500	<0.00500	<0.00500	<0.00500	<0.00500	<0.00500	<0.00500	<0.00500	<0.00500	<0.00500	<0.00500	<0.00500	<0.00500	<0.00500

- Bold values exceed the ECMC Table 915-1 limit(s)
 - Red & blue highlighted soil analytical values indicate an exceedance of the referenced soil screening level (SSL)
- (<) = Analytical result is less than the indicated laboratory reporting limit.
 mg/kg = Milligrams per kilogram
 ft. = Feet
 bgs = Below ground surface



TABLE 4
SUMMARY OF SOIL SUITABILITY FOR RECLAMATION
NOBLE ENERGY, INC. - 100322
LYSTER E26-23 WELLHEAD AND FLOWLINE, WELD COUNTY, COLORADO
REM # 34506

Sample ID	Sample Date	Depth (ft. bgs)	pH (Standard Units)	EC (mmhos/cm)	SAR (Standard Units)	Boron (mg/L)
ECMC Table 915-1 Soil Suitability Limits			6 - 8.3	<4	<6	2
FL01R-S@3'	06/21/2024	3	7.94	0.378	0.365	<2.00
FL01R-W@2'	06/21/2024	2	8.39	0.278	0.374	<2.00
BH01@1.5-2.5'	03/07/2025	1.5-2.5	8.64	0.234	0.620	<2.00
BH01@3-4'	03/07/2025	3-4	8.66	0.210	0.420	<2.00
BH02@1.5-2.5'	03/07/2025	1.5-2.5	8.67	0.264	0.883	<2.00
BH02@3-4'	03/07/2025	3-4	8.44	0.377	0.927	<2.00
BH03@1.5-2.5'	03/07/2025	1.5-2.5	8.38	1.46	2.81	<2.00
BH03@3-4'	03/07/2025	3-4	8.56	0.741	1.13	<2.00
BH04@1.5-2.5'	03/07/2025	1.5-2.5	8.24	1.25	1.30	<2.00
BH04@3-4'	03/07/2025	3-4	8.26	0.945	1.26	<2.00
BH05@1.5-2.5'	03/07/2025	1.5-2.5	8.21	0.970	1.31	<2.00
BH05@3-4'	03/07/2025	3-4	8.51	0.994	0.802	<2.00
BKG01@2'	06/21/2024	2	7.99	2.22	1.42	<2.00
BG02@1.5-2.5'	03/07/2025	1.5-2.5	8.39	0.341	2.00	<2.00
BG02@3-4'	03/07/2025	3-4	8.31	0.686	0.697	<2.00
BG03@1.5-2.5'	03/07/2025	1.5-2.5	8.40	0.613	1.33	<2.00
BG03@3-4'	03/07/2025	3-4	8.55	0.573	1.63	<2.00
BG04@1.5-2.5'	03/07/2025	1.5-2.5	8.34	0.496	0.378	<2.00
BG04@3-4'	03/07/2025	3-4	8.39	0.221	0.574	<2.00
BG05@1.5-2.5'	03/07/2025	1.5-2.5	8.57	0.313	1.36	<2.00
BG05@3-4'	03/07/2025	3-4	8.80	0.197	0.376	<2.00
BG06@1.5-2.5'	03/07/2025	1.5-2.5	8.32	0.884	2.15	<2.00
BG06@3-4'	03/07/2025	3-4	8.27	1.12	2.47	<2.00
Maximum Background Concentration			8.80	-	-	-

1. **Bold** faced values exceed the ECMC Table 915-1 limit(s), but are within background concentrations.

2. **Red** faced values exceed the ECMC Table 915-1 limit(s) and native background concentrations.

3. **Brown** highlighted soil analytical values indicate a regulatory exceedance.

mg/L = Milligrams per liter

ft. = Feet

bgs = Below ground surface

mmhos/cm = Millimohs per centimeter



TABLE 5
SUMMARY OF METALS IN SOIL CHEMISTRY DATA
NOBLE ENERGY, INC. - 100322
LYSTER E26-23 WELLHEAD AND FLOWLINE, WELD COUNTY, COLORADO
REM # 34506

Sample ID	Sample Date	Depth (ft. bgs)	Arsenic (mg/kg)	Barium (mg/kg)	Cadmium (mg/kg)	Chromium (VI) ⁽⁴⁾ (mg/kg)	Copper (mg/kg)	Lead (mg/kg)	Nickel (mg/kg)	Selenium (mg/kg)	Silver (mg/kg)	Zinc (mg/kg)
ECMC Table 915-1 Limits (Residential SSL)			0.68	15000	71	0.3	3100	400	1500	390	390	23000
ECMC Table 915-1 Limits (Protection of Groundwater SSL)			0.29	82	0.38	0.00067	46	14	26	0.26	0.8	370
FL01R-S@3'	06/21/2024	3	4.01	157	<0.200	<0.30	6.89	6.44	6.88	<0.260	0.0263	26.3
FL01R-W@2'	06/21/2024	2	4.92	166	0.268	<0.30	9.77	8.35	7.36	<0.260	0.0255	31.0
BH01@1.5-2.5'	03/07/2025	1.5-2.5	5.26	144	0.203	<0.30	5.62	6.45	8.97	<0.260	0.0211	21.4
BH01@3-4'	03/07/2025	3-4	4.14	90.0	0.280	<0.30	5.44	6.78	8.19	<0.260	<0.0200	20.2
BH02@1.5-2.5'	03/07/2025	1.5-2.5	7.54	129	0.233	<0.30	6.85	6.61	9.26	<0.260	0.0201	23.1
BH02@3-4'	03/07/2025	3-4	5.45	307	0.256	<0.30	5.18	5.91	9.06	<0.260	<0.0200	20.7
BH03@1.5-2.5'	03/07/2025	1.5-2.5	6.60	393	0.321	<0.30	5.26	6.26	8.17	<0.260	<0.0200	20.0
BH03@3-4'	03/07/2025	3-4	3.20	126	<0.200	<0.30	3.96	4.59	5.98	<0.260	<0.0200	16.0
BH04@1.5-2.5'	03/07/2025	1.5-2.5	7.99	96.2	0.213	<0.30	5.63	8.02	8.19	<0.260	0.0201	19.5
BH04@3-4'	03/07/2025	3-4	5.54	479	0.205	<0.30	5.33	6.44	8.24	<0.260	<0.0200	23.2
BH05@1.5-2.5'	03/07/2025	1.5-2.5	6.96	375	0.211	<0.30	5.09	7.22	7.64	<0.260	<0.0200	19.5
BH05@3-4'	03/07/2025	3-4	5.13	89.1	0.252	<0.30	5.72	7.30	8.93	<0.260	<0.0200	24.0
BKG01@2'	06/21/2024	2	5.43	363	<0.200	<0.30	4.83	6.30	6.31	<0.260	<0.0200	21.0
BG02@1.5-2.5'	03/07/2025	1.5-2.5	7.15	133	0.259	<0.30	6.96	6.28	10.2	<0.260	0.0373	24.5
BG02@3-4'	03/07/2025	3-4	3.98	91.3	0.285	<0.30	4.88	5.84	7.53	<0.260	<0.0200	20.9
BG03@1.5-2.5'	03/07/2025	1.5-2.5	3.88	101	<0.200	<0.30	5.67	5.95	7.84	<0.260	<0.0200	21.5
BG03@3-4'	03/07/2025	3-4	6.90	126	0.264	<0.30	6.93	6.34	10.5	<0.260	0.0297	26.6
BG04@1.5-2.5'	03/07/2025	1.5-2.5	4.30	69.2	0.239	<0.30	7.36	7.55	7.54	<0.260	0.0341	28.9
BG04@3-4'	03/07/2025	3-4	4.88	129	0.292	<0.30	7.44	7.62	11.6	<0.260	0.0329	33.2
BG05@1.5-2.5'	03/07/2025	1.5-2.5	4.19	61.4	<0.200	<0.30	4.70	5.50	6.32	<0.260	<0.0200	18.1
BG05@3-4'	03/07/2025	3-4	2.90	52.3	<0.200	<0.30	4.21	3.69	4.99	<0.260	<0.0200	13.0
BG06@1.5-2.5'	03/07/2025	1.5-2.5	6.98	198	0.316	<0.30	6.81	7.10	9.87	<0.260	0.0264	22.4
BG06@3-4'	03/07/2025	3-4	7.88	228	0.343	<0.30	7.28	7.35	9.81	<0.260	0.0265	22.3
1.25x Maximum Background Concentration			9.85	454	-	-	-	-	-	-	-	-

1. **Bold** faced values exceed the ECMC Table 915-1 limit(s), but are within 1.25x background concentrations.
2. **Red** faced values exceed the ECMC Table 915-1 limit(s) and native background concentrations.
3. Red & blue highlighted soil analytical values indicate an exceedance of the referenced soil screening level (SSL).
4. Compound falls within ECMC Table 915-1 Footnote 9.
5. Non-detect background results accounted for in the highest background concentration by using the reporting limit.
6. * Indicates laboratory minimum detection limit in excess of SSL

ECMC = Energy & Carbon Management Commission

(<) = Analytical result is less than the indicated laboratory reporting limit.

mg/kg = Milligrams per kilogram

ft. = Feet

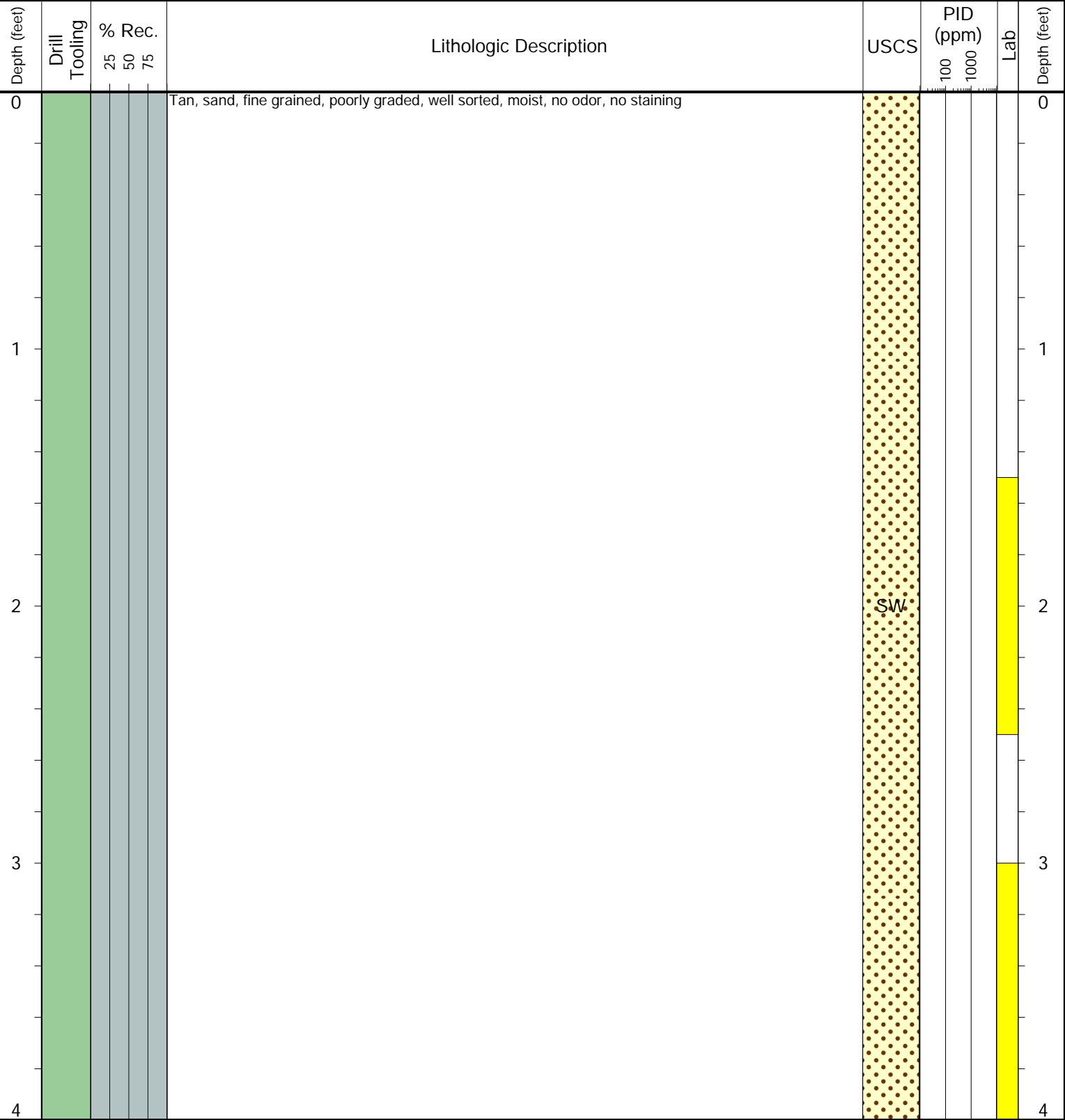
bgs = Below ground surface



CLIENT: Noble
LOGGED BY: Billy Morrow
PROJECT MANAGER: Allan Engelhardt
DRILLING CONTRACTOR: Tasman
DRILLING EQUIPMENT: Hand Auger
DRILL BIT SIZE (INCHES): 2.875
DATE STARTED - COMPLETED: 3/7/2025 - 3/7/2025
TOTAL WELL DEPTH (FT. BGS): 4
DEPTH TO WATER (FT. BGS): Not Encountered

Lyster E26-23 Flowline
BORING ID: BH01
LOCATION: Source
LATITUDE (NAD 83): 40.453381
LONGITUDE (NAD 83): -104.625454
GROUND ELEVATION (FT. AMSL): Not Measured
ABANDONMENT METHOD: Native Material

4725 Independence St.
Wheat Ridge, CO 80033



Drilling / Sample Method:

- Macro-Core
- Hand Auger
- Expendable Well Tip
- HydroPunch Groundwater Sampler

Laboratory Sample Types:

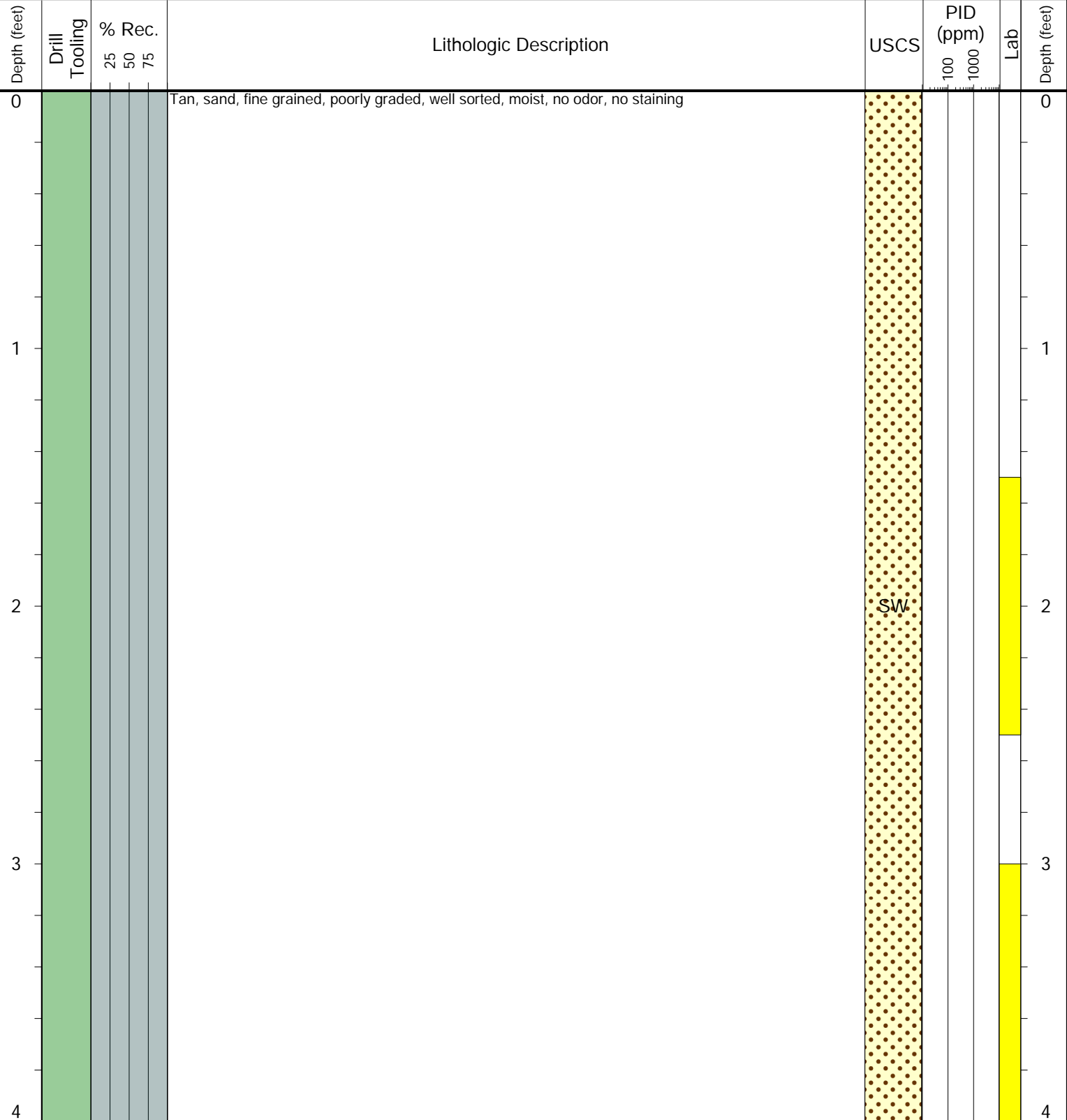
- Geotechnical Lab
- Analytical Chemistry Lab
- Geotechnical & Analytical Chemistry Lab



CLIENT: Noble
LOGGED BY: Billy Morrow
PROJECT MANAGER: Allan Engelhardt
DRILLING CONTRACTOR: Tasman
DRILLING EQUIPMENT: Hand Auger
DRILL BIT SIZE (INCHES): 2.875
DATE STARTED - COMPLETED: 3/7/2025 - 3/7/2025
TOTAL WELL DEPTH (FT. BGS): 4
DEPTH TO WATER (FT. BGS): Not Encountered

Lyster E26-23 Flowline
BORING ID: BH02
LOCATION: NE of Source
LATITUDE (NAD 83): 40.453478
LONGITUDE (NAD 83): -104.625305
GROUND ELEVATION (FT. AMSL): Not Measured
ABANDONMENT METHOD: Native Material

4725 Independence St.
Wheat Ridge, CO 80033



Drilling / Sample Method:

- Macro-Core
- Hand Auger
- Expendable Well Tip
- HydroPunch Groundwater Sampler

Laboratory Sample Types:

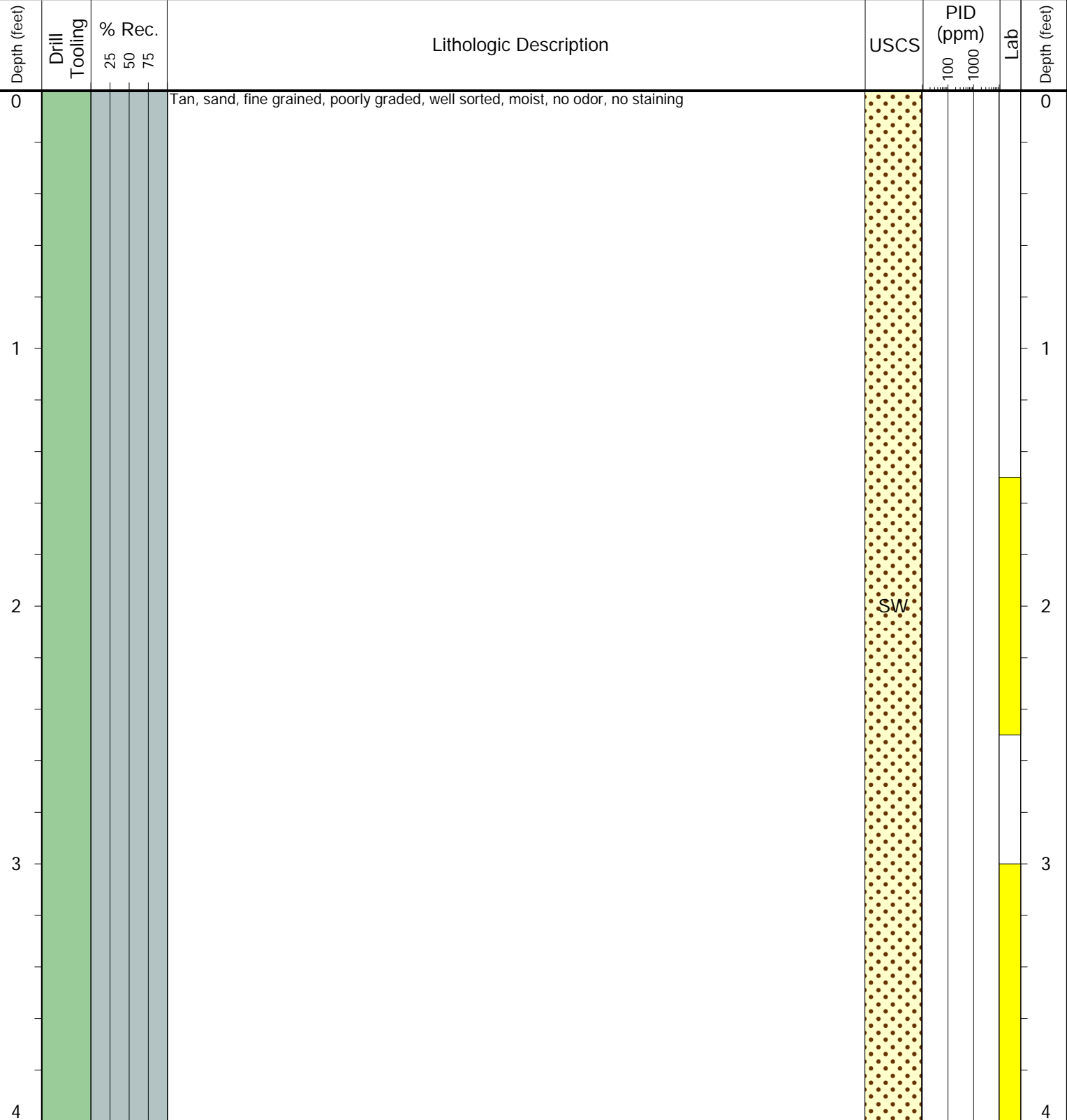
- Geotechnical Lab
- Analytical Chemistry Lab
- Geotechnical & Analytical Chemistry Lab



CLIENT: Noble
LOGGED BY: Billy Morrow
PROJECT MANAGER: Allan Engelhardt
DRILLING CONTRACTOR: Tasman
DRILLING EQUIPMENT: Hand Auger
DRILL BIT SIZE (INCHES): 2.875
DATE STARTED - COMPLETED: 3/7/2025 - 3/7/2025
TOTAL WELL DEPTH (FT. BGS): 4
DEPTH TO WATER (FT. BGS): Not Encountered

Lyster E26-23 Flowline
BORING ID: BH03
LOCATION: SE of Source
LATITUDE (NAD 83): 40.453287
LONGITUDE (NAD 83): -104.625307
GROUND ELEVATION (FT. AMSL): Not Measured
ABANDONMENT METHOD: Native Material

4725 Independence St.
Wheat Ridge, CO 80033



Drilling / Sample Method:

- Macro-Core
- Hand Auger
- Expendable Well Tip
- HydroPunch Groundwater Sampler

Laboratory Sample Types:

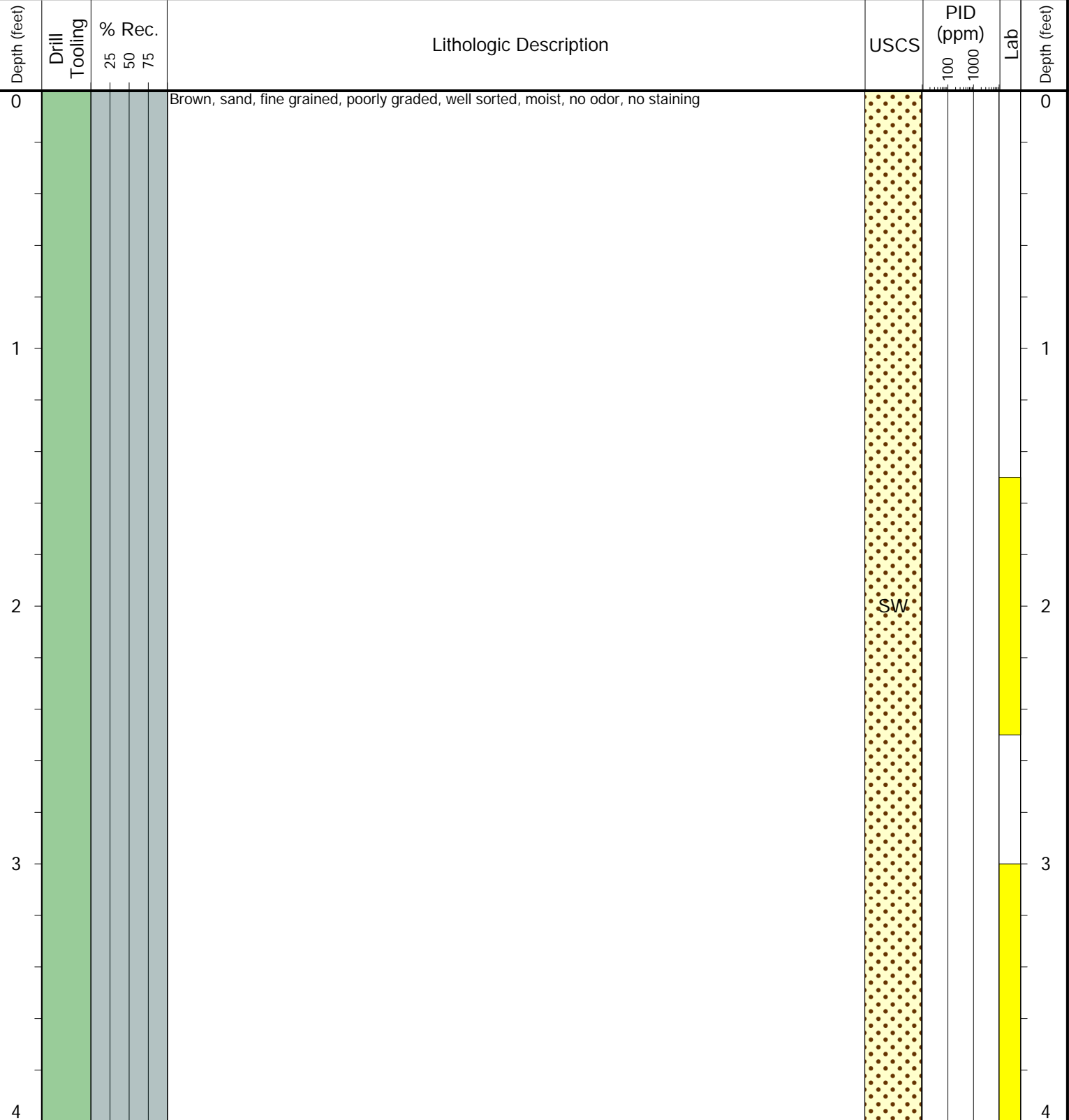
- Geotechnical Lab
- Analytical Chemistry Lab
- Geotechnical & Analytical Chemistry Lab



CLIENT: Noble
LOGGED BY: Billy Morrow
PROJECT MANAGER: Allan Engelhardt
DRILLING CONTRACTOR: Tasman
DRILLING EQUIPMENT: Hand Auger
DRILL BIT SIZE (INCHES): 2.875
DATE STARTED - COMPLETED: 3/7/2025 - 3/7/2025
TOTAL WELL DEPTH (FT. BGS): 4
DEPTH TO WATER (FT. BGS): Not Encountered

Lyster E26-23 Flowline
BORING ID: BH04
LOCATION: SW of Source
LATITUDE (NAD 83): 40.453288
LONGITUDE (NAD 83): -104.625601
GROUND ELEVATION (FT. AMSL): Not Measured
ABANDONMENT METHOD: Native Material

4725 Independence St.
Wheat Ridge, CO 80033



Drilling / Sample Method:

- Macro-Core
- Expendable Well Tip
- Hand Auger
- HydroPunch Groundwater Sampler

Laboratory Sample Types:

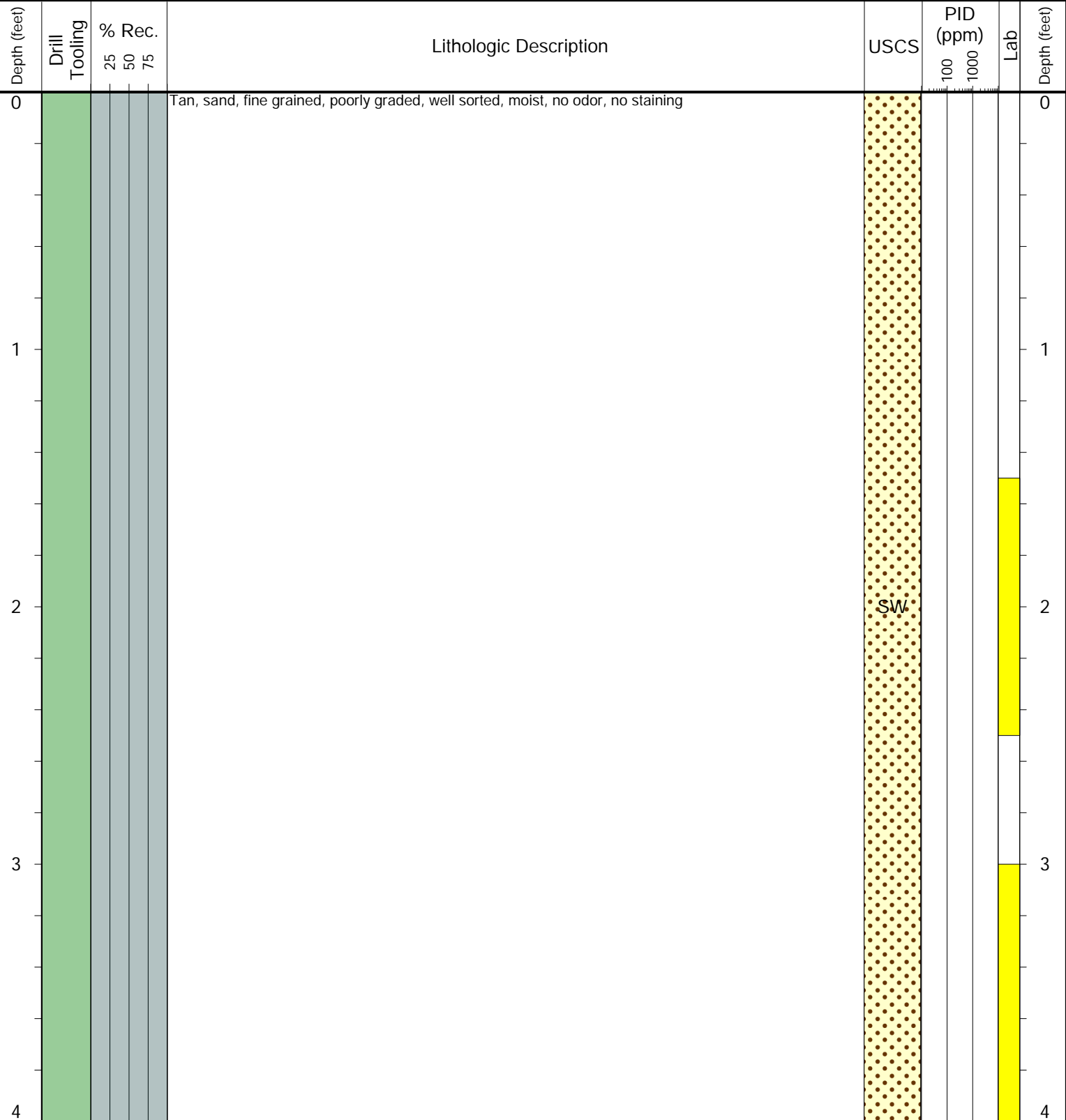
- Geotechnical Lab
- Analytical Chemistry Lab
- Geotechnical & Analytical Chemistry Lab



CLIENT: Noble
LOGGED BY: Billy Morrow
PROJECT MANAGER: Allan Engelhardt
DRILLING CONTRACTOR: Tasman
DRILLING EQUIPMENT: Hand Auger
DRILL BIT SIZE (INCHES): 2.875
DATE STARTED - COMPLETED: 3/7/2025 - 3/7/2025
TOTAL WELL DEPTH (FT. BGS): 4
DEPTH TO WATER (FT. BGS): Not Encountered

Lyster E26-23 Flowline
BORING ID: BH05
LOCATION: NW of Source
LATITUDE (NAD 83): 40.453476
LONGITUDE (NAD 83): -104.625601
GROUND ELEVATION (FT. AMSL): Not Measured
ABANDONMENT METHOD: Native Material

4725 Independence St.
Wheat Ridge, CO 80033



Drilling / Sample Method:

- Macro-Core
- Hand Auger
- Expendable Well Tip
- HydroPunch Groundwater Sampler

Laboratory Sample Types:

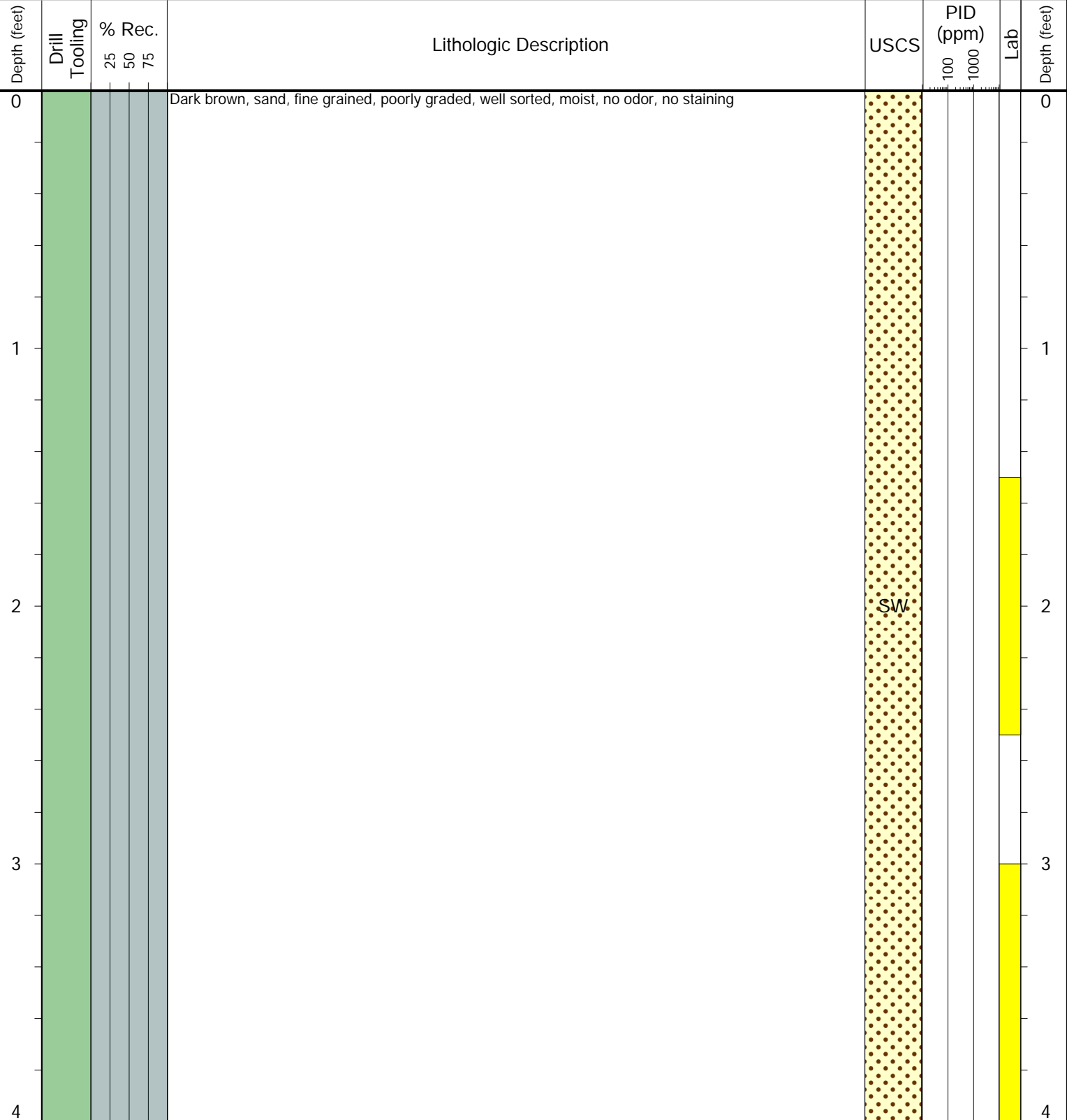
- Geotechnical Lab
- Analytical Chemistry Lab
- Geotechnical & Analytical Chemistry Lab



CLIENT: Noble
LOGGED BY: Billy Morrow
PROJECT MANAGER: Allan Engelhardt
DRILLING CONTRACTOR: Tasman
DRILLING EQUIPMENT: Hand Auger
DRILL BIT SIZE (INCHES): 2.875
DATE STARTED - COMPLETED: 3/7/2025 - 3/7/2025
TOTAL WELL DEPTH (FT. BGS): 4
DEPTH TO WATER (FT. BGS): Not Encountered

Lyster E26-23 Flowline
BORING ID: BG02
LOCATION: SE of Source
LATITUDE (NAD 83): 40.451267
LONGITUDE (NAD 83): -104.623497
GROUND ELEVATION (FT. AMSL): Not Measured
ABANDONMENT METHOD: Native Material

4725 Independence St.
Wheat Ridge, CO 80033



Drilling / Sample Method:

- Macro-Core
- Hand Auger
- Expendable Well Tip
- HydroPunch Groundwater Sampler

Laboratory Sample Types:

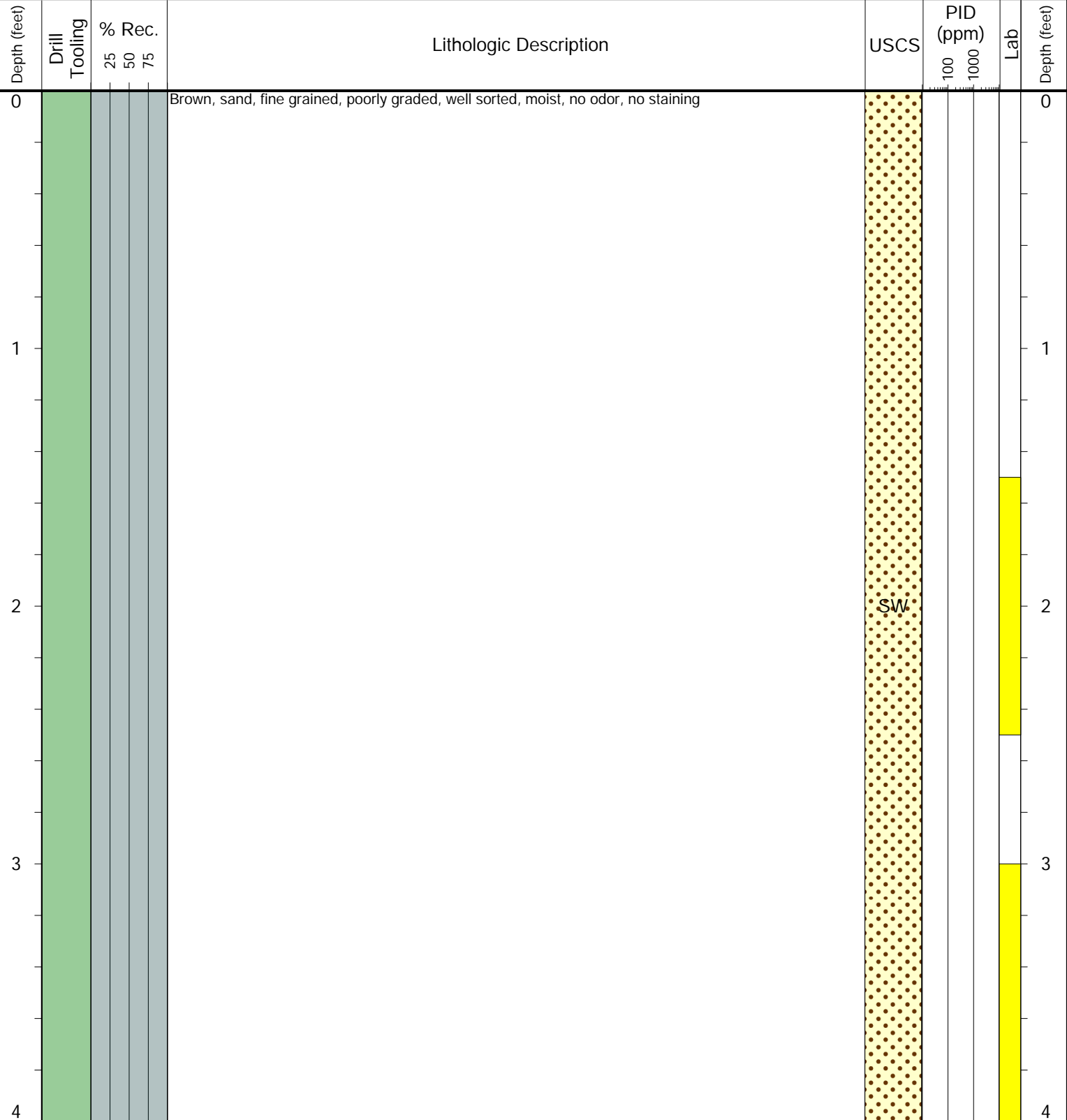
- Geotechnical Lab
- Analytical Chemistry Lab
- Geotechnical & Analytical Chemistry Lab



CLIENT: Noble
LOGGED BY: Billy Morrow
PROJECT MANAGER: Allan Engelhardt
DRILLING CONTRACTOR: Tasman
DRILLING EQUIPMENT: Hand Auger
DRILL BIT SIZE (INCHES): 2.875
DATE STARTED - COMPLETED: 3/7/2025 - 3/7/2025
TOTAL WELL DEPTH (FT. BGS): 4
DEPTH TO WATER (FT. BGS): Not Encountered

Lyster E26-23 Flowline
BORING ID: BG03
LOCATION: SE of Source
LATITUDE (NAD 83): 40.452108
LONGITUDE (NAD 83): -104.623752
GROUND ELEVATION (FT. AMSL): Not Measured
ABANDONMENT METHOD: Native Material

4725 Independence St.
Wheat Ridge, CO 80033



Drilling / Sample Method:

- Macro-Core
- Hand Auger
- Expendable Well Tip
- HydroPunch Groundwater Sampler

Laboratory Sample Types:

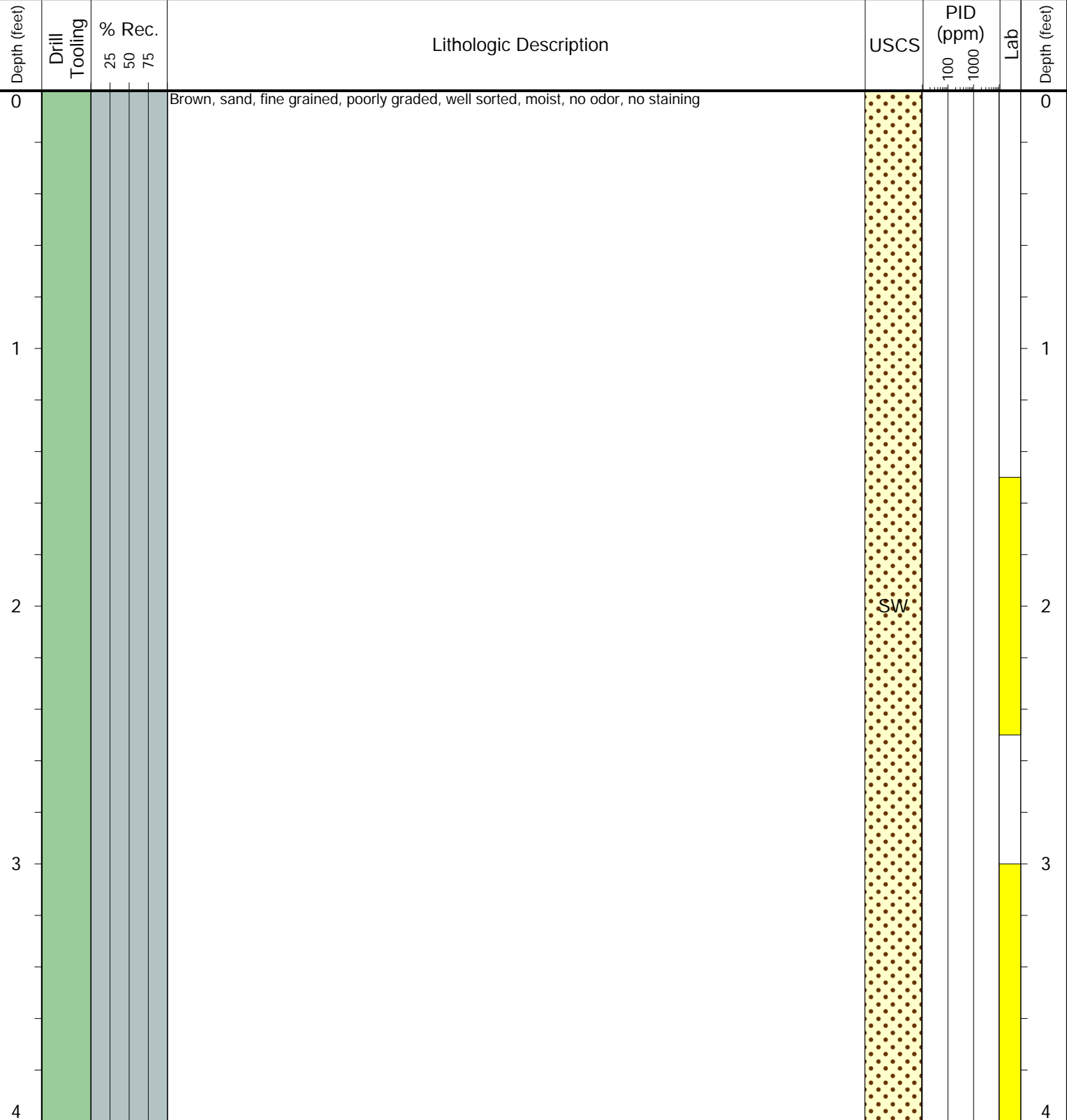
- Geotechnical Lab
- Analytical Chemistry Lab
- Geotechnical & Analytical Chemistry Lab



CLIENT: Noble
LOGGED BY: Billy Morrow
PROJECT MANAGER: Allan Engelhardt
DRILLING CONTRACTOR: Tasman
DRILLING EQUIPMENT: Hand Auger
DRILL BIT SIZE (INCHES): 2.875
DATE STARTED - COMPLETED: 3/7/2025 - 3/7/2025
TOTAL WELL DEPTH (FT. BGS): 4
DEPTH TO WATER (FT. BGS): Not Encountered

Lyster E26-23 Flowline
BORING ID: BG04
LOCATION: E of Source
LATITUDE (NAD 83): 40.453384
LONGITUDE (NAD 83): -104.623137
GROUND ELEVATION (FT. AMSL): Not Measured
ABANDONMENT METHOD: Native Material

4725 Independence St.
Wheat Ridge, CO 80033



Drilling / Sample Method:

- Macro-Core
- Hand Auger
- Expendable Well Tip
- HydroPunch Groundwater Sampler

Laboratory Sample Types:

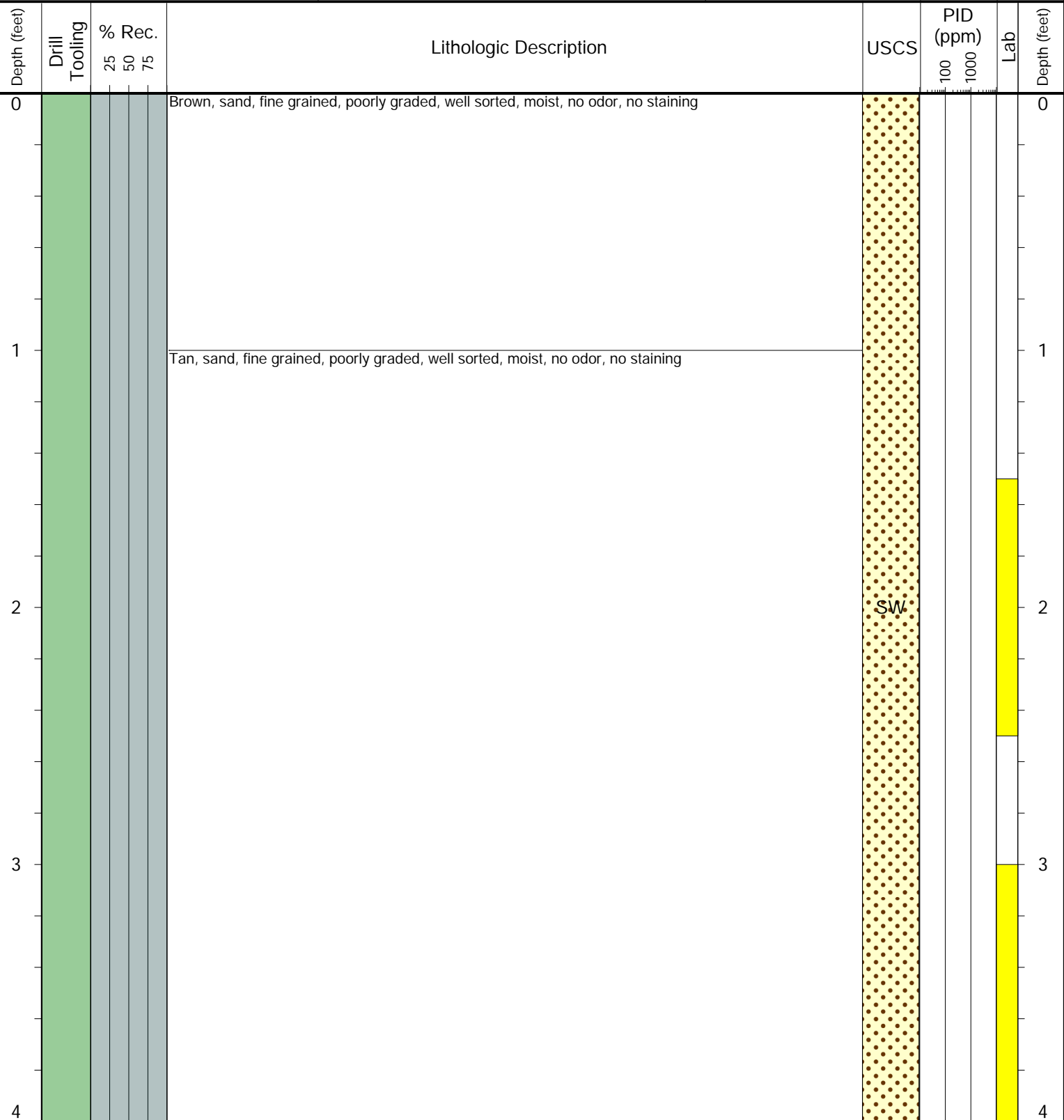
- Geotechnical Lab
- Analytical Chemistry Lab
- Geotechnical & Analytical Chemistry Lab



CLIENT: Noble
LOGGED BY: Billy Morrow
PROJECT MANAGER: Allan Engelhardt
DRILLING CONTRACTOR: Tasman
DRILLING EQUIPMENT: Hand Auger
DRILL BIT SIZE (INCHES): 2.875
DATE STARTED - COMPLETED: 3/7/2025 - 3/7/2025
TOTAL WELL DEPTH (FT. BGS): 4
DEPTH TO WATER (FT. BGS): Not Encountered

Lyster E26-23 Flowline
BORING ID: BG05
LOCATION: E of Source
LATITUDE (NAD 83): 40.453481
LONGITUDE (NAD 83): -104.624529
GROUND ELEVATION (FT. AMSL): Not Measured
ABANDONMENT METHOD: Native Material

4725 Independence St.
Wheat Ridge, CO 80033



Drilling / Sample Method:

- Macro-Core
- Hand Auger
- Expendable Well Tip
- HydroPunch Groundwater Sampler

Laboratory Sample Types:

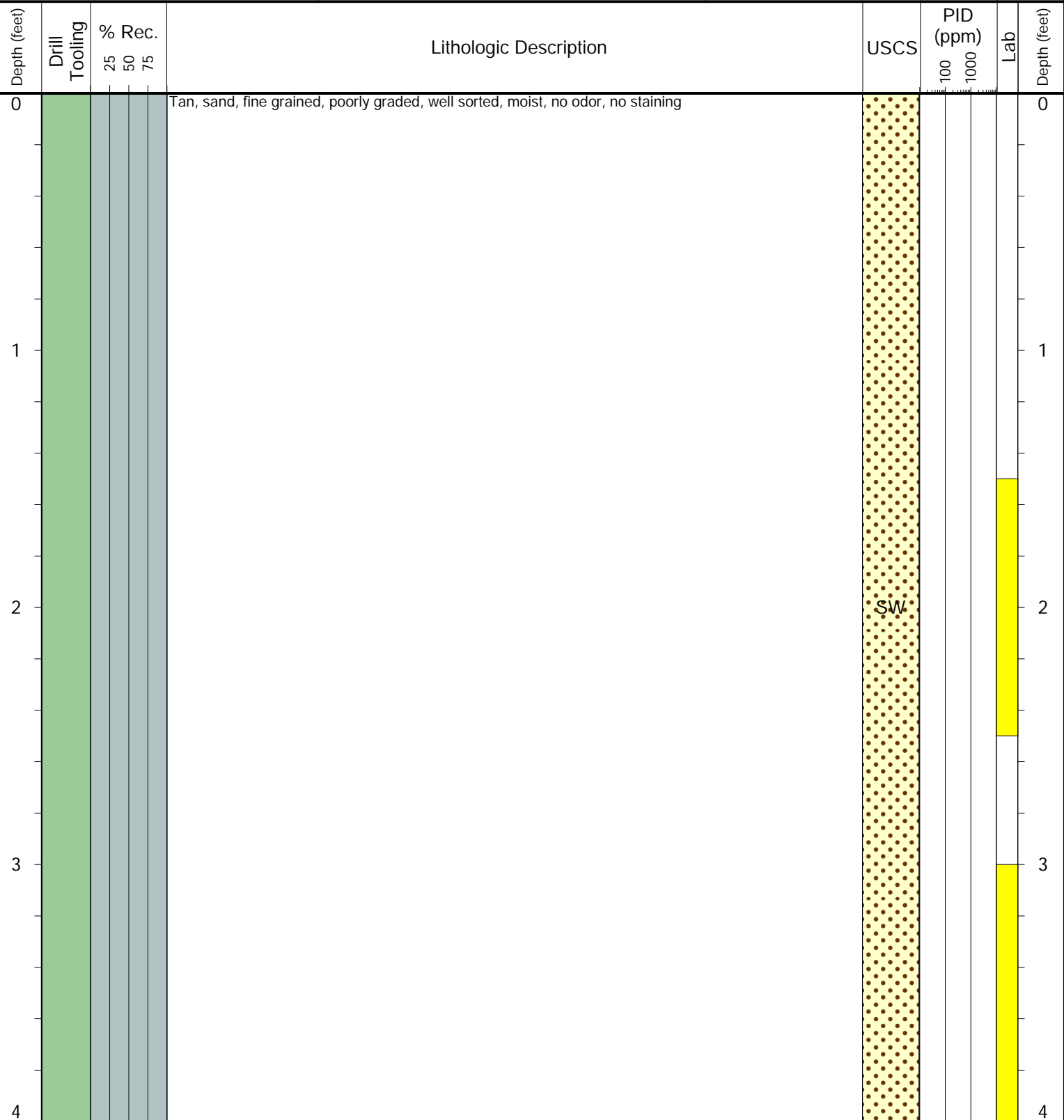
- Geotechnical Lab
- Analytical Chemistry Lab
- Geotechnical & Analytical Chemistry Lab



CLIENT: Noble
LOGGED BY: Billy Morrow
PROJECT MANAGER: Allan Engelhardt
DRILLING CONTRACTOR: Tasman
DRILLING EQUIPMENT: Hand Auger
DRILL BIT SIZE (INCHES): 2.875
DATE STARTED - COMPLETED: 3/7/2025 - 3/7/2025
TOTAL WELL DEPTH (FT. BGS): 4
DEPTH TO WATER (FT. BGS): Not Encountered

Lyster E26-23 Flowline
BORING ID: BG06
LOCATION: NE of Source
LATITUDE (NAD 83): 40.453615
LONGITUDE (NAD 83): -104.625822
GROUND ELEVATION (FT. AMSL): Not Measured
ABANDONMENT METHOD: Native Material

4725 Independence St.
Wheat Ridge, CO 80033



Drilling / Sample Method:

- Macro-Core
- Hand Auger
- Expendable Well Tip
- HydroPunch Groundwater Sampler

Laboratory Sample Types:

- Geotechnical Lab
- Analytical Chemistry Lab
- Geotechnical & Analytical Chemistry Lab