

SITE NAME / REM: BLEHM N 26-8, REM 38109								DATE: 3/11, 3/12, 4/28/2025	WEATHER: 30s and partly cloudy		
TYPE OF WORK: Flowline decommissioning								CLIENT: Chevron			
LAT/LONG: 40.372680, -104.853770								PERSONNEL: EW and JW			
ESTIMATED DEPTH TO GROUNDWATER: Groundwater not encountered								OTHER OBSERVATIONS: FL01-07 and FL01-R-W re-sampled due to lab analysis error			
SOIL SAMPLING								FACILITY INFRASTRUCTURE			
Date	Soil Sample ID	Soil Type	PID (ppm)	Staining (Y/N)	Odor (Y/N)	Time	Sent to lab on Ice? (Y/N)	EQUIPMENT		Quantity	
								Above Ground Storage Tank (AST)		-	
3/11/2025	FL01-R-S@3'	SM	1.4	N	N	9:00	Y	Buried or Partially Buried Vessel		-	
3/11/2025	FL01-02@3'	SM	0.0	N	N	9:40	Y	Separator		-	
3/11/2025	FL01-03@3'	SM	3.9	N	N	10:15	Y	Emission Control Device (ECD)		-	
3/11/2025	FL01-04@3'	SM	0.2	N	N	10:30	Y	Dump Line		-	
3/11/2025	FL01-05@3'	SM	0.2	N	N	10:50	Y	Wellhead		-	
3/11/2025	FL01-06@3'	SM	0.1	N	N	11:20	Y	Flowline		1	
3/11/2025	PH01-FL01	SM	0.0	N	N	10:00	NA	Third Party Equipment:		-	
3/11/2025	PH02-FL01	SM	0.6	N	N	11:40	NA	Other:		-	
3/11/2025	PH03-FL01	SM	0.3	N	N	12:30	NA	Soil Loads Removed			
3/11/2025	PH04-FL01	SM	0.2	N	N	13:15	NA	IMPACTED SOIL IDENTIFIED? No			
3/11/2025	PH05-FL01	SM	3.0	N	N	14:15	NA	ESTIMATED VOLUME OF IMPACTS:			
3/12/2025	PH07-FL01	SM	4.5	N	N	17:20	NA	Date	Number	CY	
3/12/2025	PH08-FL01	SM	0.2	N	N	17:40	NA				
3/12/2025	PH09-FL01	SM	0.7	N	N	17:45	NA				
3/12/2025	FL01-07@3'	SM	0	N	N	17:30	Y				
3/12/2025	FL01-R-W@3'	CL	0.3	N	N	17:50	Y				
3/12/2025	BKG01@3'	SM	0.1	N	N	8:50	Y	Total Removed			
3/12/2025	BKG02@3'	SM	0.7	N	N	11:40	Y	Disposal Facility:			
4/28/2025	FL01-07@3'	SC	0.0	N	N	12:45	Y	Groundwater Recovery			
4/28/2025	FL01-R-W@3'	SC	0.0	N	N	12:55	Y	DATE GW ENCOUNTERED:	DEPTH:		
								GROUNDWATER IN CONTACT WITH IMPACTED SOIL?			
								LNAPL OR SHEEN OBSERVED ON GW?			
GROUNDWATER SAMPLING								Date	BBLs		
Date/Time	Groundwater Sample ID	Depth Collected	Turbid?	Sheen?	Odor?	Photo?	Sent to lab on Ice? (Y/N)				
								Total Removed			
								Disposal Facility:			





CDH Consulting, LLC
Thornton, Colorado
720.431.7468
www.CDHConsult.com

Flowline Closure Investigation and Environmental Summary

BLEHM N 26-8 Flowline
ECMC Remediation Project #38109
Weld County, Colorado

Attachments:

Figure 1 – Site Location Map

Figure 2 – Soil Sample and Field Screening Locations Map

Figure 3 – Supplemental Site Investigation Map

Table 1 – Field Data Summary Table

Table 2 – Summary of Volatile Organic Soil Chemistry Data

Table 3 – Summary of Polycyclic Aromatic Hydrocarbon Soil Chemistry Data

Table 4 – Summary of Soil Suitability for Reclamation

Table 5 – Summary of Metals in Soil Chemistry Data

Attachment A: Photographic Log

Attachment B: Flowline Closure Checklist



CDH Consulting, LLC
Thornton, Colorado
720.431.7468
www.CDHConsult.com

FIGURES

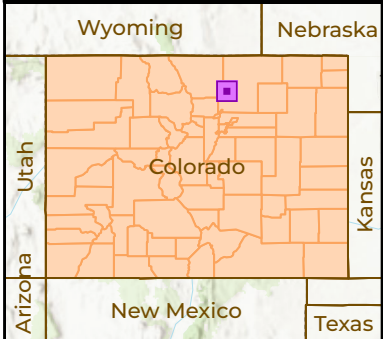
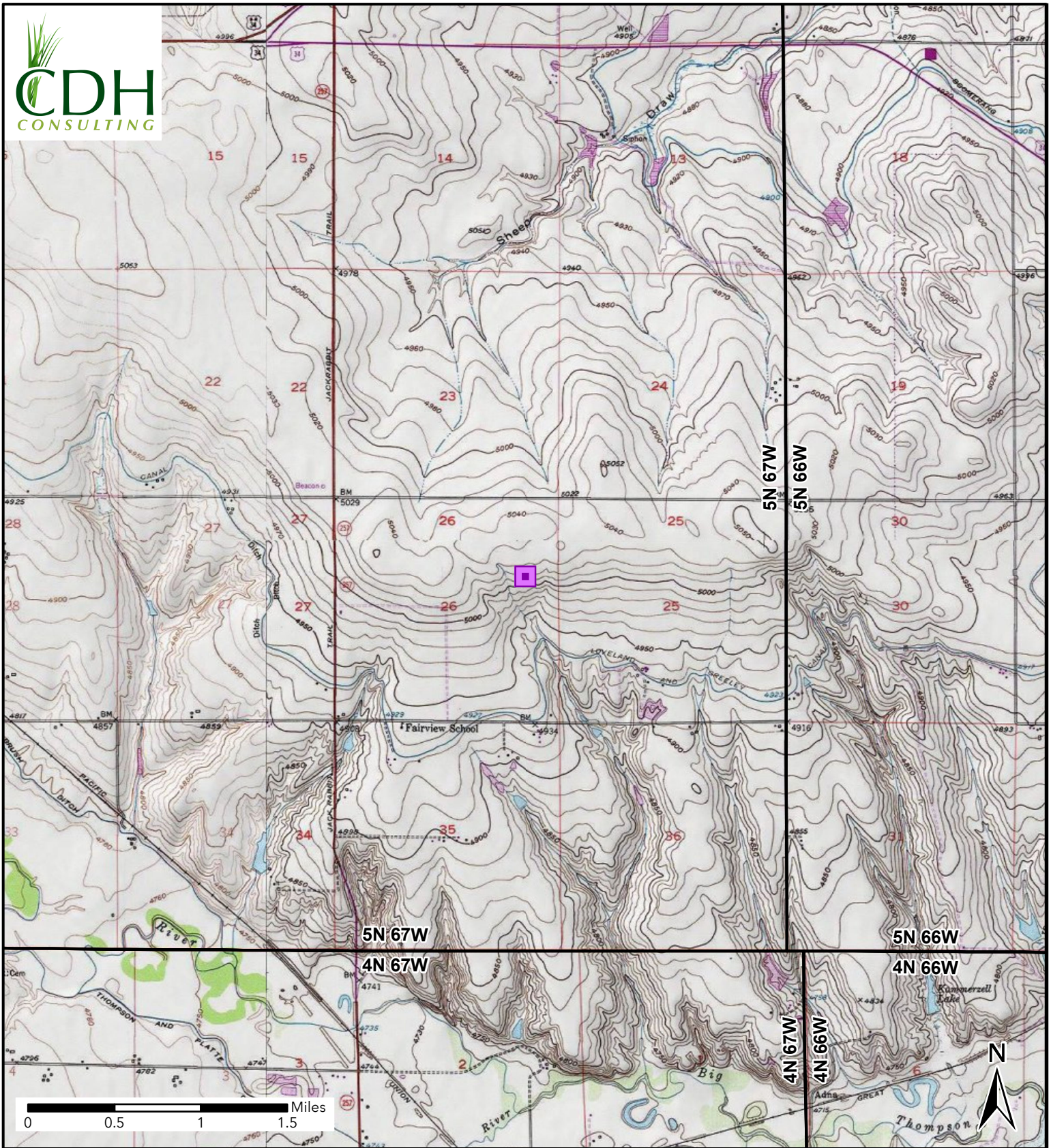
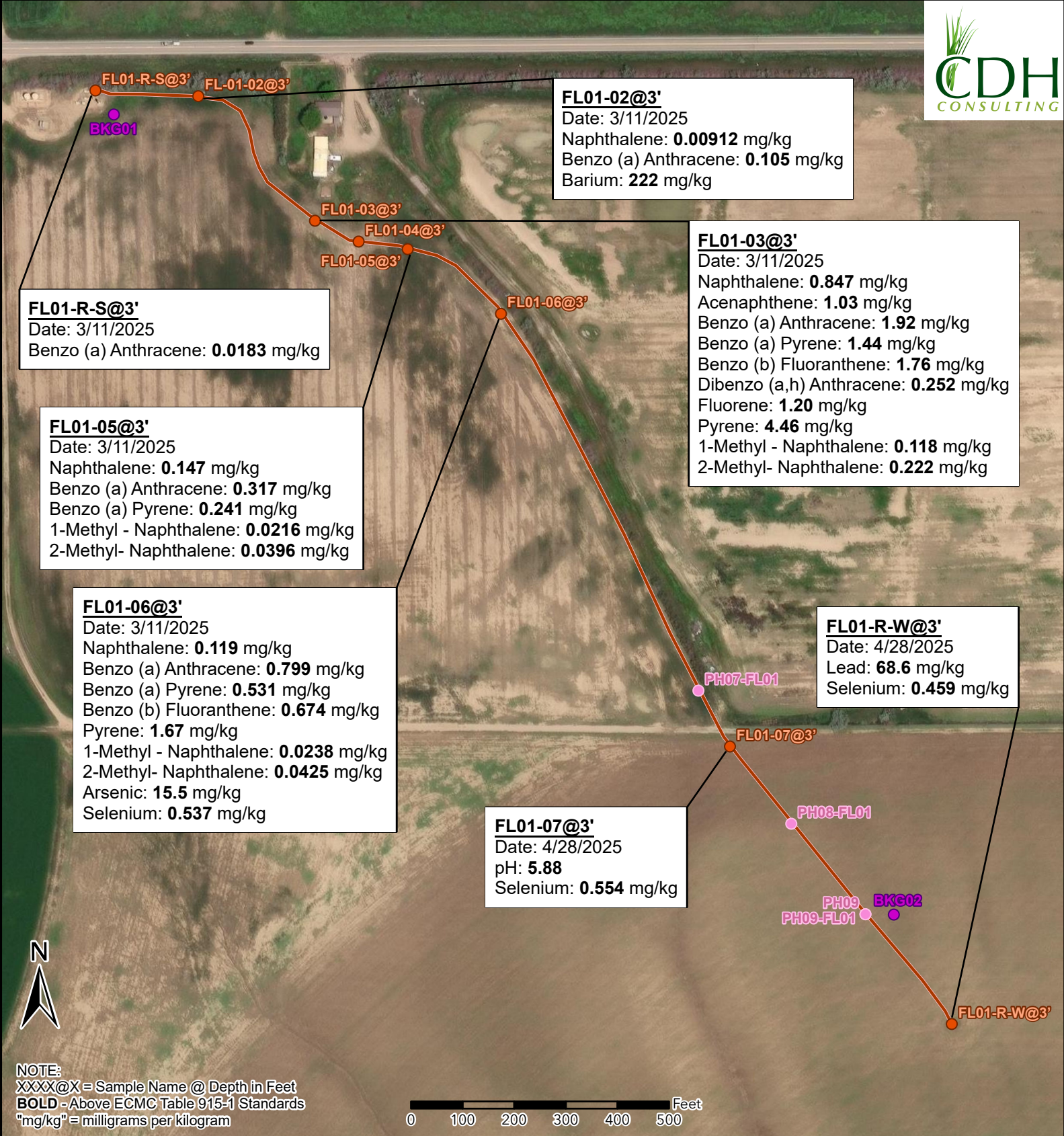


Figure 1
Site Location
BLEHM N 26-8 FL
SENE-SEC 26-T5N-R67W
Weld County, Colorado
Noble Energy Inc.

 Site Location

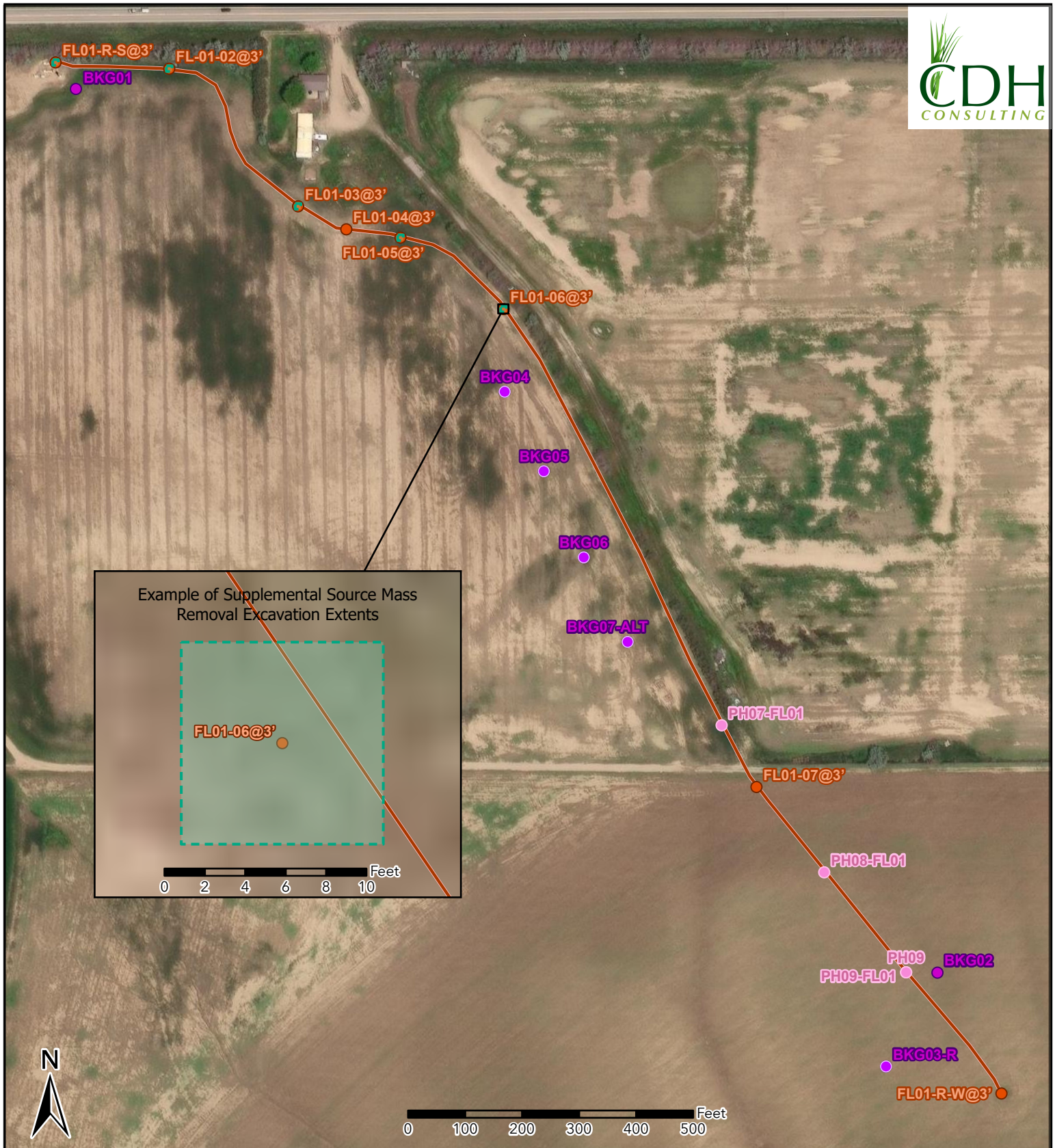


NOTE:
 XXXX@X = Sample Name @ Depth in Feet
BOLD - Above ECMC Table 915-1 Standards
 "mg/kg" = milligrams per kilogram



Figure 2
Sample Locations Map
 BLEHM N 26-8 FL
 SENE-SEC 26-T5N-R67W
 Weld County, Colorado
 Noble Energy Inc.

- Site Location
- Soil Sample
- Background Sample
- Screening Point
- Flowline Removed



Example of Supplemental Source Mass Removal Excavation Extents



Figure 3 Supplemental Source Mass Removal Map

BLEHM N 26-8
SENE-SEC 26-T5N-R67W
Weld County, Colorado
Noble Energy Inc.

- Soil Sample
- Screening Point
- Background Sample
- Proposed Background Sample
- 10' x 10' Proposed Excavation



CDH Consulting, LLC
Thornton, Colorado
720.431.7468
www.CDHConsult.com

TABLES

TABLE 1
FIELD DATA SUMMARY TABLE
NOBLE 100322
BLEHM N 26-8, WELD COUNTY, COLORADO
REM # 38109

Sample ID	Sample Date	Depth (ft)	GPS Data		PDOP Value	VOC Concentration (ppm)
			Latitude/Longitude			
FL01-R-S@3'	3/11/2025	3	40.377682	-104.859685	1.000000	1.4
FL01-02@3'	3/11/2025	3	40.377648	-104.85897	1.000000	0.0
FL01-03@3'	3/11/2025	3	40.376981	-104.858165	1.000000	3.9
FL01-04@3'	3/11/2025	3	40.376868	-104.857862	0.900000	0.2
FL01-05@3'	3/11/2025	3	40.376826	-104.857522	0.900000	0.2
FL01-06@3'	3/11/2025	3	40.376479	-104.856876	1.000000	0.1
PH01-FL01	3/11/2025	3	40.377342	-104.8586603	NM	0.0
PH02-FL01	3/11/2025	3	40.375792	-104.856348	0.900000	0.6
PH03-FL01	3/11/2025	3	40.376229	-104.856694	1.000000	0.3
PH04-FL01	3/11/2025	3	40.375419	-104.856111	0.900000	0.2
PH05-FL01	3/11/2025	3	40.375030	-104.855885	1.200000	3.0
PH07-FL01	3/12/2025	3	40.374468	-104.855522	0.900000	4.5
PH08-FL01	3/12/2025	3	40.373756	-104.854883	0.900000	0.2
PH09-FL01	3/12/2025	3	40.373272	-104.854372	1.000000	0.7
FL01-07@3'	3/12/2025	3	40.374169	-104.855306	0.900000	0.0
FL01-R-W@3'	3/12/2025	3	40.372685	-104.853778	1.000000	0.0
FL01-07@3'	4/28/2025	3	40.374169	-104.855306	0.900000	0.0
FL01-R-W@3'	4/28/2025	3	40.372685	-104.853778	1.000000	0.0
BKG01@3'	3/12/2025	3	40.377554	-104.859558	1.000000	0.1
BKG02@3'	3/12/2025	3	40.373269	-104.854175	0.900000	0.7

1. Global Positioning System (GPS) data is provided in decimal degrees using North American Datum (NAD) 83 UTMZone 13 North.
 2. Volatile organic compound (VOC) concentrations are measured in the field using a photoionization detector (PID).
 3. FL01-07@3' & FL01-R-W@3' re-sampled due to error in lab testing. Samples collected on 3/12/2025 were not analyzed for Table 915-1 organics.
- PDOP = Position Dilution of Precision
ppm = Parts per million
ft = Feet

TABLE 2
SUMMARY OF VOLATILE ORGANIC SOIL CHEMISTRY DATA
NOBLE 100322
BLEHM N 26-8, WELD COUNTY, COLORADO
REM # 38109

Sample ID	Sample Date	Depth (ft)	Benzene (mg/kg)	Toluene (mg/kg)	Ethyl-Benzene (mg/kg)	Xylenes (mg/kg)	1,2,4-Trimethyl-Benzene (mg/kg)	1,3,5-Trimethyl-Benzene (mg/kg)	Naphthalene (mg/kg)	TPH (mg/kg)	TPH GRO (mg/kg)	TPH DRO (mg/kg)	TPH ORO (mg/kg)
ECMC Table 915-1 Limits (Residential SSL)			1.2	490	5.8	58	30	27	2	500	500**		
ECMC Table 915-1 Limits (Protection of Groundwater SSL)			0.0026	0.69	0.78	9.9	0.0081	0.0087	0.0038	500	500**		
FL01-R-5@3'	3/11/2025	3	<0.00200	<0.00200	<0.00200	<0.00200	<0.00200	<0.00200	<0.00128	<125.200	<0.200	<25.0	<100
FL01-02@3'	3/11/2025	3	<0.00200	0.00300	<0.00200	<0.00200	<0.00200	<0.00200	0.00912	28.7	<0.200	28.7	<100
FL01-03@3'	3/11/2025	3	<0.00200	0.00426	<0.00200	0.00230	<0.00200	<0.00200	0.847	47.5	<0.200	47.5	<100
FL01-04@3'	3/11/2025	3	<0.00200	<0.00200	<0.00200	<0.00200	<0.00200	<0.00200	<0.00366	<125.200	<0.200	<25.0	<100
FL01-05@3'	3/11/2025	3	<0.00200	<0.00200	<0.00200	<0.00200	<0.00200	<0.00200	0.147	<125.200	<0.200	<25.0	<100
FL01-06@3'	3/11/2025	3	<0.00200	<0.00200	<0.00200	<0.00200	<0.00200	<0.00200	0.119	30.4	<0.200	30.4	<100
FL01-07@3'	3/12/2025	3	NA	NA	NA	NA	NA	NA	NA	NA	NA	NA	NA
FL01-07@3'	3/12/2025	3	NA	NA	NA	NA	NA	NA	NA	NA	NA	NA	NA
FL01-07@3'	4/28/2025	3	<0.00100	<0.00500	<0.00250	<0.00650	<0.00500	<0.00500	<0.0200	3.48	0.0400	<4.00	3.44
FL01-R-W@3'	4/28/2025	3	<0.00100	<0.00500	<0.00250	<0.00650	<0.00500	<0.00500	<0.0200	79.1	0.0329	36.6	42.5

- Bold values exceed the ECMC Table 915-1 limit(s)
 - Red & blue highlighted soil analytical values indicate an exceedance of the referenced soil screening level (SSL)
 - * Indicates laboratory minimum detection limit in excess of SSL
 - ** Summation of GRO+DRO+ORO must be less than 500 mg/kg
- (<) = Analytical result is less than the indicated laboratory reporting limit.
TPH-GRO = Total petroleum hydrocarbons - gasoline range organics
TPH-DRO = Total petroleum hydrocarbons - diesel range organics
TPH-ORO = Total petroleum hydrocarbons - oil range organics
mg/kg = Milligrams per kilogram
ft = Feet
AP = Analysis pending
NA = Not analyzed

TABLE 3
SUMMARY OF POLYCYCLIC AROMATIC HYDROCARBON SOIL CHEMISTRY DATA
NOBLE 100322
BLEHM N 26-8, WELD COUNTY, COLORADO
REM # 38109

Sample ID	Sample Date	Depth (ft)	Acenaphthene (mg/kg)	Anthracene (mg/kg)	Benzo (a) Anthracene (mg/kg)	Benzo (a) Pyrene (mg/kg)	Benzo (b) Fluoranthene (mg/kg)	Benzo (k) Fluoranthene (mg/kg)	Chrysene (mg/kg)	Dibenzo (a,h) Anthracene (mg/kg)	Fluoranthene (mg/kg)	Fluorene (mg/kg)	Indeno (1,2,3-cd) Pyrene (mg/kg)	Pyrene (mg/kg)	1-Methyl - Naphthalene (mg/kg)	2-Methyl- Naphthalene (mg/kg)
ECMC Table 915-1 Limits (Residential SSL)			360	1800	1.1	0.11	1.1	11	110	0.11	240	240	1.1	180	18	24
ECMC Table 915-1 Limits (Protection of Groundwater SSL)			0.55	5.8	0.011	0.24	0.3	2.9	9	0.096	8.9	0.54	0.98	1.3	0.006	0.019
FL01-R-5@3'	3/11/2025	3	0.00428	0.0128	0.0183	0.0132	0.0163	0.00583	0.0183	0.00194	0.0502	0.00661	0.00739	0.0377	<0.00389	<0.00389
FL01-02@3'	3/11/2025	3	0.0262	0.102	0.105	0.0710	0.0865	0.0333	0.120	0.0115	0.302	0.0405	0.0389	0.223	0.00278	0.00436
FL01-03@3'	3/11/2025	3	1.03	1.90	1.92	1.44	1.76	0.613	1.90	0.252	5.73	1.20	0.918	4.46	0.118	0.222
FL01-04@3'	3/11/2025	3	<0.00366	0.00513	0.00989	0.00805	0.00989	0.00476	0.0106	0.00403	0.0201	0.0022	0.00586	0.0157	<0.00366	<0.00366
FL01-05@3'	3/11/2025	3	0.170	0.285	0.317	0.241	0.291	0.108	0.307	0.0407	1.01	0.201	0.146	0.774	0.0216	0.0396
FL01-06@3'	3/11/2025	3	0.249	0.795	0.799	0.531	0.674	0.240	0.780	0.0882	2.21	0.363	0.311	1.67	0.0238	0.0425
FL01-07@3'	3/12/2025	3	NA	NA	NA	NA	NA	NA	NA	NA	NA	NA	NA	NA	NA	NA
FL01-R-W@3'	3/12/2025	3	NA	NA	NA	NA	NA	NA	NA	NA	NA	NA	NA	NA	NA	NA
FL01-07@3'	4/28/2025	3	<0.00600	<0.00600	<0.00600	<0.00600	<0.00600	<0.00600	<0.00600	<0.00600	<0.00600	<0.00600	<0.00600	<0.00600	<0.0200	<0.0200
FL01-R-W@3'	4/28/2025	3	<0.00600	<0.00600	<0.00600	<0.00600	<0.00600	<0.00600	<0.00600	<0.00600	<0.00600	<0.00600	<0.00600	<0.00600	<0.0200	<0.0200

1. Bold values exceed the ECMC Table 915-1 limit(s)

2. Red & blue highlighted soil analytical values indicate an exceedance of the referenced soil screening level (SSL)

3. * Indicates laboratory minimum detection limit in excess of SSL

4. ** Summation of GRO+DRO+ORO must be less than 500 mg/kg

(<) = Analytical result is less than the indicated laboratory reporting limit.

TPH-GRO = Total petroleum hydrocarbons - gasoline range organics

TPH-DRO = Total petroleum hydrocarbons - diesel range organics

TPH-ORO = Total petroleum hydrocarbons - oil range organics

mg/kg = Milligrams per kilogram

ft = Feet

AP = Analysis pending

NA = Not analyzed

TABLE 4
SUMMARY OF SOIL SUITABILITY FOR RECLAMATION
NOBLE 100322
BLEHM N 26-8, WELD COUNTY, COLORADO
REM # 38109

Sample ID	Sample Date	Depth (ft)	pH (Standard Units)	EC (mmhos/cm)	SAR (Standard Units)	Boron (mg/L)
ECMC Table 915-1 Soil Suitability Limits			6 - 8.3	<4	<6	2
FL01-R-S@3'	3/11/2025	3	8.19	0.433	0.400	0.415
FL01-02@3'	3/11/2025	3	8.05	1.70	1.54	0.802
FL01-03@3'	3/11/2025	3	8.30	0.431	0.440	0.570
FL01-04@3'	3/11/2025	3	8.18	0.442	0.311	0.592
FL01-05@3'	3/11/2025	3	8.27	0.366	0.514	0.509
FL01-06@3'	3/11/2025	3	8.41	0.322	0.583	0.656
FL01-07@3'	3/12/2025	3	5.88	1.29	1.04	0.438
FL01-R-W@3'	3/12/2025	3	8.29	1.27	0.884	0.556
FL01-07@3'	4/28/2025	3	7.90	0.529	0.771	0.22
FL01-R-W@3'	4/28/2025	3	7.63	1.98	0.293	0.342
BKG01@3'	3/12/2025	3	8.58	1.06	3.24	0.929
BKG02@3'	3/12/2025	3	8.39	0.920	1.13	0.333
Maximum Background Concentration			8.58	1.06	3.24	0.929

1. **Bold** faced values exceed the ECMC Table 915-1 limit(s), but are within background concentrations.
2. **Bold** faced values exceed the ECMC Table 915-1 limit(s) and native background concentrations.
3. Brown highlighted soil analytical values indicate a regulatory exceedance.

TABLE 5
SUMMARY OF METALS IN SOIL CHEMISTRY DATA
NOBLE 100322
BLEHM N 26-8, WELD COUNTY, COLORADO
REM # 38109

Sample ID	Sample Date	Depth (ft)	Arsenic (mg/kg)	Barium (mg/kg)	Cadmium (mg/kg)	Chromium (VI) (mg/kg)	Copper (mg/kg)	Lead (mg/kg)	Nickel (mg/kg)	Selenium (mg/kg)	Silver (mg/kg)	Zinc (mg/kg)
ECMC Table 915-1 Limits (Residential SSL)			0.68	15000	71	0.3	3100	400	1500	390	390	23000
ECMC Table 915-1 Limits (Protection of Groundwater SSL)			0.29	82	0.38	0.00067	46	14	26	0.26	0.8	370
FL01-R-S@3'	3/11/2025	3	4.61	151	0.183	<0.340 *	10.8	9.65	12.6	<0.230	<0.0885	42.4
FL01-02@3'	3/11/2025	3	6.68	222	0.260	<0.331 *	15.3	13.0	18.7	0.299	<0.0898	64.4
FL01-03@3'	3/11/2025	3	6.10	190	0.209	<0.297 *	12.7	11.1	15.6	<0.241	<0.0927	52.4
FL01-04@3'	3/11/2025	3	6.28	193	0.239	<0.338 *	13.9	12.0	16.8	0.248	<0.0900	56.6
FL01-05@3'	3/11/2025	3	6.73	204	0.250	<0.349 *	15.2	13.4	18.9	<0.255	<0.0982	64.5
FL01-06@3'	3/11/2025	3	15.5	199	0.246	<0.379 *	14.6	13.3	18.6	0.537	<0.0850	63.7
FL01-07@3'	3/12/2025	3	6.22	162	0.248	<0.411 *	14.1	10.9	17.2	0.375	<0.0914	56.4
FL01-R-W@3'	3/12/2025	3	5.17	144	0.208	<0.331 *	12.9	15.5	13.8	0.295	<0.0884	48.7
FL01-07@3'	4/28/2025	3	5.29	196	0.307	<1.00 *	13.4	10.6	17.4	0.554	<0.500	54.6
FL01-R-W@3'	4/28/2025	3	4.36	145	0.296	<1.00 *	12	68.6	14	0.459	<0.500	46.9
BKG01@3'	3/12/2025	3	5.91	142	0.195	<0.432 *	12.3	9.75	15.7	0.325	<0.0976	48.2
BKG02@3'	3/12/2025	3	5.15	168	0.193	<0.296 *	11.8	9.30	14.7	0.235	<0.0852	45.4
1.25x Maximum Background Concentration			7.39	210	0.244	NA	15.4	12.2	19.6	0.406	NA	60.3

1. **Bold** faced values exceed the ECMC Table 915-1 limit(s), but are within 1.25x background concentrations.
2. **Red** faced values exceed the ECMC Table 915-1 limit(s) and native background concentrations.
3. Red & blue highlighted soil analytical values indicate an exceedance of the referenced soil screening level (SSL).
4. Non-detect background results accounted for in the highest background concentration by using the reporting limit.
5. FL01-07@3' and FL01-R-W@3' were re-sampled due to an error in laboratory testing. The samples collected on 3/12/2025 were not analyzed for Table 915-1 organics.

ECMC = Energy & Carbon Management Commission

(<) = Analytical result is less than the indicated laboratory reporting limit.

mg/kg = Milligrams per kilogram

ft = Feet

* Indicates laboratory minimum detection limit in excess of SSL

NA = Not analyzed



CDH Consulting, LLC
Thornton, Colorado
720.431.7468
www.CDHConsult.com

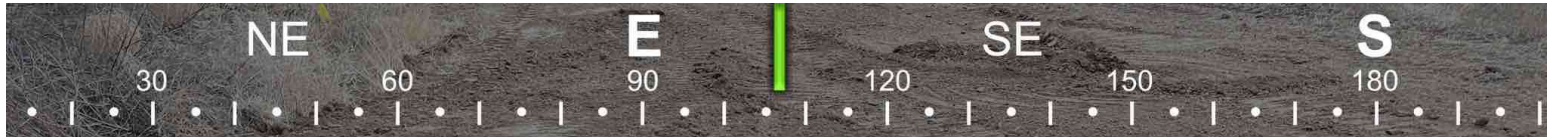
ATTACHMENT A PHOTOGRAPHIC LOG

Attachment A - Photographic Log

BLEHM N 26-8 flowline

Chevron REM# 38109

3/11, 3/12, 4/28/2025



☉ 107°E (T) ● 40.377665°, -104.859700° ±32ft ▲ 5041ft



Photo 1: View of sample location FL01-R-S, facing east

Attachment A - Photographic Log

BLEHM N 26-8 flowline

Chevron REM# 38109

3/11, 3/12, 4/28/2025

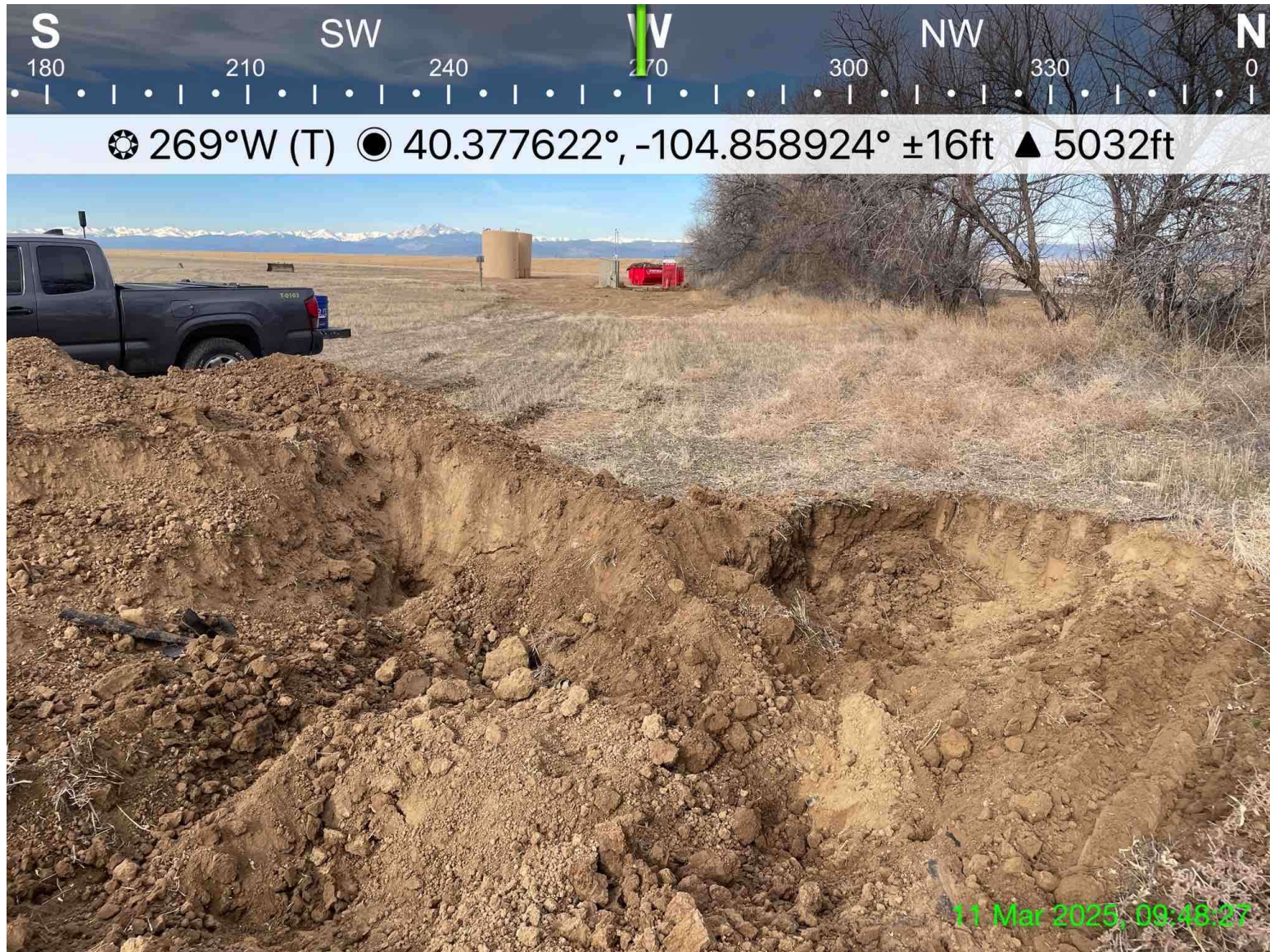


Photo 2: View of sample location FL01-02, facing west

Attachment A - Photographic Log

BLEHM N 26-8 flowline

Chevron REM# 38109

3/11, 3/12, 4/28/2025



Photo 3: View of screening location PH01-FL01, facing east

Attachment A - Photographic Log

BLEHM N 26-8 flowline

Chevron REM# 38109

3/11, 3/12, 4/28/2025



Photo 4: View of sample location FL01-03, facing northwest

Attachment A - Photographic Log

BLEHM N 26-8 flowline

Chevron REM# 38109

3/11, 3/12, 4/28/2025



Photo 5: View of sampling location FL01-04, facing southeast

Attachment A - Photographic Log

BLEHM N 26-8 flowline

Chevron REM# 38109

3/11, 3/12, 4/28/2025



Photo 6: View of sampling location FL01-05, facing west

Attachment A - Photographic Log

BLEHM N 26-8 flowline

Chevron REM# 38109

3/11, 3/12, 4/28/2025



Photo 7: View of sampling location FL01-06, facing south

Attachment A - Photographic Log

BLEHM N 26-8 flowline

Chevron REM# 38109

3/11, 3/12, 4/28/2025



Photo 8: View of screening location PH03-FL01, facing northwest

Attachment A - Photographic Log

BLEHM N 26-8 flowline

Chevron REM# 38109

3/11, 3/12, 4/28/2025



Photo 9: View of screening location PH02-FL01, facing north

Attachment A - Photographic Log

BLEHM N 26-8 flowline

Chevron REM# 38109

3/11, 3/12, 4/28/2025



Photo 10: View of sampling location FL01-07, facing southeast

Attachment A - Photographic Log

BLEHM N 26-8 flowline

Chevron REM# 38109

3/11, 3/12, 4/28/2025



Photo 11: View of screening location PH05-FL01, facing southeast

Attachment A - Photographic Log

BLEHM N 26-8 flowline

Chevron REM# 38109

3/11, 3/12, 4/28/2025

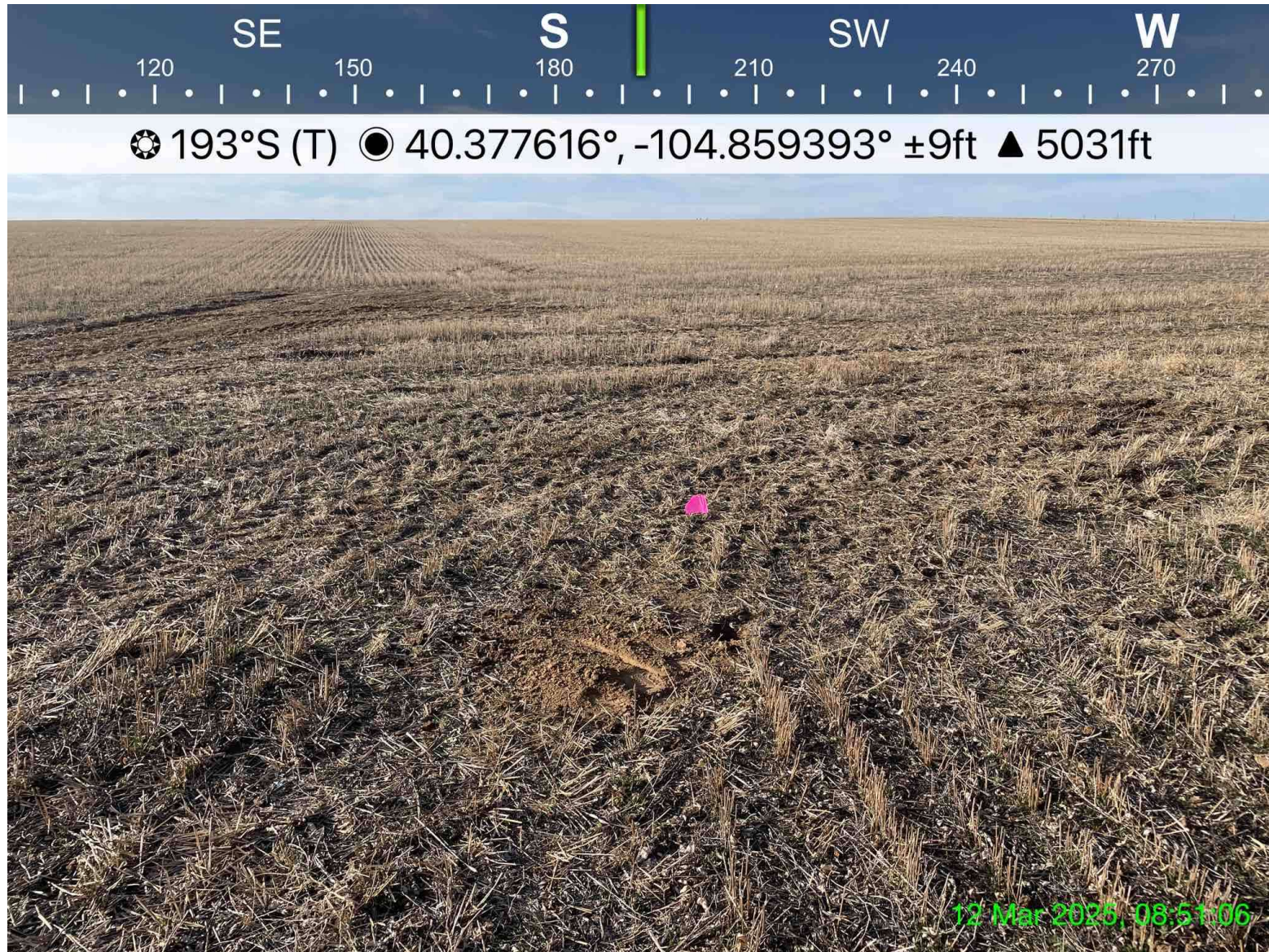


Photo 12: View of background sample location BKG01, facing south

Attachment A - Photographic Log

BLEHM N 26-8 flowline

Chevron REM# 38109

3/11, 3/12, 4/28/2025

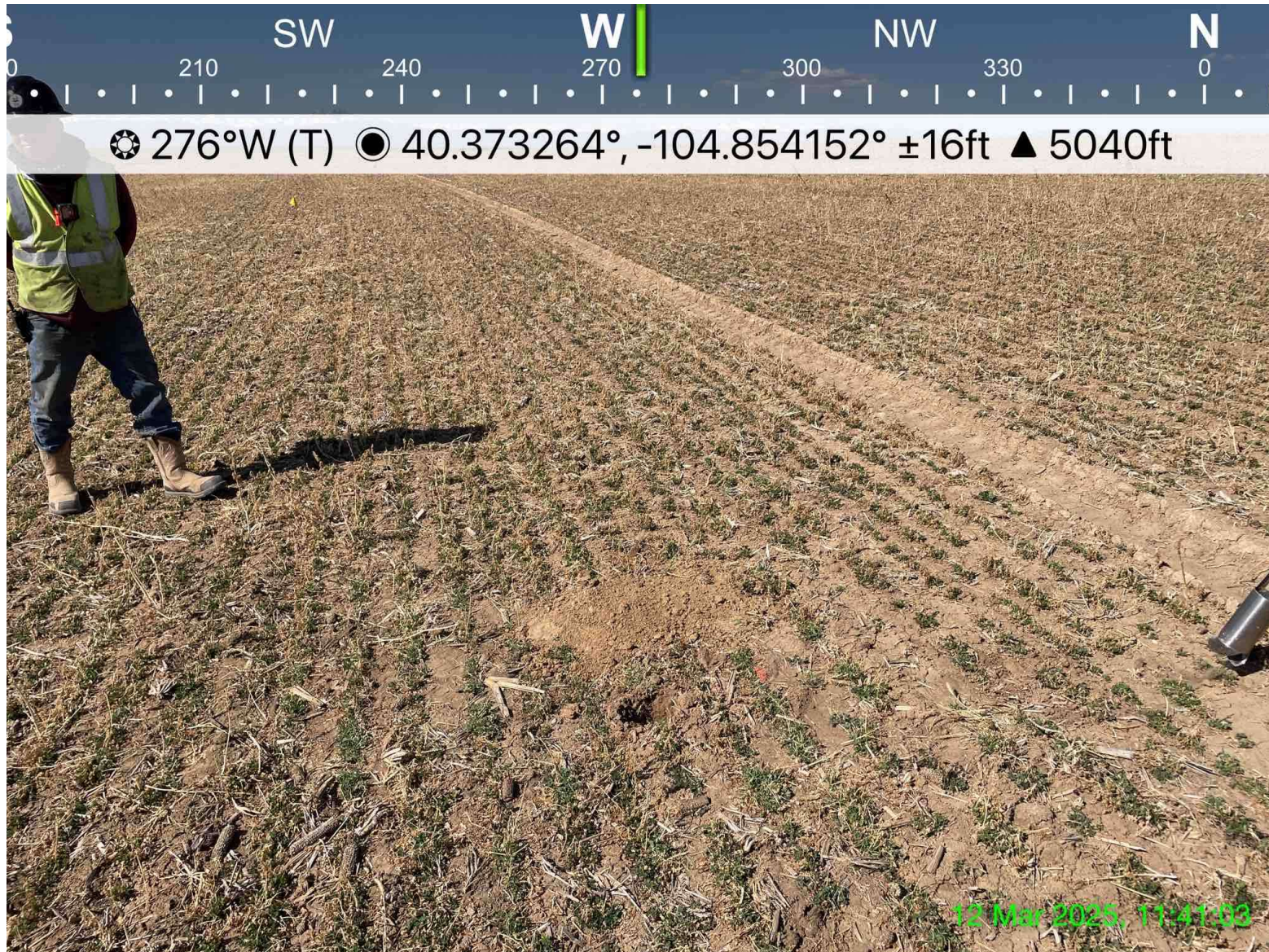


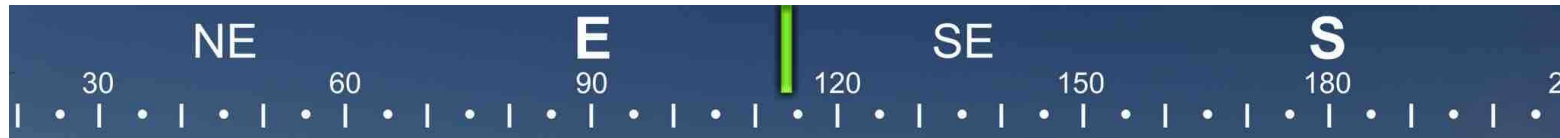
Photo 13: View of background sample location BKG02, facing west

Attachment A - Photographic Log

BLEHM N 26-8 flowline

Chevron REM# 38109

3/11, 3/12, 4/28/2025



☀ 114°SE (T) ● 40.374486°, -104.855575° ±16ft ▲ 5054ft



Photo 14: View of screening location PH07-FL01, facing east

Attachment A - Photographic Log

BLEHM N 26-8 flowline

Chevron REM# 38109

3/11, 3/12, 4/28/2025

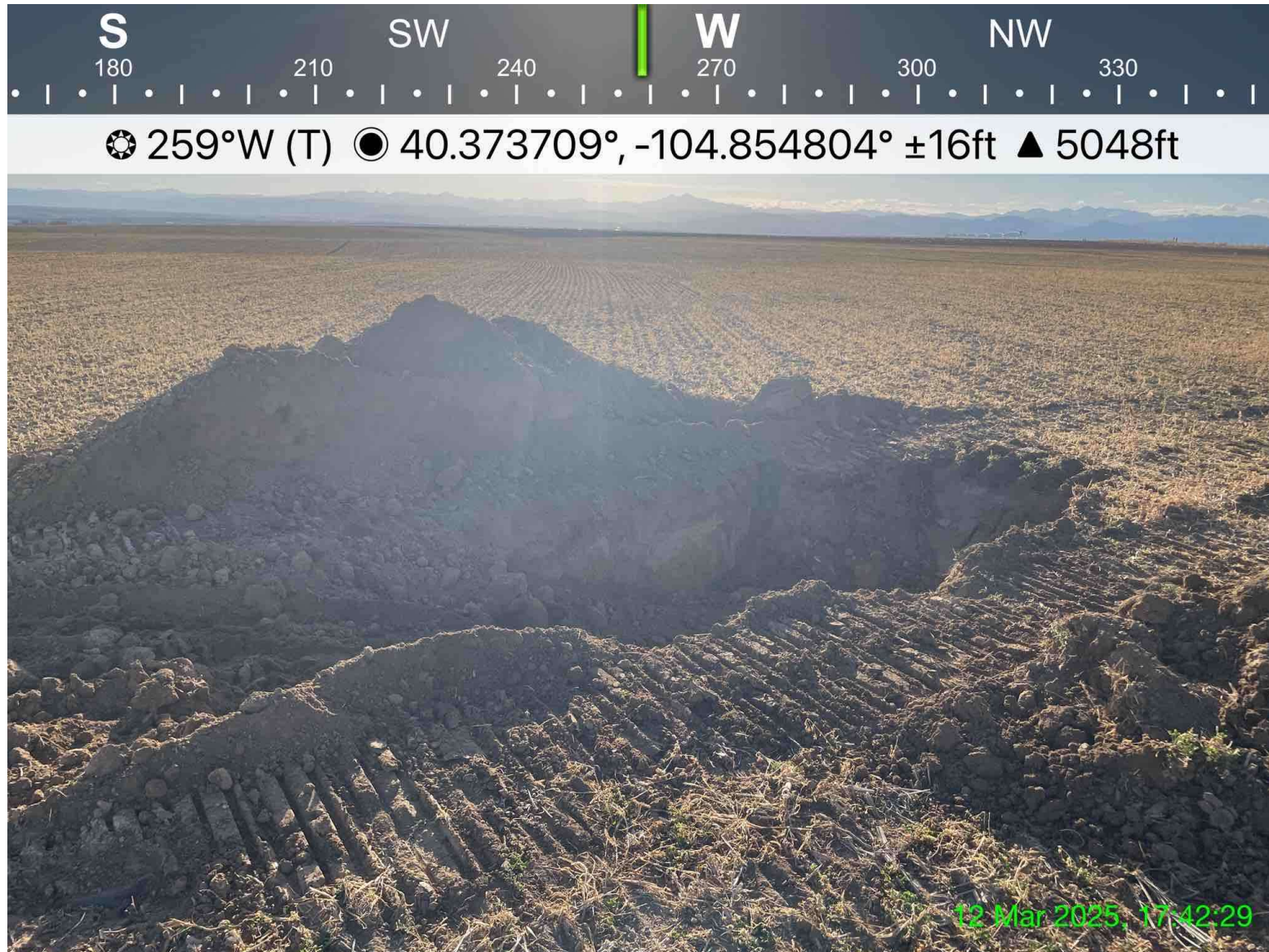


Photo 15: View of screening location PH08-FL01, facing west

Attachment A - Photographic Log

BLEHM N 26-8 flowline

Chevron REM# 38109

3/11, 3/12, 4/28/2025



Photo 16: View of screening location PH09-FL01, facing northwest

Attachment A - Photographic Log

BLEHM N 26-8 flowline

Chevron REM# 38109

3/11, 3/12, 4/28/2025



Photo 17: View of sampling location FL01-R-W, facing northwest

Attachment A - Photographic Log

BLEHM N 26-8 flowline

Chevron REM# 38109

3/11, 3/12, 4/28/2025

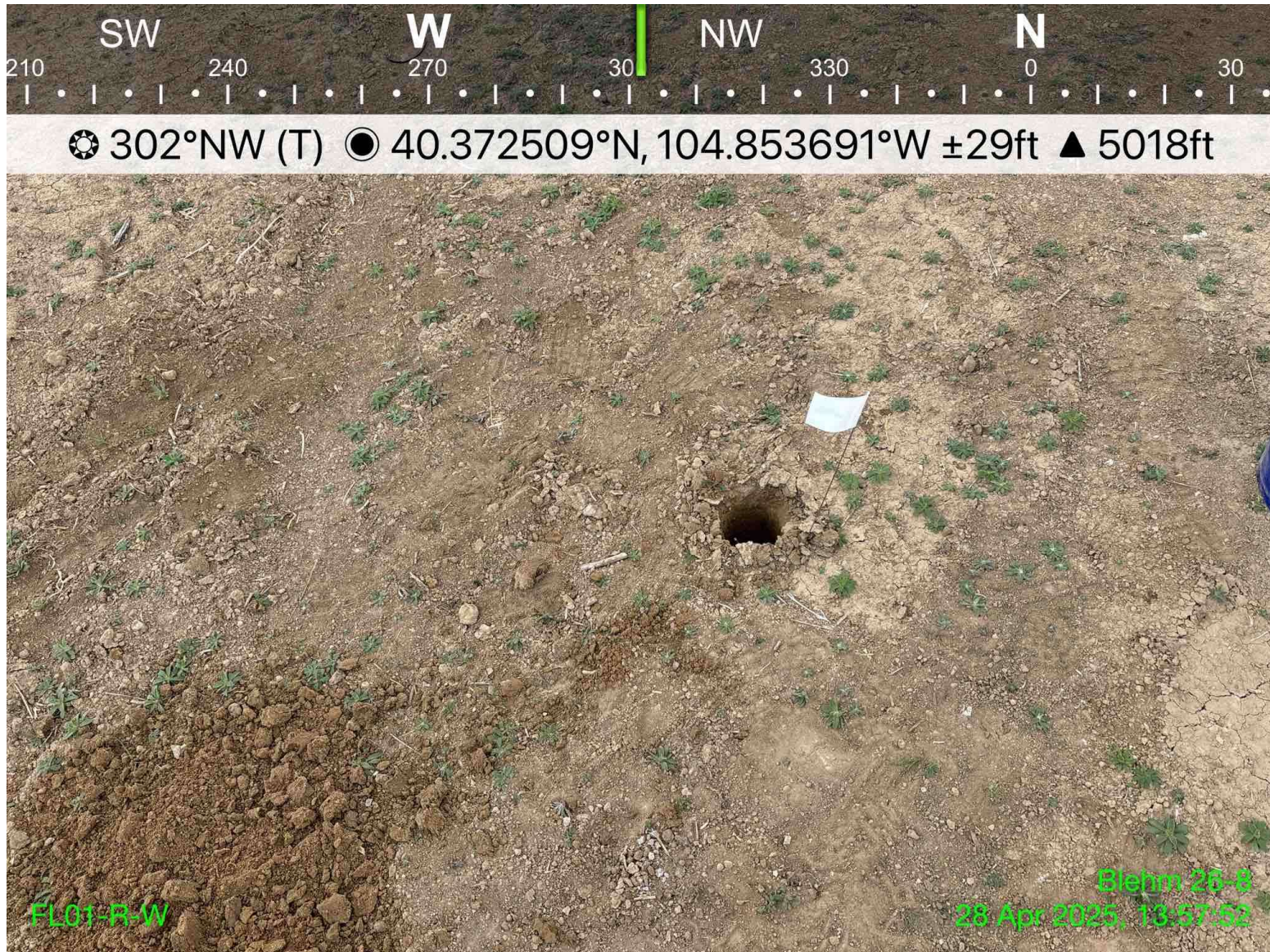


Photo 18: View of re-sampling location FL01-R-W, facing northwest

Attachment A - Photographic Log

BLEHM N 26-8 flowline

Chevron REM# 38109

3/11, 3/12, 4/28/2025

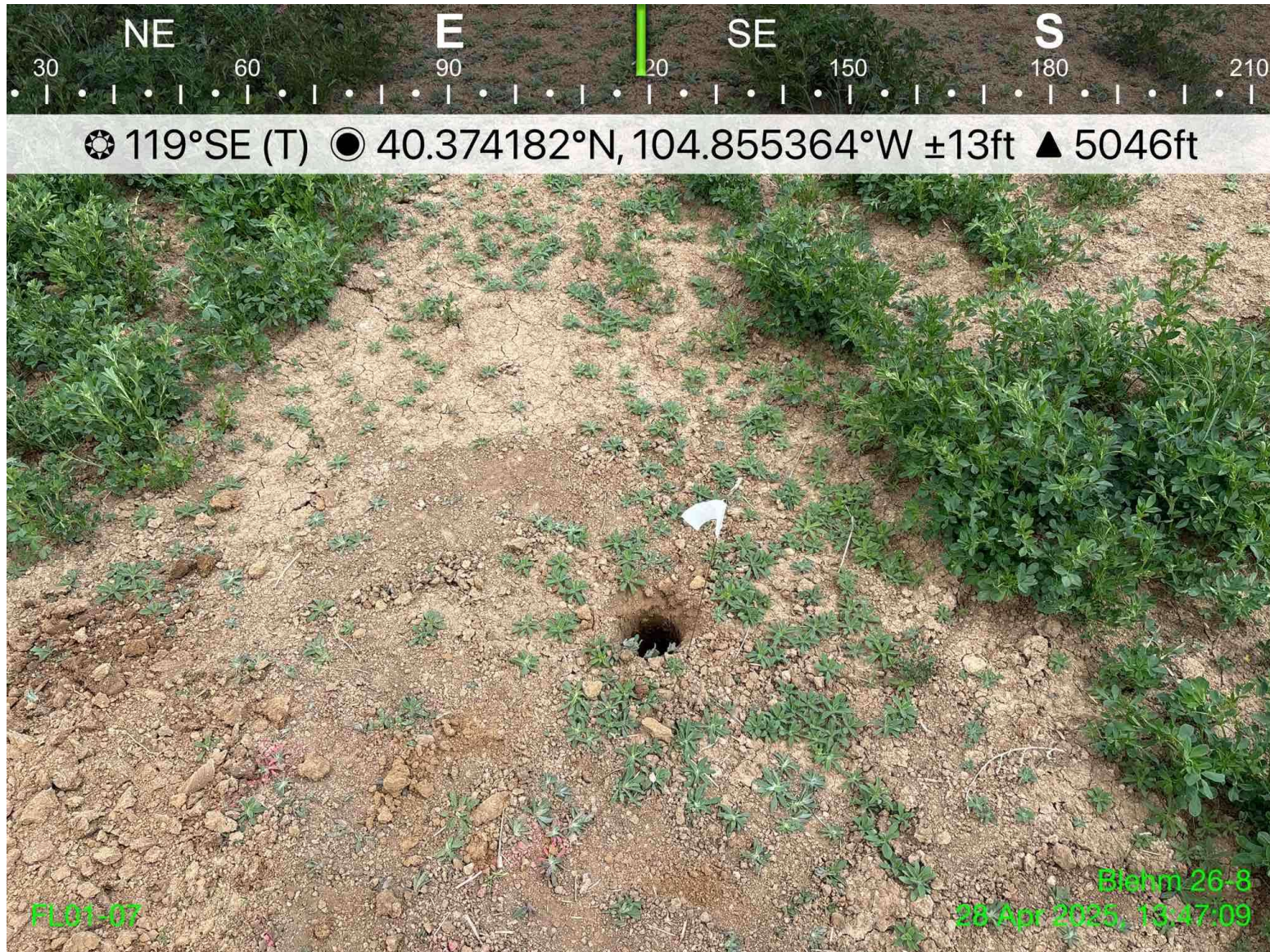


Photo 19: View of re-sampling location FL01-07, facing southeast



CDH Consulting, LLC
Thornton, Colorado
720.431.7468
www.CDHConsult.com

ATTACHMENT B
FLOWLINE CLOSURE CHECKLISTS

