

WELL NAME: ITTY BITTY 12-31, API #: 071-08232, INSP. # 716301054



PHOTO 1: WELL SIGN



COLORADO
Energy & Carbon Management
Commission
Department of Natural Resources



PHOTO 2: LOCATION.





PHOTO 3: WELLHEAD AND EQUIPMENT.



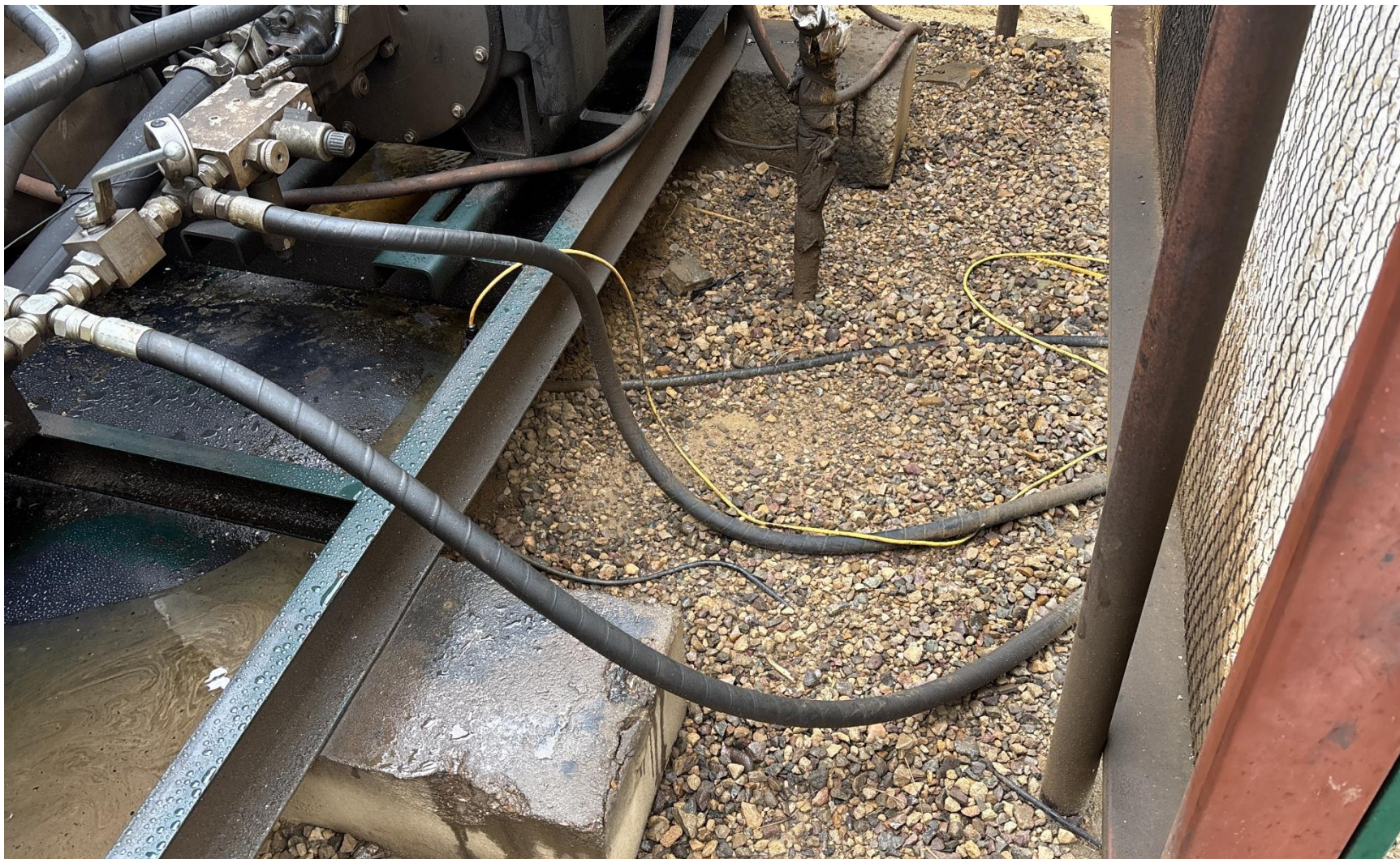


PHOTO 4: AREA OF IMPACTED OILS AROUND PRIME MOVER ENGINE SKID. Conduct maintenance on equipment, cleanup stained material and review self inspection processes. COMPLY WITH RULE 1002,.(2).D. THIS IS THE 3RD NOTIVE FOR THIS CORRECTIVE ACTION IMMEDIATE ACTION IS REQUIRED.



PHOTO 5: OILY WASTE IS PRIME MOVER ENGINE SKID (ALTHOUGH IT APPEARS THAT THE SKID HAS BEEN CLEANED SINCE LAST INSPECTION THE EQUIPMENT MAINTANANCE HAS EITHER NOT BEEN PERFORMED OR REPAIRS ARE INADEQUATE). DRAIN OILY WASTE REPAIR ALL LEAKS AND REMOVE IMPACTED SOIL PER RULE 1002..(2).D & 1002.f.(2)B, Comply with general provisions of the oil and gas act for wildlife protection AND SB-181. (THIS IS THE 3RD INSPECTION OF THIS EQUIPMENT WITH THE SAME COMPLIANCE CONDITIONS LEAKING EQUIPMENT MUST BE REPAIRED OR REPLACED. CA DATE 6/3/2025.

