

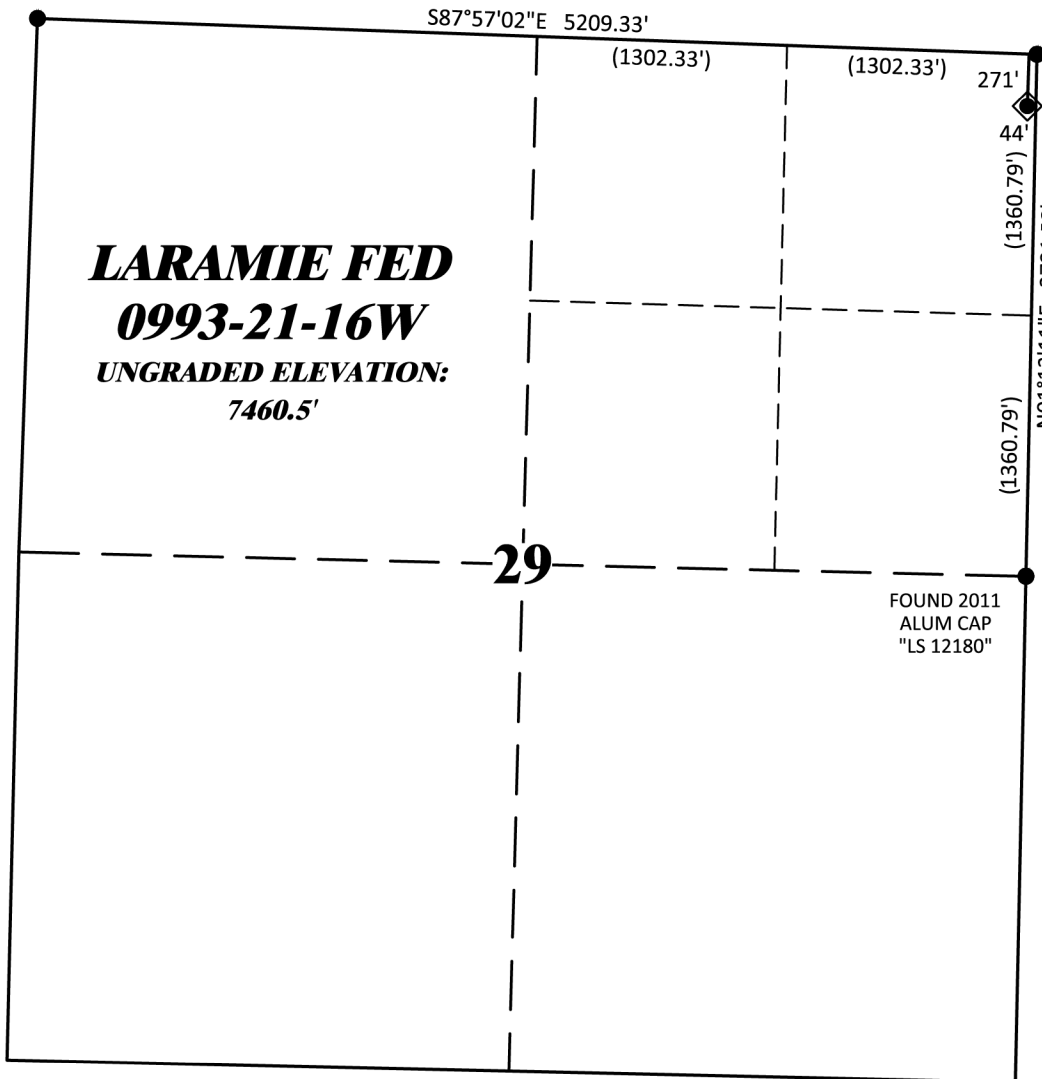
FOUND 2014
ALUM CAP
"PLS 22097"

R. 93 W.

FOUND
0.9'x0.9'
STONE



GRID NORTH
SCALE' 1" = 1000'
500' 0 1000'
T. 9 S.



LARAMIE FED
0993-21-16W
UNGRADED ELEVATION:
7460.5'

29

FOUND 2011
ALUM CAP
"LS 12180"

SHL
LATITUDE (NAD 83)
NORTH 39.254638 DEG.
LONGITUDE (NAD 83)
WEST 107.783962 DEG.
NORTHING (NAD 83)
1525765.40
EASTING (NAD 83)
2353322.76

BASIS OF BEARING/DATUM
SPCS CO CENTRAL ZONE NAD 27 BASED
ON GPS STATIC OBSERVATIONS AND
OPUS SOLUTION ON DRG CONTROL
POINT "CP 16-9-93" HAVING A
POSITION OF:
NAD83(2011)
LAT 39° 16' 16.64" NORTH
LONG 107° 46' 11.24" WEST
NAVD88 ELEVATION: 7245.29

THE NORTH LINE OF SECTION 29,
MONUMENTED AS SHOWN AND
BEARING S87°57'02"E.

NOTES

1. GPS OPERATOR T. SHERRILL OBSERVED A PDOF OF 1.3.
2. ALL GPS OBSERVATIONS ARE IN COMPLIANCE WITH COGCC RULE No.215.
3. EXISTING IMPROVEMENTS WITHIN 2000' OF LOCATION. SEE LOC. DRAWING.
4. SURROUNDING SURFACE USE IS NATIVE BRUSH, NON CROP RANGELAND.

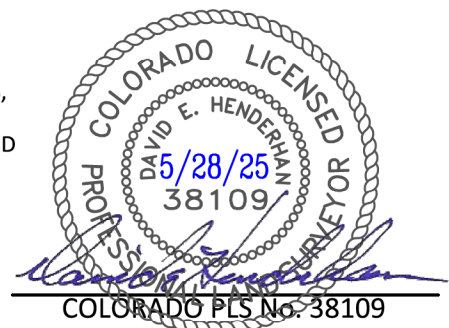
LEGEND

- ◆ WELL LOCATION
- FOUND MONUMENT

SURVEYOR'S STATEMENT

I, DAVID E. HENDERHAN, AN EMPLOYEE AND AGENT ON BEHALF OF D.R. GRIFFIN & ASSOCIATES, INC. STATE THE PLAT HEREON IS A CORRECT REPRESENTATION OF A SURVEY MADE UNDER MY SUPERVISION ON THE 24th DAY OF APRIL, 2023 OF THE SHOWN LARAMIE FED 0993-21-16W AND THAT THE LOCATION HAS BEEN STAKED ON THE GROUND AS SHOWN ON THIS PLAT.

Notice: In accordance with Colorado State Law, any legal action based upon any defect in this survey plat must commence within three (3) years after first discovery of such defect. In no event, may any action based upon any defect in this survey plat be commenced more than ten (10) years from the date of certification shown hereon.



LARAMIE 0993-29-01

COLORADO PLS No. 38109

DRG RIFFIN & ASSOCIATES, INC.
(307) 362-5028 1414 ELK ST., ROCK SPRINGS, WY 82901

**PLAT OF DRILLING LOCATION IN
NENE, SECTION 29, FOR
LARAMIE ENERGY, LLC**

DRAWN: 8/10/2023 - DEH	SCALE: 1" = 1000'
REVISED: 5/22/2025 - DEH	DRG JOB No. 22334
MISC. REVISIONS	A7-21-16W

**271' F/NL, & 44' F/EL, SECTION 29,
T. 9 S., R. 93 W., 6TH P.M.,
MESA COUNTY, COLORADO**

