

Project: Mesa County, CO
 Site: Laramie 0993-29-01
 Well: Laramie 29-01 Fed 0993-21-16W
 Wellbore: OH
 Design: Design #2
 Latitude: 39.254638
 Longitude: -107.783962
 Ground Level: 7463.0
 RKB=30' @ 7493.0usft (TBD)

PROJECT DETAILS: Mesa County, CO
 Geodetic System: US State Plane 1983
 Datum: North American Datum 1983
 Ellipsoid: GRS 1980
 Zone: Colorado Central Zone
 System Datum: Mean Sea Level

REFERENCE INFORMATION
 Vertical (TVD) Reference: RKB=30' @ 7493.0usft (TBD)
 Section (VS) Reference: Slot - A7(0.0N, 0.0E)
 Measured Depth Reference: RKB=30' @ 7493.0usft (TBD)
 Calculation Method: Minimum Curvature

FORMATION TOP DETAILS

TVDPATH	MDPATH	FORMATION
2740.0	2917.7	Wasatch 'G' Sand
3222.0	3447.6	Fort Union
3902.0	4195.2	Lower Wasatch
4685.0	5056.1	Ohio Creek
5093.0	5504.6	Williams Fork
6116.0	6564.4	TOG
7315.0	7763.4	Cameo
7641.0	8089.4	Rollins

SECTION DETAILS

MD	Inc	Azi	TVD	+N/-S	+E/-W	Dleg	TFace	Vsect	Annotation
0.0	0.00	0.00	0.0	0.0	0.0	0.00	0.00	0.0	
300.0	0.00	0.00	300.0	0.0	0.0	0.00	0.00	0.0	KOP (Build 2.5° / 100)
1282.1	24.55	62.82	1252.4	94.7	194.4	2.50	62.82	207.2	EOB @ 24.55° Inc. / 62.82° Azm
5582.3	24.55	62.82	5163.6	910.8	1774.0	0.00	0.00	1994.1	Drop 2.5° / 100'
6564.4	0.00	0.00	6116.0	1005.4	1958.4	2.50	180.00	2201.4	EOD @ Vertical
8339.4	0.00	0.00	7891.0	1005.4	1958.4	0.00	0.00	2201.4	TD @ 8339.4' MD / 7891.0' TVD

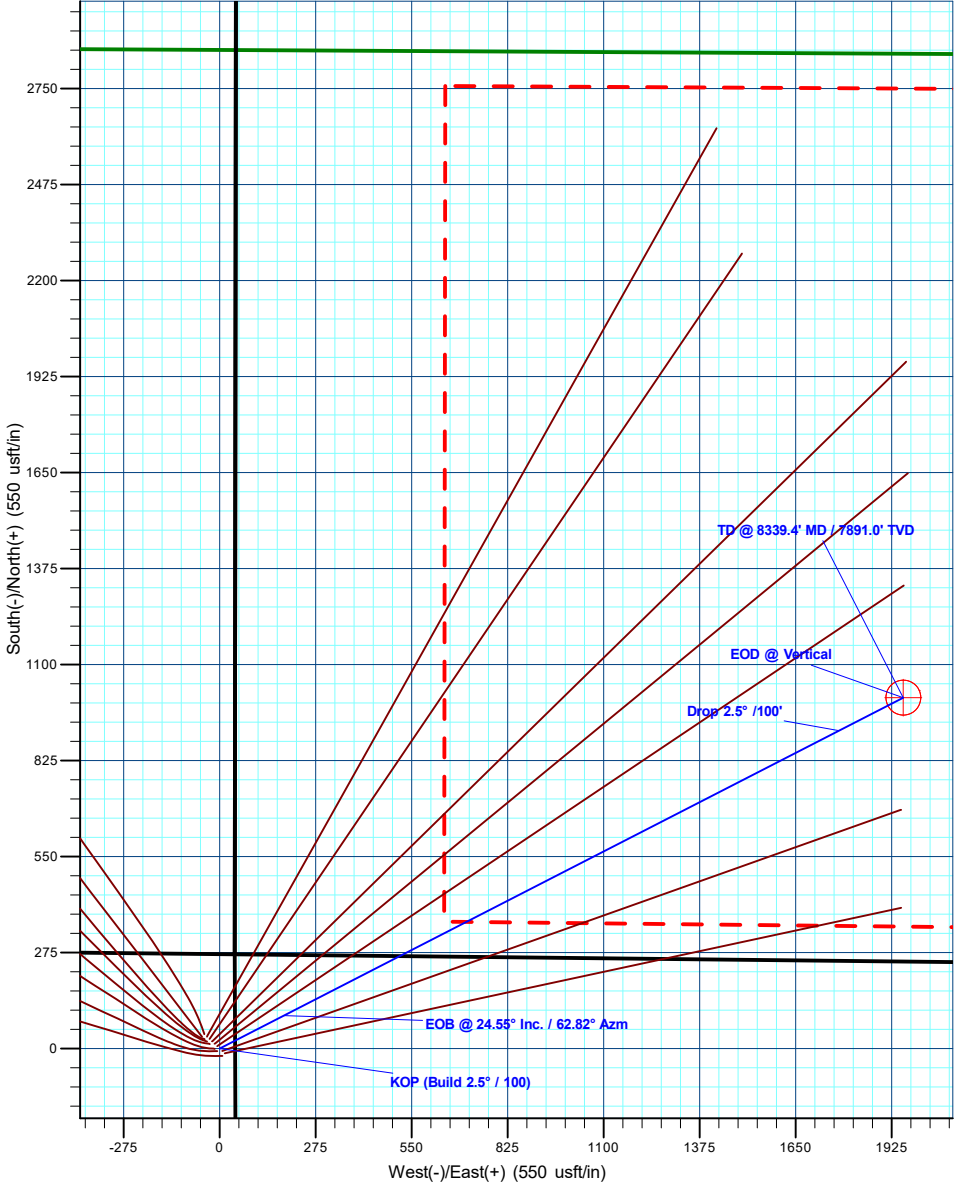
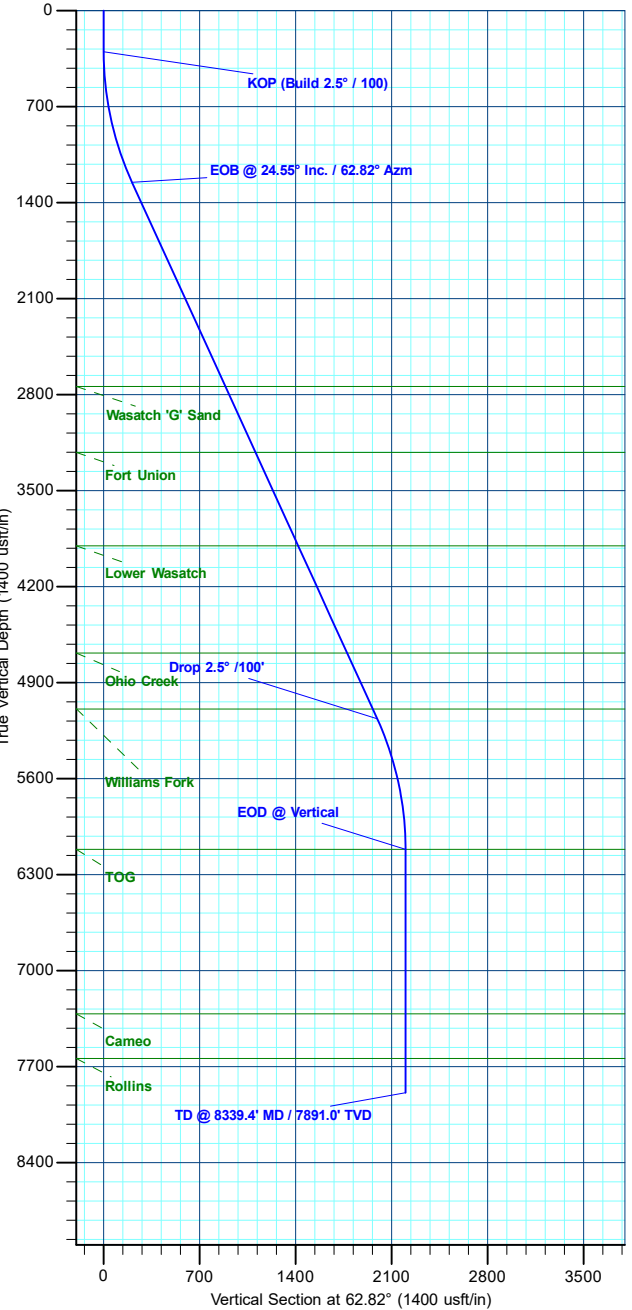
Azimuths to True North
 Magnetic North: 8.67°
 Magnetic Field Strength: 50830.0nT
 Dip Angle: 65.10°
 Date: 8/7/2023
 Model: HDGM2025

DESIGN TARGET DETAILS

Name	TVD	+N/-S	+E/-W	Northing	Easting	Latitude	Longitude
PBHL - Laramie Fed 21-16W	7891.0	1005.4	1958.4	1526721.30	2355305.78	39.257398	-107.777046

WELL DETAILS: Laramie 29-01 Fed 0993-21-16W

+N/-S	+E/-W	Ground Level : 7463.0	Northing	Easting	Latitude	Longitude	A7
0.0	0.0		1525765.40	2353322.76	39.254638	-107.783962	



Plan: Design #2 (Laramie 29-01 Fed 0993-21-16W/OH)
 Created By: Will Jircik Date: 11:12, May 08 2025